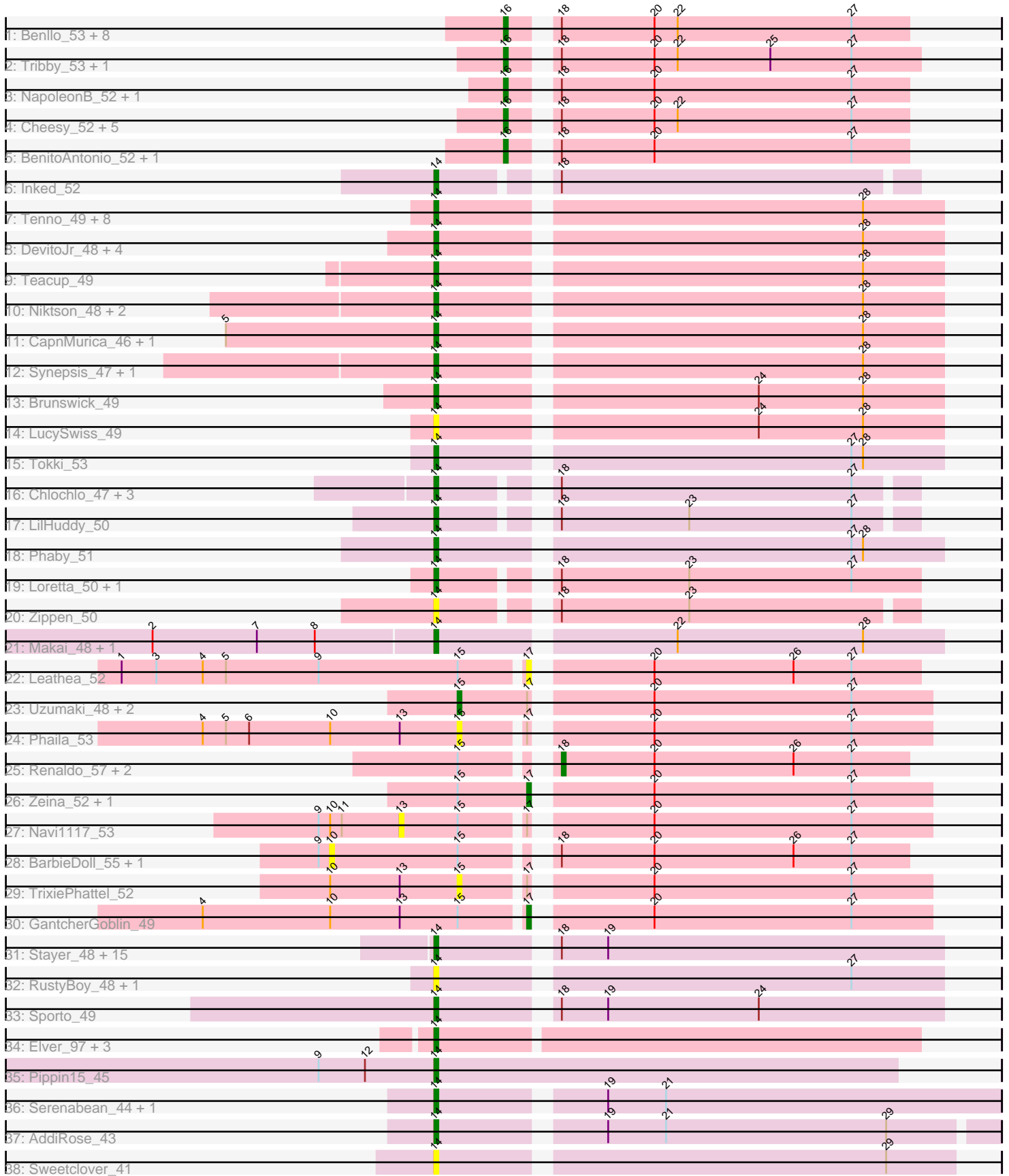


Pham 216033



Note: Tracks are now grouped by subcluster and scaled. Switching in subcluster is indicated by changes in track color. Track scale is now set by default to display the region 30 bp upstream of start 1 to 30 bp downstream of the last possible start. If this default region is judged to be packed too tightly with annotated starts, the track will be further scaled to only show that region of the ORF with annotated starts. This action will be indicated by adding "Zoomed" to the title. For starts, yellow indicates the location of called starts comprised solely of Glimmer/GeneMark auto-annotations, green indicates the location of called starts with at least 1 manual gene annotation.

Pham 216033 Report

This analysis was run 02/22/25 on database version 588.

Pham number 216033 has 101 members, 28 are drafts.

Phages represented in each track:

- Track 1 : Benllo_53, JEGGS_51, GoCrazy_51, Hankly_51, Heisenberger_51, Mudcat_49, KeaneyLin_51, Circum_54, Mooshroom_54
- Track 2 : Tribby_53, Xenomorph_49
- Track 3 : NapoleonB_52, Dynamite_52
- Track 4 : Cheesy_52, Elsa_52, Arcadia_52, Correa_50, Bowling_51, Nason_52
- Track 5 : BenitoAntonio_52, Kardesai_53
- Track 6 : Inked_52
- Track 7 : Tenno_49, Trustiboi_48, Acai_49, Gordon_46, Caterpillar_45, Issa_49, Darby_47, Breylor17_48, CastorTray_51
- Track 8 : DevitoJr_48, Nivinsha_50, Tatanka_46, ScienceWizSam_49, AreFloNak_51
- Track 9 : Teacup_49
- Track 10 : Niktson_48, ElephantMan_48, Nightmare_50
- Track 11 : CapnMurica_46, MiniBagel_48
- Track 12 : Synopsis_47, MediumFry_46
- Track 13 : Brunswick_49
- Track 14 : LucySwiss_49
- Track 15 : Tokki_53
- Track 16 : Chlochlo_47, Bouchard_48, Shepard_51, Giantsbane_49
- Track 17 : LilHuddy_50
- Track 18 : Phaby_51
- Track 19 : Loretta_50, Ingrid_50
- Track 20 : Zippen_50
- Track 21 : Makai_48, Truckee_46
- Track 22 : Leathea_52
- Track 23 : Uzumaki_48, KevinMinion_51, Tenney120_53
- Track 24 : Phaila_53
- Track 25 : Renaldo_57, Kinny_55, Lewando_54
- Track 26 : Zeina_52, Argan_49
- Track 27 : Navi1117_53
- Track 28 : BarbieDoll_55, Biscute_54
- Track 29 : TrixiePhattel_52
- Track 30 : GantcherGoblin_49
- Track 31 : Stayer_48, ProfFrink_48, Sloopyjoe_48, Linda_48, Michelle_48, Djungelskog_48, Egad_48, Boog_49, BronxBay_48, Raunak_51, Salk_48, StarLord_48, HerbBucket_49, Shiba_47, MrAaronian_48, DoctorPepper_47
- Track 32 : RustyBoy_48, Natasha_48

- Track 33 : Sporto_49
- Track 34 : Elver_97, Gandionco_95, Paella_99, Qui_99
- Track 35 : Pippin15_45
- Track 36 : Serenabean_44, Daddyjeff_44
- Track 37 : AddiRose_43
- Track 38 : Sweetclover_41

Summary of Final Annotations (See graph section above for start numbers):

The start number called the most often in the published annotations is 14, it was called in 49 of the 73 non-draft genes in the pham.

Genes that call this "Most Annotated" start:

- Acai_49, AddiRose_43, AreFloNak_51, Boog_49, Bouchard_48, Breylor17_48, BronxBay_48, Brunswick_49, CapnMurica_46, CastorTray_51, Caterpillar_45, Chlochlo_47, Daddyjeff_44, Darby_47, DevitoJr_48, Djungelskog_48, DoctorPepper_47, Egad_48, ElephantMan_48, Elver_97, Gandionco_95, Giantsbane_49, Gordon_46, HerbBucket_49, Ingrid_50, Inked_52, Issa_49, LilHuddy_50, Linda_48, Loretta_50, LucySwiss_49, Makai_48, MediumFry_46, Michelle_48, MiniBagel_48, MrAaronian_48, Natasha_48, Nightmare_50, Niktson_48, Nivinsha_50, Paella_99, Phaby_51, Pippin15_45, ProfFrink_48, Qui_99, Raunak_51, RustyBoy_48, Salk_48, ScienceWizSam_49, Serenabean_44, Shepard_51, Shiba_47, Sloopyjoe_48, Sporto_49, StarLord_48, Stayer_48, Sweetclover_41, Synopsis_47, Tatanka_46, Teacup_49, Tenno_49, Tokki_53, Truckee_46, Trustiboi_48, Zippen_50,

Genes that have the "Most Annotated" start but do not call it:

-

Genes that do not have the "Most Annotated" start:

- Arcadia_52, Argan_49, BarbieDoll_55, BenitoAntonio_52, Benllo_53, Biscute_54, Bowling_51, Cheesy_52, Circum_54, Correa_50, Dynamite_52, Elsa_52, GantcherGoblin_49, GoCrazy_51, Hankly_51, Heisenberger_51, JEGGS_51, Kardesai_53, KeaneyLin_51, KevinMinion_51, Kinny_55, Leathea_52, Lewando_54, Mooshroom_54, Mudcat_49, NapoleonB_52, Nason_52, Navi1117_53, Phaila_53, Renaldo_57, Tenney120_53, Tribby_53, TrixiePhattel_52, Uzumaki_48, Xenomorph_49, Zeina_52,

Summary by start number:

Start 10:

- Found in 6 of 101 (5.9%) of genes in pham
- No Manual Annotations of this start.
- Called 33.3% of time when present
- Phage (with cluster) where this start called: BarbieDoll_55 (AU6), Biscute_54 (AU6),

Start 13:

- Found in 4 of 101 (4.0%) of genes in pham
- No Manual Annotations of this start.
- Called 25.0% of time when present

- Phage (with cluster) where this start called: Navi1117_53 (AU6),

Start 14:

- Found in 65 of 101 (64.4%) of genes in pham
- Manual Annotations of this start: 49 of 73
- Called 100.0% of time when present
- Phage (with cluster) where this start called: Acai_49 (AU1), AddiRose_43 (JA), AreFloNak_51 (AU1), Boog_49 (AW), Bouchard_48 (AU2), Breylor17_48 (AU1), BronxBay_48 (AW), Brunswick_49 (AU1), CapnMurica_46 (AU1), CastorTray_51 (AU1), Caterpillar_45 (AU4), Chlochlo_47 (AU2), Daddyjeff_44 (JA), Darby_47 (AU1), DevitoJr_48 (AU1), Djungelskog_48 (AW), DoctorPepper_47 (AW), Egad_48 (AW), ElephantMan_48 (AU1), Elver_97 (FK), Gandionco_95 (FK), Giantsbane_49 (AU2), Gordon_46 (AU1), HerbBucket_49 (AW), Ingrid_50 (AU3), Inked_52 (AU), Issa_49 (AU1), LilHuddy_50 (AU2), Linda_48 (AW), Loretta_50 (AU3), LucySwiss_49 (AU1), Makai_48 (AU5), MediumFry_46 (AU4), Michelle_48 (AW), MiniBagel_48 (AU1), MrAaronian_48 (AW), Natasha_48 (AW), Nightmare_50 (AU1), Niktson_48 (AU1), Nivinsha_50 (AU1), Paella_99 (FK), Phaby_51 (AU2), Pippin15_45 (JA), ProfFrink_48 (AW), Qui_99 (FK), Raunak_51 (AW), RustyBoy_48 (AW), Salk_48 (AW), ScienceWizSam_49 (AU1), Serenabean_44 (JA), Shepard_51 (AU2), Shiba_47 (AW), Sloopyjoe_48 (AW), Sporto_49 (AW), StarLord_48 (AW), Stayer_48 (AW), Sweetclover_41 (JA), Synepsis_47 (AU1), Tatanka_46 (AU1), Teacup_49 (AU1), Tenno_49 (AU1), Tokki_53 (AU2), Truckee_46 (AU5), Trustiboi_48 (AU1), Zippen_50 (AU3),

Start 15:

- Found in 15 of 101 (14.9%) of genes in pham
- Manual Annotations of this start: 1 of 73
- Called 33.3% of time when present
- Phage (with cluster) where this start called: KevinMinion_51 (AU6), Phaila_53 (AU6), Tenney120_53 (AU6), TrixiePhattel_52 (AU6), Uzumaki_48 (AU6),

Start 16:

- Found in 21 of 101 (20.8%) of genes in pham
- Manual Annotations of this start: 19 of 73
- Called 100.0% of time when present
- Phage (with cluster) where this start called: Arcadia_52 (AM), BenitoAntonio_52 (AM), Benllo_53 (AM), Bowling_51 (AM), Cheesy_52 (AM), Circum_54 (AM), Correa_50 (AM), Dynamite_52 (AM), Elsa_52 (AM), GoCrazy_51 (AM), Hankly_51 (AM), Heisenberger_51 (AM), JEGGS_51 (AM), Kardesai_53 (AM), KeaneyLin_51 (AM), Mooshroom_54 (AM), Mudcat_49 (AM), NapoleonB_52 (AM), Nason_52 (AM), Tribby_53 (AM), Xenomorph_49 (AM),

Start 17:

- Found in 10 of 101 (9.9%) of genes in pham
- Manual Annotations of this start: 3 of 73
- Called 40.0% of time when present
- Phage (with cluster) where this start called: Argan_49 (AU6), GantcherGoblin_49 (AU6), Leathea_52 (AU6), Zeina_52 (AU6),

Start 18:

- Found in 52 of 101 (51.5%) of genes in pham
- Manual Annotations of this start: 1 of 73
- Called 5.8% of time when present

- Phage (with cluster) where this start called: Kinny_55 (AU6), Lewando_54 (AU6), Renaldo_57 (AU6),

Summary by clusters:

There are 11 clusters represented in this pham: AM, AU1, AU3, AU2, AU5, AU4, AW, AU6, AU, FK, JA,

Info for manual annotations of cluster AM:

- Start number 16 was manually annotated 19 times for cluster AM.

Info for manual annotations of cluster AU:

- Start number 14 was manually annotated 1 time for cluster AU.

Info for manual annotations of cluster AU1:

- Start number 14 was manually annotated 17 times for cluster AU1.

Info for manual annotations of cluster AU2:

- Start number 14 was manually annotated 5 times for cluster AU2.

Info for manual annotations of cluster AU3:

- Start number 14 was manually annotated 2 times for cluster AU3.

Info for manual annotations of cluster AU4:

- Start number 14 was manually annotated 2 times for cluster AU4.

Info for manual annotations of cluster AU5:

- Start number 14 was manually annotated 2 times for cluster AU5.

Info for manual annotations of cluster AU6:

- Start number 15 was manually annotated 1 time for cluster AU6.
- Start number 17 was manually annotated 3 times for cluster AU6.
- Start number 18 was manually annotated 1 time for cluster AU6.

Info for manual annotations of cluster AW:

- Start number 14 was manually annotated 14 times for cluster AW.

Info for manual annotations of cluster FK:

- Start number 14 was manually annotated 2 times for cluster FK.

Info for manual annotations of cluster JA:

- Start number 14 was manually annotated 4 times for cluster JA.

Gene Information:

Gene: Acai_49 Start: 34862, Stop: 34987, Start Num: 14

Candidate Starts for Acai_49:

(Start: 14 @34862 has 49 MA's), (28, 34967),

Gene: AddiRose_43 Start: 31154, Stop: 31291, Start Num: 14

Candidate Starts for AddiRose_43:

(Start: 14 @31154 has 49 MA's), (19, 31193), (21, 31208), (29, 31265),

Gene: Arcadia_52 Start: 33235, Stop: 33333, Start Num: 16

Candidate Starts for Arcadia_52:

(Start: 16 @33235 has 19 MA's), (Start: 18 @33244 has 1 MA's), (20, 33268), (22, 33274), (27, 33319),

Gene: AreFloNak_51 Start: 34832, Stop: 34957, Start Num: 14

Candidate Starts for AreFloNak_51:

(Start: 14 @34832 has 49 MA's), (28, 34937),

Gene: Argan_49 Start: 33254, Stop: 33352, Start Num: 17

Candidate Starts for Argan_49:

(Start: 15 @33236 has 1 MA's), (Start: 17 @33254 has 3 MA's), (20, 33281), (27, 33332),

Gene: BarbieDoll_55 Start: 34950, Stop: 35090, Start Num: 10

Candidate Starts for BarbieDoll_55:

(9, 34947), (10, 34950), (Start: 15 @34983 has 1 MA's), (Start: 18 @35001 has 1 MA's), (20, 35025), (26, 35061), (27, 35076),

Gene: BenitoAntonio_52 Start: 32772, Stop: 32870, Start Num: 16

Candidate Starts for BenitoAntonio_52:

(Start: 16 @32772 has 19 MA's), (Start: 18 @32781 has 1 MA's), (20, 32805), (27, 32856),

Gene: Benllo_53 Start: 33450, Stop: 33548, Start Num: 16

Candidate Starts for Benllo_53:

(Start: 16 @33450 has 19 MA's), (Start: 18 @33459 has 1 MA's), (20, 33483), (22, 33489), (27, 33534),

Gene: Biscute_54 Start: 34602, Stop: 34742, Start Num: 10

Candidate Starts for Biscute_54:

(9, 34599), (10, 34602), (Start: 15 @34635 has 1 MA's), (Start: 18 @34653 has 1 MA's), (20, 34677), (26, 34713), (27, 34728),

Gene: Boog_49 Start: 32283, Stop: 32408, Start Num: 14

Candidate Starts for Boog_49:

(Start: 14 @32283 has 49 MA's), (Start: 18 @32310 has 1 MA's), (19, 32322),

Gene: Bouchard_48 Start: 34781, Stop: 34894, Start Num: 14

Candidate Starts for Bouchard_48:

(Start: 14 @34781 has 49 MA's), (Start: 18 @34805 has 1 MA's), (27, 34880),

Gene: Bowling_51 Start: 32980, Stop: 33078, Start Num: 16

Candidate Starts for Bowling_51:

(Start: 16 @32980 has 19 MA's), (Start: 18 @32989 has 1 MA's), (20, 33013), (22, 33019), (27, 33064),

Gene: Breylor17_48 Start: 35423, Stop: 35548, Start Num: 14

Candidate Starts for Breylor17_48:

(Start: 14 @35423 has 49 MA's), (28, 35528),

Gene: BronxBay_48 Start: 32581, Stop: 32706, Start Num: 14

Candidate Starts for BronxBay_48:

(Start: 14 @32581 has 49 MA's), (Start: 18 @32608 has 1 MA's), (19, 32620),

Gene: Brunswick_49 Start: 34716, Stop: 34841, Start Num: 14

Candidate Starts for Brunswick_49:
(Start: 14 @34716 has 49 MA's), (24, 34794), (28, 34821),

Gene: CapnMurica_46 Start: 35616, Stop: 35741, Start Num: 14
Candidate Starts for CapnMurica_46:
(5, 35562), (Start: 14 @35616 has 49 MA's), (28, 35721),

Gene: CastorTray_51 Start: 35487, Stop: 35612, Start Num: 14
Candidate Starts for CastorTray_51:
(Start: 14 @35487 has 49 MA's), (28, 35592),

Gene: Caterpillar_45 Start: 33882, Stop: 34007, Start Num: 14
Candidate Starts for Caterpillar_45:
(Start: 14 @33882 has 49 MA's), (28, 33987),

Gene: Cheesy_52 Start: 32956, Stop: 33054, Start Num: 16
Candidate Starts for Cheesy_52:
(Start: 16 @32956 has 19 MA's), (Start: 18 @32965 has 1 MA's), (20, 32989), (22, 32995), (27, 33040),

Gene: Chlochlo_47 Start: 34525, Stop: 34638, Start Num: 14
Candidate Starts for Chlochlo_47:
(Start: 14 @34525 has 49 MA's), (Start: 18 @34549 has 1 MA's), (27, 34624),

Gene: Circum_54 Start: 33641, Stop: 33739, Start Num: 16
Candidate Starts for Circum_54:
(Start: 16 @33641 has 19 MA's), (Start: 18 @33650 has 1 MA's), (20, 33674), (22, 33680), (27, 33725),

Gene: Correa_50 Start: 32102, Stop: 32200, Start Num: 16
Candidate Starts for Correa_50:
(Start: 16 @32102 has 19 MA's), (Start: 18 @32111 has 1 MA's), (20, 32135), (22, 32141), (27, 32186),

Gene: Daddyjeff_44 Start: 31430, Stop: 31570, Start Num: 14
Candidate Starts for Daddyjeff_44:
(Start: 14 @31430 has 49 MA's), (19, 31469), (21, 31484),

Gene: Darby_47 Start: 34661, Stop: 34786, Start Num: 14
Candidate Starts for Darby_47:
(Start: 14 @34661 has 49 MA's), (28, 34766),

Gene: DevitoJr_48 Start: 35053, Stop: 35178, Start Num: 14
Candidate Starts for DevitoJr_48:
(Start: 14 @35053 has 49 MA's), (28, 35158),

Gene: Djungelskog_48 Start: 32580, Stop: 32705, Start Num: 14
Candidate Starts for Djungelskog_48:
(Start: 14 @32580 has 49 MA's), (Start: 18 @32607 has 1 MA's), (19, 32619),

Gene: DoctorPepper_47 Start: 32285, Stop: 32410, Start Num: 14
Candidate Starts for DoctorPepper_47:
(Start: 14 @32285 has 49 MA's), (Start: 18 @32312 has 1 MA's), (19, 32324),

Gene: Dynamite_52 Start: 33165, Stop: 33263, Start Num: 16
Candidate Starts for Dynamite_52:

(Start: 16 @33165 has 19 MA's), (Start: 18 @33174 has 1 MA's), (20, 33198), (27, 33249),

Gene: Egad_48 Start: 32582, Stop: 32707, Start Num: 14

Candidate Starts for Egad_48:

(Start: 14 @32582 has 49 MA's), (Start: 18 @32609 has 1 MA's), (19, 32621),

Gene: ElephantMan_48 Start: 35339, Stop: 35464, Start Num: 14

Candidate Starts for ElephantMan_48:

(Start: 14 @35339 has 49 MA's), (28, 35444),

Gene: Elsa_52 Start: 33235, Stop: 33333, Start Num: 16

Candidate Starts for Elsa_52:

(Start: 16 @33235 has 19 MA's), (Start: 18 @33244 has 1 MA's), (20, 33268), (22, 33274), (27, 33319),

Gene: Elver_97 Start: 54542, Stop: 54664, Start Num: 14

Candidate Starts for Elver_97:

(Start: 14 @54542 has 49 MA's),

Gene: Gandionco_95 Start: 53398, Stop: 53520, Start Num: 14

Candidate Starts for Gandionco_95:

(Start: 14 @53398 has 49 MA's),

Gene: GantcherGoblin_49 Start: 33332, Stop: 33430, Start Num: 17

Candidate Starts for GantcherGoblin_49:

(4, 33251), (10, 33284), (13, 33302), (Start: 15 @33317 has 1 MA's), (Start: 17 @33332 has 3 MA's), (20, 33359), (27, 33410),

Gene: Giantsbane_49 Start: 33708, Stop: 33821, Start Num: 14

Candidate Starts for Giantsbane_49:

(Start: 14 @33708 has 49 MA's), (Start: 18 @33732 has 1 MA's), (27, 33807),

Gene: GoCrazy_51 Start: 33106, Stop: 33204, Start Num: 16

Candidate Starts for GoCrazy_51:

(Start: 16 @33106 has 19 MA's), (Start: 18 @33115 has 1 MA's), (20, 33139), (22, 33145), (27, 33190),

Gene: Gordon_46 Start: 35478, Stop: 35603, Start Num: 14

Candidate Starts for Gordon_46:

(Start: 14 @35478 has 49 MA's), (28, 35583),

Gene: Hankly_51 Start: 32380, Stop: 32478, Start Num: 16

Candidate Starts for Hankly_51:

(Start: 16 @32380 has 19 MA's), (Start: 18 @32389 has 1 MA's), (20, 32413), (22, 32419), (27, 32464),

Gene: Heisenberger_51 Start: 32661, Stop: 32759, Start Num: 16

Candidate Starts for Heisenberger_51:

(Start: 16 @32661 has 19 MA's), (Start: 18 @32670 has 1 MA's), (20, 32694), (22, 32700), (27, 32745),

Gene: HerbBucket_49 Start: 32280, Stop: 32405, Start Num: 14

Candidate Starts for HerbBucket_49:

(Start: 14 @32280 has 49 MA's), (Start: 18 @32307 has 1 MA's), (19, 32319),

Gene: Ingrid_50 Start: 34682, Stop: 34798, Start Num: 14

Candidate Starts for Ingrid_50:

(Start: 14 @34682 has 49 MA's), (Start: 18 @34706 has 1 MA's), (23, 34739), (27, 34781),

Gene: Inked_52 Start: 35810, Stop: 35923, Start Num: 14

Candidate Starts for Inked_52:

(Start: 14 @35810 has 49 MA's), (Start: 18 @35834 has 1 MA's),

Gene: Issa_49 Start: 34704, Stop: 34829, Start Num: 14

Candidate Starts for Issa_49:

(Start: 14 @34704 has 49 MA's), (28, 34809),

Gene: JEGGS_51 Start: 32716, Stop: 32814, Start Num: 16

Candidate Starts for JEGGS_51:

(Start: 16 @32716 has 19 MA's), (Start: 18 @32725 has 1 MA's), (20, 32749), (22, 32755), (27, 32800),

Gene: Kardesai_53 Start: 33350, Stop: 33448, Start Num: 16

Candidate Starts for Kardesai_53:

(Start: 16 @33350 has 19 MA's), (Start: 18 @33359 has 1 MA's), (20, 33383), (27, 33434),

Gene: KeaneyLin_51 Start: 33106, Stop: 33204, Start Num: 16

Candidate Starts for KeaneyLin_51:

(Start: 16 @33106 has 19 MA's), (Start: 18 @33115 has 1 MA's), (20, 33139), (22, 33145), (27, 33190),

Gene: KevinMinion_51 Start: 34187, Stop: 34303, Start Num: 15

Candidate Starts for KevinMinion_51:

(Start: 15 @34187 has 1 MA's), (Start: 17 @34205 has 3 MA's), (20, 34232), (27, 34283),

Gene: Kinny_55 Start: 35496, Stop: 35585, Start Num: 18

Candidate Starts for Kinny_55:

(Start: 15 @35478 has 1 MA's), (Start: 18 @35496 has 1 MA's), (20, 35520), (26, 35556), (27, 35571),

Gene: Leathea_52 Start: 33428, Stop: 33523, Start Num: 17

Candidate Starts for Leathea_52:

(1, 33326), (3, 33335), (4, 33347), (5, 33353), (9, 33377), (Start: 15 @33413 has 1 MA's), (Start: 17 @33428 has 3 MA's), (20, 33455), (26, 33491), (27, 33506),

Gene: Lewando_54 Start: 35003, Stop: 35092, Start Num: 18

Candidate Starts for Lewando_54:

(Start: 15 @34985 has 1 MA's), (Start: 18 @35003 has 1 MA's), (20, 35027), (26, 35063), (27, 35078),

Gene: LilHuddy_50 Start: 34898, Stop: 35011, Start Num: 14

Candidate Starts for LilHuddy_50:

(Start: 14 @34898 has 49 MA's), (Start: 18 @34922 has 1 MA's), (23, 34955), (27, 34997),

Gene: Linda_48 Start: 32578, Stop: 32703, Start Num: 14

Candidate Starts for Linda_48:

(Start: 14 @32578 has 49 MA's), (Start: 18 @32605 has 1 MA's), (19, 32617),

Gene: Loretta_50 Start: 34682, Stop: 34798, Start Num: 14

Candidate Starts for Loretta_50:

(Start: 14 @34682 has 49 MA's), (Start: 18 @34706 has 1 MA's), (23, 34739), (27, 34781),

Gene: LucySwiss_49 Start: 34506, Stop: 34631, Start Num: 14

Candidate Starts for LucySwiss_49:

(Start: 14 @34506 has 49 MA's), (24, 34584), (28, 34611),

Gene: Makai_48 Start: 34863, Stop: 34988, Start Num: 14

Candidate Starts for Makai_48:

(2, 34791), (7, 34818), (8, 34833), (Start: 14 @34863 has 49 MA's), (22, 34920), (28, 34968),

Gene: MediumFry_46 Start: 34186, Stop: 34311, Start Num: 14

Candidate Starts for MediumFry_46:

(Start: 14 @34186 has 49 MA's), (28, 34291),

Gene: Michelle_48 Start: 32580, Stop: 32705, Start Num: 14

Candidate Starts for Michelle_48:

(Start: 14 @32580 has 49 MA's), (Start: 18 @32607 has 1 MA's), (19, 32619),

Gene: MiniBagel_48 Start: 35598, Stop: 35723, Start Num: 14

Candidate Starts for MiniBagel_48:

(5, 35544), (Start: 14 @35598 has 49 MA's), (28, 35703),

Gene: Mooshroom_54 Start: 33350, Stop: 33448, Start Num: 16

Candidate Starts for Mooshroom_54:

(Start: 16 @33350 has 19 MA's), (Start: 18 @33359 has 1 MA's), (20, 33383), (22, 33389), (27, 33434),

Gene: MrAaronian_48 Start: 32580, Stop: 32705, Start Num: 14

Candidate Starts for MrAaronian_48:

(Start: 14 @32580 has 49 MA's), (Start: 18 @32607 has 1 MA's), (19, 32619),

Gene: Mudcat_49 Start: 34074, Stop: 34172, Start Num: 16

Candidate Starts for Mudcat_49:

(Start: 16 @34074 has 19 MA's), (Start: 18 @34083 has 1 MA's), (20, 34107), (22, 34113), (27, 34158),

Gene: NapoleonB_52 Start: 33165, Stop: 33263, Start Num: 16

Candidate Starts for NapoleonB_52:

(Start: 16 @33165 has 19 MA's), (Start: 18 @33174 has 1 MA's), (20, 33198), (27, 33249),

Gene: Nason_52 Start: 33235, Stop: 33333, Start Num: 16

Candidate Starts for Nason_52:

(Start: 16 @33235 has 19 MA's), (Start: 18 @33244 has 1 MA's), (20, 33268), (22, 33274), (27, 33319),

Gene: Natasha_48 Start: 32374, Stop: 32499, Start Num: 14

Candidate Starts for Natasha_48:

(Start: 14 @32374 has 49 MA's), (27, 32476),

Gene: Navi1117_53 Start: 34014, Stop: 34142, Start Num: 13

Candidate Starts for Navi1117_53:

(9, 33993), (10, 33996), (11, 33999), (13, 34014), (Start: 15 @34029 has 1 MA's), (Start: 17 @34044 has 3 MA's), (20, 34071), (27, 34122),

Gene: Nightmare_50 Start: 35895, Stop: 36020, Start Num: 14

Candidate Starts for Nightmare_50:

(Start: 14 @35895 has 49 MA's), (28, 36000),

Gene: Niktson_48 Start: 35339, Stop: 35464, Start Num: 14

Candidate Starts for Niktson_48:

(Start: 14 @35339 has 49 MA's), (28, 35444),

Gene: Nivinsha_50 Start: 34832, Stop: 34957, Start Num: 14

Candidate Starts for Nivinsha_50:

(Start: 14 @34832 has 49 MA's), (28, 34937),

Gene: Paella_99 Start: 55132, Stop: 55254, Start Num: 14

Candidate Starts for Paella_99:

(Start: 14 @55132 has 49 MA's),

Gene: Phaby_51 Start: 35428, Stop: 35553, Start Num: 14

Candidate Starts for Phaby_51:

(Start: 14 @35428 has 49 MA's), (27, 35530), (28, 35533),

Gene: Phaila_53 Start: 33410, Stop: 33523, Start Num: 15

Candidate Starts for Phaila_53:

(4, 33344), (5, 33350), (6, 33356), (10, 33377), (13, 33395), (Start: 15 @33410 has 1 MA's), (Start: 17 @33425 has 3 MA's), (20, 33452), (27, 33503),

Gene: Pippin15_45 Start: 31372, Stop: 31491, Start Num: 14

Candidate Starts for Pippin15_45:

(9, 31342), (12, 31354), (Start: 14 @31372 has 49 MA's),

Gene: ProfFrink_48 Start: 32581, Stop: 32706, Start Num: 14

Candidate Starts for ProfFrink_48:

(Start: 14 @32581 has 49 MA's), (Start: 18 @32608 has 1 MA's), (19, 32620),

Gene: Qui_99 Start: 55132, Stop: 55254, Start Num: 14

Candidate Starts for Qui_99:

(Start: 14 @55132 has 49 MA's),

Gene: Raunak_51 Start: 32278, Stop: 32403, Start Num: 14

Candidate Starts for Raunak_51:

(Start: 14 @32278 has 49 MA's), (Start: 18 @32305 has 1 MA's), (19, 32317),

Gene: Renaldo_57 Start: 35312, Stop: 35401, Start Num: 18

Candidate Starts for Renaldo_57:

(Start: 15 @35294 has 1 MA's), (Start: 18 @35312 has 1 MA's), (20, 35336), (26, 35372), (27, 35387),

Gene: RustyBoy_48 Start: 32355, Stop: 32480, Start Num: 14

Candidate Starts for RustyBoy_48:

(Start: 14 @32355 has 49 MA's), (27, 32457),

Gene: Salk_48 Start: 32578, Stop: 32703, Start Num: 14

Candidate Starts for Salk_48:

(Start: 14 @32578 has 49 MA's), (Start: 18 @32605 has 1 MA's), (19, 32617),

Gene: ScienceWizSam_49 Start: 34940, Stop: 35065, Start Num: 14

Candidate Starts for ScienceWizSam_49:

(Start: 14 @34940 has 49 MA's), (28, 35045),

Gene: Serenabean_44 Start: 31433, Stop: 31573, Start Num: 14

Candidate Starts for Serenabean_44:

(Start: 14 @31433 has 49 MA's), (19, 31472), (21, 31487),

Gene: Shepard_51 Start: 34739, Stop: 34852, Start Num: 14

Candidate Starts for Shepard_51:

(Start: 14 @34739 has 49 MA's), (Start: 18 @34763 has 1 MA's), (27, 34838),

Gene: Shiba_47 Start: 32278, Stop: 32403, Start Num: 14

Candidate Starts for Shiba_47:

(Start: 14 @32278 has 49 MA's), (Start: 18 @32305 has 1 MA's), (19, 32317),

Gene: Sloopyjoe_48 Start: 32582, Stop: 32707, Start Num: 14

Candidate Starts for Sloopyjoe_48:

(Start: 14 @32582 has 49 MA's), (Start: 18 @32609 has 1 MA's), (19, 32621),

Gene: Sporto_49 Start: 34042, Stop: 34167, Start Num: 14

Candidate Starts for Sporto_49:

(Start: 14 @34042 has 49 MA's), (Start: 18 @34069 has 1 MA's), (19, 34081), (24, 34120),

Gene: StarLord_48 Start: 32581, Stop: 32706, Start Num: 14

Candidate Starts for StarLord_48:

(Start: 14 @32581 has 49 MA's), (Start: 18 @32608 has 1 MA's), (19, 32620),

Gene: Stayer_48 Start: 32578, Stop: 32703, Start Num: 14

Candidate Starts for Stayer_48:

(Start: 14 @32578 has 49 MA's), (Start: 18 @32605 has 1 MA's), (19, 32617),

Gene: Sweetclover_41 Start: 30218, Stop: 30346, Start Num: 14

Candidate Starts for Sweetclover_41:

(Start: 14 @30218 has 49 MA's), (29, 30329),

Gene: Synopsis_47 Start: 35008, Stop: 35133, Start Num: 14

Candidate Starts for Synopsis_47:

(Start: 14 @35008 has 49 MA's), (28, 35113),

Gene: Tatanka_46 Start: 35128, Stop: 35253, Start Num: 14

Candidate Starts for Tatanka_46:

(Start: 14 @35128 has 49 MA's), (28, 35233),

Gene: Teacup_49 Start: 35368, Stop: 35493, Start Num: 14

Candidate Starts for Teacup_49:

(Start: 14 @35368 has 49 MA's), (28, 35473),

Gene: Tenney120_53 Start: 33971, Stop: 34087, Start Num: 15

Candidate Starts for Tenney120_53:

(Start: 15 @33971 has 1 MA's), (Start: 17 @33989 has 3 MA's), (20, 34016), (27, 34067),

Gene: Tenno_49 Start: 35671, Stop: 35796, Start Num: 14

Candidate Starts for Tenno_49:

(Start: 14 @35671 has 49 MA's), (28, 35776),

Gene: Tokki_53 Start: 35062, Stop: 35187, Start Num: 14

Candidate Starts for Tokki_53:

(Start: 14 @35062 has 49 MA's), (27, 35164), (28, 35167),

Gene: Tribby_53 Start: 33173, Stop: 33274, Start Num: 16

Candidate Starts for Tribby_53:

(Start: 16 @33173 has 19 MA's), (Start: 18 @33182 has 1 MA's), (20, 33206), (22, 33212), (25, 33236), (27, 33257),

Gene: TrixiePhattel_52 Start: 33437, Stop: 33550, Start Num: 15

Candidate Starts for TrixiePhattel_52:

(10, 33404), (13, 33422), (Start: 15 @33437 has 1 MA's), (Start: 17 @33452 has 3 MA's), (20, 33479), (27, 33530),

Gene: Truckee_46 Start: 34653, Stop: 34778, Start Num: 14

Candidate Starts for Truckee_46:

(2, 34581), (7, 34608), (8, 34623), (Start: 14 @34653 has 49 MA's), (22, 34710), (28, 34758),

Gene: Trustiboi_48 Start: 35209, Stop: 35334, Start Num: 14

Candidate Starts for Trustiboi_48:

(Start: 14 @35209 has 49 MA's), (28, 35314),

Gene: Uzumaki_48 Start: 33429, Stop: 33545, Start Num: 15

Candidate Starts for Uzumaki_48:

(Start: 15 @33429 has 1 MA's), (Start: 17 @33447 has 3 MA's), (20, 33474), (27, 33525),

Gene: Xenomorph_49 Start: 32906, Stop: 33004, Start Num: 16

Candidate Starts for Xenomorph_49:

(Start: 16 @32906 has 19 MA's), (Start: 18 @32915 has 1 MA's), (20, 32939), (22, 32945), (25, 32969), (27, 32990),

Gene: Zeina_52 Start: 33997, Stop: 34095, Start Num: 17

Candidate Starts for Zeina_52:

(Start: 15 @33979 has 1 MA's), (Start: 17 @33997 has 3 MA's), (20, 34024), (27, 34075),

Gene: Zippen_50 Start: 35509, Stop: 35622, Start Num: 14

Candidate Starts for Zippen_50:

(Start: 14 @35509 has 49 MA's), (Start: 18 @35533 has 1 MA's), (23, 35566),