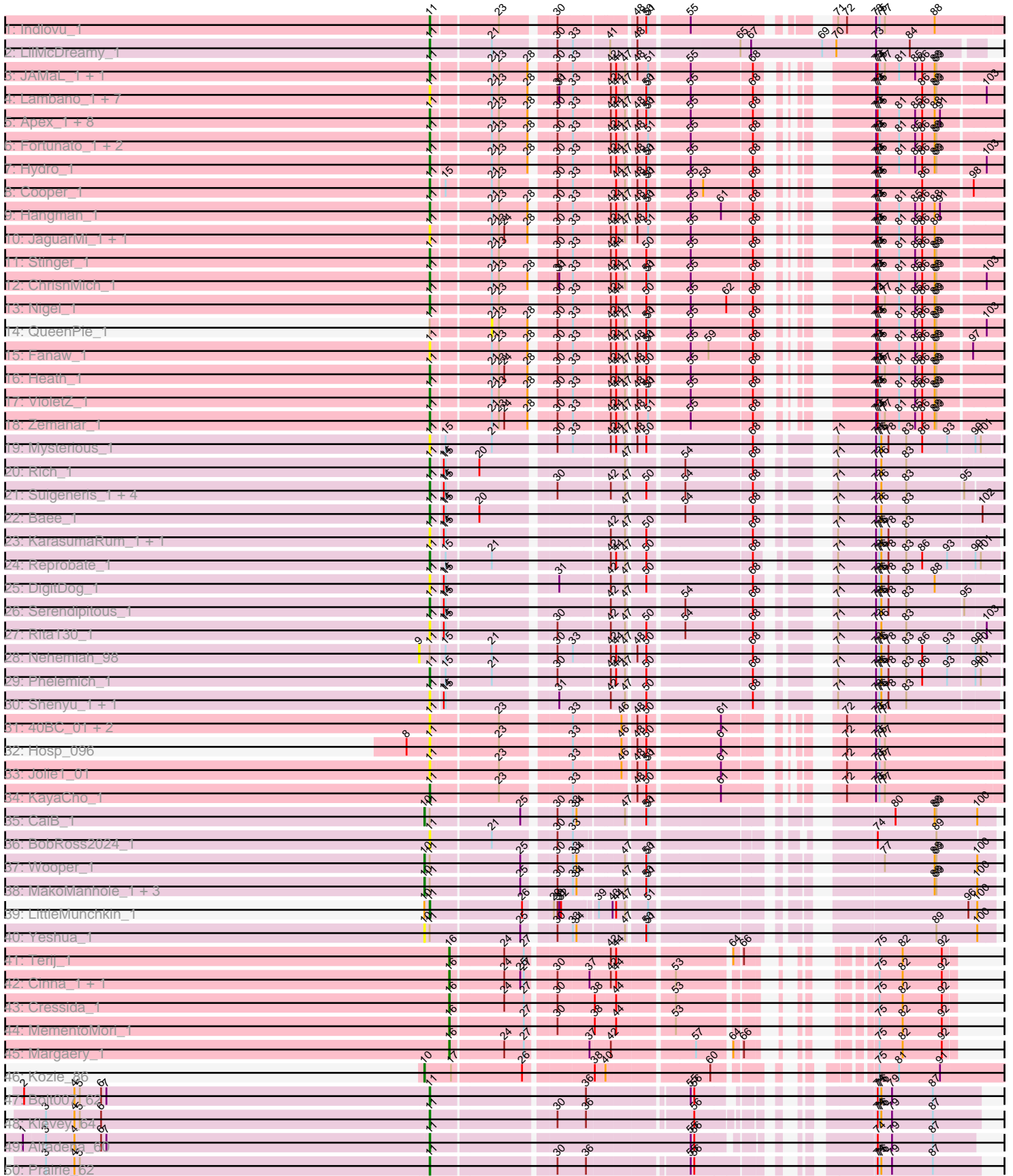


Pham 216057



Note: Tracks are now grouped by subcluster and scaled. Switching in subcluster is indicated by changes in track color. Track scale is now set by default to display the region 30 bp upstream of start 1 to 30 bp downstream of the last possible start. If this default region is judged to be packed too tightly with annotated starts, the track will be further scaled to only show that region of the ORF with annotated starts. This action will be indicated by adding "Zoomed" to the title. For starts, yellow indicates the location of called starts comprised solely of Glimmer/GeneMark auto-annotations, green indicates the location of called starts with at least 1 manual gene annotation.

Pham 216057 Report

This analysis was run 02/22/25 on database version 588.

Pham number 216057 has 91 members, 30 are drafts.

Phages represented in each track:

- Track 1 : Indlovu_1
- Track 2 : LilMcDreamy_1
- Track 3 : JAMaL_1, BobbyK_1
- Track 4 : Lambano_1, Hally898_1, Antihero_1, Epah_1, Ahwei_1, GinPorsche_1, Nanao_1, Poster_1
- Track 5 : Apex_1, Lolalove_1, Prince_1, Waleliano_1, Mudslide_1, BrownCNA_1, Austelle_1, Frederick_1, Mithril_1
- Track 6 : Fortunato_1, Magpie_1, RawrgerThat_1
- Track 7 : Hydro_1
- Track 8 : Cooper_1
- Track 9 : Hangman_1
- Track 10 : JaguarMi_1, Xincheng_1
- Track 11 : Stinger_1
- Track 12 : ChrisnMich_1
- Track 13 : Nigel_1
- Track 14 : QueenPie_1
- Track 15 : Fanaw_1
- Track 16 : Heath_1
- Track 17 : VioletZ_1
- Track 18 : Zemanar_1
- Track 19 : Mysterious_1
- Track 20 : Rich_1
- Track 21 : Suigeneris_1, EastView9101_1, Acadian_1, SirJeffery_1, Donny_1
- Track 22 : Bae_1
- Track 23 : KarasumaRum_1, StinkyVeggy_1
- Track 24 : Reprobate_1
- Track 25 : DigitDog_1
- Track 26 : Serendipitous_1
- Track 27 : Rita130_1
- Track 28 : Nehemiah_98
- Track 29 : Phelemich_1
- Track 30 : Shenyu_1, Nangang_1
- Track 31 : 40BC_01, ForDig_1, 39HC_01
- Track 32 : Hosp_096
- Track 33 : Jolie1_01
- Track 34 : KayaCho_1
- Track 35 : CaiB_1

- Track 36 : BobRoss2024_1
- Track 37 : Wooper_1
- Track 38 : MakoManhole_1, MossRose_1, CloverMinnie_1, AnarQue_1
- Track 39 : LittleMunchkin_1
- Track 40 : Yeshua_1
- Track 41 : Terij_1
- Track 42 : Cinna_1, Matzah_1
- Track 43 : Cressida_1
- Track 44 : MementoMori_1
- Track 45 : Margaery_1
- Track 46 : Kozie_86
- Track 47 : Bolt007_62
- Track 48 : Klevey_64
- Track 49 : Altadena_60
- Track 50 : Prairie_62
- Track 51 : Circuit_59
- Track 52 : CalWood4100_65, Lilmac1015_65
- Track 53 : Bumble_59
- Track 54 : Ottawa_72, Kharcho_72
- Track 55 : Ottawa_73, Kharcho_73
- Track 56 : TurkishDelight_121
- Track 57 : Tonitrus_1

Summary of Final Annotations (See graph section above for start numbers):

The start number called the most often in the published annotations is 11, it was called in 43 of the 61 non-draft genes in the pham.

Genes that call this "Most Annotated" start:

- 39HC_01, 40BC_01, Acadian_1, Ahwei_1, Altadena_60, Antihero_1, Apex_1, Austelle_1, Bae_1, BobRoss2024_1, BobbyK_1, Bolt007_62, BrownCNA_1, Bumble_59, CalWood4100_65, ChrisnMich_1, Circuit_59, Cooper_1, DigitDog_1, Donny_1, EastView9101_1, Epah_1, Fanaw_1, ForDig_1, Fortunato_1, Frederick_1, GinPorsche_1, Hally898_1, Hangman_1, Heath_1, Hosp_096, Hydro_1, Indlovu_1, JAMaL_1, JaguarMi_1, Jolie1_01, KarasumaRum_1, KayaCho_1, Klevey_64, Lambano_1, LilMcDreamy_1, Lilmac1015_65, LittleMunchkin_1, Lolalove_1, Magpie_1, Mithril_1, Mudslide_1, Mysterious_1, Nanao_1, Nangang_1, Nigel_1, Phelemich_1, Poster_1, Prairie_62, Prince_1, RawrgerThat_1, Reprobate_1, Rich_1, Rita130_1, Serendipitous_1, Shenyu_1, SirJeffery_1, Stinger_1, StinkyVeggy_1, Suigeneris_1, TurkishDelight_121, VioletZ_1, Waleliano_1, Xincheng_1, Zemanar_1,

Genes that have the "Most Annotated" start but do not call it:

- AnarQue_1, CaiB_1, CloverMinnie_1, MakoManhole_1, MossRose_1, Nehemiah_98, QueenPie_1, Wooper_1, Yeshua_1,

Genes that do not have the "Most Annotated" start:

- Cinna_1, Cressida_1, Kharcho_72, Kharcho_73, Kozie_86, Margaery_1, Matzah_1, MementoMori_1, Ottawa_72, Ottawa_73, Terij_1, Tonitrus_1,

Summary by start number:

Start 9:

- Found in 1 of 91 (1.1%) of genes in pham
- No Manual Annotations of this start.
- Called 100.0% of time when present
- Phage (with cluster) where this start called: Nehemiah_98 (B5),

Start 10:

- Found in 9 of 91 (9.9%) of genes in pham
- Manual Annotations of this start: 7 of 61
- Called 88.9% of time when present
- Phage (with cluster) where this start called: AnarQue_1 (DR), CaiB_1 (DR), CloverMinnie_1 (DR), Kozie_86 (EI), MakoManhole_1 (DR), MossRose_1 (DR), Wooper_1 (DR), Yeshua_1 (DR),

Start 11:

- Found in 79 of 91 (86.8%) of genes in pham
- Manual Annotations of this start: 43 of 61
- Called 88.6% of time when present
- Phage (with cluster) where this start called: 39HC_01 (B6), 40BC_01 (B6), Acadian_1 (B5), Ahwei_1 (B4), Altadena_60 (FH), Antihero_1 (B4), Apex_1 (B4), Austelle_1 (B4), Bae_1 (B5), BobRoss2024_1 (DR), BobbyK_1 (B4), Bolt007_62 (FH), BrownCNA_1 (B4), Bumble_59 (FH), CalWood4100_65 (FH), ChrisnMich_1 (B4), Circuit_59 (FH), Cooper_1 (B4), DigitDog_1 (B5), Donny_1 (B5), EastView9101_1 (B5), Epah_1 (B4), Fanaw_1 (B4), ForDig_1 (B6), Fortunato_1 (B4), Frederick_1 (B4), GinPorsche_1 (B4), Hally898_1 (B4), Hangman_1 (B4), Heath_1 (B4), Hosp_096 (B6), Hydro_1 (B4), Indlovu_1 (B11), JAMaL_1 (B4), JaguarMi_1 (B4), Jolie1_01 (B6), KarasumaRum_1 (B5), KayaCho_1 (B6), Klevey_64 (FH), Lambano_1 (B4), LilMcDreamy_1 (B12), Lilmac1015_65 (FH), LittleMunchkin_1 (DR), Lolalove_1 (B4), Magpie_1 (B4), Mithril_1 (B4), Mudslide_1 (B4), Mysterious_1 (B5), Nanao_1 (B4), Nangang_1 (B5), Nigel_1 (B4), Phelemich_1 (B5), Poster_1 (B4), Prairie_62 (FH), Prince_1 (B4), RawrgerThat_1 (B4), Reprobate_1 (B5), Rich_1 (B5), Rita130_1 (B5), Serendipitous_1 (B5), Shenyu_1 (B5), SirJeffery_1 (B5), Stinger_1 (B4), StinkyVeggy_1 (B5), Suigeneris_1 (B5), TurkishDelight_121 (singleton), VioletZ_1 (B4), Waleliano_1 (B4), Xincheng_1 (B4), Zemanar_1 (B4),

Start 12:

- Found in 2 of 91 (2.2%) of genes in pham
- Manual Annotations of this start: 2 of 61
- Called 100.0% of time when present
- Phage (with cluster) where this start called: Kharcho_72 (FM), Ottawa_72 (FM),

Start 13:

- Found in 1 of 91 (1.1%) of genes in pham
- Manual Annotations of this start: 1 of 61
- Called 100.0% of time when present
- Phage (with cluster) where this start called: Tonitrus_1 (singleton),

Start 16:

- Found in 6 of 91 (6.6%) of genes in pham
- Manual Annotations of this start: 6 of 61
- Called 100.0% of time when present

- Phage (with cluster) where this start called: Cinna_1 (EI), Cressida_1 (EI), Margaery_1 (EI), Matzah_1 (EI), MementoMori_1 (EI), Terij_1 (EI),

Start 18:

- Found in 2 of 91 (2.2%) of genes in pham
- Manual Annotations of this start: 2 of 61
- Called 100.0% of time when present
- Phage (with cluster) where this start called: Kharcho_73 (FM), Ottawa_73 (FM),

Start 21:

- Found in 41 of 91 (45.1%) of genes in pham
- No Manual Annotations of this start.
- Called 2.4% of time when present
- Phage (with cluster) where this start called: QueenPie_1 (B4),

Summary by clusters:

There are 10 clusters represented in this pham: singleton, EI, B4, B5, B6, B12, B11, FH, DR, FM,

Info for manual annotations of cluster B11:

- Start number 11 was manually annotated 1 time for cluster B11.

Info for manual annotations of cluster B12:

- Start number 11 was manually annotated 1 time for cluster B12.

Info for manual annotations of cluster B4:

- Start number 11 was manually annotated 23 times for cluster B4.

Info for manual annotations of cluster B5:

- Start number 11 was manually annotated 9 times for cluster B5.

Info for manual annotations of cluster B6:

- Start number 11 was manually annotated 1 time for cluster B6.

Info for manual annotations of cluster DR:

- Start number 10 was manually annotated 6 times for cluster DR.
- Start number 11 was manually annotated 1 time for cluster DR.

Info for manual annotations of cluster EI:

- Start number 10 was manually annotated 1 time for cluster EI.
- Start number 16 was manually annotated 6 times for cluster EI.

Info for manual annotations of cluster FH:

- Start number 11 was manually annotated 6 times for cluster FH.

Info for manual annotations of cluster FM:

- Start number 12 was manually annotated 2 times for cluster FM.
- Start number 18 was manually annotated 2 times for cluster FM.

Gene Information:

Gene: 39HC_01 Start: 1, Stop: 810, Start Num: 11

Candidate Starts for 39HC_01:

(Start: 11 @1 has 43 MA's), (23, 106), (33, 208), (46, 277), (48, 295), (50, 310), (61, 424), (72, 541), (73, 586), (75, 592), (77, 601),

Gene: 40BC_01 Start: 1, Stop: 810, Start Num: 11

Candidate Starts for 40BC_01:

(Start: 11 @1 has 43 MA's), (23, 106), (33, 208), (46, 277), (48, 295), (50, 310), (61, 424), (72, 541), (73, 586), (75, 592), (77, 601),

Gene: Acadian_1 Start: 1, Stop: 816, Start Num: 11

Candidate Starts for Acadian_1:

(Start: 11 @1 has 43 MA's), (14, 16), (15, 19), (30, 178), (42, 256), (47, 277), (50, 304), (54, 358), (68, 463), (71, 538), (73, 595), (76, 604), (83, 646), (95, 739),

Gene: Ahwei_1 Start: 1, Stop: 798, Start Num: 11

Candidate Starts for Ahwei_1:

(Start: 11 @1 has 43 MA's), (21, 88), (23, 100), (28, 148), (30, 178), (31, 181), (33, 202), (42, 256), (44, 262), (47, 277), (50, 304), (51, 307), (55, 367), (68, 466), (73, 577), (74, 580), (75, 583), (86, 655), (88, 676), (89, 679), (103, 754),

Gene: Altadena_60 Start: 38689, Stop: 39465, Start Num: 11

Candidate Starts for Altadena_60:

(1, 38008), (3, 38044), (4, 38092), (6, 38137), (7, 38146), (Start: 11 @38689 has 43 MA's), (55, 39097), (56, 39103), (74, 39301), (79, 39325), (87, 39394),

Gene: AnarQue_1 Start: 1, Stop: 804, Start Num: 10

Candidate Starts for AnarQue_1:

(Start: 10 @1 has 7 MA's), (Start: 11 @10 has 43 MA's), (25, 151), (30, 193), (33, 217), (34, 223), (47, 292), (50, 319), (51, 322), (88, 703), (89, 706), (100, 775),

Gene: Antihero_1 Start: 1, Stop: 798, Start Num: 11

Candidate Starts for Antihero_1:

(Start: 11 @1 has 43 MA's), (21, 88), (23, 100), (28, 148), (30, 178), (31, 181), (33, 202), (42, 256), (44, 262), (47, 277), (50, 304), (51, 307), (55, 367), (68, 466), (73, 577), (74, 580), (75, 583), (86, 655), (88, 676), (89, 679), (103, 754),

Gene: Apex_1 Start: 1, Stop: 798, Start Num: 11

Candidate Starts for Apex_1:

(Start: 11 @1 has 43 MA's), (21, 88), (23, 100), (28, 148), (30, 178), (33, 202), (42, 256), (44, 262), (47, 277), (48, 289), (50, 304), (51, 307), (55, 367), (68, 466), (73, 577), (74, 580), (75, 583), (81, 616), (85, 643), (86, 655), (88, 676), (91, 685),

Gene: Austelle_1 Start: 1, Stop: 798, Start Num: 11

Candidate Starts for Austelle_1:

(Start: 11 @1 has 43 MA's), (21, 88), (23, 100), (28, 148), (30, 178), (33, 202), (42, 256), (44, 262), (47, 277), (48, 289), (50, 304), (51, 307), (55, 367), (68, 466), (73, 577), (74, 580), (75, 583), (81, 616), (85, 643), (86, 655), (88, 676), (91, 685),

Gene: Bae_1 Start: 1, Stop: 822, Start Num: 11

Candidate Starts for Bae_1:

(Start: 11 @1 has 43 MA's), (14, 16), (15, 19), (20, 67), (47, 277), (54, 358), (68, 463), (71, 538), (73, 595), (76, 604), (83, 646), (102, 769),

Gene: BobRoss2024_1 Start: 1, Stop: 780, Start Num: 11

Candidate Starts for BobRoss2024_1:

(Start: 11 @1 has 43 MA's), (21, 97), (30, 187), (33, 211), (74, 589), (89, 688),

Gene: BobbyK_1 Start: 1, Stop: 798, Start Num: 11

Candidate Starts for BobbyK_1:

(Start: 11 @1 has 43 MA's), (21, 88), (23, 100), (28, 148), (30, 178), (33, 202), (42, 256), (44, 262), (47, 277), (48, 289), (51, 307), (55, 367), (68, 466), (73, 577), (74, 580), (75, 583), (77, 592), (81, 616), (85, 643), (86, 655), (88, 676), (89, 679),

Gene: Bolt007_62 Start: 40946, Stop: 41710, Start Num: 11

Candidate Starts for Bolt007_62:

(2, 40265), (4, 40349), (5, 40358), (6, 40394), (7, 40403), (Start: 11 @40946 has 43 MA's), (36, 41186), (55, 41339), (56, 41345), (74, 41537), (75, 41540), (76, 41543), (79, 41561), (87, 41630),

Gene: BrownCNA_1 Start: 1, Stop: 798, Start Num: 11

Candidate Starts for BrownCNA_1:

(Start: 11 @1 has 43 MA's), (21, 88), (23, 100), (28, 148), (30, 178), (33, 202), (42, 256), (44, 262), (47, 277), (48, 289), (50, 304), (51, 307), (55, 367), (68, 466), (73, 577), (74, 580), (75, 583), (81, 616), (85, 643), (86, 655), (88, 676), (91, 685),

Gene: Bumble_59 Start: 39508, Stop: 40269, Start Num: 11

Candidate Starts for Bumble_59:

(Start: 11 @39508 has 43 MA's), (36, 39748), (52, 39865), (56, 39907), (74, 40111), (79, 40135), (80, 40141), (87, 40204),

Gene: CaiB_1 Start: 1, Stop: 804, Start Num: 10

Candidate Starts for CaiB_1:

(Start: 10 @1 has 7 MA's), (Start: 11 @10 has 43 MA's), (25, 151), (30, 193), (33, 217), (34, 223), (47, 292), (50, 319), (51, 322), (80, 637), (88, 703), (89, 706), (100, 775),

Gene: CalWood4100_65 Start: 40886, Stop: 41671, Start Num: 11

Candidate Starts for CalWood4100_65:

(Start: 11 @40886 has 43 MA's), (30, 41078), (36, 41126), (49, 41210), (55, 41279), (56, 41285), (74, 41498), (75, 41501), (76, 41504), (79, 41522), (87, 41591),

Gene: ChrisnMich_1 Start: 1, Stop: 798, Start Num: 11

Candidate Starts for ChrisnMich_1:

(Start: 11 @1 has 43 MA's), (21, 88), (23, 100), (28, 148), (30, 178), (31, 181), (33, 202), (42, 256), (44, 262), (47, 277), (50, 304), (51, 307), (55, 367), (68, 466), (73, 577), (74, 580), (75, 583), (81, 616), (85, 643), (86, 655), (88, 676), (89, 679), (103, 754),

Gene: Cinna_1 Start: 1, Stop: 648, Start Num: 16

Candidate Starts for Cinna_1:

(Start: 16 @1 has 6 MA's), (24, 85), (25, 112), (27, 118), (30, 160), (37, 211), (42, 244), (44, 250), (53, 337), (75, 523), (82, 562), (92, 628),

Gene: Circuit_59 Start: 40042, Stop: 40803, Start Num: 11

Candidate Starts for Circuit_59:

(Start: 11 @40042 has 43 MA's), (56, 40438), (74, 40645), (75, 40648), (79, 40669), (80, 40675), (87, 40738), (91, 40750),

Gene: CloverMinnie_1 Start: 1, Stop: 804, Start Num: 10

Candidate Starts for CloverMinnie_1:

(Start: 10 @1 has 7 MA's), (Start: 11 @10 has 43 MA's), (25, 151), (30, 193), (33, 217), (34, 223), (47, 292), (50, 319), (51, 322), (88, 703), (89, 706), (100, 775),

Gene: Cooper_1 Start: 1, Stop: 798, Start Num: 11

Candidate Starts for Cooper_1:

(Start: 11 @1 has 43 MA's), (15, 19), (21, 88), (23, 100), (30, 178), (33, 202), (44, 262), (47, 277), (48, 289), (50, 304), (51, 307), (55, 367), (58, 388), (68, 466), (73, 577), (74, 580), (75, 583), (86, 655), (98, 733),

Gene: Cressida_1 Start: 1, Stop: 645, Start Num: 16

Candidate Starts for Cressida_1:

(Start: 16 @1 has 6 MA's), (24, 85), (27, 118), (30, 160), (38, 217), (44, 247), (53, 334), (75, 520), (82, 559), (92, 625),

Gene: DigitDog_1 Start: 1, Stop: 807, Start Num: 11

Candidate Starts for DigitDog_1:

(Start: 11 @1 has 43 MA's), (14, 16), (15, 19), (31, 181), (42, 256), (47, 277), (50, 304), (68, 463), (71, 538), (73, 595), (75, 601), (76, 604), (78, 616), (83, 646), (88, 694),

Gene: Donny_1 Start: 1, Stop: 816, Start Num: 11

Candidate Starts for Donny_1:

(Start: 11 @1 has 43 MA's), (14, 16), (15, 19), (30, 178), (42, 256), (47, 277), (50, 304), (54, 358), (68, 463), (71, 538), (73, 595), (76, 604), (83, 646), (95, 739),

Gene: EastView9101_1 Start: 1, Stop: 816, Start Num: 11

Candidate Starts for EastView9101_1:

(Start: 11 @1 has 43 MA's), (14, 16), (15, 19), (30, 178), (42, 256), (47, 277), (50, 304), (54, 358), (68, 463), (71, 538), (73, 595), (76, 604), (83, 646), (95, 739),

Gene: Epah_1 Start: 1, Stop: 798, Start Num: 11

Candidate Starts for Epah_1:

(Start: 11 @1 has 43 MA's), (21, 88), (23, 100), (28, 148), (30, 178), (31, 181), (33, 202), (42, 256), (44, 262), (47, 277), (50, 304), (51, 307), (55, 367), (68, 466), (73, 577), (74, 580), (75, 583), (86, 655), (88, 676), (89, 679), (103, 754),

Gene: Fanaw_1 Start: 1, Stop: 798, Start Num: 11

Candidate Starts for Fanaw_1:

(Start: 11 @1 has 43 MA's), (21, 88), (23, 100), (28, 148), (30, 178), (33, 202), (42, 256), (44, 262), (47, 277), (48, 289), (50, 304), (51, 307), (55, 367), (59, 397), (68, 466), (73, 577), (74, 580), (75, 583), (81, 616), (85, 643), (86, 655), (88, 676), (89, 679), (97, 733),

Gene: ForDig_1 Start: 1, Stop: 810, Start Num: 11

Candidate Starts for ForDig_1:

(Start: 11 @1 has 43 MA's), (23, 106), (33, 208), (46, 277), (48, 295), (50, 310), (61, 424), (72, 541), (73, 586), (75, 592), (77, 601),

Gene: Fortunato_1 Start: 1, Stop: 798, Start Num: 11

Candidate Starts for Fortunato_1:

(Start: 11 @1 has 43 MA's), (21, 88), (23, 100), (28, 148), (30, 178), (33, 202), (42, 256), (44, 262), (47, 277), (48, 289), (51, 307), (55, 367), (68, 466), (73, 577), (74, 580), (75, 583), (81, 616), (85, 643), (86, 655), (88, 676), (89, 679),

Gene: Frederick_1 Start: 1, Stop: 798, Start Num: 11

Candidate Starts for Frederick_1:

(Start: 11 @1 has 43 MA's), (21, 88), (23, 100), (28, 148), (30, 178), (33, 202), (42, 256), (44, 262), (47, 277), (48, 289), (50, 304), (51, 307), (55, 367), (68, 466), (73, 577), (74, 580), (75, 583), (81, 616), (85, 643), (86, 655), (88, 676), (91, 685),

Gene: GinPorsche_1 Start: 1, Stop: 798, Start Num: 11

Candidate Starts for GinPorsche_1:

(Start: 11 @1 has 43 MA's), (21, 88), (23, 100), (28, 148), (30, 178), (31, 181), (33, 202), (42, 256), (44, 262), (47, 277), (50, 304), (51, 307), (55, 367), (68, 466), (73, 577), (74, 580), (75, 583), (86, 655), (88, 676), (89, 679), (103, 754),

Gene: Hally898_1 Start: 1, Stop: 798, Start Num: 11

Candidate Starts for Hally898_1:

(Start: 11 @1 has 43 MA's), (21, 88), (23, 100), (28, 148), (30, 178), (31, 181), (33, 202), (42, 256), (44, 262), (47, 277), (50, 304), (51, 307), (55, 367), (68, 466), (73, 577), (74, 580), (75, 583), (86, 655), (88, 676), (89, 679), (103, 754),

Gene: Hangman_1 Start: 1, Stop: 798, Start Num: 11

Candidate Starts for Hangman_1:

(Start: 11 @1 has 43 MA's), (21, 88), (23, 100), (28, 148), (30, 178), (33, 202), (42, 256), (44, 262), (47, 277), (48, 289), (50, 304), (51, 307), (55, 367), (61, 418), (68, 466), (73, 577), (74, 580), (75, 583), (81, 616), (85, 643), (86, 655), (88, 676), (91, 685),

Gene: Heath_1 Start: 1, Stop: 798, Start Num: 11

Candidate Starts for Heath_1:

(Start: 11 @1 has 43 MA's), (21, 88), (23, 100), (24, 109), (28, 148), (30, 178), (33, 202), (42, 256), (44, 262), (47, 277), (48, 289), (50, 304), (55, 367), (68, 466), (73, 577), (74, 580), (75, 583), (77, 592), (81, 616), (85, 643), (86, 655), (88, 676), (89, 679),

Gene: Hosp_096 Start: 68870, Stop: 69679, Start Num: 11

Candidate Starts for Hosp_096:

(8, 68831), (Start: 11 @68870 has 43 MA's), (23, 68975), (33, 69077), (46, 69146), (48, 69164), (50, 69179), (61, 69293), (72, 69410), (73, 69455), (75, 69461), (77, 69470),

Gene: Hydro_1 Start: 1, Stop: 798, Start Num: 11

Candidate Starts for Hydro_1:

(Start: 11 @1 has 43 MA's), (21, 88), (23, 100), (28, 148), (30, 178), (33, 202), (42, 256), (44, 262), (47, 277), (48, 289), (50, 304), (51, 307), (55, 367), (68, 466), (73, 577), (74, 580), (75, 583), (81, 616), (85, 643), (86, 655), (88, 676), (89, 679), (103, 754),

Gene: Indlovu_1 Start: 1, Stop: 825, Start Num: 11

Candidate Starts for Indlovu_1:

(Start: 11 @1 has 43 MA's), (23, 100), (30, 178), (48, 289), (50, 304), (51, 307), (55, 367), (71, 538), (72, 553), (73, 598), (75, 604), (77, 613), (88, 697),

Gene: JAMaL_1 Start: 1, Stop: 798, Start Num: 11

Candidate Starts for JAMaL_1:

(Start: 11 @1 has 43 MA's), (21, 88), (23, 100), (28, 148), (30, 178), (33, 202), (42, 256), (44, 262), (47, 277), (48, 289), (51, 307), (55, 367), (68, 466), (73, 577), (74, 580), (75, 583), (77, 592), (81, 616), (85, 643), (86, 655), (88, 676), (89, 679),

Gene: JaguarMi_1 Start: 1, Stop: 798, Start Num: 11

Candidate Starts for JaguarMi_1:

(Start: 11 @1 has 43 MA's), (21, 88), (23, 100), (24, 109), (28, 148), (30, 178), (33, 202), (42, 256), (44, 262), (47, 277), (48, 289), (51, 307), (55, 367), (68, 466), (73, 577), (74, 580), (75, 583), (81, 616), (85, 643), (86, 655), (88, 676),

Gene: Jolie1_01 Start: 1, Stop: 810, Start Num: 11

Candidate Starts for Jolie1_01:

(Start: 11 @1 has 43 MA's), (23, 106), (33, 208), (46, 277), (48, 295), (50, 310), (51, 313), (61, 424), (72, 541), (73, 586), (75, 592), (77, 601),

Gene: KarasumaRum_1 Start: 1, Stop: 807, Start Num: 11

Candidate Starts for KarasumaRum_1:

(Start: 11 @1 has 43 MA's), (14, 16), (15, 19), (42, 256), (47, 277), (50, 304), (68, 463), (71, 538), (73, 595), (75, 601), (76, 604), (78, 616), (83, 646),

Gene: KayaCho_1 Start: 1, Stop: 813, Start Num: 11

Candidate Starts for KayaCho_1:

(Start: 11 @1 has 43 MA's), (23, 106), (33, 208), (48, 295), (50, 310), (61, 424), (72, 544), (73, 589), (75, 595), (77, 604),

Gene: Kharcho_73 Start: 42919, Stop: 43530, Start Num: 18

Candidate Starts for Kharcho_73:

(Start: 18 @42919 has 2 MA's), (44, 43129), (62, 43291),

Gene: Kharcho_72 Start: 42263, Stop: 42922, Start Num: 12

Candidate Starts for Kharcho_72:

(Start: 12 @42263 has 2 MA's), (19, 42293), (26, 42395), (90, 42872),

Gene: Klevey_64 Start: 40643, Stop: 41416, Start Num: 11

Candidate Starts for Klevey_64:

(3, 39998), (4, 40046), (5, 40055), (6, 40091), (Start: 11 @40643 has 43 MA's), (30, 40835), (36, 40883), (56, 41042), (74, 41243), (75, 41246), (76, 41249), (79, 41267), (87, 41336),

Gene: Kozie_86 Start: 51332, Stop: 52135, Start Num: 10

Candidate Starts for Kozie_86:

(Start: 10 @51332 has 7 MA's), (17, 51377), (26, 51488), (38, 51590), (40, 51605), (60, 51764), (75, 51926), (81, 51959), (91, 52028),

Gene: Lambano_1 Start: 1, Stop: 798, Start Num: 11

Candidate Starts for Lambano_1:

(Start: 11 @1 has 43 MA's), (21, 88), (23, 100), (28, 148), (30, 178), (31, 181), (33, 202), (42, 256), (44, 262), (47, 277), (50, 304), (51, 307), (55, 367), (68, 466), (73, 577), (74, 580), (75, 583), (86, 655), (88, 676), (89, 679), (103, 754),

Gene: LilMcDreamy_1 Start: 1, Stop: 852, Start Num: 11

Candidate Starts for LilMcDreamy_1:

(Start: 11 @1 has 43 MA's), (21, 97), (30, 187), (33, 211), (41, 265), (48, 298), (65, 457), (67, 475), (69, 595), (70, 619), (73, 679), (84, 736),

Gene: Lilmac1015_65 Start: 40886, Stop: 41671, Start Num: 11

Candidate Starts for Lilmac1015_65:

(Start: 11 @40886 has 43 MA's), (30, 41078), (36, 41126), (49, 41210), (55, 41279), (56, 41285), (74, 41498), (75, 41501), (76, 41504), (79, 41522), (87, 41591),

Gene: LittleMunchkin_1 Start: 10, Stop: 807, Start Num: 11

Candidate Starts for LittleMunchkin_1:

(Start: 10 @1 has 7 MA's), (Start: 11 @10 has 43 MA's), (26, 154), (29, 187), (30, 193), (31, 196), (32, 199), (39, 250), (43, 271), (44, 277), (47, 292), (51, 322), (96, 763), (100, 778),

Gene: Lolalove_1 Start: 1, Stop: 798, Start Num: 11

Candidate Starts for Lolalove_1:

(Start: 11 @1 has 43 MA's), (21, 88), (23, 100), (28, 148), (30, 178), (33, 202), (42, 256), (44, 262), (47, 277), (48, 289), (50, 304), (51, 307), (55, 367), (68, 466), (73, 577), (74, 580), (75, 583), (81, 616), (85, 643), (86, 655), (88, 676), (91, 685),

Gene: Magpie_1 Start: 1, Stop: 798, Start Num: 11

Candidate Starts for Magpie_1:

(Start: 11 @1 has 43 MA's), (21, 88), (23, 100), (28, 148), (30, 178), (33, 202), (42, 256), (44, 262), (47, 277), (48, 289), (51, 307), (55, 367), (68, 466), (73, 577), (74, 580), (75, 583), (81, 616), (85, 643), (86, 655), (88, 676), (89, 679),

Gene: MakoManhole_1 Start: 1, Stop: 804, Start Num: 10

Candidate Starts for MakoManhole_1:

(Start: 10 @1 has 7 MA's), (Start: 11 @10 has 43 MA's), (25, 151), (30, 193), (33, 217), (34, 223), (47, 292), (50, 319), (51, 322), (88, 703), (89, 706), (100, 775),

Gene: Margaery_1 Start: 1, Stop: 645, Start Num: 16

Candidate Starts for Margaery_1:

(Start: 16 @1 has 6 MA's), (24, 85), (27, 118), (37, 211), (42, 241), (57, 367), (64, 418), (66, 430), (75, 520), (82, 559), (92, 625),

Gene: Matzah_1 Start: 1, Stop: 648, Start Num: 16

Candidate Starts for Matzah_1:

(Start: 16 @1 has 6 MA's), (24, 85), (25, 112), (27, 118), (30, 160), (37, 211), (42, 244), (44, 250), (53, 337), (75, 523), (82, 562), (92, 628),

Gene: MementoMori_1 Start: 1, Stop: 645, Start Num: 16

Candidate Starts for MementoMori_1:

(Start: 16 @1 has 6 MA's), (27, 118), (30, 160), (38, 217), (44, 247), (53, 334), (75, 520), (82, 559), (92, 625),

Gene: Mithril_1 Start: 1, Stop: 798, Start Num: 11

Candidate Starts for Mithril_1:

(Start: 11 @1 has 43 MA's), (21, 88), (23, 100), (28, 148), (30, 178), (33, 202), (42, 256), (44, 262), (47, 277), (48, 289), (50, 304), (51, 307), (55, 367), (68, 466), (73, 577), (74, 580), (75, 583), (81, 616), (85, 643), (86, 655), (88, 676), (91, 685),

Gene: MossRose_1 Start: 1, Stop: 804, Start Num: 10

Candidate Starts for MossRose_1:

(Start: 10 @1 has 7 MA's), (Start: 11 @10 has 43 MA's), (25, 151), (30, 193), (33, 217), (34, 223), (47, 292), (50, 319), (51, 322), (88, 703), (89, 706), (100, 775),

Gene: Mudslide_1 Start: 1, Stop: 798, Start Num: 11

Candidate Starts for Mudslide_1:

(Start: 11 @1 has 43 MA's), (21, 88), (23, 100), (28, 148), (30, 178), (33, 202), (42, 256), (44, 262), (47, 277), (48, 289), (50, 304), (51, 307), (55, 367), (68, 466), (73, 577), (74, 580), (75, 583), (81, 616), (85, 643), (86, 655), (88, 676), (91, 685),

Gene: Mysterious_1 Start: 1, Stop: 813, Start Num: 11

Candidate Starts for Mysterious_1:

(Start: 11 @1 has 43 MA's), (15, 19), (21, 88), (30, 178), (33, 202), (42, 256), (44, 262), (47, 277), (48, 289), (50, 304), (68, 463), (71, 535), (73, 592), (75, 598), (76, 601), (78, 613), (83, 643), (86, 670), (93, 712), (99, 754), (101, 763),

Gene: Nanao_1 Start: 1, Stop: 798, Start Num: 11

Candidate Starts for Nanao_1:

(Start: 11 @1 has 43 MA's), (21, 88), (23, 100), (28, 148), (30, 178), (31, 181), (33, 202), (42, 256), (44, 262), (47, 277), (50, 304), (51, 307), (55, 367), (68, 466), (73, 577), (74, 580), (75, 583), (86, 655), (88, 676), (89, 679), (103, 754),

Gene: Nangang_1 Start: 1, Stop: 807, Start Num: 11

Candidate Starts for Nangang_1:

(Start: 11 @1 has 43 MA's), (14, 16), (15, 19), (31, 181), (42, 256), (47, 277), (50, 304), (68, 463), (71, 538), (73, 595), (75, 601), (76, 604), (78, 616), (83, 646),

Gene: Nehemiah_98 Start: 70135, Stop: 813, Start Num: 9

Candidate Starts for Nehemiah_98:

(9, 70135), (Start: 11 @70153 has 43 MA's), (15, 70171), (21, 70240), (30, 70330), (33, 70354), (42, 70408), (44, 70414), (47, 70429), (48, 70441), (50, 70456), (68, 70615), (71, 70687), (73, 70744), (75, 70750), (76, 70753), (78, 70765), (83, 70795), (86, 70822), (93, 70864), (99, 70906), (101, 70915),

Gene: Nigel_1 Start: 1, Stop: 789, Start Num: 11

Candidate Starts for Nigel_1:

(Start: 11 @1 has 43 MA's), (21, 88), (23, 100), (30, 178), (33, 202), (42, 256), (44, 262), (50, 304), (55, 367), (62, 427), (68, 466), (73, 568), (74, 571), (77, 583), (81, 607), (85, 634), (86, 646), (88, 667), (89, 670),

Gene: Ottawa_72 Start: 42213, Stop: 42872, Start Num: 12

Candidate Starts for Ottawa_72:

(Start: 12 @42213 has 2 MA's), (19, 42243), (26, 42345), (90, 42822),

Gene: Ottawa_73 Start: 42869, Stop: 43480, Start Num: 18

Candidate Starts for Ottawa_73:

(Start: 18 @42869 has 2 MA's), (44, 43079), (62, 43241),

Gene: Phelemich_1 Start: 1, Stop: 813, Start Num: 11

Candidate Starts for Phelemich_1:

(Start: 11 @1 has 43 MA's), (15, 19), (21, 88), (30, 178), (42, 256), (44, 262), (47, 277), (50, 304), (68, 463), (71, 535), (73, 592), (75, 598), (76, 601), (78, 613), (83, 643), (86, 670), (93, 712), (99, 754), (101, 763),

Gene: Poster_1 Start: 1, Stop: 798, Start Num: 11

Candidate Starts for Poster_1:

(Start: 11 @1 has 43 MA's), (21, 88), (23, 100), (28, 148), (30, 178), (31, 181), (33, 202), (42, 256), (44, 262), (47, 277), (50, 304), (51, 307), (55, 367), (68, 466), (73, 577), (74, 580), (75, 583), (86, 655), (88, 676), (89, 679), (103, 754),

Gene: Prairie_62 Start: 40182, Stop: 40967, Start Num: 11

Candidate Starts for Prairie_62:

(3, 39537), (4, 39585), (5, 39594), (Start: 11 @40182 has 43 MA's), (30, 40374), (36, 40422), (55, 40575), (56, 40581), (74, 40794), (75, 40797), (76, 40800), (79, 40818), (87, 40887),

Gene: Prince_1 Start: 1, Stop: 798, Start Num: 11

Candidate Starts for Prince_1:

(Start: 11 @1 has 43 MA's), (21, 88), (23, 100), (28, 148), (30, 178), (33, 202), (42, 256), (44, 262), (47, 277), (48, 289), (50, 304), (51, 307), (55, 367), (68, 466), (73, 577), (74, 580), (75, 583), (81, 616), (85, 643), (86, 655), (88, 676), (91, 685),

Gene: QueenPie_1 Start: 88, Stop: 798, Start Num: 21

Candidate Starts for QueenPie_1:

(Start: 11 @1 has 43 MA's), (21, 88), (23, 100), (28, 148), (30, 178), (33, 202), (42, 256), (44, 262), (47, 277), (50, 304), (51, 307), (55, 367), (68, 466), (73, 577), (74, 580), (75, 583), (81, 616), (85, 643), (86, 655), (88, 676), (89, 679), (103, 754),

Gene: RawrgerThat_1 Start: 1, Stop: 798, Start Num: 11

Candidate Starts for RawrgerThat_1:

(Start: 11 @1 has 43 MA's), (21, 88), (23, 100), (28, 148), (30, 178), (33, 202), (42, 256), (44, 262), (47, 277), (48, 289), (51, 307), (55, 367), (68, 466), (73, 577), (74, 580), (75, 583), (81, 616), (85, 643), (86, 655), (88, 676), (89, 679),

Gene: Reprobate_1 Start: 1, Stop: 810, Start Num: 11

Candidate Starts for Reprobate_1:

(Start: 11 @1 has 43 MA's), (15, 19), (21, 88), (42, 256), (44, 262), (47, 277), (50, 304), (68, 463), (71, 532), (73, 589), (75, 595), (76, 598), (78, 610), (83, 640), (86, 667), (93, 709), (99, 751), (101, 760),

Gene: Rich_1 Start: 1, Stop: 819, Start Num: 11

Candidate Starts for Rich_1:

(Start: 11 @1 has 43 MA's), (14, 16), (15, 19), (20, 67), (47, 277), (54, 358), (68, 463), (71, 538), (73, 595), (76, 604), (83, 646),

Gene: Rita130_1 Start: 1, Stop: 816, Start Num: 11

Candidate Starts for Rita130_1:

(Start: 11 @1 has 43 MA's), (14, 16), (15, 19), (30, 178), (42, 256), (47, 277), (50, 304), (54, 358), (68, 463), (71, 538), (73, 595), (76, 604), (83, 646), (103, 769),

Gene: Serendipitous_1 Start: 1, Stop: 816, Start Num: 11

Candidate Starts for Serendipitous_1:

(Start: 11 @1 has 43 MA's), (14, 16), (15, 19), (42, 256), (47, 277), (54, 358), (68, 463), (71, 538), (73, 595), (75, 601), (76, 604), (78, 616), (83, 646), (95, 739),

Gene: Shenyu_1 Start: 1, Stop: 807, Start Num: 11

Candidate Starts for Shenyu_1:

(Start: 11 @1 has 43 MA's), (14, 16), (15, 19), (31, 181), (42, 256), (47, 277), (50, 304), (68, 463), (71, 538), (73, 595), (75, 601), (76, 604), (78, 616), (83, 646),

Gene: SirJeffery_1 Start: 1, Stop: 816, Start Num: 11

Candidate Starts for SirJeffery_1:

(Start: 11 @1 has 43 MA's), (14, 16), (15, 19), (30, 178), (42, 256), (47, 277), (50, 304), (54, 358), (68, 463), (71, 538), (73, 595), (76, 604), (83, 646), (95, 739),

Gene: Stinger_1 Start: 1, Stop: 789, Start Num: 11

Candidate Starts for Stinger_1:

(Start: 11 @1 has 43 MA's), (21, 88), (23, 100), (30, 178), (33, 202), (42, 256), (44, 262), (50, 304), (55, 367), (68, 466), (73, 568), (74, 571), (75, 574), (81, 607), (85, 634), (86, 646), (88, 667), (89, 670),

Gene: StinkyVeggy_1 Start: 1, Stop: 807, Start Num: 11

Candidate Starts for StinkyVeggy_1:

(Start: 11 @1 has 43 MA's), (14, 16), (15, 19), (42, 256), (47, 277), (50, 304), (68, 463), (71, 538), (73, 595), (75, 601), (76, 604), (78, 616), (83, 646),

Gene: Suigeneris_1 Start: 1, Stop: 816, Start Num: 11

Candidate Starts for Suigeneris_1:

(Start: 11 @1 has 43 MA's), (14, 16), (15, 19), (30, 178), (42, 256), (47, 277), (50, 304), (54, 358), (68, 463), (71, 538), (73, 595), (76, 604), (83, 646), (95, 739),

Gene: Terij_1 Start: 1, Stop: 645, Start Num: 16

Candidate Starts for Terij_1:

(Start: 16 @1 has 6 MA's), (24, 85), (27, 118), (42, 241), (44, 247), (64, 418), (66, 430), (75, 520), (82, 559), (92, 625),

Gene: Tonitrus_1 Start: 1, Stop: 750, Start Num: 13

Candidate Starts for Tonitrus_1:

(Start: 13 @1 has 1 MA's), (17, 16), (26, 127), (27, 130), (29, 160), (30, 166), (31, 169), (33, 190), (42, 244), (45, 253), (50, 292), (55, 355), (70, 496), (72, 514), (74, 559), (75, 562), (81, 595), (83, 607), (87, 652), (89, 658), (92, 667), (94, 685),

Gene: TurkishDelight_121 Start: 88490, Stop: 89365, Start Num: 11

Candidate Starts for TurkishDelight_121:

(Start: 11 @88490 has 43 MA's), (22, 88601), (35, 88742), (63, 88982), (74, 89162), (78, 89180), (94, 89288),

Gene: VioletZ_1 Start: 1, Stop: 798, Start Num: 11

Candidate Starts for VioletZ_1:

(Start: 11 @1 has 43 MA's), (21, 88), (23, 100), (28, 148), (30, 178), (33, 202), (42, 256), (44, 262), (47, 277), (48, 289), (50, 304), (51, 307), (55, 367), (68, 466), (73, 577), (74, 580), (75, 583), (81, 616), (85, 643), (86, 655), (88, 676), (89, 679),

Gene: Waleliano_1 Start: 1, Stop: 798, Start Num: 11

Candidate Starts for Waleliano_1:

(Start: 11 @1 has 43 MA's), (21, 88), (23, 100), (28, 148), (30, 178), (33, 202), (42, 256), (44, 262), (47, 277), (48, 289), (50, 304), (51, 307), (55, 367), (68, 466), (73, 577), (74, 580), (75, 583), (81, 616), (85, 643), (86, 655), (88, 676), (91, 685),

Gene: Wooper_1 Start: 1, Stop: 804, Start Num: 10

Candidate Starts for Wooper_1:

(Start: 10 @1 has 7 MA's), (Start: 11 @10 has 43 MA's), (25, 151), (30, 193), (33, 217), (34, 223), (47, 292), (50, 319), (51, 322), (77, 619), (88, 703), (89, 706), (100, 775),

Gene: Xincheng_1 Start: 1, Stop: 798, Start Num: 11

Candidate Starts for Xincheng_1:

(Start: 11 @1 has 43 MA's), (21, 88), (23, 100), (24, 109), (28, 148), (30, 178), (33, 202), (42, 256), (44, 262), (47, 277), (48, 289), (51, 307), (55, 367), (68, 466), (73, 577), (74, 580), (75, 583), (81, 616), (85, 643), (86, 655), (88, 676),

Gene: Yeshua_1 Start: 1, Stop: 804, Start Num: 10

Candidate Starts for Yeshua_1:

(Start: 10 @1 has 7 MA's), (Start: 11 @10 has 43 MA's), (25, 151), (30, 193), (33, 217), (34, 223), (47, 292), (50, 319), (51, 322), (89, 706), (100, 775),

Gene: Zemanar_1 Start: 1, Stop: 798, Start Num: 11

Candidate Starts for Zemanar_1:

(Start: 11 @1 has 43 MA's), (21, 88), (23, 100), (24, 109), (28, 148), (30, 178), (33, 202), (42, 256), (44, 262), (47, 277), (48, 289), (51, 307), (55, 367), (68, 466), (73, 577), (74, 580), (75, 583), (77, 592), (81, 616), (85, 643), (86, 655), (88, 676), (89, 679),