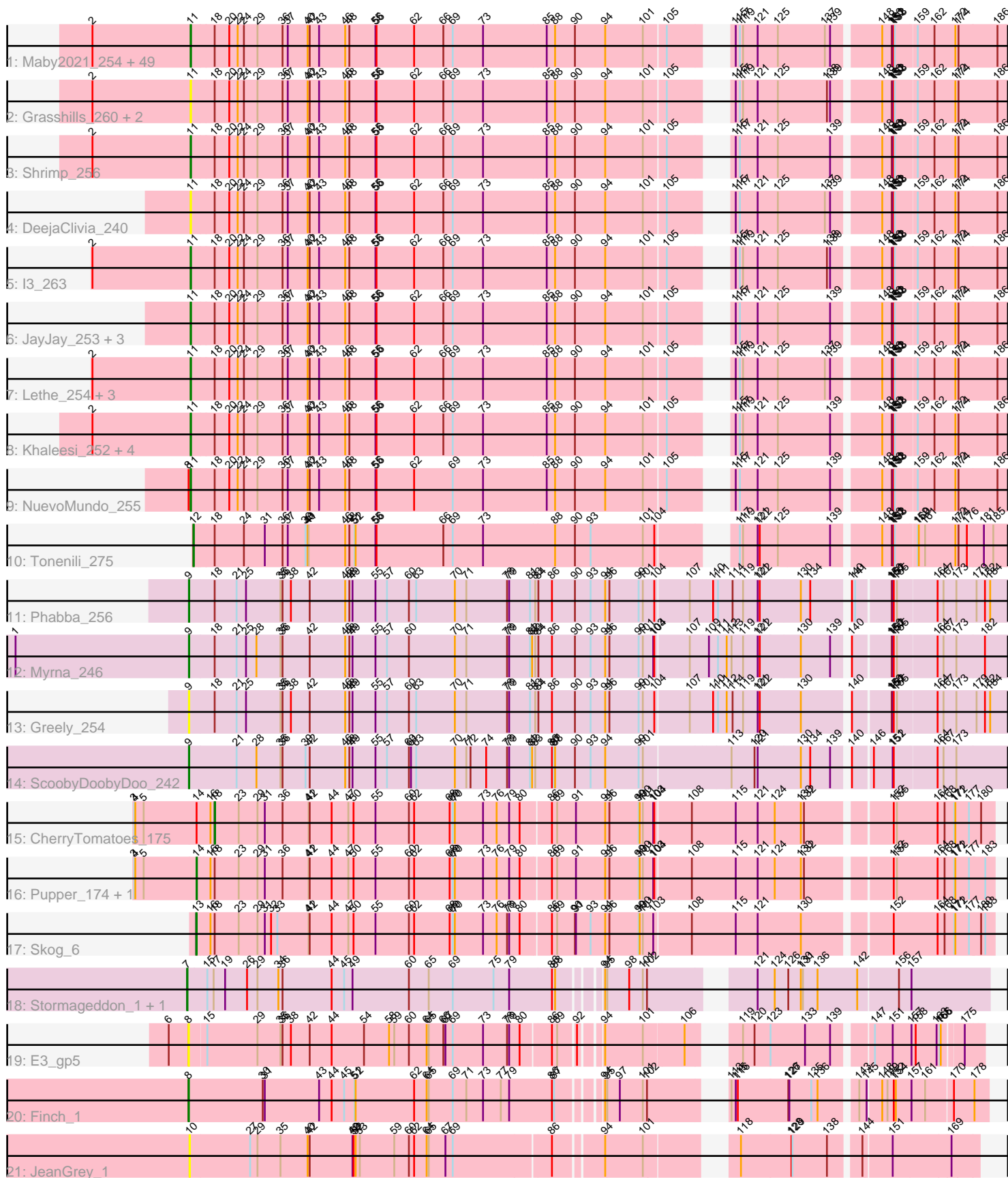


Pham 216082



Note: Tracks are now grouped by subcluster and scaled. Switching in subcluster is indicated by changes in track color. Track scale is now set by default to display the region 30 bp upstream of start 1 to 30 bp downstream of the last possible start. If this default region is judged to be packed too tightly with annotated starts, the track will be further scaled to only show that region of the ORF with annotated starts. This action will be indicated by adding "Zoomed" to the title. For starts, yellow indicates the location of called starts comprised solely of Glimmer/GeneMark auto-annotations, green indicates the location of called starts with at least 1 manual gene annotation.

Pham 216082 Report

This analysis was run 02/22/25 on database version 588.

Pham number 216082 has 84 members, 13 are drafts.

Phages represented in each track:

- Track 1 : Maby2021_254, Nappy_252, Erdmann_255, Fongie_253, Zalkecks_252, Dandelion_259, Zeenon_254, Tyke_250, Megamind_250, Adlitam_253, Gizmo_259, Bread_250, Ewok_252, Demodog_261, Yucca_254, Roots515_256, EmToTheThree_254, FudgeTart_249, NedWong_252, Concombre_259, Salacia_255, SrishMeg2525_251, Bipolarisk_251, Norm_253, Daffodil_259, Phox_254, ShiaLabeouf_251, Bxz1_239, JigglyPuff_259, Tortoise16_251, YemiJoy2021_254, Ava3_250, MikeLiesIn_254, Caravan_243, Shelob_254, Delylah_255, MoMoMixon_249, Loanshark_250, ParkTD_252, DrPhinkDaddy_250, DTDevon_254, Bangla1971_254, Delilah_251, Burrough_254, Shnickers_252, FoxtrotP1_252, Pio_260, Asterius_254, Pleione_257, TinyTim_252
- Track 2 : Grasshills_260, BigCity_261, EggyFarm_261
- Track 3 : Shrimp_256
- Track 4 : DeejaClivia_240
- Track 5 : l3_263
- Track 6 : JayJay_253, HyRo_238, Shifa_229, Sebata_253
- Track 7 : Lethé_254, Bigswolè_258, Guwapp_249, BeanWater_246
- Track 8 : Khaleesi_252, McWolfish_250, PurduePete_254, SVoro_249, Jessibeth14_253
- Track 9 : NuevoMundo_255
- Track 10 : Tonenili_275
- Track 11 : Phabba_256
- Track 12 : Myrna_246
- Track 13 : Greely_254
- Track 14 : ScoobyDoobyDoo_242
- Track 15 : CherryTomatoes_175
- Track 16 : Pupper_174, SCentae_173
- Track 17 : Skog_6
- Track 18 : Stormageddon_1, RedWattleHog_1
- Track 19 : E3_gp5
- Track 20 : Finch_1
- Track 21 : JeanGrey_1

Summary of Final Annotations (See graph section above for start numbers):

The start number called the most often in the published annotations is 11, it was called in 60 of the 71 non-draft genes in the pham.

Genes that call this "Most Annotated" start:

- Adlitam_253, Asterius_254, Ava3_250, Bangla1971_254, BeanWater_246, BigCity_261, Bigswole_258, Bipolarisk_251, Bread_250, Burrough_254, Bxz1_239, Caravan_243, Concombre_259, DTDevon_254, Daffodil_259, Dandelion_259, DeejaClivia_240, Delilah_251, Delylah_255, Demodog_261, DrPhinkDaddy_250, EggyFarm_261, EmToTheThree_254, Erdmann_255, Ewok_252, Fongie_253, FoxtrotP1_252, FudgeTart_249, Gizmo_259, Grasshills_260, Guwapp_249, HyRo_238, I3_263, JayJay_253, Jessibeth14_253, JigglyPuff_259, Khaleesi_252, Lethe_254, Loanshark_250, Maby2021_254, McWolfish_250, Megamind_250, MikeLiesIn_254, MoMoMixon_249, Nappy_252, NedWong_252, Norm_253, NuevoMundo_255, ParkTD_252, Phox_254, Pio_260, Pleione_257, PurduePete_254, Roots515_256, SVoro_249, Salacia_255, Sebata_253, Shelob_254, ShiaLabeouf_251, Shifa_229, Shnickers_252, Shrimp_256, SrishMeg2525_251, TinyTim_252, Tortoise16_251, Tyke_250, YemiJoy2021_254, Yucca_254, Zalkecks_252, Zeenon_254,

Genes that have the "Most Annotated" start but do not call it:

-

Genes that do not have the "Most Annotated" start:

- CherryTomatoes_175, E3_gp5, Finch_1, Greely_254, JeanGrey_1, Myrna_246, Phabba_256, Pupper_174, RedWattleHog_1, SCentae_173, ScoobyDoobyDoo_242, Skog_6, Stormageddon_1, Tonenili_275,

Summary by start number:

Start 7:

- Found in 2 of 84 (2.4%) of genes in pham
- Manual Annotations of this start: 2 of 71
- Called 100.0% of time when present
- Phage (with cluster) where this start called: RedWattleHog_1 (DX), Stormageddon_1 (DX),

Start 8:

- Found in 3 of 84 (3.6%) of genes in pham
- Manual Annotations of this start: 1 of 71
- Called 66.7% of time when present
- Phage (with cluster) where this start called: E3_gp5 (singleton), Finch_1 (singleton),

Start 9:

- Found in 4 of 84 (4.8%) of genes in pham
- Manual Annotations of this start: 3 of 71
- Called 100.0% of time when present
- Phage (with cluster) where this start called: Greely_254 (C2), Myrna_246 (C2), Phabba_256 (C2), ScoobyDoobyDoo_242 (C2),

Start 10:

- Found in 1 of 84 (1.2%) of genes in pham
- No Manual Annotations of this start.
- Called 100.0% of time when present

- Phage (with cluster) where this start called: JeanGrey_1 (singleton),

Start 11:

- Found in 70 of 84 (83.3%) of genes in pham
- Manual Annotations of this start: 60 of 71
- Called 100.0% of time when present
- Phage (with cluster) where this start called: Adlitam_253 (C1), Asterius_254 (C1), Ava3_250 (C1), Bangla1971_254 (C1), BeanWater_246 (C1), BigCity_261 (C1), Bigswole_258 (C1), Bipolarisk_251 (C1), Bread_250 (C1), Burrough_254 (C1), Bxz1_239 (C1), Caravan_243 (C1), Concombre_259 (C1), DTDevon_254 (C1), Daffodil_259 (C1), Dandelion_259 (C1), DeejaClivia_240 (C1), Delilah_251 (C1), Delylah_255 (C1), Demodog_261 (C1), DrPhinkDaddy_250 (C1), EggyFarm_261 (C1), EmToTheThree_254 (C1), Erdmann_255 (C1), Ewok_252 (C1), Fongie_253 (C1), FoxtrotP1_252 (C1), FudgeTart_249 (C1), Gizmo_259 (C1), Grasshills_260 (C1), Guwapp_249 (C1), HyRo_238 (C1), I3_263 (C1), JayJay_253 (C1), Jessibeth14_253 (C1), JigglyPuff_259 (C1), Khaleesi_252 (C1), Lethe_254 (C1), Loanshark_250 (C1), Maby2021_254 (C1), McWolfish_250 (C1), Megamind_250 (C1), MikeLiesIn_254 (C1), MoMoMixon_249 (C1), Nappy_252 (C1), NedWong_252 (C1), Norm_253 (C1), NuevoMundo_255 (C1), ParkTD_252 (C1), Phox_254 (C1), Pio_260 (C1), Pleione_257 (C1), PurduePete_254 (C1), Roots515_256 (C1), SVoro_249 (C1), Salacia_255 (C1), Sebata_253 (C1), Shelob_254 (C1), ShiaLabeouf_251 (C1), Shifa_229 (C1), Shnickers_252 (C1), Shrimp_256 (C1), SrishMeg2525_251 (C1), TinyTim_252 (C1), Tortoise16_251 (C1), Tyke_250 (C1), YemiJoy2021_254 (C1), Yucca_254 (C1), Zalkecks_252 (C1), Zeenon_254 (C1),

Start 12:

- Found in 1 of 84 (1.2%) of genes in pham
- Manual Annotations of this start: 1 of 71
- Called 100.0% of time when present
- Phage (with cluster) where this start called: Tonenili_275 (C1),

Start 13:

- Found in 1 of 84 (1.2%) of genes in pham
- Manual Annotations of this start: 1 of 71
- Called 100.0% of time when present
- Phage (with cluster) where this start called: Skog_6 (DO),

Start 14:

- Found in 3 of 84 (3.6%) of genes in pham
- Manual Annotations of this start: 2 of 71
- Called 66.7% of time when present
- Phage (with cluster) where this start called: Pupper_174 (DO), SCentae_173 (DO),

Start 18:

- Found in 78 of 84 (92.9%) of genes in pham
- Manual Annotations of this start: 1 of 71
- Called 1.3% of time when present
- Phage (with cluster) where this start called: CherryTomatoes_175 (DO),

Summary by clusters:

There are 5 clusters represented in this pham: DO, C1, singleton, DX, C2,

Info for manual annotations of cluster C1:

- Start number 11 was manually annotated 60 times for cluster C1.
- Start number 12 was manually annotated 1 time for cluster C1.

Info for manual annotations of cluster C2:

- Start number 9 was manually annotated 3 times for cluster C2.

Info for manual annotations of cluster DO:

- Start number 13 was manually annotated 1 time for cluster DO.
- Start number 14 was manually annotated 2 times for cluster DO.
- Start number 18 was manually annotated 1 time for cluster DO.

Info for manual annotations of cluster DX:

- Start number 7 was manually annotated 2 times for cluster DX.

Gene Information:

Gene: Adlitam_253 Start: 145825, Stop: 148041, Start Num: 11

Candidate Starts for Adlitam_253:

(2, 145543), (Start: 11 @145825 has 60 MA's), (Start: 18 @145891 has 1 MA's), (20, 145933), (22, 145957), (24, 145975), (29, 146014), (36, 146086), (37, 146101), (40, 146158), (42, 146164), (43, 146191), (46, 146266), (48, 146278), (55, 146353), (56, 146356), (62, 146464), (66, 146548), (69, 146575), (73, 146662), (85, 146836), (88, 146860), (90, 146917), (94, 147004), (101, 147112), (105, 147172), (115, 147283), (117, 147295), (119, 147304), (121, 147346), (125, 147403), (137, 147535), (139, 147550), (148, 147673), (150, 147700), (151, 147703), (152, 147706), (153, 147709), (159, 147766), (162, 147814), (172, 147874), (174, 147883), (186, 147994),

Gene: Asterius_254 Start: 145682, Stop: 147898, Start Num: 11

Candidate Starts for Asterius_254:

(2, 145400), (Start: 11 @145682 has 60 MA's), (Start: 18 @145748 has 1 MA's), (20, 145790), (22, 145814), (24, 145832), (29, 145871), (36, 145943), (37, 145958), (40, 146015), (42, 146021), (43, 146048), (46, 146123), (48, 146135), (55, 146210), (56, 146213), (62, 146321), (66, 146405), (69, 146432), (73, 146519), (85, 146693), (88, 146717), (90, 146774), (94, 146861), (101, 146969), (105, 147029), (115, 147140), (117, 147152), (119, 147161), (121, 147203), (125, 147260), (137, 147392), (139, 147407), (148, 147530), (150, 147557), (151, 147560), (152, 147563), (153, 147566), (159, 147623), (162, 147671), (172, 147731), (174, 147740), (186, 147851),

Gene: Ava3_250 Start: 145284, Stop: 147500, Start Num: 11

Candidate Starts for Ava3_250:

(2, 145002), (Start: 11 @145284 has 60 MA's), (Start: 18 @145350 has 1 MA's), (20, 145392), (22, 145416), (24, 145434), (29, 145473), (36, 145545), (37, 145560), (40, 145617), (42, 145623), (43, 145650), (46, 145725), (48, 145737), (55, 145812), (56, 145815), (62, 145923), (66, 146007), (69, 146034), (73, 146121), (85, 146295), (88, 146319), (90, 146376), (94, 146463), (101, 146571), (105, 146631), (115, 146742), (117, 146754), (119, 146763), (121, 146805), (125, 146862), (137, 146994), (139, 147009), (148, 147132), (150, 147159), (151, 147162), (152, 147165), (153, 147168), (159, 147225), (162, 147273), (172, 147333), (174, 147342), (186, 147453),

Gene: Bangla1971_254 Start: 145533, Stop: 147749, Start Num: 11

Candidate Starts for Bangla1971_254:

(2, 145251), (Start: 11 @145533 has 60 MA's), (Start: 18 @145599 has 1 MA's), (20, 145641), (22, 145665), (24, 145683), (29, 145722), (36, 145794), (37, 145809), (40, 145866), (42, 145872), (43,

145899), (46, 145974), (48, 145986), (55, 146061), (56, 146064), (62, 146172), (66, 146256), (69, 146283), (73, 146370), (85, 146544), (88, 146568), (90, 146625), (94, 146712), (101, 146820), (105, 146880), (115, 146991), (117, 147003), (119, 147012), (121, 147054), (125, 147111), (137, 147243), (139, 147258), (148, 147381), (150, 147408), (151, 147411), (152, 147414), (153, 147417), (159, 147474), (162, 147522), (172, 147582), (174, 147591), (186, 147702),

Gene: BeanWater_246 Start: 144669, Stop: 146885, Start Num: 11

Candidate Starts for BeanWater_246:

(2, 144387), (Start: 11 @144669 has 60 MA's), (Start: 18 @144735 has 1 MA's), (20, 144777), (22, 144801), (24, 144819), (29, 144858), (36, 144930), (37, 144945), (40, 145002), (42, 145008), (43, 145035), (46, 145110), (48, 145122), (55, 145197), (56, 145200), (62, 145308), (66, 145392), (69, 145419), (73, 145506), (85, 145680), (88, 145704), (90, 145761), (94, 145848), (101, 145956), (105, 146016), (115, 146127), (117, 146139), (119, 146148), (121, 146190), (125, 146247), (137, 146379), (139, 146394), (148, 146517), (150, 146544), (151, 146547), (152, 146550), (153, 146553), (159, 146610), (162, 146658), (172, 146718), (174, 146727), (186, 146838),

Gene: BigCity_261 Start: 147424, Stop: 149640, Start Num: 11

Candidate Starts for BigCity_261:

(2, 147142), (Start: 11 @147424 has 60 MA's), (Start: 18 @147490 has 1 MA's), (20, 147532), (22, 147556), (24, 147574), (29, 147613), (36, 147685), (37, 147700), (40, 147757), (42, 147763), (43, 147790), (46, 147865), (48, 147877), (55, 147952), (56, 147955), (62, 148063), (66, 148147), (69, 148174), (73, 148261), (85, 148435), (88, 148459), (90, 148516), (94, 148603), (101, 148711), (105, 148771), (115, 148882), (117, 148894), (119, 148903), (121, 148945), (125, 149002), (138, 149140), (139, 149149), (148, 149272), (150, 149299), (151, 149302), (152, 149305), (153, 149308), (159, 149365), (162, 149413), (172, 149473), (174, 149482), (186, 149593),

Gene: Bigswole_258 Start: 147335, Stop: 149551, Start Num: 11

Candidate Starts for Bigswole_258:

(2, 147053), (Start: 11 @147335 has 60 MA's), (Start: 18 @147401 has 1 MA's), (20, 147443), (22, 147467), (24, 147485), (29, 147524), (36, 147596), (37, 147611), (40, 147668), (42, 147674), (43, 147701), (46, 147776), (48, 147788), (55, 147863), (56, 147866), (62, 147974), (66, 148058), (69, 148085), (73, 148172), (85, 148346), (88, 148370), (90, 148427), (94, 148514), (101, 148622), (105, 148682), (115, 148793), (117, 148805), (119, 148814), (121, 148856), (125, 148913), (137, 149045), (139, 149060), (148, 149183), (150, 149210), (151, 149213), (152, 149216), (153, 149219), (159, 149276), (162, 149324), (172, 149384), (174, 149393), (186, 149504),

Gene: Bipolarisk_251 Start: 145552, Stop: 147768, Start Num: 11

Candidate Starts for Bipolarisk_251:

(2, 145270), (Start: 11 @145552 has 60 MA's), (Start: 18 @145618 has 1 MA's), (20, 145660), (22, 145684), (24, 145702), (29, 145741), (36, 145813), (37, 145828), (40, 145885), (42, 145891), (43, 145918), (46, 145993), (48, 146005), (55, 146080), (56, 146083), (62, 146191), (66, 146275), (69, 146302), (73, 146389), (85, 146563), (88, 146587), (90, 146644), (94, 146731), (101, 146839), (105, 146899), (115, 147010), (117, 147022), (119, 147031), (121, 147073), (125, 147130), (137, 147262), (139, 147277), (148, 147400), (150, 147427), (151, 147430), (152, 147433), (153, 147436), (159, 147493), (162, 147541), (172, 147601), (174, 147610), (186, 147721),

Gene: Bread_250 Start: 145336, Stop: 147552, Start Num: 11

Candidate Starts for Bread_250:

(2, 145054), (Start: 11 @145336 has 60 MA's), (Start: 18 @145402 has 1 MA's), (20, 145444), (22, 145468), (24, 145486), (29, 145525), (36, 145597), (37, 145612), (40, 145669), (42, 145675), (43, 145702), (46, 145777), (48, 145789), (55, 145864), (56, 145867), (62, 145975), (66, 146059), (69, 146086), (73, 146173), (85, 146347), (88, 146371), (90, 146428), (94, 146515), (101, 146623), (105, 146683), (115, 146794), (117, 146806), (119, 146815), (121, 146857), (125, 146914), (137, 147046),

(139, 147061), (148, 147184), (150, 147211), (151, 147214), (152, 147217), (153, 147220), (159, 147277), (162, 147325), (172, 147385), (174, 147394), (186, 147505),

Gene: Burrough_254 Start: 146697, Stop: 148913, Start Num: 11

Candidate Starts for Burrough_254:

(2, 146415), (Start: 11 @146697 has 60 MA's), (Start: 18 @146763 has 1 MA's), (20, 146805), (22, 146829), (24, 146847), (29, 146886), (36, 146958), (37, 146973), (40, 147030), (42, 147036), (43, 147063), (46, 147138), (48, 147150), (55, 147225), (56, 147228), (62, 147336), (66, 147420), (69, 147447), (73, 147534), (85, 147708), (88, 147732), (90, 147789), (94, 147876), (101, 147984), (105, 148044), (115, 148155), (117, 148167), (119, 148176), (121, 148218), (125, 148275), (137, 148407), (139, 148422), (148, 148545), (150, 148572), (151, 148575), (152, 148578), (153, 148581), (159, 148638), (162, 148686), (172, 148746), (174, 148755), (186, 148866),

Gene: Bxz1_239 Start: 146901, Stop: 149117, Start Num: 11

Candidate Starts for Bxz1_239:

(2, 146619), (Start: 11 @146901 has 60 MA's), (Start: 18 @146967 has 1 MA's), (20, 147009), (22, 147033), (24, 147051), (29, 147090), (36, 147162), (37, 147177), (40, 147234), (42, 147240), (43, 147267), (46, 147342), (48, 147354), (55, 147429), (56, 147432), (62, 147540), (66, 147624), (69, 147651), (73, 147738), (85, 147912), (88, 147936), (90, 147993), (94, 148080), (101, 148188), (105, 148248), (115, 148359), (117, 148371), (119, 148380), (121, 148422), (125, 148479), (137, 148611), (139, 148626), (148, 148749), (150, 148776), (151, 148779), (152, 148782), (153, 148785), (159, 148842), (162, 148890), (172, 148950), (174, 148959), (186, 149070),

Gene: Caravan_243 Start: 145598, Stop: 147814, Start Num: 11

Candidate Starts for Caravan_243:

(2, 145316), (Start: 11 @145598 has 60 MA's), (Start: 18 @145664 has 1 MA's), (20, 145706), (22, 145730), (24, 145748), (29, 145787), (36, 145859), (37, 145874), (40, 145931), (42, 145937), (43, 145964), (46, 146039), (48, 146051), (55, 146126), (56, 146129), (62, 146237), (66, 146321), (69, 146348), (73, 146435), (85, 146609), (88, 146633), (90, 146690), (94, 146777), (101, 146885), (105, 146945), (115, 147056), (117, 147068), (119, 147077), (121, 147119), (125, 147176), (137, 147308), (139, 147323), (148, 147446), (150, 147473), (151, 147476), (152, 147479), (153, 147482), (159, 147539), (162, 147587), (172, 147647), (174, 147656), (186, 147767),

Gene: CherryTomatoes_175 Start: 126776, Stop: 128935, Start Num: 18

Candidate Starts for CherryTomatoes_175:

(3, 126554), (4, 126557), (5, 126581), (Start: 14 @126731 has 2 MA's), (16, 126767), (Start: 18 @126776 has 1 MA's), (23, 126845), (29, 126899), (31, 126920), (36, 126971), (41, 127046), (42, 127049), (44, 127112), (47, 127160), (50, 127175), (55, 127238), (60, 127334), (62, 127349), (68, 127451), (69, 127460), (70, 127466), (73, 127547), (76, 127586), (79, 127622), (80, 127652), (86, 127733), (89, 127748), (91, 127802), (94, 127886), (96, 127895), (99, 127979), (100, 127982), (101, 127991), (103, 128021), (104, 128024), (108, 128123), (115, 128246), (121, 128309), (124, 128357), (130, 128432), (132, 128441), (152, 128660), (155, 128669), (164, 128780), (168, 128798), (171, 128822), (172, 128825), (177, 128864), (180, 128897),

Gene: Concombre_259 Start: 147531, Stop: 149747, Start Num: 11

Candidate Starts for Concombre_259:

(2, 147249), (Start: 11 @147531 has 60 MA's), (Start: 18 @147597 has 1 MA's), (20, 147639), (22, 147663), (24, 147681), (29, 147720), (36, 147792), (37, 147807), (40, 147864), (42, 147870), (43, 147897), (46, 147972), (48, 147984), (55, 148059), (56, 148062), (62, 148170), (66, 148254), (69, 148281), (73, 148368), (85, 148542), (88, 148566), (90, 148623), (94, 148710), (101, 148818), (105, 148878), (115, 148989), (117, 149001), (119, 149010), (121, 149052), (125, 149109), (137, 149241), (139, 149256), (148, 149379), (150, 149406), (151, 149409), (152, 149412), (153, 149415), (159, 149472), (162, 149520), (172, 149580), (174, 149589), (186, 149700),

Gene: DTDevon_254 Start: 147565, Stop: 149781, Start Num: 11

Candidate Starts for DTDevon_254:

(2, 147283), (Start: 11 @147565 has 60 MA's), (Start: 18 @147631 has 1 MA's), (20, 147673), (22, 147697), (24, 147715), (29, 147754), (36, 147826), (37, 147841), (40, 147898), (42, 147904), (43, 147931), (46, 148006), (48, 148018), (55, 148093), (56, 148096), (62, 148204), (66, 148288), (69, 148315), (73, 148402), (85, 148576), (88, 148600), (90, 148657), (94, 148744), (101, 148852), (105, 148912), (115, 149023), (117, 149035), (119, 149044), (121, 149086), (125, 149143), (137, 149275), (139, 149290), (148, 149413), (150, 149440), (151, 149443), (152, 149446), (153, 149449), (159, 149506), (162, 149554), (172, 149614), (174, 149623), (186, 149734),

Gene: Daffodil_259 Start: 145852, Stop: 148068, Start Num: 11

Candidate Starts for Daffodil_259:

(2, 145570), (Start: 11 @145852 has 60 MA's), (Start: 18 @145918 has 1 MA's), (20, 145960), (22, 145984), (24, 146002), (29, 146041), (36, 146113), (37, 146128), (40, 146185), (42, 146191), (43, 146218), (46, 146293), (48, 146305), (55, 146380), (56, 146383), (62, 146491), (66, 146575), (69, 146602), (73, 146689), (85, 146863), (88, 146887), (90, 146944), (94, 147031), (101, 147139), (105, 147199), (115, 147310), (117, 147322), (119, 147331), (121, 147373), (125, 147430), (137, 147562), (139, 147577), (148, 147700), (150, 147727), (151, 147730), (152, 147733), (153, 147736), (159, 147793), (162, 147841), (172, 147901), (174, 147910), (186, 148021),

Gene: Dandelion_259 Start: 148386, Stop: 150602, Start Num: 11

Candidate Starts for Dandelion_259:

(2, 148104), (Start: 11 @148386 has 60 MA's), (Start: 18 @148452 has 1 MA's), (20, 148494), (22, 148518), (24, 148536), (29, 148575), (36, 148647), (37, 148662), (40, 148719), (42, 148725), (43, 148752), (46, 148827), (48, 148839), (55, 148914), (56, 148917), (62, 149025), (66, 149109), (69, 149136), (73, 149223), (85, 149397), (88, 149421), (90, 149478), (94, 149565), (101, 149673), (105, 149733), (115, 149844), (117, 149856), (119, 149865), (121, 149907), (125, 149964), (137, 150096), (139, 150111), (148, 150234), (150, 150261), (151, 150264), (152, 150267), (153, 150270), (159, 150327), (162, 150375), (172, 150435), (174, 150444), (186, 150555),

Gene: DeejaClivia_240 Start: 143253, Stop: 145469, Start Num: 11

Candidate Starts for DeejaClivia_240:

(Start: 11 @143253 has 60 MA's), (Start: 18 @143319 has 1 MA's), (20, 143361), (22, 143385), (24, 143403), (29, 143442), (36, 143514), (37, 143529), (40, 143586), (42, 143592), (43, 143619), (46, 143694), (48, 143706), (55, 143781), (56, 143784), (62, 143892), (66, 143976), (69, 144003), (73, 144090), (85, 144264), (88, 144288), (90, 144345), (94, 144432), (101, 144540), (105, 144600), (115, 144711), (117, 144723), (121, 144774), (125, 144831), (137, 144963), (139, 144978), (148, 145101), (150, 145128), (151, 145131), (152, 145134), (153, 145137), (159, 145194), (162, 145242), (172, 145302), (174, 145311), (186, 145422),

Gene: Delilah_251 Start: 145945, Stop: 148161, Start Num: 11

Candidate Starts for Delilah_251:

(2, 145663), (Start: 11 @145945 has 60 MA's), (Start: 18 @146011 has 1 MA's), (20, 146053), (22, 146077), (24, 146095), (29, 146134), (36, 146206), (37, 146221), (40, 146278), (42, 146284), (43, 146311), (46, 146386), (48, 146398), (55, 146473), (56, 146476), (62, 146584), (66, 146668), (69, 146695), (73, 146782), (85, 146956), (88, 146980), (90, 147037), (94, 147124), (101, 147232), (105, 147292), (115, 147403), (117, 147415), (119, 147424), (121, 147466), (125, 147523), (137, 147655), (139, 147670), (148, 147793), (150, 147820), (151, 147823), (152, 147826), (153, 147829), (159, 147886), (162, 147934), (172, 147994), (174, 148003), (186, 148114),

Gene: Delylah_255 Start: 146222, Stop: 148438, Start Num: 11

Candidate Starts for Delylah_255:

(2, 145940), (Start: 11 @146222 has 60 MA's), (Start: 18 @146288 has 1 MA's), (20, 146330), (22, 146354), (24, 146372), (29, 146411), (36, 146483), (37, 146498), (40, 146555), (42, 146561), (43, 146588), (46, 146663), (48, 146675), (55, 146750), (56, 146753), (62, 146861), (66, 146945), (69, 146972), (73, 147059), (85, 147233), (88, 147257), (90, 147314), (94, 147401), (101, 147509), (105, 147569), (115, 147680), (117, 147692), (119, 147701), (121, 147743), (125, 147800), (137, 147932), (139, 147947), (148, 148070), (150, 148097), (151, 148100), (152, 148103), (153, 148106), (159, 148163), (162, 148211), (172, 148271), (174, 148280), (186, 148391),

Gene: Demodog_261 Start: 147541, Stop: 149757, Start Num: 11

Candidate Starts for Demodog_261:

(2, 147259), (Start: 11 @147541 has 60 MA's), (Start: 18 @147607 has 1 MA's), (20, 147649), (22, 147673), (24, 147691), (29, 147730), (36, 147802), (37, 147817), (40, 147874), (42, 147880), (43, 147907), (46, 147982), (48, 147994), (55, 148069), (56, 148072), (62, 148180), (66, 148264), (69, 148291), (73, 148378), (85, 148552), (88, 148576), (90, 148633), (94, 148720), (101, 148828), (105, 148888), (115, 148999), (117, 149011), (119, 149020), (121, 149062), (125, 149119), (137, 149251), (139, 149266), (148, 149389), (150, 149416), (151, 149419), (152, 149422), (153, 149425), (159, 149482), (162, 149530), (172, 149590), (174, 149599), (186, 149710),

Gene: DrPhinkDaddy_250 Start: 146630, Stop: 148846, Start Num: 11

Candidate Starts for DrPhinkDaddy_250:

(2, 146348), (Start: 11 @146630 has 60 MA's), (Start: 18 @146696 has 1 MA's), (20, 146738), (22, 146762), (24, 146780), (29, 146819), (36, 146891), (37, 146906), (40, 146963), (42, 146969), (43, 146996), (46, 147071), (48, 147083), (55, 147158), (56, 147161), (62, 147269), (66, 147353), (69, 147380), (73, 147467), (85, 147641), (88, 147665), (90, 147722), (94, 147809), (101, 147917), (105, 147977), (115, 148088), (117, 148100), (119, 148109), (121, 148151), (125, 148208), (137, 148340), (139, 148355), (148, 148478), (150, 148505), (151, 148508), (152, 148511), (153, 148514), (159, 148571), (162, 148619), (172, 148679), (174, 148688), (186, 148799),

Gene: E3_gp5 Start: 1661, Stop: 3724, Start Num: 8

Candidate Starts for E3_gp5:

(6, 1604), (Start: 8 @1661 has 1 MA's), (15, 1709), (29, 1853), (35, 1919), (36, 1925), (38, 1949), (42, 2003), (44, 2066), (54, 2159), (58, 2231), (59, 2246), (60, 2288), (64, 2339), (65, 2345), (66, 2387), (67, 2393), (69, 2414), (73, 2501), (78, 2570), (79, 2576), (80, 2603), (86, 2684), (89, 2699), (92, 2744), (94, 2792), (101, 2897), (106, 3008), (119, 3089), (120, 3122), (123, 3167), (133, 3266), (139, 3338), (147, 3428), (151, 3479), (157, 3533), (158, 3545), (163, 3605), (165, 3614), (166, 3617), (175, 3671),

Gene: EggyFarm_261 Start: 147425, Stop: 149641, Start Num: 11

Candidate Starts for EggyFarm_261:

(2, 147143), (Start: 11 @147425 has 60 MA's), (Start: 18 @147491 has 1 MA's), (20, 147533), (22, 147557), (24, 147575), (29, 147614), (36, 147686), (37, 147701), (40, 147758), (42, 147764), (43, 147791), (46, 147866), (48, 147878), (55, 147953), (56, 147956), (62, 148064), (66, 148148), (69, 148175), (73, 148262), (85, 148436), (88, 148460), (90, 148517), (94, 148604), (101, 148712), (105, 148772), (115, 148883), (117, 148895), (119, 148904), (121, 148946), (125, 149003), (138, 149141), (139, 149150), (148, 149273), (150, 149300), (151, 149303), (152, 149306), (153, 149309), (159, 149366), (162, 149414), (172, 149474), (174, 149483), (186, 149594),

Gene: EmToTheThree_254 Start: 146418, Stop: 148634, Start Num: 11

Candidate Starts for EmToTheThree_254:

(2, 146136), (Start: 11 @146418 has 60 MA's), (Start: 18 @146484 has 1 MA's), (20, 146526), (22, 146550), (24, 146568), (29, 146607), (36, 146679), (37, 146694), (40, 146751), (42, 146757), (43, 146784), (46, 146859), (48, 146871), (55, 146946), (56, 146949), (62, 147057), (66, 147141), (69, 147168), (73, 147255), (85, 147429), (88, 147453), (90, 147510), (94, 147597), (101, 147705), (105, 147765), (115, 147876), (117, 147888), (119, 147897), (121, 147939), (125, 147996), (137, 148128),

(139, 148143), (148, 148266), (150, 148293), (151, 148296), (152, 148299), (153, 148302), (159, 148359), (162, 148407), (172, 148467), (174, 148476), (186, 148587),

Gene: Erdmann_255 Start: 146386, Stop: 148602, Start Num: 11

Candidate Starts for Erdmann_255:

(2, 146104), (Start: 11 @146386 has 60 MA's), (Start: 18 @146452 has 1 MA's), (20, 146494), (22, 146518), (24, 146536), (29, 146575), (36, 146647), (37, 146662), (40, 146719), (42, 146725), (43, 146752), (46, 146827), (48, 146839), (55, 146914), (56, 146917), (62, 147025), (66, 147109), (69, 147136), (73, 147223), (85, 147397), (88, 147421), (90, 147478), (94, 147565), (101, 147673), (105, 147733), (115, 147844), (117, 147856), (119, 147865), (121, 147907), (125, 147964), (137, 148096), (139, 148111), (148, 148234), (150, 148261), (151, 148264), (152, 148267), (153, 148270), (159, 148327), (162, 148375), (172, 148435), (174, 148444), (186, 148555),

Gene: Ewok_252 Start: 145880, Stop: 148096, Start Num: 11

Candidate Starts for Ewok_252:

(2, 145598), (Start: 11 @145880 has 60 MA's), (Start: 18 @145946 has 1 MA's), (20, 145988), (22, 146012), (24, 146030), (29, 146069), (36, 146141), (37, 146156), (40, 146213), (42, 146219), (43, 146246), (46, 146321), (48, 146333), (55, 146408), (56, 146411), (62, 146519), (66, 146603), (69, 146630), (73, 146717), (85, 146891), (88, 146915), (90, 146972), (94, 147059), (101, 147167), (105, 147227), (115, 147338), (117, 147350), (119, 147359), (121, 147401), (125, 147458), (137, 147590), (139, 147605), (148, 147728), (150, 147755), (151, 147758), (152, 147761), (153, 147764), (159, 147821), (162, 147869), (172, 147929), (174, 147938), (186, 148049),

Gene: Finch_1 Start: 1, Stop: 2109, Start Num: 8

Candidate Starts for Finch_1:

(Start: 8 @1 has 1 MA's), (30, 214), (31, 220), (43, 376), (44, 412), (45, 448), (51, 478), (52, 481), (62, 649), (64, 685), (65, 691), (69, 760), (71, 799), (73, 847), (77, 898), (79, 922), (86, 1042), (87, 1048), (94, 1150), (95, 1153), (97, 1189), (101, 1255), (102, 1267), (113, 1423), (115, 1435), (116, 1441), (126, 1585), (127, 1588), (135, 1651), (136, 1669), (143, 1762), (145, 1780), (148, 1816), (149, 1831), (152, 1849), (154, 1855), (157, 1900), (161, 1939), (170, 2014), (178, 2071),

Gene: Fongie_253 Start: 145878, Stop: 148094, Start Num: 11

Candidate Starts for Fongie_253:

(2, 145596), (Start: 11 @145878 has 60 MA's), (Start: 18 @145944 has 1 MA's), (20, 145986), (22, 146010), (24, 146028), (29, 146067), (36, 146139), (37, 146154), (40, 146211), (42, 146217), (43, 146244), (46, 146319), (48, 146331), (55, 146406), (56, 146409), (62, 146517), (66, 146601), (69, 146628), (73, 146715), (85, 146889), (88, 146913), (90, 146970), (94, 147057), (101, 147165), (105, 147225), (115, 147336), (117, 147348), (119, 147357), (121, 147399), (125, 147456), (137, 147588), (139, 147603), (148, 147726), (150, 147753), (151, 147756), (152, 147759), (153, 147762), (159, 147819), (162, 147867), (172, 147927), (174, 147936), (186, 148047),

Gene: FoxtrotP1_252 Start: 146972, Stop: 149188, Start Num: 11

Candidate Starts for FoxtrotP1_252:

(2, 146690), (Start: 11 @146972 has 60 MA's), (Start: 18 @147038 has 1 MA's), (20, 147080), (22, 147104), (24, 147122), (29, 147161), (36, 147233), (37, 147248), (40, 147305), (42, 147311), (43, 147338), (46, 147413), (48, 147425), (55, 147500), (56, 147503), (62, 147611), (66, 147695), (69, 147722), (73, 147809), (85, 147983), (88, 148007), (90, 148064), (94, 148151), (101, 148259), (105, 148319), (115, 148430), (117, 148442), (119, 148451), (121, 148493), (125, 148550), (137, 148682), (139, 148697), (148, 148820), (150, 148847), (151, 148850), (152, 148853), (153, 148856), (159, 148913), (162, 148961), (172, 149021), (174, 149030), (186, 149141),

Gene: FudgeTart_249 Start: 145476, Stop: 147692, Start Num: 11

Candidate Starts for FudgeTart_249:

(2, 145194), (Start: 11 @145476 has 60 MA's), (Start: 18 @145542 has 1 MA's), (20, 145584), (22, 145608), (24, 145626), (29, 145665), (36, 145737), (37, 145752), (40, 145809), (42, 145815), (43, 145842), (46, 145917), (48, 145929), (55, 146004), (56, 146007), (62, 146115), (66, 146199), (69, 146226), (73, 146313), (85, 146487), (88, 146511), (90, 146568), (94, 146655), (101, 146763), (105, 146823), (115, 146934), (117, 146946), (119, 146955), (121, 146997), (125, 147054), (137, 147186), (139, 147201), (148, 147324), (150, 147351), (151, 147354), (152, 147357), (153, 147360), (159, 147417), (162, 147465), (172, 147525), (174, 147534), (186, 147645),

Gene: Gizmo_259 Start: 148303, Stop: 150519, Start Num: 11

Candidate Starts for Gizmo_259:

(2, 148021), (Start: 11 @148303 has 60 MA's), (Start: 18 @148369 has 1 MA's), (20, 148411), (22, 148435), (24, 148453), (29, 148492), (36, 148564), (37, 148579), (40, 148636), (42, 148642), (43, 148669), (46, 148744), (48, 148756), (55, 148831), (56, 148834), (62, 148942), (66, 149026), (69, 149053), (73, 149140), (85, 149314), (88, 149338), (90, 149395), (94, 149482), (101, 149590), (105, 149650), (115, 149761), (117, 149773), (119, 149782), (121, 149824), (125, 149881), (137, 150013), (139, 150028), (148, 150151), (150, 150178), (151, 150181), (152, 150184), (153, 150187), (159, 150244), (162, 150292), (172, 150352), (174, 150361), (186, 150472),

Gene: Grasshills_260 Start: 147424, Stop: 149640, Start Num: 11

Candidate Starts for Grasshills_260:

(2, 147142), (Start: 11 @147424 has 60 MA's), (Start: 18 @147490 has 1 MA's), (20, 147532), (22, 147556), (24, 147574), (29, 147613), (36, 147685), (37, 147700), (40, 147757), (42, 147763), (43, 147790), (46, 147865), (48, 147877), (55, 147952), (56, 147955), (62, 148063), (66, 148147), (69, 148174), (73, 148261), (85, 148435), (88, 148459), (90, 148516), (94, 148603), (101, 148711), (105, 148771), (115, 148882), (117, 148894), (119, 148903), (121, 148945), (125, 149002), (138, 149140), (139, 149149), (148, 149272), (150, 149299), (151, 149302), (152, 149305), (153, 149308), (159, 149365), (162, 149413), (172, 149473), (174, 149482), (186, 149593),

Gene: Greely_254 Start: 148790, Stop: 151084, Start Num: 9

Candidate Starts for Greely_254:

(Start: 9 @148790 has 3 MA's), (Start: 18 @148862 has 1 MA's), (21, 148925), (25, 148952), (35, 149051), (36, 149057), (38, 149081), (42, 149135), (46, 149237), (48, 149249), (49, 149258), (55, 149324), (57, 149357), (60, 149420), (63, 149441), (70, 149552), (71, 149585), (78, 149702), (79, 149708), (81, 149768), (83, 149780), (84, 149789), (86, 149828), (90, 149894), (93, 149939), (94, 149981), (96, 149990), (99, 150074), (101, 150086), (104, 150119), (107, 150212), (110, 150269), (111, 150281), (112, 150305), (114, 150320), (119, 150350), (121, 150392), (122, 150398), (130, 150512), (140, 150632), (150, 150734), (151, 150737), (152, 150740), (155, 150749), (164, 150857), (167, 150872), (173, 150908), (179, 150965), (182, 150989), (184, 151004),

Gene: Guwapp_249 Start: 144272, Stop: 146488, Start Num: 11

Candidate Starts for Guwapp_249:

(2, 143990), (Start: 11 @144272 has 60 MA's), (Start: 18 @144338 has 1 MA's), (20, 144380), (22, 144404), (24, 144422), (29, 144461), (36, 144533), (37, 144548), (40, 144605), (42, 144611), (43, 144638), (46, 144713), (48, 144725), (55, 144800), (56, 144803), (62, 144911), (66, 144995), (69, 145022), (73, 145109), (85, 145283), (88, 145307), (90, 145364), (94, 145451), (101, 145559), (105, 145619), (115, 145730), (117, 145742), (119, 145751), (121, 145793), (125, 145850), (137, 145982), (139, 145997), (148, 146120), (150, 146147), (151, 146150), (152, 146153), (153, 146156), (159, 146213), (162, 146261), (172, 146321), (174, 146330), (186, 146441),

Gene: HyRo_238 Start: 144789, Stop: 147005, Start Num: 11

Candidate Starts for HyRo_238:

(Start: 11 @144789 has 60 MA's), (Start: 18 @144855 has 1 MA's), (20, 144897), (22, 144921), (24, 144939), (29, 144978), (36, 145050), (37, 145065), (40, 145122), (42, 145128), (43, 145155), (46,

145230), (48, 145242), (55, 145317), (56, 145320), (62, 145428), (66, 145512), (69, 145539), (73, 145626), (85, 145800), (88, 145824), (90, 145881), (94, 145968), (101, 146076), (105, 146136), (115, 146247), (117, 146259), (121, 146310), (125, 146367), (139, 146514), (148, 146637), (150, 146664), (151, 146667), (152, 146670), (153, 146673), (159, 146730), (162, 146778), (172, 146838), (174, 146847), (186, 146958),

Gene: I3_263 Start: 146580, Stop: 148796, Start Num: 11

Candidate Starts for I3_263:

(2, 146298), (Start: 11 @146580 has 60 MA's), (Start: 18 @146646 has 1 MA's), (20, 146688), (22, 146712), (24, 146730), (29, 146769), (36, 146841), (37, 146856), (40, 146913), (42, 146919), (43, 146946), (46, 147021), (48, 147033), (55, 147108), (56, 147111), (62, 147219), (66, 147303), (69, 147330), (73, 147417), (85, 147591), (88, 147615), (90, 147672), (94, 147759), (101, 147867), (105, 147927), (115, 148038), (117, 148050), (119, 148059), (121, 148101), (125, 148158), (138, 148296), (139, 148305), (148, 148428), (150, 148455), (151, 148458), (152, 148461), (153, 148464), (159, 148521), (162, 148569), (172, 148629), (174, 148638), (186, 148749),

Gene: JayJay_253 Start: 144961, Stop: 147177, Start Num: 11

Candidate Starts for JayJay_253:

(Start: 11 @144961 has 60 MA's), (Start: 18 @145027 has 1 MA's), (20, 145069), (22, 145093), (24, 145111), (29, 145150), (36, 145222), (37, 145237), (40, 145294), (42, 145300), (43, 145327), (46, 145402), (48, 145414), (55, 145489), (56, 145492), (62, 145600), (66, 145684), (69, 145711), (73, 145798), (85, 145972), (88, 145996), (90, 146053), (94, 146140), (101, 146248), (105, 146308), (115, 146419), (117, 146431), (121, 146482), (125, 146539), (139, 146686), (148, 146809), (150, 146836), (151, 146839), (152, 146842), (153, 146845), (159, 146902), (162, 146950), (172, 147010), (174, 147019), (186, 147130),

Gene: JeanGrey_1 Start: 1, Stop: 2082, Start Num: 10

Candidate Starts for JeanGrey_1:

(10, 1), (27, 172), (29, 193), (35, 259), (40, 337), (42, 343), (49, 466), (50, 469), (52, 475), (53, 487), (59, 586), (60, 628), (62, 643), (64, 679), (65, 685), (67, 733), (69, 754), (86, 1024), (94, 1153), (101, 1258), (118, 1447), (128, 1591), (129, 1594), (138, 1693), (144, 1771), (151, 1846), (169, 2008),

Gene: Jessibeth14_253 Start: 146595, Stop: 148811, Start Num: 11

Candidate Starts for Jessibeth14_253:

(2, 146313), (Start: 11 @146595 has 60 MA's), (Start: 18 @146661 has 1 MA's), (20, 146703), (22, 146727), (24, 146745), (29, 146784), (36, 146856), (37, 146871), (40, 146928), (42, 146934), (43, 146961), (46, 147036), (48, 147048), (55, 147123), (56, 147126), (62, 147234), (66, 147318), (69, 147345), (73, 147432), (85, 147606), (88, 147630), (90, 147687), (94, 147774), (101, 147882), (105, 147942), (115, 148053), (117, 148065), (119, 148074), (121, 148116), (125, 148173), (139, 148320), (148, 148443), (150, 148470), (151, 148473), (152, 148476), (153, 148479), (159, 148536), (162, 148584), (172, 148644), (174, 148653), (186, 148764),

Gene: JigglyPuff_259 Start: 147090, Stop: 149306, Start Num: 11

Candidate Starts for JigglyPuff_259:

(2, 146808), (Start: 11 @147090 has 60 MA's), (Start: 18 @147156 has 1 MA's), (20, 147198), (22, 147222), (24, 147240), (29, 147279), (36, 147351), (37, 147366), (40, 147423), (42, 147429), (43, 147456), (46, 147531), (48, 147543), (55, 147618), (56, 147621), (62, 147729), (66, 147813), (69, 147840), (73, 147927), (85, 148101), (88, 148125), (90, 148182), (94, 148269), (101, 148377), (105, 148437), (115, 148548), (117, 148560), (119, 148569), (121, 148611), (125, 148668), (137, 148800), (139, 148815), (148, 148938), (150, 148965), (151, 148968), (152, 148971), (153, 148974), (159, 149031), (162, 149079), (172, 149139), (174, 149148), (186, 149259),

Gene: Khaleesi_252 Start: 146062, Stop: 148278, Start Num: 11

Candidate Starts for Khaleesi_252:

(2, 145780), (Start: 11 @146062 has 60 MA's), (Start: 18 @146128 has 1 MA's), (20, 146170), (22, 146194), (24, 146212), (29, 146251), (36, 146323), (37, 146338), (40, 146395), (42, 146401), (43, 146428), (46, 146503), (48, 146515), (55, 146590), (56, 146593), (62, 146701), (66, 146785), (69, 146812), (73, 146899), (85, 147073), (88, 147097), (90, 147154), (94, 147241), (101, 147349), (105, 147409), (115, 147520), (117, 147532), (119, 147541), (121, 147583), (125, 147640), (139, 147787), (148, 147910), (150, 147937), (151, 147940), (152, 147943), (153, 147946), (159, 148003), (162, 148051), (172, 148111), (174, 148120), (186, 148231),

Gene: Lethe_254 Start: 146646, Stop: 148862, Start Num: 11

Candidate Starts for Lethe_254:

(2, 146364), (Start: 11 @146646 has 60 MA's), (Start: 18 @146712 has 1 MA's), (20, 146754), (22, 146778), (24, 146796), (29, 146835), (36, 146907), (37, 146922), (40, 146979), (42, 146985), (43, 147012), (46, 147087), (48, 147099), (55, 147174), (56, 147177), (62, 147285), (66, 147369), (69, 147396), (73, 147483), (85, 147657), (88, 147681), (90, 147738), (94, 147825), (101, 147933), (105, 147993), (115, 148104), (117, 148116), (119, 148125), (121, 148167), (125, 148224), (137, 148356), (139, 148371), (148, 148494), (150, 148521), (151, 148524), (152, 148527), (153, 148530), (159, 148587), (162, 148635), (172, 148695), (174, 148704), (186, 148815),

Gene: Loanshark_250 Start: 145411, Stop: 147627, Start Num: 11

Candidate Starts for Loanshark_250:

(2, 145129), (Start: 11 @145411 has 60 MA's), (Start: 18 @145477 has 1 MA's), (20, 145519), (22, 145543), (24, 145561), (29, 145600), (36, 145672), (37, 145687), (40, 145744), (42, 145750), (43, 145777), (46, 145852), (48, 145864), (55, 145939), (56, 145942), (62, 146050), (66, 146134), (69, 146161), (73, 146248), (85, 146422), (88, 146446), (90, 146503), (94, 146590), (101, 146698), (105, 146758), (115, 146869), (117, 146881), (119, 146890), (121, 146932), (125, 146989), (137, 147121), (139, 147136), (148, 147259), (150, 147286), (151, 147289), (152, 147292), (153, 147295), (159, 147352), (162, 147400), (172, 147460), (174, 147469), (186, 147580),

Gene: Maby2021_254 Start: 146964, Stop: 149180, Start Num: 11

Candidate Starts for Maby2021_254:

(2, 146682), (Start: 11 @146964 has 60 MA's), (Start: 18 @147030 has 1 MA's), (20, 147072), (22, 147096), (24, 147114), (29, 147153), (36, 147225), (37, 147240), (40, 147297), (42, 147303), (43, 147330), (46, 147405), (48, 147417), (55, 147492), (56, 147495), (62, 147603), (66, 147687), (69, 147714), (73, 147801), (85, 147975), (88, 147999), (90, 148056), (94, 148143), (101, 148251), (105, 148311), (115, 148422), (117, 148434), (119, 148443), (121, 148485), (125, 148542), (137, 148674), (139, 148689), (148, 148812), (150, 148839), (151, 148842), (152, 148845), (153, 148848), (159, 148905), (162, 148953), (172, 149013), (174, 149022), (186, 149133),

Gene: McWolfish_250 Start: 145273, Stop: 147489, Start Num: 11

Candidate Starts for McWolfish_250:

(2, 144991), (Start: 11 @145273 has 60 MA's), (Start: 18 @145339 has 1 MA's), (20, 145381), (22, 145405), (24, 145423), (29, 145462), (36, 145534), (37, 145549), (40, 145606), (42, 145612), (43, 145639), (46, 145714), (48, 145726), (55, 145801), (56, 145804), (62, 145912), (66, 145996), (69, 146023), (73, 146110), (85, 146284), (88, 146308), (90, 146365), (94, 146452), (101, 146560), (105, 146620), (115, 146731), (117, 146743), (119, 146752), (121, 146794), (125, 146851), (139, 146998), (148, 147121), (150, 147148), (151, 147151), (152, 147154), (153, 147157), (159, 147214), (162, 147262), (172, 147322), (174, 147331), (186, 147442),

Gene: Megamind_250 Start: 145598, Stop: 147814, Start Num: 11

Candidate Starts for Megamind_250:

(2, 145316), (Start: 11 @145598 has 60 MA's), (Start: 18 @145664 has 1 MA's), (20, 145706), (22, 145730), (24, 145748), (29, 145787), (36, 145859), (37, 145874), (40, 145931), (42, 145937), (43,

145964), (46, 146039), (48, 146051), (55, 146126), (56, 146129), (62, 146237), (66, 146321), (69, 146348), (73, 146435), (85, 146609), (88, 146633), (90, 146690), (94, 146777), (101, 146885), (105, 146945), (115, 147056), (117, 147068), (119, 147077), (121, 147119), (125, 147176), (137, 147308), (139, 147323), (148, 147446), (150, 147473), (151, 147476), (152, 147479), (153, 147482), (159, 147539), (162, 147587), (172, 147647), (174, 147656), (186, 147767),

Gene: MikeLiesIn_254 Start: 146734, Stop: 148950, Start Num: 11

Candidate Starts for MikeLiesIn_254:

(2, 146452), (Start: 11 @146734 has 60 MA's), (Start: 18 @146800 has 1 MA's), (20, 146842), (22, 146866), (24, 146884), (29, 146923), (36, 146995), (37, 147010), (40, 147067), (42, 147073), (43, 147100), (46, 147175), (48, 147187), (55, 147262), (56, 147265), (62, 147373), (66, 147457), (69, 147484), (73, 147571), (85, 147745), (88, 147769), (90, 147826), (94, 147913), (101, 148021), (105, 148081), (115, 148192), (117, 148204), (119, 148213), (121, 148255), (125, 148312), (137, 148444), (139, 148459), (148, 148582), (150, 148609), (151, 148612), (152, 148615), (153, 148618), (159, 148675), (162, 148723), (172, 148783), (174, 148792), (186, 148903),

Gene: MoMoMixon_249 Start: 145693, Stop: 147909, Start Num: 11

Candidate Starts for MoMoMixon_249:

(2, 145411), (Start: 11 @145693 has 60 MA's), (Start: 18 @145759 has 1 MA's), (20, 145801), (22, 145825), (24, 145843), (29, 145882), (36, 145954), (37, 145969), (40, 146026), (42, 146032), (43, 146059), (46, 146134), (48, 146146), (55, 146221), (56, 146224), (62, 146332), (66, 146416), (69, 146443), (73, 146530), (85, 146704), (88, 146728), (90, 146785), (94, 146872), (101, 146980), (105, 147040), (115, 147151), (117, 147163), (119, 147172), (121, 147214), (125, 147271), (137, 147403), (139, 147418), (148, 147541), (150, 147568), (151, 147571), (152, 147574), (153, 147577), (159, 147634), (162, 147682), (172, 147742), (174, 147751), (186, 147862),

Gene: Myrna_246 Start: 148768, Stop: 151059, Start Num: 9

Candidate Starts for Myrna_246:

(1, 148270), (Start: 9 @148768 has 3 MA's), (Start: 18 @148837 has 1 MA's), (21, 148900), (25, 148927), (28, 148957), (35, 149026), (36, 149032), (42, 149110), (46, 149212), (48, 149224), (49, 149233), (55, 149299), (57, 149332), (60, 149395), (70, 149527), (71, 149560), (78, 149677), (79, 149683), (81, 149743), (82, 149749), (83, 149755), (84, 149764), (86, 149803), (90, 149869), (93, 149914), (94, 149956), (96, 149965), (99, 150049), (101, 150061), (103, 150091), (104, 150094), (107, 150187), (109, 150232), (111, 150256), (112, 150280), (113, 150292), (119, 150325), (121, 150367), (122, 150373), (130, 150487), (139, 150571), (140, 150607), (150, 150709), (151, 150712), (152, 150715), (155, 150724), (164, 150832), (167, 150847), (173, 150883), (182, 150964),

Gene: Nappy_252 Start: 146633, Stop: 148849, Start Num: 11

Candidate Starts for Nappy_252:

(2, 146351), (Start: 11 @146633 has 60 MA's), (Start: 18 @146699 has 1 MA's), (20, 146741), (22, 146765), (24, 146783), (29, 146822), (36, 146894), (37, 146909), (40, 146966), (42, 146972), (43, 146999), (46, 147074), (48, 147086), (55, 147161), (56, 147164), (62, 147272), (66, 147356), (69, 147383), (73, 147470), (85, 147644), (88, 147668), (90, 147725), (94, 147812), (101, 147920), (105, 147980), (115, 148091), (117, 148103), (119, 148112), (121, 148154), (125, 148211), (137, 148343), (139, 148358), (148, 148481), (150, 148508), (151, 148511), (152, 148514), (153, 148517), (159, 148574), (162, 148622), (172, 148682), (174, 148691), (186, 148802),

Gene: NedWong_252 Start: 145985, Stop: 148201, Start Num: 11

Candidate Starts for NedWong_252:

(2, 145703), (Start: 11 @145985 has 60 MA's), (Start: 18 @146051 has 1 MA's), (20, 146093), (22, 146117), (24, 146135), (29, 146174), (36, 146246), (37, 146261), (40, 146318), (42, 146324), (43, 146351), (46, 146426), (48, 146438), (55, 146513), (56, 146516), (62, 146624), (66, 146708), (69, 146735), (73, 146822), (85, 146996), (88, 147020), (90, 147077), (94, 147164), (101, 147272), (105,

147332), (115, 147443), (117, 147455), (119, 147464), (121, 147506), (125, 147563), (137, 147695), (139, 147710), (148, 147833), (150, 147860), (151, 147863), (152, 147866), (153, 147869), (159, 147926), (162, 147974), (172, 148034), (174, 148043), (186, 148154),

Gene: Norm_253 Start: 146254, Stop: 148470, Start Num: 11

Candidate Starts for Norm_253:

(2, 145972), (Start: 11 @146254 has 60 MA's), (Start: 18 @146320 has 1 MA's), (20, 146362), (22, 146386), (24, 146404), (29, 146443), (36, 146515), (37, 146530), (40, 146587), (42, 146593), (43, 146620), (46, 146695), (48, 146707), (55, 146782), (56, 146785), (62, 146893), (66, 146977), (69, 147004), (73, 147091), (85, 147265), (88, 147289), (90, 147346), (94, 147433), (101, 147541), (105, 147601), (115, 147712), (117, 147724), (119, 147733), (121, 147775), (125, 147832), (137, 147964), (139, 147979), (148, 148102), (150, 148129), (151, 148132), (152, 148135), (153, 148138), (159, 148195), (162, 148243), (172, 148303), (174, 148312), (186, 148423),

Gene: NuevoMundo_255 Start: 146740, Stop: 148956, Start Num: 11

Candidate Starts for NuevoMundo_255:

(Start: 8 @146734 has 1 MA's), (Start: 11 @146740 has 60 MA's), (Start: 18 @146806 has 1 MA's), (20, 146848), (22, 146872), (24, 146890), (29, 146929), (36, 147001), (37, 147016), (40, 147073), (42, 147079), (43, 147106), (46, 147181), (48, 147193), (55, 147268), (56, 147271), (62, 147379), (69, 147490), (73, 147577), (85, 147751), (88, 147775), (90, 147832), (94, 147919), (101, 148027), (105, 148087), (115, 148198), (117, 148210), (121, 148261), (125, 148318), (139, 148465), (148, 148588), (150, 148615), (151, 148618), (152, 148621), (153, 148624), (159, 148681), (162, 148729), (172, 148789), (174, 148798), (186, 148909),

Gene: ParkTD_252 Start: 145824, Stop: 148040, Start Num: 11

Candidate Starts for ParkTD_252:

(2, 145542), (Start: 11 @145824 has 60 MA's), (Start: 18 @145890 has 1 MA's), (20, 145932), (22, 145956), (24, 145974), (29, 146013), (36, 146085), (37, 146100), (40, 146157), (42, 146163), (43, 146190), (46, 146265), (48, 146277), (55, 146352), (56, 146355), (62, 146463), (66, 146547), (69, 146574), (73, 146661), (85, 146835), (88, 146859), (90, 146916), (94, 147003), (101, 147111), (105, 147171), (115, 147282), (117, 147294), (119, 147303), (121, 147345), (125, 147402), (137, 147534), (139, 147549), (148, 147672), (150, 147699), (151, 147702), (152, 147705), (153, 147708), (159, 147765), (162, 147813), (172, 147873), (174, 147882), (186, 147993),

Gene: Phabba_256 Start: 148154, Stop: 150448, Start Num: 9

Candidate Starts for Phabba_256:

(Start: 9 @148154 has 3 MA's), (Start: 18 @148226 has 1 MA's), (21, 148289), (25, 148316), (35, 148415), (36, 148421), (38, 148445), (42, 148499), (46, 148601), (48, 148613), (49, 148622), (55, 148688), (57, 148721), (60, 148784), (63, 148805), (70, 148916), (71, 148949), (78, 149066), (79, 149072), (81, 149132), (83, 149144), (84, 149153), (86, 149192), (90, 149258), (93, 149303), (94, 149345), (96, 149354), (99, 149438), (101, 149450), (104, 149483), (107, 149576), (110, 149633), (111, 149645), (114, 149684), (119, 149714), (121, 149756), (122, 149762), (130, 149876), (134, 149903), (140, 149996), (141, 150005), (150, 150098), (151, 150101), (152, 150104), (155, 150113), (164, 150221), (167, 150236), (173, 150272), (179, 150329), (182, 150353), (184, 150368),

Gene: Phox_254 Start: 145479, Stop: 147695, Start Num: 11

Candidate Starts for Phox_254:

(2, 145197), (Start: 11 @145479 has 60 MA's), (Start: 18 @145545 has 1 MA's), (20, 145587), (22, 145611), (24, 145629), (29, 145668), (36, 145740), (37, 145755), (40, 145812), (42, 145818), (43, 145845), (46, 145920), (48, 145932), (55, 146007), (56, 146010), (62, 146118), (66, 146202), (69, 146229), (73, 146316), (85, 146490), (88, 146514), (90, 146571), (94, 146658), (101, 146766), (105, 146826), (115, 146937), (117, 146949), (119, 146958), (121, 147000), (125, 147057), (137, 147189), (139, 147204), (148, 147327), (150, 147354), (151, 147357), (152, 147360), (153, 147363), (159,

147420), (162, 147468), (172, 147528), (174, 147537), (186, 147648),

Gene: Pio_260 Start: 147558, Stop: 149774, Start Num: 11

Candidate Starts for Pio_260:

(2, 147276), (Start: 11 @147558 has 60 MA's), (Start: 18 @147624 has 1 MA's), (20, 147666), (22, 147690), (24, 147708), (29, 147747), (36, 147819), (37, 147834), (40, 147891), (42, 147897), (43, 147924), (46, 147999), (48, 148011), (55, 148086), (56, 148089), (62, 148197), (66, 148281), (69, 148308), (73, 148395), (85, 148569), (88, 148593), (90, 148650), (94, 148737), (101, 148845), (105, 148905), (115, 149016), (117, 149028), (119, 149037), (121, 149079), (125, 149136), (137, 149268), (139, 149283), (148, 149406), (150, 149433), (151, 149436), (152, 149439), (153, 149442), (159, 149499), (162, 149547), (172, 149607), (174, 149616), (186, 149727),

Gene: Pleione_257 Start: 146290, Stop: 148506, Start Num: 11

Candidate Starts for Pleione_257:

(2, 146008), (Start: 11 @146290 has 60 MA's), (Start: 18 @146356 has 1 MA's), (20, 146398), (22, 146422), (24, 146440), (29, 146479), (36, 146551), (37, 146566), (40, 146623), (42, 146629), (43, 146656), (46, 146731), (48, 146743), (55, 146818), (56, 146821), (62, 146929), (66, 147013), (69, 147040), (73, 147127), (85, 147301), (88, 147325), (90, 147382), (94, 147469), (101, 147577), (105, 147637), (115, 147748), (117, 147760), (119, 147769), (121, 147811), (125, 147868), (137, 148000), (139, 148015), (148, 148138), (150, 148165), (151, 148168), (152, 148171), (153, 148174), (159, 148231), (162, 148279), (172, 148339), (174, 148348), (186, 148459),

Gene: Pupper_174 Start: 126973, Stop: 129177, Start Num: 14

Candidate Starts for Pupper_174:

(3, 126796), (4, 126799), (5, 126823), (Start: 14 @126973 has 2 MA's), (16, 127009), (Start: 18 @127018 has 1 MA's), (23, 127087), (29, 127141), (31, 127162), (36, 127213), (41, 127288), (42, 127291), (44, 127354), (47, 127402), (50, 127417), (55, 127480), (60, 127576), (62, 127591), (68, 127693), (69, 127702), (70, 127708), (73, 127789), (76, 127828), (79, 127864), (80, 127894), (86, 127975), (89, 127990), (91, 128044), (94, 128128), (96, 128137), (99, 128221), (100, 128224), (101, 128233), (103, 128263), (104, 128266), (108, 128365), (115, 128488), (121, 128551), (124, 128599), (130, 128674), (132, 128683), (152, 128902), (155, 128911), (164, 129022), (168, 129040), (171, 129064), (172, 129067), (177, 129106), (183, 129151),

Gene: PurduePete_254 Start: 147004, Stop: 149220, Start Num: 11

Candidate Starts for PurduePete_254:

(2, 146722), (Start: 11 @147004 has 60 MA's), (Start: 18 @147070 has 1 MA's), (20, 147112), (22, 147136), (24, 147154), (29, 147193), (36, 147265), (37, 147280), (40, 147337), (42, 147343), (43, 147370), (46, 147445), (48, 147457), (55, 147532), (56, 147535), (62, 147643), (66, 147727), (69, 147754), (73, 147841), (85, 148015), (88, 148039), (90, 148096), (94, 148183), (101, 148291), (105, 148351), (115, 148462), (117, 148474), (119, 148483), (121, 148525), (125, 148582), (139, 148729), (148, 148852), (150, 148879), (151, 148882), (152, 148885), (153, 148888), (159, 148945), (162, 148993), (172, 149053), (174, 149062), (186, 149173),

Gene: RedWattleHog_1 Start: 1, Stop: 2160, Start Num: 7

Candidate Starts for RedWattleHog_1:

(Start: 7 @1 has 2 MA's), (15, 58), (17, 76), (19, 109), (26, 172), (29, 202), (34, 262), (36, 274), (44, 415), (45, 451), (49, 475), (60, 637), (65, 694), (69, 763), (75, 880), (79, 925), (86, 1045), (88, 1054), (94, 1153), (95, 1156), (98, 1219), (101, 1258), (102, 1270), (121, 1504), (124, 1552), (126, 1591), (130, 1627), (131, 1633), (136, 1675), (142, 1789), (156, 1900), (157, 1936),

Gene: Roots515_256 Start: 147106, Stop: 149322, Start Num: 11

Candidate Starts for Roots515_256:

(2, 146824), (Start: 11 @147106 has 60 MA's), (Start: 18 @147172 has 1 MA's), (20, 147214), (22, 147238), (24, 147256), (29, 147295), (36, 147367), (37, 147382), (40, 147439), (42, 147445), (43, 147472), (46, 147547), (48, 147559), (55, 147634), (56, 147637), (62, 147745), (66, 147829), (69, 147856), (73, 147943), (85, 148117), (88, 148141), (90, 148198), (94, 148285), (101, 148393), (105, 148453), (115, 148564), (117, 148576), (119, 148585), (121, 148627), (125, 148684), (137, 148816), (139, 148831), (148, 148954), (150, 148981), (151, 148984), (152, 148987), (153, 148990), (159, 149047), (162, 149095), (172, 149155), (174, 149164), (186, 149275),

Gene: SCentae_173 Start: 127166, Stop: 129370, Start Num: 14

Candidate Starts for SCentae_173:

(3, 126989), (4, 126992), (5, 127016), (Start: 14 @127166 has 2 MA's), (16, 127202), (Start: 18 @127211 has 1 MA's), (23, 127280), (29, 127334), (31, 127355), (36, 127406), (41, 127481), (42, 127484), (44, 127547), (47, 127595), (50, 127610), (55, 127673), (60, 127769), (62, 127784), (68, 127886), (69, 127895), (70, 127901), (73, 127982), (76, 128021), (79, 128057), (80, 128087), (86, 128168), (89, 128183), (91, 128237), (94, 128321), (96, 128330), (99, 128414), (100, 128417), (101, 128426), (103, 128456), (104, 128459), (108, 128558), (115, 128681), (121, 128744), (124, 128792), (130, 128867), (132, 128876), (152, 129095), (155, 129104), (164, 129215), (168, 129233), (171, 129257), (172, 129260), (177, 129299), (183, 129344),

Gene: SVoro_249 Start: 145863, Stop: 148079, Start Num: 11

Candidate Starts for SVoro_249:

(2, 145581), (Start: 11 @145863 has 60 MA's), (Start: 18 @145929 has 1 MA's), (20, 145971), (22, 145995), (24, 146013), (29, 146052), (36, 146124), (37, 146139), (40, 146196), (42, 146202), (43, 146229), (46, 146304), (48, 146316), (55, 146391), (56, 146394), (62, 146502), (66, 146586), (69, 146613), (73, 146700), (85, 146874), (88, 146898), (90, 146955), (94, 147042), (101, 147150), (105, 147210), (115, 147321), (117, 147333), (119, 147342), (121, 147384), (125, 147441), (139, 147588), (148, 147711), (150, 147738), (151, 147741), (152, 147744), (153, 147747), (159, 147804), (162, 147852), (172, 147912), (174, 147921), (186, 148032),

Gene: Salacia_255 Start: 147430, Stop: 149646, Start Num: 11

Candidate Starts for Salacia_255:

(2, 147148), (Start: 11 @147430 has 60 MA's), (Start: 18 @147496 has 1 MA's), (20, 147538), (22, 147562), (24, 147580), (29, 147619), (36, 147691), (37, 147706), (40, 147763), (42, 147769), (43, 147796), (46, 147871), (48, 147883), (55, 147958), (56, 147961), (62, 148069), (66, 148153), (69, 148180), (73, 148267), (85, 148441), (88, 148465), (90, 148522), (94, 148609), (101, 148717), (105, 148777), (115, 148888), (117, 148900), (119, 148909), (121, 148951), (125, 149008), (137, 149140), (139, 149155), (148, 149278), (150, 149305), (151, 149308), (152, 149311), (153, 149314), (159, 149371), (162, 149419), (172, 149479), (174, 149488), (186, 149599),

Gene: ScoobyDoobyDoo_242 Start: 145108, Stop: 147399, Start Num: 9

Candidate Starts for ScoobyDoobyDoo_242:

(Start: 9 @145108 has 3 MA's), (21, 145240), (28, 145297), (35, 145366), (36, 145372), (39, 145438), (42, 145450), (46, 145552), (48, 145564), (49, 145573), (55, 145639), (57, 145672), (60, 145735), (61, 145741), (63, 145756), (70, 145867), (71, 145900), (72, 145912), (74, 145957), (78, 146017), (79, 146023), (81, 146083), (82, 146089), (83, 146095), (86, 146143), (87, 146149), (88, 146152), (90, 146209), (93, 146254), (94, 146296), (99, 146389), (101, 146401), (113, 146632), (120, 146698), (121, 146707), (130, 146827), (134, 146854), (139, 146911), (140, 146947), (146, 146998), (151, 147052), (152, 147055), (164, 147172), (167, 147187), (173, 147223),

Gene: Sebata_253 Start: 146149, Stop: 148365, Start Num: 11

Candidate Starts for Sebata_253:

(Start: 11 @146149 has 60 MA's), (Start: 18 @146215 has 1 MA's), (20, 146257), (22, 146281), (24, 146299), (29, 146338), (36, 146410), (37, 146425), (40, 146482), (42, 146488), (43, 146515), (46,

146590), (48, 146602), (55, 146677), (56, 146680), (62, 146788), (66, 146872), (69, 146899), (73, 146986), (85, 147160), (88, 147184), (90, 147241), (94, 147328), (101, 147436), (105, 147496), (115, 147607), (117, 147619), (121, 147670), (125, 147727), (139, 147874), (148, 147997), (150, 148024), (151, 148027), (152, 148030), (153, 148033), (159, 148090), (162, 148138), (172, 148198), (174, 148207), (186, 148318),

Gene: Shelob_254 Start: 147424, Stop: 149640, Start Num: 11

Candidate Starts for Shelob_254:

(2, 147142), (Start: 11 @147424 has 60 MA's), (Start: 18 @147490 has 1 MA's), (20, 147532), (22, 147556), (24, 147574), (29, 147613), (36, 147685), (37, 147700), (40, 147757), (42, 147763), (43, 147790), (46, 147865), (48, 147877), (55, 147952), (56, 147955), (62, 148063), (66, 148147), (69, 148174), (73, 148261), (85, 148435), (88, 148459), (90, 148516), (94, 148603), (101, 148711), (105, 148771), (115, 148882), (117, 148894), (119, 148903), (121, 148945), (125, 149002), (137, 149134), (139, 149149), (148, 149272), (150, 149299), (151, 149302), (152, 149305), (153, 149308), (159, 149365), (162, 149413), (172, 149473), (174, 149482), (186, 149593),

Gene: ShiaLabeouf_251 Start: 145283, Stop: 147499, Start Num: 11

Candidate Starts for ShiaLabeouf_251:

(2, 145001), (Start: 11 @145283 has 60 MA's), (Start: 18 @145349 has 1 MA's), (20, 145391), (22, 145415), (24, 145433), (29, 145472), (36, 145544), (37, 145559), (40, 145616), (42, 145622), (43, 145649), (46, 145724), (48, 145736), (55, 145811), (56, 145814), (62, 145922), (66, 146006), (69, 146033), (73, 146120), (85, 146294), (88, 146318), (90, 146375), (94, 146462), (101, 146570), (105, 146630), (115, 146741), (117, 146753), (119, 146762), (121, 146804), (125, 146861), (137, 146993), (139, 147008), (148, 147131), (150, 147158), (151, 147161), (152, 147164), (153, 147167), (159, 147224), (162, 147272), (172, 147332), (174, 147341), (186, 147452),

Gene: Shifa_229 Start: 144757, Stop: 146973, Start Num: 11

Candidate Starts for Shifa_229:

(Start: 11 @144757 has 60 MA's), (Start: 18 @144823 has 1 MA's), (20, 144865), (22, 144889), (24, 144907), (29, 144946), (36, 145018), (37, 145033), (40, 145090), (42, 145096), (43, 145123), (46, 145198), (48, 145210), (55, 145285), (56, 145288), (62, 145396), (66, 145480), (69, 145507), (73, 145594), (85, 145768), (88, 145792), (90, 145849), (94, 145936), (101, 146044), (105, 146104), (115, 146215), (117, 146227), (121, 146278), (125, 146335), (139, 146482), (148, 146605), (150, 146632), (151, 146635), (152, 146638), (153, 146641), (159, 146698), (162, 146746), (172, 146806), (174, 146815), (186, 146926),

Gene: Shnickers_252 Start: 145347, Stop: 147563, Start Num: 11

Candidate Starts for Shnickers_252:

(2, 145065), (Start: 11 @145347 has 60 MA's), (Start: 18 @145413 has 1 MA's), (20, 145455), (22, 145479), (24, 145497), (29, 145536), (36, 145608), (37, 145623), (40, 145680), (42, 145686), (43, 145713), (46, 145788), (48, 145800), (55, 145875), (56, 145878), (62, 145986), (66, 146070), (69, 146097), (73, 146184), (85, 146358), (88, 146382), (90, 146439), (94, 146526), (101, 146634), (105, 146694), (115, 146805), (117, 146817), (119, 146826), (121, 146868), (125, 146925), (137, 147057), (139, 147072), (148, 147195), (150, 147222), (151, 147225), (152, 147228), (153, 147231), (159, 147288), (162, 147336), (172, 147396), (174, 147405), (186, 147516),

Gene: Shrimp_256 Start: 147041, Stop: 149257, Start Num: 11

Candidate Starts for Shrimp_256:

(2, 146759), (Start: 11 @147041 has 60 MA's), (Start: 18 @147107 has 1 MA's), (20, 147149), (22, 147173), (24, 147191), (29, 147230), (36, 147302), (37, 147317), (40, 147374), (42, 147380), (43, 147407), (46, 147482), (48, 147494), (55, 147569), (56, 147572), (62, 147680), (66, 147764), (69, 147791), (73, 147878), (85, 148052), (88, 148076), (90, 148133), (94, 148220), (101, 148328), (105, 148388), (115, 148499), (117, 148511), (121, 148562), (125, 148619), (139, 148766), (148, 148889),

(150, 148916), (151, 148919), (152, 148922), (153, 148925), (159, 148982), (162, 149030), (172, 149090), (174, 149099), (186, 149210),

Gene: Skog_6 Start: 3539, Stop: 5740, Start Num: 13

Candidate Starts for Skog_6:

(Start: 13 @3539 has 1 MA's), (16, 3575), (Start: 18 @3584 has 1 MA's), (23, 3653), (29, 3707), (31, 3728), (32, 3746), (33, 3764), (41, 3854), (42, 3857), (44, 3920), (47, 3968), (50, 3983), (55, 4046), (60, 4142), (62, 4157), (68, 4259), (69, 4268), (70, 4274), (73, 4355), (76, 4394), (78, 4424), (79, 4430), (80, 4460), (86, 4541), (89, 4556), (90, 4607), (91, 4610), (93, 4652), (94, 4694), (96, 4703), (99, 4787), (100, 4790), (101, 4799), (103, 4829), (108, 4931), (115, 5054), (121, 5117), (130, 5240), (152, 5468), (164, 5588), (168, 5606), (171, 5630), (172, 5633), (177, 5672), (180, 5702), (183, 5714),

Gene: SrishMeg2525_251 Start: 146536, Stop: 148752, Start Num: 11

Candidate Starts for SrishMeg2525_251:

(2, 146254), (Start: 11 @146536 has 60 MA's), (Start: 18 @146602 has 1 MA's), (20, 146644), (22, 146668), (24, 146686), (29, 146725), (36, 146797), (37, 146812), (40, 146869), (42, 146875), (43, 146902), (46, 146977), (48, 146989), (55, 147064), (56, 147067), (62, 147175), (66, 147259), (69, 147286), (73, 147373), (85, 147547), (88, 147571), (90, 147628), (94, 147715), (101, 147823), (105, 147883), (115, 147994), (117, 148006), (119, 148015), (121, 148057), (125, 148114), (137, 148246), (139, 148261), (148, 148384), (150, 148411), (151, 148414), (152, 148417), (153, 148420), (159, 148477), (162, 148525), (172, 148585), (174, 148594), (186, 148705),

Gene: Stormageddon_1 Start: 1, Stop: 2160, Start Num: 7

Candidate Starts for Stormageddon_1:

(Start: 7 @1 has 2 MA's), (15, 58), (17, 76), (19, 109), (26, 172), (29, 202), (34, 262), (36, 274), (44, 415), (45, 451), (49, 475), (60, 637), (65, 694), (69, 763), (75, 880), (79, 925), (86, 1045), (88, 1054), (94, 1153), (95, 1156), (98, 1219), (101, 1258), (102, 1270), (121, 1504), (124, 1552), (126, 1591), (130, 1627), (131, 1633), (136, 1675), (142, 1789), (156, 1900), (157, 1936),

Gene: TinyTim_252 Start: 145360, Stop: 147576, Start Num: 11

Candidate Starts for TinyTim_252:

(2, 145078), (Start: 11 @145360 has 60 MA's), (Start: 18 @145426 has 1 MA's), (20, 145468), (22, 145492), (24, 145510), (29, 145549), (36, 145621), (37, 145636), (40, 145693), (42, 145699), (43, 145726), (46, 145801), (48, 145813), (55, 145888), (56, 145891), (62, 145999), (66, 146083), (69, 146110), (73, 146197), (85, 146371), (88, 146395), (90, 146452), (94, 146539), (101, 146647), (105, 146707), (115, 146818), (117, 146830), (119, 146839), (121, 146881), (125, 146938), (137, 147070), (139, 147085), (148, 147208), (150, 147235), (151, 147238), (152, 147241), (153, 147244), (159, 147301), (162, 147349), (172, 147409), (174, 147418), (186, 147529),

Gene: Tonenili_275 Start: 150692, Stop: 152905, Start Num: 12

Candidate Starts for Tonenili_275:

(Start: 12 @150692 has 1 MA's), (Start: 18 @150749 has 1 MA's), (24, 150833), (31, 150893), (36, 150944), (37, 150959), (39, 151010), (40, 151016), (41, 151019), (46, 151124), (48, 151136), (51, 151151), (52, 151154), (55, 151211), (56, 151214), (66, 151406), (69, 151433), (73, 151520), (88, 151721), (90, 151778), (93, 151823), (101, 151973), (104, 152006), (117, 152156), (119, 152165), (121, 152207), (122, 152213), (125, 152264), (139, 152411), (148, 152534), (150, 152561), (151, 152564), (152, 152567), (153, 152570), (159, 152627), (160, 152630), (161, 152648), (172, 152735), (174, 152744), (176, 152768), (181, 152816), (185, 152843),

Gene: Tortoise16_251 Start: 145373, Stop: 147589, Start Num: 11

Candidate Starts for Tortoise16_251:

(2, 145091), (Start: 11 @145373 has 60 MA's), (Start: 18 @145439 has 1 MA's), (20, 145481), (22, 145505), (24, 145523), (29, 145562), (36, 145634), (37, 145649), (40, 145706), (42, 145712), (43,

145739), (46, 145814), (48, 145826), (55, 145901), (56, 145904), (62, 146012), (66, 146096), (69, 146123), (73, 146210), (85, 146384), (88, 146408), (90, 146465), (94, 146552), (101, 146660), (105, 146720), (115, 146831), (117, 146843), (119, 146852), (121, 146894), (125, 146951), (137, 147083), (139, 147098), (148, 147221), (150, 147248), (151, 147251), (152, 147254), (153, 147257), (159, 147314), (162, 147362), (172, 147422), (174, 147431), (186, 147542),

Gene: Tyke_250 Start: 147496, Stop: 149712, Start Num: 11

Candidate Starts for Tyke_250:

(2, 147214), (Start: 11 @147496 has 60 MA's), (Start: 18 @147562 has 1 MA's), (20, 147604), (22, 147628), (24, 147646), (29, 147685), (36, 147757), (37, 147772), (40, 147829), (42, 147835), (43, 147862), (46, 147937), (48, 147949), (55, 148024), (56, 148027), (62, 148135), (66, 148219), (69, 148246), (73, 148333), (85, 148507), (88, 148531), (90, 148588), (94, 148675), (101, 148783), (105, 148843), (115, 148954), (117, 148966), (119, 148975), (121, 149017), (125, 149074), (137, 149206), (139, 149221), (148, 149344), (150, 149371), (151, 149374), (152, 149377), (153, 149380), (159, 149437), (162, 149485), (172, 149545), (174, 149554), (186, 149665),

Gene: YemiJoy2021_254 Start: 146478, Stop: 148694, Start Num: 11

Candidate Starts for YemiJoy2021_254:

(2, 146196), (Start: 11 @146478 has 60 MA's), (Start: 18 @146544 has 1 MA's), (20, 146586), (22, 146610), (24, 146628), (29, 146667), (36, 146739), (37, 146754), (40, 146811), (42, 146817), (43, 146844), (46, 146919), (48, 146931), (55, 147006), (56, 147009), (62, 147117), (66, 147201), (69, 147228), (73, 147315), (85, 147489), (88, 147513), (90, 147570), (94, 147657), (101, 147765), (105, 147825), (115, 147936), (117, 147948), (119, 147957), (121, 147999), (125, 148056), (137, 148188), (139, 148203), (148, 148326), (150, 148353), (151, 148356), (152, 148359), (153, 148362), (159, 148419), (162, 148467), (172, 148527), (174, 148536), (186, 148647),

Gene: Yucca_254 Start: 146919, Stop: 149135, Start Num: 11

Candidate Starts for Yucca_254:

(2, 146637), (Start: 11 @146919 has 60 MA's), (Start: 18 @146985 has 1 MA's), (20, 147027), (22, 147051), (24, 147069), (29, 147108), (36, 147180), (37, 147195), (40, 147252), (42, 147258), (43, 147285), (46, 147360), (48, 147372), (55, 147447), (56, 147450), (62, 147558), (66, 147642), (69, 147669), (73, 147756), (85, 147930), (88, 147954), (90, 148011), (94, 148098), (101, 148206), (105, 148266), (115, 148377), (117, 148389), (119, 148398), (121, 148440), (125, 148497), (137, 148629), (139, 148644), (148, 148767), (150, 148794), (151, 148797), (152, 148800), (153, 148803), (159, 148860), (162, 148908), (172, 148968), (174, 148977), (186, 149088),

Gene: Zalkecks_252 Start: 145576, Stop: 147792, Start Num: 11

Candidate Starts for Zalkecks_252:

(2, 145294), (Start: 11 @145576 has 60 MA's), (Start: 18 @145642 has 1 MA's), (20, 145684), (22, 145708), (24, 145726), (29, 145765), (36, 145837), (37, 145852), (40, 145909), (42, 145915), (43, 145942), (46, 146017), (48, 146029), (55, 146104), (56, 146107), (62, 146215), (66, 146299), (69, 146326), (73, 146413), (85, 146587), (88, 146611), (90, 146668), (94, 146755), (101, 146863), (105, 146923), (115, 147034), (117, 147046), (119, 147055), (121, 147097), (125, 147154), (137, 147286), (139, 147301), (148, 147424), (150, 147451), (151, 147454), (152, 147457), (153, 147460), (159, 147517), (162, 147565), (172, 147625), (174, 147634), (186, 147745),

Gene: Zeenon_254 Start: 146110, Stop: 148326, Start Num: 11

Candidate Starts for Zeenon_254:

(2, 145828), (Start: 11 @146110 has 60 MA's), (Start: 18 @146176 has 1 MA's), (20, 146218), (22, 146242), (24, 146260), (29, 146299), (36, 146371), (37, 146386), (40, 146443), (42, 146449), (43, 146476), (46, 146551), (48, 146563), (55, 146638), (56, 146641), (62, 146749), (66, 146833), (69, 146860), (73, 146947), (85, 147121), (88, 147145), (90, 147202), (94, 147289), (101, 147397), (105, 147457), (115, 147568), (117, 147580), (119, 147589), (121, 147631), (125, 147688), (137, 147820),

(139, 147835), (148, 147958), (150, 147985), (151, 147988), (152, 147991), (153, 147994), (159, 148051), (162, 148099), (172, 148159), (174, 148168), (186, 148279),