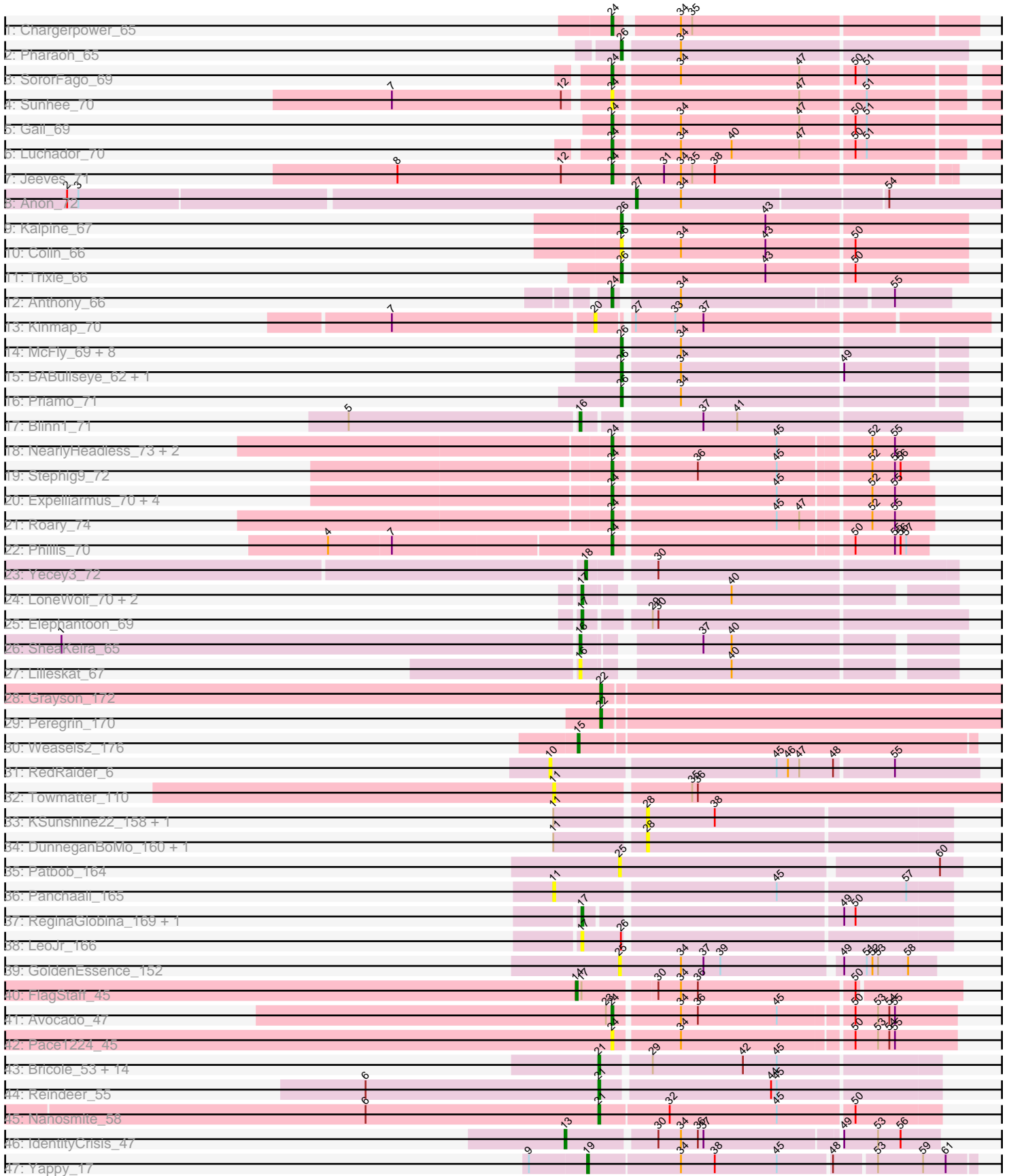


Pham 216094



Note: Tracks are now grouped by subcluster and scaled. Switching in subcluster is indicated by changes in track color. Track scale is now set by default to display the region 30 bp upstream of start 1 to 30 bp downstream of the last possible start. If this default region is judged to be packed too tightly with annotated starts, the track will be further scaled to only show that region of the ORF with annotated starts. This action will be indicated by adding "Zoomed" to the title. For starts, yellow indicates the location of called starts comprised solely of Glimmer/GeneMark auto-annotations, green indicates the location of called starts with at least 1 manual gene annotation.

Pham 216094 Report

This analysis was run 02/22/25 on database version 588.

Pham number 216094 has 81 members, 20 are drafts.

Phages represented in each track:

- Track 1 : Chargerpower_65
- Track 2 : Pharaoh_65
- Track 3 : SororFago_69
- Track 4 : Sunhee_70
- Track 5 : Gail_69
- Track 6 : Luchador_70
- Track 7 : Jeeves_71
- Track 8 : Anon_72
- Track 9 : Kalpine_67
- Track 10 : Colin_66
- Track 11 : Trixie_66
- Track 12 : Anthony_66
- Track 13 : Kinmap_70
- Track 14 : McFly_69, Dorothea_69, Pmask_68, Chartreuse_66, Neeharika16_68, JewelBug_69, SuperCallie99_66, Cookiedough_69, DaVinci_67
- Track 15 : BABullseye_62, Jordennis_68
- Track 16 : Priamo_71
- Track 17 : Blinn1_71
- Track 18 : NearlyHeadless_73, Dixon_72, Saintus_68
- Track 19 : Stephig9_72
- Track 20 : Expelliarmus_70, Groundhog_72, Astro_73, Danforth_73, Smeadley_73
- Track 21 : Roary_74
- Track 22 : Phillis_70
- Track 23 : Yecey3_72
- Track 24 : LoneWolf_70, BogosyJay_70, Maminiaina_70
- Track 25 : Elephantoon_69
- Track 26 : SheaKeira_65
- Track 27 : Lilleskat_67
- Track 28 : Grayson_172
- Track 29 : Peregrin_170
- Track 30 : Weasels2_176
- Track 31 : RedRaider_6
- Track 32 : Towmatter_110
- Track 33 : KSunshine22_158, Ellewin_159
- Track 34 : DunneganBoMo_160, WaddleDee_159
- Track 35 : Patbob_164
- Track 36 : Panchaali_165

- Track 37 : ReginaGlobina_169, Atuin_156
- Track 38 : LeoJr_166
- Track 39 : GoldenEssence_152
- Track 40 : FlagStaff_45
- Track 41 : Avocado_47
- Track 42 : Pace1224_45
- Track 43 : Bricole_53, Dulcita_54, Glaske16_54, Diminimus_54, KleverKiS_54, Auspice_53, IPhane7_53, Bongo_53, PegLeg_53, Skinny_54, FreakyGoo_54, SlimJimmy_52, LilhomieP_52, Izel_53, TyDawg_53
- Track 44 : Reindeer_55
- Track 45 : Nanosmite_58
- Track 46 : IdentityCrisis_47
- Track 47 : Yappy_17

Summary of Final Annotations (See graph section above for start numbers):

The start number called the most often in the published annotations is 24, it was called in 18 of the 61 non-draft genes in the pham.

Genes that call this "Most Annotated" start:

- Anthony_66, Astro_73, Avocado_47, Chargerpower_65, Danforth_73, Dixon_72, Expelliarmus_70, Gail_69, Groundhog_72, Jeeves_71, Luchador_70, NearlyHeadless_73, Pace1224_45, Phillis_70, Roary_74, Saintus_68, Smeadley_73, SororFago_69, Stephig9_72, Sunhee_70,

Genes that have the "Most Annotated" start but do not call it:

-

Genes that do not have the "Most Annotated" start:

- Anon_72, Atuin_156, Auspice_53, BABullseye_62, Blinn1_71, BogosyJay_70, Bongo_53, Bricole_53, Chartreuse_66, Colin_66, Cookiedough_69, DaVinci_67, Diminimus_54, Dorothea_69, Dulcita_54, DunneganBoMo_160, Elephantoon_69, Ellewin_159, FlagStaff_45, FreakyGoo_54, Glaske16_54, GoldenEssence_152, Grayson_172, IPhane7_53, IdentityCrisis_47, Izel_53, JewelBug_69, Jordennis_68, KSunshine22_158, Kalpine_67, Kinmap_70, KleverKiS_54, LeoJr_166, LilhomieP_52, Lilleskat_67, LoneWolf_70, Maminiaina_70, McFly_69, Nanosmite_58, Neeharika16_68, Panchaali_165, Patbob_164, PegLeg_53, Peregrin_170, Pharaoh_65, Pmask_68, Priamo_71, RedRaider_6, ReginaGlobina_169, Reindeer_55, SheaKeira_65, Skinny_54, SlimJimmy_52, SuperCallie99_66, Towmatter_110, Trixie_66, TyDawg_53, WaddleDee_159, Weasels2_176, Yappy_17, Yecey3_72,

Summary by start number:

Start 10:

- Found in 1 of 81 (1.2%) of genes in pham
- No Manual Annotations of this start.
- Called 100.0% of time when present
- Phage (with cluster) where this start called: RedRaider_6 (CR3),

Start 11:

- Found in 6 of 81 (7.4%) of genes in pham
- No Manual Annotations of this start.
- Called 33.3% of time when present
- Phage (with cluster) where this start called: Panchaali_165 (FC), Towmatter_110 (DL),

Start 13:

- Found in 1 of 81 (1.2%) of genes in pham
- Manual Annotations of this start: 1 of 61
- Called 100.0% of time when present
- Phage (with cluster) where this start called: IdentityCrisis_47 (singleton),

Start 14:

- Found in 1 of 81 (1.2%) of genes in pham
- Manual Annotations of this start: 1 of 61
- Called 100.0% of time when present
- Phage (with cluster) where this start called: FlagStaff_45 (G2),

Start 15:

- Found in 1 of 81 (1.2%) of genes in pham
- Manual Annotations of this start: 1 of 61
- Called 100.0% of time when present
- Phage (with cluster) where this start called: Weasels2_176 (CB),

Start 16:

- Found in 3 of 81 (3.7%) of genes in pham
- Manual Annotations of this start: 2 of 61
- Called 100.0% of time when present
- Phage (with cluster) where this start called: Blinn1_71 (A6), Lilleskat_67 (A9), SheaKeira_65 (A9),

Start 17:

- Found in 8 of 81 (9.9%) of genes in pham
- Manual Annotations of this start: 5 of 61
- Called 87.5% of time when present
- Phage (with cluster) where this start called: Atuin_156 (FC), BogosyJay_70 (A9), Elephantoon_69 (A9), LeoJr_166 (FC), LoneWolf_70 (A9), Maminiaina_70 (A9), ReginaGlobina_169 (FC),

Start 18:

- Found in 1 of 81 (1.2%) of genes in pham
- Manual Annotations of this start: 1 of 61
- Called 100.0% of time when present
- Phage (with cluster) where this start called: Yecey3_72 (A9),

Start 19:

- Found in 1 of 81 (1.2%) of genes in pham
- Manual Annotations of this start: 1 of 61
- Called 100.0% of time when present
- Phage (with cluster) where this start called: Yappy_17 (singleton),

Start 20:

- Found in 1 of 81 (1.2%) of genes in pham
- No Manual Annotations of this start.
- Called 100.0% of time when present
- Phage (with cluster) where this start called: Kinmap_70 (A21),

Start 21:

- Found in 17 of 81 (21.0%) of genes in pham
- Manual Annotations of this start: 14 of 61
- Called 100.0% of time when present
- Phage (with cluster) where this start called: Auspice_53 (M1), Bongo_53 (M1), Bricole_53 (M1), Diminimus_54 (M1), Dulcita_54 (M1), FreakyGoo_54 (M1), Glaske16_54 (M1), IPhane7_53 (M1), Izel_53 (M1), KleverKiS_54 (M1), LilhomieP_52 (M1), Nanosmite_58 (M3), PegLeg_53 (M1), Reindeer_55 (M1), Skinny_54 (M1), SlimJimmy_52 (M1), TyDawg_53 (M1),

Start 22:

- Found in 2 of 81 (2.5%) of genes in pham
- Manual Annotations of this start: 2 of 61
- Called 100.0% of time when present
- Phage (with cluster) where this start called: Grayson_172 (CB), Peregrin_170 (CB),

Start 24:

- Found in 20 of 81 (24.7%) of genes in pham
- Manual Annotations of this start: 18 of 61
- Called 100.0% of time when present
- Phage (with cluster) where this start called: Anthony_66 (A20), Astro_73 (A8), Avocado_47 (G2), Chargerpower_65 (A), Danforth_73 (A8), Dixon_72 (A8), Expelliarmus_70 (A8), Gail_69 (A14), Groundhog_72 (A8), Jeeves_71 (A14), Luchador_70 (A14), NearlyHeadless_73 (A8), Pace1224_45 (G2), Phillis_70 (A8), Roary_74 (A8), Saintus_68 (A8), Smeadley_73 (A8), SororFago_69 (A14), Stephig9_72 (A8), Sunhee_70 (A14),

Start 25:

- Found in 2 of 81 (2.5%) of genes in pham
- No Manual Annotations of this start.
- Called 100.0% of time when present
- Phage (with cluster) where this start called: GoldenEssence_152 (FC), Patbob_164 (FC),

Start 26:

- Found in 17 of 81 (21.0%) of genes in pham
- Manual Annotations of this start: 14 of 61
- Called 94.1% of time when present
- Phage (with cluster) where this start called: BABullseye_62 (A6), Chartreuse_66 (A6), Colin_66 (A2), Cookiedough_69 (A6), DaVinci_67 (A6), Dorothea_69 (A6), JewelBug_69 (A6), Jordennis_68 (A6), Kalpine_67 (A2), McFly_69 (A6), Neeharika16_68 (A6), Pharaoh_65 (A12), Pmask_68 (A6), Priamo_71 (A6), SuperCallie99_66 (A6), Trixie_66 (A2),

Start 27:

- Found in 2 of 81 (2.5%) of genes in pham
- Manual Annotations of this start: 1 of 61
- Called 50.0% of time when present

- Phage (with cluster) where this start called: Anon_72 (A15),

Start 28:

- Found in 4 of 81 (4.9%) of genes in pham
- No Manual Annotations of this start.
- Called 100.0% of time when present
- Phage (with cluster) where this start called: DunneganBoMo_160 (FC), Ellewin_159 (FC), KSunshine22_158 (FC), WaddleDee_159 (FC),

Summary by clusters:

There are 18 clusters represented in this pham: A15, A14, DL, G2, A, CR3, CB, A12, singleton, A21, A20, FC, M1, M3, A6, A9, A8, A2,

Info for manual annotations of cluster A:

- Start number 24 was manually annotated 1 time for cluster A.

Info for manual annotations of cluster A12:

- Start number 26 was manually annotated 1 time for cluster A12.

Info for manual annotations of cluster A14:

- Start number 24 was manually annotated 4 times for cluster A14.

Info for manual annotations of cluster A15:

- Start number 27 was manually annotated 1 time for cluster A15.

Info for manual annotations of cluster A2:

- Start number 26 was manually annotated 2 times for cluster A2.

Info for manual annotations of cluster A20:

- Start number 24 was manually annotated 1 time for cluster A20.

Info for manual annotations of cluster A6:

- Start number 16 was manually annotated 1 time for cluster A6.
- Start number 26 was manually annotated 11 times for cluster A6.

Info for manual annotations of cluster A8:

- Start number 24 was manually annotated 11 times for cluster A8.

Info for manual annotations of cluster A9:

- Start number 16 was manually annotated 1 time for cluster A9.
- Start number 17 was manually annotated 4 times for cluster A9.
- Start number 18 was manually annotated 1 time for cluster A9.

Info for manual annotations of cluster CB:

- Start number 15 was manually annotated 1 time for cluster CB.
- Start number 22 was manually annotated 2 times for cluster CB.

Info for manual annotations of cluster FC:

- Start number 17 was manually annotated 1 time for cluster FC.

Info for manual annotations of cluster G2:

- Start number 14 was manually annotated 1 time for cluster G2.
- Start number 24 was manually annotated 1 time for cluster G2.

Info for manual annotations of cluster M1:

- Start number 21 was manually annotated 13 times for cluster M1.

Info for manual annotations of cluster M3:

- Start number 21 was manually annotated 1 time for cluster M3.

Gene Information:

Gene: Anon_72 Start: 40724, Stop: 40530, Start Num: 27

Candidate Starts for Anon_72:

(2, 41021), (3, 41015), (Start: 27 @40724 has 1 MA's), (34, 40700), (54, 40595),

Gene: Anthony_66 Start: 40829, Stop: 40665, Start Num: 24

Candidate Starts for Anthony_66:

(Start: 24 @40829 has 18 MA's), (34, 40799), (55, 40694),

Gene: Astro_73 Start: 40939, Stop: 40778, Start Num: 24

Candidate Starts for Astro_73:

(Start: 24 @40939 has 18 MA's), (45, 40855), (52, 40810), (55, 40798),

Gene: Atuin_156 Start: 110180, Stop: 110365, Start Num: 17

Candidate Starts for Atuin_156:

(Start: 17 @110180 has 5 MA's), (49, 110309), (50, 110315),

Gene: Auspice_53 Start: 38208, Stop: 38381, Start Num: 21

Candidate Starts for Auspice_53:

(Start: 21 @38208 has 14 MA's), (29, 38232), (42, 38280), (45, 38298),

Gene: Avocado_47 Start: 37189, Stop: 37362, Start Num: 24

Candidate Starts for Avocado_47:

(23, 37186), (Start: 24 @37189 has 18 MA's), (34, 37222), (36, 37231), (45, 37273), (50, 37309), (53, 37321), (54, 37327), (55, 37330),

Gene: BABullseye_62 Start: 37899, Stop: 37726, Start Num: 26

Candidate Starts for BABullseye_62:

(Start: 26 @37899 has 14 MA's), (34, 37872), (49, 37788),

Gene: Blinn1_71 Start: 39967, Stop: 39776, Start Num: 16

Candidate Starts for Blinn1_71:

(5, 40087), (Start: 16 @39967 has 2 MA's), (37, 39910), (41, 39892),

Gene: BogosyJay_70 Start: 41590, Stop: 41414, Start Num: 17

Candidate Starts for BogosyJay_70:

(Start: 17 @41590 has 5 MA's), (40, 41524),

Gene: Bongo_53 Start: 38212, Stop: 38385, Start Num: 21

Candidate Starts for Bongo_53:
(Start: 21 @38212 has 14 MA's), (29, 38236), (42, 38284), (45, 38302),

Gene: Bricole_53 Start: 38194, Stop: 38367, Start Num: 21
Candidate Starts for Bricole_53:
(Start: 21 @38194 has 14 MA's), (29, 38218), (42, 38266), (45, 38284),

Gene: Chargerpower_65 Start: 39591, Stop: 39409, Start Num: 24
Candidate Starts for Chargerpower_65:
(Start: 24 @39591 has 18 MA's), (34, 39561), (35, 39555),

Gene: Chartreuse_66 Start: 39579, Stop: 39406, Start Num: 26
Candidate Starts for Chartreuse_66:
(Start: 26 @39579 has 14 MA's), (34, 39552),

Gene: Colin_66 Start: 42014, Stop: 41838, Start Num: 26
Candidate Starts for Colin_66:
(Start: 26 @42014 has 14 MA's), (34, 41987), (43, 41942), (50, 41897),

Gene: Cookiedough_69 Start: 40207, Stop: 40034, Start Num: 26
Candidate Starts for Cookiedough_69:
(Start: 26 @40207 has 14 MA's), (34, 40180),

Gene: DaVinci_67 Start: 39633, Stop: 39460, Start Num: 26
Candidate Starts for DaVinci_67:
(Start: 26 @39633 has 14 MA's), (34, 39606),

Gene: Danforth_73 Start: 40987, Stop: 40826, Start Num: 24
Candidate Starts for Danforth_73:
(Start: 24 @40987 has 18 MA's), (45, 40903), (52, 40858), (55, 40846),

Gene: Diminimus_54 Start: 38207, Stop: 38380, Start Num: 21
Candidate Starts for Diminimus_54:
(Start: 21 @38207 has 14 MA's), (29, 38231), (42, 38279), (45, 38297),

Gene: Dixon_72 Start: 40507, Stop: 40346, Start Num: 24
Candidate Starts for Dixon_72:
(Start: 24 @40507 has 18 MA's), (45, 40423), (52, 40378), (55, 40366),

Gene: Dorothea_69 Start: 40205, Stop: 40032, Start Num: 26
Candidate Starts for Dorothea_69:
(Start: 26 @40205 has 14 MA's), (34, 40178),

Gene: Dulcita_54 Start: 38208, Stop: 38381, Start Num: 21
Candidate Starts for Dulcita_54:
(Start: 21 @38208 has 14 MA's), (29, 38232), (42, 38280), (45, 38298),

Gene: DunneganBoMo_160 Start: 107120, Stop: 107278, Start Num: 28
Candidate Starts for DunneganBoMo_160:
(11, 107075), (28, 107120),

Gene: Elephantoon_69 Start: 40932, Stop: 40738, Start Num: 17
Candidate Starts for Elephantoon_69:

(Start: 17 @40932 has 5 MA's), (29, 40902), (30, 40899),

Gene: Ellewin_159 Start: 107224, Stop: 107382, Start Num: 28

Candidate Starts for Ellewin_159:

(11, 107179), (28, 107224), (38, 107260),

Gene: Expelliarmus_70 Start: 40711, Stop: 40550, Start Num: 24

Candidate Starts for Expelliarmus_70:

(Start: 24 @40711 has 18 MA's), (45, 40627), (52, 40582), (55, 40570),

Gene: FlagStaff_45 Start: 36055, Stop: 36249, Start Num: 14

Candidate Starts for FlagStaff_45:

(Start: 14 @36055 has 1 MA's), (Start: 17 @36058 has 5 MA's), (30, 36094), (34, 36106), (36, 36115), (50, 36196),

Gene: FreakyGoo_54 Start: 38208, Stop: 38381, Start Num: 21

Candidate Starts for FreakyGoo_54:

(Start: 21 @38208 has 14 MA's), (29, 38232), (42, 38280), (45, 38298),

Gene: Gail_69 Start: 42059, Stop: 41856, Start Num: 24

Candidate Starts for Gail_69:

(Start: 24 @42059 has 18 MA's), (34, 42026), (47, 41963), (50, 41936), (51, 41930),

Gene: Glaske16_54 Start: 38207, Stop: 38380, Start Num: 21

Candidate Starts for Glaske16_54:

(Start: 21 @38207 has 14 MA's), (29, 38231), (42, 38279), (45, 38297),

Gene: GoldenEssence_152 Start: 104838, Stop: 104999, Start Num: 25

Candidate Starts for GoldenEssence_152:

(25, 104838), (34, 104871), (37, 104883), (39, 104892), (49, 104952), (51, 104964), (52, 104967), (53, 104970), (58, 104985),

Gene: Grayson_172 Start: 92452, Stop: 92664, Start Num: 22

Candidate Starts for Grayson_172:

(Start: 22 @92452 has 2 MA's),

Gene: Groundhog_72 Start: 40917, Stop: 40756, Start Num: 24

Candidate Starts for Groundhog_72:

(Start: 24 @40917 has 18 MA's), (45, 40833), (52, 40788), (55, 40776),

Gene: IPHane7_53 Start: 38212, Stop: 38385, Start Num: 21

Candidate Starts for IPHane7_53:

(Start: 21 @38212 has 14 MA's), (29, 38236), (42, 38284), (45, 38302),

Gene: IdentityCrisis_47 Start: 31026, Stop: 31214, Start Num: 13

Candidate Starts for IdentityCrisis_47:

(Start: 13 @31026 has 1 MA's), (30, 31071), (34, 31083), (36, 31092), (37, 31095), (49, 31164), (53, 31182), (56, 31194),

Gene: Izel_53 Start: 38207, Stop: 38380, Start Num: 21

Candidate Starts for Izel_53:

(Start: 21 @38207 has 14 MA's), (29, 38231), (42, 38279), (45, 38297),

Gene: Jeeves_71 Start: 41042, Stop: 40869, Start Num: 24
Candidate Starts for Jeeves_71:
(8, 41156), (12, 41069), (Start: 24 @41042 has 18 MA's), (31, 41018), (34, 41009), (35, 41003), (38, 40991),

Gene: JewelBug_69 Start: 40499, Stop: 40326, Start Num: 26
Candidate Starts for JewelBug_69:
(Start: 26 @40499 has 14 MA's), (34, 40472),

Gene: Jordennis_68 Start: 39980, Stop: 39807, Start Num: 26
Candidate Starts for Jordennis_68:
(Start: 26 @39980 has 14 MA's), (34, 39953), (49, 39869),

Gene: KSunshine22_158 Start: 108183, Stop: 108341, Start Num: 28
Candidate Starts for KSunshine22_158:
(11, 108138), (28, 108183), (38, 108219),

Gene: Kalpine_67 Start: 42195, Stop: 42019, Start Num: 26
Candidate Starts for Kalpine_67:
(Start: 26 @42195 has 14 MA's), (43, 42123),

Gene: Kinmap_70 Start: 40504, Stop: 40307, Start Num: 20
Candidate Starts for Kinmap_70:
(7, 40609), (20, 40504), (Start: 27 @40489 has 1 MA's), (33, 40468), (37, 40453),

Gene: KleverKiS_54 Start: 38188, Stop: 38361, Start Num: 21
Candidate Starts for KleverKiS_54:
(Start: 21 @38188 has 14 MA's), (29, 38212), (42, 38260), (45, 38278),

Gene: LeoJr_166 Start: 110788, Stop: 110976, Start Num: 17
Candidate Starts for LeoJr_166:
(Start: 17 @110788 has 5 MA's), (Start: 26 @110809 has 14 MA's),

Gene: LilhomieP_52 Start: 38212, Stop: 38385, Start Num: 21
Candidate Starts for LilhomieP_52:
(Start: 21 @38212 has 14 MA's), (29, 38236), (42, 38284), (45, 38302),

Gene: Lilleskat_67 Start: 41392, Stop: 41216, Start Num: 16
Candidate Starts for Lilleskat_67:
(Start: 16 @41392 has 2 MA's), (40, 41326),

Gene: LoneWolf_70 Start: 41439, Stop: 41263, Start Num: 17
Candidate Starts for LoneWolf_70:
(Start: 17 @41439 has 5 MA's), (40, 41373),

Gene: Luchador_70 Start: 42522, Stop: 42328, Start Num: 24
Candidate Starts for Luchador_70:
(Start: 24 @42522 has 18 MA's), (34, 42489), (40, 42462), (47, 42426), (50, 42399), (51, 42393),

Gene: Maminiaina_70 Start: 41572, Stop: 41396, Start Num: 17
Candidate Starts for Maminiaina_70:
(Start: 17 @41572 has 5 MA's), (40, 41506),

Gene: McFly_69 Start: 40192, Stop: 40019, Start Num: 26

Candidate Starts for McFly_69:

(Start: 26 @40192 has 14 MA's), (34, 40165),

Gene: Nanosmite_58 Start: 39866, Stop: 40042, Start Num: 21

Candidate Starts for Nanosmite_58:

(6, 39743), (Start: 21 @39866 has 14 MA's), (32, 39902), (45, 39959), (50, 39998),

Gene: NearlyHeadless_73 Start: 40753, Stop: 40592, Start Num: 24

Candidate Starts for NearlyHeadless_73:

(Start: 24 @40753 has 18 MA's), (45, 40669), (52, 40624), (55, 40612),

Gene: Neeharika16_68 Start: 39659, Stop: 39486, Start Num: 26

Candidate Starts for Neeharika16_68:

(Start: 26 @39659 has 14 MA's), (34, 39632),

Gene: Pace1224_45 Start: 36103, Stop: 36276, Start Num: 24

Candidate Starts for Pace1224_45:

(Start: 24 @36103 has 18 MA's), (34, 36136), (50, 36223), (53, 36235), (54, 36241), (55, 36244),

Gene: Panchaali_165 Start: 107904, Stop: 108107, Start Num: 11

Candidate Starts for Panchaali_165:

(11, 107904), (45, 108018), (57, 108084),

Gene: Patbob_164 Start: 111552, Stop: 111728, Start Num: 25

Candidate Starts for Patbob_164:

(25, 111552), (60, 111717),

Gene: PegLeg_53 Start: 38211, Stop: 38384, Start Num: 21

Candidate Starts for PegLeg_53:

(Start: 21 @38211 has 14 MA's), (29, 38235), (42, 38283), (45, 38301),

Gene: Peregrin_170 Start: 91883, Stop: 92095, Start Num: 22

Candidate Starts for Peregrin_170:

(Start: 22 @91883 has 2 MA's),

Gene: Pharaoh_65 Start: 41502, Stop: 41326, Start Num: 26

Candidate Starts for Pharaoh_65:

(Start: 26 @41502 has 14 MA's), (34, 41475),

Gene: Phillis_70 Start: 40207, Stop: 40049, Start Num: 24

Candidate Starts for Phillis_70:

(4, 40354), (7, 40321), (Start: 24 @40207 has 18 MA's), (50, 40087), (55, 40066), (56, 40063), (57, 40060),

Gene: Pmask_68 Start: 40195, Stop: 40022, Start Num: 26

Candidate Starts for Pmask_68:

(Start: 26 @40195 has 14 MA's), (34, 40168),

Gene: Priamo_71 Start: 40046, Stop: 39873, Start Num: 26

Candidate Starts for Priamo_71:

(Start: 26 @40046 has 14 MA's), (34, 40019),

Gene: RedRaider_6 Start: 4303, Stop: 4524, Start Num: 10
Candidate Starts for RedRaider_6:
(10, 4303), (45, 4420), (46, 4426), (47, 4432), (48, 4450), (55, 4480),

Gene: ReginaGlobina_169 Start: 112062, Stop: 112247, Start Num: 17
Candidate Starts for ReginaGlobina_169:
(Start: 17 @112062 has 5 MA's), (49, 112191), (50, 112197),

Gene: Reindeer_55 Start: 39414, Stop: 39587, Start Num: 21
Candidate Starts for Reindeer_55:
(6, 39291), (Start: 21 @39414 has 14 MA's), (44, 39501), (45, 39504),

Gene: Roary_74 Start: 40972, Stop: 40811, Start Num: 24
Candidate Starts for Roary_74:
(Start: 24 @40972 has 18 MA's), (45, 40888), (47, 40876), (52, 40843), (55, 40831),

Gene: Saintus_68 Start: 37637, Stop: 37476, Start Num: 24
Candidate Starts for Saintus_68:
(Start: 24 @37637 has 18 MA's), (45, 37553), (52, 37508), (55, 37496),

Gene: SheaKeira_65 Start: 40520, Stop: 40344, Start Num: 16
Candidate Starts for SheaKeira_65:
(1, 40793), (Start: 16 @40520 has 2 MA's), (37, 40469), (40, 40454),

Gene: Skinny_54 Start: 38641, Stop: 38814, Start Num: 21
Candidate Starts for Skinny_54:
(Start: 21 @38641 has 14 MA's), (29, 38665), (42, 38713), (45, 38731),

Gene: SlimJimmy_52 Start: 38195, Stop: 38368, Start Num: 21
Candidate Starts for SlimJimmy_52:
(Start: 21 @38195 has 14 MA's), (29, 38219), (42, 38267), (45, 38285),

Gene: Smeadley_73 Start: 40833, Stop: 40672, Start Num: 24
Candidate Starts for Smeadley_73:
(Start: 24 @40833 has 18 MA's), (45, 40749), (52, 40704), (55, 40692),

Gene: SororFago_69 Start: 42242, Stop: 42048, Start Num: 24
Candidate Starts for SororFago_69:
(Start: 24 @42242 has 18 MA's), (34, 42209), (47, 42146), (50, 42119), (51, 42113),

Gene: Stephig9_72 Start: 40770, Stop: 40612, Start Num: 24
Candidate Starts for Stephig9_72:
(Start: 24 @40770 has 18 MA's), (36, 40728), (45, 40686), (52, 40641), (55, 40629), (56, 40626),

Gene: Sunhee_70 Start: 40582, Stop: 40388, Start Num: 24
Candidate Starts for Sunhee_70:
(7, 40693), (12, 40603), (Start: 24 @40582 has 18 MA's), (47, 40486), (51, 40453),

Gene: SuperCallie99_66 Start: 40079, Stop: 39906, Start Num: 26
Candidate Starts for SuperCallie99_66:
(Start: 26 @40079 has 14 MA's), (34, 40052),

Gene: Towmatter_110 Start: 68561, Stop: 68797, Start Num: 11

Candidate Starts for Towmatter_110:
(11, 68561), (35, 68630), (36, 68633),

Gene: Trixie_66 Start: 41830, Stop: 41654, Start Num: 26
Candidate Starts for Trixie_66:
(Start: 26 @41830 has 14 MA's), (43, 41758), (50, 41713),

Gene: TyDawg_53 Start: 38212, Stop: 38385, Start Num: 21
Candidate Starts for TyDawg_53:
(Start: 21 @38212 has 14 MA's), (29, 38236), (42, 38284), (45, 38302),

Gene: WaddleDee_159 Start: 106306, Stop: 106464, Start Num: 28
Candidate Starts for WaddleDee_159:
(11, 106261), (28, 106306),

Gene: Weasels2_176 Start: 96304, Stop: 96510, Start Num: 15
Candidate Starts for Weasels2_176:
(Start: 15 @96304 has 1 MA's),

Gene: Yappy_17 Start: 5650, Stop: 5847, Start Num: 19
Candidate Starts for Yappy_17:
(9, 5620), (Start: 19 @5650 has 1 MA's), (34, 5698), (38, 5716), (45, 5749), (48, 5776), (53, 5797), (59, 5821), (61, 5833),

Gene: Yecey3_72 Start: 41315, Stop: 41127, Start Num: 18
Candidate Starts for Yecey3_72:
(Start: 18 @41315 has 1 MA's), (30, 41282),