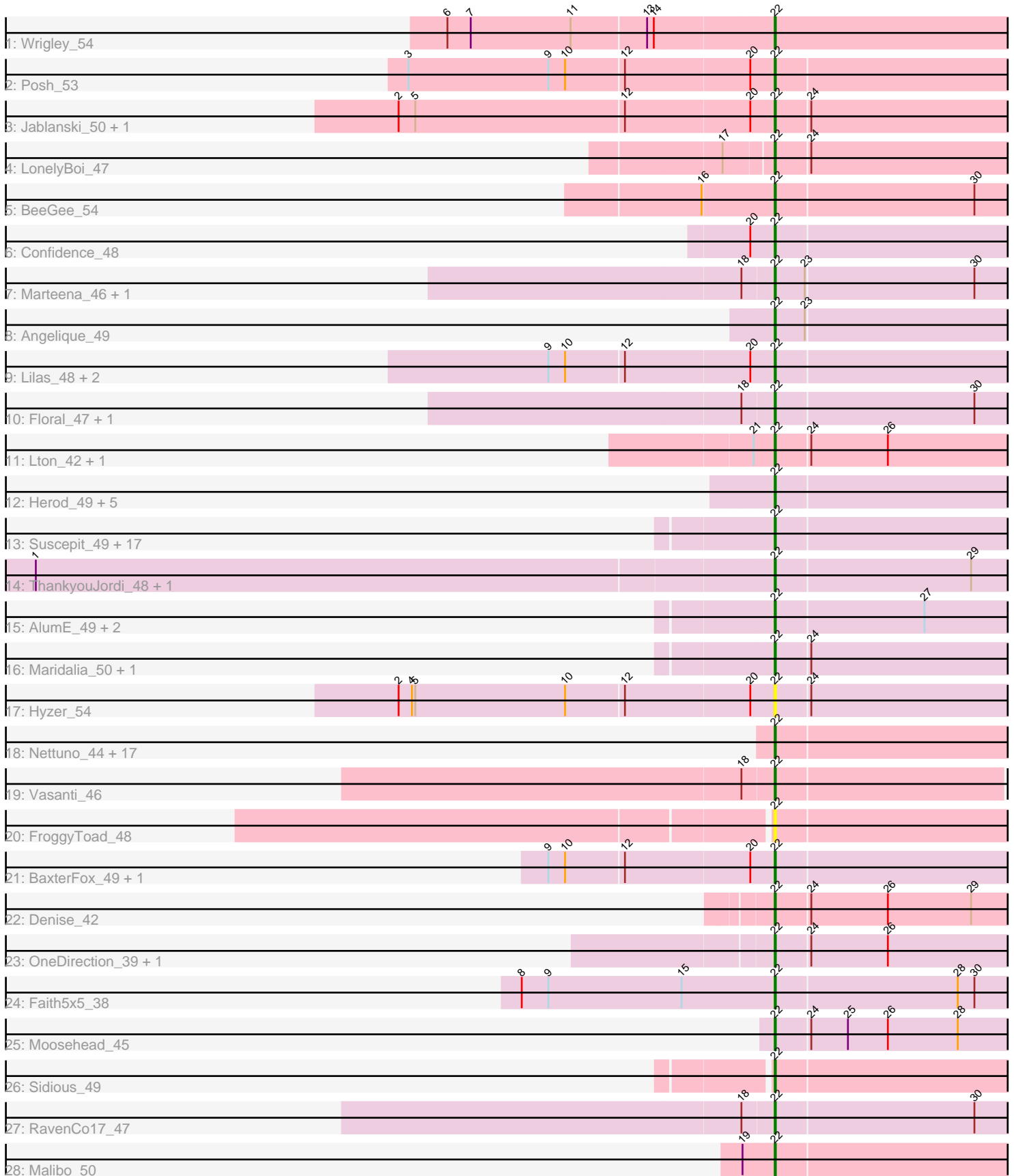


Pham 216098



Note: Tracks are now grouped by subcluster and scaled. Switching in subcluster is indicated by changes in track color. Track scale is now set by default to display the region 30 bp upstream of start 1 to 30 bp downstream of the last possible start. If this default region is judged to be packed too tightly with annotated starts, the track will be further scaled to only show that region of the ORF with annotated starts. This action will be indicated by adding "Zoomed" to the title. For starts, yellow indicates the location of called starts comprised solely of Glimmer/GeneMark auto-annotations, green indicates the location of called starts with at least 1 manual gene annotation.

Pham 216098 Report

This analysis was run 02/22/25 on database version 588.

Pham number 216098 has 79 members, 4 are drafts.

Phages represented in each track:

- Track 1 : Wrigley_54
- Track 2 : Posh_53
- Track 3 : Jablanski_50, Pytheas_50
- Track 4 : LonelyBoi_47
- Track 5 : BeeGee_54
- Track 6 : Confidence_48
- Track 7 : Marteena_46, EMsquaredA_47
- Track 8 : Angelique_49
- Track 9 : Lilas_48, Bradissa_46, EnalisNailo_45
- Track 10 : Floral_47, Pollux_49
- Track 11 : Lton_42, Lucky10_43
- Track 12 : Herod_49, Eviarto_50, TimTam_50, Hugley_46, Nymphadora_50, BatStarr_49
- Track 13 : Suscepit_49, Polly_46, EdnaMode_43, Eudoria_49, Yeet412_44, LordFarquaad_46, Trumpet_49, Attis_44, Tayonia_49, Neobush_49, Kita_50, Antonio_49, Pickett_42, Manasvini_50, Zameen_49, Zirinka_46, SoilAssassin_44, Bialota_47
- Track 14 : ThankyouJordi_48, WelcomeAyanna_48
- Track 15 : AlumE_49, BoyNamedSue_49, Agueybana_51
- Track 16 : Maridalia_50, Bunnybear_42
- Track 17 : Hyzer_54
- Track 18 : Nettuno_44, Lamberg_44, Ebert_50, GemG_48, Bosnia_50, JCole_46, Gizermo_48, TuertoX_48, Savage_48, Sahara_47, Sproutie_48, Bjanes7_45, Clap_48, Whiteclaw_48, Mocha12_48, Haley23_48, Cynthia_48, Matteo_41
- Track 19 : Vasanti_46
- Track 20 : FroggyToad_48
- Track 21 : BaxterFox_49, PantheRoc_48
- Track 22 : Denise_42
- Track 23 : OneDirection_39, Morkie_44
- Track 24 : Faith5x5_38
- Track 25 : Moosehead_45
- Track 26 : Sidious_49
- Track 27 : RavenCo17_47
- Track 28 : Malibo_50

Summary of Final Annotations (See graph section above for start numbers):

The start number called the most often in the published annotations is 22, it was called in 75 of the 75 non-draft genes in the pham.

Genes that call this "Most Annotated" start:

- Agueybana_51, AlumE_49, Angelique_49, Antonio_49, Attis_44, BatStarr_49, BaxterFox_49, BeeGee_54, Bialota_47, Bjanes7_45, Bosnia_50, BoyNamedSue_49, Bradissa_46, Bunnybear_42, Clap_48, Confidence_48, Cynthia_48, Denise_42, EMSquaredA_47, Ebert_50, EdnaMode_43, EnalisNailo_45, Eudoria_49, Eviarto_50, Faith5x5_38, Floral_47, FroggyToad_48, GemG_48, Gizermo_48, Haley23_48, Herod_49, Hugley_46, Hyzer_54, JCole_46, Jablanski_50, Kita_50, Lamberg_44, Lilas_48, LonelyBoi_47, LordFarquaad_46, Lton_42, Lucky10_43, Malibo_50, Manasvini_50, Maridalia_50, Marteena_46, Matteo_41, Mocha12_48, Moosehead_45, Morkie_44, Neobush_49, Nettuno_44, Nymphadora_50, OneDirection_39, PantheRoc_48, Pickett_42, Pollux_49, Polly_46, Posh_53, Pytheas_50, RavenCo17_47, Sahara_47, Savage_48, Sidious_49, SoilAssassin_44, Sproutie_48, Suscepit_49, Tayonia_49, ThankyouJordi_48, TimTam_50, Trumpet_49, TuertoX_48, Vasanti_46, WelcomeAyanna_48, Whiteclaw_48, Wrigley_54, Yeet412_44, Zameen_49, Zirinka_46,

Genes that have the "Most Annotated" start but do not call it:

-

Genes that do not have the "Most Annotated" start:

-

Summary by start number:

Start 22:

- Found in 79 of 79 (100.0%) of genes in pham
- Manual Annotations of this start: 75 of 75
- Called 100.0% of time when present
- Phage (with cluster) where this start called: Agueybana_51 (CZ1), AlumE_49 (CZ1), Angelique_49 (CY1), Antonio_49 (CZ1), Attis_44 (CZ2), BatStarr_49 (CZ1), BaxterFox_49 (CZ3), BeeGee_54 (CY), Bialota_47 (CZ1), Bjanes7_45 (CZ2), Bosnia_50 (CZ1), BoyNamedSue_49 (CZ1), Bradissa_46 (CY1), Bunnybear_42 (CZ), Clap_48 (CZ2), Confidence_48 (CY1), Cynthia_48 (CZ2), Denise_42 (CZ5), EMSquaredA_47 (CY1), Ebert_50 (CZ2), EdnaMode_43 (CZ2), EnalisNailo_45 (CY1), Eudoria_49 (CZ1), Eviarto_50 (CZ1), Faith5x5_38 (CZ6), Floral_47 (CY1), FroggyToad_48 (CZ2), GemG_48 (CZ2), Gizermo_48 (CZ2), Haley23_48 (CZ2), Herod_49 (CZ1), Hugley_46 (CZ1), Hyzer_54 (CZ1), JCole_46 (CZ2), Jablanski_50 (CY), Kita_50 (CZ1), Lamberg_44 (CZ2), Lilas_48 (CY1), LonelyBoi_47 (CY), LordFarquaad_46 (CZ2), Lton_42 (CZ), Lucky10_43 (DH), Malibo_50 (DW), Manasvini_50 (CZ1), Maridalia_50 (CZ1), Marteena_46 (CY1), Matteo_41 (CZ2), Mocha12_48 (CZ2), Moosehead_45 (CZ6), Morkie_44 (DH), Neobush_49 (CZ1), Nettuno_44 (CZ2), Nymphadora_50 (CZ1), OneDirection_39 (CZ6), PantheRoc_48 (CZ3), Pickett_42 (CZ2), Pollux_49 (CY1), Polly_46 (CZ1), Posh_53 (CY), Pytheas_50 (CY), RavenCo17_47 (CZ8), Sahara_47 (CZ2), Savage_48 (CZ2), Sidious_49 (CZ7), SoilAssassin_44 (CZ2), Sproutie_48 (CZ2), Suscepit_49 (CZ1), Tayonia_49 (CZ1), ThankyouJordi_48 (CZ1), TimTam_50 (CZ1), Trumpet_49 (CZ1), TuertoX_48 (CZ2), Vasanti_46 (CZ2), WelcomeAyanna_48 (CZ1), Whiteclaw_48

(CZ2), Wrigley_54 (CY), Yeet412_44 (CZ2), Zameen_49 (CZ1), Zirinka_46 (CZ1),

Summary by clusters:

There are 12 clusters represented in this pham: CZ7, CY1, DH, CZ2, CZ3, CZ1, CZ6, CZ8, CZ5, CZ, CY, DW,

Info for manual annotations of cluster CY:

- Start number 22 was manually annotated 6 times for cluster CY.

Info for manual annotations of cluster CY1:

- Start number 22 was manually annotated 9 times for cluster CY1.

Info for manual annotations of cluster CZ:

- Start number 22 was manually annotated 2 times for cluster CZ.

Info for manual annotations of cluster CZ1:

- Start number 22 was manually annotated 24 times for cluster CZ1.

Info for manual annotations of cluster CZ2:

- Start number 22 was manually annotated 23 times for cluster CZ2.

Info for manual annotations of cluster CZ3:

- Start number 22 was manually annotated 2 times for cluster CZ3.

Info for manual annotations of cluster CZ5:

- Start number 22 was manually annotated 1 time for cluster CZ5.

Info for manual annotations of cluster CZ6:

- Start number 22 was manually annotated 3 times for cluster CZ6.

Info for manual annotations of cluster CZ7:

- Start number 22 was manually annotated 1 time for cluster CZ7.

Info for manual annotations of cluster CZ8:

- Start number 22 was manually annotated 1 time for cluster CZ8.

Info for manual annotations of cluster DH:

- Start number 22 was manually annotated 2 times for cluster DH.

Info for manual annotations of cluster DW:

- Start number 22 was manually annotated 1 time for cluster DW.

Gene Information:

Gene: Agueybana_51 Start: 38410, Stop: 38637, Start Num: 22

Candidate Starts for Agueybana_51:

(Start: 22 @38410 has 75 MA's), (27, 38542),

Gene: AlumE_49 Start: 36910, Stop: 37137, Start Num: 22

Candidate Starts for AlumE_49:

(Start: 22 @36910 has 75 MA's), (27, 37042),

Gene: Angelique_49 Start: 38125, Stop: 38352, Start Num: 22

Candidate Starts for Angelique_49:

(Start: 22 @38125 has 75 MA's), (23, 38152),

Gene: Antonio_49 Start: 36183, Stop: 36410, Start Num: 22

Candidate Starts for Antonio_49:

(Start: 22 @36183 has 75 MA's),

Gene: Attis_44 Start: 33316, Stop: 33543, Start Num: 22

Candidate Starts for Attis_44:

(Start: 22 @33316 has 75 MA's),

Gene: BatStarr_49 Start: 38153, Stop: 38380, Start Num: 22

Candidate Starts for BatStarr_49:

(Start: 22 @38153 has 75 MA's),

Gene: BaxterFox_49 Start: 37705, Stop: 37932, Start Num: 22

Candidate Starts for BaxterFox_49:

(9, 37507), (10, 37522), (12, 37573), (20, 37684), (Start: 22 @37705 has 75 MA's),

Gene: BeeGee_54 Start: 37637, Stop: 37867, Start Num: 22

Candidate Starts for BeeGee_54:

(16, 37574), (Start: 22 @37637 has 75 MA's), (30, 37814),

Gene: Bialota_47 Start: 36815, Stop: 37042, Start Num: 22

Candidate Starts for Bialota_47:

(Start: 22 @36815 has 75 MA's),

Gene: Bjaner7_45 Start: 33494, Stop: 33718, Start Num: 22

Candidate Starts for Bjaner7_45:

(Start: 22 @33494 has 75 MA's),

Gene: Bosnia_50 Start: 39858, Stop: 40082, Start Num: 22

Candidate Starts for Bosnia_50:

(Start: 22 @39858 has 75 MA's),

Gene: BoyNamedSue_49 Start: 36910, Stop: 37137, Start Num: 22

Candidate Starts for BoyNamedSue_49:

(Start: 22 @36910 has 75 MA's), (27, 37042),

Gene: Bradissa_46 Start: 37251, Stop: 37478, Start Num: 22

Candidate Starts for Bradissa_46:

(9, 37053), (10, 37068), (12, 37119), (20, 37230), (Start: 22 @37251 has 75 MA's),

Gene: Bunnybear_42 Start: 34583, Stop: 34810, Start Num: 22

Candidate Starts for Bunnybear_42:

(Start: 22 @34583 has 75 MA's), (24, 34613),

Gene: Clap_48 Start: 33673, Stop: 33897, Start Num: 22

Candidate Starts for Clap_48:

(Start: 22 @33673 has 75 MA's),

Gene: Confidence_48 Start: 35142, Stop: 35369, Start Num: 22
Candidate Starts for Confidence_48:
(20, 35121), (Start: 22 @35142 has 75 MA's),

Gene: Cynthia_48 Start: 33671, Stop: 33895, Start Num: 22
Candidate Starts for Cynthia_48:
(Start: 22 @33671 has 75 MA's),

Gene: Denise_42 Start: 31822, Stop: 32046, Start Num: 22
Candidate Starts for Denise_42:
(Start: 22 @31822 has 75 MA's), (24, 31852), (26, 31921), (29, 31996),

Gene: EMSquaredA_47 Start: 36058, Stop: 36288, Start Num: 22
Candidate Starts for EMSquaredA_47:
(18, 36031), (Start: 22 @36058 has 75 MA's), (23, 36085), (30, 36235),

Gene: Ebert_50 Start: 33597, Stop: 33821, Start Num: 22
Candidate Starts for Ebert_50:
(Start: 22 @33597 has 75 MA's),

Gene: EdnaMode_43 Start: 32004, Stop: 32231, Start Num: 22
Candidate Starts for EdnaMode_43:
(Start: 22 @32004 has 75 MA's),

Gene: EnalisNailo_45 Start: 36785, Stop: 37012, Start Num: 22
Candidate Starts for EnalisNailo_45:
(9, 36587), (10, 36602), (12, 36653), (20, 36764), (Start: 22 @36785 has 75 MA's),

Gene: Eudoria_49 Start: 36183, Stop: 36410, Start Num: 22
Candidate Starts for Eudoria_49:
(Start: 22 @36183 has 75 MA's),

Gene: Eviarto_50 Start: 38128, Stop: 38355, Start Num: 22
Candidate Starts for Eviarto_50:
(Start: 22 @38128 has 75 MA's),

Gene: Faith5x5_38 Start: 29451, Stop: 29675, Start Num: 22
Candidate Starts for Faith5x5_38:
(8, 29223), (9, 29247), (15, 29367), (Start: 22 @29451 has 75 MA's), (28, 29613), (30, 29628),

Gene: Floral_47 Start: 37542, Stop: 37772, Start Num: 22
Candidate Starts for Floral_47:
(18, 37515), (Start: 22 @37542 has 75 MA's), (30, 37719),

Gene: FroggyToad_48 Start: 34354, Stop: 34581, Start Num: 22
Candidate Starts for FroggyToad_48:
(Start: 22 @34354 has 75 MA's),

Gene: GemG_48 Start: 33677, Stop: 33901, Start Num: 22
Candidate Starts for GemG_48:
(Start: 22 @33677 has 75 MA's),

Gene: Gizermo_48 Start: 33673, Stop: 33897, Start Num: 22
Candidate Starts for Gizermo_48:
(Start: 22 @33673 has 75 MA's),

Gene: Haley23_48 Start: 33673, Stop: 33897, Start Num: 22
Candidate Starts for Haley23_48:
(Start: 22 @33673 has 75 MA's),

Gene: Herod_49 Start: 38153, Stop: 38380, Start Num: 22
Candidate Starts for Herod_49:
(Start: 22 @38153 has 75 MA's),

Gene: Hugley_46 Start: 38152, Stop: 38379, Start Num: 22
Candidate Starts for Hugley_46:
(Start: 22 @38152 has 75 MA's),

Gene: Hyzer_54 Start: 39099, Stop: 39326, Start Num: 22
Candidate Starts for Hyzer_54:
(2, 38766), (4, 38778), (5, 38781), (10, 38916), (12, 38967), (20, 39078), (Start: 22 @39099 has 75 MA's), (24, 39129),

Gene: JCole_46 Start: 32691, Stop: 32915, Start Num: 22
Candidate Starts for JCole_46:
(Start: 22 @32691 has 75 MA's),

Gene: Jablanski_50 Start: 39144, Stop: 39371, Start Num: 22
Candidate Starts for Jablanski_50:
(2, 38811), (5, 38826), (12, 39012), (20, 39123), (Start: 22 @39144 has 75 MA's), (24, 39174),

Gene: Kita_50 Start: 36192, Stop: 36419, Start Num: 22
Candidate Starts for Kita_50:
(Start: 22 @36192 has 75 MA's),

Gene: Lamberg_44 Start: 32182, Stop: 32406, Start Num: 22
Candidate Starts for Lamberg_44:
(Start: 22 @32182 has 75 MA's),

Gene: Lilas_48 Start: 38496, Stop: 38723, Start Num: 22
Candidate Starts for Lilas_48:
(9, 38298), (10, 38313), (12, 38364), (20, 38475), (Start: 22 @38496 has 75 MA's),

Gene: LonelyBoi_47 Start: 38656, Stop: 38883, Start Num: 22
Candidate Starts for LonelyBoi_47:
(17, 38617), (Start: 22 @38656 has 75 MA's), (24, 38686),

Gene: LordFarquaad_46 Start: 33297, Stop: 33524, Start Num: 22
Candidate Starts for LordFarquaad_46:
(Start: 22 @33297 has 75 MA's),

Gene: Lton_42 Start: 29506, Stop: 29730, Start Num: 22
Candidate Starts for Lton_42:
(21, 29488), (Start: 22 @29506 has 75 MA's), (24, 29536), (26, 29605),

Gene: Lucky10_43 Start: 32224, Stop: 32448, Start Num: 22
Candidate Starts for Lucky10_43:
(21, 32206), (Start: 22 @32224 has 75 MA's), (24, 32254), (26, 32323),

Gene: Malibo_50 Start: 36835, Stop: 37056, Start Num: 22
Candidate Starts for Malibo_50:
(19, 36808), (Start: 22 @36835 has 75 MA's),

Gene: Manasvini_50 Start: 36207, Stop: 36434, Start Num: 22
Candidate Starts for Manasvini_50:
(Start: 22 @36207 has 75 MA's),

Gene: Maridalia_50 Start: 36329, Stop: 36556, Start Num: 22
Candidate Starts for Maridalia_50:
(Start: 22 @36329 has 75 MA's), (24, 36359),

Gene: Marteena_46 Start: 36058, Stop: 36288, Start Num: 22
Candidate Starts for Marteena_46:
(18, 36031), (Start: 22 @36058 has 75 MA's), (23, 36085), (30, 36235),

Gene: Matteo_41 Start: 31224, Stop: 31448, Start Num: 22
Candidate Starts for Matteo_41:
(Start: 22 @31224 has 75 MA's),

Gene: Mocha12_48 Start: 33673, Stop: 33897, Start Num: 22
Candidate Starts for Mocha12_48:
(Start: 22 @33673 has 75 MA's),

Gene: Moosehead_45 Start: 30439, Stop: 30663, Start Num: 22
Candidate Starts for Moosehead_45:
(Start: 22 @30439 has 75 MA's), (24, 30469), (25, 30502), (26, 30538), (28, 30601),

Gene: Morkie_44 Start: 31328, Stop: 31552, Start Num: 22
Candidate Starts for Morkie_44:
(Start: 22 @31328 has 75 MA's), (24, 31358), (26, 31427),

Gene: Neobush_49 Start: 36177, Stop: 36404, Start Num: 22
Candidate Starts for Neobush_49:
(Start: 22 @36177 has 75 MA's),

Gene: Nettuno_44 Start: 32182, Stop: 32406, Start Num: 22
Candidate Starts for Nettuno_44:
(Start: 22 @32182 has 75 MA's),

Gene: Nymphadora_50 Start: 38152, Stop: 38379, Start Num: 22
Candidate Starts for Nymphadora_50:
(Start: 22 @38152 has 75 MA's),

Gene: OneDirection_39 Start: 28942, Stop: 29166, Start Num: 22
Candidate Starts for OneDirection_39:
(Start: 22 @28942 has 75 MA's), (24, 28972), (26, 29041),

Gene: PantheRoc_48 Start: 36680, Stop: 36907, Start Num: 22

Candidate Starts for PantheRoc_48:
(9, 36482), (10, 36497), (12, 36548), (20, 36659), (Start: 22 @36680 has 75 MA's),

Gene: Pickett_42 Start: 30480, Stop: 30707, Start Num: 22
Candidate Starts for Pickett_42:
(Start: 22 @30480 has 75 MA's),

Gene: Pollux_49 Start: 37542, Stop: 37772, Start Num: 22
Candidate Starts for Pollux_49:
(18, 37515), (Start: 22 @37542 has 75 MA's), (30, 37719),

Gene: Polly_46 Start: 35626, Stop: 35853, Start Num: 22
Candidate Starts for Polly_46:
(Start: 22 @35626 has 75 MA's),

Gene: Posh_53 Start: 38901, Stop: 39128, Start Num: 22
Candidate Starts for Posh_53:
(3, 38577), (9, 38703), (10, 38718), (12, 38769), (20, 38880), (Start: 22 @38901 has 75 MA's),

Gene: Pytheas_50 Start: 39143, Stop: 39370, Start Num: 22
Candidate Starts for Pytheas_50:
(2, 38810), (5, 38825), (12, 39011), (20, 39122), (Start: 22 @39143 has 75 MA's), (24, 39173),

Gene: RavenCo17_47 Start: 36363, Stop: 36593, Start Num: 22
Candidate Starts for RavenCo17_47:
(18, 36336), (Start: 22 @36363 has 75 MA's), (30, 36540),

Gene: Sahara_47 Start: 33420, Stop: 33644, Start Num: 22
Candidate Starts for Sahara_47:
(Start: 22 @33420 has 75 MA's),

Gene: Savage_48 Start: 33673, Stop: 33897, Start Num: 22
Candidate Starts for Savage_48:
(Start: 22 @33673 has 75 MA's),

Gene: Sidious_49 Start: 37507, Stop: 37734, Start Num: 22
Candidate Starts for Sidious_49:
(Start: 22 @37507 has 75 MA's),

Gene: SoilAssassin_44 Start: 33315, Stop: 33542, Start Num: 22
Candidate Starts for SoilAssassin_44:
(Start: 22 @33315 has 75 MA's),

Gene: Sproutie_48 Start: 33673, Stop: 33897, Start Num: 22
Candidate Starts for Sproutie_48:
(Start: 22 @33673 has 75 MA's),

Gene: Suscepit_49 Start: 36184, Stop: 36411, Start Num: 22
Candidate Starts for Suscepit_49:
(Start: 22 @36184 has 75 MA's),

Gene: Tayonia_49 Start: 36183, Stop: 36410, Start Num: 22
Candidate Starts for Tayonia_49:

(Start: 22 @36183 has 75 MA's),

Gene: ThankyouJordi_48 Start: 38028, Stop: 38255, Start Num: 22

Candidate Starts for ThankyouJordi_48:

(1, 37374), (Start: 22 @38028 has 75 MA's), (29, 38202),

Gene: TimTam_50 Start: 38152, Stop: 38379, Start Num: 22

Candidate Starts for TimTam_50:

(Start: 22 @38152 has 75 MA's),

Gene: Trumpet_49 Start: 36184, Stop: 36411, Start Num: 22

Candidate Starts for Trumpet_49:

(Start: 22 @36184 has 75 MA's),

Gene: TuertoX_48 Start: 33673, Stop: 33897, Start Num: 22

Candidate Starts for TuertoX_48:

(Start: 22 @33673 has 75 MA's),

Gene: Vasanti_46 Start: 32681, Stop: 32905, Start Num: 22

Candidate Starts for Vasanti_46:

(18, 32654), (Start: 22 @32681 has 75 MA's),

Gene: WelcomeAyanna_48 Start: 38175, Stop: 38402, Start Num: 22

Candidate Starts for WelcomeAyanna_48:

(1, 37521), (Start: 22 @38175 has 75 MA's), (29, 38349),

Gene: Whiteclaw_48 Start: 33673, Stop: 33897, Start Num: 22

Candidate Starts for Whiteclaw_48:

(Start: 22 @33673 has 75 MA's),

Gene: Wrigley_54 Start: 38058, Stop: 38288, Start Num: 22

Candidate Starts for Wrigley_54:

(6, 37773), (7, 37794), (11, 37884), (13, 37950), (14, 37956), (Start: 22 @38058 has 75 MA's),

Gene: Yeet412_44 Start: 33316, Stop: 33543, Start Num: 22

Candidate Starts for Yeet412_44:

(Start: 22 @33316 has 75 MA's),

Gene: Zameen_49 Start: 36183, Stop: 36410, Start Num: 22

Candidate Starts for Zameen_49:

(Start: 22 @36183 has 75 MA's),

Gene: Zirinka_46 Start: 36803, Stop: 37030, Start Num: 22

Candidate Starts for Zirinka_46:

(Start: 22 @36803 has 75 MA's),