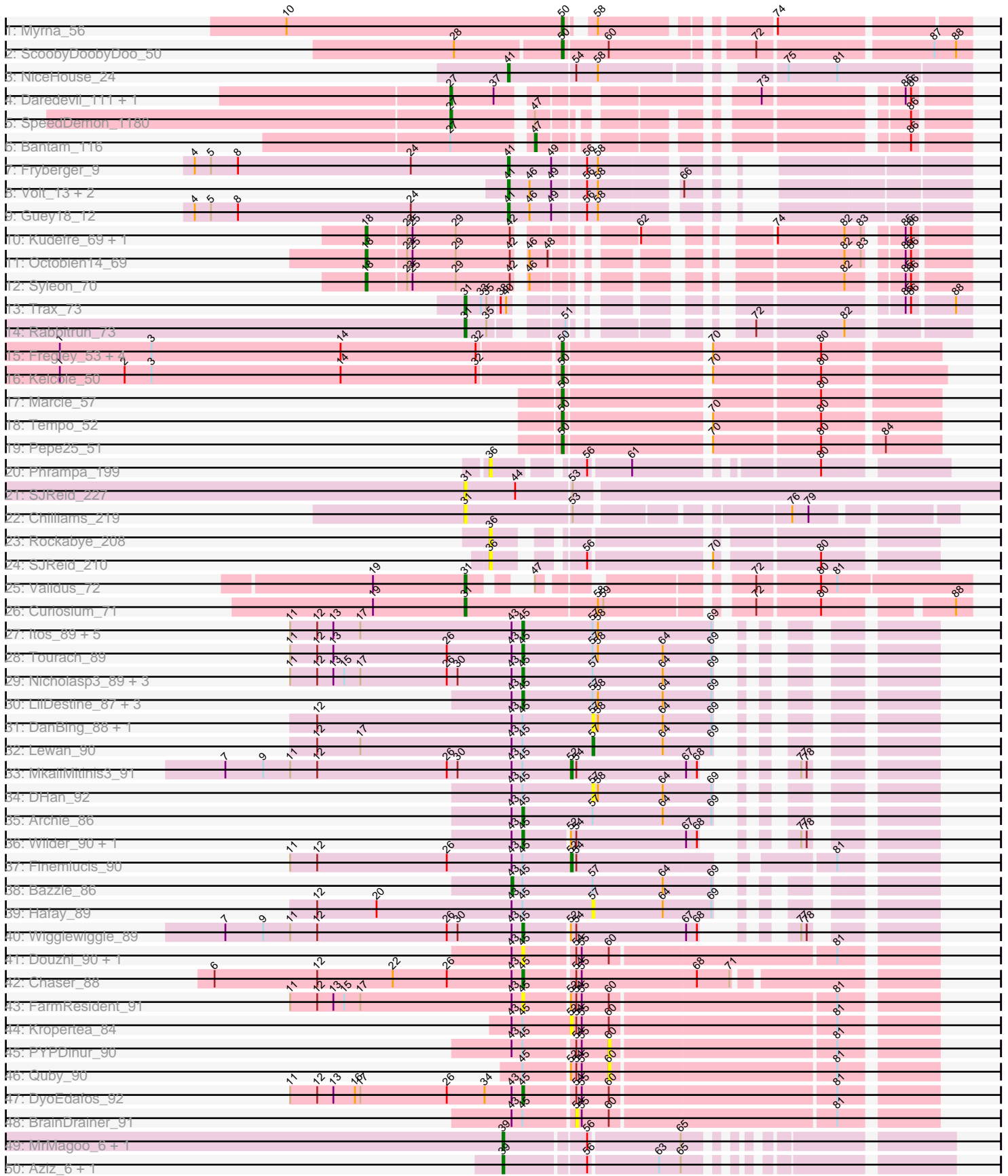


Pham 216105



Note: Tracks are now grouped by subcluster and scaled. Switching in subcluster is indicated by changes in track color. Track scale is now set by default to display the region 30 bp upstream of start 1 to 30 bp downstream of the last possible start. If this default region is judged to be packed too tightly with annotated starts, the track will be further scaled to only show that region of the ORF with annotated starts. This action will be indicated by adding "Zoomed" to the title. For starts, yellow indicates the location of called starts comprised solely of Glimmer/GeneMark auto-annotations, green indicates the location of called starts with at least 1 manual gene annotation.

Pham 216105 Report

This analysis was run 02/22/25 on database version 588.

Pham number 216105 has 77 members, 20 are drafts.

Phages represented in each track:

- Track 1 : Myrna_56
- Track 2 : ScoobyDoobyDoo_50
- Track 3 : NiceHouse_24
- Track 4 : Daredevil_111, Towmatter_114
- Track 5 : SpeedDemon_1180
- Track 6 : Bantam_116
- Track 7 : Fryberger_9
- Track 8 : Volt_13, Ronaldo_13, Ziko_14
- Track 9 : Guey18_12
- Track 10 : Kudrefre_69, Sephiroth_68
- Track 11 : Octobien14_69
- Track 12 : Syleon_70
- Track 13 : Trax_73
- Track 14 : Rabbitrun_73
- Track 15 : Fregley_53, RobinRose_54, OneinaGillian_52, CandC_51, Romm_54
- Track 16 : Kelcole_50
- Track 17 : Marcie_57
- Track 18 : Tempo_52
- Track 19 : Pepe25_51
- Track 20 : Phrampa_199
- Track 21 : SJReid_227
- Track 22 : Chilliams_219
- Track 23 : Rockabye_208
- Track 24 : SJReid_210
- Track 25 : Validus_72
- Track 26 : Curiosium_71
- Track 27 : Itos_89, Faith1_89, Crossroads_89, Loadrie_88, Gabriela_89, Zakai_90
- Track 28 : Tourach_89
- Track 29 : Nicholasp3_89, Rumpelstiltskin_85, Gardann_89, Underpass_79
- Track 30 : LilDestine_87, ZhongYanYuan_86, GuuelaD_86, Douge_90
- Track 31 : DanBing_88, Baoshan_86
- Track 32 : Lewan_90
- Track 33 : MkaliMitinis3_91
- Track 34 : DHan_92
- Track 35 : Archie_86
- Track 36 : Wilder_90, Kahlid_88
- Track 37 : Finemlucis_90

- Track 38 : Bazzle_86
- Track 39 : Hafay_89
- Track 40 : Wigglewiggle_89
- Track 41 : Douzhi_90, Sheng711_91
- Track 42 : Chaser_88
- Track 43 : FarmResident_91
- Track 44 : Kropertea_84
- Track 45 : PYPDinur_90
- Track 46 : Quby_90
- Track 47 : DyoEdafos_92
- Track 48 : BrainDrainer_91
- Track 49 : MrMagoo_6, GardenSalsa_6
- Track 50 : Aziz_6, GenevaB15_6
- Track 51 : Rey_5
- Track 52 : Estes_6
- Track 53 : Nanosmite_5

Summary of Final Annotations (See graph section above for start numbers):

The start number called the most often in the published annotations is 45, it was called in 19 of the 57 non-draft genes in the pham.

Genes that call this "Most Annotated" start:

- Archie_86, Chaser_88, Crossroads_89, Douge_90, Douzhi_90, DyoEdafos_92, Faith1_89, FarmResident_91, Gabriela_89, Gardann_89, GuuelaD_86, Itos_89, Kahlid_88, LilDestine_87, Loadrie_88, Nicholasp3_89, Rumpelstiltskin_85, Sheng711_91, Tourach_89, Underpass_79, Wigglewiggle_89, Wilder_90, Zakai_90, ZhongYanYuan_86,

Genes that have the "Most Annotated" start but do not call it:

- Baoshan_86, Bazzle_86, BrainDrainer_91, DHan_92, DanBing_88, Finemlucis_90, Hafay_89, Kropertea_84, Lewan_90, MkaliMitinis3_91, PYPDinur_90, Quby_90,

Genes that do not have the "Most Annotated" start:

- Aziz_6, Bantam_116, CandC_51, Chilliams_219, Curiosium_71, Daredevil_111, Estes_6, Fregley_53, Fryberger_9, GardenSalsa_6, GenevaB15_6, Guey18_12, Kelcole_50, Kudrefre_69, Marcie_57, MrMagoo_6, Myrna_56, Nanosmite_5, NiceHouse_24, Octobien14_69, OneinaGillian_52, Pepe25_51, Phrampa_199, Rabbitrun_73, Rey_5, RobinRose_54, Rockabye_208, Romm_54, Ronaldo_13, SJReid_210, SJReid_227, ScoobyDoobyDoo_50, Sephiroth_68, SpeedDemon_1180, Syleon_70, Tempo_52, Towmatter_114, Trax_73, Validus_72, Volt_13, Ziko_14,

Summary by start number:

Start 18:

- Found in 4 of 77 (5.2%) of genes in pham
- Manual Annotations of this start: 4 of 57
- Called 100.0% of time when present
- Phage (with cluster) where this start called: Kudrefre_69 (DU1), Octobien14_69 (DU1), Sephiroth_68 (DU1), Syleon_70 (DU1),

Start 27:

- Found in 4 of 77 (5.2%) of genes in pham
- Manual Annotations of this start: 2 of 57
- Called 75.0% of time when present
- Phage (with cluster) where this start called: Daredevil_111 (DL), SpeedDemon_1180 (DL), Towmatter_114 (DL),

Start 31:

- Found in 9 of 77 (11.7%) of genes in pham
- Manual Annotations of this start: 4 of 57
- Called 66.7% of time when present
- Phage (with cluster) where this start called: Chilliams_219 (FC), Curiosium_71 (K1), Rabbitrun_73 (DU2), SJReid_227 (FC), Trax_73 (DU2), Validus_72 (K1),

Start 36:

- Found in 3 of 77 (3.9%) of genes in pham
- No Manual Annotations of this start.
- Called 100.0% of time when present
- Phage (with cluster) where this start called: Phrampa_199 (FC), Rockabye_208 (FC), SJReid_210 (FC),

Start 39:

- Found in 7 of 77 (9.1%) of genes in pham
- Manual Annotations of this start: 6 of 57
- Called 85.7% of time when present
- Phage (with cluster) where this start called: Aziz_6 (M2), Estes_6 (M2), GardenSalsa_6 (M2), GenevaB15_6 (M2), MrMagoo_6 (M2), Nanosmite_5 (M3),

Start 41:

- Found in 6 of 77 (7.8%) of genes in pham
- Manual Annotations of this start: 6 of 57
- Called 100.0% of time when present
- Phage (with cluster) where this start called: Fryberger_9 (DP), Guey18_12 (DP), NiceHouse_24 (CE), Ronaldo_13 (DP), Volt_13 (DP), Ziko_14 (DP),

Start 43:

- Found in 35 of 77 (45.5%) of genes in pham
- Manual Annotations of this start: 1 of 57
- Called 2.9% of time when present
- Phage (with cluster) where this start called: Bazzle_86 (L2),

Start 45:

- Found in 36 of 77 (46.8%) of genes in pham
- Manual Annotations of this start: 19 of 57
- Called 66.7% of time when present
- Phage (with cluster) where this start called: Archie_86 (L2), Chaser_88 (L4), Crossroads_89 (L2), Douge_90 (L4), Douzhi_90 (L4), DyoEdafos_92 (L4), Faith1_89 (L2), FarmResident_91 (L4), Gabriela_89 (L2), Gardann_89 (L2), GuuelaD_86 (L2), Itos_89 (L2), Kahlid_88 (L2), LilDestine_87 (L2), Loadrie_88 (L2), Nicholasp3_89 (L2), Rumpelstiltskin_85 (L2), Sheng711_91 (L4), Tourach_89 (L2), Underpass_79 (L2), Wigglegiggle_89 (L2), Wilder_90 (L2), Zakai_90 (L2), ZhongYanYuan_86 (L2),

Start 47:

- Found in 3 of 77 (3.9%) of genes in pham
- Manual Annotations of this start: 1 of 57
- Called 33.3% of time when present
- Phage (with cluster) where this start called: Bantam_116 (DL),

Start 50:

- Found in 12 of 77 (15.6%) of genes in pham
- Manual Annotations of this start: 11 of 57
- Called 100.0% of time when present
- Phage (with cluster) where this start called: CandC_51 (EG), Fregley_53 (EG), Kelcole_50 (EG), Marcie_57 (EG), Myrna_56 (C2), OneinaGillian_52 (EG), Pepe25_51 (EG), Rey_5 (M2), RobinRose_54 (EG), Romm_54 (EG), ScoobyDoobyDoo_50 (C2), Tempo_52 (EG),

Start 52:

- Found in 8 of 77 (10.4%) of genes in pham
- Manual Annotations of this start: 2 of 57
- Called 37.5% of time when present
- Phage (with cluster) where this start called: Finemlucis_90 (L2), Kropertea_84 (L4), MkaliMitinis3_91 (L2),

Start 54:

- Found in 15 of 77 (19.5%) of genes in pham
- No Manual Annotations of this start.
- Called 6.7% of time when present
- Phage (with cluster) where this start called: BrainDrainer_91 (L4),

Start 57:

- Found in 22 of 77 (28.6%) of genes in pham
- Manual Annotations of this start: 1 of 57
- Called 22.7% of time when present
- Phage (with cluster) where this start called: Baoshan_86 (L2), DHan_92 (L2), DanBing_88 (L2), Hafay_89 (L2), Lewan_90 (L2),

Start 60:

- Found in 10 of 77 (13.0%) of genes in pham
- No Manual Annotations of this start.
- Called 20.0% of time when present
- Phage (with cluster) where this start called: PYPDinur_90 (L4), Quby_90 (L4),

Summary by clusters:

There are 13 clusters represented in this pham: DL, EG, M2, L4, CE, K1, FC, L2, M3, C2, DU1, DU2, DP,

Info for manual annotations of cluster C2:

- Start number 50 was manually annotated 2 times for cluster C2.

Info for manual annotations of cluster CE:

- Start number 41 was manually annotated 1 time for cluster CE.

Info for manual annotations of cluster DL:

- Start number 27 was manually annotated 2 times for cluster DL.
- Start number 47 was manually annotated 1 time for cluster DL.

Info for manual annotations of cluster DP:

- Start number 41 was manually annotated 5 times for cluster DP.

Info for manual annotations of cluster DU1:

- Start number 18 was manually annotated 4 times for cluster DU1.

Info for manual annotations of cluster DU2:

- Start number 31 was manually annotated 2 times for cluster DU2.

Info for manual annotations of cluster EG:

- Start number 50 was manually annotated 8 times for cluster EG.

Info for manual annotations of cluster K1:

- Start number 31 was manually annotated 2 times for cluster K1.

Info for manual annotations of cluster L2:

- Start number 43 was manually annotated 1 time for cluster L2.
- Start number 45 was manually annotated 16 times for cluster L2.
- Start number 52 was manually annotated 2 times for cluster L2.
- Start number 57 was manually annotated 1 time for cluster L2.

Info for manual annotations of cluster L4:

- Start number 45 was manually annotated 3 times for cluster L4.

Info for manual annotations of cluster M2:

- Start number 39 was manually annotated 5 times for cluster M2.
- Start number 50 was manually annotated 1 time for cluster M2.

Info for manual annotations of cluster M3:

- Start number 39 was manually annotated 1 time for cluster M3.

Gene Information:

Gene: Archie_86 Start: 57063, Stop: 57242, Start Num: 45

Candidate Starts for Archie_86:

(Start: 43 @57057 has 1 MA's), (Start: 45 @57063 has 19 MA's), (Start: 57 @57102 has 1 MA's), (64, 57141), (69, 57168),

Gene: Aziz_6 Start: 2394, Stop: 2188, Start Num: 39

Candidate Starts for Aziz_6:

(Start: 39 @2394 has 6 MA's), (56, 2352), (63, 2316), (65, 2304),

Gene: Bantam_116 Start: 73048, Stop: 73236, Start Num: 47

Candidate Starts for Bantam_116:

(Start: 27 @73009 has 2 MA's), (Start: 47 @73048 has 1 MA's), (86, 73207),

Gene: Baoshan_86 Start: 57756, Stop: 57896, Start Num: 57

Candidate Starts for Baoshan_86:

(12, 57603), (Start: 43 @57711 has 1 MA's), (Start: 45 @57717 has 19 MA's), (Start: 57 @57756 has 1 MA's), (58, 57759), (64, 57795), (69, 57822),

Gene: Bazzle_86 Start: 57613, Stop: 57798, Start Num: 43

Candidate Starts for Bazzle_86:

(Start: 43 @57613 has 1 MA's), (Start: 45 @57619 has 19 MA's), (Start: 57 @57658 has 1 MA's), (64, 57697), (69, 57724),

Gene: BrainDrainer_91 Start: 57339, Stop: 57524, Start Num: 54

Candidate Starts for BrainDrainer_91:

(Start: 43 @57306 has 1 MA's), (Start: 45 @57312 has 19 MA's), (54, 57339), (55, 57342), (60, 57357), (81, 57477),

Gene: CandC_51 Start: 36309, Stop: 36118, Start Num: 50

Candidate Starts for CandC_51:

(1, 36582), (3, 36531), (14, 36426), (32, 36351), (Start: 50 @36309 has 11 MA's), (70, 36234), (80, 36177),

Gene: Chaser_88 Start: 56443, Stop: 56652, Start Num: 45

Candidate Starts for Chaser_88:

(6, 56272), (12, 56329), (22, 56371), (26, 56401), (Start: 43 @56437 has 1 MA's), (Start: 45 @56443 has 19 MA's), (54, 56470), (55, 56473), (68, 56536), (71, 56554),

Gene: Chilliams_219 Start: 144486, Stop: 144719, Start Num: 31

Candidate Starts for Chilliams_219:

(Start: 31 @144486 has 4 MA's), (53, 144543), (76, 144642), (79, 144651),

Gene: Crossroads_89 Start: 57560, Stop: 57739, Start Num: 45

Candidate Starts for Crossroads_89:

(11, 57431), (12, 57446), (13, 57455), (17, 57470), (Start: 43 @57554 has 1 MA's), (Start: 45 @57560 has 19 MA's), (Start: 57 @57599 has 1 MA's), (58, 57602), (69, 57665),

Gene: Curiosium_71 Start: 43377, Stop: 43622, Start Num: 31

Candidate Starts for Curiosium_71:

(19, 43326), (Start: 31 @43377 has 4 MA's), (58, 43449), (59, 43452), (72, 43521), (80, 43554), (88, 43614),

Gene: DHan_92 Start: 57819, Stop: 57959, Start Num: 57

Candidate Starts for DHan_92:

(Start: 43 @57774 has 1 MA's), (Start: 45 @57780 has 19 MA's), (Start: 57 @57819 has 1 MA's), (58, 57822), (64, 57858), (69, 57885),

Gene: DanBing_88 Start: 57317, Stop: 57457, Start Num: 57

Candidate Starts for DanBing_88:

(12, 57164), (Start: 43 @57272 has 1 MA's), (Start: 45 @57278 has 19 MA's), (Start: 57 @57317 has 1 MA's), (58, 57320), (64, 57356), (69, 57383),

Gene: Daredevil_111 Start: 69987, Stop: 70223, Start Num: 27

Candidate Starts for Daredevil_111:

(Start: 27 @69987 has 2 MA's), (37, 70011), (73, 70125), (85, 70191), (86, 70194),

Gene: Douge_90 Start: 56768, Stop: 56947, Start Num: 45

Candidate Starts for Douge_90:

(Start: 43 @56762 has 1 MA's), (Start: 45 @56768 has 19 MA's), (Start: 57 @56807 has 1 MA's), (58, 56810), (64, 56846), (69, 56873),

Gene: Douzhi_90 Start: 57001, Stop: 57213, Start Num: 45

Candidate Starts for Douzhi_90:

(Start: 43 @56995 has 1 MA's), (Start: 45 @57001 has 19 MA's), (54, 57028), (55, 57031), (60, 57046), (81, 57166),

Gene: DyoEdafos_92 Start: 57153, Stop: 57365, Start Num: 45

Candidate Starts for DyoEdafos_92:

(11, 57024), (12, 57039), (13, 57048), (16, 57060), (17, 57063), (26, 57111), (34, 57132), (Start: 43 @57147 has 1 MA's), (Start: 45 @57153 has 19 MA's), (54, 57180), (55, 57183), (60, 57198), (81, 57318),

Gene: Estes_6 Start: 2402, Stop: 2196, Start Num: 39

Candidate Starts for Estes_6:

(21, 2465), (Start: 31 @2423 has 4 MA's), (Start: 39 @2402 has 6 MA's), (56, 2360), (60, 2351), (65, 2312),

Gene: Faith1_89 Start: 57485, Stop: 57664, Start Num: 45

Candidate Starts for Faith1_89:

(11, 57356), (12, 57371), (13, 57380), (17, 57395), (Start: 43 @57479 has 1 MA's), (Start: 45 @57485 has 19 MA's), (Start: 57 @57524 has 1 MA's), (58, 57527), (69, 57590),

Gene: FarmResident_91 Start: 56713, Stop: 56925, Start Num: 45

Candidate Starts for FarmResident_91:

(11, 56584), (12, 56599), (13, 56608), (15, 56614), (17, 56623), (Start: 43 @56707 has 1 MA's), (Start: 45 @56713 has 19 MA's), (Start: 52 @56737 has 2 MA's), (54, 56740), (55, 56743), (60, 56758), (81, 56878),

Gene: Finemlucis_90 Start: 58613, Stop: 58783, Start Num: 52

Candidate Starts for Finemlucis_90:

(11, 58460), (12, 58475), (26, 58547), (Start: 43 @58583 has 1 MA's), (Start: 45 @58589 has 19 MA's), (Start: 52 @58613 has 2 MA's), (54, 58616), (81, 58736),

Gene: Fregley_53 Start: 36870, Stop: 36679, Start Num: 50

Candidate Starts for Fregley_53:

(1, 37143), (3, 37092), (14, 36987), (32, 36912), (Start: 50 @36870 has 11 MA's), (70, 36795), (80, 36738),

Gene: Fryberger_9 Start: 2013, Stop: 1810, Start Num: 41

Candidate Starts for Fryberger_9:

(4, 2187), (5, 2178), (8, 2163), (24, 2067), (Start: 41 @2013 has 6 MA's), (49, 1989), (56, 1971), (58, 1965),

Gene: Gabriela_89 Start: 56831, Stop: 57010, Start Num: 45

Candidate Starts for Gabriela_89:

(11, 56702), (12, 56717), (13, 56726), (17, 56741), (Start: 43 @56825 has 1 MA's), (Start: 45 @56831 has 19 MA's), (Start: 57 @56870 has 1 MA's), (58, 56873), (69, 56936),

Gene: Gardann_89 Start: 57320, Stop: 57499, Start Num: 45

Candidate Starts for Gardann_89:

(11, 57191), (12, 57206), (13, 57215), (15, 57221), (17, 57230), (26, 57278), (30, 57284), (Start: 43 @57314 has 1 MA's), (Start: 45 @57320 has 19 MA's), (Start: 57 @57359 has 1 MA's), (64, 57398), (69, 57425),

Gene: GardenSalsa_6 Start: 2415, Stop: 2209, Start Num: 39

Candidate Starts for GardenSalsa_6:

(Start: 39 @2415 has 6 MA's), (56, 2373), (65, 2325),

Gene: GenevaB15_6 Start: 2394, Stop: 2188, Start Num: 39

Candidate Starts for GenevaB15_6:

(Start: 39 @2394 has 6 MA's), (56, 2352), (63, 2316), (65, 2304),

Gene: Guey18_12 Start: 2707, Stop: 2504, Start Num: 41

Candidate Starts for Guey18_12:

(4, 2881), (5, 2872), (8, 2857), (24, 2761), (Start: 41 @2707 has 6 MA's), (46, 2695), (49, 2683), (56, 2665), (58, 2659),

Gene: GuuelaD_86 Start: 57444, Stop: 57623, Start Num: 45

Candidate Starts for GuuelaD_86:

(Start: 43 @57438 has 1 MA's), (Start: 45 @57444 has 19 MA's), (Start: 57 @57483 has 1 MA's), (58, 57486), (64, 57522), (69, 57549),

Gene: Hafay_89 Start: 57435, Stop: 57575, Start Num: 57

Candidate Starts for Hafay_89:

(12, 57282), (20, 57315), (Start: 43 @57390 has 1 MA's), (Start: 45 @57396 has 19 MA's), (Start: 57 @57435 has 1 MA's), (64, 57474), (69, 57501),

Gene: Itos_89 Start: 56391, Stop: 56570, Start Num: 45

Candidate Starts for Itos_89:

(11, 56262), (12, 56277), (13, 56286), (17, 56301), (Start: 43 @56385 has 1 MA's), (Start: 45 @56391 has 19 MA's), (Start: 57 @56430 has 1 MA's), (58, 56433), (69, 56496),

Gene: Kahlid_88 Start: 57250, Stop: 57417, Start Num: 45

Candidate Starts for Kahlid_88:

(Start: 43 @57244 has 1 MA's), (Start: 45 @57250 has 19 MA's), (Start: 52 @57274 has 2 MA's), (54, 57277), (67, 57337), (68, 57343), (77, 57361), (78, 57364),

Gene: Kelcole_50 Start: 36504, Stop: 36310, Start Num: 50

Candidate Starts for Kelcole_50:

(1, 36777), (2, 36741), (3, 36726), (14, 36621), (32, 36546), (Start: 50 @36504 has 11 MA's), (70, 36429), (80, 36372),

Gene: Kropertea_84 Start: 56457, Stop: 56645, Start Num: 52

Candidate Starts for Kropertea_84:

(Start: 43 @56427 has 1 MA's), (Start: 45 @56433 has 19 MA's), (Start: 52 @56457 has 2 MA's), (54, 56460), (55, 56463), (60, 56478), (81, 56598),

Gene: Kudfre_69 Start: 44258, Stop: 44521, Start Num: 18

Candidate Starts for Kudfre_69:

(Start: 18 @44258 has 4 MA's), (23, 44279), (25, 44282), (29, 44306), (42, 44336), (62, 44381), (74, 44429), (82, 44465), (83, 44474), (85, 44489), (86, 44492),

Gene: Lewan_90 Start: 57483, Stop: 57623, Start Num: 57

Candidate Starts for Lewan_90:

(12, 57330), (17, 57354), (Start: 43 @57438 has 1 MA's), (Start: 45 @57444 has 19 MA's), (Start: 57 @57483 has 1 MA's), (64, 57522), (69, 57549),

Gene: LilDestine_87 Start: 57157, Stop: 57336, Start Num: 45

Candidate Starts for LilDestine_87:

(Start: 43 @57151 has 1 MA's), (Start: 45 @57157 has 19 MA's), (Start: 57 @57196 has 1 MA's), (58, 57199), (64, 57235), (69, 57262),

Gene: Loadrie_88 Start: 57652, Stop: 57831, Start Num: 45

Candidate Starts for Loadrie_88:

(11, 57523), (12, 57538), (13, 57547), (17, 57562), (Start: 43 @57646 has 1 MA's), (Start: 45 @57652 has 19 MA's), (Start: 57 @57691 has 1 MA's), (58, 57694), (69, 57757),

Gene: Marcie_57 Start: 37372, Stop: 37181, Start Num: 50

Candidate Starts for Marcie_57:

(Start: 50 @37372 has 11 MA's), (80, 37240),

Gene: MkaliMitinis3_91 Start: 57639, Stop: 57782, Start Num: 52

Candidate Starts for MkaliMitinis3_91:

(7, 57450), (9, 57471), (11, 57486), (12, 57501), (26, 57573), (30, 57579), (Start: 43 @57609 has 1 MA's), (Start: 45 @57615 has 19 MA's), (Start: 52 @57639 has 2 MA's), (54, 57642), (67, 57702), (68, 57708), (77, 57726), (78, 57729),

Gene: MrMagoo_6 Start: 2415, Stop: 2209, Start Num: 39

Candidate Starts for MrMagoo_6:

(Start: 39 @2415 has 6 MA's), (56, 2373), (65, 2325),

Gene: Myrna_56 Start: 22168, Stop: 22353, Start Num: 50

Candidate Starts for Myrna_56:

(10, 22015), (Start: 50 @22168 has 11 MA's), (58, 22177), (74, 22255),

Gene: Nanosmite_5 Start: 2451, Stop: 2248, Start Num: 39

Candidate Starts for Nanosmite_5:

(21, 2514), (Start: 31 @2472 has 4 MA's), (Start: 39 @2451 has 6 MA's), (49, 2427),

Gene: NiceHouse_24 Start: 11340, Stop: 11110, Start Num: 41

Candidate Starts for NiceHouse_24:

(Start: 41 @11340 has 6 MA's), (54, 11304), (58, 11292), (75, 11208), (81, 11181),

Gene: Nicholasp3_89 Start: 57320, Stop: 57499, Start Num: 45

Candidate Starts for Nicholasp3_89:

(11, 57191), (12, 57206), (13, 57215), (15, 57221), (17, 57230), (26, 57278), (30, 57284), (Start: 43 @57314 has 1 MA's), (Start: 45 @57320 has 19 MA's), (Start: 57 @57359 has 1 MA's), (64, 57398), (69, 57425),

Gene: Octobien14_69 Start: 44537, Stop: 44797, Start Num: 18

Candidate Starts for Octobien14_69:

(Start: 18 @44537 has 4 MA's), (23, 44558), (25, 44561), (29, 44585), (42, 44615), (46, 44618), (48, 44627), (82, 44741), (83, 44750), (85, 44765), (86, 44768),

Gene: OneinaGillian_52 Start: 36406, Stop: 36215, Start Num: 50

Candidate Starts for OneinaGillian_52:

(1, 36679), (3, 36628), (14, 36523), (32, 36448), (Start: 50 @36406 has 11 MA's), (70, 36331), (80, 36274),

Gene: PYPDinur_90 Start: 57609, Stop: 57776, Start Num: 60

Candidate Starts for PYPDinur_90:

(Start: 43 @57558 has 1 MA's), (Start: 45 @57564 has 19 MA's), (54, 57591), (55, 57594), (60, 57609), (81, 57729),

Gene: Pepe25_51 Start: 35948, Stop: 35757, Start Num: 50

Candidate Starts for Pepe25_51:

(Start: 50 @35948 has 11 MA's), (70, 35873), (80, 35816), (84, 35786),

Gene: Phrampa_199 Start: 141698, Stop: 141910, Start Num: 36

Candidate Starts for Phrampa_199:

(36, 141698), (56, 141740), (61, 141761), (80, 141848),

Gene: Quby_90 Start: 56844, Stop: 57011, Start Num: 60

Candidate Starts for Quby_90:

(Start: 45 @56799 has 19 MA's), (Start: 52 @56823 has 2 MA's), (54, 56826), (55, 56829), (60, 56844), (81, 56964),

Gene: Rabbitrun_73 Start: 44915, Stop: 45124, Start Num: 31

Candidate Starts for Rabbitrun_73:

(Start: 31 @44915 has 4 MA's), (35, 44927), (51, 44957), (72, 45020), (82, 45065),

Gene: Rey_5 Start: 2370, Stop: 2203, Start Num: 50

Candidate Starts for Rey_5:

(21, 2466), (Start: 31 @2424 has 4 MA's), (Start: 39 @2403 has 6 MA's), (Start: 50 @2370 has 11 MA's), (56, 2358), (63, 2322), (65, 2310),

Gene: RobinRose_54 Start: 36915, Stop: 36724, Start Num: 50

Candidate Starts for RobinRose_54:

(1, 37188), (3, 37137), (14, 37032), (32, 36957), (Start: 50 @36915 has 11 MA's), (70, 36840), (80, 36783),

Gene: Rockabye_208 Start: 136558, Stop: 136761, Start Num: 36

Candidate Starts for Rockabye_208:

(36, 136558),

Gene: Romm_54 Start: 36915, Stop: 36724, Start Num: 50

Candidate Starts for Romm_54:

(1, 37188), (3, 37137), (14, 37032), (32, 36957), (Start: 50 @36915 has 11 MA's), (70, 36840), (80, 36783),

Gene: Ronaldo_13 Start: 3139, Stop: 2936, Start Num: 41

Candidate Starts for Ronaldo_13:

(Start: 41 @3139 has 6 MA's), (46, 3127), (49, 3115), (56, 3097), (58, 3091), (66, 3052),

Gene: Rumpelstiltskin_85 Start: 57113, Stop: 57292, Start Num: 45

Candidate Starts for Rumpelstiltskin_85:

(11, 56984), (12, 56999), (13, 57008), (15, 57014), (17, 57023), (26, 57071), (30, 57077), (Start: 43 @57107 has 1 MA's), (Start: 45 @57113 has 19 MA's), (Start: 57 @57152 has 1 MA's), (64, 57191), (69, 57218),

Gene: SJReid_227 Start: 142221, Stop: 142508, Start Num: 31

Candidate Starts for SJReid_227:

(Start: 31 @142221 has 4 MA's), (44, 142248), (53, 142278),

Gene: SJReid_210 Start: 135453, Stop: 135656, Start Num: 36

Candidate Starts for SJReid_210:

(36, 135453), (56, 135489), (70, 135549), (80, 135600),

Gene: ScoobyDoobyDoo_50 Start: 17925, Stop: 18128, Start Num: 50

Candidate Starts for ScoobyDoobyDoo_50:

(28, 17868), (Start: 50 @17925 has 11 MA's), (60, 17949), (72, 18018), (87, 18108), (88, 18120),

Gene: Sephiroth_68 Start: 44430, Stop: 44693, Start Num: 18

Candidate Starts for Sephiroth_68:

(Start: 18 @44430 has 4 MA's), (23, 44451), (25, 44454), (29, 44478), (42, 44508), (62, 44553), (74, 44601), (82, 44637), (83, 44646), (85, 44661), (86, 44664),

Gene: Sheng711_91 Start: 57040, Stop: 57252, Start Num: 45

Candidate Starts for Sheng711_91:

(Start: 43 @57034 has 1 MA's), (Start: 45 @57040 has 19 MA's), (54, 57067), (55, 57070), (60, 57085), (81, 57205),

Gene: SpeedDemon_1180 Start: 76063, Stop: 76290, Start Num: 27

Candidate Starts for SpeedDemon_1180:

(Start: 27 @76063 has 2 MA's), (Start: 47 @76102 has 1 MA's), (86, 76261),

Gene: Syleon_70 Start: 44371, Stop: 44631, Start Num: 18

Candidate Starts for Syleon_70:

(Start: 18 @44371 has 4 MA's), (23, 44392), (25, 44395), (29, 44419), (42, 44449), (46, 44452), (82, 44575), (85, 44599), (86, 44602),

Gene: Tempo_52 Start: 36794, Stop: 36603, Start Num: 50

Candidate Starts for Tempo_52:

(Start: 50 @36794 has 11 MA's), (70, 36719), (80, 36662),

Gene: Tourach_89 Start: 58025, Stop: 58204, Start Num: 45

Candidate Starts for Tourach_89:

(11, 57896), (12, 57911), (13, 57920), (26, 57983), (Start: 43 @58019 has 1 MA's), (Start: 45 @58025 has 19 MA's), (Start: 57 @58064 has 1 MA's), (58, 58067), (64, 58103), (69, 58130),

Gene: Towmatter_114 Start: 70068, Stop: 70304, Start Num: 27

Candidate Starts for Towmatter_114:

(Start: 27 @70068 has 2 MA's), (37, 70092), (73, 70206), (85, 70272), (86, 70275),

Gene: Trax_73 Start: 45629, Stop: 45832, Start Num: 31

Candidate Starts for Trax_73:

(Start: 31 @45629 has 4 MA's), (33, 45638), (35, 45641), (38, 45647), (40, 45650), (85, 45800), (86, 45803), (88, 45824),

Gene: Underpass_79 Start: 52356, Stop: 52535, Start Num: 45

Candidate Starts for Underpass_79:

(11, 52227), (12, 52242), (13, 52251), (15, 52257), (17, 52266), (26, 52314), (30, 52320), (Start: 43 @52350 has 1 MA's), (Start: 45 @52356 has 19 MA's), (Start: 57 @52395 has 1 MA's), (64, 52434), (69, 52461),

Gene: Validus_72 Start: 44730, Stop: 44951, Start Num: 31

Candidate Starts for Validus_72:

(19, 44679), (Start: 31 @44730 has 4 MA's), (Start: 47 @44748 has 1 MA's), (72, 44838), (80, 44871), (81, 44880),

Gene: Volt_13 Start: 3139, Stop: 2936, Start Num: 41

Candidate Starts for Volt_13:

(Start: 41 @3139 has 6 MA's), (46, 3127), (49, 3115), (56, 3097), (58, 3091), (66, 3052),

Gene: Wigglewigggle_89 Start: 57408, Stop: 57575, Start Num: 45

Candidate Starts for Wigglewigggle_89:

(7, 57243), (9, 57264), (11, 57279), (12, 57294), (26, 57366), (30, 57372), (Start: 43 @57402 has 1 MA's), (Start: 45 @57408 has 19 MA's), (Start: 52 @57432 has 2 MA's), (54, 57435), (67, 57495), (68, 57501), (77, 57519), (78, 57522),

Gene: Wilder_90 Start: 57250, Stop: 57417, Start Num: 45

Candidate Starts for Wilder_90:

(Start: 43 @57244 has 1 MA's), (Start: 45 @57250 has 19 MA's), (Start: 52 @57274 has 2 MA's), (54, 57277), (67, 57337), (68, 57343), (77, 57361), (78, 57364),

Gene: Zakai_90 Start: 57893, Stop: 58072, Start Num: 45

Candidate Starts for Zakai_90:

(11, 57764), (12, 57779), (13, 57788), (17, 57803), (Start: 43 @57887 has 1 MA's), (Start: 45 @57893 has 19 MA's), (Start: 57 @57932 has 1 MA's), (58, 57935), (69, 57998),

Gene: ZhongYanYuan_86 Start: 57300, Stop: 57479, Start Num: 45

Candidate Starts for ZhongYanYuan_86:

(Start: 43 @57294 has 1 MA's), (Start: 45 @57300 has 19 MA's), (Start: 57 @57339 has 1 MA's), (58, 57342), (64, 57378), (69, 57405),

Gene: Ziko_14 Start: 3153, Stop: 2950, Start Num: 41

Candidate Starts for Ziko_14:

(Start: 41 @3153 has 6 MA's), (46, 3141), (49, 3129), (56, 3111), (58, 3105), (66, 3066),