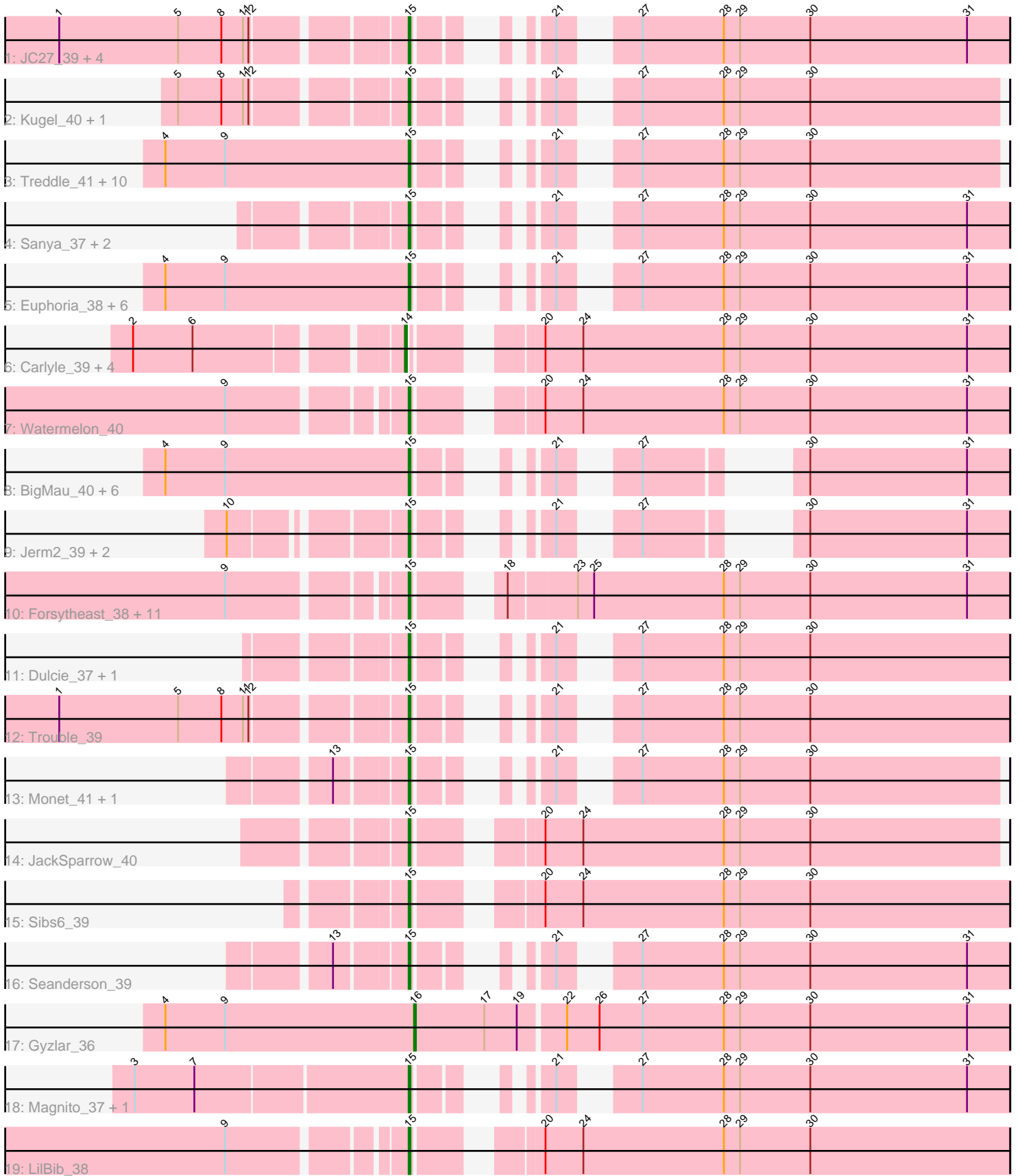


Pham 216139



Note: Tracks are now grouped by subcluster and scaled. Switching in subcluster is indicated by changes in track color. Track scale is now set by default to display the region 30 bp upstream of start 1 to 30 bp downstream of the last possible start. If this default region is judged to be packed too tightly with annotated starts, the track will be further scaled to only show that region of the ORF with annotated starts. This action will be indicated by adding "Zoomed" to the title. For starts, yellow indicates the location of called starts comprised solely of Glimmer/GeneMark auto-annotations, green indicates the location of called starts with at least 1 manual gene annotation.

## Pham 216139 Report

This analysis was run 02/22/25 on database version 588.

Pham number 216139 has 68 members, 5 are drafts.

Phages represented in each track:

- Track 1 : JC27\_39, Acme\_41, Fajezeel\_40, Greg\_40, Ashballer\_40
- Track 2 : Kugel\_40, Scowl\_38
- Track 3 : Treddle\_41, BeesKnees\_39, Aeneas\_41, Petruccio\_39, Edtherson\_40, Zephyr\_39, DreamCatcher\_41, PinkPlastic\_37, Bigchungji\_38, Mule\_37, Seabiscuit\_40
- Track 4 : Sanya\_37, Ciao\_38, Pippin\_40
- Track 5 : Euphoria\_38, Marcell\_38, SpikeBT\_40, BillKnuckles\_39, Pari\_39, GageAP\_40, U2\_38
- Track 6 : Carlyle\_39, Chanagan\_37, PherrisBueller\_39, Dreamboat\_39, Jasper\_39
- Track 7 : Watermelon\_40
- Track 8 : BigMau\_40, Burton\_39, Museum\_40, Molly\_40, Petp2012\_40, TwoPeat\_39, Bob3\_37
- Track 9 : Jerm2\_39, HermioneGrange\_38, Rohr\_39
- Track 10 : Forsytheast\_38, SwissCheese\_40, Marchy\_33, Corvo\_39, Levia\_34, HanShotFirst\_37, ShortQueendom\_33, Moose\_38, Altman\_40, PhineBark\_38, Payneful\_38, Kanely\_39
- Track 11 : Dulcie\_37, Rutherferd\_40
- Track 12 : Trouble\_39
- Track 13 : Monet\_41, Pepe\_34
- Track 14 : JackSparrow\_40
- Track 15 : Sibs6\_39
- Track 16 : Seanderson\_39
- Track 17 : Gyzlar\_36
- Track 18 : Magnito\_37, Turj99\_37
- Track 19 : LilBib\_38

### ***Summary of Final Annotations (See graph section above for start numbers):***

The start number called the most often in the published annotations is 15, it was called in 57 of the 63 non-draft genes in the pham.

Genes that call this "Most Annotated" start:

- Acme\_41, Aeneas\_41, Altman\_40, Ashballer\_40, BeesKnees\_39, BigMau\_40, Bigchungji\_38, BillKnuckles\_39, Bob3\_37, Burton\_39, Ciao\_38, Corvo\_39,

DreamCatcher\_41, Dulcie\_37, Edtherson\_40, Euphoria\_38, Fajezeel\_40, Forsytheast\_38, GageAP\_40, Greg\_40, HanShotFirst\_37, HermioneGrange\_38, JC27\_39, JackSparrow\_40, Jerm2\_39, Kanely\_39, Kugel\_40, Levia\_34, LilBib\_38, Magnito\_37, Marcell\_38, Marchy\_33, Molly\_40, Monet\_41, Moose\_38, Mule\_37, Museum\_40, Pari\_39, Payneful\_38, Pepe\_34, Petp2012\_40, Petruccio\_39, PhineBark\_38, PinkPlastic\_37, Pippin\_40, Rohr\_39, Rutherford\_40, Sanya\_37, Scowl\_38, Seabiscuit\_40, Seanderson\_39, ShortQueendom\_33, Sibs6\_39, SpikeBT\_40, SwissCheese\_40, Treddle\_41, Trouble\_39, Turj99\_37, TwoPeat\_39, U2\_38, Watermelon\_40, Zephyr\_39,

Genes that have the "Most Annotated" start but do not call it:

- 

Genes that do not have the "Most Annotated" start:

- Carlyle\_39, Chanagan\_37, Dreamboat\_39, Gyzlar\_36, Jasper\_39, PherrisBueller\_39,

### Summary by start number:

Start 14:

- Found in 5 of 68 ( 7.4% ) of genes in pham
- Manual Annotations of this start: 5 of 63
- Called 100.0% of time when present
- Phage (with cluster) where this start called: Carlyle\_39 (A1), Chanagan\_37 (A1), Dreamboat\_39 (A1), Jasper\_39 (A1), PherrisBueller\_39 (A1),

Start 15:

- Found in 62 of 68 ( 91.2% ) of genes in pham
- Manual Annotations of this start: 57 of 63
- Called 100.0% of time when present
- Phage (with cluster) where this start called: Acme\_41 (A1), Aeneas\_41 (A1), Altman\_40 (A1), Ashballer\_40 (A1), BeesKnees\_39 (A1), BigMau\_40 (A1), Bigchung\_38 (A1), BillKnuckles\_39 (A1), Bob3\_37 (A1), Burton\_39 (A1), Ciao\_38 (A1), Corvo\_39 (A1), DreamCatcher\_41 (A1), Dulcie\_37 (A1), Edtherson\_40 (A1), Euphoria\_38 (A1), Fajezeel\_40 (A1), Forsytheast\_38 (A1), GageAP\_40 (A1), Greg\_40 (A1), HanShotFirst\_37 (A1), HermioneGrange\_38 (A1), JC27\_39 (A1), JackSparrow\_40 (A1), Jerm2\_39 (A1), Kanely\_39 (A1), Kugel\_40 (A1), Levia\_34 (A1), LilBib\_38 (A1), Magnito\_37 (A1), Marcell\_38 (A1), Marchy\_33 (A1), Molly\_40 (A1), Monet\_41 (A1), Moose\_38 (A1), Mule\_37 (A1), Museum\_40 (A1), Pari\_39 (A1), Payneful\_38 (A1), Pepe\_34 (A1), Petp2012\_40 (A1), Petruccio\_39 (A1), PhineBark\_38 (A1), PinkPlastic\_37 (A1), Pippin\_40 (A1), Rohr\_39 (A1), Rutherford\_40 (A1), Sanya\_37 (A1), Scowl\_38 (A1), Seabiscuit\_40 (A1), Seanderson\_39 (A1), ShortQueendom\_33 (A1), Sibs6\_39 (A1), SpikeBT\_40 (A1), SwissCheese\_40 (A1), Treddle\_41 (A1), Trouble\_39 (A1), Turj99\_37 (A1), TwoPeat\_39 (A1), U2\_38 (A1), Watermelon\_40 (A1), Zephyr\_39 (A1),

Start 16:

- Found in 1 of 68 ( 1.5% ) of genes in pham
- Manual Annotations of this start: 1 of 63
- Called 100.0% of time when present
- Phage (with cluster) where this start called: Gyzlar\_36 (A1),

### Summary by clusters:

There is one cluster represented in this pham: A1

Info for manual annotations of cluster A1:

- Start number 14 was manually annotated 5 times for cluster A1.
- Start number 15 was manually annotated 57 times for cluster A1.
- Start number 16 was manually annotated 1 time for cluster A1.

**Gene Information:**

Gene: Acme\_41 Start: 31739, Stop: 31467, Start Num: 15

Candidate Starts for Acme\_41:

(1, 31919), (5, 31853), (8, 31829), (11, 31817), (12, 31814), (Start: 15 @31739 has 57 MA's), (21, 31697), (27, 31670), (28, 31625), (29, 31616), (30, 31577), (31, 31490),

Gene: Aeneas\_41 Start: 31799, Stop: 31530, Start Num: 15

Candidate Starts for Aeneas\_41:

(4, 31934), (9, 31901), (Start: 15 @31799 has 57 MA's), (21, 31760), (27, 31733), (28, 31688), (29, 31679), (30, 31640),

Gene: Altman\_40 Start: 32259, Stop: 31951, Start Num: 15

Candidate Starts for Altman\_40:

(9, 32346), (Start: 15 @32259 has 57 MA's), (18, 32226), (23, 32190), (25, 32181), (28, 32109), (29, 32100), (30, 32061), (31, 31974),

Gene: Ashballer\_40 Start: 32195, Stop: 31923, Start Num: 15

Candidate Starts for Ashballer\_40:

(1, 32375), (5, 32309), (8, 32285), (11, 32273), (12, 32270), (Start: 15 @32195 has 57 MA's), (21, 32153), (27, 32126), (28, 32081), (29, 32072), (30, 32033), (31, 31946),

Gene: BeesKnees\_39 Start: 31359, Stop: 31087, Start Num: 15

Candidate Starts for BeesKnees\_39:

(4, 31494), (9, 31461), (Start: 15 @31359 has 57 MA's), (21, 31317), (27, 31290), (28, 31245), (29, 31236), (30, 31197),

Gene: BigMau\_40 Start: 31436, Stop: 31206, Start Num: 15

Candidate Starts for BigMau\_40:

(4, 31571), (9, 31538), (Start: 15 @31436 has 57 MA's), (21, 31394), (27, 31367), (30, 31316), (31, 31229),

Gene: Bigchungi\_38 Start: 31052, Stop: 30780, Start Num: 15

Candidate Starts for Bigchungi\_38:

(4, 31187), (9, 31154), (Start: 15 @31052 has 57 MA's), (21, 31010), (27, 30983), (28, 30938), (29, 30929), (30, 30890),

Gene: BillKnuckles\_39 Start: 32162, Stop: 31890, Start Num: 15

Candidate Starts for BillKnuckles\_39:

(4, 32297), (9, 32264), (Start: 15 @32162 has 57 MA's), (21, 32120), (27, 32093), (28, 32048), (29, 32039), (30, 32000), (31, 31913),

Gene: Bob3\_37 Start: 30786, Stop: 30556, Start Num: 15

Candidate Starts for Bob3\_37:

(4, 30921), (9, 30888), (Start: 15 @30786 has 57 MA's), (21, 30744), (27, 30717), (30, 30666), (31, 30579),

Gene: Burton\_39 Start: 31356, Stop: 31126, Start Num: 15

Candidate Starts for Burton\_39:

(4, 31491), (9, 31458), (Start: 15 @31356 has 57 MA's), (21, 31314), (27, 31287), (30, 31236), (31, 31149),

Gene: Carlyle\_39 Start: 30068, Stop: 29760, Start Num: 14

Candidate Starts for Carlyle\_39:

(2, 30203), (6, 30170), (Start: 14 @30068 has 5 MA's), (20, 30017), (24, 29996), (28, 29918), (29, 29909), (30, 29870), (31, 29783),

Gene: Chanagan\_37 Start: 30908, Stop: 30600, Start Num: 14

Candidate Starts for Chanagan\_37:

(2, 31043), (6, 31010), (Start: 14 @30908 has 5 MA's), (20, 30857), (24, 30836), (28, 30758), (29, 30749), (30, 30710), (31, 30623),

Gene: Ciao\_38 Start: 31210, Stop: 30938, Start Num: 15

Candidate Starts for Ciao\_38:

(Start: 15 @31210 has 57 MA's), (21, 31168), (27, 31141), (28, 31096), (29, 31087), (30, 31048), (31, 30961),

Gene: Corvo\_39 Start: 32273, Stop: 31965, Start Num: 15

Candidate Starts for Corvo\_39:

(9, 32360), (Start: 15 @32273 has 57 MA's), (18, 32240), (23, 32204), (25, 32195), (28, 32123), (29, 32114), (30, 32075), (31, 31988),

Gene: DreamCatcher\_41 Start: 32660, Stop: 32388, Start Num: 15

Candidate Starts for DreamCatcher\_41:

(4, 32795), (9, 32762), (Start: 15 @32660 has 57 MA's), (21, 32618), (27, 32591), (28, 32546), (29, 32537), (30, 32498),

Gene: Dreamboat\_39 Start: 31286, Stop: 30978, Start Num: 14

Candidate Starts for Dreamboat\_39:

(2, 31421), (6, 31388), (Start: 14 @31286 has 5 MA's), (20, 31235), (24, 31214), (28, 31136), (29, 31127), (30, 31088), (31, 31001),

Gene: Dulcie\_37 Start: 30943, Stop: 30671, Start Num: 15

Candidate Starts for Dulcie\_37:

(Start: 15 @30943 has 57 MA's), (21, 30901), (27, 30874), (28, 30829), (29, 30820), (30, 30781),

Gene: Edtherson\_40 Start: 32538, Stop: 32272, Start Num: 15

Candidate Starts for Edtherson\_40:

(4, 32673), (9, 32640), (Start: 15 @32538 has 57 MA's), (21, 32496), (27, 32469), (28, 32424), (29, 32415), (30, 32376),

Gene: Euphoria\_38 Start: 31379, Stop: 31107, Start Num: 15

Candidate Starts for Euphoria\_38:

(4, 31514), (9, 31481), (Start: 15 @31379 has 57 MA's), (21, 31337), (27, 31310), (28, 31265), (29, 31256), (30, 31217), (31, 31130),

Gene: Fajezeel\_40 Start: 31568, Stop: 31296, Start Num: 15

Candidate Starts for Fajezeel\_40:

(1, 31748), (5, 31682), (8, 31658), (11, 31646), (12, 31643), (Start: 15 @31568 has 57 MA's), (21, 31526), (27, 31499), (28, 31454), (29, 31445), (30, 31406), (31, 31319),

Gene: Forsytheast\_38 Start: 31551, Stop: 31243, Start Num: 15

Candidate Starts for Forsytheast\_38:

(9, 31638), (Start: 15 @31551 has 57 MA's), (18, 31518), (23, 31482), (25, 31473), (28, 31401), (29, 31392), (30, 31353), (31, 31266),

Gene: GageAP\_40 Start: 31664, Stop: 31392, Start Num: 15

Candidate Starts for GageAP\_40:

(4, 31799), (9, 31766), (Start: 15 @31664 has 57 MA's), (21, 31622), (27, 31595), (28, 31550), (29, 31541), (30, 31502), (31, 31415),

Gene: Greg\_40 Start: 31568, Stop: 31296, Start Num: 15

Candidate Starts for Greg\_40:

(1, 31748), (5, 31682), (8, 31658), (11, 31646), (12, 31643), (Start: 15 @31568 has 57 MA's), (21, 31526), (27, 31499), (28, 31454), (29, 31445), (30, 31406), (31, 31319),

Gene: Gyzlar\_36 Start: 30052, Stop: 29726, Start Num: 16

Candidate Starts for Gyzlar\_36:

(4, 30190), (9, 30157), (Start: 16 @30052 has 1 MA's), (17, 30013), (19, 29995), (22, 29971), (26, 29953), (27, 29929), (28, 29884), (29, 29875), (30, 29836), (31, 29749),

Gene: HanShotFirst\_37 Start: 30903, Stop: 30595, Start Num: 15

Candidate Starts for HanShotFirst\_37:

(9, 30990), (Start: 15 @30903 has 57 MA's), (18, 30870), (23, 30834), (25, 30825), (28, 30753), (29, 30744), (30, 30705), (31, 30618),

Gene: HermioneGrange\_38 Start: 31174, Stop: 30944, Start Num: 15

Candidate Starts for HermioneGrange\_38:

(10, 31258), (Start: 15 @31174 has 57 MA's), (21, 31132), (27, 31105), (30, 31054), (31, 30967),

Gene: JC27\_39 Start: 31765, Stop: 31493, Start Num: 15

Candidate Starts for JC27\_39:

(1, 31945), (5, 31879), (8, 31855), (11, 31843), (12, 31840), (Start: 15 @31765 has 57 MA's), (21, 31723), (27, 31696), (28, 31651), (29, 31642), (30, 31603), (31, 31516),

Gene: JackSparrow\_40 Start: 32093, Stop: 31791, Start Num: 15

Candidate Starts for JackSparrow\_40:

(Start: 15 @32093 has 57 MA's), (20, 32042), (24, 32021), (28, 31943), (29, 31934), (30, 31895),

Gene: Jasper\_39 Start: 31172, Stop: 30864, Start Num: 14

Candidate Starts for Jasper\_39:

(2, 31307), (6, 31274), (Start: 14 @31172 has 5 MA's), (20, 31121), (24, 31100), (28, 31022), (29, 31013), (30, 30974), (31, 30887),

Gene: Jerm2\_39 Start: 31429, Stop: 31199, Start Num: 15

Candidate Starts for Jerm2\_39:

(10, 31513), (Start: 15 @31429 has 57 MA's), (21, 31387), (27, 31360), (30, 31309), (31, 31222),

Gene: Kanely\_39 Start: 32035, Stop: 31727, Start Num: 15

Candidate Starts for Kanely\_39:

(9, 32122), (Start: 15 @32035 has 57 MA's), (18, 32002), (23, 31966), (25, 31957), (28, 31885), (29, 31876), (30, 31837), (31, 31750),

Gene: Kugel\_40 Start: 31983, Stop: 31717, Start Num: 15

Candidate Starts for Kugel\_40:

(5, 32097), (8, 32073), (11, 32061), (12, 32058), (Start: 15 @31983 has 57 MA's), (21, 31941), (27, 31914), (28, 31869), (29, 31860), (30, 31821),

Gene: Levia\_34 Start: 31194, Stop: 30886, Start Num: 15

Candidate Starts for Levia\_34:

(9, 31281), (Start: 15 @31194 has 57 MA's), (18, 31161), (23, 31125), (25, 31116), (28, 31044), (29, 31035), (30, 30996), (31, 30909),

Gene: LilBib\_38 Start: 32107, Stop: 31799, Start Num: 15

Candidate Starts for LilBib\_38:

(9, 32194), (Start: 15 @32107 has 57 MA's), (20, 32056), (24, 32035), (28, 31957), (29, 31948), (30, 31909),

Gene: Magnito\_37 Start: 30988, Stop: 30716, Start Num: 15

Candidate Starts for Magnito\_37:

(3, 31135), (7, 31102), (Start: 15 @30988 has 57 MA's), (21, 30946), (27, 30919), (28, 30874), (29, 30865), (30, 30826), (31, 30739),

Gene: Marcell\_38 Start: 31685, Stop: 31413, Start Num: 15

Candidate Starts for Marcell\_38:

(4, 31820), (9, 31787), (Start: 15 @31685 has 57 MA's), (21, 31643), (27, 31616), (28, 31571), (29, 31562), (30, 31523), (31, 31436),

Gene: Marchy\_33 Start: 28275, Stop: 27967, Start Num: 15

Candidate Starts for Marchy\_33:

(9, 28362), (Start: 15 @28275 has 57 MA's), (18, 28242), (23, 28206), (25, 28197), (28, 28125), (29, 28116), (30, 28077), (31, 27990),

Gene: Molly\_40 Start: 31229, Stop: 30999, Start Num: 15

Candidate Starts for Molly\_40:

(4, 31364), (9, 31331), (Start: 15 @31229 has 57 MA's), (21, 31187), (27, 31160), (30, 31109), (31, 31022),

Gene: Monet\_41 Start: 33055, Stop: 32789, Start Num: 15

Candidate Starts for Monet\_41:

(13, 33091), (Start: 15 @33055 has 57 MA's), (21, 33013), (27, 32986), (28, 32941), (29, 32932), (30, 32893),

Gene: Moose\_38 Start: 31551, Stop: 31243, Start Num: 15

Candidate Starts for Moose\_38:

(9, 31638), (Start: 15 @31551 has 57 MA's), (18, 31518), (23, 31482), (25, 31473), (28, 31401), (29, 31392), (30, 31353), (31, 31266),

Gene: Mule\_37 Start: 29541, Stop: 29269, Start Num: 15

Candidate Starts for Mule\_37:

(4, 29676), (9, 29643), (Start: 15 @29541 has 57 MA's), (21, 29499), (27, 29472), (28, 29427), (29, 29418), (30, 29379),

Gene: Museum\_40 Start: 31295, Stop: 31065, Start Num: 15

Candidate Starts for Museum\_40:

(4, 31430), (9, 31397), (Start: 15 @31295 has 57 MA's), (21, 31253), (27, 31226), (30, 31175), (31, 31088),

Gene: Pari\_39 Start: 31087, Stop: 30815, Start Num: 15

Candidate Starts for Pari\_39:

(4, 31222), (9, 31189), (Start: 15 @31087 has 57 MA's), (21, 31045), (27, 31018), (28, 30973), (29, 30964), (30, 30925), (31, 30838),

Gene: Payneful\_38 Start: 30992, Stop: 30684, Start Num: 15

Candidate Starts for Payneful\_38:

(9, 31079), (Start: 15 @30992 has 57 MA's), (18, 30959), (23, 30923), (25, 30914), (28, 30842), (29, 30833), (30, 30794), (31, 30707),

Gene: Pepe\_34 Start: 29170, Stop: 28904, Start Num: 15

Candidate Starts for Pepe\_34:

(13, 29206), (Start: 15 @29170 has 57 MA's), (21, 29128), (27, 29101), (28, 29056), (29, 29047), (30, 29008),

Gene: Petp2012\_40 Start: 32213, Stop: 31983, Start Num: 15

Candidate Starts for Petp2012\_40:

(4, 32348), (9, 32315), (Start: 15 @32213 has 57 MA's), (21, 32171), (27, 32144), (30, 32093), (31, 32006),

Gene: Petruccio\_39 Start: 31567, Stop: 31298, Start Num: 15

Candidate Starts for Petruccio\_39:

(4, 31702), (9, 31669), (Start: 15 @31567 has 57 MA's), (21, 31528), (27, 31501), (28, 31456), (29, 31447), (30, 31408),

Gene: PherrisBueller\_39 Start: 31183, Stop: 30875, Start Num: 14

Candidate Starts for PherrisBueller\_39:

(2, 31318), (6, 31285), (Start: 14 @31183 has 5 MA's), (20, 31132), (24, 31111), (28, 31033), (29, 31024), (30, 30985), (31, 30898),

Gene: PhineBark\_38 Start: 32212, Stop: 31904, Start Num: 15

Candidate Starts for PhineBark\_38:

(9, 32299), (Start: 15 @32212 has 57 MA's), (18, 32179), (23, 32143), (25, 32134), (28, 32062), (29, 32053), (30, 32014), (31, 31927),

Gene: PinkPlastic\_37 Start: 31097, Stop: 30825, Start Num: 15

Candidate Starts for PinkPlastic\_37:

(4, 31232), (9, 31199), (Start: 15 @31097 has 57 MA's), (21, 31055), (27, 31028), (28, 30983), (29, 30974), (30, 30935),

Gene: Pippin\_40 Start: 31627, Stop: 31355, Start Num: 15

Candidate Starts for Pippin\_40:

(Start: 15 @31627 has 57 MA's), (21, 31585), (27, 31558), (28, 31513), (29, 31504), (30, 31465), (31, 31378),

Gene: Rohr\_39 Start: 31475, Stop: 31245, Start Num: 15

Candidate Starts for Rohr\_39:



(10, 31559), (Start: 15 @31475 has 57 MA's), (21, 31433), (27, 31406), (30, 31355), (31, 31268),

Gene: Rutherferd\_40 Start: 32367, Stop: 32101, Start Num: 15

Candidate Starts for Rutherferd\_40:

(Start: 15 @32367 has 57 MA's), (21, 32325), (27, 32298), (28, 32253), (29, 32244), (30, 32205),

Gene: Sanya\_37 Start: 32063, Stop: 31791, Start Num: 15

Candidate Starts for Sanya\_37:

(Start: 15 @32063 has 57 MA's), (21, 32021), (27, 31994), (28, 31949), (29, 31940), (30, 31901), (31, 31814),

Gene: Scowl\_38 Start: 31823, Stop: 31551, Start Num: 15

Candidate Starts for Scowl\_38:

(5, 31937), (8, 31913), (11, 31901), (12, 31898), (Start: 15 @31823 has 57 MA's), (21, 31781), (27, 31754), (28, 31709), (29, 31700), (30, 31661),

Gene: Seabiscuit\_40 Start: 31328, Stop: 31056, Start Num: 15

Candidate Starts for Seabiscuit\_40:

(4, 31463), (9, 31430), (Start: 15 @31328 has 57 MA's), (21, 31286), (27, 31259), (28, 31214), (29, 31205), (30, 31166),

Gene: Seanderson\_39 Start: 31957, Stop: 31685, Start Num: 15

Candidate Starts for Seanderson\_39:

(13, 31993), (Start: 15 @31957 has 57 MA's), (21, 31915), (27, 31888), (28, 31843), (29, 31834), (30, 31795), (31, 31708),

Gene: ShortQueendom\_33 Start: 28032, Stop: 27724, Start Num: 15

Candidate Starts for ShortQueendom\_33:

(9, 28119), (Start: 15 @28032 has 57 MA's), (18, 27999), (23, 27963), (25, 27954), (28, 27882), (29, 27873), (30, 27834), (31, 27747),

Gene: Sibs6\_39 Start: 30489, Stop: 30181, Start Num: 15

Candidate Starts for Sibs6\_39:

(Start: 15 @30489 has 57 MA's), (20, 30438), (24, 30417), (28, 30339), (29, 30330), (30, 30291),

Gene: SpikeBT\_40 Start: 32361, Stop: 32089, Start Num: 15

Candidate Starts for SpikeBT\_40:

(4, 32496), (9, 32463), (Start: 15 @32361 has 57 MA's), (21, 32319), (27, 32292), (28, 32247), (29, 32238), (30, 32199), (31, 32112),

Gene: SwissCheese\_40 Start: 32051, Stop: 31743, Start Num: 15

Candidate Starts for SwissCheese\_40:

(9, 32138), (Start: 15 @32051 has 57 MA's), (18, 32018), (23, 31982), (25, 31973), (28, 31901), (29, 31892), (30, 31853), (31, 31766),

Gene: Treddle\_41 Start: 33009, Stop: 32743, Start Num: 15

Candidate Starts for Treddle\_41:

(4, 33144), (9, 33111), (Start: 15 @33009 has 57 MA's), (21, 32967), (27, 32940), (28, 32895), (29, 32886), (30, 32847),

Gene: Trouble\_39 Start: 32267, Stop: 31995, Start Num: 15

Candidate Starts for Trouble\_39:

(1, 32447), (5, 32381), (8, 32357), (11, 32345), (12, 32342), (Start: 15 @32267 has 57 MA's), (21, 32225), (27, 32198), (28, 32153), (29, 32144), (30, 32105),

Gene: Turj99\_37 Start: 31258, Stop: 30986, Start Num: 15

Candidate Starts for Turj99\_37:

(3, 31405), (7, 31372), (Start: 15 @31258 has 57 MA's), (21, 31216), (27, 31189), (28, 31144), (29, 31135), (30, 31096), (31, 31009),

Gene: TwoPeat\_39 Start: 31714, Stop: 31484, Start Num: 15

Candidate Starts for TwoPeat\_39:

(4, 31849), (9, 31816), (Start: 15 @31714 has 57 MA's), (21, 31672), (27, 31645), (30, 31594), (31, 31507),

Gene: U2\_38 Start: 31407, Stop: 31135, Start Num: 15

Candidate Starts for U2\_38:

(4, 31542), (9, 31509), (Start: 15 @31407 has 57 MA's), (21, 31365), (27, 31338), (28, 31293), (29, 31284), (30, 31245), (31, 31158),

Gene: Watermelon\_40 Start: 32252, Stop: 31944, Start Num: 15

Candidate Starts for Watermelon\_40:

(9, 32339), (Start: 15 @32252 has 57 MA's), (20, 32201), (24, 32180), (28, 32102), (29, 32093), (30, 32054), (31, 31967),

Gene: Zephyr\_39 Start: 31816, Stop: 31544, Start Num: 15

Candidate Starts for Zephyr\_39:

(4, 31951), (9, 31918), (Start: 15 @31816 has 57 MA's), (21, 31774), (27, 31747), (28, 31702), (29, 31693), (30, 31654),