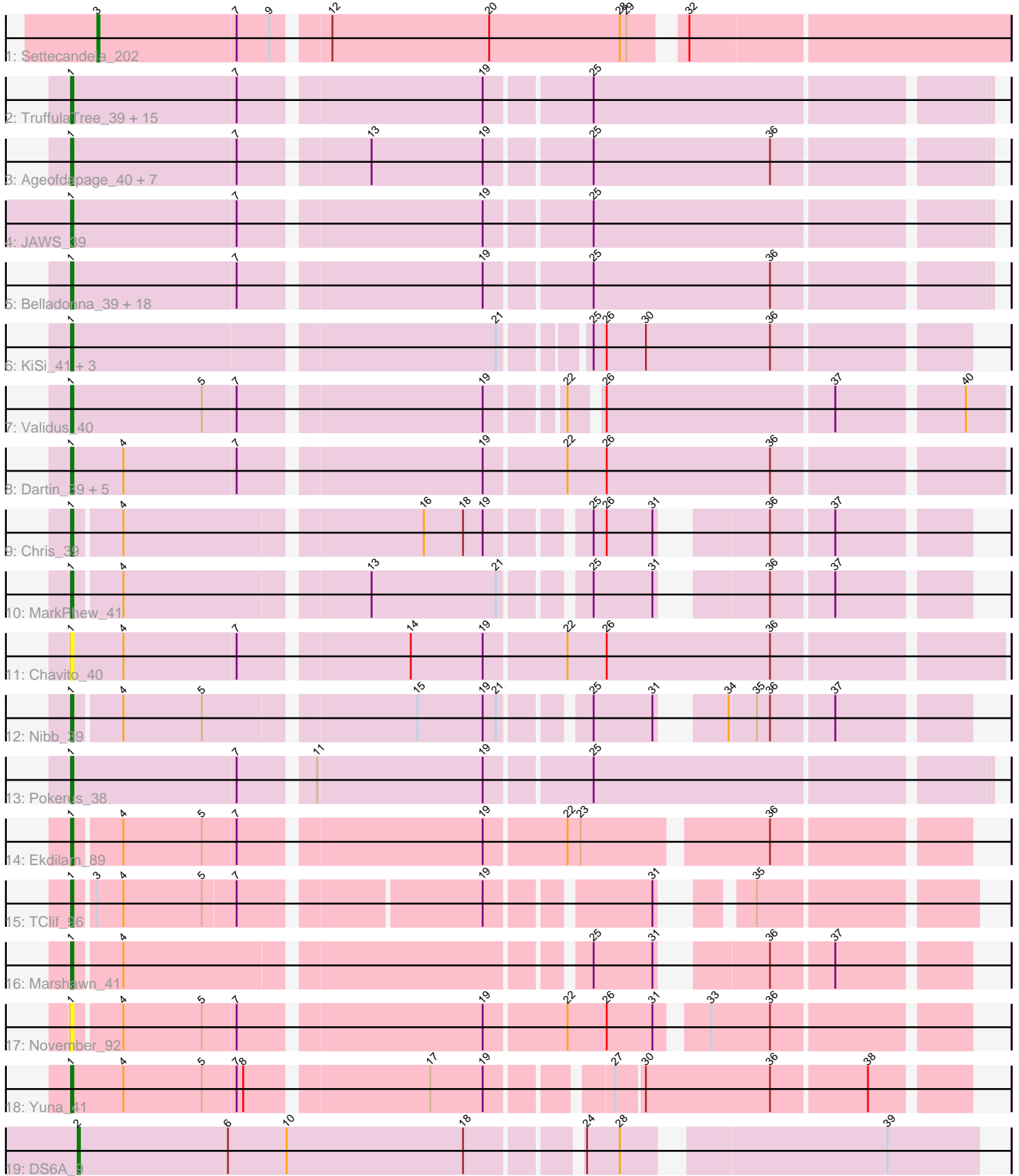


Pham 216145



Note: Tracks are now grouped by subcluster and scaled. Switching in subcluster is indicated by changes in track color. Track scale is now set by default to display the region 30 bp upstream of start 1 to 30 bp downstream of the last possible start. If this default region is judged to be packed too tightly with annotated starts, the track will be further scaled to only show that region of the ORF with annotated starts. This action will be indicated by adding "Zoomed" to the title. For starts, yellow indicates the location of called starts comprised solely of Glimmer/GeneMark auto-annotations, green indicates the location of called starts with at least 1 manual gene annotation.

Pham 216145 Report

This analysis was run 02/22/25 on database version 588.

Pham number 216145 has 67 members, 6 are drafts.

Phages represented in each track:

- Track 1 : Settecandela_202
- Track 2 : TruffulaTree_39, BarrelRoll_39, Padpat_40, Atiba_39, Geraldini_39, HedwigODU_39, ActinUp_39, Adephagia_39, Emerson_40, Veliki_39, Jayhawk_40, Ramen_39, Tachez_39, Slimphazie_39, Rapunzel97_39, YoureAdopted_37
- Track 3 : Ageofdapage_40, TreyKay_38, Prithvi_38, LindNT_38, MeaningOfLife_39, LaterM_39, Murucutumbu_39, Bella96_39
- Track 4 : JAWS_39
- Track 5 : Belladonna_39, Inky_39, Beezoo_39, BGlluviae_39, Capricorn_39, Twitch_39, Peel_39, Jeckyll_39, CREW_39, Llorens_39, Spock_39, Lunahalos_39, Topper_39, Rosmarinus_39, Dalmuri_39, Jarvi_39, Homura_39, Joy99_39, CallaLilly_41
- Track 6 : KiSi_41, Oscar_41, LeMond_41, Scarlett_41
- Track 7 : Validus_40
- Track 8 : Dartin_39, Shaobing_39, Niklas_39, Richo_39, Peanam_39, McMater_39
- Track 9 : Chris_39
- Track 10 : MarkPhew_41
- Track 11 : Chavito_40
- Track 12 : Nibb_39
- Track 13 : Pokerus_38
- Track 14 : Ekdilam_89
- Track 15 : TClif_96
- Track 16 : Marshawn_41
- Track 17 : November_92
- Track 18 : Yuna_41
- Track 19 : DS6A_9

Summary of Final Annotations (See graph section above for start numbers):

The start number called the most often in the published annotations is 1, it was called in 59 of the 61 non-draft genes in the pham.

Genes that call this "Most Annotated" start:

- ActinUp_39, Adephagia_39, Ageofdapage_40, Atiba_39, BGlluviae_39, BarrelRoll_39, Beezoo_39, Bella96_39, Belladonna_39, CREW_39, CallaLilly_41,

Capricorn_39, Chavito_40, Chris_39, Dalmuri_39, Dartin_39, Ekdilam_89, Emerson_40, Geraldini_39, HedwigODU_39, Homura_39, Inky_39, JAWS_39, Jarvi_39, Jayhawk_40, Jeckyll_39, Joy99_39, KiSi_41, LaterM_39, LeMond_41, LindNT_38, Llorens_39, Lunahalos_39, MarkPhew_41, Marshawn_41, McMater_39, MeaningOfLife_39, Murucutumbu_39, Nibb_39, Niklas_39, November_92, Oscar_41, Padpat_40, Peanam_39, Peel_39, Pokerus_38, Prithvi_38, Ramen_39, Rapunzel97_39, Richo_39, Rosmarinus_39, Scarlett_41, Shaobing_39, Slimphazie_39, Spock_39, TClif_96, Tachez_39, Topper_39, TreyKay_38, TruffulaTree_39, Twitch_39, Validus_40, Veliki_39, YoureAdopted_37, Yuna_41,

Genes that have the "Most Annotated" start but do not call it:

-

Genes that do not have the "Most Annotated" start:

- DS6A_9, Settecandela_202,

Summary by start number:

Start 1:

- Found in 65 of 67 (97.0%) of genes in pham
- Manual Annotations of this start: 59 of 61
- Called 100.0% of time when present
- Phage (with cluster) where this start called: ActinUp_39 (K1), Adephagia_39 (K1), Ageofdapage_40 (K1), Atiba_39 (K1), BGIlluviae_39 (K1), BarrelRoll_39 (K1), Beezoo_39 (K1), Bella96_39 (K1), Belladonna_39 (K1), CREW_39 (K1), CallaLilly_41 (K1), Capricorn_39 (K1), Chavito_40 (K1), Chris_39 (K1), Dalmuri_39 (K1), Dartin_39 (K1), Ekdilam_89 (K6), Emerson_40 (K1), Geraldini_39 (K1), HedwigODU_39 (K1), Homura_39 (K1), Inky_39 (K1), JAWS_39 (K1), Jarvi_39 (K1), Jayhawk_40 (K1), Jeckyll_39 (K1), Joy99_39 (K1), KiSi_41 (K1), LaterM_39 (K1), LeMond_41 (K1), LindNT_38 (K1), Llorens_39 (K1), Lunahalos_39 (K1), MarkPhew_41 (K1), Marshawn_41 (K6), McMater_39 (K1), MeaningOfLife_39 (K1), Murucutumbu_39 (K1), Nibb_39 (K1), Niklas_39 (K1), November_92 (K6), Oscar_41 (K1), Padpat_40 (K1), Peanam_39 (K1), Peel_39 (K1), Pokerus_38 (K1), Prithvi_38 (K1), Ramen_39 (K1), Rapunzel97_39 (K1), Richo_39 (K1), Rosmarinus_39 (K1), Scarlett_41 (K1), Shaobing_39 (K1), Slimphazie_39 (K1), Spock_39 (K1), TClif_96 (K6), Tachez_39 (K1), Topper_39 (K1), TreyKay_38 (K1), TruffulaTree_39 (K1), Twitch_39 (K1), Validus_40 (K1), Veliki_39 (K1), YoureAdopted_37 (K1), Yuna_41 (K6),

Start 2:

- Found in 1 of 67 (1.5%) of genes in pham
- Manual Annotations of this start: 1 of 61
- Called 100.0% of time when present
- Phage (with cluster) where this start called: DS6A_9 (singleton),

Start 3:

- Found in 2 of 67 (3.0%) of genes in pham
- Manual Annotations of this start: 1 of 61
- Called 50.0% of time when present
- Phage (with cluster) where this start called: Settecandela_202 (AA),

Summary by clusters:

There are 4 clusters represented in this pham: AA, K1, K6, singleton,

Info for manual annotations of cluster AA:

- Start number 3 was manually annotated 1 time for cluster AA.

Info for manual annotations of cluster K1:

- Start number 1 was manually annotated 55 times for cluster K1.

Info for manual annotations of cluster K6:

- Start number 1 was manually annotated 4 times for cluster K6.

Gene Information:

Gene: ActinUp_39 Start: 31347, Stop: 31745, Start Num: 1

Candidate Starts for ActinUp_39:

(Start: 1 @31347 has 59 MA's), (7, 31422), (19, 31527), (25, 31572),

Gene: Adephagia_39 Start: 31344, Stop: 31742, Start Num: 1

Candidate Starts for Adephagia_39:

(Start: 1 @31344 has 59 MA's), (7, 31419), (19, 31524), (25, 31569),

Gene: Ageofdapage_40 Start: 31306, Stop: 31704, Start Num: 1

Candidate Starts for Ageofdapage_40:

(Start: 1 @31306 has 59 MA's), (7, 31381), (13, 31435), (19, 31486), (25, 31531), (36, 31612),

Gene: Atiba_39 Start: 31307, Stop: 31705, Start Num: 1

Candidate Starts for Atiba_39:

(Start: 1 @31307 has 59 MA's), (7, 31382), (19, 31487), (25, 31532),

Gene: BGlluviae_39 Start: 31463, Stop: 31861, Start Num: 1

Candidate Starts for BGlluviae_39:

(Start: 1 @31463 has 59 MA's), (7, 31538), (19, 31643), (25, 31688), (36, 31769),

Gene: BarrelRoll_39 Start: 31330, Stop: 31728, Start Num: 1

Candidate Starts for BarrelRoll_39:

(Start: 1 @31330 has 59 MA's), (7, 31405), (19, 31510), (25, 31555),

Gene: Beezoo_39 Start: 31354, Stop: 31752, Start Num: 1

Candidate Starts for Beezoo_39:

(Start: 1 @31354 has 59 MA's), (7, 31429), (19, 31534), (25, 31579), (36, 31660),

Gene: Bella96_39 Start: 31246, Stop: 31644, Start Num: 1

Candidate Starts for Bella96_39:

(Start: 1 @31246 has 59 MA's), (7, 31321), (13, 31375), (19, 31426), (25, 31471), (36, 31552),

Gene: Belladonna_39 Start: 31463, Stop: 31861, Start Num: 1

Candidate Starts for Belladonna_39:

(Start: 1 @31463 has 59 MA's), (7, 31538), (19, 31643), (25, 31688), (36, 31769),

Gene: CREW_39 Start: 31463, Stop: 31861, Start Num: 1

Candidate Starts for CREW_39:

(Start: 1 @31463 has 59 MA's), (7, 31538), (19, 31643), (25, 31688), (36, 31769),

Gene: CallaLilly_41 Start: 31386, Stop: 31784, Start Num: 1

Candidate Starts for CallaLilly_41:

(Start: 1 @31386 has 59 MA's), (7, 31461), (19, 31566), (25, 31611), (36, 31692),

Gene: Capricorn_39 Start: 31463, Stop: 31861, Start Num: 1

Candidate Starts for Capricorn_39:

(Start: 1 @31463 has 59 MA's), (7, 31538), (19, 31643), (25, 31688), (36, 31769),

Gene: Chavito_40 Start: 30572, Stop: 30979, Start Num: 1

Candidate Starts for Chavito_40:

(Start: 1 @30572 has 59 MA's), (4, 30596), (7, 30647), (14, 30719), (19, 30752), (22, 30788), (26, 30806), (36, 30881),

Gene: Chris_39 Start: 30467, Stop: 30829, Start Num: 1

Candidate Starts for Chris_39:

(Start: 1 @30467 has 59 MA's), (4, 30488), (16, 30617), (18, 30635), (19, 30644), (25, 30683), (26, 30689), (31, 30710), (36, 30746), (37, 30773),

Gene: DS6A_9 Start: 7366, Stop: 6980, Start Num: 2

Candidate Starts for DS6A_9:

(Start: 2 @7366 has 1 MA's), (6, 7297), (10, 7270), (18, 7189), (24, 7144), (28, 7129), (39, 7021),

Gene: Dalmuri_39 Start: 31463, Stop: 31861, Start Num: 1

Candidate Starts for Dalmuri_39:

(Start: 1 @31463 has 59 MA's), (7, 31538), (19, 31643), (25, 31688), (36, 31769),

Gene: Dartin_39 Start: 29958, Stop: 30365, Start Num: 1

Candidate Starts for Dartin_39:

(Start: 1 @29958 has 59 MA's), (4, 29982), (7, 30033), (19, 30138), (22, 30174), (26, 30192), (36, 30267),

Gene: Ekdilam_89 Start: 60072, Stop: 60452, Start Num: 1

Candidate Starts for Ekdilam_89:

(Start: 1 @60072 has 59 MA's), (4, 60093), (5, 60129), (7, 60144), (19, 60249), (22, 60285), (23, 60291), (36, 60369),

Gene: Emerson_40 Start: 31338, Stop: 31736, Start Num: 1

Candidate Starts for Emerson_40:

(Start: 1 @31338 has 59 MA's), (7, 31413), (19, 31518), (25, 31563),

Gene: Geraldini_39 Start: 31440, Stop: 31838, Start Num: 1

Candidate Starts for Geraldini_39:

(Start: 1 @31440 has 59 MA's), (7, 31515), (19, 31620), (25, 31665),

Gene: HedwigODU_39 Start: 31347, Stop: 31745, Start Num: 1

Candidate Starts for HedwigODU_39:

(Start: 1 @31347 has 59 MA's), (7, 31422), (19, 31527), (25, 31572),

Gene: Homura_39 Start: 31463, Stop: 31861, Start Num: 1

Candidate Starts for Homura_39:

(Start: 1 @31463 has 59 MA's), (7, 31538), (19, 31643), (25, 31688), (36, 31769),

Gene: Inky_39 Start: 31463, Stop: 31861, Start Num: 1
Candidate Starts for Inky_39:
(Start: 1 @31463 has 59 MA's), (7, 31538), (19, 31643), (25, 31688), (36, 31769),

Gene: JAWS_39 Start: 31333, Stop: 31731, Start Num: 1
Candidate Starts for JAWS_39:
(Start: 1 @31333 has 59 MA's), (7, 31408), (19, 31513), (25, 31558),

Gene: Jarvi_39 Start: 31463, Stop: 31861, Start Num: 1
Candidate Starts for Jarvi_39:
(Start: 1 @31463 has 59 MA's), (7, 31538), (19, 31643), (25, 31688), (36, 31769),

Gene: Jayhawk_40 Start: 31345, Stop: 31743, Start Num: 1
Candidate Starts for Jayhawk_40:
(Start: 1 @31345 has 59 MA's), (7, 31420), (19, 31525), (25, 31570),

Gene: Jeckyll_39 Start: 31463, Stop: 31861, Start Num: 1
Candidate Starts for Jeckyll_39:
(Start: 1 @31463 has 59 MA's), (7, 31538), (19, 31643), (25, 31688), (36, 31769),

Gene: Joy99_39 Start: 31392, Stop: 31790, Start Num: 1
Candidate Starts for Joy99_39:
(Start: 1 @31392 has 59 MA's), (7, 31467), (19, 31572), (25, 31617), (36, 31698),

Gene: KiSi_41 Start: 30645, Stop: 31028, Start Num: 1
Candidate Starts for KiSi_41:
(Start: 1 @30645 has 59 MA's), (21, 30831), (25, 30864), (26, 30870), (30, 30888), (36, 30945),

Gene: LaterM_39 Start: 31293, Stop: 31691, Start Num: 1
Candidate Starts for LaterM_39:
(Start: 1 @31293 has 59 MA's), (7, 31368), (13, 31422), (19, 31473), (25, 31518), (36, 31599),

Gene: LeMond_41 Start: 30716, Stop: 31099, Start Num: 1
Candidate Starts for LeMond_41:
(Start: 1 @30716 has 59 MA's), (21, 30902), (25, 30935), (26, 30941), (30, 30959), (36, 31016),

Gene: LindNT_38 Start: 30506, Stop: 30904, Start Num: 1
Candidate Starts for LindNT_38:
(Start: 1 @30506 has 59 MA's), (7, 30581), (13, 30635), (19, 30686), (25, 30731), (36, 30812),

Gene: Llorens_39 Start: 31463, Stop: 31861, Start Num: 1
Candidate Starts for Llorens_39:
(Start: 1 @31463 has 59 MA's), (7, 31538), (19, 31643), (25, 31688), (36, 31769),

Gene: Lunahalos_39 Start: 31463, Stop: 31861, Start Num: 1
Candidate Starts for Lunahalos_39:
(Start: 1 @31463 has 59 MA's), (7, 31538), (19, 31643), (25, 31688), (36, 31769),

Gene: MarkPhew_41 Start: 30593, Stop: 30955, Start Num: 1
Candidate Starts for MarkPhew_41:
(Start: 1 @30593 has 59 MA's), (4, 30614), (13, 30719), (21, 30776), (25, 30809), (31, 30836), (36, 30872), (37, 30899),

Gene: Marshawn_41 Start: 30882, Stop: 31244, Start Num: 1

Candidate Starts for Marshawn_41:

(Start: 1 @30882 has 59 MA's), (4, 30903), (25, 31098), (31, 31125), (36, 31161), (37, 31188),

Gene: McMater_39 Start: 29958, Stop: 30365, Start Num: 1

Candidate Starts for McMater_39:

(Start: 1 @29958 has 59 MA's), (4, 29982), (7, 30033), (19, 30138), (22, 30174), (26, 30192), (36, 30267),

Gene: MeaningOfLife_39 Start: 31325, Stop: 31723, Start Num: 1

Candidate Starts for MeaningOfLife_39:

(Start: 1 @31325 has 59 MA's), (7, 31400), (13, 31454), (19, 31505), (25, 31550), (36, 31631),

Gene: Murucutumbu_39 Start: 31387, Stop: 31785, Start Num: 1

Candidate Starts for Murucutumbu_39:

(Start: 1 @31387 has 59 MA's), (7, 31462), (13, 31516), (19, 31567), (25, 31612), (36, 31693),

Gene: Nibb_39 Start: 29996, Stop: 30358, Start Num: 1

Candidate Starts for Nibb_39:

(Start: 1 @29996 has 59 MA's), (4, 30017), (5, 30053), (15, 30143), (19, 30173), (21, 30179), (25, 30212), (31, 30239), (34, 30257), (35, 30269), (36, 30275), (37, 30302),

Gene: Niklas_39 Start: 29961, Stop: 30368, Start Num: 1

Candidate Starts for Niklas_39:

(Start: 1 @29961 has 59 MA's), (4, 29985), (7, 30036), (19, 30141), (22, 30177), (26, 30195), (36, 30270),

Gene: November_92 Start: 59817, Stop: 60197, Start Num: 1

Candidate Starts for November_92:

(Start: 1 @59817 has 59 MA's), (4, 59838), (5, 59874), (7, 59889), (19, 59994), (22, 60030), (26, 60048), (31, 60069), (33, 60087), (36, 60114),

Gene: Oscar_41 Start: 30727, Stop: 31110, Start Num: 1

Candidate Starts for Oscar_41:

(Start: 1 @30727 has 59 MA's), (21, 30913), (25, 30946), (26, 30952), (30, 30970), (36, 31027),

Gene: Padpat_40 Start: 31338, Stop: 31736, Start Num: 1

Candidate Starts for Padpat_40:

(Start: 1 @31338 has 59 MA's), (7, 31413), (19, 31518), (25, 31563),

Gene: Peanam_39 Start: 29958, Stop: 30365, Start Num: 1

Candidate Starts for Peanam_39:

(Start: 1 @29958 has 59 MA's), (4, 29982), (7, 30033), (19, 30138), (22, 30174), (26, 30192), (36, 30267),

Gene: Peel_39 Start: 31465, Stop: 31863, Start Num: 1

Candidate Starts for Peel_39:

(Start: 1 @31465 has 59 MA's), (7, 31540), (19, 31645), (25, 31690), (36, 31771),

Gene: Pokerus_38 Start: 31380, Stop: 31778, Start Num: 1

Candidate Starts for Pokerus_38:

(Start: 1 @31380 has 59 MA's), (7, 31455), (11, 31485), (19, 31560), (25, 31605),

Gene: Prithvi_38 Start: 30506, Stop: 30904, Start Num: 1
Candidate Starts for Prithvi_38:
(Start: 1 @30506 has 59 MA's), (7, 30581), (13, 30635), (19, 30686), (25, 30731), (36, 30812),

Gene: Ramen_39 Start: 31345, Stop: 31743, Start Num: 1
Candidate Starts for Ramen_39:
(Start: 1 @31345 has 59 MA's), (7, 31420), (19, 31525), (25, 31570),

Gene: Rapunzel97_39 Start: 31345, Stop: 31743, Start Num: 1
Candidate Starts for Rapunzel97_39:
(Start: 1 @31345 has 59 MA's), (7, 31420), (19, 31525), (25, 31570),

Gene: Richo_39 Start: 29958, Stop: 30365, Start Num: 1
Candidate Starts for Richo_39:
(Start: 1 @29958 has 59 MA's), (4, 29982), (7, 30033), (19, 30138), (22, 30174), (26, 30192), (36, 30267),

Gene: Rosmarinus_39 Start: 31451, Stop: 31849, Start Num: 1
Candidate Starts for Rosmarinus_39:
(Start: 1 @31451 has 59 MA's), (7, 31526), (19, 31631), (25, 31676), (36, 31757),

Gene: Scarlett_41 Start: 30718, Stop: 31101, Start Num: 1
Candidate Starts for Scarlett_41:
(Start: 1 @30718 has 59 MA's), (21, 30904), (25, 30937), (26, 30943), (30, 30961), (36, 31018),

Gene: Settecandela_202 Start: 126224, Stop: 126619, Start Num: 3
Candidate Starts for Settecandela_202:
(Start: 3 @126224 has 1 MA's), (7, 126287), (9, 126302), (12, 126323), (20, 126395), (28, 126455), (29, 126458), (32, 126476),

Gene: Shaobing_39 Start: 29958, Stop: 30365, Start Num: 1
Candidate Starts for Shaobing_39:
(Start: 1 @29958 has 59 MA's), (4, 29982), (7, 30033), (19, 30138), (22, 30174), (26, 30192), (36, 30267),

Gene: Slimphazie_39 Start: 31345, Stop: 31743, Start Num: 1
Candidate Starts for Slimphazie_39:
(Start: 1 @31345 has 59 MA's), (7, 31420), (19, 31525), (25, 31570),

Gene: Spock_39 Start: 31463, Stop: 31861, Start Num: 1
Candidate Starts for Spock_39:
(Start: 1 @31463 has 59 MA's), (7, 31538), (19, 31643), (25, 31688), (36, 31769),

Gene: TClif_96 Start: 59347, Stop: 59703, Start Num: 1
Candidate Starts for TClif_96:
(Start: 1 @59347 has 59 MA's), (Start: 3 @59356 has 1 MA's), (4, 59368), (5, 59404), (7, 59419), (19, 59521), (31, 59587), (35, 59611),

Gene: Tachez_39 Start: 31307, Stop: 31705, Start Num: 1
Candidate Starts for Tachez_39:
(Start: 1 @31307 has 59 MA's), (7, 31382), (19, 31487), (25, 31532),

Gene: Topper_39 Start: 31463, Stop: 31861, Start Num: 1

Candidate Starts for Topper_39:

(Start: 1 @31463 has 59 MA's), (7, 31538), (19, 31643), (25, 31688), (36, 31769),

Gene: TreyKay_38 Start: 30506, Stop: 30904, Start Num: 1

Candidate Starts for TreyKay_38:

(Start: 1 @30506 has 59 MA's), (7, 30581), (13, 30635), (19, 30686), (25, 30731), (36, 30812),

Gene: TruffulaTree_39 Start: 31341, Stop: 31739, Start Num: 1

Candidate Starts for TruffulaTree_39:

(Start: 1 @31341 has 59 MA's), (7, 31416), (19, 31521), (25, 31566),

Gene: Twitch_39 Start: 31465, Stop: 31863, Start Num: 1

Candidate Starts for Twitch_39:

(Start: 1 @31465 has 59 MA's), (7, 31540), (19, 31645), (25, 31690), (36, 31771),

Gene: Validus_40 Start: 29887, Stop: 30282, Start Num: 1

Candidate Starts for Validus_40:

(Start: 1 @29887 has 59 MA's), (5, 29947), (7, 29962), (19, 30067), (22, 30097), (26, 30109), (37, 30211), (40, 30265),

Gene: Veliki_39 Start: 31381, Stop: 31779, Start Num: 1

Candidate Starts for Veliki_39:

(Start: 1 @31381 has 59 MA's), (7, 31456), (19, 31561), (25, 31606),

Gene: YoureAdopted_37 Start: 30594, Stop: 30992, Start Num: 1

Candidate Starts for YoureAdopted_37:

(Start: 1 @30594 has 59 MA's), (7, 30669), (19, 30774), (25, 30819),

Gene: Yuna_41 Start: 30837, Stop: 31217, Start Num: 1

Candidate Starts for Yuna_41:

(Start: 1 @30837 has 59 MA's), (4, 30861), (5, 30897), (7, 30912), (8, 30915), (17, 30993), (19, 31017), (27, 31065), (30, 31077), (36, 31134), (38, 31176),