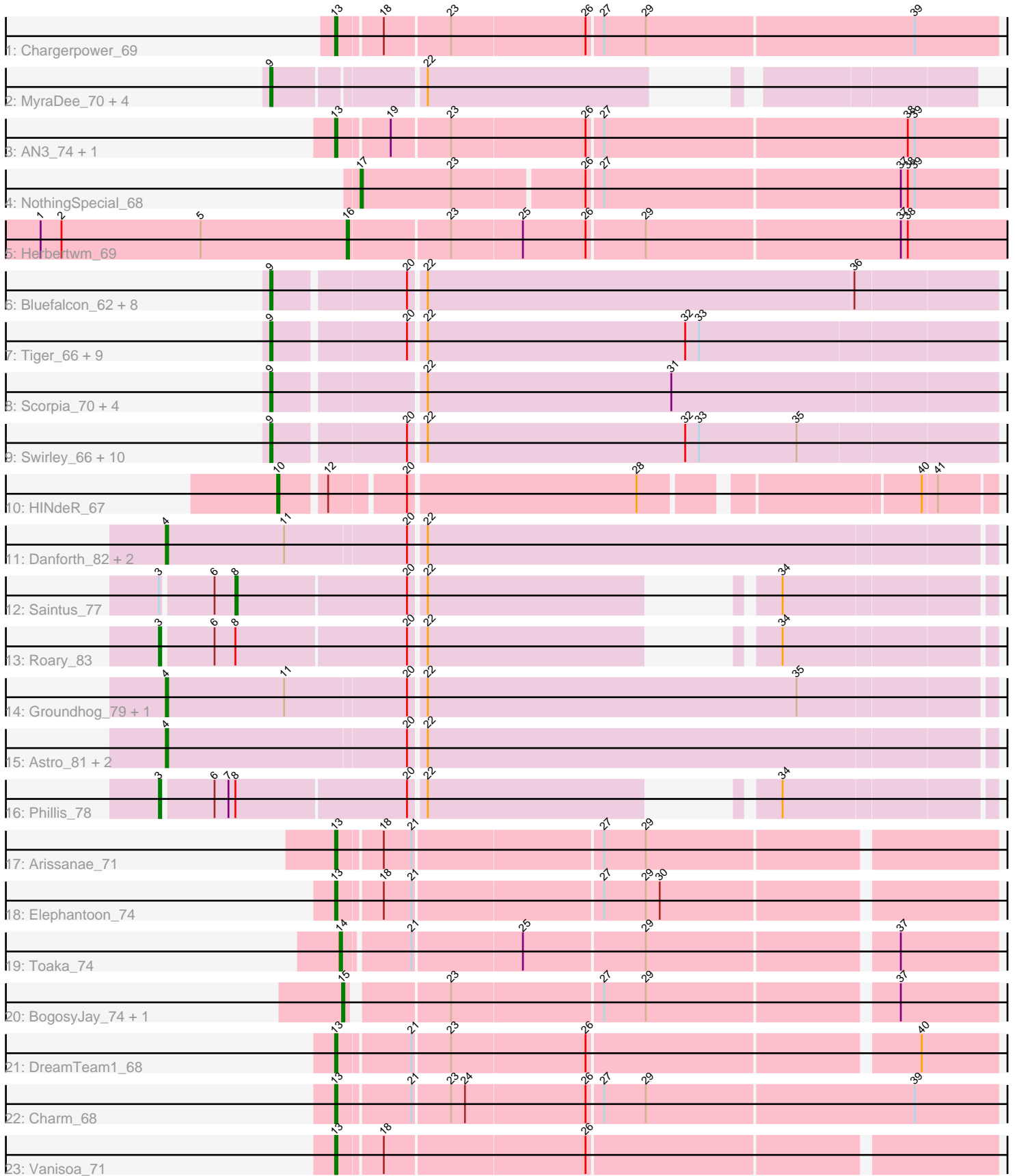


Pham 216156



Note: Tracks are now grouped by subcluster and scaled. Switching in subcluster is indicated by changes in track color. Track scale is now set by default to display the region 30 bp upstream of start 1 to 30 bp downstream of the last possible start. If this default region is judged to be packed too tightly with annotated starts, the track will be further scaled to only show that region of the ORF with annotated starts. This action will be indicated by adding "Zoomed" to the title. For starts, yellow indicates the location of called starts comprised solely of Glimmer/GeneMark auto-annotations, green indicates the location of called starts with at least 1 manual gene annotation.

Pham 216156 Report

This analysis was run 02/22/25 on database version 588.

Pham number 216156 has 65 members, 2 are drafts.

Phages represented in each track:

- Track 1 : Chargerpower_69
- Track 2 : MyraDee_70, EITiger69_72, Jabiru_68, Airmid_69, UnionJack_70
- Track 3 : AN3_74, VA6_72
- Track 4 : NothingSpecial_68
- Track 5 : Herbertwm_69
- Track 6 : Bluefalcon_62, Midas2_63, Coog_63, Theia_65, Cuco_65, Ghoulboy_66, Zolita_65, SydNat_66, Archetta_64
- Track 7 : Tiger_66, AgentM_66, Aragog_66, Phlorence_65, Discoknowium_64, PickleBack_67, Jovo_67, Lev2_67, Conspiracy_67, ForGetIt_67
- Track 8 : Scorpia_70, Benedict_70, PetterN_74, Chadwick_70, Naca_69
- Track 9 : Swirley_66, Bonamassa_66, LittleCherry_65, Prinashe11_64, Micasa_66, Milcery_66, MarysWell_66, HuhtaEnerson15_64, Dublin_66, Tarynearal_65, Twigg_63
- Track 10 : HINdeR_67
- Track 11 : Danforth_82, Stephig9_80, NearlyHeadless_82
- Track 12 : Saintus_77
- Track 13 : Roary_83
- Track 14 : Groundhog_79, Smeadley_81
- Track 15 : Astro_81, Dixon_80, Expelliarmus_78
- Track 16 : Phillis_78
- Track 17 : Arissanae_71
- Track 18 : Elephantoon_74
- Track 19 : Toaka_74
- Track 20 : BogosyJay_74, Maminiaina_74
- Track 21 : DreamTeam1_68
- Track 22 : Charm_68
- Track 23 : Vanisoa_71

Summary of Final Annotations (See graph section above for start numbers):

The start number called the most often in the published annotations is 9, it was called in 38 of the 63 non-draft genes in the pham.

Genes that call this "Most Annotated" start:

- AgentM_66, Airmid_69, Aragog_66, Archetta_64, Benedict_70, Bluefalcon_62, Bonamassa_66, Chadwick_70, Conspiracy_67, Coog_63, Cuco_65, Discoknowium_64, Dublin_66, ElTiger69_72, ForGetIt_67, Ghouboy_66, HuhtaEnerson15_64, Jabiru_68, Jovo_67, Lev2_67, LittleCherry_65, MarysWell_66, Micasa_66, Midas2_63, Milcery_66, MyraDee_70, Naca_69, PetterN_74, Phlorence_65, PickleBack_67, Prinash11_64, Scorpia_70, Swirley_66, SydNat_66, Tarynearal_65, Theia_65, Tiger_66, Twigg_63, UnionJack_70, Zolita_65,

Genes that have the "Most Annotated" start but do not call it:

-

Genes that do not have the "Most Annotated" start:

- AN3_74, Arissanae_71, Astro_81, BogosyJay_74, Chargerpower_69, Charm_68, Danforth_82, Dixon_80, DreamTeam1_68, Elephantoon_74, Expelliarmus_78, Groundhog_79, HINdeR_67, Herbertwm_69, Maminina_74, NearlyHeadless_82, NothingSpecial_68, Phillis_78, Roary_83, Saintus_77, Smeadley_81, Stephig9_80, Toaka_74, VA6_72, Vanisoa_71,

Summary by start number:

Start 3:

- Found in 3 of 65 (4.6%) of genes in pham
- Manual Annotations of this start: 2 of 63
- Called 66.7% of time when present
- Phage (with cluster) where this start called: Phillis_78 (A8), Roary_83 (A8),

Start 4:

- Found in 8 of 65 (12.3%) of genes in pham
- Manual Annotations of this start: 8 of 63
- Called 100.0% of time when present
- Phage (with cluster) where this start called: Astro_81 (A8), Danforth_82 (A8), Dixon_80 (A8), Expelliarmus_78 (A8), Groundhog_79 (A8), NearlyHeadless_82 (A8), Smeadley_81 (A8), Stephig9_80 (A8),

Start 8:

- Found in 3 of 65 (4.6%) of genes in pham
- Manual Annotations of this start: 1 of 63
- Called 33.3% of time when present
- Phage (with cluster) where this start called: Saintus_77 (A8),

Start 9:

- Found in 40 of 65 (61.5%) of genes in pham
- Manual Annotations of this start: 38 of 63
- Called 100.0% of time when present
- Phage (with cluster) where this start called: AgentM_66 (A5), Airmid_69 (A5), Aragog_66 (A5), Archetta_64 (A5), Benedict_70 (A5), Bluefalcon_62 (A5), Bonamassa_66 (A5), Chadwick_70 (A5), Conspiracy_67 (A5), Coog_63 (A5), Cuco_65 (A5), Discoknowium_64 (A5), Dublin_66 (A5), ElTiger69_72 (A5), ForGetIt_67 (A5), Ghouboy_66 (A5), HuhtaEnerson15_64 (A5), Jabiru_68 (A5), Jovo_67 (A5), Lev2_67 (A5), LittleCherry_65 (A5), MarysWell_66 (A5), Micasa_66 (A5), Midas2_63 (A5), Milcery_66 (A5), MyraDee_70 (A18), Naca_69 (A5), PetterN_74 (A5), Phlorence_65 (A5), PickleBack_67 (A5), Prinash11_64 (A5), Scorpia_70 (A5), Swirley_66 (A5), SydNat_66 (A5), Tarynearal_65 (A5), Theia_65

(A5), Tiger_66 (A5), Twigg_63 (A5), UnionJack_70 (A5), Zolita_65 (A5),

Start 10:

- Found in 1 of 65 (1.5%) of genes in pham
- Manual Annotations of this start: 1 of 63
- Called 100.0% of time when present
- Phage (with cluster) where this start called: HINdeR_67 (A7),

Start 13:

- Found in 8 of 65 (12.3%) of genes in pham
- Manual Annotations of this start: 8 of 63
- Called 100.0% of time when present
- Phage (with cluster) where this start called: AN3_74 (A2), Arissanae_71 (A9), Chargerpower_69 (A), Charm_68 (A9), DreamTeam1_68 (A9), Elephantoon_74 (A9), VA6_72 (A2), Vanisoa_71 (A9),

Start 14:

- Found in 1 of 65 (1.5%) of genes in pham
- Manual Annotations of this start: 1 of 63
- Called 100.0% of time when present
- Phage (with cluster) where this start called: Toaka_74 (A9),

Start 15:

- Found in 2 of 65 (3.1%) of genes in pham
- Manual Annotations of this start: 2 of 63
- Called 100.0% of time when present
- Phage (with cluster) where this start called: BogosyJay_74 (A9), Maminiaina_74 (A9),

Start 16:

- Found in 1 of 65 (1.5%) of genes in pham
- Manual Annotations of this start: 1 of 63
- Called 100.0% of time when present
- Phage (with cluster) where this start called: Herbertwm_69 (A2),

Start 17:

- Found in 1 of 65 (1.5%) of genes in pham
- Manual Annotations of this start: 1 of 63
- Called 100.0% of time when present
- Phage (with cluster) where this start called: NothingSpecial_68 (A2),

Summary by clusters:

There are 7 clusters represented in this pham: A, A18, A2, A5, A7, A9, A8,

Info for manual annotations of cluster A:

- Start number 13 was manually annotated 1 time for cluster A.

Info for manual annotations of cluster A18:

- Start number 9 was manually annotated 1 time for cluster A18.

Info for manual annotations of cluster A2:

- Start number 13 was manually annotated 2 times for cluster A2.

- Start number 16 was manually annotated 1 time for cluster A2.
- Start number 17 was manually annotated 1 time for cluster A2.

Info for manual annotations of cluster A5:

- Start number 9 was manually annotated 37 times for cluster A5.

Info for manual annotations of cluster A7:

- Start number 10 was manually annotated 1 time for cluster A7.

Info for manual annotations of cluster A8:

- Start number 3 was manually annotated 2 times for cluster A8.
- Start number 4 was manually annotated 8 times for cluster A8.
- Start number 8 was manually annotated 1 time for cluster A8.

Info for manual annotations of cluster A9:

- Start number 13 was manually annotated 5 times for cluster A9.
- Start number 14 was manually annotated 1 time for cluster A9.
- Start number 15 was manually annotated 2 times for cluster A9.

Gene Information:

Gene: AN3_74 Start: 42283, Stop: 42008, Start Num: 13

Candidate Starts for AN3_74:

(Start: 13 @42283 has 8 MA's), (19, 42262), (23, 42238), (26, 42181), (27, 42175), (38, 42046), (39, 42043),

Gene: AgentM_66 Start: 41898, Stop: 41596, Start Num: 9

Candidate Starts for AgentM_66:

(Start: 9 @41898 has 38 MA's), (20, 41844), (22, 41838), (32, 41727), (33, 41721),

Gene: Airmid_69 Start: 42731, Stop: 42429, Start Num: 9

Candidate Starts for Airmid_69:

(Start: 9 @42731 has 38 MA's), (22, 42671),

Gene: Aragog_66 Start: 41918, Stop: 41616, Start Num: 9

Candidate Starts for Aragog_66:

(Start: 9 @41918 has 38 MA's), (20, 41864), (22, 41858), (32, 41747), (33, 41741),

Gene: Archetta_64 Start: 41864, Stop: 41562, Start Num: 9

Candidate Starts for Archetta_64:

(Start: 9 @41864 has 38 MA's), (20, 41810), (22, 41804), (36, 41621),

Gene: Arissanae_71 Start: 43153, Stop: 42884, Start Num: 13

Candidate Starts for Arissanae_71:

(Start: 13 @43153 has 8 MA's), (18, 43135), (21, 43123), (27, 43045), (29, 43027),

Gene: Astro_81 Start: 44417, Stop: 44070, Start Num: 4

Candidate Starts for Astro_81:

(Start: 4 @44417 has 8 MA's), (20, 44315), (22, 44309),

Gene: Benedict_70 Start: 42463, Stop: 42161, Start Num: 9

Candidate Starts for Benedict_70:

(Start: 9 @42463 has 38 MA's), (22, 42403), (31, 42298),

Gene: Bluefalcon_62 Start: 41884, Stop: 41582, Start Num: 9

Candidate Starts for Bluefalcon_62:

(Start: 9 @41884 has 38 MA's), (20, 41830), (22, 41824), (36, 41641),

Gene: BogosyJay_74 Start: 43112, Stop: 42849, Start Num: 15

Candidate Starts for BogosyJay_74:

(Start: 15 @43112 has 2 MA's), (23, 43073), (27, 43010), (29, 42992), (37, 42890),

Gene: Bonamassa_66 Start: 42093, Stop: 41791, Start Num: 9

Candidate Starts for Bonamassa_66:

(Start: 9 @42093 has 38 MA's), (20, 42039), (22, 42033), (32, 41922), (33, 41916), (35, 41874),

Gene: Chadwick_70 Start: 42207, Stop: 41905, Start Num: 9

Candidate Starts for Chadwick_70:

(Start: 9 @42207 has 38 MA's), (22, 42147), (31, 42042),

Gene: Chargerpower_69 Start: 41165, Stop: 40890, Start Num: 13

Candidate Starts for Chargerpower_69:

(Start: 13 @41165 has 8 MA's), (18, 41147), (23, 41120), (26, 41063), (27, 41057), (29, 41039), (39, 40925),

Gene: Charm_68 Start: 41975, Stop: 41700, Start Num: 13

Candidate Starts for Charm_68:

(Start: 13 @41975 has 8 MA's), (21, 41945), (23, 41930), (24, 41924), (26, 41873), (27, 41867), (29, 41849), (39, 41735),

Gene: Conspiracy_67 Start: 42140, Stop: 41838, Start Num: 9

Candidate Starts for Conspiracy_67:

(Start: 9 @42140 has 38 MA's), (20, 42086), (22, 42080), (32, 41969), (33, 41963),

Gene: Coog_63 Start: 41911, Stop: 41609, Start Num: 9

Candidate Starts for Coog_63:

(Start: 9 @41911 has 38 MA's), (20, 41857), (22, 41851), (36, 41668),

Gene: Cuco_65 Start: 41771, Stop: 41469, Start Num: 9

Candidate Starts for Cuco_65:

(Start: 9 @41771 has 38 MA's), (20, 41717), (22, 41711), (36, 41528),

Gene: Danforth_82 Start: 44494, Stop: 44147, Start Num: 4

Candidate Starts for Danforth_82:

(Start: 4 @44494 has 8 MA's), (11, 44443), (20, 44392), (22, 44386),

Gene: Discoknowium_64 Start: 41657, Stop: 41355, Start Num: 9

Candidate Starts for Discoknowium_64:

(Start: 9 @41657 has 38 MA's), (20, 41603), (22, 41597), (32, 41486), (33, 41480),

Gene: Dixon_80 Start: 43976, Stop: 43629, Start Num: 4

Candidate Starts for Dixon_80:

(Start: 4 @43976 has 8 MA's), (20, 43874), (22, 43868),

Gene: DreamTeam1_68 Start: 41822, Stop: 41553, Start Num: 13
Candidate Starts for DreamTeam1_68:
(Start: 13 @41822 has 8 MA's), (21, 41792), (23, 41777), (26, 41720), (40, 41585),

Gene: Dublin_66 Start: 42050, Stop: 41748, Start Num: 9
Candidate Starts for Dublin_66:
(Start: 9 @42050 has 38 MA's), (20, 41996), (22, 41990), (32, 41879), (33, 41873), (35, 41831),

Gene: EITiger69_72 Start: 43134, Stop: 42832, Start Num: 9
Candidate Starts for EITiger69_72:
(Start: 9 @43134 has 38 MA's), (22, 43074),

Gene: Elephantoon_74 Start: 42749, Stop: 42480, Start Num: 13
Candidate Starts for Elephantoon_74:
(Start: 13 @42749 has 8 MA's), (18, 42731), (21, 42719), (27, 42641), (29, 42623), (30, 42617),

Gene: Expelliarmus_78 Start: 44190, Stop: 43843, Start Num: 4
Candidate Starts for Expelliarmus_78:
(Start: 4 @44190 has 8 MA's), (20, 44088), (22, 44082),

Gene: ForGetIt_67 Start: 42165, Stop: 41863, Start Num: 9
Candidate Starts for ForGetIt_67:
(Start: 9 @42165 has 38 MA's), (20, 42111), (22, 42105), (32, 41994), (33, 41988),

Gene: Ghouboy_66 Start: 42138, Stop: 41836, Start Num: 9
Candidate Starts for Ghouboy_66:
(Start: 9 @42138 has 38 MA's), (20, 42084), (22, 42078), (36, 41895),

Gene: Groundhog_79 Start: 44246, Stop: 43899, Start Num: 4
Candidate Starts for Groundhog_79:
(Start: 4 @44246 has 8 MA's), (11, 44195), (20, 44144), (22, 44138), (35, 43979),

Gene: HINdeR_67 Start: 45176, Stop: 44895, Start Num: 10
Candidate Starts for HINdeR_67:
(Start: 10 @45176 has 1 MA's), (12, 45158), (20, 45128), (28, 45032), (40, 44924), (41, 44918),

Gene: Herbertwm_69 Start: 43036, Stop: 42749, Start Num: 16
Candidate Starts for Herbertwm_69:
(1, 43168), (2, 43159), (5, 43099), (Start: 16 @43036 has 1 MA's), (23, 42994), (25, 42964), (26, 42937), (29, 42913), (37, 42805), (38, 42802),

Gene: HuhtaEnerson15_64 Start: 41746, Stop: 41444, Start Num: 9
Candidate Starts for HuhtaEnerson15_64:
(Start: 9 @41746 has 38 MA's), (20, 41692), (22, 41686), (32, 41575), (33, 41569), (35, 41527),

Gene: Jabiru_68 Start: 42318, Stop: 42016, Start Num: 9
Candidate Starts for Jabiru_68:
(Start: 9 @42318 has 38 MA's), (22, 42258),

Gene: Jovo_67 Start: 42421, Stop: 42119, Start Num: 9
Candidate Starts for Jovo_67:
(Start: 9 @42421 has 38 MA's), (20, 42367), (22, 42361), (32, 42250), (33, 42244),

Gene: Lev2_67 Start: 42053, Stop: 41751, Start Num: 9

Candidate Starts for Lev2_67:

(Start: 9 @42053 has 38 MA's), (20, 41999), (22, 41993), (32, 41882), (33, 41876),

Gene: LittleCherry_65 Start: 41616, Stop: 41314, Start Num: 9

Candidate Starts for LittleCherry_65:

(Start: 9 @41616 has 38 MA's), (20, 41562), (22, 41556), (32, 41445), (33, 41439), (35, 41397),

Gene: Maminiaina_74 Start: 43094, Stop: 42831, Start Num: 15

Candidate Starts for Maminiaina_74:

(Start: 15 @43094 has 2 MA's), (23, 43055), (27, 42992), (29, 42974), (37, 42872),

Gene: MarysWell_66 Start: 42293, Stop: 41991, Start Num: 9

Candidate Starts for MarysWell_66:

(Start: 9 @42293 has 38 MA's), (20, 42239), (22, 42233), (32, 42122), (33, 42116), (35, 42074),

Gene: Micasa_66 Start: 42015, Stop: 41713, Start Num: 9

Candidate Starts for Micasa_66:

(Start: 9 @42015 has 38 MA's), (20, 41961), (22, 41955), (32, 41844), (33, 41838), (35, 41796),

Gene: Midas2_63 Start: 41911, Stop: 41609, Start Num: 9

Candidate Starts for Midas2_63:

(Start: 9 @41911 has 38 MA's), (20, 41857), (22, 41851), (36, 41668),

Gene: Milcery_66 Start: 41805, Stop: 41503, Start Num: 9

Candidate Starts for Milcery_66:

(Start: 9 @41805 has 38 MA's), (20, 41751), (22, 41745), (32, 41634), (33, 41628), (35, 41586),

Gene: MyraDee_70 Start: 40654, Stop: 40406, Start Num: 9

Candidate Starts for MyraDee_70:

(Start: 9 @40654 has 38 MA's), (22, 40594),

Gene: Naca_69 Start: 43206, Stop: 42904, Start Num: 9

Candidate Starts for Naca_69:

(Start: 9 @43206 has 38 MA's), (22, 43146), (31, 43041),

Gene: NearlyHeadless_82 Start: 44260, Stop: 43913, Start Num: 4

Candidate Starts for NearlyHeadless_82:

(Start: 4 @44260 has 8 MA's), (11, 44209), (20, 44158), (22, 44152),

Gene: NothingSpecial_68 Start: 43574, Stop: 43308, Start Num: 17

Candidate Starts for NothingSpecial_68:

(Start: 17 @43574 has 1 MA's), (23, 43535), (26, 43481), (27, 43475), (37, 43349), (38, 43346), (39, 43343),

Gene: PetterN_74 Start: 42993, Stop: 42691, Start Num: 9

Candidate Starts for PetterN_74:

(Start: 9 @42993 has 38 MA's), (22, 42933), (31, 42828),

Gene: Phillis_78 Start: 43167, Stop: 42865, Start Num: 3

Candidate Starts for Phillis_78:

(Start: 3 @43167 has 2 MA's), (6, 43146), (7, 43140), (Start: 8 @43137 has 1 MA's), (20, 43065), (22, 43059), (34, 42951),

Gene: Phlorence_65 Start: 41798, Stop: 41496, Start Num: 9

Candidate Starts for Phlorence_65:

(Start: 9 @41798 has 38 MA's), (20, 41744), (22, 41738), (32, 41627), (33, 41621),

Gene: PickleBack_67 Start: 41975, Stop: 41673, Start Num: 9

Candidate Starts for PickleBack_67:

(Start: 9 @41975 has 38 MA's), (20, 41921), (22, 41915), (32, 41804), (33, 41798),

Gene: Prin Ashe11_64 Start: 41625, Stop: 41323, Start Num: 9

Candidate Starts for Prin Ashe11_64:

(Start: 9 @41625 has 38 MA's), (20, 41571), (22, 41565), (32, 41454), (33, 41448), (35, 41406),

Gene: Roary_83 Start: 44451, Stop: 44149, Start Num: 3

Candidate Starts for Roary_83:

(Start: 3 @44451 has 2 MA's), (6, 44430), (Start: 8 @44421 has 1 MA's), (20, 44349), (22, 44343), (34, 44235),

Gene: Saintus_77 Start: 41069, Stop: 40797, Start Num: 8

Candidate Starts for Saintus_77:

(Start: 3 @41099 has 2 MA's), (6, 41078), (Start: 8 @41069 has 1 MA's), (20, 40997), (22, 40991), (34, 40883),

Gene: Scorpio_70 Start: 42564, Stop: 42262, Start Num: 9

Candidate Starts for Scorpio_70:

(Start: 9 @42564 has 38 MA's), (22, 42504), (31, 42399),

Gene: Smeadley_81 Start: 44312, Stop: 43965, Start Num: 4

Candidate Starts for Smeadley_81:

(Start: 4 @44312 has 8 MA's), (11, 44261), (20, 44210), (22, 44204), (35, 44045),

Gene: Stephig9_80 Start: 44251, Stop: 43904, Start Num: 4

Candidate Starts for Stephig9_80:

(Start: 4 @44251 has 8 MA's), (11, 44200), (20, 44149), (22, 44143),

Gene: Swirley_66 Start: 41955, Stop: 41653, Start Num: 9

Candidate Starts for Swirley_66:

(Start: 9 @41955 has 38 MA's), (20, 41901), (22, 41895), (32, 41784), (33, 41778), (35, 41736),

Gene: SydNat_66 Start: 42147, Stop: 41845, Start Num: 9

Candidate Starts for SydNat_66:

(Start: 9 @42147 has 38 MA's), (20, 42093), (22, 42087), (36, 41904),

Gene: Tarynearal_65 Start: 41791, Stop: 41489, Start Num: 9

Candidate Starts for Tarynearal_65:

(Start: 9 @41791 has 38 MA's), (20, 41737), (22, 41731), (32, 41620), (33, 41614), (35, 41572),

Gene: Theia_65 Start: 42277, Stop: 41975, Start Num: 9

Candidate Starts for Theia_65:

(Start: 9 @42277 has 38 MA's), (20, 42223), (22, 42217), (36, 42034),

Gene: Tiger_66 Start: 41719, Stop: 41417, Start Num: 9

Candidate Starts for Tiger_66:

(Start: 9 @41719 has 38 MA's), (20, 41665), (22, 41659), (32, 41548), (33, 41542),

Gene: Toaka_74 Start: 43128, Stop: 42862, Start Num: 14

Candidate Starts for Toaka_74:

(Start: 14 @43128 has 1 MA's), (21, 43101), (25, 43056), (29, 43005), (37, 42903),

Gene: Twigg_63 Start: 41603, Stop: 41301, Start Num: 9

Candidate Starts for Twigg_63:

(Start: 9 @41603 has 38 MA's), (20, 41549), (22, 41543), (32, 41432), (33, 41426), (35, 41384),

Gene: UnionJack_70 Start: 42228, Stop: 41926, Start Num: 9

Candidate Starts for UnionJack_70:

(Start: 9 @42228 has 38 MA's), (22, 42168),

Gene: VA6_72 Start: 43461, Stop: 43186, Start Num: 13

Candidate Starts for VA6_72:

(Start: 13 @43461 has 8 MA's), (19, 43440), (23, 43416), (26, 43359), (27, 43353), (38, 43224), (39, 43221),

Gene: Vanisoa_71 Start: 43466, Stop: 43197, Start Num: 13

Candidate Starts for Vanisoa_71:

(Start: 13 @43466 has 8 MA's), (18, 43448), (26, 43364),

Gene: Zolita_65 Start: 42151, Stop: 41849, Start Num: 9

Candidate Starts for Zolita_65:

(Start: 9 @42151 has 38 MA's), (20, 42097), (22, 42091), (36, 41908),