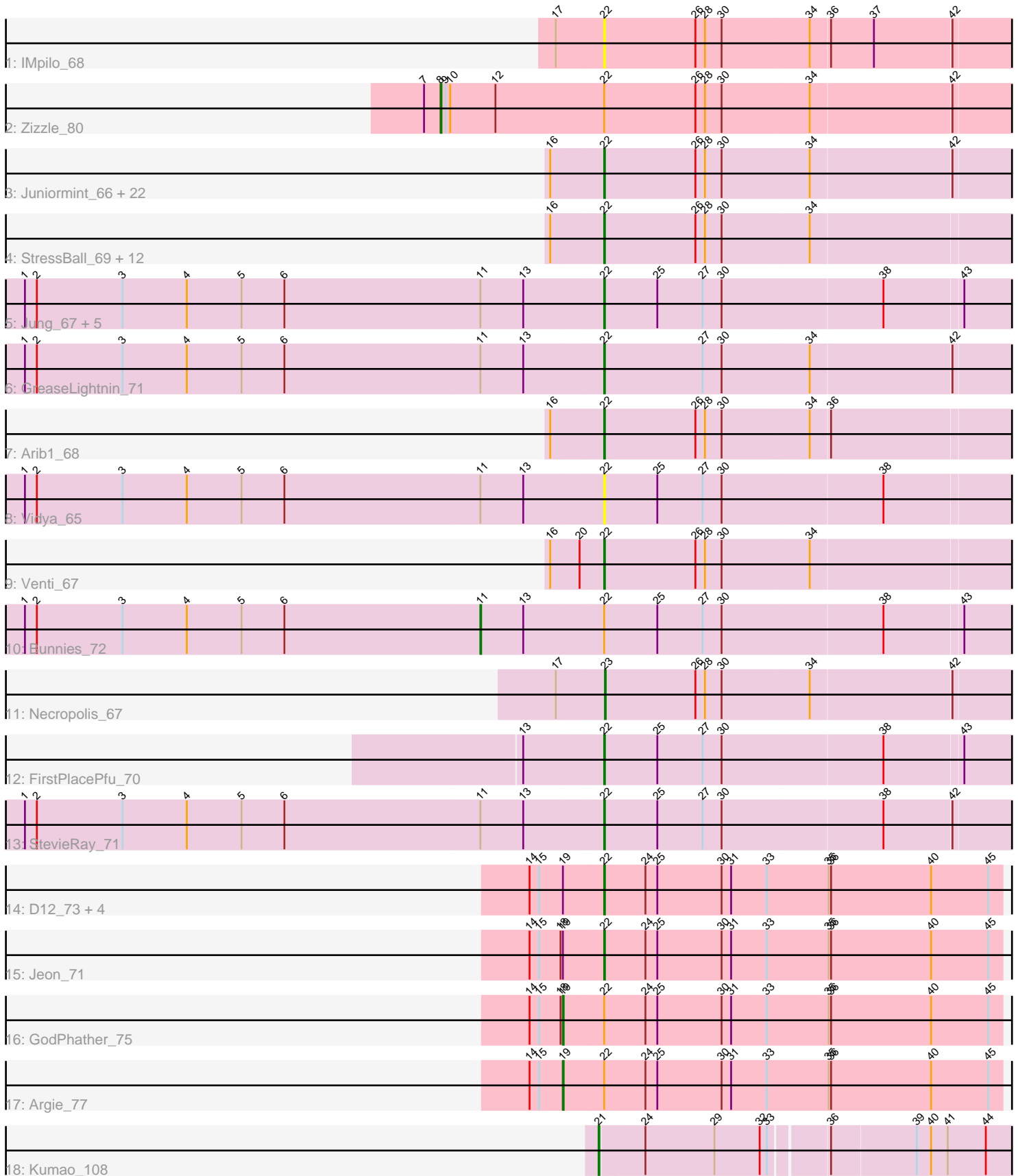


Pham 216180



Note: Tracks are now grouped by subcluster and scaled. Switching in subcluster is indicated by changes in track color. Track scale is now set by default to display the region 30 bp upstream of start 1 to 30 bp downstream of the last possible start. If this default region is judged to be packed too tightly with annotated starts, the track will be further scaled to only show that region of the ORF with annotated starts. This action will be indicated by adding "Zoomed" to the title. For starts, yellow indicates the location of called starts comprised solely of Glimmer/GeneMark auto-annotations, green indicates the location of called starts with at least 1 manual gene annotation.

Pham 216180 Report

This analysis was run 02/22/25 on database version 588.

Pham number 216180 has 61 members, 7 are drafts.

Phages represented in each track:

- Track 1 : IMpilo_68
- Track 2 : Zizzle_80
- Track 3 : Juniormint_66, Xula_62, Malithi_69, Phegasus_72, Bogie_72, HUHilltop_72, Mangethe_72, Pygmy_73, Phineas_70, Polkaroo_70, Camster_70, Sonah_70, Jebeks_67, Techage_70, DillTech15_79, Majeke_72, Zilizebeth_74, Langerak_68, Fishburne_68, Fastidio_72, Donovan_69, Dynamo_69, Shipwreck_72
- Track 4 : StressBall_69, KilKor_70, Kari_66, Glaske_69, CactusJack_70, Bartholomew_65, Phalm_70, Megiddo_69, Totinger_74, Etoile_66, LittleShirley_78, Gavriela_69, Willsammy_71
- Track 5 : Jung_67, Bhagsy_71, Atcoo_68, Thespis_68, Ksquared_70, Brusacoram_68
- Track 6 : GreaseLightnin_71
- Track 7 : Arib1_68
- Track 8 : Vidya_65
- Track 9 : Venti_67
- Track 10 : Bunnies_72
- Track 11 : Necropolis_67
- Track 12 : FirstPlacePfu_70
- Track 13 : StevieRay_71
- Track 14 : D12_73, Megabear_73, PR_74, Taptic_76, Cepens_75
- Track 15 : Jeon_71
- Track 16 : GodPhather_75
- Track 17 : Argie_77
- Track 18 : Kumao_108

Summary of Final Annotations (See graph section above for start numbers):

The start number called the most often in the published annotations is 22, it was called in 48 of the 54 non-draft genes in the pham.

Genes that call this "Most Annotated" start:

- Arib1_68, Atcoo_68, Bartholomew_65, Bhagsy_71, Bogie_72, Brusacoram_68, CactusJack_70, Camster_70, Cepens_75, D12_73, DillTech15_79, Donovan_69, Dynamo_69, Etoile_66, Fastidio_72, FirstPlacePfu_70, Fishburne_68, Gavriela_69,

Glasko_69, GreaseLightnin_71, HUHilltop_72, IMpilo_68, Jebeks_67, Jeon_71, Jung_67, Juniormint_66, Kari_66, KilKor_70, Ksquared_70, Langerak_68, LittleShirley_78, Majeke_72, Malithi_69, Mangethe_72, Megabear_73, Megiddo_69, PR_74, Phalm_70, Phegasus_72, Phineas_70, Polkaroo_70, Pygmy_73, Shipwreck_72, Sonah_70, StevieRay_71, StressBall_69, Taptic_76, Techage_70, Thespis_68, Totinger_74, Venti_67, Vidya_65, Willsammy_71, Xula_62, Zilizebeth_74,

Genes that have the "Most Annotated" start but do not call it:

- Argie_77, Bunnies_72, GodPhather_75, Zizzle_80,

Genes that do not have the "Most Annotated" start:

- Kumao_108, Necropolis_67,

Summary by start number:

Start 8:

- Found in 1 of 61 (1.6%) of genes in pham
- Manual Annotations of this start: 1 of 54
- Called 100.0% of time when present
- Phage (with cluster) where this start called: Zizzle_80 (F1),

Start 11:

- Found in 10 of 61 (16.4%) of genes in pham
- Manual Annotations of this start: 1 of 54
- Called 10.0% of time when present
- Phage (with cluster) where this start called: Bunnies_72 (P1),

Start 19:

- Found in 8 of 61 (13.1%) of genes in pham
- Manual Annotations of this start: 2 of 54
- Called 25.0% of time when present
- Phage (with cluster) where this start called: Argie_77 (W), GodPhather_75 (W),

Start 21:

- Found in 1 of 61 (1.6%) of genes in pham
- Manual Annotations of this start: 1 of 54
- Called 100.0% of time when present
- Phage (with cluster) where this start called: Kumao_108 (singleton),

Start 22:

- Found in 59 of 61 (96.7%) of genes in pham
- Manual Annotations of this start: 48 of 54
- Called 93.2% of time when present
- Phage (with cluster) where this start called: Arib1_68 (P1), Atcoo_68 (P1), Bartholomew_65 (P1), Bhagsy_71 (P1), Bogie_72 (P1), Brusacoram_68 (P1), CactusJack_70 (P1), Camster_70 (P1), Cepens_75 (W), D12_73 (W), DillTech15_79 (F1), Donovan_69 (P1), Dynamo_69 (P1), Etoile_66 (P1), Fastidio_72 (F1), FirstPlacePfu_70 (P1), Fishburne_68 (P1), Gavriela_69 (P1), Glasko_69 (P1), GreaseLightnin_71 (P1), HUHilltop_72 (P1), IMpilo_68 (F1), Jebeks_67 (P1), Jeon_71 (W), Jung_67 (P1), Juniormint_66 (P1), Kari_66 (P1), KilKor_70 (P1), Ksquared_70 (P1), Langerak_68 (P1), LittleShirley_78 (F1), Majeke_72 (P1), Malithi_69 (P1), Mangethe_72 (P1), Megabear_73 (W), Megiddo_69 (P1), PR_74

(W), Phalm_70 (P1), Phegasus_72 (P1), Phineas_70 (P1), Polkaroo_70 (P1), Pygmy_73 (P1), Shipwreck_72 (P1), Sonah_70 (P1), StevieRay_71 (P1), StressBall_69 (P1), Taptic_76 (W), Techage_70 (P1), Thespis_68 (P1), Totinger_74 (F1), Venti_67 (P1), Vidya_65 (P1), Willsammy_71 (P1), Xula_62 (I1), Zilizebeth_74 (P1),

Start 23:

- Found in 1 of 61 (1.6%) of genes in pham
- Manual Annotations of this start: 1 of 54
- Called 100.0% of time when present
- Phage (with cluster) where this start called: Necropolis_67 (P1),

Summary by clusters:

There are 5 clusters represented in this pham: I1, F1, singleton, P1, W,

Info for manual annotations of cluster F1:

- Start number 8 was manually annotated 1 time for cluster F1.
- Start number 22 was manually annotated 4 times for cluster F1.

Info for manual annotations of cluster I1:

- Start number 22 was manually annotated 1 time for cluster I1.

Info for manual annotations of cluster P1:

- Start number 11 was manually annotated 1 time for cluster P1.
- Start number 22 was manually annotated 37 times for cluster P1.
- Start number 23 was manually annotated 1 time for cluster P1.

Info for manual annotations of cluster W:

- Start number 19 was manually annotated 2 times for cluster W.
- Start number 22 was manually annotated 6 times for cluster W.

Gene Information:

Gene: Argie_77 Start: 54826, Stop: 55377, Start Num: 19

Candidate Starts for Argie_77:

(14, 54784), (15, 54796), (Start: 19 @54826 has 2 MA's), (Start: 22 @54877 has 48 MA's), (24, 54928), (25, 54943), (30, 55024), (31, 55036), (33, 55081), (35, 55159), (36, 55162), (40, 55288), (45, 55360),

Gene: Arib1_68 Start: 42771, Stop: 43271, Start Num: 22

Candidate Starts for Arib1_68:

(16, 42705), (Start: 22 @42771 has 48 MA's), (26, 42885), (28, 42897), (30, 42918), (34, 43026), (36, 43050),

Gene: Atcoo_68 Start: 45509, Stop: 46009, Start Num: 22

Candidate Starts for Atcoo_68:

(1, 44783), (2, 44798), (3, 44906), (4, 44987), (5, 45056), (6, 45110), (Start: 11 @45356 has 1 MA's), (13, 45410), (Start: 22 @45509 has 48 MA's), (25, 45575), (27, 45632), (30, 45656), (38, 45854), (43, 45950),

Gene: Bartholomew_65 Start: 42051, Stop: 42551, Start Num: 22

Candidate Starts for Bartholomew_65:

(16, 41985), (Start: 22 @42051 has 48 MA's), (26, 42165), (28, 42177), (30, 42198), (34, 42306),

Gene: Bhagsy_71 Start: 44626, Stop: 45126, Start Num: 22

Candidate Starts for Bhagsy_71:

(1, 43900), (2, 43915), (3, 44023), (4, 44104), (5, 44173), (6, 44227), (Start: 11 @44473 has 1 MA's), (13, 44527), (Start: 22 @44626 has 48 MA's), (25, 44692), (27, 44749), (30, 44773), (38, 44971), (43, 45067),

Gene: Bogie_72 Start: 45121, Stop: 45621, Start Num: 22

Candidate Starts for Bogie_72:

(16, 45055), (Start: 22 @45121 has 48 MA's), (26, 45235), (28, 45247), (30, 45268), (34, 45376), (42, 45550),

Gene: Brusacoram_68 Start: 44052, Stop: 44552, Start Num: 22

Candidate Starts for Brusacoram_68:

(1, 43326), (2, 43341), (3, 43449), (4, 43530), (5, 43599), (6, 43653), (Start: 11 @43899 has 1 MA's), (13, 43953), (Start: 22 @44052 has 48 MA's), (25, 44118), (27, 44175), (30, 44199), (38, 44397), (43, 44493),

Gene: Bunnies_72 Start: 45100, Stop: 45753, Start Num: 11

Candidate Starts for Bunnies_72:

(1, 44527), (2, 44542), (3, 44650), (4, 44731), (5, 44800), (6, 44854), (Start: 11 @45100 has 1 MA's), (13, 45154), (Start: 22 @45253 has 48 MA's), (25, 45319), (27, 45376), (30, 45400), (38, 45598), (43, 45694),

Gene: CactusJack_70 Start: 44749, Stop: 45249, Start Num: 22

Candidate Starts for CactusJack_70:

(16, 44683), (Start: 22 @44749 has 48 MA's), (26, 44863), (28, 44875), (30, 44896), (34, 45004),

Gene: Camster_70 Start: 43582, Stop: 44082, Start Num: 22

Candidate Starts for Camster_70:

(16, 43516), (Start: 22 @43582 has 48 MA's), (26, 43696), (28, 43708), (30, 43729), (34, 43837), (42, 44011),

Gene: Cepens_75 Start: 53686, Stop: 54186, Start Num: 22

Candidate Starts for Cepens_75:

(14, 53593), (15, 53605), (Start: 19 @53635 has 2 MA's), (Start: 22 @53686 has 48 MA's), (24, 53737), (25, 53752), (30, 53833), (31, 53845), (33, 53890), (35, 53968), (36, 53971), (40, 54097), (45, 54169),

Gene: D12_73 Start: 54321, Stop: 54821, Start Num: 22

Candidate Starts for D12_73:

(14, 54228), (15, 54240), (Start: 19 @54270 has 2 MA's), (Start: 22 @54321 has 48 MA's), (24, 54372), (25, 54387), (30, 54468), (31, 54480), (33, 54525), (35, 54603), (36, 54606), (40, 54732), (45, 54804),

Gene: DillTech15_79 Start: 46743, Stop: 47243, Start Num: 22

Candidate Starts for DillTech15_79:

(16, 46677), (Start: 22 @46743 has 48 MA's), (26, 46857), (28, 46869), (30, 46890), (34, 46998), (42, 47172),

Gene: Donovan_69 Start: 43711, Stop: 44211, Start Num: 22

Candidate Starts for Donovan_69:

(16, 43645), (Start: 22 @43711 has 48 MA's), (26, 43825), (28, 43837), (30, 43858), (34, 43966), (42, 44140),

Gene: Dynamo_69 Start: 43155, Stop: 43655, Start Num: 22

Candidate Starts for Dynamo_69:

(16, 43089), (Start: 22 @43155 has 48 MA's), (26, 43269), (28, 43281), (30, 43302), (34, 43410), (42, 43584),

Gene: Etoile_66 Start: 43538, Stop: 44038, Start Num: 22

Candidate Starts for Etoile_66:

(16, 43472), (Start: 22 @43538 has 48 MA's), (26, 43652), (28, 43664), (30, 43685), (34, 43793),

Gene: Fastidio_72 Start: 43551, Stop: 44051, Start Num: 22

Candidate Starts for Fastidio_72:

(16, 43485), (Start: 22 @43551 has 48 MA's), (26, 43665), (28, 43677), (30, 43698), (34, 43806), (42, 43980),

Gene: FirstPlacePfu_70 Start: 42114, Stop: 42614, Start Num: 22

Candidate Starts for FirstPlacePfu_70:

(13, 42015), (Start: 22 @42114 has 48 MA's), (25, 42180), (27, 42237), (30, 42261), (38, 42459), (43, 42555),

Gene: Fishburne_68 Start: 43537, Stop: 44037, Start Num: 22

Candidate Starts for Fishburne_68:

(16, 43471), (Start: 22 @43537 has 48 MA's), (26, 43651), (28, 43663), (30, 43684), (34, 43792), (42, 43966),

Gene: Gavriela_69 Start: 44442, Stop: 44942, Start Num: 22

Candidate Starts for Gavriela_69:

(16, 44376), (Start: 22 @44442 has 48 MA's), (26, 44556), (28, 44568), (30, 44589), (34, 44697),

Gene: Glaske_69 Start: 44749, Stop: 45249, Start Num: 22

Candidate Starts for Glaske_69:

(16, 44683), (Start: 22 @44749 has 48 MA's), (26, 44863), (28, 44875), (30, 44896), (34, 45004),

Gene: GodPhather_75 Start: 54280, Stop: 54831, Start Num: 19

Candidate Starts for GodPhather_75:

(14, 54238), (15, 54250), (18, 54277), (Start: 19 @54280 has 2 MA's), (Start: 22 @54331 has 48 MA's), (24, 54382), (25, 54397), (30, 54478), (31, 54490), (33, 54535), (35, 54613), (36, 54616), (40, 54742), (45, 54814),

Gene: GreaseLightnin_71 Start: 44906, Stop: 45406, Start Num: 22

Candidate Starts for GreaseLightnin_71:

(1, 44180), (2, 44195), (3, 44303), (4, 44384), (5, 44453), (6, 44507), (Start: 11 @44753 has 1 MA's), (13, 44807), (Start: 22 @44906 has 48 MA's), (27, 45029), (30, 45053), (34, 45161), (42, 45335),

Gene: HUHilltop_72 Start: 43378, Stop: 43878, Start Num: 22

Candidate Starts for HUHilltop_72:

(16, 43312), (Start: 22 @43378 has 48 MA's), (26, 43492), (28, 43504), (30, 43525), (34, 43633), (42, 43807),

Gene: IMpilo_68 Start: 43866, Stop: 44366, Start Num: 22

Candidate Starts for IMpilo_68:

(17, 43806), (Start: 22 @43866 has 48 MA's), (26, 43980), (28, 43992), (30, 44013), (34, 44121), (36, 44145), (37, 44199), (42, 44295),

Gene: Jebeks_67 Start: 42009, Stop: 42509, Start Num: 22

Candidate Starts for Jebeks_67:

(16, 41943), (Start: 22 @42009 has 48 MA's), (26, 42123), (28, 42135), (30, 42156), (34, 42264), (42, 42438),

Gene: Jeon_71 Start: 53824, Stop: 54324, Start Num: 22

Candidate Starts for Jeon_71:

(14, 53731), (15, 53743), (18, 53770), (Start: 19 @53773 has 2 MA's), (Start: 22 @53824 has 48 MA's), (24, 53875), (25, 53890), (30, 53971), (31, 53983), (33, 54028), (35, 54106), (36, 54109), (40, 54235), (45, 54307),

Gene: Jung_67 Start: 43030, Stop: 43530, Start Num: 22

Candidate Starts for Jung_67:

(1, 42304), (2, 42319), (3, 42427), (4, 42508), (5, 42577), (6, 42631), (Start: 11 @42877 has 1 MA's), (13, 42931), (Start: 22 @43030 has 48 MA's), (25, 43096), (27, 43153), (30, 43177), (38, 43375), (43, 43471),

Gene: Juniormint_66 Start: 42124, Stop: 42624, Start Num: 22

Candidate Starts for Juniormint_66:

(16, 42058), (Start: 22 @42124 has 48 MA's), (26, 42238), (28, 42250), (30, 42271), (34, 42379), (42, 42553),

Gene: Kari_66 Start: 43534, Stop: 44034, Start Num: 22

Candidate Starts for Kari_66:

(16, 43468), (Start: 22 @43534 has 48 MA's), (26, 43648), (28, 43660), (30, 43681), (34, 43789),

Gene: KilKor_70 Start: 45442, Stop: 45942, Start Num: 22

Candidate Starts for KilKor_70:

(16, 45376), (Start: 22 @45442 has 48 MA's), (26, 45556), (28, 45568), (30, 45589), (34, 45697),

Gene: Ksquared_70 Start: 45130, Stop: 45630, Start Num: 22

Candidate Starts for Ksquared_70:

(1, 44404), (2, 44419), (3, 44527), (4, 44608), (5, 44677), (6, 44731), (Start: 11 @44977 has 1 MA's), (13, 45031), (Start: 22 @45130 has 48 MA's), (25, 45196), (27, 45253), (30, 45277), (38, 45475), (43, 45571),

Gene: Kumao_108 Start: 65513, Stop: 65010, Start Num: 21

Candidate Starts for Kumao_108:

(Start: 21 @65513 has 1 MA's), (24, 65459), (29, 65372), (32, 65315), (33, 65306), (36, 65240), (39, 65135), (40, 65117), (41, 65096), (44, 65048),

Gene: Langerak_68 Start: 43515, Stop: 44015, Start Num: 22

Candidate Starts for Langerak_68:

(16, 43449), (Start: 22 @43515 has 48 MA's), (26, 43629), (28, 43641), (30, 43662), (34, 43770), (42, 43944),

Gene: LittleShirley_78 Start: 47224, Stop: 47724, Start Num: 22

Candidate Starts for LittleShirley_78:

(16, 47158), (Start: 22 @47224 has 48 MA's), (26, 47338), (28, 47350), (30, 47371), (34, 47479),

Gene: Majeke_72 Start: 44160, Stop: 44660, Start Num: 22

Candidate Starts for Majeke_72:

(16, 44094), (Start: 22 @44160 has 48 MA's), (26, 44274), (28, 44286), (30, 44307), (34, 44415), (42, 44589),

Gene: Malithi_69 Start: 43304, Stop: 43804, Start Num: 22

Candidate Starts for Malithi_69:

(16, 43238), (Start: 22 @43304 has 48 MA's), (26, 43418), (28, 43430), (30, 43451), (34, 43559), (42, 43733),

Gene: Mangethe_72 Start: 44160, Stop: 44660, Start Num: 22

Candidate Starts for Mangethe_72:

(16, 44094), (Start: 22 @44160 has 48 MA's), (26, 44274), (28, 44286), (30, 44307), (34, 44415), (42, 44589),

Gene: Megabear_73 Start: 53607, Stop: 54107, Start Num: 22

Candidate Starts for Megabear_73:

(14, 53514), (15, 53526), (Start: 19 @53556 has 2 MA's), (Start: 22 @53607 has 48 MA's), (24, 53658), (25, 53673), (30, 53754), (31, 53766), (33, 53811), (35, 53889), (36, 53892), (40, 54018), (45, 54090),

Gene: Megiddo_69 Start: 45310, Stop: 45810, Start Num: 22

Candidate Starts for Megiddo_69:

(16, 45244), (Start: 22 @45310 has 48 MA's), (26, 45424), (28, 45436), (30, 45457), (34, 45565),

Gene: Necropolis_67 Start: 42745, Stop: 43245, Start Num: 23

Candidate Starts for Necropolis_67:

(17, 42685), (Start: 23 @42745 has 1 MA's), (26, 42859), (28, 42871), (30, 42892), (34, 43000), (42, 43174),

Gene: PR_74 Start: 54298, Stop: 54798, Start Num: 22

Candidate Starts for PR_74:

(14, 54205), (15, 54217), (Start: 19 @54247 has 2 MA's), (Start: 22 @54298 has 48 MA's), (24, 54349), (25, 54364), (30, 54445), (31, 54457), (33, 54502), (35, 54580), (36, 54583), (40, 54709), (45, 54781),

Gene: Phalm_70 Start: 44740, Stop: 45240, Start Num: 22

Candidate Starts for Phalm_70:

(16, 44674), (Start: 22 @44740 has 48 MA's), (26, 44854), (28, 44866), (30, 44887), (34, 44995),

Gene: Phegasus_72 Start: 44127, Stop: 44627, Start Num: 22

Candidate Starts for Phegasus_72:

(16, 44061), (Start: 22 @44127 has 48 MA's), (26, 44241), (28, 44253), (30, 44274), (34, 44382), (42, 44556),

Gene: Phineas_70 Start: 43712, Stop: 44212, Start Num: 22

Candidate Starts for Phineas_70:

(16, 43646), (Start: 22 @43712 has 48 MA's), (26, 43826), (28, 43838), (30, 43859), (34, 43967), (42, 44141),

Gene: Polkaroo_70 Start: 45452, Stop: 45952, Start Num: 22

Candidate Starts for Polkaroo_70:

(16, 45386), (Start: 22 @45452 has 48 MA's), (26, 45566), (28, 45578), (30, 45599), (34, 45707), (42, 45881),

Gene: Pygmy_73 Start: 45094, Stop: 45594, Start Num: 22

Candidate Starts for Pygmy_73:

(16, 45028), (Start: 22 @45094 has 48 MA's), (26, 45208), (28, 45220), (30, 45241), (34, 45349), (42, 45523),

Gene: Shipwreck_72 Start: 45152, Stop: 45652, Start Num: 22

Candidate Starts for Shipwreck_72:

(16, 45086), (Start: 22 @45152 has 48 MA's), (26, 45266), (28, 45278), (30, 45299), (34, 45407), (42, 45581),

Gene: Sonah_70 Start: 42849, Stop: 43349, Start Num: 22

Candidate Starts for Sonah_70:

(16, 42783), (Start: 22 @42849 has 48 MA's), (26, 42963), (28, 42975), (30, 42996), (34, 43104), (42, 43278),

Gene: StevieRay_71 Start: 45286, Stop: 45786, Start Num: 22

Candidate Starts for StevieRay_71:

(1, 44560), (2, 44575), (3, 44683), (4, 44764), (5, 44833), (6, 44887), (Start: 11 @45133 has 1 MA's), (13, 45187), (Start: 22 @45286 has 48 MA's), (25, 45352), (27, 45409), (30, 45433), (38, 45631), (42, 45715),

Gene: StressBall_69 Start: 44442, Stop: 44942, Start Num: 22

Candidate Starts for StressBall_69:

(16, 44376), (Start: 22 @44442 has 48 MA's), (26, 44556), (28, 44568), (30, 44589), (34, 44697),

Gene: Taptic_76 Start: 54303, Stop: 54803, Start Num: 22

Candidate Starts for Taptic_76:

(14, 54210), (15, 54222), (Start: 19 @54252 has 2 MA's), (Start: 22 @54303 has 48 MA's), (24, 54354), (25, 54369), (30, 54450), (31, 54462), (33, 54507), (35, 54585), (36, 54588), (40, 54714), (45, 54786),

Gene: Techage_70 Start: 43643, Stop: 44143, Start Num: 22

Candidate Starts for Techage_70:

(16, 43577), (Start: 22 @43643 has 48 MA's), (26, 43757), (28, 43769), (30, 43790), (34, 43898), (42, 44072),

Gene: Thespis_68 Start: 44052, Stop: 44552, Start Num: 22

Candidate Starts for Thespis_68:

(1, 43326), (2, 43341), (3, 43449), (4, 43530), (5, 43599), (6, 43653), (Start: 11 @43899 has 1 MA's), (13, 43953), (Start: 22 @44052 has 48 MA's), (25, 44118), (27, 44175), (30, 44199), (38, 44397), (43, 44493),

Gene: Totinger_74 Start: 46301, Stop: 46801, Start Num: 22

Candidate Starts for Totinger_74:

(16, 46235), (Start: 22 @46301 has 48 MA's), (26, 46415), (28, 46427), (30, 46448), (34, 46556),

Gene: Venti_67 Start: 42051, Stop: 42551, Start Num: 22

Candidate Starts for Venti_67:

(16, 41985), (20, 42021), (Start: 22 @42051 has 48 MA's), (26, 42165), (28, 42177), (30, 42198), (34, 42306),

Gene: Vidya_65 Start: 42340, Stop: 42840, Start Num: 22

Candidate Starts for Vidya_65:

(1, 41614), (2, 41629), (3, 41737), (4, 41818), (5, 41887), (6, 41941), (Start: 11 @42187 has 1 MA's), (13, 42241), (Start: 22 @42340 has 48 MA's), (25, 42406), (27, 42463), (30, 42487), (38, 42685),

Gene: Willsammy_71 Start: 44926, Stop: 45426, Start Num: 22

Candidate Starts for Willsammy_71:

(16, 44860), (Start: 22 @44926 has 48 MA's), (26, 45040), (28, 45052), (30, 45073), (34, 45181),

Gene: Xula_62 Start: 42299, Stop: 42799, Start Num: 22

Candidate Starts for Xula_62:

(16, 42233), (Start: 22 @42299 has 48 MA's), (26, 42413), (28, 42425), (30, 42446), (34, 42554), (42, 42728),

Gene: Zilizebeth_74 Start: 44484, Stop: 44984, Start Num: 22

Candidate Starts for Zilizebeth_74:

(16, 44418), (Start: 22 @44484 has 48 MA's), (26, 44598), (28, 44610), (30, 44631), (34, 44739), (42, 44913),

Gene: Zizzle_80 Start: 49276, Stop: 49980, Start Num: 8

Candidate Starts for Zizzle_80:

(7, 49255), (Start: 8 @49276 has 1 MA's), (9, 49282), (10, 49288), (12, 49345), (Start: 22 @49480 has 48 MA's), (26, 49594), (28, 49606), (30, 49627), (34, 49735), (42, 49909),