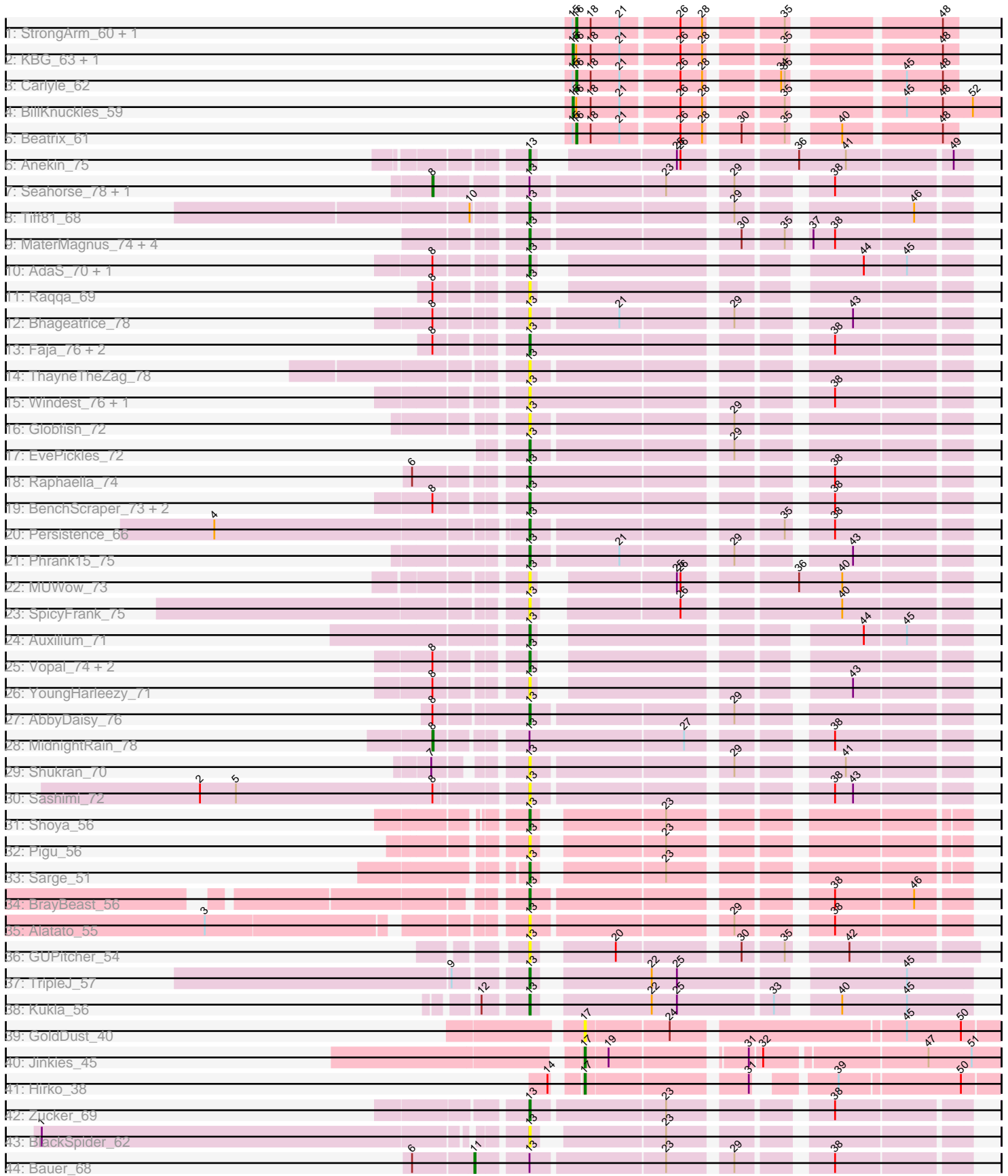


Pham 216188



Note: Tracks are now grouped by subcluster and scaled. Switching in subcluster is indicated by changes in track color. Track scale is now set by default to display the region 30 bp upstream of start 1 to 30 bp downstream of the last possible start. If this default region is judged to be packed too tightly with annotated starts, the track will be further scaled to only show that region of the ORF with annotated starts. This action will be indicated by adding "Zoomed" to the title. For starts, yellow indicates the location of called starts comprised solely of Glimmer/GeneMark auto-annotations, green indicates the location of called starts with at least 1 manual gene annotation.

Pham 216188 Report

This analysis was run 02/22/25 on database version 588.

Pham number 216188 has 59 members, 24 are drafts.

Phages represented in each track:

- Track 1 : StrongArm_60, Bexan_59
- Track 2 : KBG_63, Scowl_63
- Track 3 : Carlyle_62
- Track 4 : BillKnuckles_59
- Track 5 : Beatrix_61
- Track 6 : Anekin_75
- Track 7 : Seahorse_78, Richie_76
- Track 8 : Tiff81_68
- Track 9 : MaterMagnus_74, Sakai_71, Aikyam_72, Gorpy_72, BlueShadow_76
- Track 10 : AdaS_70, BillyTP_74
- Track 11 : Raqqa_69
- Track 12 : Bhageatrice_78
- Track 13 : Faja_76, JellyBread_70, Hestia_67
- Track 14 : ThayneTheZag_78
- Track 15 : Windest_76, Lawnathon_74
- Track 16 : Globfish_72
- Track 17 : EvePickles_72
- Track 18 : Raphaella_74
- Track 19 : BenchScraper_73, Isolde_71, CookieBear_71
- Track 20 : Persistence_66
- Track 21 : Phrank15_75
- Track 22 : MUWow_73
- Track 23 : SpicyFrank_75
- Track 24 : Auxilium_71
- Track 25 : Vopal_74, Hillester_77, RadFad_77
- Track 26 : YoungHarleezy_71
- Track 27 : AbbyDaisy_76
- Track 28 : MidnightRain_78
- Track 29 : Shukran_70
- Track 30 : Sashimi_72
- Track 31 : Shoya_56
- Track 32 : Pigu_56
- Track 33 : Sarge_51
- Track 34 : BrayBeast_56
- Track 35 : Alatao_55
- Track 36 : GUPitcher_54
- Track 37 : TripleJ_57

- Track 38 : Kukla_56
- Track 39 : GoldDust_40
- Track 40 : Jinkies_45
- Track 41 : Hirko_38
- Track 42 : Zucker_69
- Track 43 : BlackSpider_62
- Track 44 : Bauer_68

Summary of Final Annotations (See graph section above for start numbers):

The start number called the most often in the published annotations is 13, it was called in 22 of the 35 non-draft genes in the pham.

Genes that call this "Most Annotated" start:

- AbbyDaisy_76, AdaS_70, Aikyam_72, Alatato_55, Anekin_75, Auxilium_71, BenchScraper_73, Bhageatrice_78, BillyTP_74, BlackSpider_62, BlueShadow_76, BrayBeast_56, CookieBear_71, EvePickles_72, Faja_76, GUPitcher_54, Globfish_72, Gorpy_72, Hestia_67, Hillester_77, Isolde_71, JellyBread_70, Kukla_56, Lawnathon_74, MUWow_73, MaterMagnus_74, Persistence_66, Phrank15_75, Pigu_56, RadFad_77, Raphaella_74, Raqqa_69, Sakai_71, Sarge_51, Sashimi_72, Shoya_56, Shukran_70, SpicyFrank_75, ThayneTheZag_78, Tiff81_68, TripleJ_57, Vopal_74, Windest_76, YoungHarleezy_71, Zucker_69,

Genes that have the "Most Annotated" start but do not call it:

- Bauer_68, MidnightRain_78, Richie_76, Seahorse_78,

Genes that do not have the "Most Annotated" start:

- Beatrix_61, Bexan_59, BillKnuckles_59, Carlyle_62, GoldDust_40, Hirko_38, Jinkies_45, KBG_63, Scowl_63, StrongArm_60,

Summary by start number:

Start 8:

- Found in 19 of 59 (32.2%) of genes in pham
- Manual Annotations of this start: 3 of 35
- Called 15.8% of time when present
- Phage (with cluster) where this start called: MidnightRain_78 (AY), Richie_76 (AY), Seahorse_78 (AY),

Start 11:

- Found in 1 of 59 (1.7%) of genes in pham
- Manual Annotations of this start: 1 of 35
- Called 100.0% of time when present
- Phage (with cluster) where this start called: Bauer_68 (FN),

Start 13:

- Found in 49 of 59 (83.1%) of genes in pham
- Manual Annotations of this start: 22 of 35
- Called 91.8% of time when present

- Phage (with cluster) where this start called: AbbyDaisy_76 (AY), AdaS_70 (AY), Aikyam_72 (AY), Alatato_55 (FB), Anekin_75 (AY), Auxilium_71 (AY), BenchScraper_73 (AY), Bhageatrice_78 (AY), BillyTP_74 (AY), BlackSpider_62 (FN), BlueShadow_76 (AY), BrayBeast_56 (FB), CookieBear_71 (AY), EvePickles_72 (AY), Faja_76 (AY), GUPitcher_54 (FJ), Globfish_72 (AY), Gorpy_72 (AY), Hestia_67 (AY), Hillester_77 (AY), Isolde_71 (AY), JellyBread_70 (AY), Kukla_56 (FJ), Lawnathon_74 (AY), MUWow_73 (AY), MaterMagnus_74 (AY), Persistence_66 (AY), Phrank15_75 (AY), Pigu_56 (FB), RadFad_77 (AY), Raphaella_74 (AY), Raqqa_69 (AY), Sakai_71 (AY), Sarge_51 (FB), Sashimi_72 (AY), Shoya_56 (FB), Shukran_70 (AY), SpicyFrank_75 (AY), ThayneTheZag_78 (AY), Tiff81_68 (AY), TripleJ_57 (FJ), Vopal_74 (AY), Windest_76 (AY), YoungHarleezy_71 (AY), Zucker_69 (FN),

Start 15:

- Found in 7 of 59 (11.9%) of genes in pham
- Manual Annotations of this start: 3 of 35
- Called 42.9% of time when present
- Phage (with cluster) where this start called: BillKnuckles_59 (A1), KBG_63 (A1), Scowl_63 (A1),

Start 16:

- Found in 7 of 59 (11.9%) of genes in pham
- Manual Annotations of this start: 4 of 35
- Called 57.1% of time when present
- Phage (with cluster) where this start called: Beatrix_61 (A1), Bexan_59 (A1), Carlyle_62 (A1), StrongArm_60 (A1),

Start 17:

- Found in 3 of 59 (5.1%) of genes in pham
- Manual Annotations of this start: 2 of 35
- Called 100.0% of time when present
- Phage (with cluster) where this start called: GoldDust_40 (FL), Hirko_38 (FL), Jinkies_45 (FL),

Summary by clusters:

There are 6 clusters represented in this pham: A1, FB, AY, FJ, FL, FN,

Info for manual annotations of cluster A1:

- Start number 15 was manually annotated 3 times for cluster A1.
- Start number 16 was manually annotated 4 times for cluster A1.

Info for manual annotations of cluster AY:

- Start number 8 was manually annotated 3 times for cluster AY.
- Start number 13 was manually annotated 16 times for cluster AY.

Info for manual annotations of cluster FB:

- Start number 13 was manually annotated 3 times for cluster FB.

Info for manual annotations of cluster FJ:

- Start number 13 was manually annotated 2 times for cluster FJ.

Info for manual annotations of cluster FL:

- Start number 17 was manually annotated 2 times for cluster FL.

Info for manual annotations of cluster FN:

- Start number 11 was manually annotated 1 time for cluster FN.
- Start number 13 was manually annotated 1 time for cluster FN.

Gene Information:

Gene: AbbyDaisy_76 Start: 41022, Stop: 41339, Start Num: 13

Candidate Starts for AbbyDaisy_76:

(Start: 8 @40953 has 3 MA's), (Start: 13 @41022 has 22 MA's), (29, 41172),

Gene: AdaS_70 Start: 36753, Stop: 37049, Start Num: 13

Candidate Starts for AdaS_70:

(Start: 8 @36693 has 3 MA's), (Start: 13 @36753 has 22 MA's), (44, 36969), (45, 37002),

Gene: Aikyam_72 Start: 37441, Stop: 37758, Start Num: 13

Candidate Starts for Aikyam_72:

(Start: 13 @37441 has 22 MA's), (30, 37597), (35, 37627), (37, 37636), (38, 37654),

Gene: Alatato_55 Start: 32020, Stop: 32337, Start Num: 13

Candidate Starts for Alatato_55:

(3, 31789), (Start: 13 @32020 has 22 MA's), (29, 32170), (38, 32233),

Gene: Anekin_75 Start: 40019, Stop: 40330, Start Num: 13

Candidate Starts for Anekin_75:

(Start: 13 @40019 has 22 MA's), (25, 40112), (26, 40115), (36, 40196), (41, 40235), (49, 40316),

Gene: Auxilium_71 Start: 37005, Stop: 37301, Start Num: 13

Candidate Starts for Auxilium_71:

(Start: 13 @37005 has 22 MA's), (44, 37221), (45, 37254),

Gene: Bauer_68 Start: 38091, Stop: 38444, Start Num: 11

Candidate Starts for Bauer_68:

(6, 38049), (Start: 11 @38091 has 1 MA's), (Start: 13 @38127 has 22 MA's), (23, 38232), (29, 38277), (38, 38340),

Gene: Beatrix_61 Start: 42133, Stop: 41867, Start Num: 16

Candidate Starts for Beatrix_61:

(Start: 15 @42136 has 3 MA's), (Start: 16 @42133 has 4 MA's), (18, 42121), (21, 42097), (26, 42052), (28, 42034), (30, 42013), (35, 41983), (40, 41953), (48, 41878),

Gene: BenchScraper_73 Start: 38140, Stop: 38463, Start Num: 13

Candidate Starts for BenchScraper_73:

(Start: 8 @38080 has 3 MA's), (Start: 13 @38140 has 22 MA's), (38, 38359),

Gene: Bexan_59 Start: 41912, Stop: 41646, Start Num: 16

Candidate Starts for Bexan_59:

(Start: 15 @41915 has 3 MA's), (Start: 16 @41912 has 4 MA's), (18, 41900), (21, 41876), (26, 41831), (28, 41813), (35, 41762), (48, 41657),

Gene: Bhageatrice_78 Start: 41825, Stop: 42142, Start Num: 13

Candidate Starts for Bhageatrice_78:

(Start: 8 @41762 has 3 MA's), (Start: 13 @41825 has 22 MA's), (21, 41894), (29, 41975), (43, 42053),

Gene: BillKnuckles_59 Start: 42435, Stop: 42130, Start Num: 15

Candidate Starts for BillKnuckles_59:

(Start: 15 @42435 has 3 MA's), (Start: 16 @42432 has 4 MA's), (18, 42420), (21, 42396), (26, 42351), (28, 42333), (35, 42282), (45, 42207), (48, 42177), (52, 42153),

Gene: BillyTP_74 Start: 39995, Stop: 40291, Start Num: 13

Candidate Starts for BillyTP_74:

(Start: 8 @39935 has 3 MA's), (Start: 13 @39995 has 22 MA's), (44, 40211), (45, 40244),

Gene: BlackSpider_62 Start: 36140, Stop: 36442, Start Num: 13

Candidate Starts for BlackSpider_62:

(1, 35759), (Start: 13 @36140 has 22 MA's), (23, 36230),

Gene: BlueShadow_76 Start: 39289, Stop: 39606, Start Num: 13

Candidate Starts for BlueShadow_76:

(Start: 13 @39289 has 22 MA's), (30, 39445), (35, 39475), (37, 39484), (38, 39502),

Gene: BrayBeast_56 Start: 31864, Stop: 32181, Start Num: 13

Candidate Starts for BrayBeast_56:

(Start: 13 @31864 has 22 MA's), (38, 32077), (46, 32140),

Gene: Carlyle_62 Start: 39960, Stop: 39694, Start Num: 16

Candidate Starts for Carlyle_62:

(Start: 15 @39963 has 3 MA's), (Start: 16 @39960 has 4 MA's), (18, 39948), (21, 39924), (26, 39879), (28, 39861), (34, 39813), (35, 39810), (45, 39735), (48, 39705),

Gene: CookieBear_71 Start: 38614, Stop: 38937, Start Num: 13

Candidate Starts for CookieBear_71:

(Start: 8 @38554 has 3 MA's), (Start: 13 @38614 has 22 MA's), (38, 38833),

Gene: EvePickles_72 Start: 39884, Stop: 40201, Start Num: 13

Candidate Starts for EvePickles_72:

(Start: 13 @39884 has 22 MA's), (29, 40034),

Gene: Faja_76 Start: 40656, Stop: 40979, Start Num: 13

Candidate Starts for Faja_76:

(Start: 8 @40596 has 3 MA's), (Start: 13 @40656 has 22 MA's), (38, 40875),

Gene: GUPitcher_54 Start: 35925, Stop: 36233, Start Num: 13

Candidate Starts for GUPitcher_54:

(Start: 13 @35925 has 22 MA's), (20, 35976), (30, 36066), (35, 36096), (42, 36135),

Gene: Globfish_72 Start: 38348, Stop: 38665, Start Num: 13

Candidate Starts for Globfish_72:

(Start: 13 @38348 has 22 MA's), (29, 38498),

Gene: GoldDust_40 Start: 33666, Stop: 33986, Start Num: 17

Candidate Starts for GoldDust_40:

(Start: 17 @33666 has 2 MA's), (24, 33732), (45, 33912), (50, 33957),

Gene: Gorpy_72 Start: 39861, Stop: 40178, Start Num: 13
Candidate Starts for Gorpy_72:
(Start: 13 @39861 has 22 MA's), (30, 40017), (35, 40047), (37, 40056), (38, 40074),

Gene: Hestia_67 Start: 36879, Stop: 37202, Start Num: 13
Candidate Starts for Hestia_67:
(Start: 8 @36819 has 3 MA's), (Start: 13 @36879 has 22 MA's), (38, 37098),

Gene: Hillester_77 Start: 39406, Stop: 39702, Start Num: 13
Candidate Starts for Hillester_77:
(Start: 8 @39346 has 3 MA's), (Start: 13 @39406 has 22 MA's),

Gene: Hirko_38 Start: 32932, Stop: 33225, Start Num: 17
Candidate Starts for Hirko_38:
(14, 32917), (Start: 17 @32932 has 2 MA's), (31, 33052), (39, 33100), (50, 33196),

Gene: Isolde_71 Start: 38725, Stop: 39048, Start Num: 13
Candidate Starts for Isolde_71:
(Start: 8 @38665 has 3 MA's), (Start: 13 @38725 has 22 MA's), (38, 38944),

Gene: JellyBread_70 Start: 38870, Stop: 39193, Start Num: 13
Candidate Starts for JellyBread_70:
(Start: 8 @38810 has 3 MA's), (Start: 13 @38870 has 22 MA's), (38, 39089),

Gene: Jinkies_45 Start: 34146, Stop: 34457, Start Num: 17
Candidate Starts for Jinkies_45:
(Start: 17 @34146 has 2 MA's), (19, 34164), (31, 34263), (32, 34272), (47, 34398), (51, 34434),

Gene: KBG_63 Start: 43145, Stop: 42876, Start Num: 15
Candidate Starts for KBG_63:
(Start: 15 @43145 has 3 MA's), (Start: 16 @43142 has 4 MA's), (18, 43130), (21, 43106), (26, 43061),
(28, 43043), (35, 42992), (48, 42887),

Gene: Kukla_56 Start: 35378, Stop: 35701, Start Num: 13
Candidate Starts for Kukla_56:
(12, 35345), (Start: 13 @35378 has 22 MA's), (22, 35459), (25, 35480), (33, 35555), (40, 35594), (45,
35648),

Gene: Lawnathon_74 Start: 38975, Stop: 39298, Start Num: 13
Candidate Starts for Lawnathon_74:
(Start: 13 @38975 has 22 MA's), (38, 39194),

Gene: MUWow_73 Start: 40107, Stop: 40418, Start Num: 13
Candidate Starts for MUWow_73:
(Start: 13 @40107 has 22 MA's), (25, 40200), (26, 40203), (36, 40284), (40, 40320),

Gene: MaterMagnus_74 Start: 39613, Stop: 39930, Start Num: 13
Candidate Starts for MaterMagnus_74:
(Start: 13 @39613 has 22 MA's), (30, 39769), (35, 39799), (37, 39808), (38, 39826),

Gene: MidnightRain_78 Start: 40135, Stop: 40518, Start Num: 8
Candidate Starts for MidnightRain_78:
(Start: 8 @40135 has 3 MA's), (Start: 13 @40195 has 22 MA's), (27, 40321), (38, 40414),

Gene: Persistence_66 Start: 36801, Stop: 37118, Start Num: 13
Candidate Starts for Persistence_66:
(4, 36561), (Start: 13 @36801 has 22 MA's), (35, 36987), (38, 37014),

Gene: Phrank15_75 Start: 38696, Stop: 39013, Start Num: 13
Candidate Starts for Phrank15_75:
(Start: 13 @38696 has 22 MA's), (21, 38765), (29, 38846), (43, 38924),

Gene: Pigu_56 Start: 30796, Stop: 31095, Start Num: 13
Candidate Starts for Pigu_56:
(Start: 13 @30796 has 22 MA's), (23, 30886),

Gene: RadFad_77 Start: 39406, Stop: 39702, Start Num: 13
Candidate Starts for RadFad_77:
(Start: 8 @39346 has 3 MA's), (Start: 13 @39406 has 22 MA's),

Gene: Raphaella_74 Start: 38671, Stop: 38994, Start Num: 13
Candidate Starts for Raphaella_74:
(6, 38596), (Start: 13 @38671 has 22 MA's), (38, 38890),

Gene: Raqqa_69 Start: 36817, Stop: 37113, Start Num: 13
Candidate Starts for Raqqa_69:
(Start: 8 @36757 has 3 MA's), (Start: 13 @36817 has 22 MA's),

Gene: Richie_76 Start: 40479, Stop: 40859, Start Num: 8
Candidate Starts for Richie_76:
(Start: 8 @40479 has 3 MA's), (Start: 13 @40542 has 22 MA's), (23, 40647), (29, 40692), (38, 40755),

Gene: Sakai_71 Start: 38572, Stop: 38889, Start Num: 13
Candidate Starts for Sakai_71:
(Start: 13 @38572 has 22 MA's), (30, 38728), (35, 38758), (37, 38767), (38, 38785),

Gene: Sarge_51 Start: 30199, Stop: 30498, Start Num: 13
Candidate Starts for Sarge_51:
(Start: 13 @30199 has 22 MA's), (23, 30289),

Gene: Sashimi_72 Start: 38667, Stop: 38984, Start Num: 13
Candidate Starts for Sashimi_72:
(2, 38412), (5, 38442), (Start: 8 @38604 has 3 MA's), (Start: 13 @38667 has 22 MA's), (38, 38880),
(43, 38895),

Gene: Scowl_63 Start: 41099, Stop: 40830, Start Num: 15
Candidate Starts for Scowl_63:
(Start: 15 @41099 has 3 MA's), (Start: 16 @41096 has 4 MA's), (18, 41084), (21, 41060), (26, 41015),
(28, 40997), (35, 40946), (48, 40841),

Gene: Seahorse_78 Start: 41611, Stop: 41991, Start Num: 8
Candidate Starts for Seahorse_78:
(Start: 8 @41611 has 3 MA's), (Start: 13 @41674 has 22 MA's), (23, 41779), (29, 41824), (38, 41887),

Gene: Shoya_56 Start: 31813, Stop: 32112, Start Num: 13
Candidate Starts for Shoya_56:

(Start: 13 @31813 has 22 MA's), (23, 31903),

Gene: Shukran_70 Start: 37615, Stop: 37932, Start Num: 13

Candidate Starts for Shukran_70:

(7, 37558), (Start: 13 @37615 has 22 MA's), (29, 37765), (41, 37837),

Gene: SpicyFrank_75 Start: 38962, Stop: 39276, Start Num: 13

Candidate Starts for SpicyFrank_75:

(Start: 13 @38962 has 22 MA's), (26, 39061), (40, 39178),

Gene: StrongArm_60 Start: 42040, Stop: 41774, Start Num: 16

Candidate Starts for StrongArm_60:

(Start: 15 @42043 has 3 MA's), (Start: 16 @42040 has 4 MA's), (18, 42028), (21, 42004), (26, 41959), (28, 41941), (35, 41890), (48, 41785),

Gene: ThayneTheZag_78 Start: 39595, Stop: 39912, Start Num: 13

Candidate Starts for ThayneTheZag_78:

(Start: 13 @39595 has 22 MA's),

Gene: Tiff81_68 Start: 37265, Stop: 37582, Start Num: 13

Candidate Starts for Tiff81_68:

(10, 37229), (Start: 13 @37265 has 22 MA's), (29, 37415), (46, 37541),

Gene: TripleJ_57 Start: 35331, Stop: 35654, Start Num: 13

Candidate Starts for TripleJ_57:

(9, 35280), (Start: 13 @35331 has 22 MA's), (22, 35412), (25, 35433), (45, 35601),

Gene: Vopal_74 Start: 40874, Stop: 41170, Start Num: 13

Candidate Starts for Vopal_74:

(Start: 8 @40814 has 3 MA's), (Start: 13 @40874 has 22 MA's),

Gene: Windest_76 Start: 38033, Stop: 38356, Start Num: 13

Candidate Starts for Windest_76:

(Start: 13 @38033 has 22 MA's), (38, 38252),

Gene: YoungHarleezy_71 Start: 38447, Stop: 38743, Start Num: 13

Candidate Starts for YoungHarleezy_71:

(Start: 8 @38387 has 3 MA's), (Start: 13 @38447 has 22 MA's), (43, 38654),

Gene: Zucker_69 Start: 40359, Stop: 40676, Start Num: 13

Candidate Starts for Zucker_69:

(Start: 13 @40359 has 22 MA's), (23, 40464), (38, 40572),