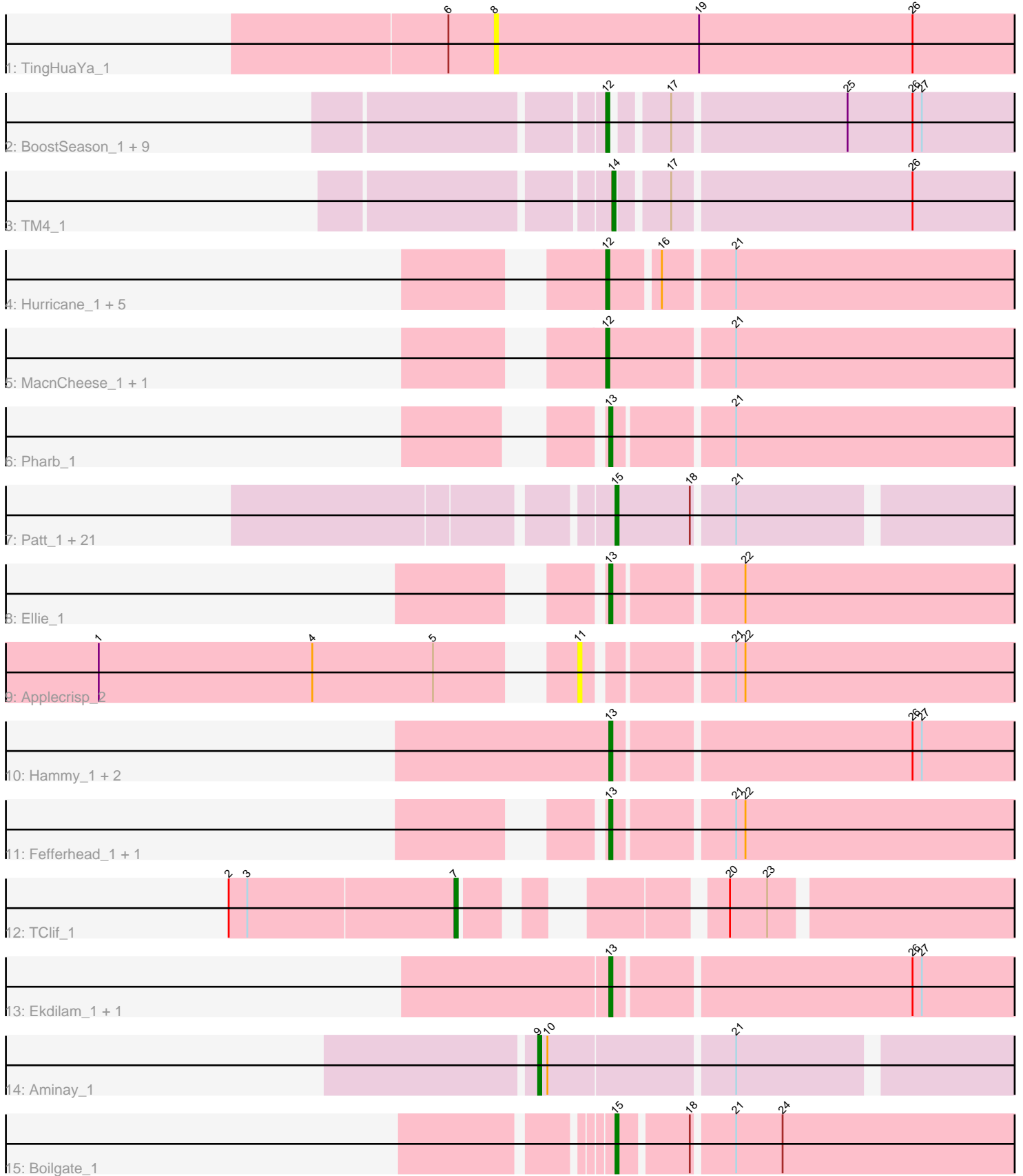


Pham 216217



Note: Tracks are now grouped by subcluster and scaled. Switching in subcluster is indicated by changes in track color. Track scale is now set by default to display the region 30 bp upstream of start 1 to 30 bp downstream of the last possible start. If this default region is judged to be packed too tightly with annotated starts, the track will be further scaled to only show that region of the ORF with annotated starts. This action will be indicated by adding "Zoomed" to the title. For starts, yellow indicates the location of called starts comprised solely of Glimmer/GeneMark auto-annotations, green indicates the location of called starts with at least 1 manual gene annotation.

## Pham 216217 Report

This analysis was run 02/22/25 on database version 588.

Pham number 216217 has 55 members, 8 are drafts.

Phages represented in each track:

- Track 1 : TingHuaYa\_1
- Track 2 : BoostSeason\_1, Doughnut\_1, Milly\_1, Strobilo\_1, DismalFunk\_1, Mufasa\_1, DismalStressor\_1, Findley\_1, Marcoliusprime\_1, ZoeJ\_1
- Track 3 : TM4\_1
- Track 4 : Hurricane\_1, Keshu\_1, Pixie\_1, ShedlockHolmes\_1, Lea83\_1, TBond007\_1
- Track 5 : MacnCheese\_1, TribbleTrouble\_1
- Track 6 : Pharb\_1
- Track 7 : Patt\_1, Kraw\_1, Fionnbharth\_1, MissDaisy\_1, Juliette\_1, Eponine\_1, Y10\_01, Lebo14\_1, Slarp\_1, Taquito\_1, Y2\_01, JF1\_1, OmniCritical\_1, SamScheppers\_1, Malthus\_1, Bobquesha\_1, Reptar3000\_1, Cheetobro\_1, Ruthiejr\_1, Wintermute\_1, Chancellor\_1, Mitti\_1
- Track 8 : Ellie\_1
- Track 9 : Applecrisp\_2
- Track 10 : Hammy\_1, Amohnition\_1, DARTH\_P\_1
- Track 11 : Fefferhead\_1, Amgine\_1
- Track 12 : TClif\_1
- Track 13 : Ekdilam\_1, November\_1
- Track 14 : Aminay\_1
- Track 15 : Boilgate\_1

### ***Summary of Final Annotations (See graph section above for start numbers):***

The start number called the most often in the published annotations is 15, it was called in 20 of the 47 non-draft genes in the pham.

Genes that call this "Most Annotated" start:

- Bobquesha\_1, Boilgate\_1, Chancellor\_1, Cheetobro\_1, Eponine\_1, Fionnbharth\_1, JF1\_1, Juliette\_1, Kraw\_1, Lebo14\_1, Malthus\_1, MissDaisy\_1, Mitti\_1, OmniCritical\_1, Patt\_1, Reptar3000\_1, Ruthiejr\_1, SamScheppers\_1, Slarp\_1, Taquito\_1, Wintermute\_1, Y10\_01, Y2\_01,

Genes that have the "Most Annotated" start but do not call it:

-

Genes that do not have the "Most Annotated" start:

• Amgine\_1, Aminay\_1, Amohnition\_1, Applecrisp\_2, BoostSeason\_1, DarthP\_1, DismalFunk\_1, DismalStressor\_1, Doughnut\_1, Ekdilam\_1, Ellie\_1, Fefferhead\_1, Findley\_1, Hammy\_1, Hurricane\_1, Keshu\_1, Lea83\_1, MacnCheese\_1, Marcoliusprime\_1, Milly\_1, Mufasa\_1, November\_1, Pharb\_1, Pixie\_1, ShedlockHolmes\_1, Strobilo\_1, TBond007\_1, TClif\_1, TM4\_1, TingHuaYa\_1, TribbleTrouble\_1, ZoeJ\_1,

### Summary by start number:

Start 7:

- Found in 1 of 55 ( 1.8% ) of genes in pham
- Manual Annotations of this start: 1 of 47
- Called 100.0% of time when present
- Phage (with cluster) where this start called: TClif\_1 (K6),

Start 8:

- Found in 1 of 55 ( 1.8% ) of genes in pham
- No Manual Annotations of this start.
- Called 100.0% of time when present
- Phage (with cluster) where this start called: TingHuaYa\_1 (K1),

Start 9:

- Found in 1 of 55 ( 1.8% ) of genes in pham
- Manual Annotations of this start: 1 of 47
- Called 100.0% of time when present
- Phage (with cluster) where this start called: Aminay\_1 (K7),

Start 11:

- Found in 1 of 55 ( 1.8% ) of genes in pham
- No Manual Annotations of this start.
- Called 100.0% of time when present
- Phage (with cluster) where this start called: Applecrisp\_2 (K6),

Start 12:

- Found in 18 of 55 ( 32.7% ) of genes in pham
- Manual Annotations of this start: 16 of 47
- Called 100.0% of time when present
- Phage (with cluster) where this start called: BoostSeason\_1 (K2), DismalFunk\_1 (K2), DismalStressor\_1 (K2), Doughnut\_1 (K2), Findley\_1 (K2), Hurricane\_1 (K3), Keshu\_1 (K3), Lea83\_1 (K3), MacnCheese\_1 (K3), Marcoliusprime\_1 (K2), Milly\_1 (K2), Mufasa\_1 (K2), Pixie\_1 (K3), ShedlockHolmes\_1 (K3), Strobilo\_1 (K2), TBond007\_1 (K3), TribbleTrouble\_1 (K3), ZoeJ\_1 (K2),

Start 13:

- Found in 9 of 55 ( 16.4% ) of genes in pham
- Manual Annotations of this start: 8 of 47
- Called 100.0% of time when present
- Phage (with cluster) where this start called: Amgine\_1 (K6), Amohnition\_1 (K6), DarthP\_1 (K6), Ekdilam\_1 (K6), Ellie\_1 (K6), Fefferhead\_1 (K6), Hammy\_1 (K6), November\_1 (K6), Pharb\_1 (K3),

Start 14:

- Found in 1 of 55 ( 1.8% ) of genes in pham
- Manual Annotations of this start: 1 of 47
- Called 100.0% of time when present
- Phage (with cluster) where this start called: TM4\_1 (K2),

Start 15:

- Found in 23 of 55 ( 41.8% ) of genes in pham
- Manual Annotations of this start: 20 of 47
- Called 100.0% of time when present
- Phage (with cluster) where this start called: Bobquesha\_1 (K4), Boilgate\_1 (K8), Chancellor\_1 (K4), Cheetobro\_1 (K4), Eponine\_1 (K4), Fionnbharth\_1 (K4), JF1\_1 (K4), Juliette\_1 (K4), Kraw\_1 (K4), Lebo14\_1 (K4), Malthus\_1 (K4), MissDaisy\_1 (K4), Mitti\_1 (K4), OmniCritical\_1 (K4), Patt\_1 (K4), Reptar3000\_1 (K4), Ruthiejr\_1 (K4), SamScheppers\_1 (K4), Slarp\_1 (K4), Taquito\_1 (K4), Wintermute\_1 (K4), Y10\_01 (K4), Y2\_01 (K4),

**Summary by clusters:**

There are 7 clusters represented in this pham: K3, K2, K1, K7, K6, K4, K8,

Info for manual annotations of cluster K2:

- Start number 12 was manually annotated 9 times for cluster K2.
- Start number 14 was manually annotated 1 time for cluster K2.

Info for manual annotations of cluster K3:

- Start number 12 was manually annotated 7 times for cluster K3.
- Start number 13 was manually annotated 1 time for cluster K3.

Info for manual annotations of cluster K4:

- Start number 15 was manually annotated 19 times for cluster K4.

Info for manual annotations of cluster K6:

- Start number 7 was manually annotated 1 time for cluster K6.
- Start number 13 was manually annotated 7 times for cluster K6.

Info for manual annotations of cluster K7:

- Start number 9 was manually annotated 1 time for cluster K7.

Info for manual annotations of cluster K8:

- Start number 15 was manually annotated 1 time for cluster K8.

**Gene Information:**

Gene: Amgine\_1 Start: 52, Stop: 195, Start Num: 13

Candidate Starts for Amgine\_1:

(Start: 13 @52 has 8 MA's), (21, 88), (22, 91),

Gene: Aminay\_1 Start: 67, Stop: 231, Start Num: 9

Candidate Starts for Aminay\_1:

(Start: 9 @67 has 1 MA's), (10, 70), (21, 127),

Gene: Amohnition\_1 Start: 70, Stop: 210, Start Num: 13

Candidate Starts for Amohnition\_1:

(Start: 13 @70 has 8 MA's), (26, 163), (27, 166),

Gene: Applecrisp\_2 Start: 376, Stop: 525, Start Num: 11

Candidate Starts for Applecrisp\_2:

(1, 235), (4, 304), (5, 343), (11, 376), (21, 418), (22, 421),

Gene: Bobquesha\_1 Start: 117, Stop: 254, Start Num: 15

Candidate Starts for Bobquesha\_1:

(Start: 15 @117 has 20 MA's), (18, 141), (21, 153),

Gene: Boilgate\_1 Start: 62, Stop: 202, Start Num: 15

Candidate Starts for Boilgate\_1:

(Start: 15 @62 has 20 MA's), (18, 83), (21, 95), (24, 110),

Gene: BoostSeason\_1 Start: 88, Stop: 222, Start Num: 12

Candidate Starts for BoostSeason\_1:

(Start: 12 @88 has 16 MA's), (17, 103), (25, 157), (26, 178), (27, 181),

Gene: Chancellor\_1 Start: 117, Stop: 254, Start Num: 15

Candidate Starts for Chancellor\_1:

(Start: 15 @117 has 20 MA's), (18, 141), (21, 153),

Gene: Cheetobro\_1 Start: 117, Stop: 254, Start Num: 15

Candidate Starts for Cheetobro\_1:

(Start: 15 @117 has 20 MA's), (18, 141), (21, 153),

Gene: DarthP\_1 Start: 70, Stop: 210, Start Num: 13

Candidate Starts for DarthP\_1:

(Start: 13 @70 has 8 MA's), (26, 163), (27, 166),

Gene: DismalFunk\_1 Start: 88, Stop: 222, Start Num: 12

Candidate Starts for DismalFunk\_1:

(Start: 12 @88 has 16 MA's), (17, 103), (25, 157), (26, 178), (27, 181),

Gene: DismalStressor\_1 Start: 88, Stop: 222, Start Num: 12

Candidate Starts for DismalStressor\_1:

(Start: 12 @88 has 16 MA's), (17, 103), (25, 157), (26, 178), (27, 181),

Gene: Doughnut\_1 Start: 88, Stop: 222, Start Num: 12

Candidate Starts for Doughnut\_1:

(Start: 12 @88 has 16 MA's), (17, 103), (25, 157), (26, 178), (27, 181),

Gene: Ekdilam\_1 Start: 69, Stop: 209, Start Num: 13

Candidate Starts for Ekdilam\_1:

(Start: 13 @69 has 8 MA's), (26, 162), (27, 165),

Gene: Ellie\_1 Start: 52, Stop: 195, Start Num: 13

Candidate Starts for Ellie\_1:

(Start: 13 @52 has 8 MA's), (22, 91),

Gene: Eponine\_1 Start: 117, Stop: 254, Start Num: 15

Candidate Starts for Eponine\_1:

(Start: 15 @117 has 20 MA's), (18, 141), (21, 153),

Gene: Fefferhead\_1 Start: 52, Stop: 195, Start Num: 13

Candidate Starts for Fefferhead\_1:

(Start: 13 @52 has 8 MA's), (21, 88), (22, 91),

Gene: Findley\_1 Start: 88, Stop: 222, Start Num: 12

Candidate Starts for Findley\_1:

(Start: 12 @88 has 16 MA's), (17, 103), (25, 157), (26, 178), (27, 181),

Gene: Fionnbharth\_1 Start: 117, Stop: 254, Start Num: 15

Candidate Starts for Fionnbharth\_1:

(Start: 15 @117 has 20 MA's), (18, 141), (21, 153),

Gene: Hammy\_1 Start: 70, Stop: 210, Start Num: 13

Candidate Starts for Hammy\_1:

(Start: 13 @70 has 8 MA's), (26, 163), (27, 166),

Gene: Hurricane\_1 Start: 51, Stop: 194, Start Num: 12

Candidate Starts for Hurricane\_1:

(Start: 12 @51 has 16 MA's), (16, 66), (21, 87),

Gene: JF1\_1 Start: 117, Stop: 254, Start Num: 15

Candidate Starts for JF1\_1:

(Start: 15 @117 has 20 MA's), (18, 141), (21, 153),

Gene: Juliette\_1 Start: 117, Stop: 254, Start Num: 15

Candidate Starts for Juliette\_1:

(Start: 15 @117 has 20 MA's), (18, 141), (21, 153),

Gene: Keshu\_1 Start: 51, Stop: 194, Start Num: 12

Candidate Starts for Keshu\_1:

(Start: 12 @51 has 16 MA's), (16, 66), (21, 87),

Gene: Kraw\_1 Start: 117, Stop: 254, Start Num: 15

Candidate Starts for Kraw\_1:

(Start: 15 @117 has 20 MA's), (18, 141), (21, 153),

Gene: Lea83\_1 Start: 51, Stop: 194, Start Num: 12

Candidate Starts for Lea83\_1:

(Start: 12 @51 has 16 MA's), (16, 66), (21, 87),

Gene: Lebo14\_1 Start: 117, Stop: 254, Start Num: 15

Candidate Starts for Lebo14\_1:

(Start: 15 @117 has 20 MA's), (18, 141), (21, 153),

Gene: MacnCheese\_1 Start: 51, Stop: 197, Start Num: 12

Candidate Starts for MacnCheese\_1:

(Start: 12 @51 has 16 MA's), (21, 90),

Gene: Malthus\_1 Start: 117, Stop: 254, Start Num: 15

Candidate Starts for Malthus\_1:

(Start: 15 @117 has 20 MA's), (18, 141), (21, 153),

Gene: Marcoliusprime\_1 Start: 88, Stop: 222, Start Num: 12

Candidate Starts for Marcoliusprime\_1:

(Start: 12 @88 has 16 MA's), (17, 103), (25, 157), (26, 178), (27, 181),

Gene: Milly\_1 Start: 88, Stop: 222, Start Num: 12

Candidate Starts for Milly\_1:

(Start: 12 @88 has 16 MA's), (17, 103), (25, 157), (26, 178), (27, 181),

Gene: MissDaisy\_1 Start: 117, Stop: 254, Start Num: 15

Candidate Starts for MissDaisy\_1:

(Start: 15 @117 has 20 MA's), (18, 141), (21, 153),

Gene: Mitti\_1 Start: 117, Stop: 254, Start Num: 15

Candidate Starts for Mitti\_1:

(Start: 15 @117 has 20 MA's), (18, 141), (21, 153),

Gene: Mufasa\_1 Start: 88, Stop: 222, Start Num: 12

Candidate Starts for Mufasa\_1:

(Start: 12 @88 has 16 MA's), (17, 103), (25, 157), (26, 178), (27, 181),

Gene: November\_1 Start: 69, Stop: 209, Start Num: 13

Candidate Starts for November\_1:

(Start: 13 @69 has 8 MA's), (26, 162), (27, 165),

Gene: OmniCritical\_1 Start: 117, Stop: 254, Start Num: 15

Candidate Starts for OmniCritical\_1:

(Start: 15 @117 has 20 MA's), (18, 141), (21, 153),

Gene: Patt\_1 Start: 117, Stop: 254, Start Num: 15

Candidate Starts for Patt\_1:

(Start: 15 @117 has 20 MA's), (18, 141), (21, 153),

Gene: Pharb\_1 Start: 51, Stop: 191, Start Num: 13

Candidate Starts for Pharb\_1:

(Start: 13 @51 has 8 MA's), (21, 87),

Gene: Pixie\_1 Start: 51, Stop: 194, Start Num: 12

Candidate Starts for Pixie\_1:

(Start: 12 @51 has 16 MA's), (16, 66), (21, 87),

Gene: Reptar3000\_1 Start: 116, Stop: 253, Start Num: 15

Candidate Starts for Reptar3000\_1:

(Start: 15 @116 has 20 MA's), (18, 140), (21, 152),

Gene: Ruthiejr\_1 Start: 117, Stop: 254, Start Num: 15

Candidate Starts for Ruthiejr\_1:

(Start: 15 @117 has 20 MA's), (18, 141), (21, 153),

Gene: SamScheppers\_1 Start: 116, Stop: 253, Start Num: 15

Candidate Starts for SamScheppers\_1:  
(Start: 15 @116 has 20 MA's), (18, 140), (21, 152),

Gene: ShedlockHolmes\_1 Start: 51, Stop: 194, Start Num: 12  
Candidate Starts for ShedlockHolmes\_1:  
(Start: 12 @51 has 16 MA's), (16, 66), (21, 87),

Gene: Slarp\_1 Start: 117, Stop: 254, Start Num: 15  
Candidate Starts for Slarp\_1:  
(Start: 15 @117 has 20 MA's), (18, 141), (21, 153),

Gene: Strobilo\_1 Start: 88, Stop: 222, Start Num: 12  
Candidate Starts for Strobilo\_1:  
(Start: 12 @88 has 16 MA's), (17, 103), (25, 157), (26, 178), (27, 181),

Gene: TBond007\_1 Start: 51, Stop: 194, Start Num: 12  
Candidate Starts for TBond007\_1:  
(Start: 12 @51 has 16 MA's), (16, 66), (21, 87),

Gene: TClif\_1 Start: 73, Stop: 243, Start Num: 7  
Candidate Starts for TClif\_1:  
(2, 1), (3, 7), (Start: 7 @73 has 1 MA's), (20, 133), (23, 145),

Gene: TM4\_1 Start: 100, Stop: 234, Start Num: 14  
Candidate Starts for TM4\_1:  
(Start: 14 @100 has 1 MA's), (17, 115), (26, 190),

Gene: Taquito\_1 Start: 117, Stop: 254, Start Num: 15  
Candidate Starts for Taquito\_1:  
(Start: 15 @117 has 20 MA's), (18, 141), (21, 153),

Gene: TingHuaYa\_1 Start: 86, Stop: 271, Start Num: 8  
Candidate Starts for TingHuaYa\_1:  
(6, 71), (8, 86), (19, 152), (26, 221),

Gene: TribelTrouble\_1 Start: 51, Stop: 197, Start Num: 12  
Candidate Starts for TribelTrouble\_1:  
(Start: 12 @51 has 16 MA's), (21, 90),

Gene: Wintermute\_1 Start: 116, Stop: 253, Start Num: 15  
Candidate Starts for Wintermute\_1:  
(Start: 15 @116 has 20 MA's), (18, 140), (21, 152),

Gene: Y10\_01 Start: 117, Stop: 254, Start Num: 15  
Candidate Starts for Y10\_01:  
(Start: 15 @117 has 20 MA's), (18, 141), (21, 153),

Gene: Y2\_01 Start: 117, Stop: 254, Start Num: 15  
Candidate Starts for Y2\_01:  
(Start: 15 @117 has 20 MA's), (18, 141), (21, 153),

Gene: ZoeJ\_1 Start: 88, Stop: 222, Start Num: 12  
Candidate Starts for ZoeJ\_1:



(Start: 12 @88 has 16 MA's), (17, 103), (25, 157), (26, 178), (27, 181),