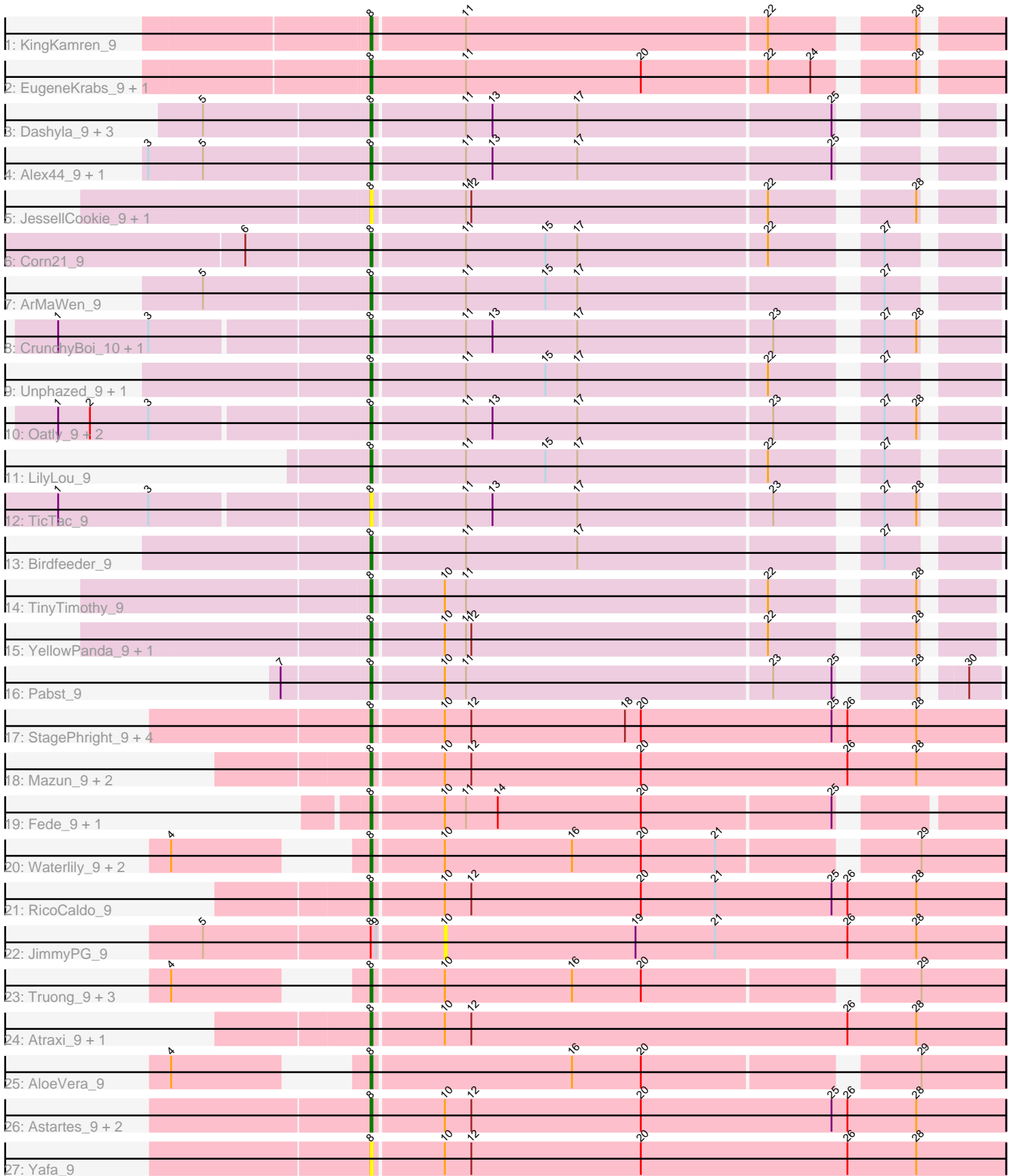


Pham 216232



Note: Tracks are now grouped by subcluster and scaled. Switching in subcluster is indicated by changes in track color. Track scale is now set by default to display the region 30 bp upstream of start 1 to 30 bp downstream of the last possible start. If this default region is judged to be packed too tightly with annotated starts, the track will be further scaled to only show that region of the ORF with annotated starts. This action will be indicated by adding "Zoomed" to the title. For starts, yellow indicates the location of called starts comprised solely of Glimmer/GeneMark auto-annotations, green indicates the location of called starts with at least 1 manual gene annotation.

Pham 216232 Report

This analysis was run 02/22/25 on database version 588.

Pham number 216232 has 53 members, 12 are drafts.

Phages represented in each track:

- Track 1 : KingKamren_9
- Track 2 : EugeneKrabs_9, Zhengyi_9
- Track 3 : Dashyla_9, Phogo_9, SwissCheezer_9, Xitlalli_9
- Track 4 : Alex44_9, Stormbreaker_9
- Track 5 : JessellCookie_9, MiamiPanther_9
- Track 6 : Corn21_9
- Track 7 : ArMaWen_9
- Track 8 : CrunchyBoi_10, PineapplePluto_10
- Track 9 : Unphazed_9, DumpQuist_9
- Track 10 : Oatly_9, Biozilla_9, HitchHiker_10
- Track 11 : LilyLou_9
- Track 12 : TicTac_9
- Track 13 : Birdfeeder_9
- Track 14 : TinyTimothy_9
- Track 15 : YellowPanda_9, Wesak_9
- Track 16 : Pabst_9
- Track 17 : StagePhright_9, Phracted_9, Pharky_9, Phedro_9, Fullmetal_9
- Track 18 : Mazun_9, TrippleS_9, ThirteenKH_9
- Track 19 : Fede_9, Kosier_9
- Track 20 : Waterlily_9, Akoni_9, Ashton_9
- Track 21 : RicoCaldo_9
- Track 22 : JimmyPG_9
- Track 23 : Truong_9, Barroma_9, JordanFarm_9, ShyRosie_9
- Track 24 : Atraxi_9, Morrill_9
- Track 25 : AloeVera_9
- Track 26 : Astartes_9, PhriedRice_9, Moleficent_9
- Track 27 : Yafa_9

Summary of Final Annotations (See graph section above for start numbers):

The start number called the most often in the published annotations is 8, it was called in 41 of the 41 non-draft genes in the pham.

Genes that call this "Most Annotated" start:

- Akoni_9, Alex44_9, AloeVera_9, ArMaWen_9, Ashton_9, Astartes_9, Atraxi_9, Barroma_9, Biozilla_9, Birdfeeder_9, Corn21_9, CrunchyBoi_10, Dashyla_9, DumpQuist_9, EugeneKrabs_9, Fede_9, Fullmetal_9, HitchHiker_10, JessellCookie_9, JordanFarm_9, KingKamren_9, Kosier_9, LilyLou_9, Mazun_9, MiamiPanther_9, Moleficent_9, Morrill_9, Oatly_9, Pabst_9, Pharky_9, Phedro_9, Phogo_9, Phracted_9, PhriedRice_9, PineapplePluto_10, RicoCaldo_9, ShyRosie_9, StagePhright_9, Stormbreaker_9, SwissCheezer_9, ThirteenKH_9, TicTac_9, TinyTimothy_9, TrippleS_9, Truong_9, Unphazed_9, Waterlily_9, Wesak_9, Xitlalli_9, Yafa_9, YellowPanda_9, Zhengyi_9,

Genes that have the "Most Annotated" start but do not call it:

- JimmyPG_9,

Genes that do not have the "Most Annotated" start:

-

Summary by start number:

Start 8:

- Found in 53 of 53 (100.0%) of genes in pham
- Manual Annotations of this start: 41 of 41
- Called 98.1% of time when present
- Phage (with cluster) where this start called: Akoni_9 (EK2), Alex44_9 (EK1), AloeVera_9 (EK2), ArMaWen_9 (EK1), Ashton_9 (EK2), Astartes_9 (EK2), Atraxi_9 (EK2), Barroma_9 (EK2), Biozilla_9 (EK1), Birdfeeder_9 (EK1), Corn21_9 (EK1), CrunchyBoi_10 (EK1), Dashyla_9 (EK1), DumpQuist_9 (EK1), EugeneKrabs_9 (EK), Fede_9 (EK2), Fullmetal_9 (EK2), HitchHiker_10 (EK1), JessellCookie_9 (EK1), JordanFarm_9 (EK2), KingKamren_9 (EK), Kosier_9 (EK2), LilyLou_9 (EK1), Mazun_9 (EK2), MiamiPanther_9 (EK1), Moleficent_9 (EK2), Morrill_9 (EK2), Oatly_9 (EK1), Pabst_9 (EK1), Pharky_9 (EK2), Phedro_9 (EK2), Phogo_9 (EK1), Phracted_9 (EK2), PhriedRice_9 (EK2), PineapplePluto_10 (EK1), RicoCaldo_9 (EK2), ShyRosie_9 (EK2), StagePhright_9 (EK2), Stormbreaker_9 (EK1), SwissCheezer_9 (EK1), ThirteenKH_9 (EK2), TicTac_9 (EK1), TinyTimothy_9 (EK1), TrippleS_9 (EK2), Truong_9 (EK2), Unphazed_9 (EK1), Waterlily_9 (EK2), Wesak_9 (EK1), Xitlalli_9 (EK1), Yafa_9 (EK2), YellowPanda_9 (EK1), Zhengyi_9 (EK),

Start 10:

- Found in 29 of 53 (54.7%) of genes in pham
- No Manual Annotations of this start.
- Called 3.4% of time when present
- Phage (with cluster) where this start called: JimmyPG_9 (EK2),

Summary by clusters:

There are 3 clusters represented in this pham: EK, EK2, EK1,

Info for manual annotations of cluster EK:

- Start number 8 was manually annotated 3 times for cluster EK.

Info for manual annotations of cluster EK1:

- Start number 8 was manually annotated 18 times for cluster EK1.

Info for manual annotations of cluster EK2:

- Start number 8 was manually annotated 20 times for cluster EK2.

Gene Information:

Gene: Akoni_9 Start: 6089, Stop: 5751, Start Num: 8

Candidate Starts for Akoni_9:

(4, 6161), (Start: 8 @6089 has 41 MA's), (10, 6050), (16, 5978), (20, 5939), (21, 5897), (29, 5798),

Gene: Alex44_9 Start: 6356, Stop: 6036, Start Num: 8

Candidate Starts for Alex44_9:

(3, 6476), (5, 6446), (Start: 8 @6356 has 41 MA's), (11, 6305), (13, 6290), (17, 6242), (25, 6101),

Gene: AloeVera_9 Start: 6089, Stop: 5751, Start Num: 8

Candidate Starts for AloeVera_9:

(4, 6161), (Start: 8 @6089 has 41 MA's), (16, 5978), (20, 5939), (29, 5798),

Gene: ArMaWen_9 Start: 6356, Stop: 6033, Start Num: 8

Candidate Starts for ArMaWen_9:

(5, 6446), (Start: 8 @6356 has 41 MA's), (11, 6305), (15, 6260), (17, 6242), (27, 6086),

Gene: Ashton_9 Start: 6093, Stop: 5755, Start Num: 8

Candidate Starts for Ashton_9:

(4, 6165), (Start: 8 @6093 has 41 MA's), (10, 6054), (16, 5982), (20, 5943), (21, 5901), (29, 5802),

Gene: Astartes_9 Start: 6131, Stop: 5775, Start Num: 8

Candidate Starts for Astartes_9:

(Start: 8 @6131 has 41 MA's), (10, 6092), (12, 6077), (20, 5981), (25, 5873), (26, 5864), (28, 5825),

Gene: Atraxi_9 Start: 6096, Stop: 5740, Start Num: 8

Candidate Starts for Atraxi_9:

(Start: 8 @6096 has 41 MA's), (10, 6057), (12, 6042), (26, 5829), (28, 5790),

Gene: Barroma_9 Start: 6089, Stop: 5751, Start Num: 8

Candidate Starts for Barroma_9:

(4, 6161), (Start: 8 @6089 has 41 MA's), (10, 6050), (16, 5978), (20, 5939), (29, 5798),

Gene: Biozilla_9 Start: 6310, Stop: 5987, Start Num: 8

Candidate Starts for Biozilla_9:

(1, 6478), (2, 6460), (3, 6427), (Start: 8 @6310 has 41 MA's), (11, 6259), (13, 6244), (17, 6196), (23, 6088), (27, 6040), (28, 6022),

Gene: Birdfeeder_9 Start: 6368, Stop: 6045, Start Num: 8

Candidate Starts for Birdfeeder_9:

(Start: 8 @6368 has 41 MA's), (11, 6317), (17, 6254), (27, 6098),

Gene: Corn21_9 Start: 6384, Stop: 6061, Start Num: 8

Candidate Starts for Corn21_9:

(6, 6450), (Start: 8 @6384 has 41 MA's), (11, 6333), (15, 6288), (17, 6270), (22, 6165), (27, 6114),

Gene: CrunchyBoi_10 Start: 6445, Stop: 6122, Start Num: 8

Candidate Starts for CrunchyBoi_10:

(1, 6613), (3, 6562), (Start: 8 @6445 has 41 MA's), (11, 6394), (13, 6379), (17, 6331), (23, 6223), (27, 6175), (28, 6157),

Gene: Dashyla_9 Start: 6362, Stop: 6042, Start Num: 8

Candidate Starts for Dashyla_9:

(5, 6452), (Start: 8 @6362 has 41 MA's), (11, 6311), (13, 6296), (17, 6248), (25, 6107),

Gene: DumpQuist_9 Start: 6359, Stop: 6036, Start Num: 8

Candidate Starts for DumpQuist_9:

(Start: 8 @6359 has 41 MA's), (11, 6308), (15, 6263), (17, 6245), (22, 6140), (27, 6089),

Gene: EugeneKrabs_9 Start: 6127, Stop: 5798, Start Num: 8

Candidate Starts for EugeneKrabs_9:

(Start: 8 @6127 has 41 MA's), (11, 6073), (20, 5974), (22, 5905), (24, 5881), (28, 5836),

Gene: Fede_9 Start: 6342, Stop: 6010, Start Num: 8

Candidate Starts for Fede_9:

(Start: 8 @6342 has 41 MA's), (10, 6303), (11, 6291), (14, 6273), (20, 6192), (25, 6087),

Gene: Fullmetal_9 Start: 6128, Stop: 5772, Start Num: 8

Candidate Starts for Fullmetal_9:

(Start: 8 @6128 has 41 MA's), (10, 6089), (12, 6074), (18, 5987), (20, 5978), (25, 5870), (26, 5861), (28, 5822),

Gene: HitchHiker_10 Start: 6310, Stop: 5987, Start Num: 8

Candidate Starts for HitchHiker_10:

(1, 6478), (2, 6460), (3, 6427), (Start: 8 @6310 has 41 MA's), (11, 6259), (13, 6244), (17, 6196), (23, 6088), (27, 6040), (28, 6022),

Gene: JessellCookie_9 Start: 6219, Stop: 5899, Start Num: 8

Candidate Starts for JessellCookie_9:

(Start: 8 @6219 has 41 MA's), (11, 6168), (12, 6165), (22, 6000), (28, 5931),

Gene: JimmyPG_9 Start: 6069, Stop: 5752, Start Num: 10

Candidate Starts for JimmyPG_9:

(5, 6201), (Start: 8 @6108 has 41 MA's), (9, 6105), (10, 6069), (19, 5961), (21, 5916), (26, 5841), (28, 5802),

Gene: JordanFarm_9 Start: 6089, Stop: 5751, Start Num: 8

Candidate Starts for JordanFarm_9:

(4, 6161), (Start: 8 @6089 has 41 MA's), (10, 6050), (16, 5978), (20, 5939), (29, 5798),

Gene: KingKamren_9 Start: 6124, Stop: 5798, Start Num: 8

Candidate Starts for KingKamren_9:

(Start: 8 @6124 has 41 MA's), (11, 6073), (22, 5905), (28, 5836),

Gene: Kosier_9 Start: 6342, Stop: 6010, Start Num: 8

Candidate Starts for Kosier_9:

(Start: 8 @6342 has 41 MA's), (10, 6303), (11, 6291), (14, 6273), (20, 6192), (25, 6087),

Gene: LilyLou_9 Start: 6368, Stop: 6045, Start Num: 8

Candidate Starts for LilyLou_9:

(Start: 8 @6368 has 41 MA's), (11, 6317), (15, 6272), (17, 6254), (22, 6149), (27, 6098),

Gene: Mazun_9 Start: 6131, Stop: 5775, Start Num: 8

Candidate Starts for Mazun_9:

(Start: 8 @6131 has 41 MA's), (10, 6092), (12, 6077), (20, 5981), (26, 5864), (28, 5825),

Gene: MiamiPanther_9 Start: 6219, Stop: 5899, Start Num: 8

Candidate Starts for MiamiPanther_9:

(Start: 8 @6219 has 41 MA's), (11, 6168), (12, 6165), (22, 6000), (28, 5931),

Gene: Moleficient_9 Start: 6125, Stop: 5769, Start Num: 8

Candidate Starts for Moleficient_9:

(Start: 8 @6125 has 41 MA's), (10, 6086), (12, 6071), (20, 5975), (25, 5867), (26, 5858), (28, 5819),

Gene: Morrill_9 Start: 6080, Stop: 5724, Start Num: 8

Candidate Starts for Morrill_9:

(Start: 8 @6080 has 41 MA's), (10, 6041), (12, 6026), (26, 5813), (28, 5774),

Gene: Oatly_9 Start: 6310, Stop: 5987, Start Num: 8

Candidate Starts for Oatly_9:

(1, 6478), (2, 6460), (3, 6427), (Start: 8 @6310 has 41 MA's), (11, 6259), (13, 6244), (17, 6196), (23, 6088), (27, 6040), (28, 6022),

Gene: Pabst_9 Start: 6171, Stop: 5848, Start Num: 8

Candidate Starts for Pabst_9:

(7, 6219), (Start: 8 @6171 has 41 MA's), (10, 6132), (11, 6120), (23, 5949), (25, 5916), (28, 5883), (30, 5865),

Gene: Pharky_9 Start: 6092, Stop: 5736, Start Num: 8

Candidate Starts for Pharky_9:

(Start: 8 @6092 has 41 MA's), (10, 6053), (12, 6038), (18, 5951), (20, 5942), (25, 5834), (26, 5825), (28, 5786),

Gene: Phedro_9 Start: 6092, Stop: 5736, Start Num: 8

Candidate Starts for Phedro_9:

(Start: 8 @6092 has 41 MA's), (10, 6053), (12, 6038), (18, 5951), (20, 5942), (25, 5834), (26, 5825), (28, 5786),

Gene: Phogo_9 Start: 6365, Stop: 6045, Start Num: 8

Candidate Starts for Phogo_9:

(5, 6455), (Start: 8 @6365 has 41 MA's), (11, 6314), (13, 6299), (17, 6251), (25, 6110),

Gene: Phracted_9 Start: 6092, Stop: 5736, Start Num: 8

Candidate Starts for Phracted_9:

(Start: 8 @6092 has 41 MA's), (10, 6053), (12, 6038), (18, 5951), (20, 5942), (25, 5834), (26, 5825), (28, 5786),

Gene: PhriedRice_9 Start: 6092, Stop: 5736, Start Num: 8

Candidate Starts for PhriedRice_9:

(Start: 8 @6092 has 41 MA's), (10, 6053), (12, 6038), (20, 5942), (25, 5834), (26, 5825), (28, 5786),

Gene: PineapplePluto_10 Start: 6454, Stop: 6131, Start Num: 8

Candidate Starts for PineapplePluto_10:

(1, 6622), (3, 6571), (Start: 8 @6454 has 41 MA's), (11, 6403), (13, 6388), (17, 6340), (23, 6232), (27, 6184), (28, 6166),

Gene: RicoCaldo_9 Start: 6122, Stop: 5766, Start Num: 8

Candidate Starts for RicoCaldo_9:

(Start: 8 @6122 has 41 MA's), (10, 6083), (12, 6068), (20, 5972), (21, 5930), (25, 5864), (26, 5855), (28, 5816),

Gene: ShyRosie_9 Start: 6089, Stop: 5751, Start Num: 8

Candidate Starts for ShyRosie_9:

(4, 6161), (Start: 8 @6089 has 41 MA's), (10, 6050), (16, 5978), (20, 5939), (29, 5798),

Gene: StagePhright_9 Start: 6092, Stop: 5736, Start Num: 8

Candidate Starts for StagePhright_9:

(Start: 8 @6092 has 41 MA's), (10, 6053), (12, 6038), (18, 5951), (20, 5942), (25, 5834), (26, 5825), (28, 5786),

Gene: Stormbreaker_9 Start: 6347, Stop: 6027, Start Num: 8

Candidate Starts for Stormbreaker_9:

(3, 6467), (5, 6437), (Start: 8 @6347 has 41 MA's), (11, 6296), (13, 6281), (17, 6233), (25, 6092),

Gene: SwissCheezer_9 Start: 6356, Stop: 6036, Start Num: 8

Candidate Starts for SwissCheezer_9:

(5, 6446), (Start: 8 @6356 has 41 MA's), (11, 6305), (13, 6290), (17, 6242), (25, 6101),

Gene: ThirteenKH_9 Start: 6080, Stop: 5724, Start Num: 8

Candidate Starts for ThirteenKH_9:

(Start: 8 @6080 has 41 MA's), (10, 6041), (12, 6026), (20, 5930), (26, 5813), (28, 5774),

Gene: TicTac_9 Start: 6319, Stop: 5996, Start Num: 8

Candidate Starts for TicTac_9:

(1, 6487), (3, 6436), (Start: 8 @6319 has 41 MA's), (11, 6268), (13, 6253), (17, 6205), (23, 6097), (27, 6049), (28, 6031),

Gene: TinyTimothy_9 Start: 6219, Stop: 5899, Start Num: 8

Candidate Starts for TinyTimothy_9:

(Start: 8 @6219 has 41 MA's), (10, 6180), (11, 6168), (22, 6000), (28, 5931),

Gene: TrippleS_9 Start: 6080, Stop: 5724, Start Num: 8

Candidate Starts for TrippleS_9:

(Start: 8 @6080 has 41 MA's), (10, 6041), (12, 6026), (20, 5930), (26, 5813), (28, 5774),

Gene: Truong_9 Start: 6089, Stop: 5751, Start Num: 8

Candidate Starts for Truong_9:

(4, 6161), (Start: 8 @6089 has 41 MA's), (10, 6050), (16, 5978), (20, 5939), (29, 5798),

Gene: Unphazed_9 Start: 6368, Stop: 6045, Start Num: 8

Candidate Starts for Unphazed_9:

(Start: 8 @6368 has 41 MA's), (11, 6317), (15, 6272), (17, 6254), (22, 6149), (27, 6098),

Gene: Waterlily_9 Start: 6089, Stop: 5751, Start Num: 8

Candidate Starts for Waterlily_9:

(4, 6161), (Start: 8 @6089 has 41 MA's), (10, 6050), (16, 5978), (20, 5939), (21, 5897), (29, 5798),

Gene: Wesak_9 Start: 6219, Stop: 5899, Start Num: 8

Candidate Starts for Wesak_9:

(Start: 8 @6219 has 41 MA's), (10, 6180), (11, 6168), (12, 6165), (22, 6000), (28, 5931),

Gene: Xitlalli_9 Start: 6353, Stop: 6033, Start Num: 8

Candidate Starts for Xitlalli_9:

(5, 6443), (Start: 8 @6353 has 41 MA's), (11, 6302), (13, 6287), (17, 6239), (25, 6098),

Gene: Yafa_9 Start: 6095, Stop: 5739, Start Num: 8

Candidate Starts for Yafa_9:

(Start: 8 @6095 has 41 MA's), (10, 6056), (12, 6041), (20, 5945), (26, 5828), (28, 5789),

Gene: YellowPanda_9 Start: 6219, Stop: 5899, Start Num: 8

Candidate Starts for YellowPanda_9:

(Start: 8 @6219 has 41 MA's), (10, 6180), (11, 6168), (12, 6165), (22, 6000), (28, 5931),

Gene: Zhengyi_9 Start: 6127, Stop: 5798, Start Num: 8

Candidate Starts for Zhengyi_9:

(Start: 8 @6127 has 41 MA's), (11, 6073), (20, 5974), (22, 5905), (24, 5881), (28, 5836),