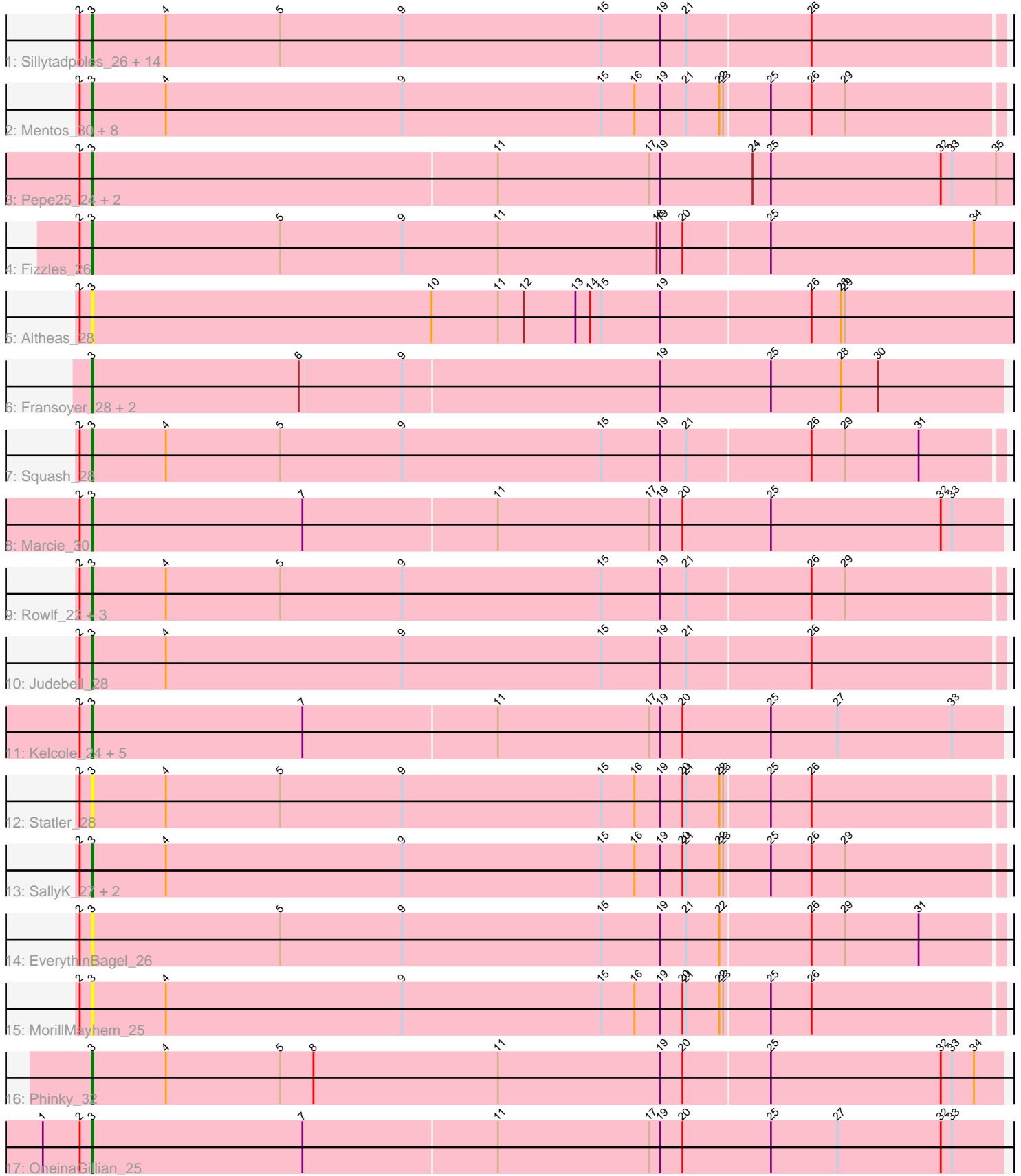


Pham 216234



Note: Tracks are now grouped by subcluster and scaled. Switching in subcluster is indicated by changes in track color. Track scale is now set by default to display the region 30 bp upstream of start 1 to 30 bp downstream of the last possible start. If this default region is judged to be packed too tightly with annotated starts, the track will be further scaled to only show that region of the ORF with annotated starts. This action will be indicated by adding "Zoomed" to the title. For starts, yellow indicates the location of called starts comprised solely of Glimmer/GeneMark auto-annotations, green indicates the location of called starts with at least 1 manual gene annotation.

Pham 216234 Report

This analysis was run 02/22/25 on database version 588.

Pham number 216234 has 53 members, 13 are drafts.

Phages represented in each track:

- Track 1 : Sillytadpoles_26, Jehoshaphat_28, FrankDeliGuy_24, Llemily_26, Teehee_27, DonaldDuck_26, Phabia_26, Quammi_24, Viceroy_25, Lonelysoil_25, Zhafia_29, Casend_27, Wayne3_27, Wheelie_25, Rudy_24
- Track 2 : Mentos_30, Kyva_28, AluminumJesus_24, Gazebo_25, Grassboy_27, Namago_26, Mashley_24, Hyperion_25, StrawberryJamm_28
- Track 3 : Pepe25_24, Wilca_25, BirdInFrench_25
- Track 4 : Fizzles_26
- Track 5 : Altheas_28
- Track 6 : Fransoyer_28, RubyRalph_28, SadLad_30
- Track 7 : Squash_28
- Track 8 : Marcie_30
- Track 9 : Rowlf_22, Nike_26, Zagie_26, BabyDotz_25
- Track 10 : Judebell_28
- Track 11 : Kelcole_24, Romm_27, RobinRose_27, Tempo_25, Fregley_26, CandC_24
- Track 12 : Statler_28
- Track 13 : SallyK_27, Tissue_26, Blab_24
- Track 14 : EverythinBagel_26
- Track 15 : MorillMayhem_25
- Track 16 : Phinky_32
- Track 17 : OneinaGillian_25

Summary of Final Annotations (See graph section above for start numbers):

The start number called the most often in the published annotations is 3, it was called in 40 of the 40 non-draft genes in the pham.

Genes that call this "Most Annotated" start:

- Altheas_28, AluminumJesus_24, BabyDotz_25, BirdInFrench_25, Blab_24, CandC_24, Casend_27, DonaldDuck_26, EverythinBagel_26, Fizzles_26, FrankDeliGuy_24, Fransoyer_28, Fregley_26, Gazebo_25, Grassboy_27, Hyperion_25, Jehoshaphat_28, Judebell_28, Kelcole_24, Kyva_28, Llemily_26, Lonelysoil_25, Marcie_30, Mashley_24, Mentos_30, MorillMayhem_25, Namago_26, Nike_26, OneinaGillian_25, Pepe25_24, Phabia_26, Phinky_32, Quammi_24,

RobinRose_27, Romm_27, Rowlf_22, RubyRalph_28, Rudy_24, SadLad_30, SallyK_27, Sillytadpoles_26, Squash_28, Statler_28, StrawberryJamm_28, Teehee_27, Tempo_25, Tissue_26, Viceroy_25, Wayne3_27, Wheelie_25, Wilca_25, Zagie_26, Zhafia_29,

Genes that have the "Most Annotated" start but do not call it:

-

Genes that do not have the "Most Annotated" start:

-

Summary by start number:

Start 3:

- Found in 53 of 53 (100.0%) of genes in pham
- Manual Annotations of this start: 40 of 40
- Called 100.0% of time when present
- Phage (with cluster) where this start called: Altheas_28 (EG), AluminumJesus_24 (EG), BabyDotz_25 (EG), BirdInFrench_25 (EG), Blab_24 (EG), CandC_24 (EG), Casend_27 (EG), DonaldDuck_26 (EG), EverythinBagel_26 (EG), Fizzles_26 (EG), FrankDeliGuy_24 (EG), Fransoyer_28 (EG), Fregley_26 (EG), Gazebo_25 (EG), Grassboy_27 (EG), Hyperion_25 (EG), Jehoshaphat_28 (EG), Judebell_28 (EG), Kelcole_24 (EG), Kyva_28 (EG), Llemily_26 (EG), Lonelysoil_25 (EG), Marcie_30 (EG), Mashley_24 (EG), Mentos_30 (EG), MorillMayhem_25 (EG), Namago_26 (EG), Nike_26 (EG), OneinaGillian_25 (EG), Pepe25_24 (EG), Phabia_26 (EG), Phinky_32 (EG), Quammi_24 (EG), RobinRose_27 (EG), Romm_27 (EG), Rowlf_22 (EG), RubyRalph_28 (EG), Rudy_24 (EG), SadLad_30 (EG), SallyK_27 (EG), Sillytadpoles_26 (EG), Squash_28 (EG), Statler_28 (EG), StrawberryJamm_28 (EG), Teehee_27 (EG), Tempo_25 (EG), Tissue_26 (EG), Viceroy_25 (EG), Wayne3_27 (EG), Wheelie_25 (EG), Wilca_25 (EG), Zagie_26 (EG), Zhafia_29 (EG),

Summary by clusters:

There is one cluster represented in this pham: EG

Info for manual annotations of cluster EG:

- Start number 3 was manually annotated 40 times for cluster EG.

Gene Information:

Gene: Altheas_28 Start: 16384, Stop: 17130, Start Num: 3

Candidate Starts for Altheas_28:

(2, 16375), (Start: 3 @16384 has 40 MA's), (10, 16660), (11, 16714), (12, 16735), (13, 16777), (14, 16789), (15, 16798), (19, 16846), (26, 16966), (28, 16990), (29, 16993),

Gene: AluminumJesus_24 Start: 15744, Stop: 16478, Start Num: 3

Candidate Starts for AluminumJesus_24:

(2, 15735), (Start: 3 @15744 has 40 MA's), (4, 15804), (9, 15996), (15, 16158), (16, 16185), (19, 16206), (21, 16227), (22, 16254), (23, 16257), (25, 16293), (26, 16326), (29, 16353),

Gene: BabyDotz_25 Start: 16013, Stop: 16747, Start Num: 3

Candidate Starts for BabyDotz_25:

(2, 16004), (Start: 3 @16013 has 40 MA's), (4, 16073), (5, 16166), (9, 16265), (15, 16427), (19, 16475), (21, 16496), (26, 16595), (29, 16622),

Gene: BirdInFrench_25 Start: 14837, Stop: 15583, Start Num: 3

Candidate Starts for BirdInFrench_25:

(2, 14828), (Start: 3 @14837 has 40 MA's), (11, 15164), (17, 15287), (19, 15296), (24, 15371), (25, 15386), (32, 15524), (33, 15533), (35, 15569),

Gene: Blab_24 Start: 15642, Stop: 16376, Start Num: 3

Candidate Starts for Blab_24:

(2, 15633), (Start: 3 @15642 has 40 MA's), (4, 15702), (9, 15894), (15, 16056), (16, 16083), (19, 16104), (20, 16122), (21, 16125), (22, 16152), (23, 16155), (25, 16191), (26, 16224), (29, 16251),

Gene: CandC_24 Start: 14442, Stop: 15179, Start Num: 3

Candidate Starts for CandC_24:

(2, 14433), (Start: 3 @14442 has 40 MA's), (7, 14613), (11, 14769), (17, 14892), (19, 14901), (20, 14919), (25, 14991), (27, 15045), (33, 15138),

Gene: Casend_27 Start: 16359, Stop: 17093, Start Num: 3

Candidate Starts for Casend_27:

(2, 16350), (Start: 3 @16359 has 40 MA's), (4, 16419), (5, 16512), (9, 16611), (15, 16773), (19, 16821), (21, 16842), (26, 16941),

Gene: DonaldDuck_26 Start: 15705, Stop: 16439, Start Num: 3

Candidate Starts for DonaldDuck_26:

(2, 15696), (Start: 3 @15705 has 40 MA's), (4, 15765), (5, 15858), (9, 15957), (15, 16119), (19, 16167), (21, 16188), (26, 16287),

Gene: EverythinBagel_26 Start: 16093, Stop: 16827, Start Num: 3

Candidate Starts for EverythinBagel_26:

(2, 16084), (Start: 3 @16093 has 40 MA's), (5, 16246), (9, 16345), (15, 16507), (19, 16555), (21, 16576), (22, 16603), (26, 16675), (29, 16702), (31, 16762),

Gene: Fizzles_26 Start: 15665, Stop: 16411, Start Num: 3

Candidate Starts for Fizzles_26:

(2, 15656), (Start: 3 @15665 has 40 MA's), (5, 15818), (9, 15917), (11, 15995), (18, 16124), (19, 16127), (20, 16145), (25, 16214), (34, 16379),

Gene: FrankDeliGuy_24 Start: 15667, Stop: 16401, Start Num: 3

Candidate Starts for FrankDeliGuy_24:

(2, 15658), (Start: 3 @15667 has 40 MA's), (4, 15727), (5, 15820), (9, 15919), (15, 16081), (19, 16129), (21, 16150), (26, 16249),

Gene: Fransoyer_28 Start: 15730, Stop: 16464, Start Num: 3

Candidate Starts for Fransoyer_28:

(Start: 3 @15730 has 40 MA's), (6, 15898), (9, 15979), (19, 16186), (25, 16276), (28, 16333), (30, 16363),

Gene: Fregley_26 Start: 15015, Stop: 15752, Start Num: 3

Candidate Starts for Fregley_26:

(2, 15006), (Start: 3 @15015 has 40 MA's), (7, 15186), (11, 15342), (17, 15465), (19, 15474), (20, 15492), (25, 15564), (27, 15618), (33, 15711),

Gene: Gazebo_25 Start: 16208, Stop: 16942, Start Num: 3

Candidate Starts for Gazebo_25:

(2, 16199), (Start: 3 @16208 has 40 MA's), (4, 16268), (9, 16460), (15, 16622), (16, 16649), (19, 16670), (21, 16691), (22, 16718), (23, 16721), (25, 16757), (26, 16790), (29, 16817),

Gene: Grassboy_27 Start: 16381, Stop: 17115, Start Num: 3

Candidate Starts for Grassboy_27:

(2, 16372), (Start: 3 @16381 has 40 MA's), (4, 16441), (9, 16633), (15, 16795), (16, 16822), (19, 16843), (21, 16864), (22, 16891), (23, 16894), (25, 16930), (26, 16963), (29, 16990),

Gene: Hyperion_25 Start: 16168, Stop: 16902, Start Num: 3

Candidate Starts for Hyperion_25:

(2, 16159), (Start: 3 @16168 has 40 MA's), (4, 16228), (9, 16420), (15, 16582), (16, 16609), (19, 16630), (21, 16651), (22, 16678), (23, 16681), (25, 16717), (26, 16750), (29, 16777),

Gene: Jehoshaphat_28 Start: 16624, Stop: 17358, Start Num: 3

Candidate Starts for Jehoshaphat_28:

(2, 16615), (Start: 3 @16624 has 40 MA's), (4, 16684), (5, 16777), (9, 16876), (15, 17038), (19, 17086), (21, 17107), (26, 17206),

Gene: Judebell_28 Start: 16165, Stop: 16899, Start Num: 3

Candidate Starts for Judebell_28:

(2, 16156), (Start: 3 @16165 has 40 MA's), (4, 16225), (9, 16417), (15, 16579), (19, 16627), (21, 16648), (26, 16747),

Gene: Kelcole_24 Start: 14867, Stop: 15604, Start Num: 3

Candidate Starts for Kelcole_24:

(2, 14858), (Start: 3 @14867 has 40 MA's), (7, 15038), (11, 15194), (17, 15317), (19, 15326), (20, 15344), (25, 15416), (27, 15470), (33, 15563),

Gene: Kyva_28 Start: 16416, Stop: 17150, Start Num: 3

Candidate Starts for Kyva_28:

(2, 16407), (Start: 3 @16416 has 40 MA's), (4, 16476), (9, 16668), (15, 16830), (16, 16857), (19, 16878), (21, 16899), (22, 16926), (23, 16929), (25, 16965), (26, 16998), (29, 17025),

Gene: Llemily_26 Start: 15400, Stop: 16134, Start Num: 3

Candidate Starts for Llemily_26:

(2, 15391), (Start: 3 @15400 has 40 MA's), (4, 15460), (5, 15553), (9, 15652), (15, 15814), (19, 15862), (21, 15883), (26, 15982),

Gene: Lonelysoil_25 Start: 15645, Stop: 16379, Start Num: 3

Candidate Starts for Lonelysoil_25:

(2, 15636), (Start: 3 @15645 has 40 MA's), (4, 15705), (5, 15798), (9, 15897), (15, 16059), (19, 16107), (21, 16128), (26, 16227),

Gene: Marcie_30 Start: 15548, Stop: 16285, Start Num: 3

Candidate Starts for Marcie_30:

(2, 15539), (Start: 3 @15548 has 40 MA's), (7, 15719), (11, 15875), (17, 15998), (19, 16007), (20, 16025), (25, 16097), (32, 16235), (33, 16244),

Gene: Mashley_24 Start: 15979, Stop: 16713, Start Num: 3

Candidate Starts for Mashley_24:

(2, 15970), (Start: 3 @15979 has 40 MA's), (4, 16039), (9, 16231), (15, 16393), (16, 16420), (19, 16441), (21, 16462), (22, 16489), (23, 16492), (25, 16528), (26, 16561), (29, 16588),

Gene: Mentos_30 Start: 17066, Stop: 17800, Start Num: 3

Candidate Starts for Mentos_30:

(2, 17057), (Start: 3 @17066 has 40 MA's), (4, 17126), (9, 17318), (15, 17480), (16, 17507), (19, 17528), (21, 17549), (22, 17576), (23, 17579), (25, 17615), (26, 17648), (29, 17675),

Gene: MorillMayhem_25 Start: 15978, Stop: 16712, Start Num: 3

Candidate Starts for MorillMayhem_25:

(2, 15969), (Start: 3 @15978 has 40 MA's), (4, 16038), (9, 16230), (15, 16392), (16, 16419), (19, 16440), (20, 16458), (21, 16461), (22, 16488), (23, 16491), (25, 16527), (26, 16560),

Gene: Namago_26 Start: 15546, Stop: 16280, Start Num: 3

Candidate Starts for Namago_26:

(2, 15537), (Start: 3 @15546 has 40 MA's), (4, 15606), (9, 15798), (15, 15960), (16, 15987), (19, 16008), (21, 16029), (22, 16056), (23, 16059), (25, 16095), (26, 16128), (29, 16155),

Gene: Nike_26 Start: 16444, Stop: 17178, Start Num: 3

Candidate Starts for Nike_26:

(2, 16435), (Start: 3 @16444 has 40 MA's), (4, 16504), (5, 16597), (9, 16696), (15, 16858), (19, 16906), (21, 16927), (26, 17026), (29, 17053),

Gene: OneinaGillian_25 Start: 14517, Stop: 15254, Start Num: 3

Candidate Starts for OneinaGillian_25:

(1, 14478), (2, 14508), (Start: 3 @14517 has 40 MA's), (7, 14688), (11, 14844), (17, 14967), (19, 14976), (20, 14994), (25, 15066), (27, 15120), (32, 15204), (33, 15213),

Gene: Pepe25_24 Start: 14854, Stop: 15600, Start Num: 3

Candidate Starts for Pepe25_24:

(2, 14845), (Start: 3 @14854 has 40 MA's), (11, 15181), (17, 15304), (19, 15313), (24, 15388), (25, 15403), (32, 15541), (33, 15550), (35, 15586),

Gene: Phabia_26 Start: 15818, Stop: 16552, Start Num: 3

Candidate Starts for Phabia_26:

(2, 15809), (Start: 3 @15818 has 40 MA's), (4, 15878), (5, 15971), (9, 16070), (15, 16232), (19, 16280), (21, 16301), (26, 16400),

Gene: Phinky_32 Start: 16706, Stop: 17443, Start Num: 3

Candidate Starts for Phinky_32:

(Start: 3 @16706 has 40 MA's), (4, 16766), (5, 16859), (8, 16886), (11, 17036), (19, 17168), (20, 17186), (25, 17255), (32, 17393), (33, 17402), (34, 17420),

Gene: Quammi_24 Start: 15389, Stop: 16123, Start Num: 3

Candidate Starts for Quammi_24:

(2, 15380), (Start: 3 @15389 has 40 MA's), (4, 15449), (5, 15542), (9, 15641), (15, 15803), (19, 15851), (21, 15872), (26, 15971),

Gene: RobinRose_27 Start: 15018, Stop: 15755, Start Num: 3

Candidate Starts for RobinRose_27:

(2, 15009), (Start: 3 @15018 has 40 MA's), (7, 15189), (11, 15345), (17, 15468), (19, 15477), (20, 15495), (25, 15567), (27, 15621), (33, 15714),

Gene: Romm_27 Start: 15018, Stop: 15755, Start Num: 3

Candidate Starts for Romm_27:

(2, 15009), (Start: 3 @15018 has 40 MA's), (7, 15189), (11, 15345), (17, 15468), (19, 15477), (20, 15495), (25, 15567), (27, 15621), (33, 15714),

Gene: Rowlf_22 Start: 15147, Stop: 15881, Start Num: 3

Candidate Starts for Rowlf_22:

(2, 15138), (Start: 3 @15147 has 40 MA's), (4, 15207), (5, 15300), (9, 15399), (15, 15561), (19, 15609), (21, 15630), (26, 15729), (29, 15756),

Gene: RubyRalph_28 Start: 15664, Stop: 16398, Start Num: 3

Candidate Starts for RubyRalph_28:

(Start: 3 @15664 has 40 MA's), (6, 15832), (9, 15913), (19, 16120), (25, 16210), (28, 16267), (30, 16297),

Gene: Rudy_24 Start: 15389, Stop: 16123, Start Num: 3

Candidate Starts for Rudy_24:

(2, 15380), (Start: 3 @15389 has 40 MA's), (4, 15449), (5, 15542), (9, 15641), (15, 15803), (19, 15851), (21, 15872), (26, 15971),

Gene: SadLad_30 Start: 16601, Stop: 17335, Start Num: 3

Candidate Starts for SadLad_30:

(Start: 3 @16601 has 40 MA's), (6, 16769), (9, 16850), (19, 17057), (25, 17147), (28, 17204), (30, 17234),

Gene: SallyK_27 Start: 16535, Stop: 17269, Start Num: 3

Candidate Starts for SallyK_27:

(2, 16526), (Start: 3 @16535 has 40 MA's), (4, 16595), (9, 16787), (15, 16949), (16, 16976), (19, 16997), (20, 17015), (21, 17018), (22, 17045), (23, 17048), (25, 17084), (26, 17117), (29, 17144),

Gene: Sillytadpoles_26 Start: 15387, Stop: 16121, Start Num: 3

Candidate Starts for Sillytadpoles_26:

(2, 15378), (Start: 3 @15387 has 40 MA's), (4, 15447), (5, 15540), (9, 15639), (15, 15801), (19, 15849), (21, 15870), (26, 15969),

Gene: Squash_28 Start: 16457, Stop: 17191, Start Num: 3

Candidate Starts for Squash_28:

(2, 16448), (Start: 3 @16457 has 40 MA's), (4, 16517), (5, 16610), (9, 16709), (15, 16871), (19, 16919), (21, 16940), (26, 17039), (29, 17066), (31, 17126),

Gene: Statler_28 Start: 16369, Stop: 17103, Start Num: 3

Candidate Starts for Statler_28:

(2, 16360), (Start: 3 @16369 has 40 MA's), (4, 16429), (5, 16522), (9, 16621), (15, 16783), (16, 16810), (19, 16831), (20, 16849), (21, 16852), (22, 16879), (23, 16882), (25, 16918), (26, 16951),

Gene: StrawberryJamm_28 Start: 15689, Stop: 16423, Start Num: 3

Candidate Starts for StrawberryJamm_28:

(2, 15680), (Start: 3 @15689 has 40 MA's), (4, 15749), (9, 15941), (15, 16103), (16, 16130), (19, 16151), (21, 16172), (22, 16199), (23, 16202), (25, 16238), (26, 16271), (29, 16298),

Gene: Teehee_27 Start: 16624, Stop: 17358, Start Num: 3

Candidate Starts for Teehee_27:

(2, 16615), (Start: 3 @16624 has 40 MA's), (4, 16684), (5, 16777), (9, 16876), (15, 17038), (19, 17086), (21, 17107), (26, 17206),

Gene: Tempo_25 Start: 14894, Stop: 15631, Start Num: 3

Candidate Starts for Tempo_25:

(2, 14885), (Start: 3 @14894 has 40 MA's), (7, 15065), (11, 15221), (17, 15344), (19, 15353), (20, 15371), (25, 15443), (27, 15497), (33, 15590),

Gene: Tissue_26 Start: 16180, Stop: 16914, Start Num: 3

Candidate Starts for Tissue_26:

(2, 16171), (Start: 3 @16180 has 40 MA's), (4, 16240), (9, 16432), (15, 16594), (16, 16621), (19, 16642), (20, 16660), (21, 16663), (22, 16690), (23, 16693), (25, 16729), (26, 16762), (29, 16789),

Gene: Viceroy_25 Start: 15389, Stop: 16123, Start Num: 3

Candidate Starts for Viceroy_25:

(2, 15380), (Start: 3 @15389 has 40 MA's), (4, 15449), (5, 15542), (9, 15641), (15, 15803), (19, 15851), (21, 15872), (26, 15971),

Gene: Wayne3_27 Start: 16354, Stop: 17088, Start Num: 3

Candidate Starts for Wayne3_27:

(2, 16345), (Start: 3 @16354 has 40 MA's), (4, 16414), (5, 16507), (9, 16606), (15, 16768), (19, 16816), (21, 16837), (26, 16936),

Gene: Wheelie_25 Start: 15705, Stop: 16439, Start Num: 3

Candidate Starts for Wheelie_25:

(2, 15696), (Start: 3 @15705 has 40 MA's), (4, 15765), (5, 15858), (9, 15957), (15, 16119), (19, 16167), (21, 16188), (26, 16287),

Gene: Wilca_25 Start: 14837, Stop: 15583, Start Num: 3

Candidate Starts for Wilca_25:

(2, 14828), (Start: 3 @14837 has 40 MA's), (11, 15164), (17, 15287), (19, 15296), (24, 15371), (25, 15386), (32, 15524), (33, 15533), (35, 15569),

Gene: Zagie_26 Start: 15893, Stop: 16627, Start Num: 3

Candidate Starts for Zagie_26:

(2, 15884), (Start: 3 @15893 has 40 MA's), (4, 15953), (5, 16046), (9, 16145), (15, 16307), (19, 16355), (21, 16376), (26, 16475), (29, 16502),

Gene: Zhafia_29 Start: 16216, Stop: 16950, Start Num: 3

Candidate Starts for Zhafia_29:

(2, 16207), (Start: 3 @16216 has 40 MA's), (4, 16276), (5, 16369), (9, 16468), (15, 16630), (19, 16678), (21, 16699), (26, 16798),