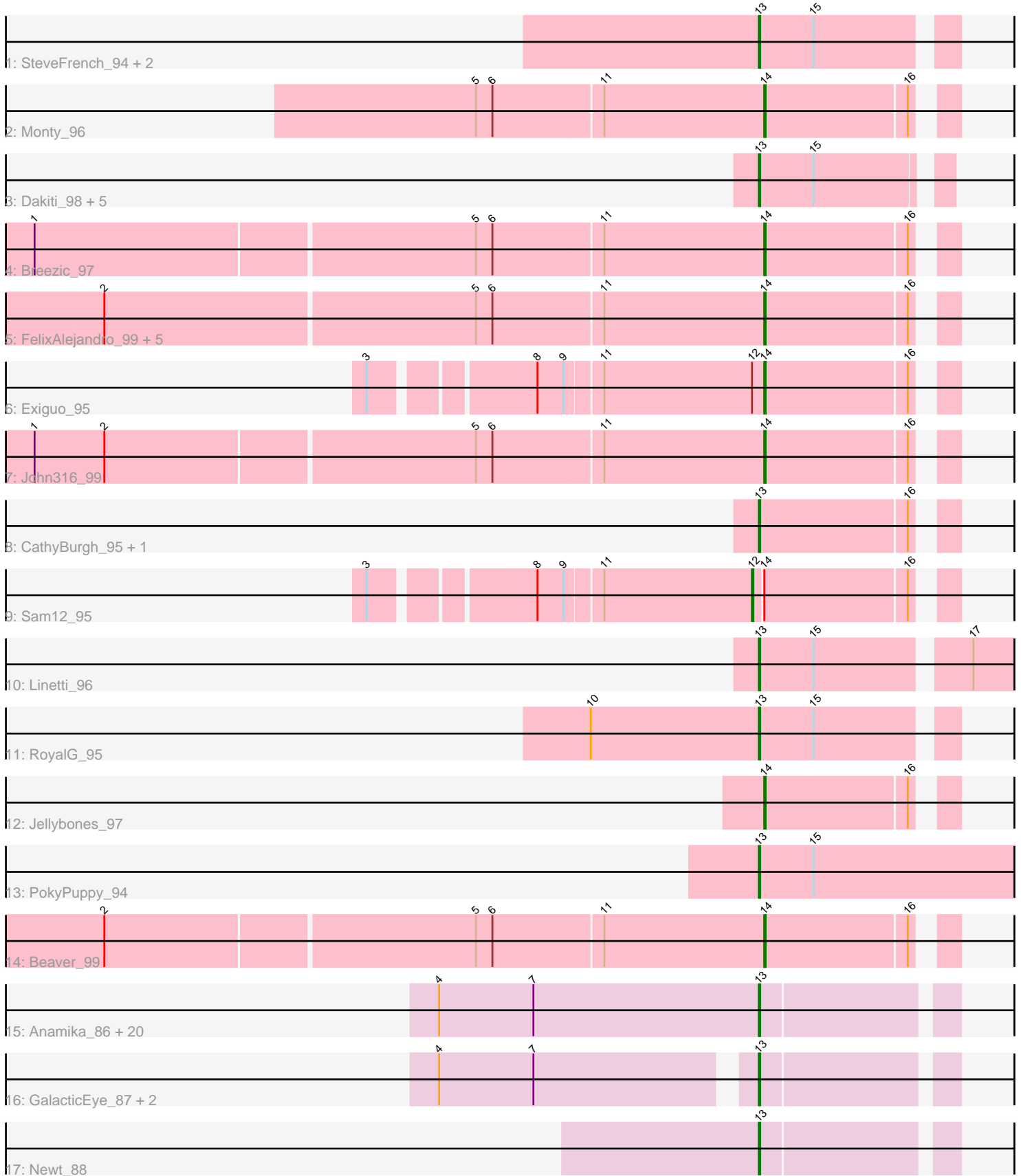


Pham 216239



Note: Tracks are now grouped by subcluster and scaled. Switching in subcluster is indicated by changes in track color. Track scale is now set by default to display the region 30 bp upstream of start 1 to 30 bp downstream of the last possible start. If this default region is judged to be packed too tightly with annotated starts, the track will be further scaled to only show that region of the ORF with annotated starts. This action will be indicated by adding "Zoomed" to the title. For starts, yellow indicates the location of called starts comprised solely of Glimmer/GeneMark auto-annotations, green indicates the location of called starts with at least 1 manual gene annotation.

Pham 216239 Report

This analysis was run 02/22/25 on database version 588.

Pham number 216239 has 52 members, 2 are drafts.

Phages represented in each track:

- Track 1 : SteveFrench_94, Eggsie_93, Diabla_100
- Track 2 : Monty_96
- Track 3 : Dakiti_98, BenoitCattle_98, BigShaq_97, Chelms_96, PierreThree_96, GourdThymes_96
- Track 4 : Breezic_97
- Track 5 : FelixAlejandro_99, BirksAndSocks_99, Msay19_100, Boneham_98, Poland_100, Butterball_97
- Track 6 : Exiguo_95
- Track 7 : John316_99
- Track 8 : CathyBurgh_95, Lizzo_96
- Track 9 : Sam12_95
- Track 10 : Linetti_96
- Track 11 : RoyalG_95
- Track 12 : Jellybones_97
- Track 13 : PokyPuppy_94
- Track 14 : Beaver_99
- Track 15 : Anamika_86, Neoevie_86, MrWormie_87, Jormungandr_86, Minos_88, Lidong_87, Nimi13_86, Harambe_86, Bianmat_87, Charianelly_87, Woes_86, Shelley_87, Hail2Pitt_85, Hello_86, Berries_87, Teal_86, Jams_87, Lahirium_87, Guillaume_86, Luker_88, Kaseim_86
- Track 16 : GalacticEye_87, Sticker17_87, Damp_87
- Track 17 : Newt_88

Summary of Final Annotations (See graph section above for start numbers):

The start number called the most often in the published annotations is 13, it was called in 37 of the 50 non-draft genes in the pham.

Genes that call this "Most Annotated" start:

- Anamika_86, BenoitCattle_98, Berries_87, Bianmat_87, BigShaq_97, CathyBurgh_95, Charianelly_87, Chelms_96, Dakiti_98, Damp_87, Diabla_100, Eggsie_93, GalacticEye_87, GourdThymes_96, Guillaume_86, Hail2Pitt_85, Harambe_86, Hello_86, Jams_87, Jormungandr_86, Kaseim_86, Lahirium_87, Lidong_87, Linetti_96, Lizzo_96, Luker_88, Minos_88, MrWormie_87, Neoevie_86,

Newt_88, Nimi13_86, PierreThree_96, PokyPuppy_94, RoyalG_95, Shelley_87, SteveFrench_94, Sticker17_87, Teal_86, Woes_86,

Genes that have the "Most Annotated" start but do not call it:

-

Genes that do not have the "Most Annotated" start:

• Beaver_99, BirksAndSocks_99, Boneham_98, Breezic_97, Butterball_97, Exiguo_95, FelixAlejandro_99, Jellybones_97, John316_99, Monty_96, Msay19_100, Poland_100, Sam12_95,

Summary by start number:

Start 12:

- Found in 2 of 52 (3.8%) of genes in pham
- Manual Annotations of this start: 1 of 50
- Called 50.0% of time when present
- Phage (with cluster) where this start called: Sam12_95 (CS2),

Start 13:

- Found in 39 of 52 (75.0%) of genes in pham
- Manual Annotations of this start: 37 of 50
- Called 100.0% of time when present
- Phage (with cluster) where this start called: Anamika_86 (CS3), BenoitCattle_98 (CS2), Berries_87 (CS3), Bianmat_87 (CS3), BigShaq_97 (CS2), CathyBurgh_95 (CS2), Charianelly_87 (CS3), Chelms_96 (CS2), Dakiti_98 (CS2), Damp_87 (CS3), Diabla_100 (CS2), Eggsie_93 (CS2), GalacticEye_87 (CS3), GourdThymes_96 (CS2), Guillaume_86 (CS3), Hail2Pitt_85 (CS3), Harambe_86 (CS3), Hello_86 (CS3), Jams_87 (CS3), Jormungandr_86 (CS3), Kaseim_86 (CS3), Lahirium_87 (CS3), Lidong_87 (CS3), Linetti_96 (CS2), Lizzo_96 (CS2), Luker_88 (CS3), Minos_88 (CS3), MrWormie_87 (CS3), Neoevie_86 (CS3), Newt_88 (CS3), Nimi13_86 (CS3), PierreThree_96 (CS2), PokyPuppy_94 (CS2), RoyalG_95 (CS2), Shelley_87 (CS3), SteveFrench_94 (CS2), Sticker17_87 (CS3), Teal_86 (CS3), Woes_86 (CS3),

Start 14:

- Found in 13 of 52 (25.0%) of genes in pham
- Manual Annotations of this start: 12 of 50
- Called 92.3% of time when present
- Phage (with cluster) where this start called: Beaver_99 (CS2), BirksAndSocks_99 (CS2), Boneham_98 (CS2), Breezic_97 (CS2), Butterball_97 (CS2), Exiguo_95 (CS2), FelixAlejandro_99 (CS2), Jellybones_97 (CS2), John316_99 (CS2), Monty_96 (CS2), Msay19_100 (CS2), Poland_100 (CS2),

Summary by clusters:

There are 2 clusters represented in this pham: CS3, CS2,

Info for manual annotations of cluster CS2:

- Start number 12 was manually annotated 1 time for cluster CS2.
- Start number 13 was manually annotated 13 times for cluster CS2.
- Start number 14 was manually annotated 12 times for cluster CS2.

Info for manual annotations of cluster CS3:

- Start number 13 was manually annotated 24 times for cluster CS3.

Gene Information:

Gene: Anamika_86 Start: 69030, Stop: 68899, Start Num: 13

Candidate Starts for Anamika_86:

(4, 69264), (7, 69195), (Start: 13 @69030 has 37 MA's),

Gene: Beaver_99 Start: 72089, Stop: 71967, Start Num: 14

Candidate Starts for Beaver_99:

(2, 72560), (5, 72296), (6, 72284), (11, 72206), (Start: 14 @72089 has 12 MA's), (16, 71987),

Gene: BenoitCattle_98 Start: 71490, Stop: 71365, Start Num: 13

Candidate Starts for BenoitCattle_98:

(Start: 13 @71490 has 37 MA's), (15, 71451),

Gene: Berries_87 Start: 69002, Stop: 68871, Start Num: 13

Candidate Starts for Berries_87:

(4, 69236), (7, 69167), (Start: 13 @69002 has 37 MA's),

Gene: Bianmat_87 Start: 69042, Stop: 68911, Start Num: 13

Candidate Starts for Bianmat_87:

(4, 69276), (7, 69207), (Start: 13 @69042 has 37 MA's),

Gene: BigShaq_97 Start: 71089, Stop: 70964, Start Num: 13

Candidate Starts for BigShaq_97:

(Start: 13 @71089 has 37 MA's), (15, 71050),

Gene: BirksAndSocks_99 Start: 71703, Stop: 71581, Start Num: 14

Candidate Starts for BirksAndSocks_99:

(2, 72177), (5, 71913), (6, 71901), (11, 71820), (Start: 14 @71703 has 12 MA's), (16, 71601),

Gene: Boneham_98 Start: 71628, Stop: 71506, Start Num: 14

Candidate Starts for Boneham_98:

(2, 72102), (5, 71838), (6, 71826), (11, 71745), (Start: 14 @71628 has 12 MA's), (16, 71526),

Gene: Breezic_97 Start: 70637, Stop: 70515, Start Num: 14

Candidate Starts for Breezic_97:

(1, 71159), (5, 70844), (6, 70832), (11, 70754), (Start: 14 @70637 has 12 MA's), (16, 70535),

Gene: Butterball_97 Start: 71633, Stop: 71511, Start Num: 14

Candidate Starts for Butterball_97:

(2, 72107), (5, 71843), (6, 71831), (11, 71750), (Start: 14 @71633 has 12 MA's), (16, 71531),

Gene: CathyBurgh_95 Start: 70670, Stop: 70545, Start Num: 13

Candidate Starts for CathyBurgh_95:

(Start: 13 @70670 has 37 MA's), (16, 70565),

Gene: Charianelly_87 Start: 68752, Stop: 68621, Start Num: 13

Candidate Starts for Charianelly_87:

(4, 68986), (7, 68917), (Start: 13 @68752 has 37 MA's),

Gene: Chelms_96 Start: 71227, Stop: 71102, Start Num: 13
Candidate Starts for Chelms_96:
(Start: 13 @71227 has 37 MA's), (15, 71188),

Gene: Dakiti_98 Start: 72170, Stop: 72045, Start Num: 13
Candidate Starts for Dakiti_98:
(Start: 13 @72170 has 37 MA's), (15, 72131),

Gene: Damp_87 Start: 67916, Stop: 67785, Start Num: 13
Candidate Starts for Damp_87:
(4, 68132), (7, 68063), (Start: 13 @67916 has 37 MA's),

Gene: Diabla_100 Start: 71646, Stop: 71515, Start Num: 13
Candidate Starts for Diabla_100:
(Start: 13 @71646 has 37 MA's), (15, 71607),

Gene: Eggsie_93 Start: 69202, Stop: 69071, Start Num: 13
Candidate Starts for Eggsie_93:
(Start: 13 @69202 has 37 MA's), (15, 69163),

Gene: Exiguo_95 Start: 70100, Stop: 69978, Start Num: 14
Candidate Starts for Exiguo_95:
(3, 70361), (8, 70256), (9, 70238), (11, 70214), (Start: 12 @70106 has 1 MA's), (Start: 14 @70100 has 12 MA's), (16, 69998),

Gene: FelixAlejandro_99 Start: 72146, Stop: 72024, Start Num: 14
Candidate Starts for FelixAlejandro_99:
(2, 72620), (5, 72353), (6, 72341), (11, 72263), (Start: 14 @72146 has 12 MA's), (16, 72044),

Gene: GalacticEye_87 Start: 68710, Stop: 68579, Start Num: 13
Candidate Starts for GalacticEye_87:
(4, 68926), (7, 68857), (Start: 13 @68710 has 37 MA's),

Gene: GourdThymes_96 Start: 70697, Stop: 70572, Start Num: 13
Candidate Starts for GourdThymes_96:
(Start: 13 @70697 has 37 MA's), (15, 70658),

Gene: Guillaume_86 Start: 68763, Stop: 68632, Start Num: 13
Candidate Starts for Guillaume_86:
(4, 68997), (7, 68928), (Start: 13 @68763 has 37 MA's),

Gene: Hail2Pitt_85 Start: 69236, Stop: 69105, Start Num: 13
Candidate Starts for Hail2Pitt_85:
(4, 69470), (7, 69401), (Start: 13 @69236 has 37 MA's),

Gene: Harambe_86 Start: 69030, Stop: 68899, Start Num: 13
Candidate Starts for Harambe_86:
(4, 69264), (7, 69195), (Start: 13 @69030 has 37 MA's),

Gene: Hello_86 Start: 68992, Stop: 68861, Start Num: 13
Candidate Starts for Hello_86:
(4, 69226), (7, 69157), (Start: 13 @68992 has 37 MA's),

Gene: Jams_87 Start: 68040, Stop: 67909, Start Num: 13

Candidate Starts for Jams_87:

(4, 68274), (7, 68205), (Start: 13 @68040 has 37 MA's),

Gene: Jellybones_97 Start: 71834, Stop: 71712, Start Num: 14

Candidate Starts for Jellybones_97:

(Start: 14 @71834 has 12 MA's), (16, 71732),

Gene: John316_99 Start: 71808, Stop: 71686, Start Num: 14

Candidate Starts for John316_99:

(1, 72330), (2, 72279), (5, 72015), (6, 72003), (11, 71925), (Start: 14 @71808 has 12 MA's), (16, 71706),

Gene: Jormungandr_86 Start: 68745, Stop: 68614, Start Num: 13

Candidate Starts for Jormungandr_86:

(4, 68979), (7, 68910), (Start: 13 @68745 has 37 MA's),

Gene: Kaseim_86 Start: 68187, Stop: 68056, Start Num: 13

Candidate Starts for Kaseim_86:

(4, 68421), (7, 68352), (Start: 13 @68187 has 37 MA's),

Gene: Lahirium_87 Start: 69781, Stop: 69650, Start Num: 13

Candidate Starts for Lahirium_87:

(4, 70015), (7, 69946), (Start: 13 @69781 has 37 MA's),

Gene: Lidong_87 Start: 69002, Stop: 68871, Start Num: 13

Candidate Starts for Lidong_87:

(4, 69236), (7, 69167), (Start: 13 @69002 has 37 MA's),

Gene: Linetti_96 Start: 72253, Stop: 72071, Start Num: 13

Candidate Starts for Linetti_96:

(Start: 13 @72253 has 37 MA's), (15, 72214), (17, 72112),

Gene: Lizzo_96 Start: 70670, Stop: 70545, Start Num: 13

Candidate Starts for Lizzo_96:

(Start: 13 @70670 has 37 MA's), (16, 70565),

Gene: Luker_88 Start: 69055, Stop: 68924, Start Num: 13

Candidate Starts for Luker_88:

(4, 69289), (7, 69220), (Start: 13 @69055 has 37 MA's),

Gene: Minos_88 Start: 68729, Stop: 68598, Start Num: 13

Candidate Starts for Minos_88:

(4, 68963), (7, 68894), (Start: 13 @68729 has 37 MA's),

Gene: Monty_96 Start: 70369, Stop: 70247, Start Num: 14

Candidate Starts for Monty_96:

(5, 70576), (6, 70564), (11, 70486), (Start: 14 @70369 has 12 MA's), (16, 70267),

Gene: MrWormie_87 Start: 67743, Stop: 67612, Start Num: 13

Candidate Starts for MrWormie_87:

(4, 67977), (7, 67908), (Start: 13 @67743 has 37 MA's),

Gene: Msay19_100 Start: 72429, Stop: 72307, Start Num: 14
Candidate Starts for Msay19_100:
(2, 72903), (5, 72639), (6, 72627), (11, 72546), (Start: 14 @72429 has 12 MA's), (16, 72327),

Gene: Neoevie_86 Start: 69003, Stop: 68872, Start Num: 13
Candidate Starts for Neoevie_86:
(4, 69237), (7, 69168), (Start: 13 @69003 has 37 MA's),

Gene: Newt_88 Start: 69072, Stop: 68941, Start Num: 13
Candidate Starts for Newt_88:
(Start: 13 @69072 has 37 MA's),

Gene: Nimi13_86 Start: 68753, Stop: 68622, Start Num: 13
Candidate Starts for Nimi13_86:
(4, 68987), (7, 68918), (Start: 13 @68753 has 37 MA's),

Gene: PierreThree_96 Start: 71801, Stop: 71676, Start Num: 13
Candidate Starts for PierreThree_96:
(Start: 13 @71801 has 37 MA's), (15, 71762),

Gene: PokyPuppy_94 Start: 71153, Stop: 70956, Start Num: 13
Candidate Starts for PokyPuppy_94:
(Start: 13 @71153 has 37 MA's), (15, 71114),

Gene: Poland_100 Start: 72411, Stop: 72289, Start Num: 14
Candidate Starts for Poland_100:
(2, 72885), (5, 72621), (6, 72609), (11, 72528), (Start: 14 @72411 has 12 MA's), (16, 72309),

Gene: RoyalG_95 Start: 70393, Stop: 70262, Start Num: 13
Candidate Starts for RoyalG_95:
(10, 70516), (Start: 13 @70393 has 37 MA's), (15, 70354),

Gene: Sam12_95 Start: 70103, Stop: 69975, Start Num: 12
Candidate Starts for Sam12_95:
(3, 70358), (8, 70253), (9, 70235), (11, 70211), (Start: 12 @70103 has 1 MA's), (Start: 14 @70097 has 12 MA's), (16, 69995),

Gene: Shelley_87 Start: 68229, Stop: 68098, Start Num: 13
Candidate Starts for Shelley_87:
(4, 68463), (7, 68394), (Start: 13 @68229 has 37 MA's),

Gene: SteveFrench_94 Start: 70633, Stop: 70502, Start Num: 13
Candidate Starts for SteveFrench_94:
(Start: 13 @70633 has 37 MA's), (15, 70594),

Gene: Sticker17_87 Start: 68717, Stop: 68586, Start Num: 13
Candidate Starts for Sticker17_87:
(4, 68933), (7, 68864), (Start: 13 @68717 has 37 MA's),

Gene: Teal_86 Start: 69208, Stop: 69077, Start Num: 13
Candidate Starts for Teal_86:
(4, 69442), (7, 69373), (Start: 13 @69208 has 37 MA's),

Gene: Woes_86 Start: 69259, Stop: 69128, Start Num: 13
Candidate Starts for Woes_86:
(4, 69493), (7, 69424), (Start: 13 @69259 has 37 MA's),