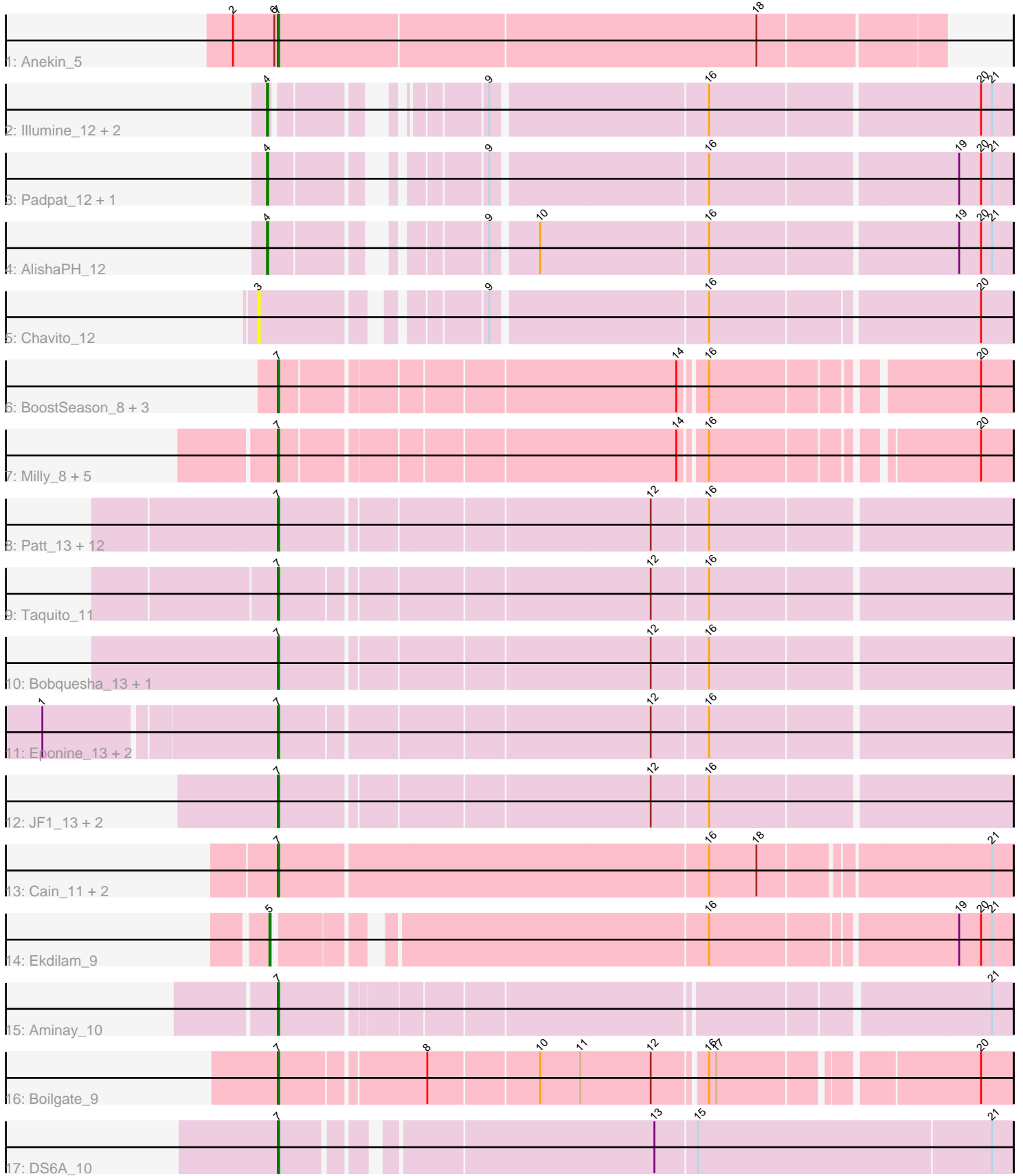


Pham 216269



Note: Tracks are now grouped by subcluster and scaled. Switching in subcluster is indicated by changes in track color. Track scale is now set by default to display the region 30 bp upstream of start 1 to 30 bp downstream of the last possible start. If this default region is judged to be packed too tightly with annotated starts, the track will be further scaled to only show that region of the ORF with annotated starts. This action will be indicated by adding "Zoomed" to the title. For starts, yellow indicates the location of called starts comprised solely of Glimmer/GeneMark auto-annotations, green indicates the location of called starts with at least 1 manual gene annotation.

## Pham 216269 Report

This analysis was run 02/22/25 on database version 588.

Pham number 216269 has 47 members, 5 are drafts.

Phages represented in each track:

- Track 1 : Anekin\_5
- Track 2 : Illumine\_12, Dole\_12, Devera\_12
- Track 3 : Padpat\_12, Emerson\_12
- Track 4 : AlishaPH\_12
- Track 5 : Chavito\_12
- Track 6 : BoostSeason\_8, Doughnut\_8, Mufasa\_8, ZoeJ\_8
- Track 7 : Milly\_8, Strobilo\_8, DismalFunk\_8, Findley\_8, DismalStressor\_8, Marcoliusprime\_8
- Track 8 : Patt\_13, Mitti\_13, Lebo14\_13, Fionnbharth\_13, Wintermute\_13, Chancellor\_13, Kraw\_13, MissDaisy\_13, Slarp\_13, OmniCritical\_13, Malthus\_13, Cheetobro\_13, SamScheppers\_11
- Track 9 : Taquito\_11
- Track 10 : Bobquesha\_13, Reptar3000\_13
- Track 11 : Eponine\_13, Juliette\_13, Ruthiejr\_12
- Track 12 : JF1\_13, Y2\_13, Y10\_13
- Track 13 : Cain\_11, Bryler\_11, Sunflower1121\_10
- Track 14 : Ekdilam\_9
- Track 15 : Aminay\_10
- Track 16 : Boilgate\_9
- Track 17 : DS6A\_10

### ***Summary of Final Annotations (See graph section above for start numbers):***

The start number called the most often in the published annotations is 7, it was called in 35 of the 42 non-draft genes in the pham.

Genes that call this "Most Annotated" start:

- Aminay\_10, Anekin\_5, Bobquesha\_13, Boilgate\_9, BoostSeason\_8, Bryler\_11, Cain\_11, Chancellor\_13, Cheetobro\_13, DS6A\_10, DismalFunk\_8, DismalStressor\_8, Doughnut\_8, Eponine\_13, Findley\_8, Fionnbharth\_13, JF1\_13, Juliette\_13, Kraw\_13, Lebo14\_13, Malthus\_13, Marcoliusprime\_8, Milly\_8, MissDaisy\_13, Mitti\_13, Mufasa\_8, OmniCritical\_13, Patt\_13, Reptar3000\_13, Ruthiejr\_12, SamScheppers\_11, Slarp\_13, Strobilo\_8, Sunflower1121\_10, Taquito\_11, Wintermute\_13, Y10\_13, Y2\_13, ZoeJ\_8,

Genes that have the "Most Annotated" start but do not call it:

- 

Genes that do not have the "Most Annotated" start:

- AlishaPH\_12, Chavito\_12, Devera\_12, Dole\_12, Ekdilam\_9, Emerson\_12, Illumine\_12, Padpat\_12,

### Summary by start number:

Start 3:

- Found in 1 of 47 ( 2.1% ) of genes in pham
- No Manual Annotations of this start.
- Called 100.0% of time when present
- Phage (with cluster) where this start called: Chavito\_12 (K1),

Start 4:

- Found in 6 of 47 ( 12.8% ) of genes in pham
- Manual Annotations of this start: 6 of 42
- Called 100.0% of time when present
- Phage (with cluster) where this start called: AlishaPH\_12 (K1), Devera\_12 (K1), Dole\_12 (K1), Emerson\_12 (K1), Illumine\_12 (K1), Padpat\_12 (K1),

Start 5:

- Found in 1 of 47 ( 2.1% ) of genes in pham
- Manual Annotations of this start: 1 of 42
- Called 100.0% of time when present
- Phage (with cluster) where this start called: Ekdilam\_9 (K6),

Start 7:

- Found in 39 of 47 ( 83.0% ) of genes in pham
- Manual Annotations of this start: 35 of 42
- Called 100.0% of time when present
- Phage (with cluster) where this start called: Aminay\_10 (K7), Anekin\_5 (AY), Bobquesha\_13 (K4), Boilgate\_9 (K8), BoostSeason\_8 (K2), Bryler\_11 (K6), Cain\_11 (K6), Chancellor\_13 (K4), Cheetobro\_13 (K4), DS6A\_10 (singleton), DismalFunk\_8 (K2), DismalStressor\_8 (K2), Doughnut\_8 (K2), Eponine\_13 (K4), Findley\_8 (K2), Fionnbharth\_13 (K4), JF1\_13 (K4), Juliette\_13 (K4), Kraw\_13 (K4), Lebo14\_13 (K4), Malthus\_13 (K4), Marcoliusprime\_8 (K2), Milly\_8 (K2), MissDaisy\_13 (K4), Mitti\_13 (K4), Mufasa\_8 (K2), OmniCritical\_13 (K4), Patt\_13 (K4), Reptar3000\_13 (K4), Ruthiejr\_12 (K4), SamScheppers\_11 (K4), Slarp\_13 (K4), Strobilo\_8 (K2), Sunflower1121\_10 (K6), Taquito\_11 (K4), Wintermute\_13 (K4), Y10\_13 (K4), Y2\_13 (K4), ZoeJ\_8 (K2),

### Summary by clusters:

There are 8 clusters represented in this pham: singleton, K2, K1, K7, K6, K4, AY, K8,

Info for manual annotations of cluster AY:

- Start number 7 was manually annotated 1 time for cluster AY.

Info for manual annotations of cluster K1:

- Start number 4 was manually annotated 6 times for cluster K1.

Info for manual annotations of cluster K2:

- Start number 7 was manually annotated 9 times for cluster K2.

Info for manual annotations of cluster K4:

- Start number 7 was manually annotated 19 times for cluster K4.

Info for manual annotations of cluster K6:

- Start number 5 was manually annotated 1 time for cluster K6.
- Start number 7 was manually annotated 3 times for cluster K6.

Info for manual annotations of cluster K7:

- Start number 7 was manually annotated 1 time for cluster K7.

Info for manual annotations of cluster K8:

- Start number 7 was manually annotated 1 time for cluster K8.

### **Gene Information:**

Gene: AlishaPH\_12 Start: 7315, Stop: 7857, Start Num: 4

Candidate Starts for AlishaPH\_12:

(Start: 4 @7315 has 6 MA's), (9, 7450), (10, 7483), (16, 7618), (19, 7813), (20, 7831), (21, 7840),

Gene: Aminay\_10 Start: 7229, Stop: 7786, Start Num: 7

Candidate Starts for Aminay\_10:

(Start: 7 @7229 has 35 MA's), (21, 7769),

Gene: Anekin\_5 Start: 5066, Stop: 5599, Start Num: 7

Candidate Starts for Anekin\_5:

(2, 5030), (6, 5063), (Start: 7 @5066 has 35 MA's), (18, 5453),

Gene: Bobquesha\_13 Start: 8298, Stop: 8870, Start Num: 7

Candidate Starts for Bobquesha\_13:

(Start: 7 @8298 has 35 MA's), (12, 8586), (16, 8631),

Gene: Boilgate\_9 Start: 7303, Stop: 7857, Start Num: 7

Candidate Starts for Boilgate\_9:

(Start: 7 @7303 has 35 MA's), (8, 7414), (10, 7501), (11, 7534), (12, 7591), (16, 7630), (17, 7636), (20, 7831),

Gene: BoostSeason\_8 Start: 5333, Stop: 5878, Start Num: 7

Candidate Starts for BoostSeason\_8:

(Start: 7 @5333 has 35 MA's), (14, 5636), (16, 5654), (20, 5852),

Gene: Bryler\_11 Start: 6246, Stop: 6824, Start Num: 7

Candidate Starts for Bryler\_11:

(Start: 7 @6246 has 35 MA's), (16, 6591), (18, 6630), (21, 6807),

Gene: Cain\_11 Start: 6234, Stop: 6812, Start Num: 7

Candidate Starts for Cain\_11:

(Start: 7 @6234 has 35 MA's), (16, 6579), (18, 6618), (21, 6795),

Gene: Chancellor\_13 Start: 8544, Stop: 9116, Start Num: 7

Candidate Starts for Chancellor\_13:

(Start: 7 @8544 has 35 MA's), (12, 8832), (16, 8877),

Gene: Chavito\_12 Start: 6370, Stop: 6924, Start Num: 3

Candidate Starts for Chavito\_12:

(3, 6370), (9, 6520), (16, 6688), (20, 6898),

Gene: Cheetobro\_13 Start: 8544, Stop: 9116, Start Num: 7

Candidate Starts for Cheetobro\_13:

(Start: 7 @8544 has 35 MA's), (12, 8832), (16, 8877),

Gene: DS6A\_10 Start: 7559, Stop: 8122, Start Num: 7

Candidate Starts for DS6A\_10:

(Start: 7 @7559 has 35 MA's), (13, 7835), (15, 7868), (21, 8105),

Gene: Devera\_12 Start: 7321, Stop: 7854, Start Num: 4

Candidate Starts for Devera\_12:

(Start: 4 @7321 has 6 MA's), (9, 7447), (16, 7615), (20, 7828), (21, 7837),

Gene: DismalFunk\_8 Start: 5349, Stop: 5891, Start Num: 7

Candidate Starts for DismalFunk\_8:

(Start: 7 @5349 has 35 MA's), (14, 5652), (16, 5670), (20, 5865),

Gene: DismalStressor\_8 Start: 5349, Stop: 5891, Start Num: 7

Candidate Starts for DismalStressor\_8:

(Start: 7 @5349 has 35 MA's), (14, 5652), (16, 5670), (20, 5865),

Gene: Dole\_12 Start: 7321, Stop: 7854, Start Num: 4

Candidate Starts for Dole\_12:

(Start: 4 @7321 has 6 MA's), (9, 7447), (16, 7615), (20, 7828), (21, 7837),

Gene: Doughnut\_8 Start: 5333, Stop: 5878, Start Num: 7

Candidate Starts for Doughnut\_8:

(Start: 7 @5333 has 35 MA's), (14, 5636), (16, 5654), (20, 5852),

Gene: Ekdilam\_9 Start: 6928, Stop: 7482, Start Num: 5

Candidate Starts for Ekdilam\_9:

(Start: 5 @6928 has 1 MA's), (16, 7249), (19, 7438), (20, 7456), (21, 7465),

Gene: Emerson\_12 Start: 7316, Stop: 7858, Start Num: 4

Candidate Starts for Emerson\_12:

(Start: 4 @7316 has 6 MA's), (9, 7451), (16, 7619), (19, 7814), (20, 7832), (21, 7841),

Gene: Eponine\_13 Start: 8420, Stop: 8992, Start Num: 7

Candidate Starts for Eponine\_13:

(1, 8240), (Start: 7 @8420 has 35 MA's), (12, 8708), (16, 8753),

Gene: Findley\_8 Start: 5349, Stop: 5891, Start Num: 7

Candidate Starts for Findley\_8:

(Start: 7 @5349 has 35 MA's), (14, 5652), (16, 5670), (20, 5865),

Gene: Fionnbharth\_13 Start: 8534, Stop: 9106, Start Num: 7

Candidate Starts for Fionnbharth\_13:

(Start: 7 @8534 has 35 MA's), (12, 8822), (16, 8867),

Gene: Illumine\_12 Start: 7321, Stop: 7854, Start Num: 4

Candidate Starts for Illumine\_12:

(Start: 4 @7321 has 6 MA's), (9, 7447), (16, 7615), (20, 7828), (21, 7837),

Gene: JF1\_13 Start: 8533, Stop: 9105, Start Num: 7

Candidate Starts for JF1\_13:

(Start: 7 @8533 has 35 MA's), (12, 8821), (16, 8866),

Gene: Juliette\_13 Start: 8420, Stop: 8992, Start Num: 7

Candidate Starts for Juliette\_13:

(1, 8240), (Start: 7 @8420 has 35 MA's), (12, 8708), (16, 8753),

Gene: Kraw\_13 Start: 8453, Stop: 9025, Start Num: 7

Candidate Starts for Kraw\_13:

(Start: 7 @8453 has 35 MA's), (12, 8741), (16, 8786),

Gene: Lebo14\_13 Start: 8547, Stop: 9119, Start Num: 7

Candidate Starts for Lebo14\_13:

(Start: 7 @8547 has 35 MA's), (12, 8835), (16, 8880),

Gene: Malthus\_13 Start: 8453, Stop: 9025, Start Num: 7

Candidate Starts for Malthus\_13:

(Start: 7 @8453 has 35 MA's), (12, 8741), (16, 8786),

Gene: Marcoliusprime\_8 Start: 5349, Stop: 5891, Start Num: 7

Candidate Starts for Marcoliusprime\_8:

(Start: 7 @5349 has 35 MA's), (14, 5652), (16, 5670), (20, 5865),

Gene: Milly\_8 Start: 5349, Stop: 5891, Start Num: 7

Candidate Starts for Milly\_8:

(Start: 7 @5349 has 35 MA's), (14, 5652), (16, 5670), (20, 5865),

Gene: MissDaisy\_13 Start: 8319, Stop: 8891, Start Num: 7

Candidate Starts for MissDaisy\_13:

(Start: 7 @8319 has 35 MA's), (12, 8607), (16, 8652),

Gene: Mitti\_13 Start: 8457, Stop: 9029, Start Num: 7

Candidate Starts for Mitti\_13:

(Start: 7 @8457 has 35 MA's), (12, 8745), (16, 8790),

Gene: Mufasa\_8 Start: 5333, Stop: 5878, Start Num: 7

Candidate Starts for Mufasa\_8:

(Start: 7 @5333 has 35 MA's), (14, 5636), (16, 5654), (20, 5852),

Gene: OmniCritical\_13 Start: 8444, Stop: 9016, Start Num: 7

Candidate Starts for OmniCritical\_13:

(Start: 7 @8444 has 35 MA's), (12, 8732), (16, 8777),

Gene: Padpat\_12 Start: 7316, Stop: 7858, Start Num: 4

Candidate Starts for Padpat\_12:

(Start: 4 @7316 has 6 MA's), (9, 7451), (16, 7619), (19, 7814), (20, 7832), (21, 7841),

Gene: Patt\_13 Start: 8295, Stop: 8867, Start Num: 7

Candidate Starts for Patt\_13:

(Start: 7 @8295 has 35 MA's), (12, 8583), (16, 8628),

Gene: Reptar3000\_13 Start: 8297, Stop: 8869, Start Num: 7

Candidate Starts for Reptar3000\_13:

(Start: 7 @8297 has 35 MA's), (12, 8585), (16, 8630),

Gene: Ruthiejr\_12 Start: 8151, Stop: 8723, Start Num: 7

Candidate Starts for Ruthiejr\_12:

(1, 7971), (Start: 7 @8151 has 35 MA's), (12, 8439), (16, 8484),

Gene: SamScheppers\_11 Start: 8060, Stop: 8632, Start Num: 7

Candidate Starts for SamScheppers\_11:

(Start: 7 @8060 has 35 MA's), (12, 8348), (16, 8393),

Gene: Slarp\_13 Start: 8544, Stop: 9116, Start Num: 7

Candidate Starts for Slarp\_13:

(Start: 7 @8544 has 35 MA's), (12, 8832), (16, 8877),

Gene: Strobilo\_8 Start: 5349, Stop: 5891, Start Num: 7

Candidate Starts for Strobilo\_8:

(Start: 7 @5349 has 35 MA's), (14, 5652), (16, 5670), (20, 5865),

Gene: Sunflower1121\_10 Start: 6147, Stop: 6722, Start Num: 7

Candidate Starts for Sunflower1121\_10:

(Start: 7 @6147 has 35 MA's), (16, 6489), (18, 6528), (21, 6705),

Gene: Taquito\_11 Start: 8133, Stop: 8702, Start Num: 7

Candidate Starts for Taquito\_11:

(Start: 7 @8133 has 35 MA's), (12, 8418), (16, 8463),

Gene: Wintermute\_13 Start: 8533, Stop: 9105, Start Num: 7

Candidate Starts for Wintermute\_13:

(Start: 7 @8533 has 35 MA's), (12, 8821), (16, 8866),

Gene: Y10\_13 Start: 8533, Stop: 9105, Start Num: 7

Candidate Starts for Y10\_13:

(Start: 7 @8533 has 35 MA's), (12, 8821), (16, 8866),

Gene: Y2\_13 Start: 8533, Stop: 9105, Start Num: 7

Candidate Starts for Y2\_13:

(Start: 7 @8533 has 35 MA's), (12, 8821), (16, 8866),

Gene: ZoeJ\_8 Start: 5306, Stop: 5842, Start Num: 7

Candidate Starts for ZoeJ\_8:

(Start: 7 @5306 has 35 MA's), (14, 5603), (16, 5621), (20, 5816),