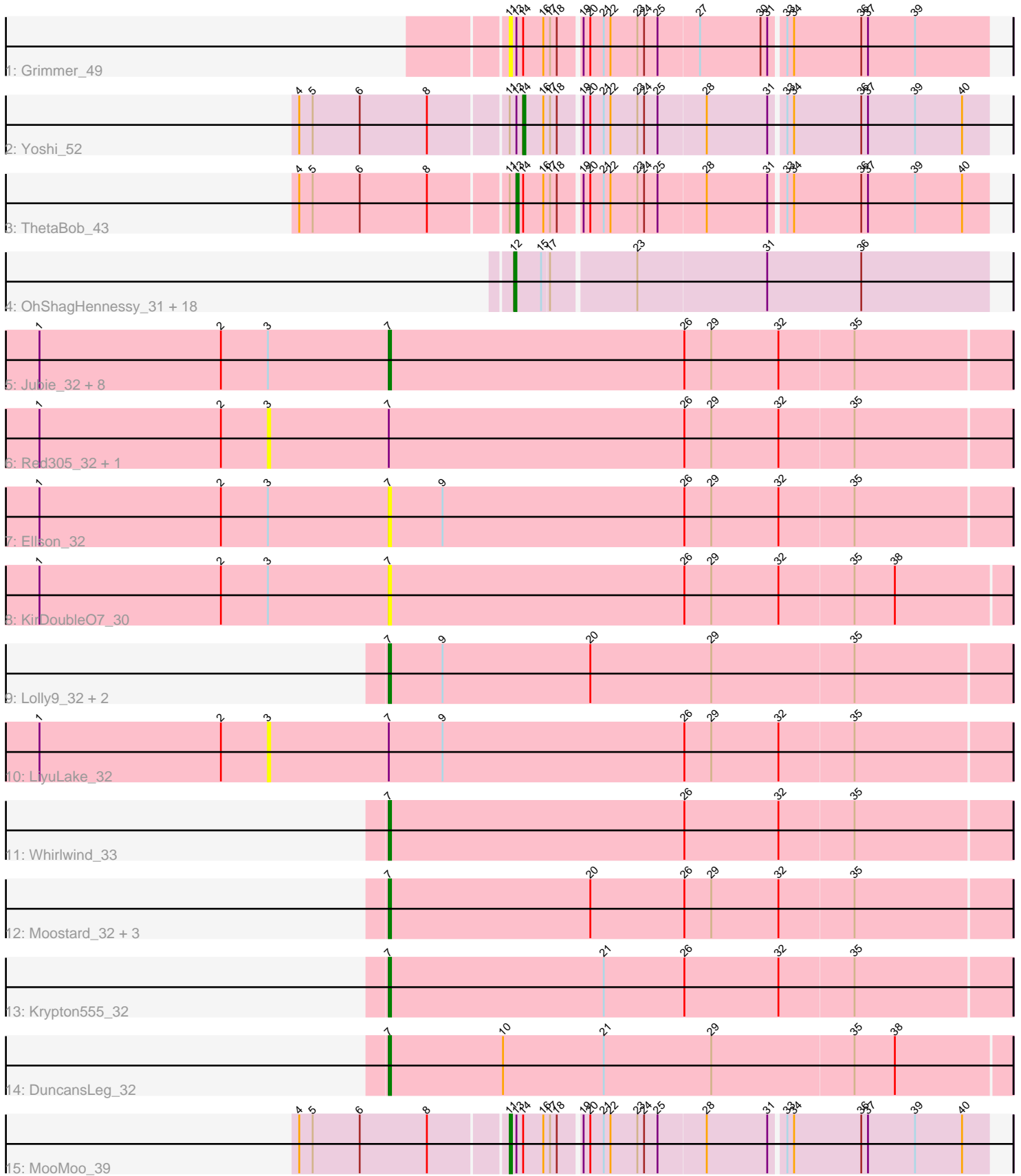


Pham 216271



Note: Tracks are now grouped by subcluster and scaled. Switching in subcluster is indicated by changes in track color. Track scale is now set by default to display the region 30 bp upstream of start 1 to 30 bp downstream of the last possible start. If this default region is judged to be packed too tightly with annotated starts, the track will be further scaled to only show that region of the ORF with annotated starts. This action will be indicated by adding "Zoomed" to the title. For starts, yellow indicates the location of called starts comprised solely of Glimmer/GeneMark auto-annotations, green indicates the location of called starts with at least 1 manual gene annotation.

Pham 216271 Report

This analysis was run 02/22/25 on database version 588.

Pham number 216271 has 47 members, 9 are drafts.

Phages represented in each track:

- Track 1 : Grimmer_49
- Track 2 : Yoshi_52
- Track 3 : ThetaBob_43
- Track 4 : OhShagHennessy_31, Enceladus_31, Calm_31, Acquire49_31, MAckerman_31, JoeDirt_31, Silverleaf_31, Appletree2_31, UPIE_31, LeBron_31, Halena_31, Rose5_31, Wamburgrxpress_31, Wyatt2_31, Pochiewood_31, CicholasNage_31, Zaria_31, Tyson_31, AvadaKedavra_31
- Track 5 : Jubie_32, MsGreen_32, Kingsolomon_32, Nicholas_32, Jobypre_32, BourbonZero_31, Clautastrophe_32, Lumos_32, Snenia_32
- Track 6 : Red305_32, TriFive_32
- Track 7 : Ellson_32
- Track 8 : KirDoubleO7_30
- Track 9 : Lolly9_32, MiniLon_32, MiniMac_32
- Track 10 : LiyuLake_32
- Track 11 : Whirlwind_33
- Track 12 : Moostard_32, Samty_32, Bellis_32, Finnry_32
- Track 13 : Krypton555_32
- Track 14 : DuncansLeg_32
- Track 15 : MooMoo_39

Summary of Final Annotations (See graph section above for start numbers):

The start number called the most often in the published annotations is 12, it was called in 18 of the 38 non-draft genes in the pham.

Genes that call this "Most Annotated" start:

- Acquire49_31, Appletree2_31, AvadaKedavra_31, Calm_31, CicholasNage_31, Enceladus_31, Halena_31, JoeDirt_31, LeBron_31, MAckerman_31, OhShagHennessy_31, Pochiewood_31, Rose5_31, Silverleaf_31, Tyson_31, UPIE_31, Wamburgrxpress_31, Wyatt2_31, Zaria_31,

Genes that have the "Most Annotated" start but do not call it:

-

Genes that do not have the "Most Annotated" start:

- Bellis_32, BourbonZero_31, Clautastrophe_32, DuncansLeg_32, Ellson_32, Finnry_32, Grimmer_49, Jobypre_32, Jubie_32, Kingsolomon_32, KirDoubleO7_30, Krypton555_32, LiyuLake_32, Lolly9_32, Lumos_32, MiniLon_32, MiniMac_32, MooMoo_39, Moostard_32, MsGreen_32, Nicholas_32, Red305_32, Samty_32, Snenia_32, ThetaBob_43, TriFive_32, Whirlwind_33, Yoshi_52,

Summary by start number:

Start 3:

- Found in 14 of 47 (29.8%) of genes in pham
- No Manual Annotations of this start.
- Called 21.4% of time when present
- Phage (with cluster) where this start called: LiyuLake_32 (L3), Red305_32 (L3), TriFive_32 (L3),

Start 7:

- Found in 24 of 47 (51.1%) of genes in pham
- Manual Annotations of this start: 17 of 38
- Called 87.5% of time when present
- Phage (with cluster) where this start called: Bellis_32 (L3), BourbonZero_31 (L3), Clautastrophe_32 (L3), DuncansLeg_32 (L3), Ellson_32 (L3), Finnry_32 (L3), Jobypre_32 (L3), Jubie_32 (L3), Kingsolomon_32 (L3), KirDoubleO7_30 (L3), Krypton555_32 (L3), Lolly9_32 (L3), Lumos_32 (L3), MiniLon_32 (L3), MiniMac_32 (L3), Moostard_32 (L3), MsGreen_32 (L3), Nicholas_32 (L3), Samty_32 (L3), Snenia_32 (L3), Whirlwind_33 (L3),

Start 11:

- Found in 4 of 47 (8.5%) of genes in pham
- Manual Annotations of this start: 1 of 38
- Called 50.0% of time when present
- Phage (with cluster) where this start called: Grimmer_49 (F1), MooMoo_39 (singleton),

Start 12:

- Found in 19 of 47 (40.4%) of genes in pham
- Manual Annotations of this start: 18 of 38
- Called 100.0% of time when present
- Phage (with cluster) where this start called: Acquire49_31 (L1), Appletree2_31 (L1), AvadaKedavra_31 (L1), Calm_31 (L1), CicholasNage_31 (L1), Enceladus_31 (L1), Halena_31 (L1), JoeDirt_31 (L1), LeBron_31 (L1), MAckerman_31 (L1), OhShagHennessy_31 (L1), Poochiewood_31 (L1), Rose5_31 (L1), Silverleaf_31 (L1), Tyson_31 (L1), UPIE_31 (L1), Wamburgxpress_31 (L1), Wyatt2_31 (L1), Zaria_31 (L1),

Start 13:

- Found in 4 of 47 (8.5%) of genes in pham
- Manual Annotations of this start: 1 of 38
- Called 25.0% of time when present
- Phage (with cluster) where this start called: ThetaBob_43 (F4),

Start 14:

- Found in 4 of 47 (8.5%) of genes in pham

- Manual Annotations of this start: 1 of 38
- Called 25.0% of time when present
- Phage (with cluster) where this start called: Yoshi_52 (F2),

Summary by clusters:

There are 6 clusters represented in this pham: F1, F2, F4, singleton, L3, L1,

Info for manual annotations of cluster F2:

- Start number 14 was manually annotated 1 time for cluster F2.

Info for manual annotations of cluster F4:

- Start number 13 was manually annotated 1 time for cluster F4.

Info for manual annotations of cluster L1:

- Start number 12 was manually annotated 18 times for cluster L1.

Info for manual annotations of cluster L3:

- Start number 7 was manually annotated 17 times for cluster L3.

Gene Information:

Gene: Acquire49_31 Start: 28234, Stop: 28028, Start Num: 12

Candidate Starts for Acquire49_31:

(Start: 12 @28234 has 18 MA's), (15, 28222), (17, 28219), (23, 28183), (31, 28126), (36, 28084),

Gene: Appletree2_31 Start: 28177, Stop: 27971, Start Num: 12

Candidate Starts for Appletree2_31:

(Start: 12 @28177 has 18 MA's), (15, 28165), (17, 28162), (23, 28126), (31, 28069), (36, 28027),

Gene: AvadaKedavra_31 Start: 28244, Stop: 28038, Start Num: 12

Candidate Starts for AvadaKedavra_31:

(Start: 12 @28244 has 18 MA's), (15, 28232), (17, 28229), (23, 28193), (31, 28136), (36, 28094),

Gene: Bellis_32 Start: 29638, Stop: 29363, Start Num: 7

Candidate Starts for Bellis_32:

(Start: 7 @29638 has 17 MA's), (20, 29548), (26, 29506), (29, 29494), (32, 29464), (35, 29431),

Gene: BourbonZero_31 Start: 29588, Stop: 29313, Start Num: 7

Candidate Starts for BourbonZero_31:

(1, 29744), (2, 29663), (3, 29642), (Start: 7 @29588 has 17 MA's), (26, 29456), (29, 29444), (32, 29414), (35, 29381),

Gene: Calm_31 Start: 28249, Stop: 28043, Start Num: 12

Candidate Starts for Calm_31:

(Start: 12 @28249 has 18 MA's), (15, 28237), (17, 28234), (23, 28198), (31, 28141), (36, 28099),

Gene: CicholasNage_31 Start: 28236, Stop: 28030, Start Num: 12

Candidate Starts for CicholasNage_31:

(Start: 12 @28236 has 18 MA's), (15, 28224), (17, 28221), (23, 28185), (31, 28128), (36, 28086),

Gene: Clautastrophe_32 Start: 29636, Stop: 29361, Start Num: 7
Candidate Starts for Clautastrophe_32:
(1, 29792), (2, 29711), (3, 29690), (Start: 7 @29636 has 17 MA's), (26, 29504), (29, 29492), (32, 29462), (35, 29429),

Gene: DuncansLeg_32 Start: 29624, Stop: 29349, Start Num: 7
Candidate Starts for DuncansLeg_32:
(Start: 7 @29624 has 17 MA's), (10, 29573), (21, 29528), (29, 29480), (35, 29417), (38, 29399),

Gene: Ellson_32 Start: 29600, Stop: 29325, Start Num: 7
Candidate Starts for Ellson_32:
(1, 29756), (2, 29675), (3, 29654), (Start: 7 @29600 has 17 MA's), (9, 29576), (26, 29468), (29, 29456), (32, 29426), (35, 29393),

Gene: Enceladus_31 Start: 28218, Stop: 28012, Start Num: 12
Candidate Starts for Enceladus_31:
(Start: 12 @28218 has 18 MA's), (15, 28206), (17, 28203), (23, 28167), (31, 28110), (36, 28068),

Gene: Finnry_32 Start: 29640, Stop: 29365, Start Num: 7
Candidate Starts for Finnry_32:
(Start: 7 @29640 has 17 MA's), (20, 29550), (26, 29508), (29, 29496), (32, 29466), (35, 29433),

Gene: Grimmer_49 Start: 33187, Stop: 32981, Start Num: 11
Candidate Starts for Grimmer_49:
(Start: 11 @33187 has 1 MA's), (Start: 13 @33184 has 1 MA's), (Start: 14 @33181 has 1 MA's), (16, 33172), (17, 33169), (18, 33166), (19, 33157), (20, 33154), (21, 33148), (22, 33145), (23, 33133), (24, 33130), (25, 33124), (27, 33106), (30, 33079), (31, 33076), (33, 33070), (34, 33067), (36, 33037), (37, 33034), (39, 33013),

Gene: Halena_31 Start: 28245, Stop: 28039, Start Num: 12
Candidate Starts for Halena_31:
(Start: 12 @28245 has 18 MA's), (15, 28233), (17, 28230), (23, 28194), (31, 28137), (36, 28095),

Gene: Jobypre_32 Start: 29636, Stop: 29361, Start Num: 7
Candidate Starts for Jobypre_32:
(1, 29792), (2, 29711), (3, 29690), (Start: 7 @29636 has 17 MA's), (26, 29504), (29, 29492), (32, 29462), (35, 29429),

Gene: JoeDirt_31 Start: 28216, Stop: 28010, Start Num: 12
Candidate Starts for JoeDirt_31:
(Start: 12 @28216 has 18 MA's), (15, 28204), (17, 28201), (23, 28165), (31, 28108), (36, 28066),

Gene: Jubie_32 Start: 29637, Stop: 29362, Start Num: 7
Candidate Starts for Jubie_32:
(1, 29793), (2, 29712), (3, 29691), (Start: 7 @29637 has 17 MA's), (26, 29505), (29, 29493), (32, 29463), (35, 29430),

Gene: Kingsolomon_32 Start: 29636, Stop: 29361, Start Num: 7
Candidate Starts for Kingsolomon_32:
(1, 29792), (2, 29711), (3, 29690), (Start: 7 @29636 has 17 MA's), (26, 29504), (29, 29492), (32, 29462), (35, 29429),

Gene: KirDoubleO7_30 Start: 29633, Stop: 29358, Start Num: 7

Candidate Starts for KirDoubleO7_30:

(1, 29789), (2, 29708), (3, 29687), (Start: 7 @29633 has 17 MA's), (26, 29501), (29, 29489), (32, 29459), (35, 29426), (38, 29408),

Gene: Krypton555_32 Start: 29543, Stop: 29268, Start Num: 7

Candidate Starts for Krypton555_32:

(Start: 7 @29543 has 17 MA's), (21, 29447), (26, 29411), (32, 29369), (35, 29336),

Gene: LeBron_31 Start: 28260, Stop: 28054, Start Num: 12

Candidate Starts for LeBron_31:

(Start: 12 @28260 has 18 MA's), (15, 28248), (17, 28245), (23, 28209), (31, 28152), (36, 28110),

Gene: LiyuLake_32 Start: 29645, Stop: 29316, Start Num: 3

Candidate Starts for LiyuLake_32:

(1, 29747), (2, 29666), (3, 29645), (Start: 7 @29591 has 17 MA's), (9, 29567), (26, 29459), (29, 29447), (32, 29417), (35, 29384),

Gene: Lolly9_32 Start: 29407, Stop: 29132, Start Num: 7

Candidate Starts for Lolly9_32:

(Start: 7 @29407 has 17 MA's), (9, 29383), (20, 29317), (29, 29263), (35, 29200),

Gene: Lumos_32 Start: 29633, Stop: 29358, Start Num: 7

Candidate Starts for Lumos_32:

(1, 29789), (2, 29708), (3, 29687), (Start: 7 @29633 has 17 MA's), (26, 29501), (29, 29489), (32, 29459), (35, 29426),

Gene: MAckerman_31 Start: 28234, Stop: 28028, Start Num: 12

Candidate Starts for MAckerman_31:

(Start: 12 @28234 has 18 MA's), (15, 28222), (17, 28219), (23, 28183), (31, 28126), (36, 28084),

Gene: MiniLon_32 Start: 29408, Stop: 29133, Start Num: 7

Candidate Starts for MiniLon_32:

(Start: 7 @29408 has 17 MA's), (9, 29384), (20, 29318), (29, 29264), (35, 29201),

Gene: MiniMac_32 Start: 29408, Stop: 29133, Start Num: 7

Candidate Starts for MiniMac_32:

(Start: 7 @29408 has 17 MA's), (9, 29384), (20, 29318), (29, 29264), (35, 29201),

Gene: MooMoo_39 Start: 31044, Stop: 30838, Start Num: 11

Candidate Starts for MooMoo_39:

(4, 31134), (5, 31128), (6, 31107), (8, 31077), (Start: 11 @31044 has 1 MA's), (Start: 13 @31041 has 1 MA's), (Start: 14 @31038 has 1 MA's), (16, 31029), (17, 31026), (18, 31023), (19, 31014), (20, 31011), (21, 31005), (22, 31002), (23, 30990), (24, 30987), (25, 30981), (28, 30960), (31, 30933), (33, 30927), (34, 30924), (36, 30894), (37, 30891), (39, 30870), (40, 30849),

Gene: Moostard_32 Start: 29639, Stop: 29364, Start Num: 7

Candidate Starts for Moostard_32:

(Start: 7 @29639 has 17 MA's), (20, 29549), (26, 29507), (29, 29495), (32, 29465), (35, 29432),

Gene: MsGreen_32 Start: 29636, Stop: 29361, Start Num: 7

Candidate Starts for MsGreen_32:

(1, 29792), (2, 29711), (3, 29690), (Start: 7 @29636 has 17 MA's), (26, 29504), (29, 29492), (32, 29462), (35, 29429),

Gene: Nicholas_32 Start: 29636, Stop: 29361, Start Num: 7

Candidate Starts for Nicholas_32:

(1, 29792), (2, 29711), (3, 29690), (Start: 7 @29636 has 17 MA's), (26, 29504), (29, 29492), (32, 29462), (35, 29429),

Gene: OhShagHennessy_31 Start: 28199, Stop: 27993, Start Num: 12

Candidate Starts for OhShagHennessy_31:

(Start: 12 @28199 has 18 MA's), (15, 28187), (17, 28184), (23, 28148), (31, 28091), (36, 28049),

Gene: Poochiewood_31 Start: 28235, Stop: 28029, Start Num: 12

Candidate Starts for Poochiewood_31:

(Start: 12 @28235 has 18 MA's), (15, 28223), (17, 28220), (23, 28184), (31, 28127), (36, 28085),

Gene: Red305_32 Start: 29690, Stop: 29361, Start Num: 3

Candidate Starts for Red305_32:

(1, 29792), (2, 29711), (3, 29690), (Start: 7 @29636 has 17 MA's), (26, 29504), (29, 29492), (32, 29462), (35, 29429),

Gene: Rose5_31 Start: 28234, Stop: 28028, Start Num: 12

Candidate Starts for Rose5_31:

(Start: 12 @28234 has 18 MA's), (15, 28222), (17, 28219), (23, 28183), (31, 28126), (36, 28084),

Gene: Samty_32 Start: 29638, Stop: 29363, Start Num: 7

Candidate Starts for Samty_32:

(Start: 7 @29638 has 17 MA's), (20, 29548), (26, 29506), (29, 29494), (32, 29464), (35, 29431),

Gene: Silverleaf_31 Start: 28234, Stop: 28028, Start Num: 12

Candidate Starts for Silverleaf_31:

(Start: 12 @28234 has 18 MA's), (15, 28222), (17, 28219), (23, 28183), (31, 28126), (36, 28084),

Gene: Snenia_32 Start: 29637, Stop: 29362, Start Num: 7

Candidate Starts for Snenia_32:

(1, 29793), (2, 29712), (3, 29691), (Start: 7 @29637 has 17 MA's), (26, 29505), (29, 29493), (32, 29463), (35, 29430),

Gene: ThetaBob_43 Start: 31404, Stop: 31201, Start Num: 13

Candidate Starts for ThetaBob_43:

(4, 31497), (5, 31491), (6, 31470), (8, 31440), (Start: 11 @31407 has 1 MA's), (Start: 13 @31404 has 1 MA's), (Start: 14 @31401 has 1 MA's), (16, 31392), (17, 31389), (18, 31386), (19, 31377), (20, 31374), (21, 31368), (22, 31365), (23, 31353), (24, 31350), (25, 31344), (28, 31323), (31, 31296), (33, 31290), (34, 31287), (36, 31257), (37, 31254), (39, 31233), (40, 31212),

Gene: TriFive_32 Start: 29690, Stop: 29361, Start Num: 3

Candidate Starts for TriFive_32:

(1, 29792), (2, 29711), (3, 29690), (Start: 7 @29636 has 17 MA's), (26, 29504), (29, 29492), (32, 29462), (35, 29429),

Gene: Tyson_31 Start: 28234, Stop: 28028, Start Num: 12

Candidate Starts for Tyson_31:

(Start: 12 @28234 has 18 MA's), (15, 28222), (17, 28219), (23, 28183), (31, 28126), (36, 28084),

Gene: UPIE_31 Start: 28232, Stop: 28026, Start Num: 12

Candidate Starts for UPIE_31:

(Start: 12 @28232 has 18 MA's), (15, 28220), (17, 28217), (23, 28181), (31, 28124), (36, 28082),

Gene: Wamburgexpress_31 Start: 28247, Stop: 28041, Start Num: 12

Candidate Starts for Wamburgexpress_31:

(Start: 12 @28247 has 18 MA's), (15, 28235), (17, 28232), (23, 28196), (31, 28139), (36, 28097),

Gene: Whirlwind_33 Start: 29385, Stop: 29110, Start Num: 7

Candidate Starts for Whirlwind_33:

(Start: 7 @29385 has 17 MA's), (26, 29253), (32, 29211), (35, 29178),

Gene: Wyatt2_31 Start: 28234, Stop: 28028, Start Num: 12

Candidate Starts for Wyatt2_31:

(Start: 12 @28234 has 18 MA's), (15, 28222), (17, 28219), (23, 28183), (31, 28126), (36, 28084),

Gene: Yoshi_52 Start: 32293, Stop: 32093, Start Num: 14

Candidate Starts for Yoshi_52:

(4, 32389), (5, 32383), (6, 32362), (8, 32332), (Start: 11 @32299 has 1 MA's), (Start: 13 @32296 has 1 MA's), (Start: 14 @32293 has 1 MA's), (16, 32284), (17, 32281), (18, 32278), (19, 32269), (20, 32266), (21, 32260), (22, 32257), (23, 32245), (24, 32242), (25, 32236), (28, 32215), (31, 32188), (33, 32182), (34, 32179), (36, 32149), (37, 32146), (39, 32125), (40, 32104),

Gene: Zaria_31 Start: 28249, Stop: 28043, Start Num: 12

Candidate Starts for Zaria_31:

(Start: 12 @28249 has 18 MA's), (15, 28237), (17, 28234), (23, 28198), (31, 28141), (36, 28099),