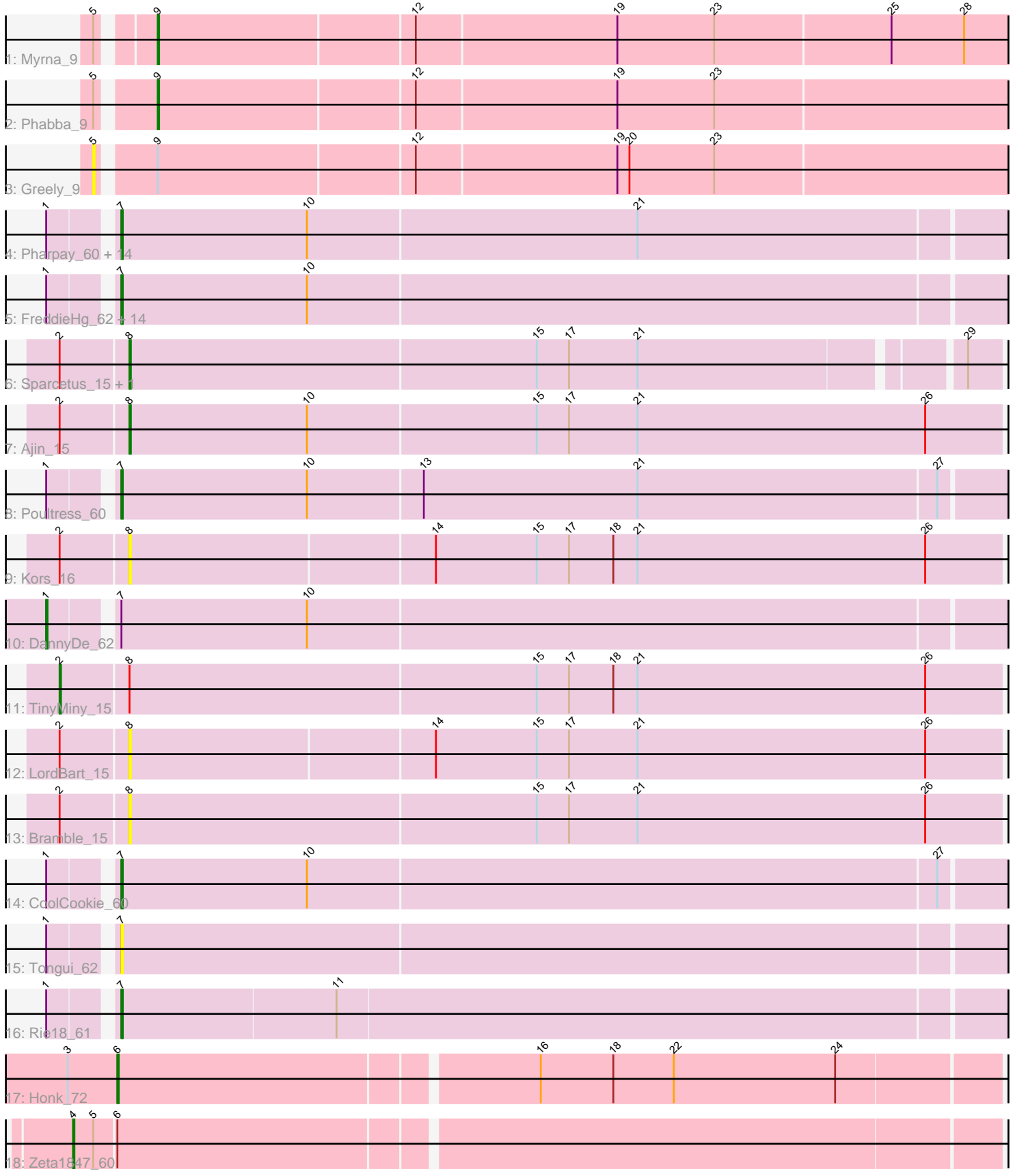


Pham 216281



Note: Tracks are now grouped by subcluster and scaled. Switching in subcluster is indicated by changes in track color. Track scale is now set by default to display the region 30 bp upstream of start 1 to 30 bp downstream of the last possible start. If this default region is judged to be packed too tightly with annotated starts, the track will be further scaled to only show that region of the ORF with annotated starts. This action will be indicated by adding "Zoomed" to the title. For starts, yellow indicates the location of called starts comprised solely of Glimmer/GeneMark auto-annotations, green indicates the location of called starts with at least 1 manual gene annotation.

Pham 216281 Report

This analysis was run 02/22/25 on database version 588.

Pham number 216281 has 47 members, 9 are drafts.

Phages represented in each track:

- Track 1 : Myrna_9
- Track 2 : Phabba_9
- Track 3 : Greely_9
- Track 4 : Pharpay_60, Krampus_61, Potty_60, Anakin_61, Rachella_61, Haunter_61, NarutoRun_61, Cybele_61, PhunaPhoke_61, Kate_61, AnnaSerena_61, OverHedge_60, Gilda_61, Artiphact_60, Neptune_61
- Track 5 : FreddieHg_62, Annapurna_63, Aesir_60, JDawG_60, SilentWarrior_62, Chivey_62, Crestdrop_61, Dauntless_60, JingleBells_61, Tedro_61, Snakehole_62, Erudite_60, Hiddenleaf_62, MortySmith_59, Hager_62
- Track 6 : Sparcetus_15, RikSengupta_15
- Track 7 : Ajin_15
- Track 8 : Poultress_60
- Track 9 : Kors_16
- Track 10 : DannyDe_62
- Track 11 : TinyMiny_15
- Track 12 : LordBart_15
- Track 13 : Bramble_15
- Track 14 : CoolCookie_60
- Track 15 : Tongui_62
- Track 16 : Rie18_61
- Track 17 : Honk_72
- Track 18 : Zeta1847_60

Summary of Final Annotations (See graph section above for start numbers):

The start number called the most often in the published annotations is 7, it was called in 29 of the 38 non-draft genes in the pham.

Genes that call this "Most Annotated" start:

- Aesir_60, Anakin_61, AnnaSerena_61, Annapurna_63, Artiphact_60, Chivey_62, CoolCookie_60, Crestdrop_61, Cybele_61, Dauntless_60, Erudite_60, FreddieHg_62, Gilda_61, Hager_62, Haunter_61, Hiddenleaf_62, JDawG_60, JingleBells_61, Kate_61, Krampus_61, MortySmith_59, NarutoRun_61, Neptune_61, OverHedge_60, Pharpay_60, PhunaPhoke_61, Potty_60, Poultress_60, Rachella_61, Rie18_61,

SilentWarrior_62, Snakehole_62, Tedro_61, Tongui_62,

Genes that have the "Most Annotated" start but do not call it:

- DannyDe_62,

Genes that do not have the "Most Annotated" start:

- Ajin_15, Bramble_15, Greely_9, Honk_72, Kors_16, LordBart_15, Myrna_9, Phabba_9, RikSengupta_15, Sparcetus_15, TinyMiny_15, Zeta1847_60,

Summary by start number:

Start 1:

- Found in 35 of 47 (74.5%) of genes in pham
- Manual Annotations of this start: 1 of 38
- Called 2.9% of time when present
- Phage (with cluster) where this start called: DannyDe_62 (EF),

Start 2:

- Found in 7 of 47 (14.9%) of genes in pham
- Manual Annotations of this start: 1 of 38
- Called 14.3% of time when present
- Phage (with cluster) where this start called: TinyMiny_15 (EF),

Start 4:

- Found in 1 of 47 (2.1%) of genes in pham
- Manual Annotations of this start: 1 of 38
- Called 100.0% of time when present
- Phage (with cluster) where this start called: Zeta1847_60 (EH),

Start 5:

- Found in 4 of 47 (8.5%) of genes in pham
- No Manual Annotations of this start.
- Called 25.0% of time when present
- Phage (with cluster) where this start called: Greely_9 (C2),

Start 6:

- Found in 2 of 47 (4.3%) of genes in pham
- Manual Annotations of this start: 1 of 38
- Called 50.0% of time when present
- Phage (with cluster) where this start called: Honk_72 (EH),

Start 7:

- Found in 35 of 47 (74.5%) of genes in pham
- Manual Annotations of this start: 29 of 38
- Called 97.1% of time when present
- Phage (with cluster) where this start called: Aesir_60 (EF), Anakin_61 (EF), AnnaSerena_61 (EF), Annapurna_63 (EF), Artiphact_60 (EF), Chivey_62 (EF), CoolCookie_60 (EF), Crestdrop_61 (EF), Cybele_61 (EF), Dauntless_60 (EF), Erudite_60 (EF), FreddieHg_62 (EF), Gilda_61 (EF), Hager_62 (EF), Haunter_61 (EF), Hiddenleaf_62 (EF), JDawG_60 (EF), JingleBells_61 (EF), Kate_61 (EF), Krampus_61 (EF), MortySmith_59 (EF), NarutoRun_61 (EF), Neptune_61 (EF), OverHedge_60 (EF), Pharpay_60 (EF), PhunaPhoke_61 (EF), Potty_60 (EF), Poultruss_60 (EF), Rachella_61 (EF), Rie18_61 (EF), SilentWarrior_62 (EF),

Snakehole_62 (EF), Tedro_61 (EF), Tongui_62 (EF),

Start 8:

- Found in 7 of 47 (14.9%) of genes in pham
- Manual Annotations of this start: 3 of 38
- Called 85.7% of time when present
- Phage (with cluster) where this start called: Ajin_15 (EF), Bramble_15 (EF), Kors_16 (EF), LordBart_15 (EF), RikSengupta_15 (EF), Sparcetus_15 (EF),

Start 9:

- Found in 3 of 47 (6.4%) of genes in pham
- Manual Annotations of this start: 2 of 38
- Called 66.7% of time when present
- Phage (with cluster) where this start called: Myrna_9 (C2), Phabba_9 (C2),

Summary by clusters:

There are 3 clusters represented in this pham: C2, EF, EH,

Info for manual annotations of cluster C2:

- Start number 9 was manually annotated 2 times for cluster C2.

Info for manual annotations of cluster EF:

- Start number 1 was manually annotated 1 time for cluster EF.
- Start number 2 was manually annotated 1 time for cluster EF.
- Start number 7 was manually annotated 29 times for cluster EF.
- Start number 8 was manually annotated 3 times for cluster EF.

Info for manual annotations of cluster EH:

- Start number 4 was manually annotated 1 time for cluster EH.
- Start number 6 was manually annotated 1 time for cluster EH.

Gene Information:

Gene: Aesir_60 Start: 46858, Stop: 47505, Start Num: 7

Candidate Starts for Aesir_60:

(Start: 1 @46816 has 1 MA's), (Start: 7 @46858 has 29 MA's), (10, 46996),

Gene: Ajin_15 Start: 7272, Stop: 7913, Start Num: 8

Candidate Starts for Ajin_15:

(Start: 2 @7224 has 1 MA's), (Start: 8 @7272 has 3 MA's), (10, 7404), (15, 7572), (17, 7596), (21, 7647), (26, 7860),

Gene: Anakin_61 Start: 47166, Stop: 47813, Start Num: 7

Candidate Starts for Anakin_61:

(Start: 1 @47124 has 1 MA's), (Start: 7 @47166 has 29 MA's), (10, 47304), (21, 47547),

Gene: AnnaSerena_61 Start: 47200, Stop: 47847, Start Num: 7

Candidate Starts for AnnaSerena_61:

(Start: 1 @47158 has 1 MA's), (Start: 7 @47200 has 29 MA's), (10, 47338), (21, 47581),

Gene: Annapurna_63 Start: 46707, Stop: 47354, Start Num: 7
Candidate Starts for Annapurna_63:
(Start: 1 @46665 has 1 MA's), (Start: 7 @46707 has 29 MA's), (10, 46845),

Gene: Artiphact_60 Start: 47190, Stop: 47837, Start Num: 7
Candidate Starts for Artiphact_60:
(Start: 1 @47148 has 1 MA's), (Start: 7 @47190 has 29 MA's), (10, 47328), (21, 47571),

Gene: Bramble_15 Start: 7239, Stop: 7880, Start Num: 8
Candidate Starts for Bramble_15:
(Start: 2 @7191 has 1 MA's), (Start: 8 @7239 has 3 MA's), (15, 7539), (17, 7563), (21, 7614), (26, 7827),

Gene: Chivey_62 Start: 46661, Stop: 47308, Start Num: 7
Candidate Starts for Chivey_62:
(Start: 1 @46619 has 1 MA's), (Start: 7 @46661 has 29 MA's), (10, 46799),

Gene: CoolCookie_60 Start: 47242, Stop: 47889, Start Num: 7
Candidate Starts for CoolCookie_60:
(Start: 1 @47200 has 1 MA's), (Start: 7 @47242 has 29 MA's), (10, 47380), (27, 47842),

Gene: Crestdrop_61 Start: 46885, Stop: 47532, Start Num: 7
Candidate Starts for Crestdrop_61:
(Start: 1 @46843 has 1 MA's), (Start: 7 @46885 has 29 MA's), (10, 47023),

Gene: Cybele_61 Start: 47196, Stop: 47843, Start Num: 7
Candidate Starts for Cybele_61:
(Start: 1 @47154 has 1 MA's), (Start: 7 @47196 has 29 MA's), (10, 47334), (21, 47577),

Gene: DannyDe_62 Start: 46620, Stop: 47309, Start Num: 1
Candidate Starts for DannyDe_62:
(Start: 1 @46620 has 1 MA's), (Start: 7 @46662 has 29 MA's), (10, 46800),

Gene: Dauntless_60 Start: 46793, Stop: 47440, Start Num: 7
Candidate Starts for Dauntless_60:
(Start: 1 @46751 has 1 MA's), (Start: 7 @46793 has 29 MA's), (10, 46931),

Gene: Erudite_60 Start: 46793, Stop: 47440, Start Num: 7
Candidate Starts for Erudite_60:
(Start: 1 @46751 has 1 MA's), (Start: 7 @46793 has 29 MA's), (10, 46931),

Gene: FreddieHg_62 Start: 46678, Stop: 47325, Start Num: 7
Candidate Starts for FreddieHg_62:
(Start: 1 @46636 has 1 MA's), (Start: 7 @46678 has 29 MA's), (10, 46816),

Gene: Gilda_61 Start: 47188, Stop: 47835, Start Num: 7
Candidate Starts for Gilda_61:
(Start: 1 @47146 has 1 MA's), (Start: 7 @47188 has 29 MA's), (10, 47326), (21, 47569),

Gene: Greely_9 Start: 3736, Stop: 4431, Start Num: 5
Candidate Starts for Greely_9:
(5, 3736), (Start: 9 @3772 has 2 MA's), (12, 3958), (19, 4105), (20, 4114), (23, 4177),

Gene: Hager_62 Start: 46579, Stop: 47226, Start Num: 7
Candidate Starts for Hager_62:
(Start: 1 @46537 has 1 MA's), (Start: 7 @46579 has 29 MA's), (10, 46717),

Gene: Haunter_61 Start: 46430, Stop: 47077, Start Num: 7
Candidate Starts for Haunter_61:
(Start: 1 @46388 has 1 MA's), (Start: 7 @46430 has 29 MA's), (10, 46568), (21, 46811),

Gene: Hiddenleaf_62 Start: 46661, Stop: 47308, Start Num: 7
Candidate Starts for Hiddenleaf_62:
(Start: 1 @46619 has 1 MA's), (Start: 7 @46661 has 29 MA's), (10, 46799),

Gene: Honk_72 Start: 45240, Stop: 45872, Start Num: 6
Candidate Starts for Honk_72:
(3, 45204), (Start: 6 @45240 has 1 MA's), (16, 45540), (18, 45594), (22, 45639), (24, 45759),

Gene: JDawG_60 Start: 46853, Stop: 47500, Start Num: 7
Candidate Starts for JDawG_60:
(Start: 1 @46811 has 1 MA's), (Start: 7 @46853 has 29 MA's), (10, 46991),

Gene: JingleBells_61 Start: 46766, Stop: 47413, Start Num: 7
Candidate Starts for JingleBells_61:
(Start: 1 @46724 has 1 MA's), (Start: 7 @46766 has 29 MA's), (10, 46904),

Gene: Kate_61 Start: 47105, Stop: 47752, Start Num: 7
Candidate Starts for Kate_61:
(Start: 1 @47063 has 1 MA's), (Start: 7 @47105 has 29 MA's), (10, 47243), (21, 47486),

Gene: Kors_16 Start: 7305, Stop: 7943, Start Num: 8
Candidate Starts for Kors_16:
(Start: 2 @7257 has 1 MA's), (Start: 8 @7305 has 3 MA's), (14, 7527), (15, 7602), (17, 7626), (18, 7659), (21, 7677), (26, 7890),

Gene: Krampus_61 Start: 47201, Stop: 47848, Start Num: 7
Candidate Starts for Krampus_61:
(Start: 1 @47159 has 1 MA's), (Start: 7 @47201 has 29 MA's), (10, 47339), (21, 47582),

Gene: LordBart_15 Start: 7278, Stop: 7916, Start Num: 8
Candidate Starts for LordBart_15:
(Start: 2 @7230 has 1 MA's), (Start: 8 @7278 has 3 MA's), (14, 7500), (15, 7575), (17, 7599), (21, 7650), (26, 7863),

Gene: MortySmith_59 Start: 46267, Stop: 46914, Start Num: 7
Candidate Starts for MortySmith_59:
(Start: 1 @46225 has 1 MA's), (Start: 7 @46267 has 29 MA's), (10, 46405),

Gene: Myrna_9 Start: 3884, Stop: 4543, Start Num: 9
Candidate Starts for Myrna_9:
(5, 3851), (Start: 9 @3884 has 2 MA's), (12, 4070), (19, 4217), (23, 4289), (25, 4418), (28, 4472),

Gene: NarutoRun_61 Start: 47166, Stop: 47813, Start Num: 7
Candidate Starts for NarutoRun_61:
(Start: 1 @47124 has 1 MA's), (Start: 7 @47166 has 29 MA's), (10, 47304), (21, 47547),

Gene: Neptune_61 Start: 47196, Stop: 47843, Start Num: 7
Candidate Starts for Neptune_61:
(Start: 1 @47154 has 1 MA's), (Start: 7 @47196 has 29 MA's), (10, 47334), (21, 47577),

Gene: OverHedge_60 Start: 47062, Stop: 47709, Start Num: 7
Candidate Starts for OverHedge_60:
(Start: 1 @47020 has 1 MA's), (Start: 7 @47062 has 29 MA's), (10, 47200), (21, 47443),

Gene: Phabba_9 Start: 3508, Stop: 4167, Start Num: 9
Candidate Starts for Phabba_9:
(5, 3472), (Start: 9 @3508 has 2 MA's), (12, 3694), (19, 3841), (23, 3913),

Gene: Pharpay_60 Start: 47211, Stop: 47858, Start Num: 7
Candidate Starts for Pharpay_60:
(Start: 1 @47169 has 1 MA's), (Start: 7 @47211 has 29 MA's), (10, 47349), (21, 47592),

Gene: PhunaPhoke_61 Start: 47181, Stop: 47828, Start Num: 7
Candidate Starts for PhunaPhoke_61:
(Start: 1 @47139 has 1 MA's), (Start: 7 @47181 has 29 MA's), (10, 47319), (21, 47562),

Gene: Potty_60 Start: 47111, Stop: 47758, Start Num: 7
Candidate Starts for Potty_60:
(Start: 1 @47069 has 1 MA's), (Start: 7 @47111 has 29 MA's), (10, 47249), (21, 47492),

Gene: Poultruss_60 Start: 47408, Stop: 48055, Start Num: 7
Candidate Starts for Poultruss_60:
(Start: 1 @47366 has 1 MA's), (Start: 7 @47408 has 29 MA's), (10, 47546), (13, 47630), (21, 47789),
(27, 48008),

Gene: Rachella_61 Start: 47192, Stop: 47839, Start Num: 7
Candidate Starts for Rachella_61:
(Start: 1 @47150 has 1 MA's), (Start: 7 @47192 has 29 MA's), (10, 47330), (21, 47573),

Gene: Rie18_61 Start: 46994, Stop: 47638, Start Num: 7
Candidate Starts for Rie18_61:
(Start: 1 @46952 has 1 MA's), (Start: 7 @46994 has 29 MA's), (11, 47150),

Gene: RikSengupta_15 Start: 7375, Stop: 7995, Start Num: 8
Candidate Starts for RikSengupta_15:
(Start: 2 @7327 has 1 MA's), (Start: 8 @7375 has 3 MA's), (15, 7675), (17, 7699), (21, 7750), (29,
7972),

Gene: SilentWarrior_62 Start: 46627, Stop: 47274, Start Num: 7
Candidate Starts for SilentWarrior_62:
(Start: 1 @46585 has 1 MA's), (Start: 7 @46627 has 29 MA's), (10, 46765),

Gene: Snakehole_62 Start: 46608, Stop: 47255, Start Num: 7
Candidate Starts for Snakehole_62:
(Start: 1 @46566 has 1 MA's), (Start: 7 @46608 has 29 MA's), (10, 46746),

Gene: Sparcetus_15 Start: 7254, Stop: 7874, Start Num: 8
Candidate Starts for Sparcetus_15:

(Start: 2 @7206 has 1 MA's), (Start: 8 @7254 has 3 MA's), (15, 7554), (17, 7578), (21, 7629), (29, 7851),

Gene: Tedro_61 Start: 46648, Stop: 47295, Start Num: 7

Candidate Starts for Tedro_61:

(Start: 1 @46606 has 1 MA's), (Start: 7 @46648 has 29 MA's), (10, 46786),

Gene: TinyMiny_15 Start: 7204, Stop: 7893, Start Num: 2

Candidate Starts for TinyMiny_15:

(Start: 2 @7204 has 1 MA's), (Start: 8 @7252 has 3 MA's), (15, 7552), (17, 7576), (18, 7609), (21, 7627), (26, 7840),

Gene: Tongui_62 Start: 46861, Stop: 47508, Start Num: 7

Candidate Starts for Tongui_62:

(Start: 1 @46819 has 1 MA's), (Start: 7 @46861 has 29 MA's),

Gene: Zeta1847_60 Start: 41648, Stop: 42310, Start Num: 4

Candidate Starts for Zeta1847_60:

(Start: 4 @41648 has 1 MA's), (5, 41663), (Start: 6 @41678 has 1 MA's),