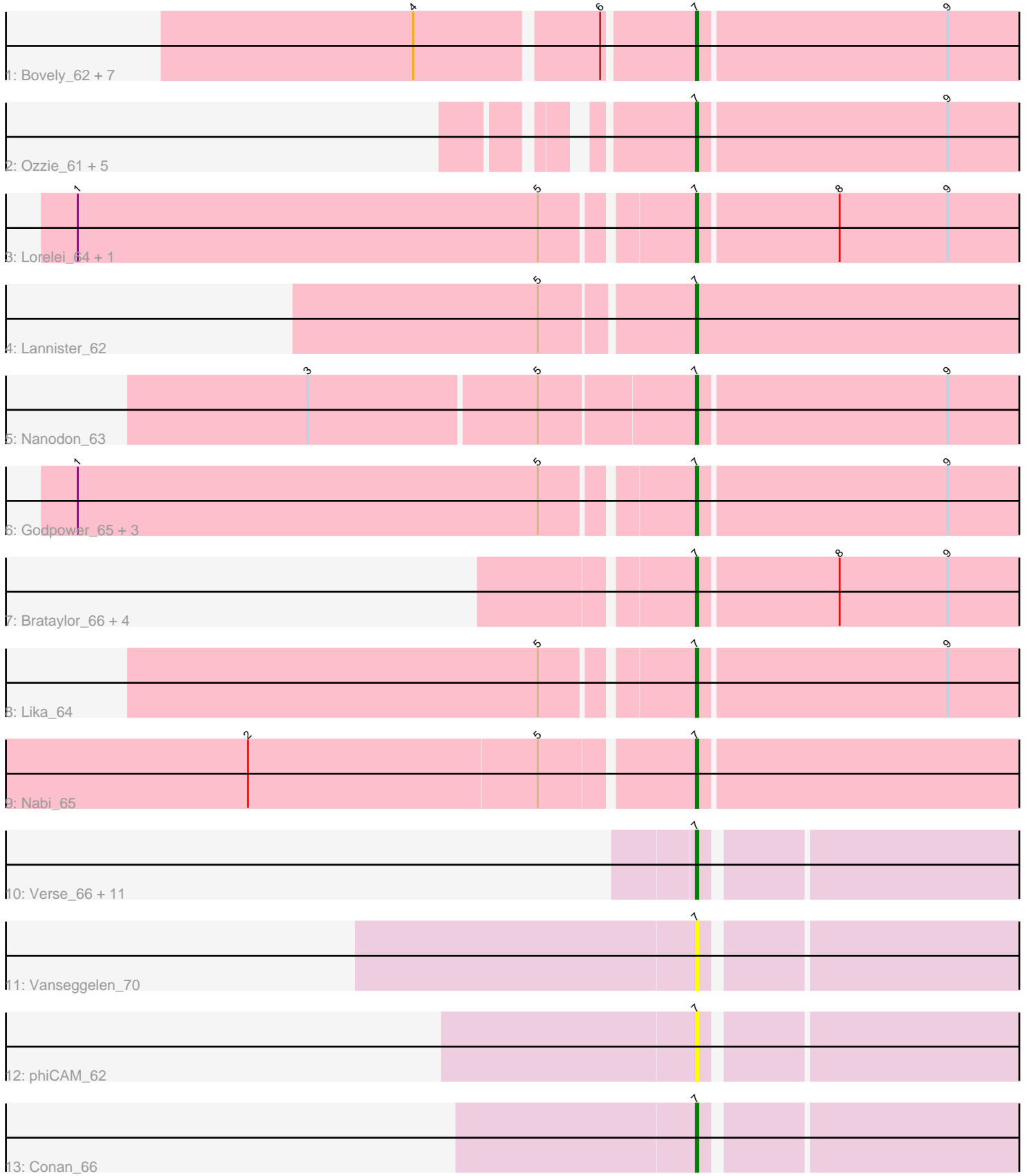


Pham 216298



Note: Tracks are now grouped by subcluster and scaled. Switching in subcluster is indicated by changes in track color. Track scale is now set by default to display the region 30 bp upstream of start 1 to 30 bp downstream of the last possible start. If this default region is judged to be packed too tightly with annotated starts, the track will be further scaled to only show that region of the ORF with annotated starts. This action will be indicated by adding "Zoomed" to the title. For starts, yellow indicates the location of called starts comprised solely of Glimmer/GeneMark auto-annotations, green indicates the location of called starts with at least 1 manual gene annotation.

## Pham 216298 Report

This analysis was run 02/22/25 on database version 588.

Pham number 216298 has 44 members, 4 are drafts.

Phages represented in each track:

- Track 1 : Bovely\_62, Unstoppable\_62, Phettuccine\_62, Esperer\_63, Indigo\_61, Leviticus\_63, Aaronocolus\_62, Nerdos\_61
- Track 2 : Ozzie\_61, Hydra\_64, Caliburn\_61, BeardedLady\_62, Legacy\_61, SunsetPointe\_61
- Track 3 : Lorelei\_64, Rana\_65
- Track 4 : Lannister\_62
- Track 5 : Nanodon\_63
- Track 6 : Godpower\_65, Goby\_65, Sujidade\_65, Toma\_65
- Track 7 : Brataylor\_66, Dattran\_66, Danzina\_65, Celeste\_65, Zemlya\_65
- Track 8 : Lika\_64
- Track 9 : Nabi\_65
- Track 10 : Verse\_66, Amela\_65, Provolone\_66, Speedwell\_68, Dexers\_63, Alsaber\_65, ElGato\_66, Celery\_68, Pavo\_66, Saftant\_63, Kaine\_65, Verabelle\_68
- Track 11 : Vanseggelen\_70
- Track 12 : phiCAM\_62
- Track 13 : Conan\_66

### ***Summary of Final Annotations (See graph section above for start numbers):***

The start number called the most often in the published annotations is 7, it was called in 40 of the 40 non-draft genes in the pham.

Genes that call this "Most Annotated" start:

- Aaronocolus\_62, Alsaber\_65, Amela\_65, BeardedLady\_62, Bovely\_62, Brataylor\_66, Caliburn\_61, Celery\_68, Celeste\_65, Conan\_66, Danzina\_65, Dattran\_66, Dexers\_63, ElGato\_66, Esperer\_63, Goby\_65, Godpower\_65, Hydra\_64, Indigo\_61, Kaine\_65, Lannister\_62, Legacy\_61, Leviticus\_63, Lika\_64, Lorelei\_64, Nabi\_65, Nanodon\_63, Nerdos\_61, Ozzie\_61, Pavo\_66, Phettuccine\_62, Provolone\_66, Rana\_65, Saftant\_63, Speedwell\_68, Sujidade\_65, SunsetPointe\_61, Toma\_65, Unstoppable\_62, Vanseggelen\_70, Verabelle\_68, Verse\_66, Zemlya\_65, phiCAM\_62,

Genes that have the "Most Annotated" start but do not call it:

-

Genes that do not have the "Most Annotated" start:

- 

### Summary by start number:

Start 7:

- Found in 44 of 44 ( 100.0% ) of genes in pham
- Manual Annotations of this start: 40 of 40
- Called 100.0% of time when present
- Phage (with cluster) where this start called: Aaronocolus\_62 (BD1), Alsaber\_65 (BD3), Amela\_65 (BD3), BeardedLady\_62 (BD1), Bovely\_62 (BD1), Brataylor\_66 (BD1), Caliburn\_61 (BD1), Celery\_68 (BD3), Celeste\_65 (BD1), Conan\_66 (BD3), Danzina\_65 (BD1), Dattran\_66 (BD1), Dexers\_63 (BD3), ElGato\_66 (BD3), Esperer\_63 (BD1), Goby\_65 (BD1), Godpower\_65 (BD1), Hydra\_64 (BD1), Indigo\_61 (BD1), Kaine\_65 (BD3), Lannister\_62 (BD1), Legacy\_61 (BD1), Leviticus\_63 (BD1), Lika\_64 (BD1), Lorelei\_64 (BD1), Nabi\_65 (BD1), Nanodon\_63 (BD1), Nerdos\_61 (BD1), Ozzie\_61 (BD1), Pavo\_66 (BD3), Phettuccine\_62 (BD1), Provolone\_66 (BD3), Rana\_65 (BD1), Saftant\_63 (BD3), Speedwell\_68 (BD3), Sujidade\_65 (BD1), SunsetPointe\_61 (BD1), Toma\_65 (BD1), Unstoppable\_62 (BD1), Vanseggelen\_70 (BD3), Verabelle\_68 (BD3), Verse\_66 (BD3), Zemlya\_65 (BD1), phiCAM\_62 (BD3),

### Summary by clusters:

There are 2 clusters represented in this pham: BD1, BD3,

Info for manual annotations of cluster BD1:

- Start number 7 was manually annotated 29 times for cluster BD1.

Info for manual annotations of cluster BD3:

- Start number 7 was manually annotated 11 times for cluster BD3.

### Gene Information:

Gene: Aaronocolus\_62 Start: 43600, Stop: 43325, Start Num: 7

Candidate Starts for Aaronocolus\_62:

(4, 43708), (6, 43636), (Start: 7 @43600 has 40 MA's), (9, 43498),

Gene: Alsaber\_65 Start: 43432, Stop: 43151, Start Num: 7

Candidate Starts for Alsaber\_65:

(Start: 7 @43432 has 40 MA's),

Gene: Amela\_65 Start: 44414, Stop: 44145, Start Num: 7

Candidate Starts for Amela\_65:

(Start: 7 @44414 has 40 MA's),

Gene: BeardedLady\_62 Start: 43698, Stop: 43423, Start Num: 7

Candidate Starts for BeardedLady\_62:

(Start: 7 @43698 has 40 MA's), (9, 43596),

Gene: Bovely\_62 Start: 43603, Stop: 43328, Start Num: 7

Candidate Starts for Bovely\_62:  
(4, 43711), (6, 43639), (Start: 7 @43603 has 40 MA's), (9, 43501),

Gene: Brataylor\_66 Start: 45152, Stop: 44892, Start Num: 7  
Candidate Starts for Brataylor\_66:  
(Start: 7 @45152 has 40 MA's), (8, 45095), (9, 45050),

Gene: Caliburn\_61 Start: 43704, Stop: 43429, Start Num: 7  
Candidate Starts for Caliburn\_61:  
(Start: 7 @43704 has 40 MA's), (9, 43602),

Gene: Celery\_68 Start: 43343, Stop: 43065, Start Num: 7  
Candidate Starts for Celery\_68:  
(Start: 7 @43343 has 40 MA's),

Gene: Celeste\_65 Start: 44617, Stop: 44357, Start Num: 7  
Candidate Starts for Celeste\_65:  
(Start: 7 @44617 has 40 MA's), (8, 44560), (9, 44515),

Gene: Conan\_66 Start: 43683, Stop: 43417, Start Num: 7  
Candidate Starts for Conan\_66:  
(Start: 7 @43683 has 40 MA's),

Gene: Danzina\_65 Start: 44866, Stop: 44606, Start Num: 7  
Candidate Starts for Danzina\_65:  
(Start: 7 @44866 has 40 MA's), (8, 44809), (9, 44764),

Gene: Dattran\_66 Start: 45008, Stop: 44748, Start Num: 7  
Candidate Starts for Dattran\_66:  
(Start: 7 @45008 has 40 MA's), (8, 44951), (9, 44906),

Gene: Dexers\_63 Start: 43658, Stop: 43389, Start Num: 7  
Candidate Starts for Dexers\_63:  
(Start: 7 @43658 has 40 MA's),

Gene: ElGato\_66 Start: 43561, Stop: 43289, Start Num: 7  
Candidate Starts for ElGato\_66:  
(Start: 7 @43561 has 40 MA's),

Gene: Esperer\_63 Start: 43946, Stop: 43671, Start Num: 7  
Candidate Starts for Esperer\_63:  
(4, 44054), (6, 43982), (Start: 7 @43946 has 40 MA's), (9, 43844),

Gene: Goby\_65 Start: 45488, Stop: 45204, Start Num: 7  
Candidate Starts for Goby\_65:  
(1, 45737), (5, 45545), (Start: 7 @45488 has 40 MA's), (9, 45386),

Gene: Godpower\_65 Start: 44764, Stop: 44480, Start Num: 7  
Candidate Starts for Godpower\_65:  
(1, 45013), (5, 44821), (Start: 7 @44764 has 40 MA's), (9, 44662),

Gene: Hydra\_64 Start: 44506, Stop: 44231, Start Num: 7  
Candidate Starts for Hydra\_64:

(Start: 7 @44506 has 40 MA's), (9, 44404),

Gene: Indigo\_61 Start: 43596, Stop: 43321, Start Num: 7  
Candidate Starts for Indigo\_61:  
(4, 43704), (6, 43632), (Start: 7 @43596 has 40 MA's), (9, 43494),

Gene: Kaine\_65 Start: 43456, Stop: 43175, Start Num: 7  
Candidate Starts for Kaine\_65:  
(Start: 7 @43456 has 40 MA's),

Gene: Lannister\_62 Start: 44501, Stop: 44196, Start Num: 7  
Candidate Starts for Lannister\_62:  
(5, 44561), (Start: 7 @44501 has 40 MA's),

Gene: Legacy\_61 Start: 43695, Stop: 43420, Start Num: 7  
Candidate Starts for Legacy\_61:  
(Start: 7 @43695 has 40 MA's), (9, 43593),

Gene: Leviticus\_63 Start: 44133, Stop: 43858, Start Num: 7  
Candidate Starts for Leviticus\_63:  
(4, 44241), (6, 44169), (Start: 7 @44133 has 40 MA's), (9, 44031),

Gene: Lika\_64 Start: 45317, Stop: 45033, Start Num: 7  
Candidate Starts for Lika\_64:  
(5, 45374), (Start: 7 @45317 has 40 MA's), (9, 45215),

Gene: Lorelei\_64 Start: 44624, Stop: 44364, Start Num: 7  
Candidate Starts for Lorelei\_64:  
(1, 44873), (5, 44681), (Start: 7 @44624 has 40 MA's), (8, 44567), (9, 44522),

Gene: Nabi\_65 Start: 45193, Stop: 44897, Start Num: 7  
Candidate Starts for Nabi\_65:  
(2, 45373), (5, 45253), (Start: 7 @45193 has 40 MA's),

Gene: Nanodon\_63 Start: 44114, Stop: 43854, Start Num: 7  
Candidate Starts for Nanodon\_63:  
(3, 44270), (5, 44177), (Start: 7 @44114 has 40 MA's), (9, 44012),

Gene: Nerdos\_61 Start: 43595, Stop: 43320, Start Num: 7  
Candidate Starts for Nerdos\_61:  
(4, 43703), (6, 43631), (Start: 7 @43595 has 40 MA's), (9, 43493),

Gene: Ozzie\_61 Start: 43704, Stop: 43429, Start Num: 7  
Candidate Starts for Ozzie\_61:  
(Start: 7 @43704 has 40 MA's), (9, 43602),

Gene: Pavo\_66 Start: 43632, Stop: 43360, Start Num: 7  
Candidate Starts for Pavo\_66:  
(Start: 7 @43632 has 40 MA's),

Gene: Phettuccine\_62 Start: 43596, Stop: 43321, Start Num: 7  
Candidate Starts for Phettuccine\_62:  
(4, 43704), (6, 43632), (Start: 7 @43596 has 40 MA's), (9, 43494),

Gene: Provolone\_66 Start: 43773, Stop: 43501, Start Num: 7  
Candidate Starts for Provolone\_66:  
(Start: 7 @43773 has 40 MA's),

Gene: Rana\_65 Start: 45046, Stop: 44786, Start Num: 7  
Candidate Starts for Rana\_65:  
(1, 45295), (5, 45103), (Start: 7 @45046 has 40 MA's), (8, 44989), (9, 44944),

Gene: Saftant\_63 Start: 43520, Stop: 43239, Start Num: 7  
Candidate Starts for Saftant\_63:  
(Start: 7 @43520 has 40 MA's),

Gene: Speedwell\_68 Start: 44565, Stop: 44284, Start Num: 7  
Candidate Starts for Speedwell\_68:  
(Start: 7 @44565 has 40 MA's),

Gene: Sujidade\_65 Start: 45552, Stop: 45268, Start Num: 7  
Candidate Starts for Sujidade\_65:  
(1, 45801), (5, 45609), (Start: 7 @45552 has 40 MA's), (9, 45450),

Gene: SunsetPointe\_61 Start: 43711, Stop: 43436, Start Num: 7  
Candidate Starts for SunsetPointe\_61:  
(Start: 7 @43711 has 40 MA's), (9, 43609),

Gene: Toma\_65 Start: 45491, Stop: 45207, Start Num: 7  
Candidate Starts for Toma\_65:  
(1, 45740), (5, 45548), (Start: 7 @45491 has 40 MA's), (9, 45389),

Gene: Unstoppable\_62 Start: 43594, Stop: 43319, Start Num: 7  
Candidate Starts for Unstoppable\_62:  
(4, 43702), (6, 43630), (Start: 7 @43594 has 40 MA's), (9, 43492),

Gene: Vanseggelen\_70 Start: 43501, Stop: 43232, Start Num: 7  
Candidate Starts for Vanseggelen\_70:  
(Start: 7 @43501 has 40 MA's),

Gene: Verabelle\_68 Start: 43108, Stop: 42839, Start Num: 7  
Candidate Starts for Verabelle\_68:  
(Start: 7 @43108 has 40 MA's),

Gene: Verse\_66 Start: 44405, Stop: 44136, Start Num: 7  
Candidate Starts for Verse\_66:  
(Start: 7 @44405 has 40 MA's),

Gene: Zemlya\_65 Start: 45171, Stop: 44911, Start Num: 7  
Candidate Starts for Zemlya\_65:  
(Start: 7 @45171 has 40 MA's), (8, 45114), (9, 45069),

Gene: phiCAM\_62 Start: 45181, Stop: 44900, Start Num: 7  
Candidate Starts for phiCAM\_62:  
(Start: 7 @45181 has 40 MA's),