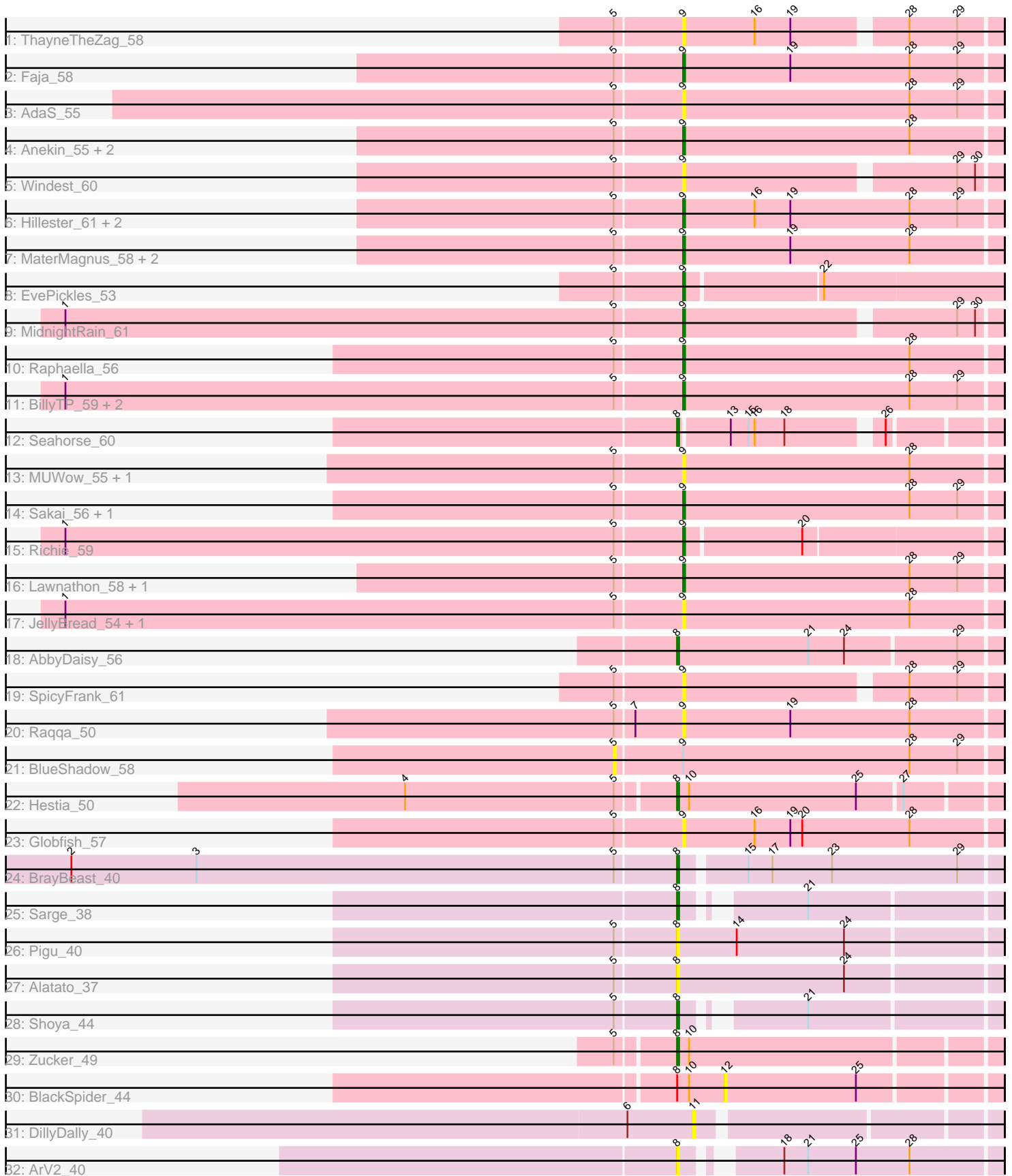


Pham 216299



Note: Tracks are now grouped by subcluster and scaled. Switching in subcluster is indicated by changes in track color. Track scale is now set by default to display the region 30 bp upstream of start 1 to 30 bp downstream of the last possible start. If this default region is judged to be packed too tightly with annotated starts, the track will be further scaled to only show that region of the ORF with annotated starts. This action will be indicated by adding "Zoomed" to the title. For starts, yellow indicates the location of called starts comprised solely of Glimmer/GeneMark auto-annotations, green indicates the location of called starts with at least 1 manual gene annotation.

Pham 216299 Report

This analysis was run 02/22/25 on database version 588.

Pham number 216299 has 44 members, 22 are drafts.

Phages represented in each track:

- Track 1 : ThayneTheZag_58
- Track 2 : Faja_58
- Track 3 : AdaS_55
- Track 4 : Anekin_55, BenchScraper_56, Vopal_60
- Track 5 : Windest_60
- Track 6 : Hillester_61, RadFad_61, Tiff81_53
- Track 7 : MaterMagnus_58, Aikyam_56, Auxilium_53
- Track 8 : EvePickles_53
- Track 9 : MidnightRain_61
- Track 10 : Raphaella_56
- Track 11 : BillyTP_59, Isolde_56, CookieBear_57
- Track 12 : Seahorse_60
- Track 13 : MUWow_55, Bhageatrice_60
- Track 14 : Sakai_56, Gorpy_57
- Track 15 : Richie_59
- Track 16 : Lawnathon_58, Phrank15_58
- Track 17 : JellyBread_54, YoungHarleezy_57
- Track 18 : AbbyDaisy_56
- Track 19 : SpicyFrank_61
- Track 20 : Raqqa_50
- Track 21 : BlueShadow_58
- Track 22 : Hestia_50
- Track 23 : Globfish_57
- Track 24 : BrayBeast_40
- Track 25 : Sarge_38
- Track 26 : Pigu_40
- Track 27 : Alatato_37
- Track 28 : Shoya_44
- Track 29 : Zucker_49
- Track 30 : BlackSpider_44
- Track 31 : DillyDally_40
- Track 32 : ArV2_40

Summary of Final Annotations (See graph section above for start numbers):

The start number called the most often in the published annotations is 9, it was called in 15 of the 22 non-draft genes in the pham.

Genes that call this "Most Annotated" start:

- AdaS_55, Aikyam_56, Anekin_55, Auxilium_53, BenchScraper_56, Bhageatrice_60, BillyTP_59, CookieBear_57, EvePickles_53, Faja_58, Globfish_57, Gorpy_57, Hillester_61, Isolde_56, JellyBread_54, Lawnathon_58, MUWow_55, MaterMagnus_58, MidnightRain_61, Phrank15_58, RadFad_61, Raphaella_56, Raqqa_50, Richie_59, Sakai_56, SpicyFrank_61, ThayneTheZag_58, Tiff81_53, Vopal_60, Windest_60, YoungHarleezy_57,

Genes that have the "Most Annotated" start but do not call it:

- BlueShadow_58,

Genes that do not have the "Most Annotated" start:

- AbbyDaisy_56, Alatato_37, ArV2_40, BlackSpider_44, BrayBeast_40, DillyDally_40, Hestia_50, Pigu_40, Sarge_38, Seahorse_60, Shoya_44, Zucker_49,

Summary by start number:

Start 5:

- Found in 38 of 44 (86.4%) of genes in pham
- No Manual Annotations of this start.
- Called 2.6% of time when present
- Phage (with cluster) where this start called: BlueShadow_58 (AY),

Start 8:

- Found in 11 of 44 (25.0%) of genes in pham
- Manual Annotations of this start: 7 of 22
- Called 90.9% of time when present
- Phage (with cluster) where this start called: AbbyDaisy_56 (AY), Alatato_37 (FB), ArV2_40 (singleton), BrayBeast_40 (FB), Hestia_50 (AY), Pigu_40 (FB), Sarge_38 (FB), Seahorse_60 (AY), Shoya_44 (FB), Zucker_49 (FN),

Start 9:

- Found in 32 of 44 (72.7%) of genes in pham
- Manual Annotations of this start: 15 of 22
- Called 96.9% of time when present
- Phage (with cluster) where this start called: AdaS_55 (AY), Aikyam_56 (AY), Anekin_55 (AY), Auxilium_53 (AY), BenchScraper_56 (AY), Bhageatrice_60 (AY), BillyTP_59 (AY), CookieBear_57 (AY), EvePickles_53 (AY), Faja_58 (AY), Globfish_57 (AY), Gorpy_57 (AY), Hillester_61 (AY), Isolde_56 (AY), JellyBread_54 (AY), Lawnathon_58 (AY), MUWow_55 (AY), MaterMagnus_58 (AY), MidnightRain_61 (AY), Phrank15_58 (AY), RadFad_61 (AY), Raphaella_56 (AY), Raqqa_50 (AY), Richie_59 (AY), Sakai_56 (AY), SpicyFrank_61 (AY), ThayneTheZag_58 (AY), Tiff81_53 (AY), Vopal_60 (AY), Windest_60 (AY), YoungHarleezy_57 (AY),

Start 11:

- Found in 1 of 44 (2.3%) of genes in pham
- No Manual Annotations of this start.
- Called 100.0% of time when present

- Phage (with cluster) where this start called: DillyDally_40 (singleton),

Start 12:

- Found in 1 of 44 (2.3%) of genes in pham
- No Manual Annotations of this start.
- Called 100.0% of time when present
- Phage (with cluster) where this start called: BlackSpider_44 (FN),

Summary by clusters:

There are 4 clusters represented in this pham: AY, FB, singleton, FN,

Info for manual annotations of cluster AY:

- Start number 8 was manually annotated 3 times for cluster AY.
- Start number 9 was manually annotated 15 times for cluster AY.

Info for manual annotations of cluster FB:

- Start number 8 was manually annotated 3 times for cluster FB.

Info for manual annotations of cluster FN:

- Start number 8 was manually annotated 1 time for cluster FN.

Gene Information:

Gene: AbbyDaisy_56 Start: 33760, Stop: 33918, Start Num: 8

Candidate Starts for AbbyDaisy_56:

(Start: 8 @33760 has 7 MA's), (21, 33826), (24, 33844), (29, 33898),

Gene: AdaS_55 Start: 31700, Stop: 31858, Start Num: 9

Candidate Starts for AdaS_55:

(5, 31667), (Start: 9 @31700 has 15 MA's), (28, 31814), (29, 31838),

Gene: Aikyam_56 Start: 31872, Stop: 32030, Start Num: 9

Candidate Starts for Aikyam_56:

(5, 31839), (Start: 9 @31872 has 15 MA's), (19, 31926), (28, 31986),

Gene: Alatato_37 Start: 26513, Stop: 26671, Start Num: 8

Candidate Starts for Alatato_37:

(5, 26483), (Start: 8 @26513 has 7 MA's), (24, 26597),

Gene: Anekin_55 Start: 33544, Stop: 33702, Start Num: 9

Candidate Starts for Anekin_55:

(5, 33511), (Start: 9 @33544 has 15 MA's), (28, 33658),

Gene: ArV2_40 Start: 25889, Stop: 26032, Start Num: 8

Candidate Starts for ArV2_40:

(Start: 8 @25889 has 7 MA's), (18, 25925), (21, 25937), (25, 25961), (28, 25988),

Gene: Auxilium_53 Start: 31029, Stop: 31187, Start Num: 9

Candidate Starts for Auxilium_53:

(5, 30996), (Start: 9 @31029 has 15 MA's), (19, 31083), (28, 31143),

Gene: BenchScraper_56 Start: 33194, Stop: 33352, Start Num: 9

Candidate Starts for BenchScraper_56:

(5, 33161), (Start: 9 @33194 has 15 MA's), (28, 33308),

Gene: Bhageatrice_60 Start: 35468, Stop: 35626, Start Num: 9

Candidate Starts for Bhageatrice_60:

(5, 35435), (Start: 9 @35468 has 15 MA's), (28, 35582),

Gene: BillyTP_59 Start: 35066, Stop: 35224, Start Num: 9

Candidate Starts for BillyTP_59:

(1, 34757), (5, 35033), (Start: 9 @35066 has 15 MA's), (28, 35180), (29, 35204),

Gene: BlackSpider_44 Start: 30207, Stop: 30338, Start Num: 12

Candidate Starts for BlackSpider_44:

(Start: 8 @30183 has 7 MA's), (10, 30189), (12, 30207), (25, 30273),

Gene: BlueShadow_58 Start: 33823, Stop: 34014, Start Num: 5

Candidate Starts for BlueShadow_58:

(5, 33823), (Start: 9 @33856 has 15 MA's), (28, 33970), (29, 33994),

Gene: BrayBeast_40 Start: 27217, Stop: 27372, Start Num: 8

Candidate Starts for BrayBeast_40:

(2, 26914), (3, 26977), (5, 27187), (Start: 8 @27217 has 7 MA's), (15, 27247), (17, 27259), (23, 27289), (29, 27352),

Gene: CookieBear_57 Start: 33450, Stop: 33608, Start Num: 9

Candidate Starts for CookieBear_57:

(1, 33141), (5, 33417), (Start: 9 @33450 has 15 MA's), (28, 33564), (29, 33588),

Gene: DillyDally_40 Start: 27254, Stop: 27394, Start Num: 11

Candidate Starts for DillyDally_40:

(6, 27221), (11, 27254),

Gene: EvePickles_53 Start: 33650, Stop: 33805, Start Num: 9

Candidate Starts for EvePickles_53:

(5, 33617), (Start: 9 @33650 has 15 MA's), (22, 33716),

Gene: Faja_58 Start: 35034, Stop: 35192, Start Num: 9

Candidate Starts for Faja_58:

(5, 35001), (Start: 9 @35034 has 15 MA's), (19, 35088), (28, 35148), (29, 35172),

Gene: Globfish_57 Start: 33549, Stop: 33707, Start Num: 9

Candidate Starts for Globfish_57:

(5, 33516), (Start: 9 @33549 has 15 MA's), (16, 33585), (19, 33603), (20, 33609), (28, 33663),

Gene: Gorpy_57 Start: 34442, Stop: 34600, Start Num: 9

Candidate Starts for Gorpy_57:

(5, 34409), (Start: 9 @34442 has 15 MA's), (28, 34556), (29, 34580),

Gene: Hestia_50 Start: 31086, Stop: 31241, Start Num: 8

Candidate Starts for Hestia_50:

(4, 30954), (5, 31059), (Start: 8 @31086 has 7 MA's), (10, 31092), (25, 31176), (27, 31197),

Gene: Hillester_61 Start: 34795, Stop: 34953, Start Num: 9
Candidate Starts for Hillester_61:
(5, 34762), (Start: 9 @34795 has 15 MA's), (16, 34831), (19, 34849), (28, 34909), (29, 34933),

Gene: Isolde_56 Start: 33119, Stop: 33277, Start Num: 9
Candidate Starts for Isolde_56:
(1, 32810), (5, 33086), (Start: 9 @33119 has 15 MA's), (28, 33233), (29, 33257),

Gene: JellyBread_54 Start: 32240, Stop: 32398, Start Num: 9
Candidate Starts for JellyBread_54:
(1, 31931), (5, 32207), (Start: 9 @32240 has 15 MA's), (28, 32354),

Gene: Lawnathon_58 Start: 33611, Stop: 33769, Start Num: 9
Candidate Starts for Lawnathon_58:
(5, 33578), (Start: 9 @33611 has 15 MA's), (28, 33725), (29, 33749),

Gene: MUWow_55 Start: 33531, Stop: 33689, Start Num: 9
Candidate Starts for MUWow_55:
(5, 33498), (Start: 9 @33531 has 15 MA's), (28, 33645),

Gene: MaterMagnus_58 Start: 34044, Stop: 34202, Start Num: 9
Candidate Starts for MaterMagnus_58:
(5, 34011), (Start: 9 @34044 has 15 MA's), (19, 34098), (28, 34158),

Gene: MidnightRain_61 Start: 34972, Stop: 35121, Start Num: 9
Candidate Starts for MidnightRain_61:
(1, 34663), (5, 34939), (Start: 9 @34972 has 15 MA's), (29, 35101), (30, 35110),

Gene: Phrank15_58 Start: 33748, Stop: 33906, Start Num: 9
Candidate Starts for Phrank15_58:
(5, 33715), (Start: 9 @33748 has 15 MA's), (28, 33862), (29, 33886),

Gene: Pigu_40 Start: 26382, Stop: 26540, Start Num: 8
Candidate Starts for Pigu_40:
(5, 26352), (Start: 8 @26382 has 7 MA's), (14, 26412), (24, 26466),

Gene: RadFad_61 Start: 34795, Stop: 34953, Start Num: 9
Candidate Starts for RadFad_61:
(5, 34762), (Start: 9 @34795 has 15 MA's), (16, 34831), (19, 34849), (28, 34909), (29, 34933),

Gene: Raphaella_56 Start: 33054, Stop: 33212, Start Num: 9
Candidate Starts for Raphaella_56:
(5, 33021), (Start: 9 @33054 has 15 MA's), (28, 33168),

Gene: Raqqa_50 Start: 31059, Stop: 31217, Start Num: 9
Candidate Starts for Raqqa_50:
(5, 31026), (7, 31035), (Start: 9 @31059 has 15 MA's), (19, 31113), (28, 31173),

Gene: Richie_59 Start: 34120, Stop: 34272, Start Num: 9
Candidate Starts for Richie_59:
(1, 33811), (5, 34087), (Start: 9 @34120 has 15 MA's), (20, 34177),

Gene: Sakai_56 Start: 33153, Stop: 33311, Start Num: 9
Candidate Starts for Sakai_56:
(5, 33120), (Start: 9 @33153 has 15 MA's), (28, 33267), (29, 33291),

Gene: Sarge_38 Start: 25563, Stop: 25703, Start Num: 8
Candidate Starts for Sarge_38:
(Start: 8 @25563 has 7 MA's), (21, 25611),

Gene: Seahorse_60 Start: 35386, Stop: 35529, Start Num: 8
Candidate Starts for Seahorse_60:
(Start: 8 @35386 has 7 MA's), (13, 35410), (15, 35419), (16, 35422), (18, 35437), (26, 35479),

Gene: Shoya_44 Start: 27531, Stop: 27671, Start Num: 8
Candidate Starts for Shoya_44:
(5, 27501), (Start: 8 @27531 has 7 MA's), (21, 27579),

Gene: SpicyFrank_61 Start: 34658, Stop: 34807, Start Num: 9
Candidate Starts for SpicyFrank_61:
(5, 34625), (Start: 9 @34658 has 15 MA's), (28, 34763), (29, 34787),

Gene: ThayneTheZag_58 Start: 33227, Stop: 33376, Start Num: 9
Candidate Starts for ThayneTheZag_58:
(5, 33194), (Start: 9 @33227 has 15 MA's), (16, 33263), (19, 33281), (28, 33332), (29, 33356),

Gene: Tiff81_53 Start: 31564, Stop: 31722, Start Num: 9
Candidate Starts for Tiff81_53:
(5, 31531), (Start: 9 @31564 has 15 MA's), (16, 31600), (19, 31618), (28, 31678), (29, 31702),

Gene: Vopal_60 Start: 36689, Stop: 36838, Start Num: 9
Candidate Starts for Vopal_60:
(5, 36656), (Start: 9 @36689 has 15 MA's), (28, 36794),

Gene: Windest_60 Start: 32459, Stop: 32608, Start Num: 9
Candidate Starts for Windest_60:
(5, 32426), (Start: 9 @32459 has 15 MA's), (29, 32588), (30, 32597),

Gene: YoungHarleezy_57 Start: 33617, Stop: 33775, Start Num: 9
Candidate Starts for YoungHarleezy_57:
(1, 33308), (5, 33584), (Start: 9 @33617 has 15 MA's), (28, 33731),

Gene: Zucker_49 Start: 32109, Stop: 32264, Start Num: 8
Candidate Starts for Zucker_49:
(5, 32082), (Start: 8 @32109 has 7 MA's), (10, 32115),