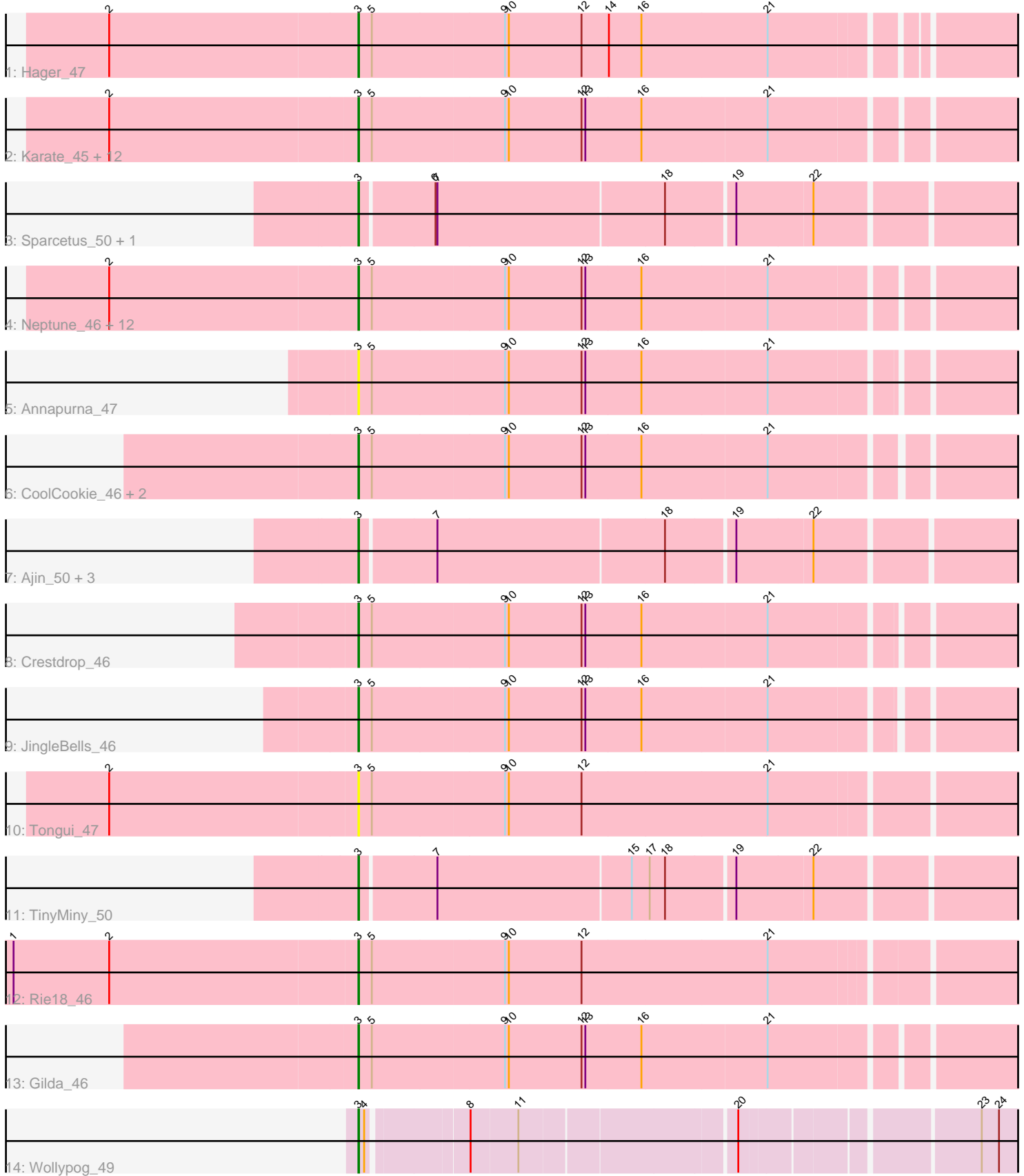


Pham 216301



Note: Tracks are now grouped by subcluster and scaled. Switching in subcluster is indicated by changes in track color. Track scale is now set by default to display the region 30 bp upstream of start 1 to 30 bp downstream of the last possible start. If this default region is judged to be packed too tightly with annotated starts, the track will be further scaled to only show that region of the ORF with annotated starts. This action will be indicated by adding "Zoomed" to the title. For starts, yellow indicates the location of called starts comprised solely of Glimmer/GeneMark auto-annotations, green indicates the location of called starts with at least 1 manual gene annotation.

Pham 216301 Report

This analysis was run 02/22/25 on database version 588.

Pham number 216301 has 44 members, 8 are drafts.

Phages represented in each track:

- Track 1 : Hager_47
- Track 2 : Karate_45, Aesir_45, Chivey_46, JDawG_45, DannyDe_46, Snakehole_46, Dauntless_45, MortySmith_44, Haunter_46, Tedro_46, Erudite_45, Hiddenleaf_46, FreddieHg_46
- Track 3 : Sparcetus_50, RikSengupta_50
- Track 4 : Neptune_46, Pharpay_46, Anakin_46, Rachella_46, Poultruss_45, Krampus_46, OverHedge_46, NarutoRun_46, Cybele_46, SilentWarrior_46, Kate_47, AnnaSerena_46, Artiphact_46
- Track 5 : Annapurna_47
- Track 6 : CoolCookie_46, Potty_46, PhunaPhoke_46
- Track 7 : Ajin_50, Kors_51, Bramble_51, LordBart_50
- Track 8 : Crestdrop_46
- Track 9 : JingleBells_46
- Track 10 : Tongui_47
- Track 11 : TinyMiny_50
- Track 12 : Rie18_46
- Track 13 : Gilda_46
- Track 14 : Wollypog_49

Summary of Final Annotations (See graph section above for start numbers):

The start number called the most often in the published annotations is 3, it was called in 36 of the 36 non-draft genes in the pham.

Genes that call this "Most Annotated" start:

- Aesir_45, Ajin_50, Anakin_46, AnnaSerena_46, Annapurna_47, Artiphact_46, Bramble_51, Chivey_46, CoolCookie_46, Crestdrop_46, Cybele_46, DannyDe_46, Dauntless_45, Erudite_45, FreddieHg_46, Gilda_46, Hager_47, Haunter_46, Hiddenleaf_46, JDawG_45, JingleBells_46, Karate_45, Kate_47, Kors_51, Krampus_46, LordBart_50, MortySmith_44, NarutoRun_46, Neptune_46, OverHedge_46, Pharpay_46, PhunaPhoke_46, Potty_46, Poultruss_45, Rachella_46, Rie18_46, RikSengupta_50, SilentWarrior_46, Snakehole_46, Sparcetus_50, Tedro_46, TinyMiny_50, Tongui_47, Wollypog_49,

Genes that have the "Most Annotated" start but do not call it:

-

Genes that do not have the "Most Annotated" start:

-

Summary by start number:

Start 3:

- Found in 44 of 44 (100.0%) of genes in pham
- Manual Annotations of this start: 36 of 36
- Called 100.0% of time when present
- Phage (with cluster) where this start called: Aesir_45 (EF), Ajin_50 (EF), Anakin_46 (EF), AnnaSerena_46 (EF), Annapurna_47 (EF), Artiphact_46 (EF), Bramble_51 (EF), Chivey_46 (EF), CoolCookie_46 (EF), Crestdrop_46 (EF), Cybele_46 (EF), DannyDe_46 (EF), Dauntless_45 (EF), Erudite_45 (EF), FreddieHg_46 (EF), Gilda_46 (EF), Hager_47 (EF), Haunter_46 (EF), Hiddenleaf_46 (EF), JDawG_45 (EF), JingleBells_46 (EF), Karate_45 (EF), Kate_47 (EF), Kors_51 (EF), Krampus_46 (EF), LordBart_50 (EF), MortySmith_44 (EF), NarutoRun_46 (EF), Neptune_46 (EF), OverHedge_46 (EF), Pharpay_46 (EF), PhunaPhoke_46 (EF), Potty_46 (EF), Poultruss_45 (EF), Rachella_46 (EF), Rie18_46 (EF), RikSengupta_50 (EF), SilentWarrior_46 (EF), Snakehole_46 (EF), Sparcetus_50 (EF), Tedro_46 (EF), TinyMiny_50 (EF), Tongui_47 (EF), Wollypog_49 (singleton),

Summary by clusters:

There are 2 clusters represented in this pham: singleton, EF,

Info for manual annotations of cluster EF:

- Start number 3 was manually annotated 35 times for cluster EF.

Gene Information:

Gene: Aesir_45 Start: 30636, Stop: 31667, Start Num: 3

Candidate Starts for Aesir_45:

(2, 30252), (Start: 3 @30636 has 36 MA's), (5, 30657), (9, 30861), (10, 30867), (12, 30981), (13, 30987), (16, 31074), (21, 31266),

Gene: Ajin_50 Start: 31955, Stop: 32980, Start Num: 3

Candidate Starts for Ajin_50:

(Start: 3 @31955 has 36 MA's), (7, 32069), (18, 32417), (19, 32519), (22, 32636),

Gene: Anakin_46 Start: 30992, Stop: 32026, Start Num: 3

Candidate Starts for Anakin_46:

(2, 30605), (Start: 3 @30992 has 36 MA's), (5, 31013), (9, 31217), (10, 31223), (12, 31337), (13, 31343), (16, 31430), (21, 31622),

Gene: AnnaSerena_46 Start: 31027, Stop: 32061, Start Num: 3

Candidate Starts for AnnaSerena_46:

(2, 30640), (Start: 3 @31027 has 36 MA's), (5, 31048), (9, 31252), (10, 31258), (12, 31372), (13, 31378), (16, 31465), (21, 31657),

Gene: Annapurna_47 Start: 30265, Stop: 31296, Start Num: 3
Candidate Starts for Annapurna_47:
(Start: 3 @30265 has 36 MA's), (5, 30286), (9, 30490), (10, 30496), (12, 30610), (13, 30616), (16, 30703), (21, 30895),

Gene: Artiphact_46 Start: 31016, Stop: 32050, Start Num: 3
Candidate Starts for Artiphact_46:
(2, 30629), (Start: 3 @31016 has 36 MA's), (5, 31037), (9, 31241), (10, 31247), (12, 31361), (13, 31367), (16, 31454), (21, 31646),

Gene: Bramble_51 Start: 32004, Stop: 33029, Start Num: 3
Candidate Starts for Bramble_51:
(Start: 3 @32004 has 36 MA's), (7, 32118), (18, 32466), (19, 32568), (22, 32685),

Gene: Chivey_46 Start: 30214, Stop: 31257, Start Num: 3
Candidate Starts for Chivey_46:
(2, 29830), (Start: 3 @30214 has 36 MA's), (5, 30235), (9, 30439), (10, 30445), (12, 30559), (13, 30565), (16, 30652), (21, 30844),

Gene: CoolCookie_46 Start: 31022, Stop: 32053, Start Num: 3
Candidate Starts for CoolCookie_46:
(Start: 3 @31022 has 36 MA's), (5, 31043), (9, 31247), (10, 31253), (12, 31367), (13, 31373), (16, 31460), (21, 31652),

Gene: Crestdrop_46 Start: 30245, Stop: 31276, Start Num: 3
Candidate Starts for Crestdrop_46:
(Start: 3 @30245 has 36 MA's), (5, 30266), (9, 30470), (10, 30476), (12, 30590), (13, 30596), (16, 30683), (21, 30875),

Gene: Cybele_46 Start: 30992, Stop: 32026, Start Num: 3
Candidate Starts for Cybele_46:
(2, 30605), (Start: 3 @30992 has 36 MA's), (5, 31013), (9, 31217), (10, 31223), (12, 31337), (13, 31343), (16, 31430), (21, 31622),

Gene: DannyDe_46 Start: 30220, Stop: 31251, Start Num: 3
Candidate Starts for DannyDe_46:
(2, 29836), (Start: 3 @30220 has 36 MA's), (5, 30241), (9, 30445), (10, 30451), (12, 30565), (13, 30571), (16, 30658), (21, 30850),

Gene: Dauntless_45 Start: 30572, Stop: 31603, Start Num: 3
Candidate Starts for Dauntless_45:
(2, 30188), (Start: 3 @30572 has 36 MA's), (5, 30593), (9, 30797), (10, 30803), (12, 30917), (13, 30923), (16, 31010), (21, 31202),

Gene: Erudite_45 Start: 30572, Stop: 31603, Start Num: 3
Candidate Starts for Erudite_45:
(2, 30188), (Start: 3 @30572 has 36 MA's), (5, 30593), (9, 30797), (10, 30803), (12, 30917), (13, 30923), (16, 31010), (21, 31202),

Gene: FreddieHg_46 Start: 30230, Stop: 31267, Start Num: 3
Candidate Starts for FreddieHg_46:

(2, 29846), (Start: 3 @30230 has 36 MA's), (5, 30251), (9, 30455), (10, 30461), (12, 30575), (13, 30581), (16, 30668), (21, 30860),

Gene: Gilda_46 Start: 31013, Stop: 32047, Start Num: 3

Candidate Starts for Gilda_46:

(Start: 3 @31013 has 36 MA's), (5, 31034), (9, 31238), (10, 31244), (12, 31358), (13, 31364), (16, 31451), (21, 31643),

Gene: Hager_47 Start: 30441, Stop: 31469, Start Num: 3

Candidate Starts for Hager_47:

(2, 30054), (Start: 3 @30441 has 36 MA's), (5, 30462), (9, 30666), (10, 30672), (12, 30786), (14, 30828), (16, 30879), (21, 31074),

Gene: Haunter_46 Start: 30396, Stop: 31430, Start Num: 3

Candidate Starts for Haunter_46:

(2, 30012), (Start: 3 @30396 has 36 MA's), (5, 30417), (9, 30621), (10, 30627), (12, 30741), (13, 30747), (16, 30834), (21, 31026),

Gene: Hiddenleaf_46 Start: 30214, Stop: 31257, Start Num: 3

Candidate Starts for Hiddenleaf_46:

(2, 29830), (Start: 3 @30214 has 36 MA's), (5, 30235), (9, 30439), (10, 30445), (12, 30559), (13, 30565), (16, 30652), (21, 30844),

Gene: JDawG_45 Start: 30631, Stop: 31662, Start Num: 3

Candidate Starts for JDawG_45:

(2, 30247), (Start: 3 @30631 has 36 MA's), (5, 30652), (9, 30856), (10, 30862), (12, 30976), (13, 30982), (16, 31069), (21, 31261),

Gene: JingleBells_46 Start: 30365, Stop: 31393, Start Num: 3

Candidate Starts for JingleBells_46:

(Start: 3 @30365 has 36 MA's), (5, 30386), (9, 30590), (10, 30596), (12, 30710), (13, 30716), (16, 30803), (21, 30995),

Gene: Karate_45 Start: 31014, Stop: 32048, Start Num: 3

Candidate Starts for Karate_45:

(2, 30630), (Start: 3 @31014 has 36 MA's), (5, 31035), (9, 31239), (10, 31245), (12, 31359), (13, 31365), (16, 31452), (21, 31644),

Gene: Kate_47 Start: 31024, Stop: 32058, Start Num: 3

Candidate Starts for Kate_47:

(2, 30637), (Start: 3 @31024 has 36 MA's), (5, 31045), (9, 31249), (10, 31255), (12, 31369), (13, 31375), (16, 31462), (21, 31654),

Gene: Kors_51 Start: 32032, Stop: 33069, Start Num: 3

Candidate Starts for Kors_51:

(Start: 3 @32032 has 36 MA's), (7, 32146), (18, 32494), (19, 32596), (22, 32713),

Gene: Krampus_46 Start: 31024, Stop: 32061, Start Num: 3

Candidate Starts for Krampus_46:

(2, 30637), (Start: 3 @31024 has 36 MA's), (5, 31045), (9, 31249), (10, 31255), (12, 31369), (13, 31375), (16, 31462), (21, 31654),

Gene: LordBart_50 Start: 31941, Stop: 32966, Start Num: 3

Candidate Starts for LordBart_50:

(Start: 3 @31941 has 36 MA's), (7, 32055), (18, 32403), (19, 32505), (22, 32622),

Gene: MortySmith_44 Start: 30049, Stop: 31080, Start Num: 3

Candidate Starts for MortySmith_44:

(2, 29665), (Start: 3 @30049 has 36 MA's), (5, 30070), (9, 30274), (10, 30280), (12, 30394), (13, 30400), (16, 30487), (21, 30679),

Gene: NarutoRun_46 Start: 30992, Stop: 32026, Start Num: 3

Candidate Starts for NarutoRun_46:

(2, 30605), (Start: 3 @30992 has 36 MA's), (5, 31013), (9, 31217), (10, 31223), (12, 31337), (13, 31343), (16, 31430), (21, 31622),

Gene: Neptune_46 Start: 30992, Stop: 32026, Start Num: 3

Candidate Starts for Neptune_46:

(2, 30605), (Start: 3 @30992 has 36 MA's), (5, 31013), (9, 31217), (10, 31223), (12, 31337), (13, 31343), (16, 31430), (21, 31622),

Gene: OverHedge_46 Start: 30982, Stop: 32016, Start Num: 3

Candidate Starts for OverHedge_46:

(2, 30595), (Start: 3 @30982 has 36 MA's), (5, 31003), (9, 31207), (10, 31213), (12, 31327), (13, 31333), (16, 31420), (21, 31612),

Gene: Pharpay_46 Start: 31037, Stop: 32071, Start Num: 3

Candidate Starts for Pharpay_46:

(2, 30650), (Start: 3 @31037 has 36 MA's), (5, 31058), (9, 31262), (10, 31268), (12, 31382), (13, 31388), (16, 31475), (21, 31667),

Gene: PhunaPhoke_46 Start: 31010, Stop: 32041, Start Num: 3

Candidate Starts for PhunaPhoke_46:

(Start: 3 @31010 has 36 MA's), (5, 31031), (9, 31235), (10, 31241), (12, 31355), (13, 31361), (16, 31448), (21, 31640),

Gene: Potty_46 Start: 31015, Stop: 32046, Start Num: 3

Candidate Starts for Potty_46:

(Start: 3 @31015 has 36 MA's), (5, 31036), (9, 31240), (10, 31246), (12, 31360), (13, 31366), (16, 31453), (21, 31645),

Gene: Poultruss_45 Start: 31330, Stop: 32364, Start Num: 3

Candidate Starts for Poultruss_45:

(2, 30943), (Start: 3 @31330 has 36 MA's), (5, 31351), (9, 31555), (10, 31561), (12, 31675), (13, 31681), (16, 31768), (21, 31960),

Gene: Rachella_46 Start: 31018, Stop: 32052, Start Num: 3

Candidate Starts for Rachella_46:

(2, 30631), (Start: 3 @31018 has 36 MA's), (5, 31039), (9, 31243), (10, 31249), (12, 31363), (13, 31369), (16, 31456), (21, 31648),

Gene: Rie18_46 Start: 30512, Stop: 31552, Start Num: 3

Candidate Starts for Rie18_46:

(1, 29978), (2, 30128), (Start: 3 @30512 has 36 MA's), (5, 30533), (9, 30737), (10, 30743), (12, 30857), (21, 31145),

Gene: RikSengupta_50 Start: 32069, Stop: 33094, Start Num: 3
Candidate Starts for RikSengupta_50:
(Start: 3 @32069 has 36 MA's), (6, 32180), (7, 32183), (18, 32531), (19, 32633), (22, 32750),

Gene: SilentWarrior_46 Start: 30230, Stop: 31261, Start Num: 3
Candidate Starts for SilentWarrior_46:
(2, 29843), (Start: 3 @30230 has 36 MA's), (5, 30251), (9, 30455), (10, 30461), (12, 30575), (13, 30581), (16, 30668), (21, 30860),

Gene: Snakehole_46 Start: 30192, Stop: 31235, Start Num: 3
Candidate Starts for Snakehole_46:
(2, 29808), (Start: 3 @30192 has 36 MA's), (5, 30213), (9, 30417), (10, 30423), (12, 30537), (13, 30543), (16, 30630), (21, 30822),

Gene: Sparcetus_50 Start: 31946, Stop: 32971, Start Num: 3
Candidate Starts for Sparcetus_50:
(Start: 3 @31946 has 36 MA's), (6, 32057), (7, 32060), (18, 32408), (19, 32510), (22, 32627),

Gene: Tedro_46 Start: 30446, Stop: 31486, Start Num: 3
Candidate Starts for Tedro_46:
(2, 30062), (Start: 3 @30446 has 36 MA's), (5, 30467), (9, 30671), (10, 30677), (12, 30791), (13, 30797), (16, 30884), (21, 31076),

Gene: TinyMiny_50 Start: 31967, Stop: 32992, Start Num: 3
Candidate Starts for TinyMiny_50:
(Start: 3 @31967 has 36 MA's), (7, 32081), (15, 32378), (17, 32405), (18, 32429), (19, 32531), (22, 32648),

Gene: Tongui_47 Start: 30566, Stop: 31612, Start Num: 3
Candidate Starts for Tongui_47:
(2, 30182), (Start: 3 @30566 has 36 MA's), (5, 30587), (9, 30791), (10, 30797), (12, 30911), (21, 31199),

Gene: Wollypog_49 Start: 35619, Stop: 36602, Start Num: 3
Candidate Starts for Wollypog_49:
(Start: 3 @35619 has 36 MA's), (4, 35628), (8, 35772), (11, 35844), (20, 36162), (23, 36501), (24, 36528),