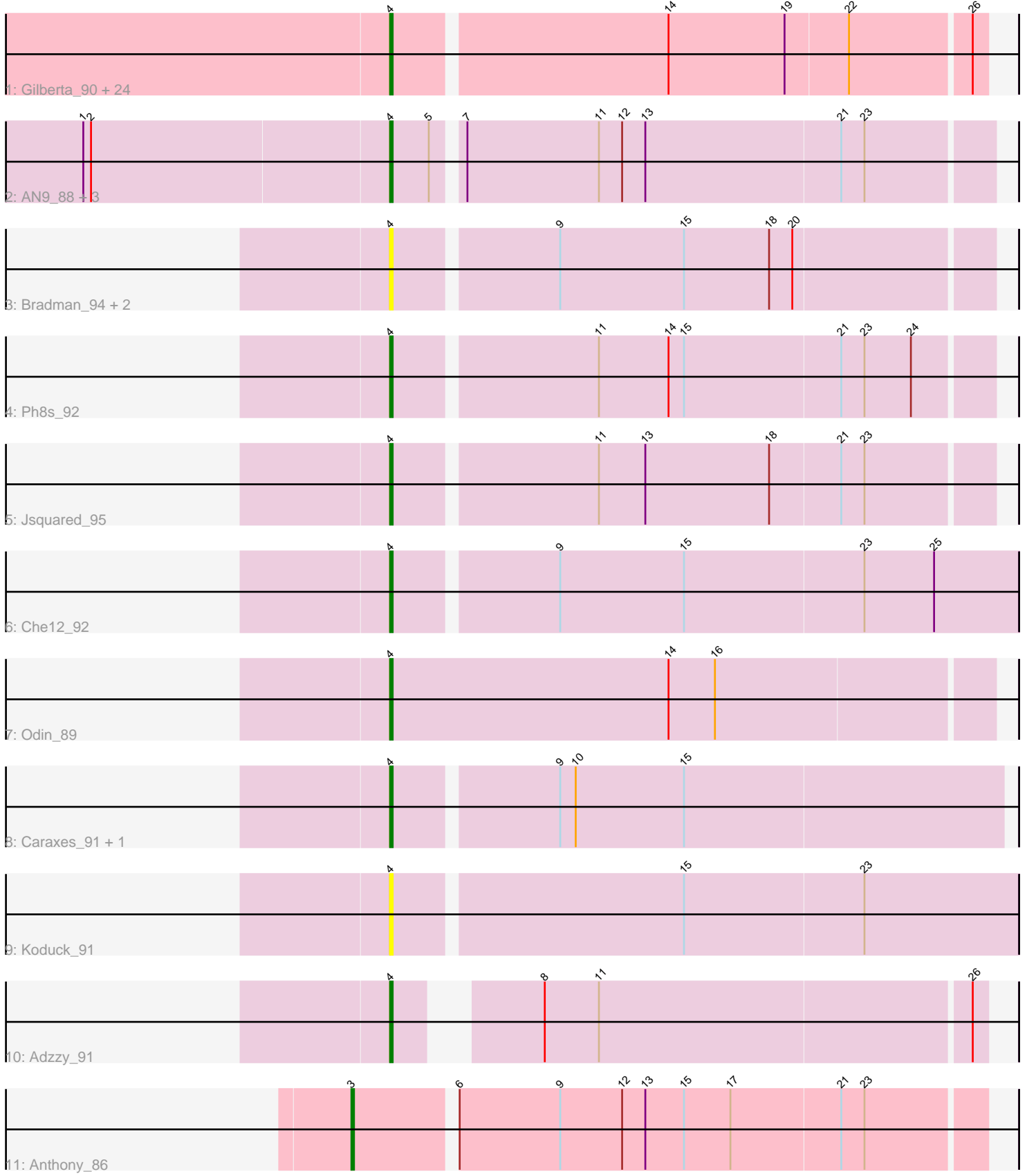


Pham 216327



Note: Tracks are now grouped by subcluster and scaled. Switching in subcluster is indicated by changes in track color. Track scale is now set by default to display the region 30 bp upstream of start 1 to 30 bp downstream of the last possible start. If this default region is judged to be packed too tightly with annotated starts, the track will be further scaled to only show that region of the ORF with annotated starts. This action will be indicated by adding "Zoomed" to the title. For starts, yellow indicates the location of called starts comprised solely of Glimmer/GeneMark auto-annotations, green indicates the location of called starts with at least 1 manual gene annotation.

Pham 216327 Report

This analysis was run 02/22/25 on database version 588.

Pham number 216327 has 41 members, 6 are drafts.

Phages represented in each track:

- Track 1 : Gilberta_90, Insomnia_92, Ebony_91, Snape_92, Bowtie_88, Timothy_92, Mabel_92, Hutc2_89, Mulciber_91, Joselito_90, Et2Brutus_92, Orange_92, Bachome_90, Aneem_93, Lucivia_93, Sham4_89, Flaverint_93, Bud_85, Petersenfast_86, Fibonacci_92, TinyTimmy_90, MaCh_92, Jabith_92, Munch_91, Salz_88
- Track 2 : AN9_88, ANI8_88, C3_81, VC3_87
- Track 3 : Bradman_94, MajorMajor_88, Quokka_93
- Track 4 : Ph8s_92
- Track 5 : Jsquared_95
- Track 6 : Che12_92
- Track 7 : Odin_89
- Track 8 : Caraxes_91, Superchunk_90
- Track 9 : Koduck_91
- Track 10 : Adzzy_91
- Track 11 : Anthony_86

Summary of Final Annotations (See graph section above for start numbers):

The start number called the most often in the published annotations is 4, it was called in 34 of the 35 non-draft genes in the pham.

Genes that call this "Most Annotated" start:

- AN9_88, ANI8_88, Adzzy_91, Aneem_93, Bachome_90, Bowtie_88, Bradman_94, Bud_85, C3_81, Caraxes_91, Che12_92, Ebony_91, Et2Brutus_92, Fibonacci_92, Flaverint_93, Gilberta_90, Hutc2_89, Insomnia_92, Jabith_92, Joselito_90, Jsquared_95, Koduck_91, Lucivia_93, MaCh_92, Mabel_92, MajorMajor_88, Mulciber_91, Munch_91, Odin_89, Orange_92, Petersenfast_86, Ph8s_92, Quokka_93, Salz_88, Sham4_89, Snape_92, Superchunk_90, Timothy_92, TinyTimmy_90, VC3_87,

Genes that have the "Most Annotated" start but do not call it:

-

Genes that do not have the "Most Annotated" start:

- Anthony_86,

Summary by start number:

Start 3:

- Found in 1 of 41 (2.4%) of genes in pham
- Manual Annotations of this start: 1 of 35
- Called 100.0% of time when present
- Phage (with cluster) where this start called: Anthony_86 (A20),

Start 4:

- Found in 40 of 41 (97.6%) of genes in pham
- Manual Annotations of this start: 34 of 35
- Called 100.0% of time when present
- Phage (with cluster) where this start called: AN9_88 (A2), ANI8_88 (A2), Adzzy_91 (A2), Aneem_93 (A11), Bachome_90 (A11), Bowtie_88 (A11), Bradman_94 (A2), Bud_85 (A11), C3_81 (A2), Caraxes_91 (A2), Che12_92 (A2), Ebony_91 (A11), Et2Brutus_92 (A11), Fibonacci_92 (A11), Flaverint_93 (A11), Gilberta_90 (A11), Hutc2_89 (A11), Insomnia_92 (A11), Jabith_92 (A11), Joselito_90 (A11), Jsquared_95 (A2), Koduck_91 (A2), Lucivia_93 (A11), MaCh_92 (A11), Mabel_92 (A11), MajorMajor_88 (A2), Mulciber_91 (A11), Munch_91 (A11), Odin_89 (A2), Orange_92 (A11), Petersenfast_86 (A11), Ph8s_92 (A2), Quokka_93 (A2), Salz_88 (A11), Sham4_89 (A11), Snape_92 (A11), Superchunk_90 (A2), Timothy_92 (A11), TinyTimmy_90 (A11), VC3_87 (A2),

Summary by clusters:

There are 3 clusters represented in this pham: A20, A2, A11,

Info for manual annotations of cluster A11:

- Start number 4 was manually annotated 24 times for cluster A11.

Info for manual annotations of cluster A2:

- Start number 4 was manually annotated 10 times for cluster A2.

Info for manual annotations of cluster A20:

- Start number 3 was manually annotated 1 time for cluster A20.

Gene Information:

Gene: AN9_88 Start: 48050, Stop: 47826, Start Num: 4

Candidate Starts for AN9_88:

(1, 48167), (2, 48164), (Start: 4 @48050 has 34 MA's), (5, 48035), (7, 48026), (11, 47975), (12, 47966), (13, 47957), (21, 47882), (23, 47873),

Gene: ANI8_88 Start: 48050, Stop: 47826, Start Num: 4

Candidate Starts for ANI8_88:

(1, 48167), (2, 48164), (Start: 4 @48050 has 34 MA's), (5, 48035), (7, 48026), (11, 47975), (12, 47966), (13, 47957), (21, 47882), (23, 47873),

Gene: Adzzy_91 Start: 48978, Stop: 48769, Start Num: 4

Candidate Starts for Adzzy_91:

(Start: 4 @48978 has 34 MA's), (8, 48936), (11, 48915), (26, 48774),

Gene: Aneem_93 Start: 49166, Stop: 48945, Start Num: 4

Candidate Starts for Aneem_93:

(Start: 4 @49166 has 34 MA's), (14, 49064), (19, 49019), (22, 48995), (26, 48950),

Gene: Anthony_86 Start: 49361, Stop: 49125, Start Num: 3

Candidate Starts for Anthony_86:

(Start: 3 @49361 has 1 MA's), (6, 49325), (9, 49286), (12, 49262), (13, 49253), (15, 49238), (17, 49220), (21, 49178), (23, 49169),

Gene: Bachome_90 Start: 48214, Stop: 47993, Start Num: 4

Candidate Starts for Bachome_90:

(Start: 4 @48214 has 34 MA's), (14, 48112), (19, 48067), (22, 48043), (26, 47998),

Gene: Bowtie_88 Start: 47773, Stop: 47552, Start Num: 4

Candidate Starts for Bowtie_88:

(Start: 4 @47773 has 34 MA's), (14, 47671), (19, 47626), (22, 47602), (26, 47557),

Gene: Bradman_94 Start: 49404, Stop: 49180, Start Num: 4

Candidate Starts for Bradman_94:

(Start: 4 @49404 has 34 MA's), (9, 49344), (15, 49296), (18, 49263), (20, 49254),

Gene: Bud_85 Start: 47872, Stop: 47651, Start Num: 4

Candidate Starts for Bud_85:

(Start: 4 @47872 has 34 MA's), (14, 47770), (19, 47725), (22, 47701), (26, 47656),

Gene: C3_81 Start: 48050, Stop: 47826, Start Num: 4

Candidate Starts for C3_81:

(1, 48167), (2, 48164), (Start: 4 @48050 has 34 MA's), (5, 48035), (7, 48026), (11, 47975), (12, 47966), (13, 47957), (21, 47882), (23, 47873),

Gene: Caraxes_91 Start: 48956, Stop: 48726, Start Num: 4

Candidate Starts for Caraxes_91:

(Start: 4 @48956 has 34 MA's), (9, 48896), (10, 48890), (15, 48848),

Gene: Che12_92 Start: 49078, Stop: 48842, Start Num: 4

Candidate Starts for Che12_92:

(Start: 4 @49078 has 34 MA's), (9, 49018), (15, 48970), (23, 48901), (25, 48874),

Gene: Ebony_91 Start: 48737, Stop: 48516, Start Num: 4

Candidate Starts for Ebony_91:

(Start: 4 @48737 has 34 MA's), (14, 48635), (19, 48590), (22, 48566), (26, 48521),

Gene: Et2Brutus_92 Start: 49014, Stop: 48793, Start Num: 4

Candidate Starts for Et2Brutus_92:

(Start: 4 @49014 has 34 MA's), (14, 48912), (19, 48867), (22, 48843), (26, 48798),

Gene: Fibonacci_92 Start: 49020, Stop: 48799, Start Num: 4

Candidate Starts for Fibonacci_92:

(Start: 4 @49020 has 34 MA's), (14, 48918), (19, 48873), (22, 48849), (26, 48804),

Gene: Flaverint_93 Start: 49164, Stop: 48943, Start Num: 4

Candidate Starts for Flaverint_93:

(Start: 4 @49164 has 34 MA's), (14, 49062), (19, 49017), (22, 48993), (26, 48948),

Gene: Gilberta_90 Start: 48040, Stop: 47819, Start Num: 4

Candidate Starts for Gilberta_90:

(Start: 4 @48040 has 34 MA's), (14, 47938), (19, 47893), (22, 47869), (26, 47824),

Gene: Hutc2_89 Start: 47904, Stop: 47683, Start Num: 4

Candidate Starts for Hutc2_89:

(Start: 4 @47904 has 34 MA's), (14, 47802), (19, 47757), (22, 47733), (26, 47688),

Gene: Insomnia_92 Start: 49198, Stop: 48977, Start Num: 4

Candidate Starts for Insomnia_92:

(Start: 4 @49198 has 34 MA's), (14, 49096), (19, 49051), (22, 49027), (26, 48982),

Gene: Jabith_92 Start: 49212, Stop: 48991, Start Num: 4

Candidate Starts for Jabith_92:

(Start: 4 @49212 has 34 MA's), (14, 49110), (19, 49065), (22, 49041), (26, 48996),

Gene: Joselito_90 Start: 48918, Stop: 48697, Start Num: 4

Candidate Starts for Joselito_90:

(Start: 4 @48918 has 34 MA's), (14, 48816), (19, 48771), (22, 48747), (26, 48702),

Gene: Jsquared_95 Start: 49647, Stop: 49423, Start Num: 4

Candidate Starts for Jsquared_95:

(Start: 4 @49647 has 34 MA's), (11, 49572), (13, 49554), (18, 49506), (21, 49479), (23, 49470),

Gene: Koduck_91 Start: 49028, Stop: 48792, Start Num: 4

Candidate Starts for Koduck_91:

(Start: 4 @49028 has 34 MA's), (15, 48920), (23, 48851),

Gene: Lucivia_93 Start: 49197, Stop: 48976, Start Num: 4

Candidate Starts for Lucivia_93:

(Start: 4 @49197 has 34 MA's), (14, 49095), (19, 49050), (22, 49026), (26, 48981),

Gene: MaCh_92 Start: 49161, Stop: 48940, Start Num: 4

Candidate Starts for MaCh_92:

(Start: 4 @49161 has 34 MA's), (14, 49059), (19, 49014), (22, 48990), (26, 48945),

Gene: Mabel_92 Start: 49162, Stop: 48941, Start Num: 4

Candidate Starts for Mabel_92:

(Start: 4 @49162 has 34 MA's), (14, 49060), (19, 49015), (22, 48991), (26, 48946),

Gene: MajorMajor_88 Start: 47696, Stop: 47472, Start Num: 4

Candidate Starts for MajorMajor_88:

(Start: 4 @47696 has 34 MA's), (9, 47636), (15, 47588), (18, 47555), (20, 47546),

Gene: Mulciber_91 Start: 49017, Stop: 48796, Start Num: 4

Candidate Starts for Mulciber_91:

(Start: 4 @49017 has 34 MA's), (14, 48915), (19, 48870), (22, 48846), (26, 48801),

Gene: Munch_91 Start: 49166, Stop: 48945, Start Num: 4

Candidate Starts for Munch_91:

(Start: 4 @49166 has 34 MA's), (14, 49064), (19, 49019), (22, 48995), (26, 48950),

Gene: Odin_89 Start: 49418, Stop: 49188, Start Num: 4

Candidate Starts for Odin_89:

(Start: 4 @49418 has 34 MA's), (14, 49310), (16, 49292),

Gene: Orange_92 Start: 48716, Stop: 48495, Start Num: 4

Candidate Starts for Orange_92:

(Start: 4 @48716 has 34 MA's), (14, 48614), (19, 48569), (22, 48545), (26, 48500),

Gene: Petersenfast_86 Start: 47597, Stop: 47376, Start Num: 4

Candidate Starts for Petersenfast_86:

(Start: 4 @47597 has 34 MA's), (14, 47495), (19, 47450), (22, 47426), (26, 47381),

Gene: Ph8s_92 Start: 49205, Stop: 48981, Start Num: 4

Candidate Starts for Ph8s_92:

(Start: 4 @49205 has 34 MA's), (11, 49130), (14, 49103), (15, 49097), (21, 49037), (23, 49028), (24, 49010),

Gene: Quokka_93 Start: 49405, Stop: 49181, Start Num: 4

Candidate Starts for Quokka_93:

(Start: 4 @49405 has 34 MA's), (9, 49345), (15, 49297), (18, 49264), (20, 49255),

Gene: Salz_88 Start: 47826, Stop: 47605, Start Num: 4

Candidate Starts for Salz_88:

(Start: 4 @47826 has 34 MA's), (14, 47724), (19, 47679), (22, 47655), (26, 47610),

Gene: Sham4_89 Start: 47912, Stop: 47691, Start Num: 4

Candidate Starts for Sham4_89:

(Start: 4 @47912 has 34 MA's), (14, 47810), (19, 47765), (22, 47741), (26, 47696),

Gene: Snape_92 Start: 48705, Stop: 48484, Start Num: 4

Candidate Starts for Snape_92:

(Start: 4 @48705 has 34 MA's), (14, 48603), (19, 48558), (22, 48534), (26, 48489),

Gene: Superchunk_90 Start: 48956, Stop: 48726, Start Num: 4

Candidate Starts for Superchunk_90:

(Start: 4 @48956 has 34 MA's), (9, 48896), (10, 48890), (15, 48848),

Gene: Timothy_92 Start: 48682, Stop: 48461, Start Num: 4

Candidate Starts for Timothy_92:

(Start: 4 @48682 has 34 MA's), (14, 48580), (19, 48535), (22, 48511), (26, 48466),

Gene: TinyTimmy_90 Start: 48411, Stop: 48190, Start Num: 4

Candidate Starts for TinyTimmy_90:

(Start: 4 @48411 has 34 MA's), (14, 48309), (19, 48264), (22, 48240), (26, 48195),

Gene: VC3_87 Start: 48050, Stop: 47826, Start Num: 4

Candidate Starts for VC3_87:

(1, 48167), (2, 48164), (Start: 4 @48050 has 34 MA's), (5, 48035), (7, 48026), (11, 47975), (12, 47966), (13, 47957), (21, 47882), (23, 47873),