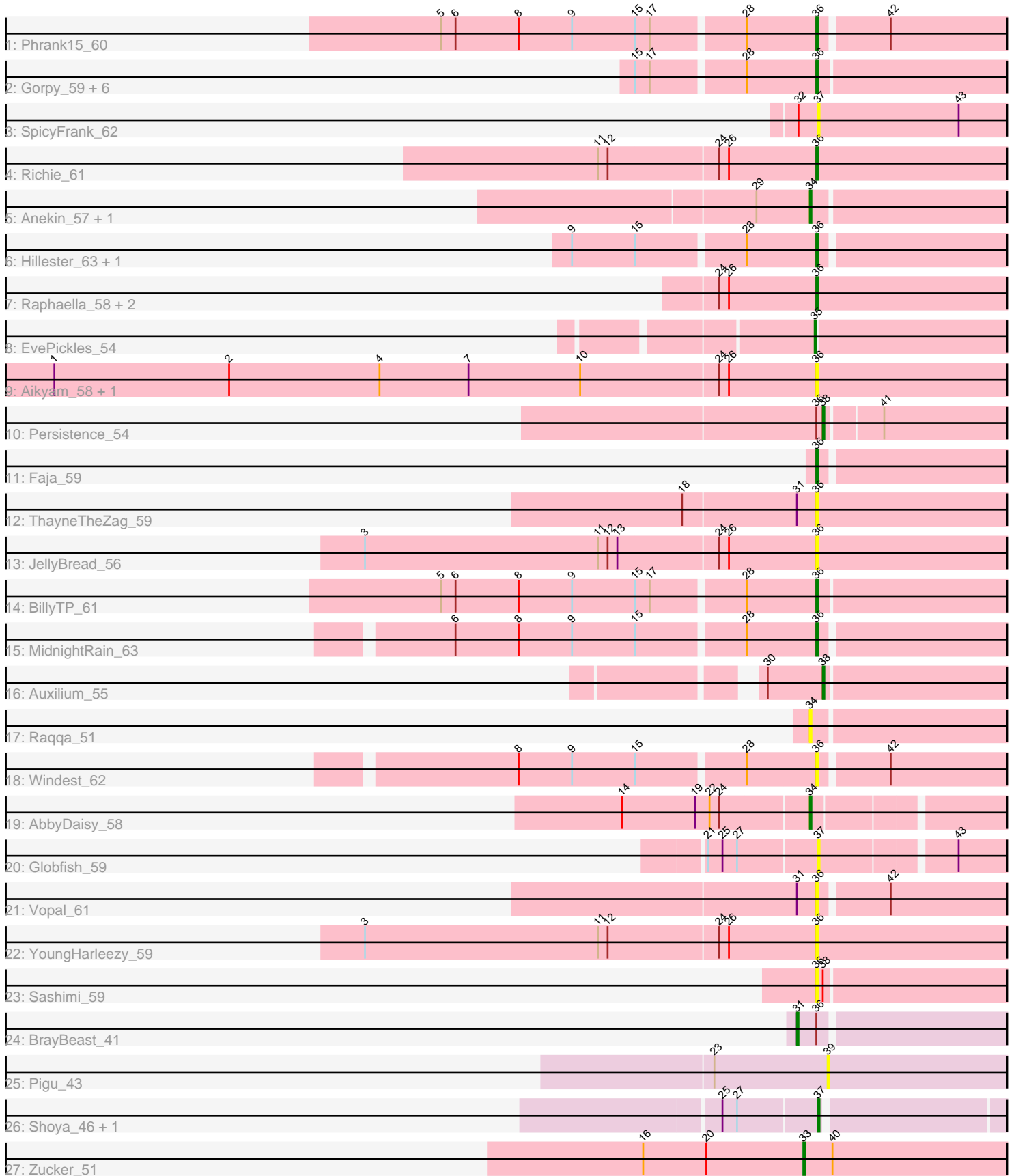


Pham 216338



Note: Tracks are now grouped by subcluster and scaled. Switching in subcluster is indicated by changes in track color. Track scale is now set by default to display the region 30 bp upstream of start 1 to 30 bp downstream of the last possible start. If this default region is judged to be packed too tightly with annotated starts, the track will be further scaled to only show that region of the ORF with annotated starts. This action will be indicated by adding "Zoomed" to the title. For starts, yellow indicates the location of called starts comprised solely of Glimmer/GeneMark auto-annotations, green indicates the location of called starts with at least 1 manual gene annotation.

Pham 216338 Report

This analysis was run 02/22/25 on database version 588.

Pham number 216338 has 39 members, 19 are drafts.

Phages represented in each track:

- Track 1 : Phrank15_60
- Track 2 : Gorpy_59, AdaS_57, Lawnathon_60, BlueShadow_60, CookieBear_59, Isolde_58, Sakai_58
- Track 3 : SpicyFrank_62
- Track 4 : Richie_61
- Track 5 : Anekin_57, BenchScraper_58
- Track 6 : Hillester_63, RadFad_63
- Track 7 : Raphaella_58, MUWow_58, Bhageatrice_62
- Track 8 : EvePickles_54
- Track 9 : Aikyam_58, MaterMagnus_60
- Track 10 : Persistence_54
- Track 11 : Faja_59
- Track 12 : ThayneTheZag_59
- Track 13 : JellyBread_56
- Track 14 : BillyTP_61
- Track 15 : MidnightRain_63
- Track 16 : Auxilium_55
- Track 17 : Raqqa_51
- Track 18 : Windest_62
- Track 19 : AbbyDaisy_58
- Track 20 : Globfish_59
- Track 21 : Vopal_61
- Track 22 : YoungHarleezy_59
- Track 23 : Sashimi_59
- Track 24 : BrayBeast_41
- Track 25 : Pigu_43
- Track 26 : Shoya_46, Sarge_40
- Track 27 : Zucker_51

Summary of Final Annotations (See graph section above for start numbers):

The start number called the most often in the published annotations is 36, it was called in 10 of the 20 non-draft genes in the pham.

Genes that call this "Most Annotated" start:

- AdaS_57, Aikyam_58, Bhageatrice_62, BillyTP_61, BlueShadow_60, CookieBear_59, Faja_59, Gorpy_59, Hillester_63, Isolde_58, JellyBread_56, Lawnathon_60, MUWow_58, MaterMagnus_60, MidnightRain_63, Phrank15_60, RadFad_63, Raphaella_58, Richie_61, Sakai_58, Sashimi_59, ThayneTheZag_59, Vopal_61, Windest_62, YoungHarleezy_59,

Genes that have the "Most Annotated" start but do not call it:

- BrayBeast_41, Persistence_54,

Genes that do not have the "Most Annotated" start:

- AbbyDaisy_58, Anekin_57, Auxilium_55, BenchScraper_58, EvePickles_54, Globfish_59, Pigu_43, Raqqa_51, Sarge_40, Shoya_46, SpicyFrank_62, Zucker_51,

Summary by start number:

Start 31:

- Found in 3 of 39 (7.7%) of genes in pham
- Manual Annotations of this start: 1 of 20
- Called 33.3% of time when present
- Phage (with cluster) where this start called: BrayBeast_41 (FB),

Start 33:

- Found in 1 of 39 (2.6%) of genes in pham
- Manual Annotations of this start: 1 of 20
- Called 100.0% of time when present
- Phage (with cluster) where this start called: Zucker_51 (FN),

Start 34:

- Found in 4 of 39 (10.3%) of genes in pham
- Manual Annotations of this start: 3 of 20
- Called 100.0% of time when present
- Phage (with cluster) where this start called: AbbyDaisy_58 (AY), Anekin_57 (AY), BenchScraper_58 (AY), Raqqa_51 (AY),

Start 35:

- Found in 1 of 39 (2.6%) of genes in pham
- Manual Annotations of this start: 1 of 20
- Called 100.0% of time when present
- Phage (with cluster) where this start called: EvePickles_54 (AY),

Start 36:

- Found in 27 of 39 (69.2%) of genes in pham
- Manual Annotations of this start: 10 of 20
- Called 92.6% of time when present
- Phage (with cluster) where this start called: AdaS_57 (AY), Aikyam_58 (AY), Bhageatrice_62 (AY), BillyTP_61 (AY), BlueShadow_60 (AY), CookieBear_59 (AY), Faja_59 (AY), Gorpy_59 (AY), Hillester_63 (AY), Isolde_58 (AY), JellyBread_56 (AY), Lawnathon_60 (AY), MUWow_58 (AY), MaterMagnus_60 (AY), MidnightRain_63 (AY), Phrank15_60 (AY), RadFad_63 (AY), Raphaella_58 (AY), Richie_61 (AY), Sakai_58 (AY), Sashimi_59 (AY), ThayneTheZag_59 (AY), Vopal_61 (AY), Windest_62 (AY), YoungHarleezy_59 (AY),

Start 37:

- Found in 4 of 39 (10.3%) of genes in pham
- Manual Annotations of this start: 2 of 20
- Called 100.0% of time when present
- Phage (with cluster) where this start called: Globfish_59 (AY), Sarge_40 (FB), Shoya_46 (FB), SpicyFrank_62 (AY),

Start 38:

- Found in 3 of 39 (7.7%) of genes in pham
- Manual Annotations of this start: 2 of 20
- Called 66.7% of time when present
- Phage (with cluster) where this start called: Auxilium_55 (AY), Persistence_54 (AY),

Start 39:

- Found in 1 of 39 (2.6%) of genes in pham
- No Manual Annotations of this start.
- Called 100.0% of time when present
- Phage (with cluster) where this start called: Pigu_43 (FB),

Summary by clusters:

There are 3 clusters represented in this pham: AY, FB, FN,

Info for manual annotations of cluster AY:

- Start number 34 was manually annotated 3 times for cluster AY.
- Start number 35 was manually annotated 1 time for cluster AY.
- Start number 36 was manually annotated 10 times for cluster AY.
- Start number 38 was manually annotated 2 times for cluster AY.

Info for manual annotations of cluster FB:

- Start number 31 was manually annotated 1 time for cluster FB.
- Start number 37 was manually annotated 2 times for cluster FB.

Info for manual annotations of cluster FN:

- Start number 33 was manually annotated 1 time for cluster FN.

Gene Information:

Gene: AbbyDaisy_58 Start: 34196, Stop: 34399, Start Num: 34

Candidate Starts for AbbyDaisy_58:

(14, 34085), (19, 34130), (22, 34139), (24, 34145), (Start: 34 @34196 has 3 MA's),

Gene: AdaS_57 Start: 32061, Stop: 32216, Start Num: 36

Candidate Starts for AdaS_57:

(15, 31956), (17, 31965), (28, 32019), (Start: 36 @32061 has 10 MA's),

Gene: Aikyam_58 Start: 32377, Stop: 32535, Start Num: 36

Candidate Starts for Aikyam_58:

(1, 31909), (2, 32017), (4, 32110), (7, 32164), (10, 32233), (24, 32317), (26, 32323), (Start: 36 @32377 has 10 MA's),

Gene: Anekin_57 Start: 33919, Stop: 34074, Start Num: 34
Candidate Starts for Anekin_57:
(29, 33886), (Start: 34 @33919 has 3 MA's),

Gene: Auxilium_55 Start: 31537, Stop: 31689, Start Num: 38
Candidate Starts for Auxilium_55:
(30, 31504), (Start: 38 @31537 has 2 MA's),

Gene: BenchScraper_58 Start: 33569, Stop: 33727, Start Num: 34
Candidate Starts for BenchScraper_58:
(29, 33536), (Start: 34 @33569 has 3 MA's),

Gene: Bhageatrice_62 Start: 36081, Stop: 36239, Start Num: 36
Candidate Starts for Bhageatrice_62:
(24, 36021), (26, 36027), (Start: 36 @36081 has 10 MA's),

Gene: BillyTP_61 Start: 35427, Stop: 35582, Start Num: 36
Candidate Starts for BillyTP_61:
(5, 35202), (6, 35211), (8, 35250), (9, 35283), (15, 35322), (17, 35331), (28, 35385), (Start: 36 @35427 has 10 MA's),

Gene: BlueShadow_60 Start: 34217, Stop: 34372, Start Num: 36
Candidate Starts for BlueShadow_60:
(15, 34112), (17, 34121), (28, 34175), (Start: 36 @34217 has 10 MA's),

Gene: BrayBeast_41 Start: 27369, Stop: 27533, Start Num: 31
Candidate Starts for BrayBeast_41:
(Start: 31 @27369 has 1 MA's), (Start: 36 @27381 has 10 MA's),

Gene: CookieBear_59 Start: 33811, Stop: 33966, Start Num: 36
Candidate Starts for CookieBear_59:
(15, 33706), (17, 33715), (28, 33769), (Start: 36 @33811 has 10 MA's),

Gene: EvePickles_54 Start: 33798, Stop: 33956, Start Num: 35
Candidate Starts for EvePickles_54:
(Start: 35 @33798 has 1 MA's),

Gene: Faja_59 Start: 35189, Stop: 35341, Start Num: 36
Candidate Starts for Faja_59:
(Start: 36 @35189 has 10 MA's),

Gene: Globfish_59 Start: 34198, Stop: 34398, Start Num: 37
Candidate Starts for Globfish_59:
(21, 34132), (25, 34141), (27, 34150), (Start: 37 @34198 has 2 MA's), (43, 34276),

Gene: Gorpy_59 Start: 34803, Stop: 34958, Start Num: 36
Candidate Starts for Gorpy_59:
(15, 34698), (17, 34707), (28, 34761), (Start: 36 @34803 has 10 MA's),

Gene: Hillester_63 Start: 35153, Stop: 35305, Start Num: 36
Candidate Starts for Hillester_63:
(9, 35009), (15, 35048), (28, 35111), (Start: 36 @35153 has 10 MA's),

Gene: Isolde_58 Start: 33480, Stop: 33635, Start Num: 36
Candidate Starts for Isolde_58:
(15, 33375), (17, 33384), (28, 33438), (Start: 36 @33480 has 10 MA's),

Gene: JellyBread_56 Start: 32829, Stop: 32987, Start Num: 36
Candidate Starts for JellyBread_56:
(3, 32553), (11, 32697), (12, 32703), (13, 32709), (24, 32769), (26, 32775), (Start: 36 @32829 has 10 MA's),

Gene: Lawnathon_60 Start: 33972, Stop: 34127, Start Num: 36
Candidate Starts for Lawnathon_60:
(15, 33867), (17, 33876), (28, 33930), (Start: 36 @33972 has 10 MA's),

Gene: MUWow_58 Start: 34144, Stop: 34302, Start Num: 36
Candidate Starts for MUWow_58:
(24, 34084), (26, 34090), (Start: 36 @34144 has 10 MA's),

Gene: MaterMagnus_60 Start: 34549, Stop: 34707, Start Num: 36
Candidate Starts for MaterMagnus_60:
(1, 34081), (2, 34189), (4, 34282), (7, 34336), (10, 34405), (24, 34489), (26, 34495), (Start: 36 @34549 has 10 MA's),

Gene: MidnightRain_63 Start: 35324, Stop: 35476, Start Num: 36
Candidate Starts for MidnightRain_63:
(6, 35108), (8, 35147), (9, 35180), (15, 35219), (28, 35282), (Start: 36 @35324 has 10 MA's),

Gene: Persistence_54 Start: 32763, Stop: 32915, Start Num: 38
Candidate Starts for Persistence_54:
(Start: 36 @32760 has 10 MA's), (Start: 38 @32763 has 2 MA's), (41, 32796),

Gene: Phrank15_60 Start: 34109, Stop: 34261, Start Num: 36
Candidate Starts for Phrank15_60:
(5, 33884), (6, 33893), (8, 33932), (9, 33965), (15, 34004), (17, 34013), (28, 34067), (Start: 36 @34109 has 10 MA's), (42, 34148),

Gene: Pigu_43 Start: 26743, Stop: 26892, Start Num: 39
Candidate Starts for Pigu_43:
(23, 26674), (39, 26743),

Gene: RadFad_63 Start: 35153, Stop: 35305, Start Num: 36
Candidate Starts for RadFad_63:
(9, 35009), (15, 35048), (28, 35111), (Start: 36 @35153 has 10 MA's),

Gene: Raphaella_58 Start: 33667, Stop: 33825, Start Num: 36
Candidate Starts for Raphaella_58:
(24, 33607), (26, 33613), (Start: 36 @33667 has 10 MA's),

Gene: Raqqa_51 Start: 31407, Stop: 31562, Start Num: 34
Candidate Starts for Raqqa_51:
(Start: 34 @31407 has 3 MA's),

Gene: Richie_61 Start: 34703, Stop: 34861, Start Num: 36
Candidate Starts for Richie_61:

(11, 34571), (12, 34577), (24, 34643), (26, 34649), (Start: 36 @34703 has 10 MA's),

Gene: Sakai_58 Start: 33514, Stop: 33669, Start Num: 36

Candidate Starts for Sakai_58:

(15, 33409), (17, 33418), (28, 33472), (Start: 36 @33514 has 10 MA's),

Gene: Sarge_40 Start: 26191, Stop: 26391, Start Num: 37

Candidate Starts for Sarge_40:

(25, 26134), (27, 26143), (Start: 37 @26191 has 2 MA's),

Gene: Sashimi_59 Start: 34553, Stop: 34708, Start Num: 36

Candidate Starts for Sashimi_59:

(Start: 36 @34553 has 10 MA's), (Start: 38 @34556 has 2 MA's),

Gene: Shoya_46 Start: 28159, Stop: 28359, Start Num: 37

Candidate Starts for Shoya_46:

(25, 28102), (27, 28111), (Start: 37 @28159 has 2 MA's),

Gene: SpicyFrank_62 Start: 34804, Stop: 35013, Start Num: 37

Candidate Starts for SpicyFrank_62:

(32, 34792), (Start: 37 @34804 has 2 MA's), (43, 34891),

Gene: ThayneTheZag_59 Start: 33373, Stop: 33531, Start Num: 36

Candidate Starts for ThayneTheZag_59:

(18, 33292), (Start: 31 @33361 has 1 MA's), (Start: 36 @33373 has 10 MA's),

Gene: Vopal_61 Start: 36835, Stop: 36987, Start Num: 36

Candidate Starts for Vopal_61:

(Start: 31 @36823 has 1 MA's), (Start: 36 @36835 has 10 MA's), (42, 36874),

Gene: Windest_62 Start: 32811, Stop: 32963, Start Num: 36

Candidate Starts for Windest_62:

(8, 32634), (9, 32667), (15, 32706), (28, 32769), (Start: 36 @32811 has 10 MA's), (42, 32850),

Gene: YoungHarleezy_59 Start: 34206, Stop: 34364, Start Num: 36

Candidate Starts for YoungHarleezy_59:

(3, 33930), (11, 34074), (12, 34080), (24, 34146), (26, 34152), (Start: 36 @34206 has 10 MA's),

Gene: Zucker_51 Start: 32868, Stop: 33035, Start Num: 33

Candidate Starts for Zucker_51:

(16, 32769), (20, 32808), (Start: 33 @32868 has 1 MA's), (40, 32886),