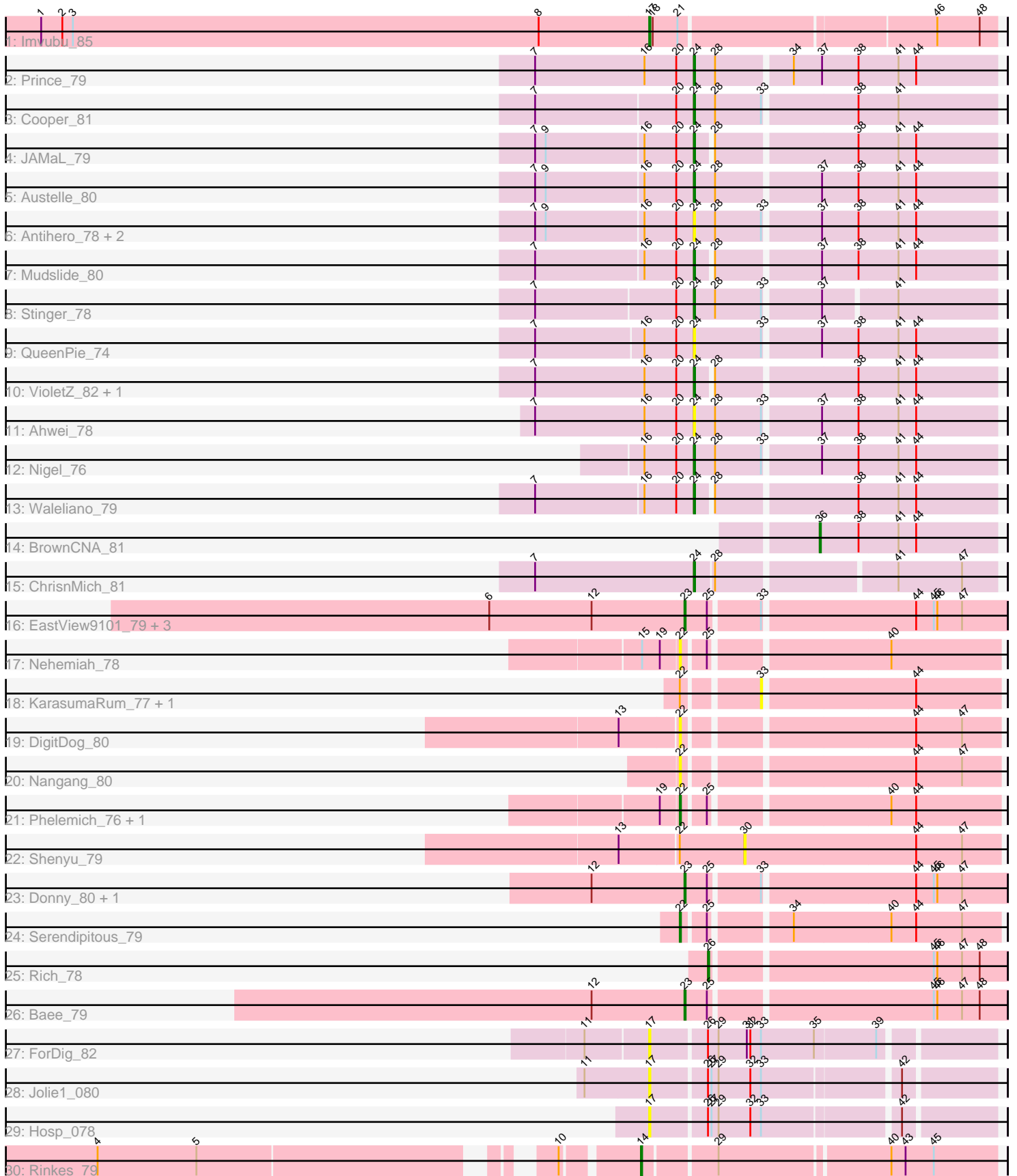


Pham 216341



Note: Tracks are now grouped by subcluster and scaled. Switching in subcluster is indicated by changes in track color. Track scale is now set by default to display the region 30 bp upstream of start 1 to 30 bp downstream of the last possible start. If this default region is judged to be packed too tightly with annotated starts, the track will be further scaled to only show that region of the ORF with annotated starts. This action will be indicated by adding "Zoomed" to the title. For starts, yellow indicates the location of called starts comprised solely of Glimmer/GeneMark auto-annotations, green indicates the location of called starts with at least 1 manual gene annotation.

Pham 216341 Report

This analysis was run 02/22/25 on database version 588.

Pham number 216341 has 39 members, 16 are drafts.

Phages represented in each track:

- Track 1 : Imvubu_85
- Track 2 : Prince_79
- Track 3 : Cooper_81
- Track 4 : JAMaL_79
- Track 5 : Austelle_80
- Track 6 : Antihero_78, GinPorsche_78, Epah_78
- Track 7 : Mudslide_80
- Track 8 : Stinger_78
- Track 9 : QueenPie_74
- Track 10 : VioletZ_82, Magpie_77
- Track 11 : Ahwei_78
- Track 12 : Nigel_76
- Track 13 : Waleliano_79
- Track 14 : BrownCNA_81
- Track 15 : ChrisnMich_81
- Track 16 : EastView9101_79, Suigeneris_81, Acadian_80, Rita130_79
- Track 17 : Nehemiah_78
- Track 18 : KarasumaRum_77, StinkyVeggy_77
- Track 19 : DigitDog_80
- Track 20 : Nangang_80
- Track 21 : Phelemich_76, Reprobate_78
- Track 22 : Shenyu_79
- Track 23 : Donny_80, SirJeffery_78
- Track 24 : Serendipitous_79
- Track 25 : Rich_78
- Track 26 : Bae_79
- Track 27 : ForDig_82
- Track 28 : Jolie1_080
- Track 29 : Hosp_078
- Track 30 : Rinkes_79

Summary of Final Annotations (See graph section above for start numbers):

The start number called the most often in the published annotations is 24, it was called in 11 of the 23 non-draft genes in the pham.

Genes that call this "Most Annotated" start:

- Ahwei_78, Antihero_78, Austelle_80, ChrisnMich_81, Cooper_81, Epah_78, GinPorsche_78, JAMaL_79, Magpie_77, Mudslide_80, Nigel_76, Prince_79, QueenPie_74, Stinger_78, VioletZ_82, Waleliano_79,

Genes that have the "Most Annotated" start but do not call it:

-

Genes that do not have the "Most Annotated" start:

- Acadian_80, Bae_79, BrownCNA_81, DigitDog_80, Donny_80, EastView9101_79, ForDig_82, Hosp_078, Imvubu_85, Jolie1_080, KarasumaRum_77, Nangang_80, Nehemiah_78, Phelemich_76, Reprobate_78, Rich_78, Rinkes_79, Rita130_79, Serendipitous_79, Shenyu_79, SirJeffery_78, StinkyVeggy_77, Suigeneris_81,

Summary by start number:

Start 14:

- Found in 1 of 39 (2.6%) of genes in pham
- Manual Annotations of this start: 1 of 23
- Called 100.0% of time when present
- Phage (with cluster) where this start called: Rinkes_79 (B9),

Start 17:

- Found in 4 of 39 (10.3%) of genes in pham
- Manual Annotations of this start: 1 of 23
- Called 100.0% of time when present
- Phage (with cluster) where this start called: ForDig_82 (B6), Hosp_078 (B6), Imvubu_85 (B10), Jolie1_080 (B6),

Start 22:

- Found in 9 of 39 (23.1%) of genes in pham
- Manual Annotations of this start: 3 of 23
- Called 66.7% of time when present
- Phage (with cluster) where this start called: DigitDog_80 (B5), Nangang_80 (B5), Nehemiah_78 (B5), Phelemich_76 (B5), Reprobate_78 (B5), Serendipitous_79 (B5),

Start 23:

- Found in 7 of 39 (17.9%) of genes in pham
- Manual Annotations of this start: 5 of 23
- Called 100.0% of time when present
- Phage (with cluster) where this start called: Acadian_80 (B5), Bae_79 (B5), Donny_80 (B5), EastView9101_79 (B5), Rita130_79 (B5), SirJeffery_78 (B5), Suigeneris_81 (B5),

Start 24:

- Found in 16 of 39 (41.0%) of genes in pham
- Manual Annotations of this start: 11 of 23
- Called 100.0% of time when present
- Phage (with cluster) where this start called: Ahwei_78 (B4), Antihero_78 (B4), Austelle_80 (B4), ChrisnMich_81 (B4), Cooper_81 (B4), Epah_78 (B4),

GinPorsche_78 (B4), JAMaL_79 (B4), Magpie_77 (B4), Mudslide_80 (B4), Nigel_76 (B4), Prince_79 (B4), QueenPie_74 (B4), Stinger_78 (B4), VioletZ_82 (B4), Waleliano_79 (B4),

Start 26:

- Found in 4 of 39 (10.3%) of genes in pham
- Manual Annotations of this start: 1 of 23
- Called 25.0% of time when present
- Phage (with cluster) where this start called: Rich_78 (B5),

Start 30:

- Found in 1 of 39 (2.6%) of genes in pham
- No Manual Annotations of this start.
- Called 100.0% of time when present
- Phage (with cluster) where this start called: Shenyu_79 (B5),

Start 33:

- Found in 19 of 39 (48.7%) of genes in pham
- No Manual Annotations of this start.
- Called 10.5% of time when present
- Phage (with cluster) where this start called: KarasumaRum_77 (B5), StinkyVeggy_77 (B5),

Start 36:

- Found in 1 of 39 (2.6%) of genes in pham
- Manual Annotations of this start: 1 of 23
- Called 100.0% of time when present
- Phage (with cluster) where this start called: BrownCNA_81 (B4),

Summary by clusters:

There are 5 clusters represented in this pham: B4, B5, B6, B9, B10,

Info for manual annotations of cluster B10:

- Start number 17 was manually annotated 1 time for cluster B10.

Info for manual annotations of cluster B4:

- Start number 24 was manually annotated 11 times for cluster B4.
- Start number 36 was manually annotated 1 time for cluster B4.

Info for manual annotations of cluster B5:

- Start number 22 was manually annotated 3 times for cluster B5.
- Start number 23 was manually annotated 5 times for cluster B5.
- Start number 26 was manually annotated 1 time for cluster B5.

Info for manual annotations of cluster B9:

- Start number 14 was manually annotated 1 time for cluster B9.

Gene Information:

Gene: Acadian_80 Start: 62958, Stop: 62701, Start Num: 23

Candidate Starts for Acadian_80:

(6, 63123), (12, 63036), (Start: 23 @62958 has 5 MA's), (25, 62940), (33, 62901), (44, 62778), (45, 62763), (46, 62760), (47, 62739),

Gene: Ahwei_78 Start: 63247, Stop: 62999, Start Num: 24

Candidate Starts for Ahwei_78:

(7, 63382), (16, 63289), (20, 63262), (Start: 24 @63247 has 11 MA's), (28, 63229), (33, 63190), (37, 63145), (38, 63115), (41, 63082), (44, 63067),

Gene: Antihero_78 Start: 63182, Stop: 62934, Start Num: 24

Candidate Starts for Antihero_78:

(7, 63314), (9, 63305), (16, 63224), (20, 63197), (Start: 24 @63182 has 11 MA's), (28, 63164), (33, 63125), (37, 63080), (38, 63050), (41, 63017), (44, 63002),

Gene: Austelle_80 Start: 64860, Stop: 64612, Start Num: 24

Candidate Starts for Austelle_80:

(7, 64992), (9, 64983), (16, 64902), (20, 64875), (Start: 24 @64860 has 11 MA's), (28, 64842), (37, 64758), (38, 64728), (41, 64695), (44, 64680),

Gene: Bae_79 Start: 63594, Stop: 63337, Start Num: 23

Candidate Starts for Bae_79:

(12, 63672), (Start: 23 @63594 has 5 MA's), (25, 63576), (45, 63399), (46, 63396), (47, 63375), (48, 63360),

Gene: BrownCNA_81 Start: 64179, Stop: 64030, Start Num: 36

Candidate Starts for BrownCNA_81:

(Start: 36 @64179 has 1 MA's), (38, 64146), (41, 64113), (44, 64098),

Gene: ChrisnMich_81 Start: 63195, Stop: 62956, Start Num: 24

Candidate Starts for ChrisnMich_81:

(7, 63330), (Start: 24 @63195 has 11 MA's), (28, 63180), (41, 63039), (47, 62985),

Gene: Cooper_81 Start: 63632, Stop: 63384, Start Num: 24

Candidate Starts for Cooper_81:

(7, 63764), (20, 63647), (Start: 24 @63632 has 11 MA's), (28, 63614), (33, 63575), (38, 63500), (41, 63467),

Gene: DigitDog_80 Start: 63071, Stop: 62820, Start Num: 22

Candidate Starts for DigitDog_80:

(13, 63119), (Start: 22 @63071 has 3 MA's), (44, 62891), (47, 62852),

Gene: Donny_80 Start: 62792, Stop: 62535, Start Num: 23

Candidate Starts for Donny_80:

(12, 62870), (Start: 23 @62792 has 5 MA's), (25, 62774), (33, 62735), (44, 62612), (45, 62597), (46, 62594), (47, 62573),

Gene: EastView9101_79 Start: 62702, Stop: 62445, Start Num: 23

Candidate Starts for EastView9101_79:

(6, 62867), (12, 62780), (Start: 23 @62702 has 5 MA's), (25, 62684), (33, 62645), (44, 62522), (45, 62507), (46, 62504), (47, 62483),

Gene: Epah_78 Start: 63182, Stop: 62934, Start Num: 24

Candidate Starts for Epah_78:

(7, 63314), (9, 63305), (16, 63224), (20, 63197), (Start: 24 @63182 has 11 MA's), (28, 63164), (33, 63125), (37, 63080), (38, 63050), (41, 63017), (44, 63002),

Gene: ForDig_82 Start: 63250, Stop: 62975, Start Num: 17

Candidate Starts for ForDig_82:

(11, 63301), (Start: 17 @63250 has 1 MA's), (Start: 26 @63205 has 1 MA's), (29, 63196), (31, 63172), (32, 63169), (33, 63160), (35, 63115), (39, 63064),

Gene: GinPorsche_78 Start: 63179, Stop: 62931, Start Num: 24

Candidate Starts for GinPorsche_78:

(7, 63311), (9, 63302), (16, 63221), (20, 63194), (Start: 24 @63179 has 11 MA's), (28, 63161), (33, 63122), (37, 63077), (38, 63047), (41, 63014), (44, 62999),

Gene: Hosp_078 Start: 61272, Stop: 61000, Start Num: 17

Candidate Starts for Hosp_078:

(Start: 17 @61272 has 1 MA's), (Start: 26 @61227 has 1 MA's), (27, 61224), (29, 61218), (32, 61191), (33, 61182), (42, 61074),

Gene: Imvubu_85 Start: 64146, Stop: 63865, Start Num: 17

Candidate Starts for Imvubu_85:

(1, 64662), (2, 64644), (3, 64635), (8, 64239), (Start: 17 @64146 has 1 MA's), (18, 64143), (21, 64122), (46, 63915), (48, 63879),

Gene: JAMaL_79 Start: 63728, Stop: 63486, Start Num: 24

Candidate Starts for JAMaL_79:

(7, 63860), (9, 63851), (16, 63770), (20, 63743), (Start: 24 @63728 has 11 MA's), (28, 63716), (38, 63602), (41, 63569), (44, 63554),

Gene: Jolie1_080 Start: 63299, Stop: 63027, Start Num: 17

Candidate Starts for Jolie1_080:

(11, 63353), (Start: 17 @63299 has 1 MA's), (Start: 26 @63254 has 1 MA's), (27, 63251), (29, 63245), (32, 63218), (33, 63209), (42, 63101),

Gene: KarasumaRum_77 Start: 62535, Stop: 62341, Start Num: 33

Candidate Starts for KarasumaRum_77:

(Start: 22 @62592 has 3 MA's), (33, 62535), (44, 62412),

Gene: Magpie_77 Start: 63847, Stop: 63605, Start Num: 24

Candidate Starts for Magpie_77:

(7, 63982), (16, 63889), (20, 63862), (Start: 24 @63847 has 11 MA's), (28, 63835), (38, 63721), (41, 63688), (44, 63673),

Gene: Mudslide_80 Start: 64394, Stop: 64152, Start Num: 24

Candidate Starts for Mudslide_80:

(7, 64526), (16, 64436), (20, 64409), (Start: 24 @64394 has 11 MA's), (28, 64382), (37, 64298), (38, 64268), (41, 64235), (44, 64220),

Gene: Nangang_80 Start: 63283, Stop: 63032, Start Num: 22

Candidate Starts for Nangang_80:

(Start: 22 @63283 has 3 MA's), (44, 63103), (47, 63064),

Gene: Nehemiah_78 Start: 62675, Stop: 62424, Start Num: 22

Candidate Starts for Nehemiah_78:

(15, 62705), (19, 62690), (Start: 22 @62675 has 3 MA's), (25, 62657), (40, 62516),

Gene: Nigel_76 Start: 62547, Stop: 62299, Start Num: 24

Candidate Starts for Nigel_76:

(16, 62589), (20, 62562), (Start: 24 @62547 has 11 MA's), (28, 62529), (33, 62490), (37, 62445), (38, 62415), (41, 62382), (44, 62367),

Gene: Phelemich_76 Start: 62744, Stop: 62493, Start Num: 22

Candidate Starts for Phelemich_76:

(19, 62759), (Start: 22 @62744 has 3 MA's), (25, 62726), (40, 62585), (44, 62564),

Gene: Prince_79 Start: 64261, Stop: 64013, Start Num: 24

Candidate Starts for Prince_79:

(7, 64396), (16, 64303), (20, 64276), (Start: 24 @64261 has 11 MA's), (28, 64243), (34, 64183), (37, 64159), (38, 64129), (41, 64096), (44, 64081),

Gene: QueenPie_74 Start: 62927, Stop: 62679, Start Num: 24

Candidate Starts for QueenPie_74:

(7, 63059), (16, 62969), (20, 62942), (Start: 24 @62927 has 11 MA's), (33, 62870), (37, 62825), (38, 62795), (41, 62762), (44, 62747),

Gene: Reprobate_78 Start: 62749, Stop: 62498, Start Num: 22

Candidate Starts for Reprobate_78:

(19, 62764), (Start: 22 @62749 has 3 MA's), (25, 62731), (40, 62590), (44, 62569),

Gene: Rich_78 Start: 63621, Stop: 63382, Start Num: 26

Candidate Starts for Rich_78:

(Start: 26 @63621 has 1 MA's), (45, 63444), (46, 63441), (47, 63420), (48, 63405),

Gene: Rinkes_79 Start: 64163, Stop: 63879, Start Num: 14

Candidate Starts for Rinkes_79:

(4, 64562), (5, 64478), (10, 64220), (Start: 14 @64163 has 1 MA's), (29, 64106), (40, 63968), (43, 63956), (45, 63932),

Gene: Rita130_79 Start: 62932, Stop: 62675, Start Num: 23

Candidate Starts for Rita130_79:

(6, 63097), (12, 63010), (Start: 23 @62932 has 5 MA's), (25, 62914), (33, 62875), (44, 62752), (45, 62737), (46, 62734), (47, 62713),

Gene: Serendipitous_79 Start: 62642, Stop: 62391, Start Num: 22

Candidate Starts for Serendipitous_79:

(Start: 22 @62642 has 3 MA's), (25, 62624), (34, 62564), (40, 62483), (44, 62462), (47, 62423),

Gene: Shenyu_79 Start: 63027, Stop: 62812, Start Num: 30

Candidate Starts for Shenyu_79:

(13, 63129), (Start: 22 @63081 has 3 MA's), (30, 63027), (44, 62883), (47, 62844),

Gene: SirJeffery_78 Start: 62742, Stop: 62485, Start Num: 23

Candidate Starts for SirJeffery_78:

(12, 62820), (Start: 23 @62742 has 5 MA's), (25, 62724), (33, 62685), (44, 62562), (45, 62547), (46, 62544), (47, 62523),

Gene: Stinger_78 Start: 62665, Stop: 62423, Start Num: 24

Candidate Starts for Stinger_78:

(7, 62797), (20, 62680), (Start: 24 @62665 has 11 MA's), (28, 62647), (33, 62608), (37, 62563), (41, 62506),

Gene: StinkyVeggy_77 Start: 62535, Stop: 62341, Start Num: 33

Candidate Starts for StinkyVeggy_77:

(Start: 22 @62592 has 3 MA's), (33, 62535), (44, 62412),

Gene: Suigeneris_81 Start: 63180, Stop: 62923, Start Num: 23

Candidate Starts for Suigeneris_81:

(6, 63345), (12, 63258), (Start: 23 @63180 has 5 MA's), (25, 63162), (33, 63123), (44, 63000), (45, 62985), (46, 62982), (47, 62961),

Gene: VioletZ_82 Start: 64351, Stop: 64109, Start Num: 24

Candidate Starts for VioletZ_82:

(7, 64486), (16, 64393), (20, 64366), (Start: 24 @64351 has 11 MA's), (28, 64339), (38, 64225), (41, 64192), (44, 64177),

Gene: Waleliano_79 Start: 64025, Stop: 63783, Start Num: 24

Candidate Starts for Waleliano_79:

(7, 64157), (16, 64067), (20, 64040), (Start: 24 @64025 has 11 MA's), (28, 64013), (38, 63899), (41, 63866), (44, 63851),