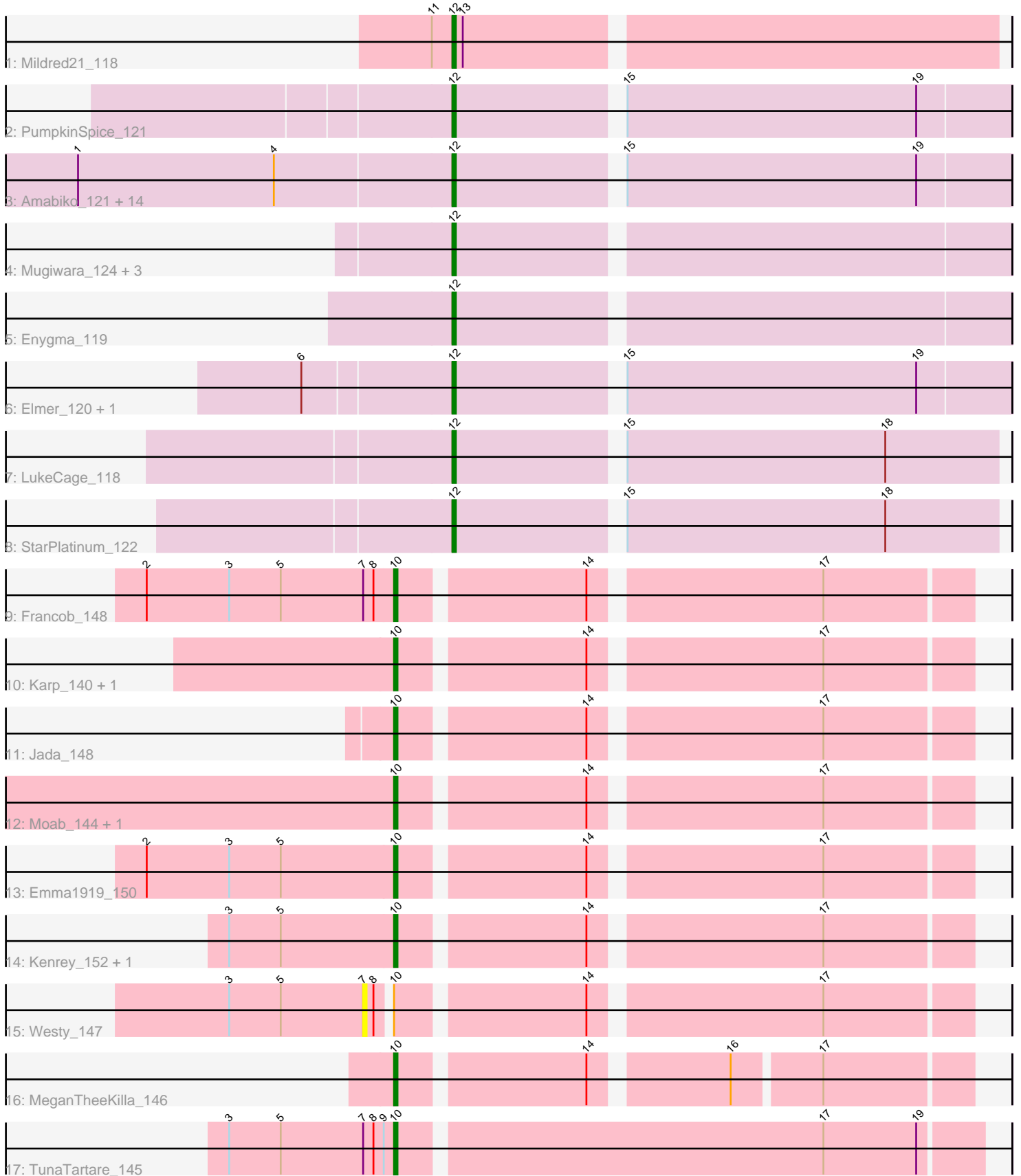


Pham 216345



Note: Tracks are now grouped by subcluster and scaled. Switching in subcluster is indicated by changes in track color. Track scale is now set by default to display the region 30 bp upstream of start 1 to 30 bp downstream of the last possible start. If this default region is judged to be packed too tightly with annotated starts, the track will be further scaled to only show that region of the ORF with annotated starts. This action will be indicated by adding "Zoomed" to the title. For starts, yellow indicates the location of called starts comprised solely of Glimmer/GeneMark auto-annotations, green indicates the location of called starts with at least 1 manual gene annotation.

Pham 216345 Report

This analysis was run 02/22/25 on database version 588.

Pham number 216345 has 38 members, 5 are drafts.

Phages represented in each track:

- Track 1 : Mildred21_118
- Track 2 : PumpkinSpice_121
- Track 3 : Amabiko_121, Rikishi_124, Spelly_121, Quaran19_120, Wipeout_116, Karimac_120, Gibbi_126, Bordeaux_119, Starbow_119, Jollison_120, Birchlyn_118, Battuta_119, SaltySpittoon_120, CeilingFan_120, TomSawyer_121
- Track 4 : Mugiwara_124, Anedea_114, Bmoc_116, Riptide_113
- Track 5 : Enygma_119
- Track 6 : Elmer_120, Wofford_116
- Track 7 : LukeCage_118
- Track 8 : StarPlatinum_122
- Track 9 : Francob_148
- Track 10 : Karp_140, Belfort_145
- Track 11 : Jada_148
- Track 12 : Moab_144, Patelgo_146
- Track 13 : Emma1919_150
- Track 14 : Kenrey_152, Phredrick_149
- Track 15 : Westy_147
- Track 16 : MeganTheeKilla_146
- Track 17 : TunaTartare_145

Summary of Final Annotations (See graph section above for start numbers):

The start number called the most often in the published annotations is 12, it was called in 22 of the 33 non-draft genes in the pham.

Genes that call this "Most Annotated" start:

- Amabiko_121, Anedea_114, Battuta_119, Birchlyn_118, Bmoc_116, Bordeaux_119, CeilingFan_120, Elmer_120, Enygma_119, Gibbi_126, Jollison_120, Karimac_120, LukeCage_118, Mildred21_118, Mugiwara_124, PumpkinSpice_121, Quaran19_120, Rikishi_124, Riptide_113, SaltySpittoon_120, Spelly_121, StarPlatinum_122, Starbow_119, TomSawyer_121, Wipeout_116, Wofford_116,

Genes that have the "Most Annotated" start but do not call it:

-

Genes that do not have the "Most Annotated" start:

- Belfort_145, Emma1919_150, Francob_148, Jada_148, Karp_140, Kenrey_152, MeganTheeKilla_146, Moab_144, Patelgo_146, Phredrick_149, TunaTartare_145, Westy_147,

Summary by start number:

Start 7:

- Found in 3 of 38 (7.9%) of genes in pham
- No Manual Annotations of this start.
- Called 33.3% of time when present
- Phage (with cluster) where this start called: Westy_147 (BK1),

Start 10:

- Found in 12 of 38 (31.6%) of genes in pham
- Manual Annotations of this start: 11 of 33
- Called 91.7% of time when present
- Phage (with cluster) where this start called: Belfort_145 (BK1), Emma1919_150 (BK1), Francob_148 (BK1), Jada_148 (BK1), Karp_140 (BK1), Kenrey_152 (BK1), MeganTheeKilla_146 (BK1), Moab_144 (BK1), Patelgo_146 (BK1), Phredrick_149 (BK1), TunaTartare_145 (BK1),

Start 12:

- Found in 26 of 38 (68.4%) of genes in pham
- Manual Annotations of this start: 22 of 33
- Called 100.0% of time when present
- Phage (with cluster) where this start called: Amabiko_121 (BE2), Anedea_114 (BE1), Battuta_119 (BE2), Birchlyn_118 (BE2), Bmoc_116 (BE1), Bordeaux_119 (BE2), CeilingFan_120 (BE2), Elmer_120 (BE2), Enygma_119 (BE2), Gibbi_126 (BE2), Jollison_120 (BE2), Karimac_120 (BE2), LukeCage_118 (BE2), Mildred21_118 (BE1), Mugiwara_124 (BE2), PumpkinSpice_121 (BE2), Quaran19_120 (BE2), Rikishi_124 (BE2), Riptide_113 (BE1), SaltySpittoon_120 (BE2), Spelly_121 (BE2), StarPlatinum_122 (BE2), Starbow_119 (BE2), TomSawyer_121 (BE2), Wipeout_116 (BE2), Wofford_116 (BE2),

Summary by clusters:

There are 3 clusters represented in this pham: BE2, BE1, BK1,

Info for manual annotations of cluster BE1:

- Start number 12 was manually annotated 3 times for cluster BE1.

Info for manual annotations of cluster BE2:

- Start number 12 was manually annotated 19 times for cluster BE2.

Info for manual annotations of cluster BK1:

- Start number 10 was manually annotated 11 times for cluster BK1.

Gene Information:

Gene: Amabiko_121 Start: 77937, Stop: 78092, Start Num: 12
Candidate Starts for Amabiko_121:
(1, 77835), (4, 77892), (Start: 12 @77937 has 22 MA's), (15, 77982), (19, 78066),

Gene: Anedea_114 Start: 76495, Stop: 76650, Start Num: 12
Candidate Starts for Anedea_114:
(Start: 12 @76495 has 22 MA's),

Gene: Battuta_119 Start: 77911, Stop: 78066, Start Num: 12
Candidate Starts for Battuta_119:
(1, 77809), (4, 77866), (Start: 12 @77911 has 22 MA's), (15, 77956), (19, 78040),

Gene: Belfort_145 Start: 82737, Stop: 82892, Start Num: 10
Candidate Starts for Belfort_145:
(Start: 10 @82737 has 11 MA's), (14, 82788), (17, 82851),

Gene: Birchlyn_118 Start: 75797, Stop: 75952, Start Num: 12
Candidate Starts for Birchlyn_118:
(1, 75695), (4, 75752), (Start: 12 @75797 has 22 MA's), (15, 75842), (19, 75926),

Gene: Bmoc_116 Start: 77106, Stop: 77258, Start Num: 12
Candidate Starts for Bmoc_116:
(Start: 12 @77106 has 22 MA's),

Gene: Bordeaux_119 Start: 78066, Stop: 78221, Start Num: 12
Candidate Starts for Bordeaux_119:
(1, 77964), (4, 78021), (Start: 12 @78066 has 22 MA's), (15, 78111), (19, 78195),

Gene: CeilingFan_120 Start: 77829, Stop: 77984, Start Num: 12
Candidate Starts for CeilingFan_120:
(1, 77727), (4, 77784), (Start: 12 @77829 has 22 MA's), (15, 77874), (19, 77958),

Gene: Elmer_120 Start: 79140, Stop: 79295, Start Num: 12
Candidate Starts for Elmer_120:
(6, 79104), (Start: 12 @79140 has 22 MA's), (15, 79185), (19, 79269),

Gene: Emma1919_150 Start: 82354, Stop: 82509, Start Num: 10
Candidate Starts for Emma1919_150:
(2, 82285), (3, 82309), (5, 82324), (Start: 10 @82354 has 11 MA's), (14, 82405), (17, 82468),

Gene: Enygma_119 Start: 79456, Stop: 79611, Start Num: 12
Candidate Starts for Enygma_119:
(Start: 12 @79456 has 22 MA's),

Gene: Francob_148 Start: 82862, Stop: 83017, Start Num: 10
Candidate Starts for Francob_148:
(2, 82793), (3, 82817), (5, 82832), (7, 82856), (8, 82859), (Start: 10 @82862 has 11 MA's), (14, 82913),
(17, 82976),

Gene: Gibbi_126 Start: 78049, Stop: 78204, Start Num: 12
Candidate Starts for Gibbi_126:
(1, 77947), (4, 78004), (Start: 12 @78049 has 22 MA's), (15, 78094), (19, 78178),

Gene: Jada_148 Start: 82145, Stop: 82300, Start Num: 10

Candidate Starts for Jada_148:

(Start: 10 @82145 has 11 MA's), (14, 82196), (17, 82259),

Gene: Jollison_120 Start: 77894, Stop: 78049, Start Num: 12

Candidate Starts for Jollison_120:

(1, 77792), (4, 77849), (Start: 12 @77894 has 22 MA's), (15, 77939), (19, 78023),

Gene: Karimac_120 Start: 78175, Stop: 78330, Start Num: 12

Candidate Starts for Karimac_120:

(1, 78073), (4, 78130), (Start: 12 @78175 has 22 MA's), (15, 78220), (19, 78304),

Gene: Karp_140 Start: 82164, Stop: 82319, Start Num: 10

Candidate Starts for Karp_140:

(Start: 10 @82164 has 11 MA's), (14, 82215), (17, 82278),

Gene: Kenrey_152 Start: 83476, Stop: 83631, Start Num: 10

Candidate Starts for Kenrey_152:

(3, 83431), (5, 83446), (Start: 10 @83476 has 11 MA's), (14, 83527), (17, 83590),

Gene: LukeCage_118 Start: 77847, Stop: 77999, Start Num: 12

Candidate Starts for LukeCage_118:

(Start: 12 @77847 has 22 MA's), (15, 77892), (18, 77967),

Gene: MeganTheeKilla_146 Start: 81670, Stop: 81822, Start Num: 10

Candidate Starts for MeganTheeKilla_146:

(Start: 10 @81670 has 11 MA's), (14, 81721), (16, 81757), (17, 81781),

Gene: Mildred21_118 Start: 77407, Stop: 77559, Start Num: 12

Candidate Starts for Mildred21_118:

(11, 77401), (Start: 12 @77407 has 22 MA's), (13, 77410),

Gene: Moab_144 Start: 83836, Stop: 83991, Start Num: 10

Candidate Starts for Moab_144:

(Start: 10 @83836 has 11 MA's), (14, 83887), (17, 83950),

Gene: Mugiwara_124 Start: 78535, Stop: 78690, Start Num: 12

Candidate Starts for Mugiwara_124:

(Start: 12 @78535 has 22 MA's),

Gene: Patelgo_146 Start: 84528, Stop: 84683, Start Num: 10

Candidate Starts for Patelgo_146:

(Start: 10 @84528 has 11 MA's), (14, 84579), (17, 84642),

Gene: Phredrick_149 Start: 81811, Stop: 81966, Start Num: 10

Candidate Starts for Phredrick_149:

(3, 81766), (5, 81781), (Start: 10 @81811 has 11 MA's), (14, 81862), (17, 81925),

Gene: PumpkinSpice_121 Start: 78501, Stop: 78656, Start Num: 12

Candidate Starts for PumpkinSpice_121:

(Start: 12 @78501 has 22 MA's), (15, 78546), (19, 78630),

Gene: Quaran19_120 Start: 77928, Stop: 78083, Start Num: 12

Candidate Starts for Quaran19_120:

(1, 77826), (4, 77883), (Start: 12 @77928 has 22 MA's), (15, 77973), (19, 78057),

Gene: Rikishi_124 Start: 77843, Stop: 77998, Start Num: 12

Candidate Starts for Rikishi_124:

(1, 77741), (4, 77798), (Start: 12 @77843 has 22 MA's), (15, 77888), (19, 77972),

Gene: Riptide_113 Start: 75931, Stop: 76086, Start Num: 12

Candidate Starts for Riptide_113:

(Start: 12 @75931 has 22 MA's),

Gene: SaltySpittoon_120 Start: 77940, Stop: 78095, Start Num: 12

Candidate Starts for SaltySpittoon_120:

(1, 77838), (4, 77895), (Start: 12 @77940 has 22 MA's), (15, 77985), (19, 78069),

Gene: Spelly_121 Start: 77892, Stop: 78047, Start Num: 12

Candidate Starts for Spelly_121:

(1, 77790), (4, 77847), (Start: 12 @77892 has 22 MA's), (15, 77937), (19, 78021),

Gene: StarPlatinum_122 Start: 78906, Stop: 79058, Start Num: 12

Candidate Starts for StarPlatinum_122:

(Start: 12 @78906 has 22 MA's), (15, 78951), (18, 79026),

Gene: Starbow_119 Start: 77913, Stop: 78068, Start Num: 12

Candidate Starts for Starbow_119:

(1, 77811), (4, 77868), (Start: 12 @77913 has 22 MA's), (15, 77958), (19, 78042),

Gene: TomSawyer_121 Start: 77958, Stop: 78113, Start Num: 12

Candidate Starts for TomSawyer_121:

(1, 77856), (4, 77913), (Start: 12 @77958 has 22 MA's), (15, 78003), (19, 78087),

Gene: TunaTartare_145 Start: 84538, Stop: 84702, Start Num: 10

Candidate Starts for TunaTartare_145:

(3, 84490), (5, 84505), (7, 84529), (8, 84532), (9, 84535), (Start: 10 @84538 has 11 MA's), (17, 84658), (19, 84685),

Gene: Westy_147 Start: 83690, Stop: 83851, Start Num: 7

Candidate Starts for Westy_147:

(3, 83651), (5, 83666), (7, 83690), (8, 83693), (Start: 10 @83696 has 11 MA's), (14, 83747), (17, 83810),

Gene: Wipeout_116 Start: 78282, Stop: 78437, Start Num: 12

Candidate Starts for Wipeout_116:

(1, 78180), (4, 78237), (Start: 12 @78282 has 22 MA's), (15, 78327), (19, 78411),

Gene: Wofford_116 Start: 79104, Stop: 79259, Start Num: 12

Candidate Starts for Wofford_116:

(6, 79068), (Start: 12 @79104 has 22 MA's), (15, 79149), (19, 79233),