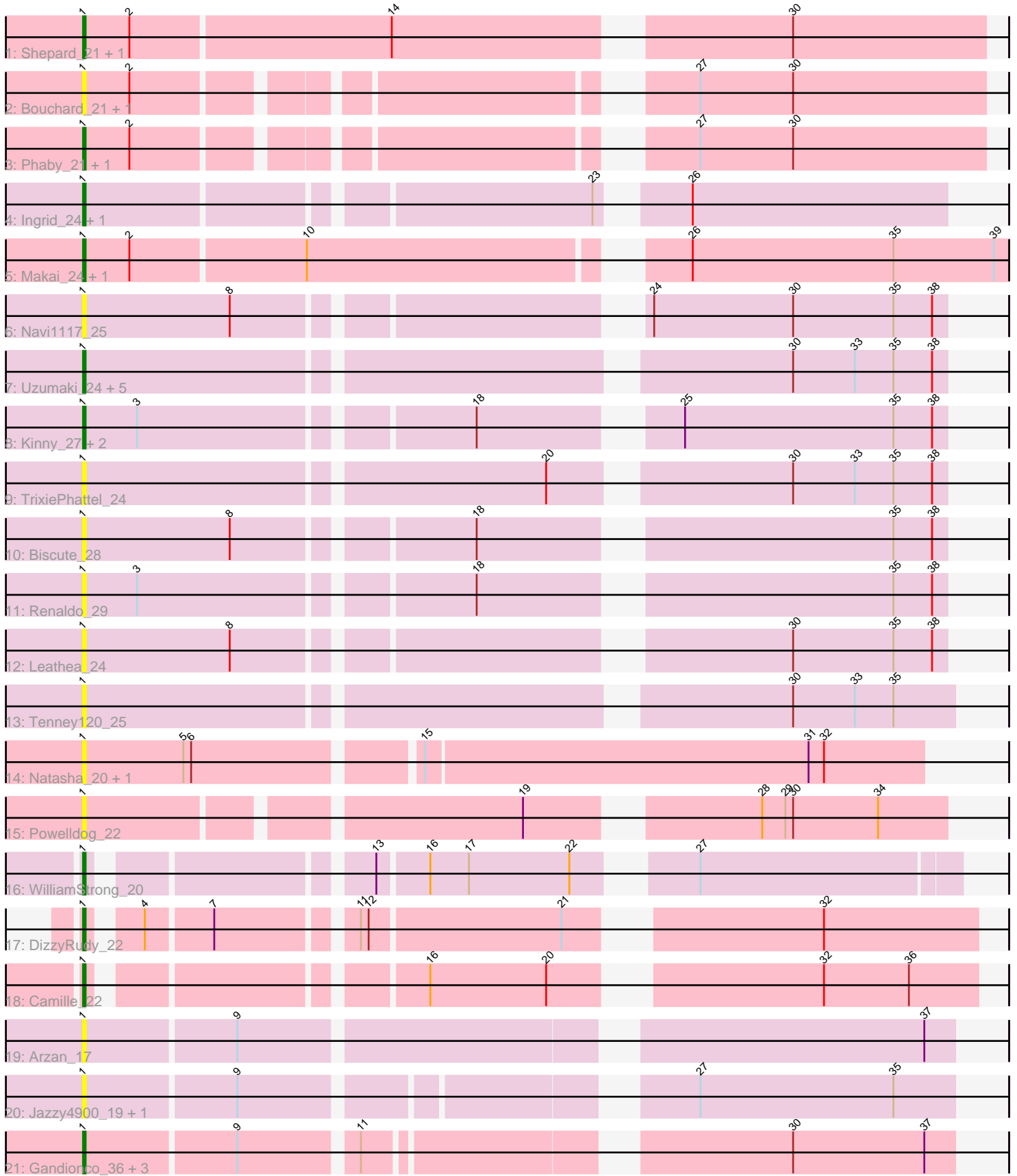


Pham 216346



Note: Tracks are now grouped by subcluster and scaled. Switching in subcluster is indicated by changes in track color. Track scale is now set by default to display the region 30 bp upstream of start 1 to 30 bp downstream of the last possible start. If this default region is judged to be packed too tightly with annotated starts, the track will be further scaled to only show that region of the ORF with annotated starts. This action will be indicated by adding "Zoomed" to the title. For starts, yellow indicates the location of called starts comprised solely of Glimmer/GeneMark auto-annotations, green indicates the location of called starts with at least 1 manual gene annotation.

Pham 216346 Report

This analysis was run 02/22/25 on database version 588.

Pham number 216346 has 38 members, 20 are drafts.

Phages represented in each track:

- Track 1 : Shepard_21, LilHuddy_21
- Track 2 : Bouchard_21, Chlochlo_21
- Track 3 : Phaby_21, Tokki_21
- Track 4 : Ingrid_24, Loretta_24
- Track 5 : Makai_24, Truckee_23
- Track 6 : Navi1117_25
- Track 7 : Uzumaki_24, Phaila_23, GantcherGoblin_23, Argan_23, KevinMinion_24, Zeina_24
- Track 8 : Kinny_27, BarbieDoll_27, Lewando_27
- Track 9 : TrixiePhattel_24
- Track 10 : Biscute_28
- Track 11 : Renaldo_29
- Track 12 : Leathea_24
- Track 13 : Tenney120_25
- Track 14 : Natasha_20, RustyBoy_20
- Track 15 : PowellDog_22
- Track 16 : WilliamStrong_20
- Track 17 : DizzyRudy_22
- Track 18 : Camille_22
- Track 19 : Arzan_17
- Track 20 : Jazzy4900_19, Sunny4976_18
- Track 21 : Gandionco_36, Paella_35, Qui_35, Elver_34

Summary of Final Annotations (See graph section above for start numbers):

The start number called the most often in the published annotations is 1, it was called in 18 of the 18 non-draft genes in the pham.

Genes that call this "Most Annotated" start:

- Argan_23, Arzan_17, BarbieDoll_27, Biscute_28, Bouchard_21, Camille_22, Chlochlo_21, DizzyRudy_22, Elver_34, Gandionco_36, GantcherGoblin_23, Ingrid_24, Jazzy4900_19, KevinMinion_24, Kinny_27, Leathea_24, Lewando_27, LilHuddy_21, Loretta_24, Makai_24, Natasha_20, Navi1117_25, Paella_35, Phaby_21, Phaila_23, PowellDog_22, Qui_35, Renaldo_29, RustyBoy_20,

Shepard_21, Sunny4976_18, Tenney120_25, Tokki_21, TrixiePhattel_24, Truckee_23, Uzumaki_24, WilliamStrong_20, Zeina_24,

Genes that have the "Most Annotated" start but do not call it:

-

Genes that do not have the "Most Annotated" start:

-

Summary by start number:

Start 1:

- Found in 38 of 38 (100.0%) of genes in pham
- Manual Annotations of this start: 18 of 18
- Called 100.0% of time when present
- Phage (with cluster) where this start called: Argan_23 (AU6), Arzan_17 (FI), BarbieDoll_27 (AU6), Biscute_28 (AU6), Bouchard_21 (AU2), Camille_22 (EL), Chlochlo_21 (AU2), DizzyRudy_22 (EL), Elver_34 (FK), Gandionco_36 (FK), GantcherGoblin_23 (AU6), Ingrid_24 (AU3), Jazzy4900_19 (FI), KevinMinion_24 (AU6), Kinny_27 (AU6), Leathea_24 (AU6), Lewando_27 (AU6), LilHuddy_21 (AU2), Loretta_24 (AU3), Makai_24 (AU5), Natasha_20 (AW), Navi1117_25 (AU6), Paella_35 (FK), Phaby_21 (AU2), Phaila_23 (AU6), PowellDog_22 (AW), Qui_35 (FK), Renaldo_29 (AU6), RustyBoy_20 (AW), Shepard_21 (AU2), Sunny4976_18 (FI), Tenney120_25 (AU6), Tokki_21 (AU2), TrixiePhattel_24 (AU6), Truckee_23 (AU5), Uzumaki_24 (AU6), WilliamStrong_20 (EA6), Zeina_24 (AU6),

Summary by clusters:

There are 9 clusters represented in this pham: EL, AU3, AU2, AU5, AW, AU6, FI, FK, EA6,

Info for manual annotations of cluster AU2:

- Start number 1 was manually annotated 4 times for cluster AU2.

Info for manual annotations of cluster AU3:

- Start number 1 was manually annotated 2 times for cluster AU3.

Info for manual annotations of cluster AU5:

- Start number 1 was manually annotated 2 times for cluster AU5.

Info for manual annotations of cluster AU6:

- Start number 1 was manually annotated 5 times for cluster AU6.

Info for manual annotations of cluster EA6:

- Start number 1 was manually annotated 1 time for cluster EA6.

Info for manual annotations of cluster EL:

- Start number 1 was manually annotated 2 times for cluster EL.

Info for manual annotations of cluster FK:

- Start number 1 was manually annotated 2 times for cluster FK.

Gene Information:

Gene: Argan_23 Start: 18250, Stop: 18561, Start Num: 1

Candidate Starts for Argan_23:

(Start: 1 @18250 has 18 MA's), (30, 18502), (33, 18526), (35, 18541), (38, 18556),

Gene: Arzan_17 Start: 13586, Stop: 13897, Start Num: 1

Candidate Starts for Arzan_17:

(Start: 1 @13586 has 18 MA's), (9, 13643), (37, 13886),

Gene: BarbieDoll_27 Start: 20223, Stop: 20528, Start Num: 1

Candidate Starts for BarbieDoll_27:

(Start: 1 @20223 has 18 MA's), (3, 20244), (18, 20364), (25, 20427), (35, 20508), (38, 20523),

Gene: Biscute_28 Start: 19871, Stop: 20176, Start Num: 1

Candidate Starts for Biscute_28:

(Start: 1 @19871 has 18 MA's), (8, 19928), (18, 20012), (35, 20156), (38, 20171),

Gene: Bouchard_21 Start: 15852, Stop: 16163, Start Num: 1

Candidate Starts for Bouchard_21:

(Start: 1 @15852 has 18 MA's), (2, 15870), (27, 16053), (30, 16089),

Gene: Camille_22 Start: 15564, Stop: 15866, Start Num: 1

Candidate Starts for Camille_22:

(Start: 1 @15564 has 18 MA's), (16, 15675), (20, 15720), (32, 15807), (36, 15840),

Gene: Chlochlo_21 Start: 15881, Stop: 16192, Start Num: 1

Candidate Starts for Chlochlo_21:

(Start: 1 @15881 has 18 MA's), (2, 15899), (27, 16082), (30, 16118),

Gene: DizzyRudy_22 Start: 16175, Stop: 16477, Start Num: 1

Candidate Starts for DizzyRudy_22:

(Start: 1 @16175 has 18 MA's), (4, 16190), (7, 16214), (11, 16262), (12, 16265), (21, 16337), (32, 16418),

Gene: Elver_34 Start: 24623, Stop: 24928, Start Num: 1

Candidate Starts for Elver_34:

(Start: 1 @24623 has 18 MA's), (9, 24680), (11, 24722), (30, 24866), (37, 24917),

Gene: Gandionco_36 Start: 25145, Stop: 25450, Start Num: 1

Candidate Starts for Gandionco_36:

(Start: 1 @25145 has 18 MA's), (9, 25202), (11, 25244), (30, 25388), (37, 25439),

Gene: GantcherGoblin_23 Start: 18289, Stop: 18600, Start Num: 1

Candidate Starts for GantcherGoblin_23:

(Start: 1 @18289 has 18 MA's), (30, 18541), (33, 18565), (35, 18580), (38, 18595),

Gene: Ingrid_24 Start: 19170, Stop: 19475, Start Num: 1

Candidate Starts for Ingrid_24:

(Start: 1 @19170 has 18 MA's), (23, 19353), (26, 19377),

Gene: Jazzy4900_19 Start: 13619, Stop: 13924, Start Num: 1
Candidate Starts for Jazzy4900_19:
(Start: 1 @13619 has 18 MA's), (9, 13676), (27, 13826), (35, 13901),

Gene: KevinMinion_24 Start: 19383, Stop: 19694, Start Num: 1
Candidate Starts for KevinMinion_24:
(Start: 1 @19383 has 18 MA's), (30, 19635), (33, 19659), (35, 19674), (38, 19689),

Gene: Kinny_27 Start: 20136, Stop: 20441, Start Num: 1
Candidate Starts for Kinny_27:
(Start: 1 @20136 has 18 MA's), (3, 20157), (18, 20277), (25, 20340), (35, 20421), (38, 20436),

Gene: Leathea_24 Start: 18272, Stop: 18577, Start Num: 1
Candidate Starts for Leathea_24:
(Start: 1 @18272 has 18 MA's), (8, 18329), (30, 18518), (35, 18557), (38, 18572),

Gene: Lewando_27 Start: 20205, Stop: 20510, Start Num: 1
Candidate Starts for Lewando_27:
(Start: 1 @20205 has 18 MA's), (3, 20226), (18, 20346), (25, 20409), (35, 20490), (38, 20505),

Gene: LilHuddy_21 Start: 15875, Stop: 16204, Start Num: 1
Candidate Starts for LilHuddy_21:
(Start: 1 @15875 has 18 MA's), (2, 15893), (14, 15992), (30, 16130),

Gene: Loretta_24 Start: 19170, Stop: 19475, Start Num: 1
Candidate Starts for Loretta_24:
(Start: 1 @19170 has 18 MA's), (23, 19353), (26, 19377),

Gene: Makai_24 Start: 19380, Stop: 19715, Start Num: 1
Candidate Starts for Makai_24:
(Start: 1 @19380 has 18 MA's), (2, 19398), (10, 19464), (26, 19593), (35, 19671), (39, 19710),

Gene: Natasha_20 Start: 15947, Stop: 16261, Start Num: 1
Candidate Starts for Natasha_20:
(Start: 1 @15947 has 18 MA's), (5, 15986), (6, 15989), (15, 16070), (31, 16217), (32, 16223),

Gene: Navi1117_25 Start: 18540, Stop: 18845, Start Num: 1
Candidate Starts for Navi1117_25:
(Start: 1 @18540 has 18 MA's), (8, 18597), (24, 18732), (30, 18786), (35, 18825), (38, 18840),

Gene: Paella_35 Start: 24625, Stop: 24930, Start Num: 1
Candidate Starts for Paella_35:
(Start: 1 @24625 has 18 MA's), (9, 24682), (11, 24724), (30, 24868), (37, 24919),

Gene: Phaby_21 Start: 15846, Stop: 16157, Start Num: 1
Candidate Starts for Phaby_21:
(Start: 1 @15846 has 18 MA's), (2, 15864), (27, 16047), (30, 16083),

Gene: Phaila_23 Start: 17867, Stop: 18178, Start Num: 1
Candidate Starts for Phaila_23:
(Start: 1 @17867 has 18 MA's), (30, 18119), (33, 18143), (35, 18158), (38, 18173),

Gene: Powelldog_22 Start: 16306, Stop: 16608, Start Num: 1
Candidate Starts for Powelldog_22:
(Start: 1 @16306 has 18 MA's), (19, 16462), (28, 16537), (29, 16546), (30, 16549), (34, 16582),

Gene: Qui_35 Start: 24625, Stop: 24930, Start Num: 1
Candidate Starts for Qui_35:
(Start: 1 @24625 has 18 MA's), (9, 24682), (11, 24724), (30, 24868), (37, 24919),

Gene: Renaldo_29 Start: 20214, Stop: 20519, Start Num: 1
Candidate Starts for Renaldo_29:
(Start: 1 @20214 has 18 MA's), (3, 20235), (18, 20355), (35, 20499), (38, 20514),

Gene: RustyBoy_20 Start: 15947, Stop: 16243, Start Num: 1
Candidate Starts for RustyBoy_20:
(Start: 1 @15947 has 18 MA's), (5, 15986), (6, 15989), (15, 16070), (31, 16199), (32, 16205),

Gene: Shepard_21 Start: 15872, Stop: 16201, Start Num: 1
Candidate Starts for Shepard_21:
(Start: 1 @15872 has 18 MA's), (2, 15890), (14, 15989), (30, 16127),

Gene: Sunny4976_18 Start: 13619, Stop: 13924, Start Num: 1
Candidate Starts for Sunny4976_18:
(Start: 1 @13619 has 18 MA's), (9, 13676), (27, 13826), (35, 13901),

Gene: Tenney120_25 Start: 18575, Stop: 18889, Start Num: 1
Candidate Starts for Tenney120_25:
(Start: 1 @18575 has 18 MA's), (30, 18827), (33, 18851), (35, 18866),

Gene: Tokki_21 Start: 15896, Stop: 16207, Start Num: 1
Candidate Starts for Tokki_21:
(Start: 1 @15896 has 18 MA's), (2, 15914), (27, 16097), (30, 16133),

Gene: TrixiePhattel_24 Start: 18491, Stop: 18802, Start Num: 1
Candidate Starts for TrixiePhattel_24:
(Start: 1 @18491 has 18 MA's), (20, 18662), (30, 18743), (33, 18767), (35, 18782), (38, 18797),

Gene: Truckee_23 Start: 19425, Stop: 19760, Start Num: 1
Candidate Starts for Truckee_23:
(Start: 1 @19425 has 18 MA's), (2, 19443), (10, 19509), (26, 19638), (35, 19716), (39, 19755),

Gene: Uzumaki_24 Start: 19108, Stop: 19419, Start Num: 1
Candidate Starts for Uzumaki_24:
(Start: 1 @19108 has 18 MA's), (30, 19360), (33, 19384), (35, 19399), (38, 19414),

Gene: WilliamStrong_20 Start: 17840, Stop: 18136, Start Num: 1
Candidate Starts for WilliamStrong_20:
(Start: 1 @17840 has 18 MA's), (13, 17933), (16, 17951), (17, 17966), (22, 18005), (27, 18038),

Gene: Zeina_24 Start: 18489, Stop: 18800, Start Num: 1
Candidate Starts for Zeina_24:
(Start: 1 @18489 has 18 MA's), (30, 18741), (33, 18765), (35, 18780), (38, 18795),