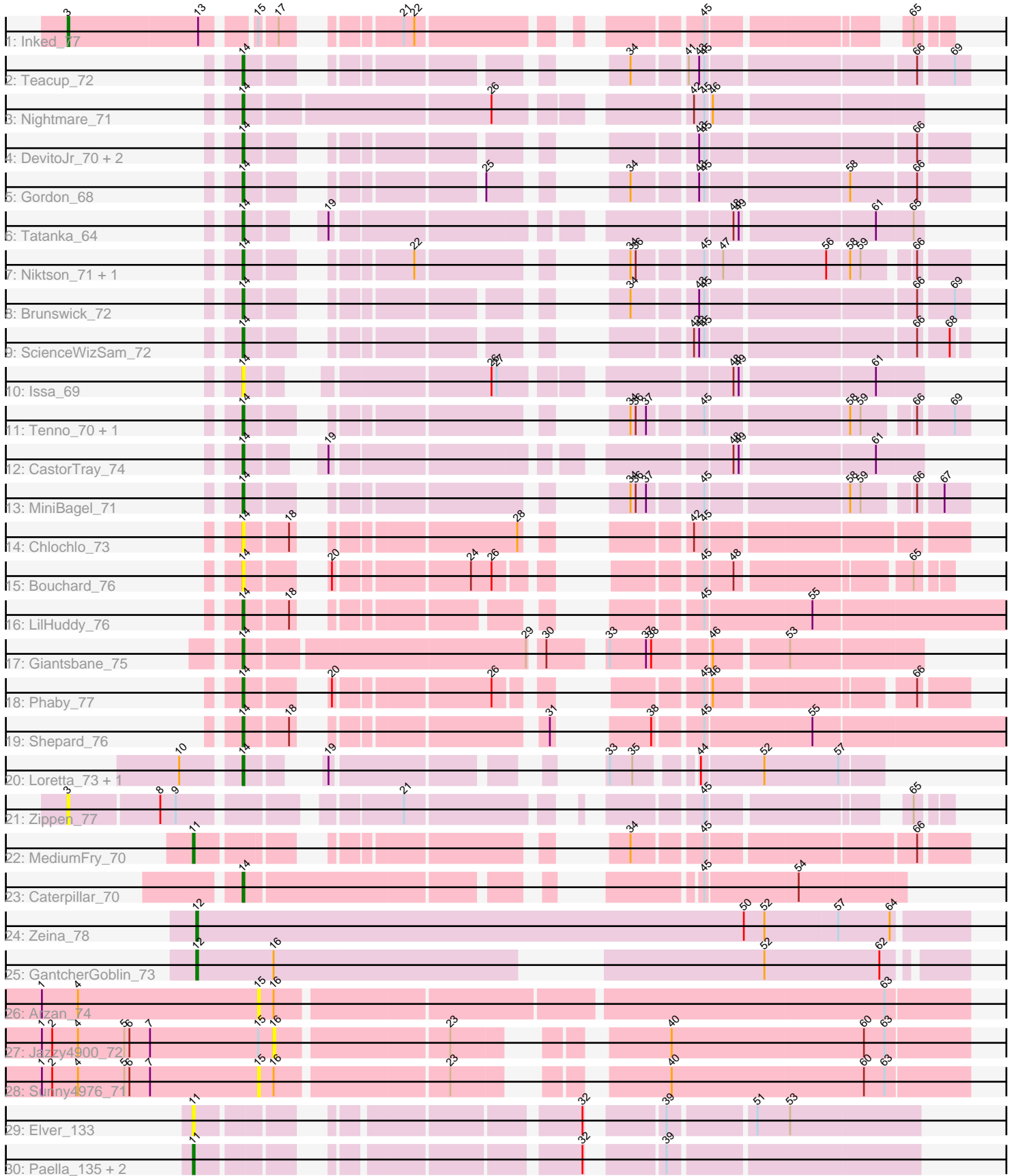


Pham 216349



Note: Tracks are now grouped by subcluster and scaled. Switching in subcluster is indicated by changes in track color. Track scale is now set by default to display the region 30 bp upstream of start 1 to 30 bp downstream of the last possible start. If this default region is judged to be packed too tightly with annotated starts, the track will be further scaled to only show that region of the ORF with annotated starts. This action will be indicated by adding "Zoomed" to the title. For starts, yellow indicates the location of called starts comprised solely of Glimmer/GeneMark auto-annotations, green indicates the location of called starts with at least 1 manual gene annotation.

Pham 216349 Report

This analysis was run 02/22/25 on database version 588.

Pham number 216349 has 37 members, 9 are drafts.

Phages represented in each track:

- Track 1 : Inked_77
- Track 2 : Teacup_72
- Track 3 : Nightmare_71
- Track 4 : DevitoJr_70, Darby_68, Trustiboi_69
- Track 5 : Gordon_68
- Track 6 : Tatanka_64
- Track 7 : Niktson_71, ElephantMan_71
- Track 8 : Brunswick_72
- Track 9 : ScienceWizSam_72
- Track 10 : Issa_69
- Track 11 : Tenno_70, CapnMurica_68
- Track 12 : CastorTray_74
- Track 13 : MiniBagel_71
- Track 14 : Chlochlo_73
- Track 15 : Bouchard_76
- Track 16 : LilHuddy_76
- Track 17 : Giantsbane_75
- Track 18 : Phaby_77
- Track 19 : Shepard_76
- Track 20 : Loretta_73, Ingrid_77
- Track 21 : Zippen_77
- Track 22 : MediumFry_70
- Track 23 : Caterpillar_70
- Track 24 : Zeina_78
- Track 25 : GantcherGoblin_73
- Track 26 : Arzan_74
- Track 27 : Jazzy4900_72
- Track 28 : Sunny4976_71
- Track 29 : Elver_133
- Track 30 : Paella_135, Qui_135, Gandionco_131

Summary of Final Annotations (See graph section above for start numbers):

The start number called the most often in the published annotations is 14, it was called in 22 of the 28 non-draft genes in the pham.

Genes that call this "Most Annotated" start:

- Bouchard_76, Brunswick_72, CapnMurica_68, CastorTray_74, Caterpillar_70, Chlochlo_73, Darby_68, DevitoJr_70, ElephantMan_71, Giantsbane_75, Gordon_68, Ingrid_77, Issa_69, LilHuddy_76, Loretta_73, MiniBagel_71, Nightmare_71, Niktson_71, Phaby_77, ScienceWizSam_72, Shepard_76, Tatanka_64, Teacup_72, Tenno_70, Trustiboi_69,

Genes that have the "Most Annotated" start but do not call it:

-

Genes that do not have the "Most Annotated" start:

- Arzan_74, Elver_133, Gandionco_131, GantcherGoblin_73, Inked_77, Jazzy4900_72, MediumFry_70, Paella_135, Qui_135, Sunny4976_71, Zeina_78, Zippen_77,

Summary by start number:

Start 3:

- Found in 2 of 37 (5.4%) of genes in pham
- Manual Annotations of this start: 1 of 28
- Called 100.0% of time when present
- Phage (with cluster) where this start called: Inked_77 (AU), Zippen_77 (AU3),

Start 11:

- Found in 5 of 37 (13.5%) of genes in pham
- Manual Annotations of this start: 3 of 28
- Called 100.0% of time when present
- Phage (with cluster) where this start called: Elver_133 (FK), Gandionco_131 (FK), MediumFry_70 (AU4), Paella_135 (FK), Qui_135 (FK),

Start 12:

- Found in 2 of 37 (5.4%) of genes in pham
- Manual Annotations of this start: 2 of 28
- Called 100.0% of time when present
- Phage (with cluster) where this start called: GantcherGoblin_73 (AU6), Zeina_78 (AU6),

Start 14:

- Found in 25 of 37 (67.6%) of genes in pham
- Manual Annotations of this start: 22 of 28
- Called 100.0% of time when present
- Phage (with cluster) where this start called: Bouchard_76 (AU2), Brunswick_72 (AU1), CapnMurica_68 (AU1), CastorTray_74 (AU1), Caterpillar_70 (AU4), Chlochlo_73 (AU2), Darby_68 (AU1), DevitoJr_70 (AU1), ElephantMan_71 (AU1), Giantsbane_75 (AU2), Gordon_68 (AU1), Ingrid_77 (AU3), Issa_69 (AU1), LilHuddy_76 (AU2), Loretta_73 (AU3), MiniBagel_71 (AU1), Nightmare_71 (AU1), Niktson_71 (AU1), Phaby_77 (AU2), ScienceWizSam_72 (AU1), Shepard_76 (AU2), Tatanka_64 (AU1), Teacup_72 (AU1), Tenno_70 (AU1), Trustiboi_69 (AU1),

Start 15:

- Found in 4 of 37 (10.8%) of genes in pham
- No Manual Annotations of this start.
- Called 50.0% of time when present
- Phage (with cluster) where this start called: Arzan_74 (FI), Sunny4976_71 (FI),

Start 16:

- Found in 4 of 37 (10.8%) of genes in pham
- No Manual Annotations of this start.
- Called 25.0% of time when present
- Phage (with cluster) where this start called: Jazzy4900_72 (FI),

Summary by clusters:

There are 8 clusters represented in this pham: AU1, AU3, AU2, AU, AU4, AU6, FI, FK,

Info for manual annotations of cluster AU:

- Start number 3 was manually annotated 1 time for cluster AU.

Info for manual annotations of cluster AU1:

- Start number 14 was manually annotated 15 times for cluster AU1.

Info for manual annotations of cluster AU2:

- Start number 14 was manually annotated 4 times for cluster AU2.

Info for manual annotations of cluster AU3:

- Start number 14 was manually annotated 2 times for cluster AU3.

Info for manual annotations of cluster AU4:

- Start number 11 was manually annotated 1 time for cluster AU4.
- Start number 14 was manually annotated 1 time for cluster AU4.

Info for manual annotations of cluster AU6:

- Start number 12 was manually annotated 2 times for cluster AU6.

Info for manual annotations of cluster FK:

- Start number 11 was manually annotated 2 times for cluster FK.

Gene Information:

Gene: Arzan_74 Start: 46947, Stop: 47339, Start Num: 15

Candidate Starts for Arzan_74:

(1, 46821), (4, 46842), (15, 46947), (16, 46956), (63, 47292),

Gene: Bouchard_76 Start: 48019, Stop: 48327, Start Num: 14

Candidate Starts for Bouchard_76:

(Start: 14 @48019 has 22 MA's), (20, 48049), (24, 48118), (26, 48130), (45, 48205), (48, 48220), (65, 48310),

Gene: Brunswick_72 Start: 47263, Stop: 47580, Start Num: 14

Candidate Starts for Brunswick_72:

(Start: 14 @47263 has 22 MA's), (34, 47407), (43, 47440), (45, 47443), (66, 47554), (69, 47572),

Gene: CapnMurica_68 Start: 47980, Stop: 48297, Start Num: 14

Candidate Starts for CapnMurica_68:

(Start: 14 @47980 has 22 MA's), (34, 48130), (36, 48133), (37, 48139), (45, 48166), (58, 48241), (59, 48247), (66, 48271), (69, 48289),

Gene: CastorTray_74 Start: 48014, Stop: 48340, Start Num: 14

Candidate Starts for CastorTray_74:

(Start: 14 @48014 has 22 MA's), (19, 48044), (48, 48239), (49, 48242), (61, 48314),

Gene: Caterpillar_70 Start: 46858, Stop: 47175, Start Num: 14

Candidate Starts for Caterpillar_70:

(Start: 14 @46858 has 22 MA's), (45, 47065), (54, 47116),

Gene: Chlochlo_73 Start: 47546, Stop: 47869, Start Num: 14

Candidate Starts for Chlochlo_73:

(Start: 14 @47546 has 22 MA's), (18, 47570), (28, 47672), (42, 47726), (45, 47732),

Gene: Darby_68 Start: 47007, Stop: 47324, Start Num: 14

Candidate Starts for Darby_68:

(Start: 14 @47007 has 22 MA's), (43, 47184), (45, 47187), (66, 47298),

Gene: DevitoJr_70 Start: 47392, Stop: 47709, Start Num: 14

Candidate Starts for DevitoJr_70:

(Start: 14 @47392 has 22 MA's), (43, 47569), (45, 47572), (66, 47683),

Gene: ElephantMan_71 Start: 47893, Stop: 48210, Start Num: 14

Candidate Starts for ElephantMan_71:

(Start: 14 @47893 has 22 MA's), (22, 47962), (34, 48043), (36, 48046), (45, 48079), (47, 48088), (56, 48142), (58, 48154), (59, 48160), (66, 48184),

Gene: Elver_133 Start: 71797, Stop: 72144, Start Num: 11

Candidate Starts for Elver_133:

(Start: 11 @71797 has 3 MA's), (32, 71974), (39, 72007), (51, 72052), (53, 72070),

Gene: Gandionco_131 Start: 70615, Stop: 70962, Start Num: 11

Candidate Starts for Gandionco_131:

(Start: 11 @70615 has 3 MA's), (32, 70792), (39, 70825),

Gene: GantcherGoblin_73 Start: 45315, Stop: 45701, Start Num: 12

Candidate Starts for GantcherGoblin_73:

(Start: 12 @45315 has 2 MA's), (16, 45360), (52, 45594), (62, 45660),

Gene: Giantsbane_75 Start: 46546, Stop: 46899, Start Num: 14

Candidate Starts for Giantsbane_75:

(Start: 14 @46546 has 22 MA's), (29, 46702), (30, 46708), (33, 46732), (37, 46753), (38, 46756), (46, 46786), (53, 46825),

Gene: Gordon_68 Start: 47880, Stop: 48197, Start Num: 14

Candidate Starts for Gordon_68:

(Start: 14 @47880 has 22 MA's), (25, 47982), (34, 48024), (43, 48057), (45, 48060), (58, 48135), (66, 48171),

Gene: Ingrid_77 Start: 47844, Stop: 48110, Start Num: 14

Candidate Starts for Ingrid_77:

(10, 47814), (Start: 14 @47844 has 22 MA's), (19, 47868), (33, 47973), (35, 47985), (44, 48012), (52, 48045), (57, 48087),

Gene: Inked_77 Start: 48470, Stop: 48871, Start Num: 3

Candidate Starts for Inked_77:

(Start: 3 @48470 has 1 MA's), (13, 48545), (15, 48569), (17, 48578), (21, 48623), (22, 48629), (45, 48758), (65, 48854),

Gene: Issa_69 Start: 47054, Stop: 47380, Start Num: 14

Candidate Starts for Issa_69:

(Start: 14 @47054 has 22 MA's), (26, 47165), (27, 47168), (48, 47279), (49, 47282), (61, 47354),

Gene: Jazzy4900_72 Start: 47820, Stop: 48170, Start Num: 16

Candidate Starts for Jazzy4900_72:

(1, 47685), (2, 47691), (4, 47706), (5, 47733), (6, 47736), (7, 47748), (15, 47811), (16, 47820), (23, 47913), (40, 48000), (60, 48111), (63, 48123),

Gene: LilHuddy_76 Start: 47672, Stop: 48037, Start Num: 14

Candidate Starts for LilHuddy_76:

(Start: 14 @47672 has 22 MA's), (18, 47696), (45, 47852), (55, 47912),

Gene: Loretta_73 Start: 47844, Stop: 48110, Start Num: 14

Candidate Starts for Loretta_73:

(10, 47814), (Start: 14 @47844 has 22 MA's), (19, 47868), (33, 47973), (35, 47985), (44, 48012), (52, 48045), (57, 48087),

Gene: MediumFry_70 Start: 47193, Stop: 47540, Start Num: 11

Candidate Starts for MediumFry_70:

(Start: 11 @47193 has 3 MA's), (34, 47367), (45, 47403), (66, 47514),

Gene: MiniBagel_71 Start: 47984, Stop: 48301, Start Num: 14

Candidate Starts for MiniBagel_71:

(Start: 14 @47984 has 22 MA's), (34, 48134), (36, 48137), (37, 48143), (45, 48170), (58, 48245), (59, 48251), (66, 48275), (67, 48287),

Gene: Nightmare_71 Start: 48297, Stop: 48647, Start Num: 14

Candidate Starts for Nightmare_71:

(Start: 14 @48297 has 22 MA's), (26, 48432), (42, 48525), (45, 48531), (46, 48534),

Gene: Niktson_71 Start: 47893, Stop: 48210, Start Num: 14

Candidate Starts for Niktson_71:

(Start: 14 @47893 has 22 MA's), (22, 47962), (34, 48043), (36, 48046), (45, 48079), (47, 48088), (56, 48142), (58, 48154), (59, 48160), (66, 48184),

Gene: Paella_135 Start: 72360, Stop: 72707, Start Num: 11

Candidate Starts for Paella_135:

(Start: 11 @72360 has 3 MA's), (32, 72537), (39, 72570),

Gene: Phaby_77 Start: 48203, Stop: 48517, Start Num: 14

Candidate Starts for Phaby_77:

(Start: 14 @48203 has 22 MA's), (20, 48233), (26, 48314), (45, 48386), (46, 48389), (66, 48491),

Gene: Qui_135 Start: 72360, Stop: 72707, Start Num: 11

Candidate Starts for Qui_135:

(Start: 11 @72360 has 3 MA's), (32, 72537), (39, 72570),

Gene: ScienceWizSam_72 Start: 47594, Stop: 47908, Start Num: 14

Candidate Starts for ScienceWizSam_72:

(Start: 14 @47594 has 22 MA's), (42, 47768), (43, 47771), (45, 47774), (66, 47885), (68, 47900),

Gene: Shepard_76 Start: 47525, Stop: 47896, Start Num: 14

Candidate Starts for Shepard_76:

(Start: 14 @47525 has 22 MA's), (18, 47549), (31, 47660), (38, 47687), (45, 47711), (55, 47771),

Gene: Sunny4976_71 Start: 47811, Stop: 48170, Start Num: 15

Candidate Starts for Sunny4976_71:

(1, 47685), (2, 47691), (4, 47706), (5, 47733), (6, 47736), (7, 47748), (15, 47811), (16, 47820), (23, 47913), (40, 48000), (60, 48111), (63, 48123),

Gene: Tatanka_64 Start: 47501, Stop: 47827, Start Num: 14

Candidate Starts for Tatanka_64:

(Start: 14 @47501 has 22 MA's), (19, 47531), (48, 47726), (49, 47729), (61, 47801), (65, 47822),

Gene: Teacup_72 Start: 47933, Stop: 48250, Start Num: 14

Candidate Starts for Teacup_72:

(Start: 14 @47933 has 22 MA's), (34, 48077), (41, 48104), (43, 48110), (45, 48113), (66, 48224), (69, 48242),

Gene: Tenno_70 Start: 48017, Stop: 48334, Start Num: 14

Candidate Starts for Tenno_70:

(Start: 14 @48017 has 22 MA's), (34, 48167), (36, 48170), (37, 48176), (45, 48203), (58, 48278), (59, 48284), (66, 48308), (69, 48326),

Gene: Trustiboi_69 Start: 47616, Stop: 47933, Start Num: 14

Candidate Starts for Trustiboi_69:

(Start: 14 @47616 has 22 MA's), (43, 47793), (45, 47796), (66, 47907),

Gene: Zeina_78 Start: 46274, Stop: 46717, Start Num: 12

Candidate Starts for Zeina_78:

(Start: 12 @46274 has 2 MA's), (50, 46592), (52, 46604), (57, 46646), (64, 46676),

Gene: Zippen_77 Start: 48335, Stop: 48745, Start Num: 3

Candidate Starts for Zippen_77:

(Start: 3 @48335 has 1 MA's), (8, 48386), (9, 48395), (21, 48500), (45, 48632), (65, 48728),