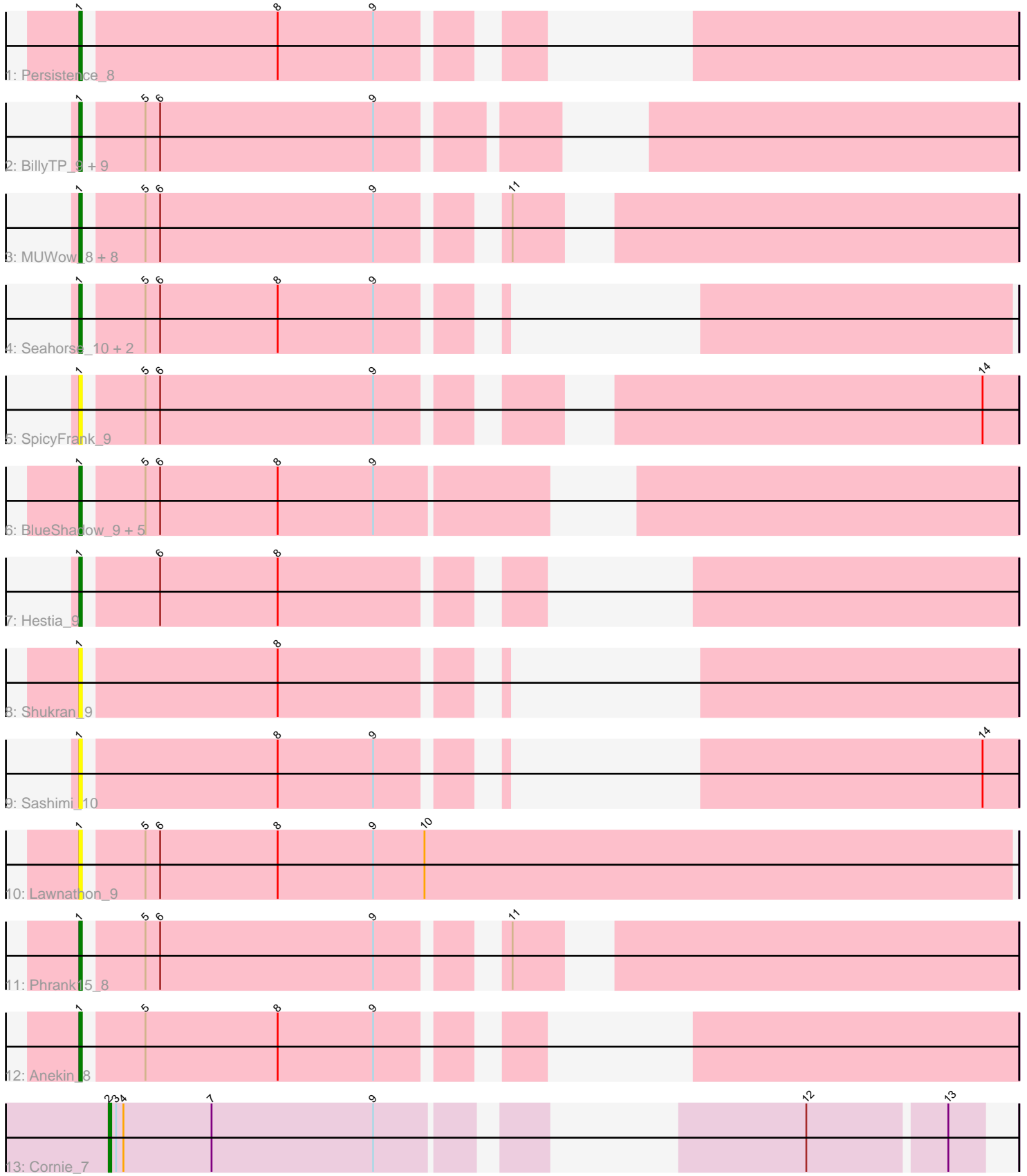


Pham 216354



Note: Tracks are now grouped by subcluster and scaled. Switching in subcluster is indicated by changes in track color. Track scale is now set by default to display the region 30 bp upstream of start 1 to 30 bp downstream of the last possible start. If this default region is judged to be packed too tightly with annotated starts, the track will be further scaled to only show that region of the ORF with annotated starts. This action will be indicated by adding "Zoomed" to the title. For starts, yellow indicates the location of called starts comprised solely of Glimmer/GeneMark auto-annotations, green indicates the location of called starts with at least 1 manual gene annotation.

Pham 216354 Report

This analysis was run 02/22/25 on database version 588.

Pham number 216354 has 37 members, 18 are drafts.

Phages represented in each track:

- Track 1 : Persistence_8
- Track 2 : BillyTP_9, Auxilium_9, Bhageatrice_11, Faja_9, JellyBread_9, EvePickles_9, AdaS_9, Raphaella_9, Windest_10, CookieBear_9
- Track 3 : MUWow_8, BenchScraper_9, YoungHarleezy_9, Gorpy_9, Vopal_10, Sakai_9, MaterMagnus_9, Richie_9, Aikyam_9
- Track 4 : Seahorse_10, Isolde_10, Tiff81_10
- Track 5 : SpicyFrank_9
- Track 6 : BlueShadow_9, Globfish_9, MidnightRain_9, RadFad_9, Hillester_9, ThayneTheZag_9
- Track 7 : Hestia_9
- Track 8 : Shukran_9
- Track 9 : Sashimi_10
- Track 10 : Lawnathon_9
- Track 11 : Phrank15_8
- Track 12 : Anekin_8
- Track 13 : Cornie_7

Summary of Final Annotations (See graph section above for start numbers):

The start number called the most often in the published annotations is 1, it was called in 18 of the 19 non-draft genes in the pham.

Genes that call this "Most Annotated" start:

- AdaS_9, Aikyam_9, Anekin_8, Auxilium_9, BenchScraper_9, Bhageatrice_11, BillyTP_9, BlueShadow_9, CookieBear_9, EvePickles_9, Faja_9, Globfish_9, Gorpy_9, Hestia_9, Hillester_9, Isolde_10, JellyBread_9, Lawnathon_9, MUWow_8, MaterMagnus_9, MidnightRain_9, Persistence_8, Phrank15_8, RadFad_9, Raphaella_9, Richie_9, Sakai_9, Sashimi_10, Seahorse_10, Shukran_9, SpicyFrank_9, ThayneTheZag_9, Tiff81_10, Vopal_10, Windest_10, YoungHarleezy_9,

Genes that have the "Most Annotated" start but do not call it:

-

Genes that do not have the "Most Annotated" start:

- Cornie_7,

Summary by start number:

Start 1:

- Found in 36 of 37 (97.3%) of genes in pham
- Manual Annotations of this start: 18 of 19
- Called 100.0% of time when present
- Phage (with cluster) where this start called: AdaS_9 (AY), Aikyam_9 (AY), Anekin_8 (AY), Auxilium_9 (AY), BenchScraper_9 (AY), Bhageatrice_11 (AY), BillyTP_9 (AY), BlueShadow_9 (AY), CookieBear_9 (AY), EvePickles_9 (AY), Faja_9 (AY), Globfish_9 (AY), Gorpy_9 (AY), Hestia_9 (AY), Hillester_9 (AY), Isolde_10 (AY), JellyBread_9 (AY), Lawnathon_9 (AY), MUWow_8 (AY), MaterMagnus_9 (AY), MidnightRain_9 (AY), Persistence_8 (AY), Phrank15_8 (AY), RadFad_9 (AY), Raphaella_9 (AY), Richie_9 (AY), Sakai_9 (AY), Sashimi_10 (AY), Seahorse_10 (AY), Shukran_9 (AY), SpicyFrank_9 (AY), ThayneTheZag_9 (AY), Tiff81_10 (AY), Vopal_10 (AY), Windest_10 (AY), YoungHarleezy_9 (AY),

Start 2:

- Found in 1 of 37 (2.7%) of genes in pham
- Manual Annotations of this start: 1 of 19
- Called 100.0% of time when present
- Phage (with cluster) where this start called: Cornie_7 (F5),

Summary by clusters:

There are 2 clusters represented in this pham: AY, F5,

Info for manual annotations of cluster AY:

- Start number 1 was manually annotated 18 times for cluster AY.

Info for manual annotations of cluster F5:

- Start number 2 was manually annotated 1 time for cluster F5.

Gene Information:

Gene: AdaS_9 Start: 6955, Stop: 7278, Start Num: 1

Candidate Starts for AdaS_9:

(Start: 1 @6955 has 18 MA's), (5, 6976), (6, 6982), (9, 7069),

Gene: Aikyam_9 Start: 6941, Stop: 7279, Start Num: 1

Candidate Starts for Aikyam_9:

(Start: 1 @6941 has 18 MA's), (5, 6962), (6, 6968), (9, 7055), (11, 7094),

Gene: Anekin_8 Start: 7092, Stop: 7391, Start Num: 1

Candidate Starts for Anekin_8:

(Start: 1 @7092 has 18 MA's), (5, 7113), (8, 7167), (9, 7206),

Gene: Auxilium_9 Start: 6955, Stop: 7278, Start Num: 1

Candidate Starts for Auxilium_9:

(Start: 1 @6955 has 18 MA's), (5, 6976), (6, 6982), (9, 7069),

Gene: BenchScraper_9 Start: 6955, Stop: 7293, Start Num: 1

Candidate Starts for BenchScraper_9:

(Start: 1 @6955 has 18 MA's), (5, 6976), (6, 6982), (9, 7069), (11, 7108),

Gene: Bhageatrice_11 Start: 8150, Stop: 8488, Start Num: 1

Candidate Starts for Bhageatrice_11:

(Start: 1 @8150 has 18 MA's), (5, 8171), (6, 8177), (9, 8264),

Gene: BillyTP_9 Start: 6949, Stop: 7278, Start Num: 1

Candidate Starts for BillyTP_9:

(Start: 1 @6949 has 18 MA's), (5, 6970), (6, 6976), (9, 7063),

Gene: BlueShadow_9 Start: 6939, Stop: 7277, Start Num: 1

Candidate Starts for BlueShadow_9:

(Start: 1 @6939 has 18 MA's), (5, 6960), (6, 6966), (8, 7014), (9, 7053),

Gene: CookieBear_9 Start: 6955, Stop: 7278, Start Num: 1

Candidate Starts for CookieBear_9:

(Start: 1 @6955 has 18 MA's), (5, 6976), (6, 6982), (9, 7069),

Gene: Cornie_7 Start: 5933, Stop: 6220, Start Num: 2

Candidate Starts for Cornie_7:

(Start: 2 @5933 has 1 MA's), (3, 5936), (4, 5939), (7, 5975), (9, 6041), (12, 6152), (13, 6206),

Gene: EvePickles_9 Start: 6997, Stop: 7335, Start Num: 1

Candidate Starts for EvePickles_9:

(Start: 1 @6997 has 18 MA's), (5, 7018), (6, 7024), (9, 7111),

Gene: Faja_9 Start: 6941, Stop: 7279, Start Num: 1

Candidate Starts for Faja_9:

(Start: 1 @6941 has 18 MA's), (5, 6962), (6, 6968), (9, 7055),

Gene: Globfish_9 Start: 6999, Stop: 7322, Start Num: 1

Candidate Starts for Globfish_9:

(Start: 1 @6999 has 18 MA's), (5, 7020), (6, 7026), (8, 7074), (9, 7113),

Gene: Gorpy_9 Start: 6949, Stop: 7287, Start Num: 1

Candidate Starts for Gorpy_9:

(Start: 1 @6949 has 18 MA's), (5, 6970), (6, 6976), (9, 7063), (11, 7102),

Gene: Hestia_9 Start: 7089, Stop: 7388, Start Num: 1

Candidate Starts for Hestia_9:

(Start: 1 @7089 has 18 MA's), (6, 7116), (8, 7164),

Gene: Hillester_9 Start: 6939, Stop: 7277, Start Num: 1

Candidate Starts for Hillester_9:

(Start: 1 @6939 has 18 MA's), (5, 6960), (6, 6966), (8, 7014), (9, 7053),

Gene: Isolde_10 Start: 7012, Stop: 7350, Start Num: 1

Candidate Starts for Isolde_10:

(Start: 1 @7012 has 18 MA's), (5, 7033), (6, 7039), (8, 7087), (9, 7126),

Gene: JellyBread_9 Start: 6948, Stop: 7271, Start Num: 1
Candidate Starts for JellyBread_9:
(Start: 1 @6948 has 18 MA's), (5, 6969), (6, 6975), (9, 7062),

Gene: Lawnathon_9 Start: 7023, Stop: 7397, Start Num: 1
Candidate Starts for Lawnathon_9:
(Start: 1 @7023 has 18 MA's), (5, 7044), (6, 7050), (8, 7098), (9, 7137), (10, 7158),

Gene: MUWow_8 Start: 7027, Stop: 7365, Start Num: 1
Candidate Starts for MUWow_8:
(Start: 1 @7027 has 18 MA's), (5, 7048), (6, 7054), (9, 7141), (11, 7180),

Gene: MaterMagnus_9 Start: 6941, Stop: 7279, Start Num: 1
Candidate Starts for MaterMagnus_9:
(Start: 1 @6941 has 18 MA's), (5, 6962), (6, 6968), (9, 7055), (11, 7094),

Gene: MidnightRain_9 Start: 6939, Stop: 7277, Start Num: 1
Candidate Starts for MidnightRain_9:
(Start: 1 @6939 has 18 MA's), (5, 6960), (6, 6966), (8, 7014), (9, 7053),

Gene: Persistence_8 Start: 7047, Stop: 7346, Start Num: 1
Candidate Starts for Persistence_8:
(Start: 1 @7047 has 18 MA's), (8, 7122), (9, 7161),

Gene: Phrank15_8 Start: 7093, Stop: 7431, Start Num: 1
Candidate Starts for Phrank15_8:
(Start: 1 @7093 has 18 MA's), (5, 7114), (6, 7120), (9, 7207), (11, 7246),

Gene: RadFad_9 Start: 6939, Stop: 7277, Start Num: 1
Candidate Starts for RadFad_9:
(Start: 1 @6939 has 18 MA's), (5, 6960), (6, 6966), (8, 7014), (9, 7053),

Gene: Raphaella_9 Start: 6955, Stop: 7278, Start Num: 1
Candidate Starts for Raphaella_9:
(Start: 1 @6955 has 18 MA's), (5, 6976), (6, 6982), (9, 7069),

Gene: Richie_9 Start: 6955, Stop: 7293, Start Num: 1
Candidate Starts for Richie_9:
(Start: 1 @6955 has 18 MA's), (5, 6976), (6, 6982), (9, 7069), (11, 7108),

Gene: Sakai_9 Start: 6949, Stop: 7287, Start Num: 1
Candidate Starts for Sakai_9:
(Start: 1 @6949 has 18 MA's), (5, 6970), (6, 6976), (9, 7063), (11, 7102),

Gene: Sashimi_10 Start: 7112, Stop: 7393, Start Num: 1
Candidate Starts for Sashimi_10:
(Start: 1 @7112 has 18 MA's), (8, 7187), (9, 7226), (14, 7379),

Gene: Seahorse_10 Start: 7220, Stop: 7498, Start Num: 1
Candidate Starts for Seahorse_10:
(Start: 1 @7220 has 18 MA's), (5, 7241), (6, 7247), (8, 7295), (9, 7334),

Gene: Shukran_9 Start: 6950, Stop: 7231, Start Num: 1

Candidate Starts for Shukran_9:

(Start: 1 @6950 has 18 MA's), (8, 7025),

Gene: SpicyFrank_9 Start: 7003, Stop: 7341, Start Num: 1

Candidate Starts for SpicyFrank_9:

(Start: 1 @7003 has 18 MA's), (5, 7024), (6, 7030), (9, 7117), (14, 7327),

Gene: ThayneTheZag_9 Start: 6976, Stop: 7314, Start Num: 1

Candidate Starts for ThayneTheZag_9:

(Start: 1 @6976 has 18 MA's), (5, 6997), (6, 7003), (8, 7051), (9, 7090),

Gene: Tiff81_10 Start: 7112, Stop: 7456, Start Num: 1

Candidate Starts for Tiff81_10:

(Start: 1 @7112 has 18 MA's), (5, 7133), (6, 7139), (8, 7187), (9, 7226),

Gene: Vopal_10 Start: 7012, Stop: 7350, Start Num: 1

Candidate Starts for Vopal_10:

(Start: 1 @7012 has 18 MA's), (5, 7033), (6, 7039), (9, 7126), (11, 7165),

Gene: Windest_10 Start: 7012, Stop: 7335, Start Num: 1

Candidate Starts for Windest_10:

(Start: 1 @7012 has 18 MA's), (5, 7033), (6, 7039), (9, 7126),

Gene: YoungHarleezy_9 Start: 6953, Stop: 7291, Start Num: 1

Candidate Starts for YoungHarleezy_9:

(Start: 1 @6953 has 18 MA's), (5, 6974), (6, 6980), (9, 7067), (11, 7106),