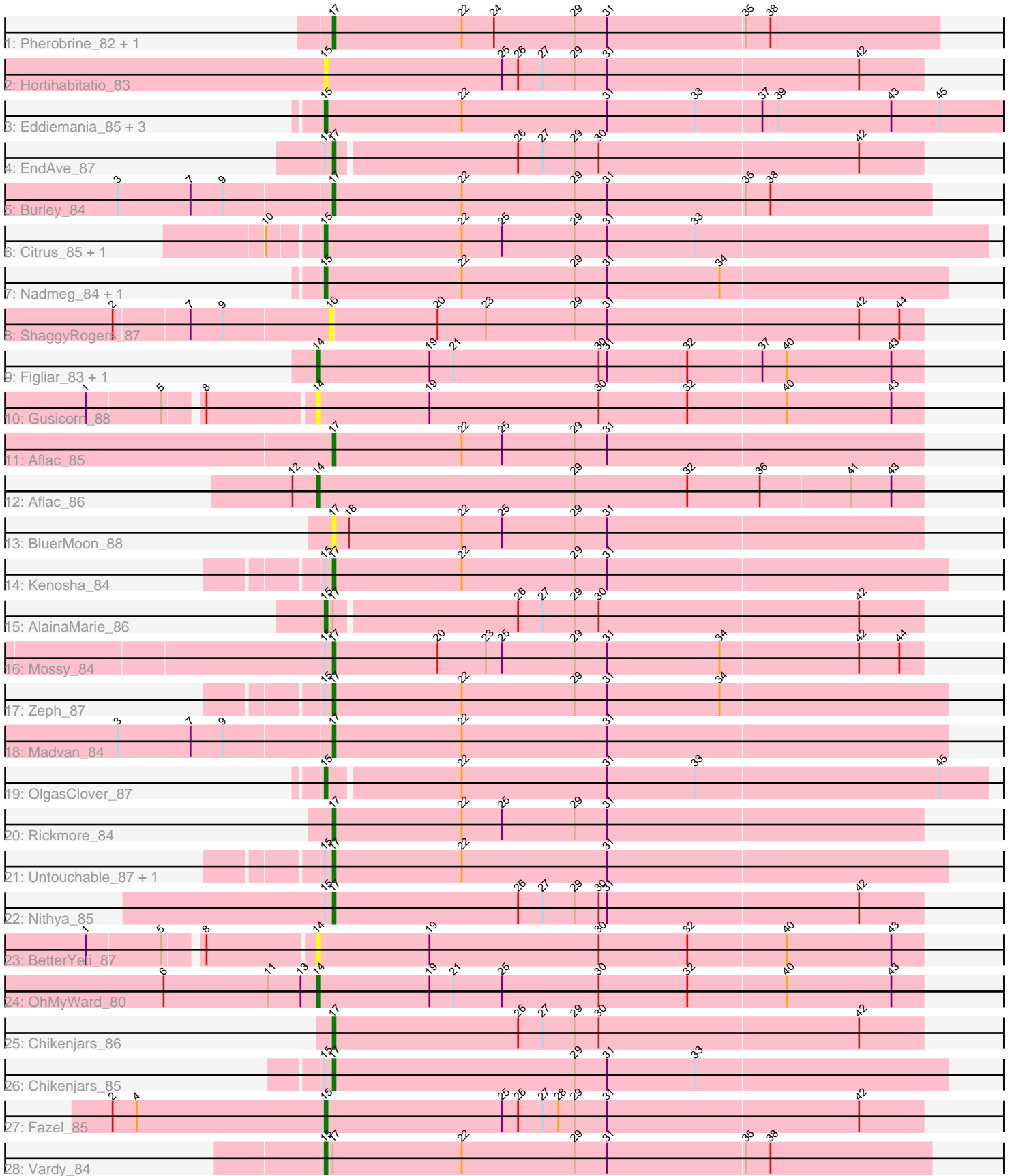


Pham 216365



Note: Tracks are now grouped by subcluster and scaled. Switching in subcluster is indicated by changes in track color. Track scale is now set by default to display the region 30 bp upstream of start 1 to 30 bp downstream of the last possible start. If this default region is judged to be packed too tightly with annotated starts, the track will be further scaled to only show that region of the ORF with annotated starts. This action will be indicated by adding "Zoomed" to the title. For starts, yellow indicates the location of called starts comprised solely of Glimmer/GeneMark auto-annotations, green indicates the location of called starts with at least 1 manual gene annotation.

Pham 216365 Report

This analysis was run 02/22/25 on database version 588.

Pham number 216365 has 36 members, 8 are drafts.

Phages represented in each track:

- Track 1 : Pherobrine_82, Mysticmoon_83
- Track 2 : Hortihabitatio_83
- Track 3 : Eddiemania_85, MajinBuu_87, Duffington_85, TenaciousP_85
- Track 4 : EndAve_87
- Track 5 : Burley_84
- Track 6 : Citrus_85, Runhaar_83
- Track 7 : Nadmeg_84, Hydrus_84
- Track 8 : ShaggyRogers_87
- Track 9 : Figliar_83, Jodelie19_83
- Track 10 : Gusicorn_88
- Track 11 : Aflac_85
- Track 12 : Aflac_86
- Track 13 : BluerMoon_88
- Track 14 : Kenosha_84
- Track 15 : AlainaMarie_86
- Track 16 : Mossy_84
- Track 17 : Zeph_87
- Track 18 : Madvan_84
- Track 19 : OlgasClover_87
- Track 20 : Rickmore_84
- Track 21 : Untouchable_87, Phepper_86
- Track 22 : Nithya_85
- Track 23 : BetterYeti_87
- Track 24 : OhMyWard_80
- Track 25 : Chikenjars_86
- Track 26 : Chikenjars_85
- Track 27 : Fazel_85
- Track 28 : Vardy_84

Summary of Final Annotations (See graph section above for start numbers):

The start number called the most often in the published annotations is 17, it was called in 14 of the 28 non-draft genes in the pham.

Genes that call this "Most Annotated" start:

- Aflac_85, BluerMoon_88, Burley_84, Chikenjars_85, Chikenjars_86, EndAve_87, Kenosha_84, Madvan_84, Mossy_84, Mysticmoon_83, Nithya_85, Phepper_86, Pherobrine_82, Rickmore_84, Untouchable_87, Zeph_87,

Genes that have the "Most Annotated" start but do not call it:

- AlainaMarie_86, Vardy_84,

Genes that do not have the "Most Annotated" start:

- Aflac_86, BetterYeti_87, Citrus_85, Duffington_85, Eddiemania_85, Fazel_85, Figliar_83, Gusicorn_88, Hortihabitatio_83, Hydrus_84, Jodelie19_83, MajinBuu_87, Nadmeg_84, OhMyWard_80, OlgasClover_87, Runhaar_83, ShaggyRogers_87, TenaciousP_85,

Summary by start number:

Start 14:

- Found in 6 of 36 (16.7%) of genes in pham
- Manual Annotations of this start: 4 of 28
- Called 100.0% of time when present
- Phage (with cluster) where this start called: Aflac_86 (DJ), BetterYeti_87 (DJ), Figliar_83 (DJ), Gusicorn_88 (DJ), Jodelie19_83 (DJ), OhMyWard_80 (DJ),

Start 15:

- Found in 21 of 36 (58.3%) of genes in pham
- Manual Annotations of this start: 10 of 28
- Called 61.9% of time when present
- Phage (with cluster) where this start called: AlainaMarie_86 (DJ), Citrus_85 (DJ), Duffington_85 (DJ), Eddiemania_85 (DJ), Fazel_85 (DJ), Hortihabitatio_83 (DJ), Hydrus_84 (DJ), MajinBuu_87 (DJ), Nadmeg_84 (DJ), OlgasClover_87 (DJ), Runhaar_83 (DJ), TenaciousP_85 (DJ), Vardy_84 (DJ),

Start 16:

- Found in 1 of 36 (2.8%) of genes in pham
- No Manual Annotations of this start.
- Called 100.0% of time when present
- Phage (with cluster) where this start called: ShaggyRogers_87 (DJ),

Start 17:

- Found in 18 of 36 (50.0%) of genes in pham
- Manual Annotations of this start: 14 of 28
- Called 88.9% of time when present
- Phage (with cluster) where this start called: Aflac_85 (DJ), BluerMoon_88 (DJ), Burley_84 (DJ), Chikenjars_85 (DJ), Chikenjars_86 (DJ), EndAve_87 (DJ), Kenosha_84 (DJ), Madvan_84 (DJ), Mossy_84 (DJ), Mysticmoon_83 (DJ), Nithya_85 (DJ), Phepper_86 (DJ), Pherobrine_82 (DJ), Rickmore_84 (DJ), Untouchable_87 (DJ), Zeph_87 (DJ),

Summary by clusters:

There is one cluster represented in this pham: DJ

Info for manual annotations of cluster DJ:

- Start number 14 was manually annotated 4 times for cluster DJ.
- Start number 15 was manually annotated 10 times for cluster DJ.
- Start number 17 was manually annotated 14 times for cluster DJ.

Gene Information:

Gene: Aflac_85 Start: 54616, Stop: 54834, Start Num: 17

Candidate Starts for Aflac_85:

(Start: 17 @54616 has 14 MA's), (22, 54664), (25, 54679), (29, 54706), (31, 54718),

Gene: Aflac_86 Start: 54840, Stop: 55064, Start Num: 14

Candidate Starts for Aflac_86:

(12, 54831), (Start: 14 @54840 has 4 MA's), (29, 54936), (32, 54978), (36, 55005), (41, 55038), (43, 55053),

Gene: AlainaMarie_86 Start: 54900, Stop: 55118, Start Num: 15

Candidate Starts for AlainaMarie_86:

(Start: 15 @54900 has 10 MA's), (Start: 17 @54903 has 14 MA's), (26, 54969), (27, 54978), (29, 54990), (30, 54999), (42, 55095),

Gene: BetterYeti_87 Start: 54052, Stop: 54276, Start Num: 14

Candidate Starts for BetterYeti_87:

(1, 53974), (5, 54001), (8, 54013), (Start: 14 @54052 has 4 MA's), (19, 54094), (30, 54157), (32, 54190), (40, 54226), (43, 54265),

Gene: BluerMoon_88 Start: 54687, Stop: 54905, Start Num: 17

Candidate Starts for BluerMoon_88:

(Start: 17 @54687 has 14 MA's), (18, 54693), (22, 54735), (25, 54750), (29, 54777), (31, 54789),

Gene: Burley_84 Start: 53706, Stop: 53927, Start Num: 17

Candidate Starts for Burley_84:

(3, 53628), (7, 53655), (9, 53667), (Start: 17 @53706 has 14 MA's), (22, 53754), (29, 53796), (31, 53808), (35, 53859), (38, 53868),

Gene: Chikenjars_86 Start: 55128, Stop: 55346, Start Num: 17

Candidate Starts for Chikenjars_86:

(Start: 17 @55128 has 14 MA's), (26, 55197), (27, 55206), (29, 55218), (30, 55227), (42, 55323),

Gene: Chikenjars_85 Start: 54894, Stop: 55121, Start Num: 17

Candidate Starts for Chikenjars_85:

(Start: 15 @54891 has 10 MA's), (Start: 17 @54894 has 14 MA's), (29, 54984), (31, 54996), (33, 55029),

Gene: Citrus_85 Start: 54695, Stop: 54940, Start Num: 15

Candidate Starts for Citrus_85:

(10, 54677), (Start: 15 @54695 has 10 MA's), (22, 54746), (25, 54761), (29, 54788), (31, 54800), (33, 54833),

Gene: Duffington_85 Start: 54606, Stop: 54857, Start Num: 15

Candidate Starts for Duffington_85:

(Start: 15 @54606 has 10 MA's), (22, 54657), (31, 54711), (33, 54744), (37, 54768), (39, 54774), (43, 54816), (45, 54834),

Gene: Eddiemania_85 Start: 54725, Stop: 54976, Start Num: 15

Candidate Starts for Eddiemania_85:

(Start: 15 @54725 has 10 MA's), (22, 54776), (31, 54830), (33, 54863), (37, 54887), (39, 54893), (43, 54935), (45, 54953),

Gene: EndAve_87 Start: 54841, Stop: 55056, Start Num: 17

Candidate Starts for EndAve_87:

(Start: 15 @54838 has 10 MA's), (Start: 17 @54841 has 14 MA's), (26, 54907), (27, 54916), (29, 54928), (30, 54937), (42, 55033),

Gene: Fazel_85 Start: 53442, Stop: 53663, Start Num: 15

Candidate Starts for Fazel_85:

(2, 53370), (4, 53379), (Start: 15 @53442 has 10 MA's), (25, 53508), (26, 53514), (27, 53523), (28, 53529), (29, 53535), (31, 53547), (42, 53640),

Gene: Figliar_83 Start: 54424, Stop: 54648, Start Num: 14

Candidate Starts for Figliar_83:

(Start: 14 @54424 has 4 MA's), (19, 54466), (21, 54475), (30, 54529), (31, 54532), (32, 54562), (37, 54589), (40, 54598), (43, 54637),

Gene: Gusicorn_88 Start: 54053, Stop: 54277, Start Num: 14

Candidate Starts for Gusicorn_88:

(1, 53975), (5, 54002), (8, 54014), (Start: 14 @54053 has 4 MA's), (19, 54095), (30, 54158), (32, 54191), (40, 54227), (43, 54266),

Gene: Hortihabitatio_83 Start: 53488, Stop: 53709, Start Num: 15

Candidate Starts for Hortihabitatio_83:

(Start: 15 @53488 has 10 MA's), (25, 53554), (26, 53560), (27, 53569), (29, 53581), (31, 53593), (42, 53686),

Gene: Hydrus_84 Start: 54426, Stop: 54656, Start Num: 15

Candidate Starts for Hydrus_84:

(Start: 15 @54426 has 10 MA's), (22, 54477), (29, 54519), (31, 54531), (34, 54573),

Gene: Jodelie19_83 Start: 55591, Stop: 55815, Start Num: 14

Candidate Starts for Jodelie19_83:

(Start: 14 @55591 has 4 MA's), (19, 55633), (21, 55642), (30, 55696), (31, 55699), (32, 55729), (37, 55756), (40, 55765), (43, 55804),

Gene: Kenosha_84 Start: 54511, Stop: 54738, Start Num: 17

Candidate Starts for Kenosha_84:

(Start: 15 @54508 has 10 MA's), (Start: 17 @54511 has 14 MA's), (22, 54559), (29, 54601), (31, 54613),

Gene: Madvan_84 Start: 53741, Stop: 53968, Start Num: 17

Candidate Starts for Madvan_84:

(3, 53663), (7, 53690), (9, 53702), (Start: 17 @53741 has 14 MA's), (22, 53789), (31, 53843),

Gene: MajinBuu_87 Start: 54788, Stop: 55039, Start Num: 15

Candidate Starts for MajinBuu_87:

(Start: 15 @54788 has 10 MA's), (22, 54839), (31, 54893), (33, 54926), (37, 54950), (39, 54956), (43, 54998), (45, 55016),

Gene: Mossy_84 Start: 54808, Stop: 55026, Start Num: 17

Candidate Starts for Mossy_84:

(Start: 15 @54805 has 10 MA's), (Start: 17 @54808 has 14 MA's), (20, 54847), (23, 54865), (25, 54871), (29, 54898), (31, 54910), (34, 54952), (42, 55003), (44, 55018),

Gene: Mysticmoon_83 Start: 53604, Stop: 53828, Start Num: 17

Candidate Starts for Mysticmoon_83:

(Start: 17 @53604 has 14 MA's), (22, 53652), (24, 53664), (29, 53694), (31, 53706), (35, 53757), (38, 53766),

Gene: Nadmeg_84 Start: 54723, Stop: 54953, Start Num: 15

Candidate Starts for Nadmeg_84:

(Start: 15 @54723 has 10 MA's), (22, 54774), (29, 54816), (31, 54828), (34, 54870),

Gene: Nithya_85 Start: 54677, Stop: 54895, Start Num: 17

Candidate Starts for Nithya_85:

(Start: 15 @54674 has 10 MA's), (Start: 17 @54677 has 14 MA's), (26, 54746), (27, 54755), (29, 54767), (30, 54776), (31, 54779), (42, 54872),

Gene: OhMyWard_80 Start: 54597, Stop: 54821, Start Num: 14

Candidate Starts for OhMyWard_80:

(6, 54540), (11, 54579), (13, 54591), (Start: 14 @54597 has 4 MA's), (19, 54639), (21, 54648), (25, 54666), (30, 54702), (32, 54735), (40, 54771), (43, 54810),

Gene: OlgasClover_87 Start: 55488, Stop: 55730, Start Num: 15

Candidate Starts for OlgasClover_87:

(Start: 15 @55488 has 10 MA's), (22, 55536), (31, 55590), (33, 55623), (45, 55713),

Gene: Phepper_86 Start: 54213, Stop: 54440, Start Num: 17

Candidate Starts for Phepper_86:

(Start: 15 @54210 has 10 MA's), (Start: 17 @54213 has 14 MA's), (22, 54261), (31, 54315),

Gene: Pherobrine_82 Start: 53659, Stop: 53883, Start Num: 17

Candidate Starts for Pherobrine_82:

(Start: 17 @53659 has 14 MA's), (22, 53707), (24, 53719), (29, 53749), (31, 53761), (35, 53812), (38, 53821),

Gene: Rickmore_84 Start: 53515, Stop: 53733, Start Num: 17

Candidate Starts for Rickmore_84:

(Start: 17 @53515 has 14 MA's), (22, 53563), (25, 53578), (29, 53605), (31, 53617),

Gene: Runhaar_83 Start: 53800, Stop: 54045, Start Num: 15

Candidate Starts for Runhaar_83:

(10, 53782), (Start: 15 @53800 has 10 MA's), (22, 53851), (25, 53866), (29, 53893), (31, 53905), (33, 53938),

Gene: ShaggyRogers_87 Start: 53795, Stop: 54013, Start Num: 16

Candidate Starts for ShaggyRogers_87:

(2, 53717), (7, 53744), (9, 53756), (16, 53795), (20, 53834), (23, 53852), (29, 53885), (31, 53897), (42, 53990), (44, 54005),

Gene: TenaciousP_85 Start: 55540, Stop: 55791, Start Num: 15

Candidate Starts for TenaciousP_85:

(Start: 15 @55540 has 10 MA's), (22, 55591), (31, 55645), (33, 55678), (37, 55702), (39, 55708), (43, 55750), (45, 55768),

Gene: Untouchable_87 Start: 55210, Stop: 55437, Start Num: 17

Candidate Starts for Untouchable_87:

(Start: 15 @55207 has 10 MA's), (Start: 17 @55210 has 14 MA's), (22, 55258), (31, 55312),

Gene: Vardy_84 Start: 53737, Stop: 53961, Start Num: 15

Candidate Starts for Vardy_84:

(Start: 15 @53737 has 10 MA's), (Start: 17 @53740 has 14 MA's), (22, 53788), (29, 53830), (31, 53842), (35, 53893), (38, 53902),

Gene: Zeph_87 Start: 55014, Stop: 55241, Start Num: 17

Candidate Starts for Zeph_87:

(Start: 15 @55011 has 10 MA's), (Start: 17 @55014 has 14 MA's), (22, 55062), (29, 55104), (31, 55116), (34, 55158),