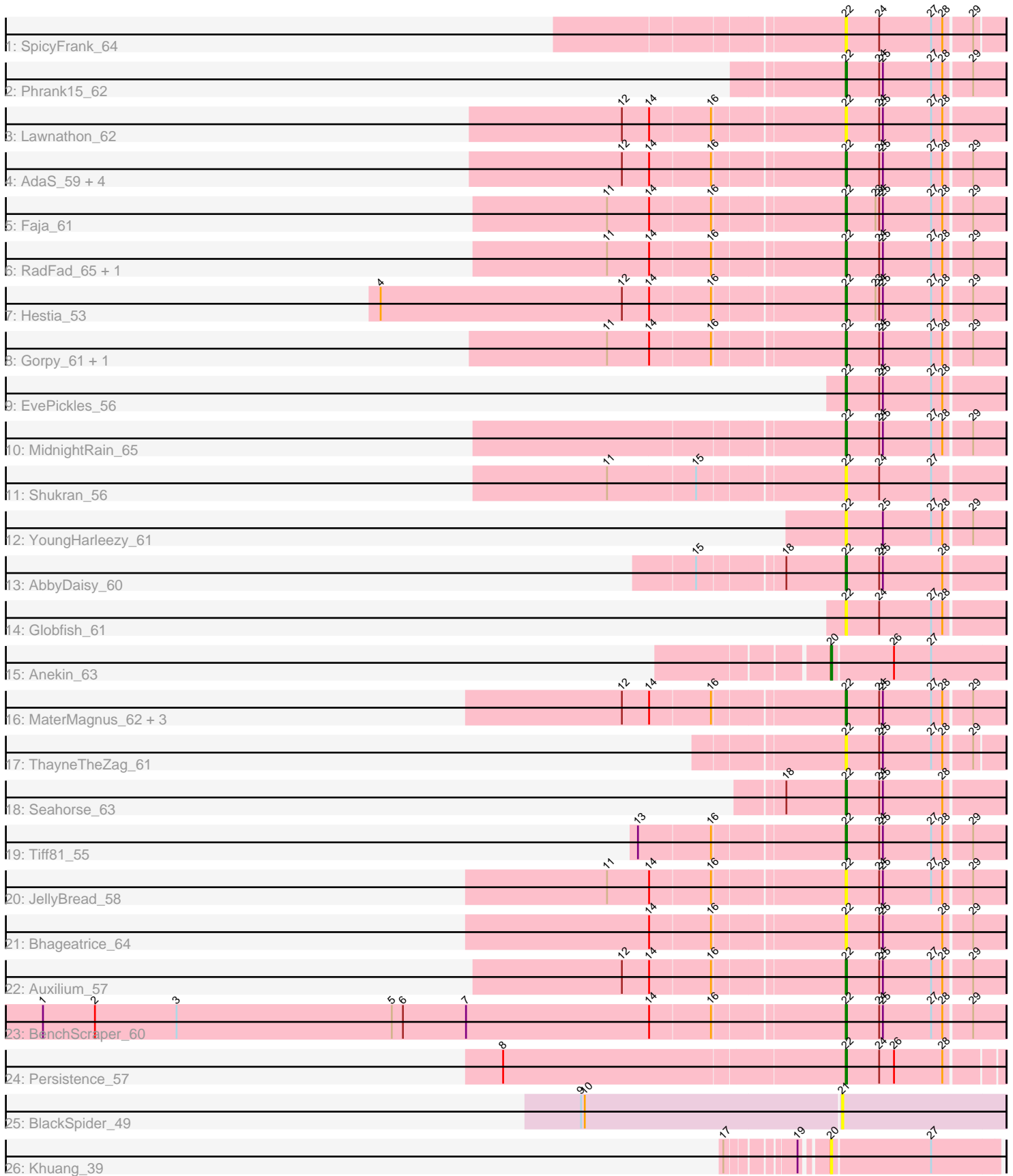


Pham 216372



Note: Tracks are now grouped by subcluster and scaled. Switching in subcluster is indicated by changes in track color. Track scale is now set by default to display the region 30 bp upstream of start 1 to 30 bp downstream of the last possible start. If this default region is judged to be packed too tightly with annotated starts, the track will be further scaled to only show that region of the ORF with annotated starts. This action will be indicated by adding "Zoomed" to the title. For starts, yellow indicates the location of called starts comprised solely of Glimmer/GeneMark auto-annotations, green indicates the location of called starts with at least 1 manual gene annotation.

Pham 216372 Report

This analysis was run 02/22/25 on database version 588.

Pham number 216372 has 35 members, 17 are drafts.

Phages represented in each track:

- Track 1 : SpicyFrank_64
- Track 2 : Phrank15_62
- Track 3 : Lawnathon_62
- Track 4 : AdaS_59, CookieBear_61, BlueShadow_62, Isolde_60, BillyTP_63
- Track 5 : Faja_61
- Track 6 : RadFad_65, Hillester_65
- Track 7 : Hestia_53
- Track 8 : Gorpy_61, Sakai_60
- Track 9 : EvePickles_56
- Track 10 : MidnightRain_65
- Track 11 : Shukran_56
- Track 12 : YoungHarleezy_61
- Track 13 : AbbyDaisy_60
- Track 14 : Globfish_61
- Track 15 : Anekin_63
- Track 16 : MaterMagnus_62, Raphaella_60, Aikyam_60, MUWow_60
- Track 17 : ThayneTheZag_61
- Track 18 : Seahorse_63
- Track 19 : Tiff81_55
- Track 20 : JellyBread_58
- Track 21 : Bhageatrice_64
- Track 22 : Auxilium_57
- Track 23 : BenchScraper_60
- Track 24 : Persistence_57
- Track 25 : BlackSpider_49
- Track 26 : Khuang_39

Summary of Final Annotations (See graph section above for start numbers):

The start number called the most often in the published annotations is 22, it was called in 17 of the 18 non-draft genes in the pham.

Genes that call this "Most Annotated" start:

- AbbyDaisy_60, AdaS_59, Aikyam_60, Auxilium_57, BenchScraper_60, Bhageatrice_64, BillyTP_63, BlueShadow_62, CookieBear_61, EvePickles_56, Faja_61, Globfish_61, Gorpy_61, Hestia_53, Hillester_65, Isolde_60, JellyBread_58, Lawnathon_62, MUWow_60, MaterMagnus_62, MidnightRain_65, Persistence_57, Phrank15_62, RadFad_65, Raphaella_60, Sakai_60, Seahorse_63, Shukran_56, SpicyFrank_64, ThayneTheZag_61, Tiff81_55, YoungHarleezy_61,

Genes that have the "Most Annotated" start but do not call it:

-

Genes that do not have the "Most Annotated" start:

- Anekin_63, BlackSpider_49, Khuang_39,

Summary by start number:

Start 20:

- Found in 2 of 35 (5.7%) of genes in pham
- Manual Annotations of this start: 1 of 18
- Called 100.0% of time when present
- Phage (with cluster) where this start called: Anekin_63 (AY), Khuang_39 (FS),

Start 21:

- Found in 1 of 35 (2.9%) of genes in pham
- No Manual Annotations of this start.
- Called 100.0% of time when present
- Phage (with cluster) where this start called: BlackSpider_49 (FN),

Start 22:

- Found in 32 of 35 (91.4%) of genes in pham
- Manual Annotations of this start: 17 of 18
- Called 100.0% of time when present
- Phage (with cluster) where this start called: AbbyDaisy_60 (AY), AdaS_59 (AY), Aikyam_60 (AY), Auxilium_57 (AY), BenchScraper_60 (AY), Bhageatrice_64 (AY), BillyTP_63 (AY), BlueShadow_62 (AY), CookieBear_61 (AY), EvePickles_56 (AY), Faja_61 (AY), Globfish_61 (AY), Gorpy_61 (AY), Hestia_53 (AY), Hillester_65 (AY), Isolde_60 (AY), JellyBread_58 (AY), Lawnathon_62 (AY), MUWow_60 (AY), MaterMagnus_62 (AY), MidnightRain_65 (AY), Persistence_57 (AY), Phrank15_62 (AY), RadFad_65 (AY), Raphaella_60 (AY), Sakai_60 (AY), Seahorse_63 (AY), Shukran_56 (AY), SpicyFrank_64 (AY), ThayneTheZag_61 (AY), Tiff81_55 (AY), YoungHarleezy_61 (AY),

Summary by clusters:

There are 3 clusters represented in this pham: AY, FS, FN,

Info for manual annotations of cluster AY:

- Start number 20 was manually annotated 1 time for cluster AY.
- Start number 22 was manually annotated 17 times for cluster AY.

Gene Information:

Gene: AbbyDaisy_60 Start: 34539, Stop: 34664, Start Num: 22

Candidate Starts for AbbyDaisy_60:

(15, 34428), (18, 34491), (Start: 22 @34539 has 17 MA's), (24, 34566), (25, 34569), (28, 34617),

Gene: AdaS_59 Start: 32356, Stop: 32481, Start Num: 22

Candidate Starts for AdaS_59:

(12, 32188), (14, 32209), (16, 32257), (Start: 22 @32356 has 17 MA's), (24, 32383), (25, 32386), (27, 32425), (28, 32434), (29, 32455),

Gene: Aikyam_60 Start: 32675, Stop: 32800, Start Num: 22

Candidate Starts for Aikyam_60:

(12, 32507), (14, 32528), (16, 32576), (Start: 22 @32675 has 17 MA's), (24, 32702), (25, 32705), (27, 32744), (28, 32753), (29, 32774),

Gene: Anekin_63 Start: 34902, Stop: 35039, Start Num: 20

Candidate Starts for Anekin_63:

(Start: 20 @34902 has 1 MA's), (26, 34950), (27, 34980),

Gene: Auxilium_57 Start: 31829, Stop: 31954, Start Num: 22

Candidate Starts for Auxilium_57:

(12, 31661), (14, 31682), (16, 31730), (Start: 22 @31829 has 17 MA's), (24, 31856), (25, 31859), (27, 31898), (28, 31907), (29, 31928),

Gene: BenchScraper_60 Start: 33867, Stop: 33992, Start Num: 22

Candidate Starts for BenchScraper_60:

(1, 33231), (2, 33273), (3, 33339), (5, 33513), (6, 33522), (7, 33573), (14, 33720), (16, 33768), (Start: 22 @33867 has 17 MA's), (24, 33894), (25, 33897), (27, 33936), (28, 33945), (29, 33966),

Gene: Bhageatrice_64 Start: 36379, Stop: 36504, Start Num: 22

Candidate Starts for Bhageatrice_64:

(14, 36232), (16, 36280), (Start: 22 @36379 has 17 MA's), (24, 36406), (25, 36409), (28, 36457), (29, 36478),

Gene: BillyTP_63 Start: 35722, Stop: 35847, Start Num: 22

Candidate Starts for BillyTP_63:

(12, 35554), (14, 35575), (16, 35623), (Start: 22 @35722 has 17 MA's), (24, 35749), (25, 35752), (27, 35791), (28, 35800), (29, 35821),

Gene: BlackSpider_49 Start: 31161, Stop: 31292, Start Num: 21

Candidate Starts for BlackSpider_49:

(9, 30954), (10, 30957), (21, 31161),

Gene: BlueShadow_62 Start: 34512, Stop: 34637, Start Num: 22

Candidate Starts for BlueShadow_62:

(12, 34344), (14, 34365), (16, 34413), (Start: 22 @34512 has 17 MA's), (24, 34539), (25, 34542), (27, 34581), (28, 34590), (29, 34611),

Gene: CookieBear_61 Start: 34106, Stop: 34231, Start Num: 22

Candidate Starts for CookieBear_61:

(12, 33938), (14, 33959), (16, 34007), (Start: 22 @34106 has 17 MA's), (24, 34133), (25, 34136), (27, 34175), (28, 34184), (29, 34205),

Gene: EvePickles_56 Start: 34096, Stop: 34221, Start Num: 22

Candidate Starts for EvePickles_56:

(Start: 22 @34096 has 17 MA's), (24, 34123), (25, 34126), (27, 34165), (28, 34174),

Gene: Faja_61 Start: 35481, Stop: 35606, Start Num: 22

Candidate Starts for Faja_61:

(11, 35301), (14, 35334), (16, 35382), (Start: 22 @35481 has 17 MA's), (23, 35505), (24, 35508), (25, 35511), (27, 35550), (28, 35559), (29, 35580),

Gene: Globfish_61 Start: 34535, Stop: 34660, Start Num: 22

Candidate Starts for Globfish_61:

(Start: 22 @34535 has 17 MA's), (24, 34562), (27, 34604), (28, 34613),

Gene: Gorpy_61 Start: 35098, Stop: 35223, Start Num: 22

Candidate Starts for Gorpy_61:

(11, 34918), (14, 34951), (16, 34999), (Start: 22 @35098 has 17 MA's), (24, 35125), (25, 35128), (27, 35167), (28, 35176), (29, 35197),

Gene: Hestia_53 Start: 31665, Stop: 31790, Start Num: 22

Candidate Starts for Hestia_53:

(4, 31302), (12, 31497), (14, 31518), (16, 31566), (Start: 22 @31665 has 17 MA's), (23, 31689), (24, 31692), (25, 31695), (27, 31734), (28, 31743), (29, 31764),

Gene: Hillester_65 Start: 35445, Stop: 35570, Start Num: 22

Candidate Starts for Hillester_65:

(11, 35265), (14, 35298), (16, 35346), (Start: 22 @35445 has 17 MA's), (24, 35472), (25, 35475), (27, 35514), (28, 35523), (29, 35544),

Gene: Isolde_60 Start: 33775, Stop: 33900, Start Num: 22

Candidate Starts for Isolde_60:

(12, 33607), (14, 33628), (16, 33676), (Start: 22 @33775 has 17 MA's), (24, 33802), (25, 33805), (27, 33844), (28, 33853), (29, 33874),

Gene: JellyBread_58 Start: 33127, Stop: 33252, Start Num: 22

Candidate Starts for JellyBread_58:

(11, 32947), (14, 32980), (16, 33028), (Start: 22 @33127 has 17 MA's), (24, 33154), (25, 33157), (27, 33196), (28, 33205), (29, 33226),

Gene: Khuang_39 Start: 25888, Stop: 25757, Start Num: 20

Candidate Starts for Khuang_39:

(17, 25951), (19, 25906), (Start: 20 @25888 has 1 MA's), (27, 25810),

Gene: Lawnathon_62 Start: 34267, Stop: 34392, Start Num: 22

Candidate Starts for Lawnathon_62:

(12, 34099), (14, 34120), (16, 34168), (Start: 22 @34267 has 17 MA's), (24, 34294), (25, 34297), (27, 34336), (28, 34345),

Gene: MUWow_60 Start: 34442, Stop: 34567, Start Num: 22

Candidate Starts for MUWow_60:

(12, 34274), (14, 34295), (16, 34343), (Start: 22 @34442 has 17 MA's), (24, 34469), (25, 34472), (27, 34511), (28, 34520), (29, 34541),

Gene: MaterMagnus_62 Start: 34847, Stop: 34972, Start Num: 22
Candidate Starts for MaterMagnus_62:
(12, 34679), (14, 34700), (16, 34748), (Start: 22 @34847 has 17 MA's), (24, 34874), (25, 34877), (27, 34916), (28, 34925), (29, 34946),

Gene: MidnightRain_65 Start: 35616, Stop: 35741, Start Num: 22
Candidate Starts for MidnightRain_65:
(Start: 22 @35616 has 17 MA's), (24, 35643), (25, 35646), (27, 35685), (28, 35694), (29, 35715),

Gene: Persistence_57 Start: 33216, Stop: 33335, Start Num: 22
Candidate Starts for Persistence_57:
(8, 32946), (Start: 22 @33216 has 17 MA's), (24, 33243), (26, 33255), (28, 33294),

Gene: Phrank15_62 Start: 34398, Stop: 34523, Start Num: 22
Candidate Starts for Phrank15_62:
(Start: 22 @34398 has 17 MA's), (24, 34425), (25, 34428), (27, 34467), (28, 34476), (29, 34497),

Gene: RadFad_65 Start: 35445, Stop: 35570, Start Num: 22
Candidate Starts for RadFad_65:
(11, 35265), (14, 35298), (16, 35346), (Start: 22 @35445 has 17 MA's), (24, 35472), (25, 35475), (27, 35514), (28, 35523), (29, 35544),

Gene: Raphaella_60 Start: 33965, Stop: 34090, Start Num: 22
Candidate Starts for Raphaella_60:
(12, 33797), (14, 33818), (16, 33866), (Start: 22 @33965 has 17 MA's), (24, 33992), (25, 33995), (27, 34034), (28, 34043), (29, 34064),

Gene: Sakai_60 Start: 33809, Stop: 33934, Start Num: 22
Candidate Starts for Sakai_60:
(11, 33629), (14, 33662), (16, 33710), (Start: 22 @33809 has 17 MA's), (24, 33836), (25, 33839), (27, 33878), (28, 33887), (29, 33908),

Gene: Seahorse_63 Start: 35952, Stop: 36077, Start Num: 22
Candidate Starts for Seahorse_63:
(18, 35904), (Start: 22 @35952 has 17 MA's), (24, 35979), (25, 35982), (28, 36030),

Gene: Shukran_56 Start: 32442, Stop: 32567, Start Num: 22
Candidate Starts for Shukran_56:
(11, 32262), (15, 32331), (Start: 22 @32442 has 17 MA's), (24, 32469), (27, 32511),

Gene: SpicyFrank_64 Start: 35216, Stop: 35338, Start Num: 22
Candidate Starts for SpicyFrank_64:
(Start: 22 @35216 has 17 MA's), (24, 35243), (27, 35285), (28, 35294), (29, 35315),

Gene: ThayneTheZag_61 Start: 33668, Stop: 33790, Start Num: 22
Candidate Starts for ThayneTheZag_61:
(Start: 22 @33668 has 17 MA's), (24, 33695), (25, 33698), (27, 33737), (28, 33746), (29, 33767),

Gene: Tiff81_55 Start: 32012, Stop: 32137, Start Num: 22
Candidate Starts for Tiff81_55:
(13, 31856), (16, 31913), (Start: 22 @32012 has 17 MA's), (24, 32039), (25, 32042), (27, 32081), (28, 32090), (29, 32111),

Gene: YoungHarleezy_61 Start: 34504, Stop: 34629, Start Num: 22

Candidate Starts for YoungHarleezy_61:

(Start: 22 @34504 has 17 MA's), (25, 34534), (27, 34573), (28, 34582), (29, 34603),