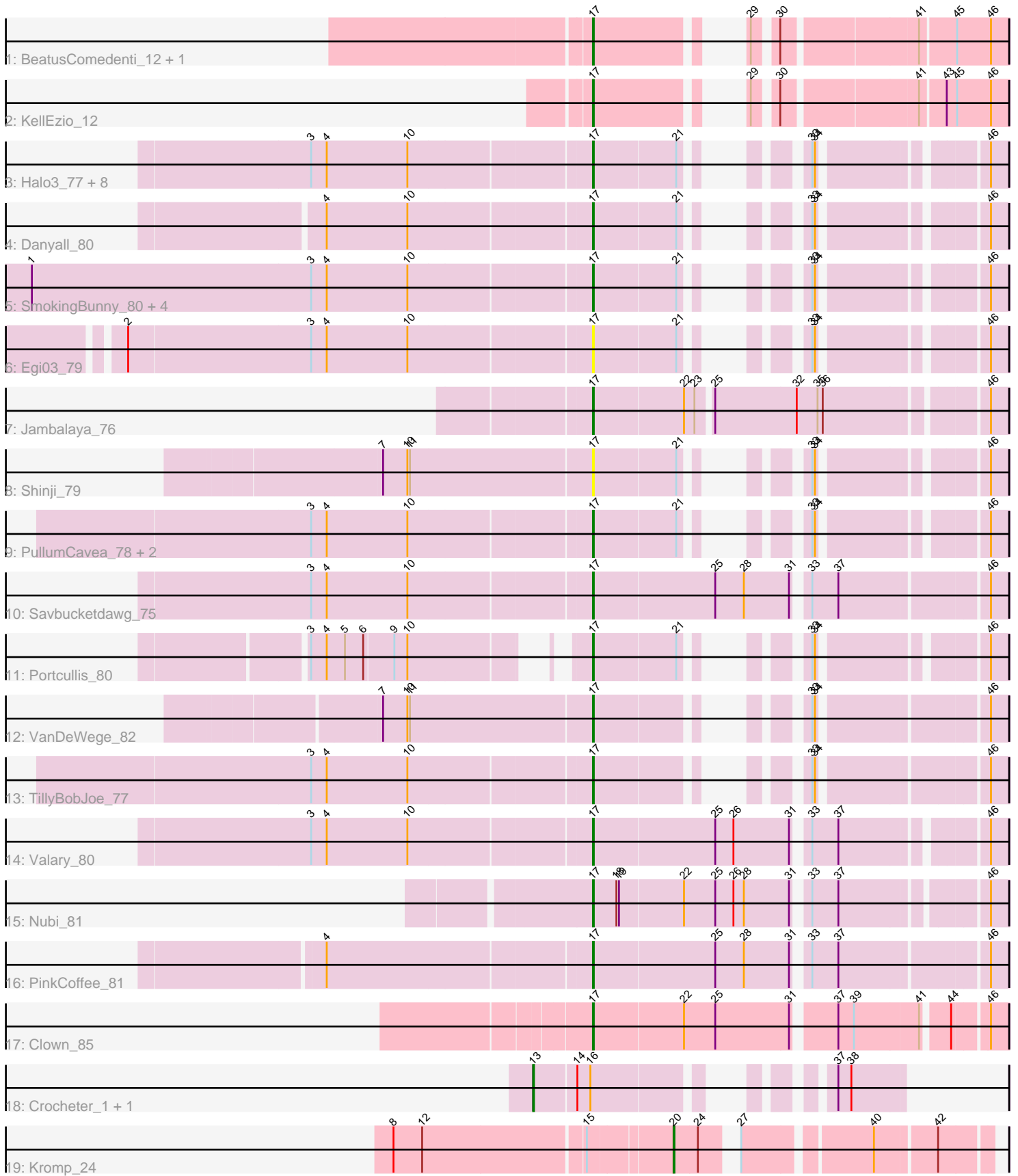


Pham 216375



Note: Tracks are now grouped by subcluster and scaled. Switching in subcluster is indicated by changes in track color. Track scale is now set by default to display the region 30 bp upstream of start 1 to 30 bp downstream of the last possible start. If this default region is judged to be packed too tightly with annotated starts, the track will be further scaled to only show that region of the ORF with annotated starts. This action will be indicated by adding "Zoomed" to the title. For starts, yellow indicates the location of called starts comprised solely of Glimmer/GeneMark auto-annotations, green indicates the location of called starts with at least 1 manual gene annotation.

## Pham 216375 Report

This analysis was run 02/22/25 on database version 588.

Pham number 216375 has 35 members, 5 are drafts.

Phages represented in each track:

- Track 1 : BeatusComedenti\_12, Kitkat\_13
- Track 2 : KellEzio\_12
- Track 3 : Halo3\_77, Gezellig\_79, KimmyK\_79, CherryCola\_80, Mutzi\_77, Bakery\_84, CoveyB\_80, YungMoney\_78, Wizard\_76
- Track 4 : Danyall\_80
- Track 5 : SmokingBunny\_80, Twister6\_80, Togo\_79, Salvador\_79, Evamon\_79
- Track 6 : Egi03\_79
- Track 7 : Jambalaya\_76
- Track 8 : Shinji\_79
- Track 9 : PullumCavea\_78, Phlop\_77, RogerDodger\_83
- Track 10 : Savbucketdawg\_75
- Track 11 : Portcullis\_80
- Track 12 : VanDeWege\_82
- Track 13 : TillyBobJoe\_77
- Track 14 : Valary\_80
- Track 15 : Nubi\_81
- Track 16 : PinkCoffee\_81
- Track 17 : Clown\_85
- Track 18 : Crocheter\_1, Untouchable\_1
- Track 19 : Kromp\_24

### ***Summary of Final Annotations (See graph section above for start numbers):***

The start number called the most often in the published annotations is 17, it was called in 27 of the 30 non-draft genes in the pham.

Genes that call this "Most Annotated" start:

- Bakery\_84, BeatusComedenti\_12, CherryCola\_80, Clown\_85, CoveyB\_80, Danyall\_80, Egi03\_79, Evamon\_79, Gezellig\_79, Halo3\_77, Jambalaya\_76, KellEzio\_12, KimmyK\_79, Kitkat\_13, Mutzi\_77, Nubi\_81, Phlop\_77, PinkCoffee\_81, Portcullis\_80, PullumCavea\_78, RogerDodger\_83, Salvador\_79, Savbucketdawg\_75, Shinji\_79, SmokingBunny\_80, TillyBobJoe\_77, Togo\_79, Twister6\_80, Valary\_80, VanDeWege\_82, Wizard\_76, YungMoney\_78,

Genes that have the "Most Annotated" start but do not call it:

- 

Genes that do not have the "Most Annotated" start:

- Crocheter\_1, Kromp\_24, Untouchable\_1,

### Summary by start number:

Start 13:

- Found in 2 of 35 ( 5.7% ) of genes in pham
- Manual Annotations of this start: 2 of 30
- Called 100.0% of time when present
- Phage (with cluster) where this start called: Crocheter\_1 (DJ), Untouchable\_1 (DJ),

Start 17:

- Found in 32 of 35 ( 91.4% ) of genes in pham
- Manual Annotations of this start: 27 of 30
- Called 100.0% of time when present
- Phage (with cluster) where this start called: Bakery\_84 (DC1), BeatusComedenti\_12 (AT), CherryCola\_80 (DC1), Clown\_85 (DC2), CoveyB\_80 (DC1), Danyall\_80 (DC1), Egi03\_79 (DC1), Evamon\_79 (DC1), Gezellig\_79 (DC1), Halo3\_77 (DC1), Jambalaya\_76 (DC1), KellEzio\_12 (AT), KimmyK\_79 (DC1), Kitkat\_13 (AT), Mutzi\_77 (DC1), Nubi\_81 (DC1), Phlop\_77 (DC1), PinkCoffee\_81 (DC1), Portcullis\_80 (DC1), PullumCavea\_78 (DC1), RogerDodger\_83 (DC1), Salvador\_79 (DC1), Savbucketdawg\_75 (DC1), Shinji\_79 (DC1), SmokingBunny\_80 (DC1), TillyBobJoe\_77 (DC1), Togo\_79 (DC1), Twister6\_80 (DC1), Valary\_80 (DC1), VanDeWege\_82 (DC1), Wizard\_76 (DC1), YungMoney\_78 (DC1),

Start 20:

- Found in 1 of 35 ( 2.9% ) of genes in pham
- Manual Annotations of this start: 1 of 30
- Called 100.0% of time when present
- Phage (with cluster) where this start called: Kromp\_24 (singleton),

### Summary by clusters:

There are 5 clusters represented in this pham: DJ, singleton, DC2, AT, DC1,

Info for manual annotations of cluster AT:

- Start number 17 was manually annotated 3 times for cluster AT.

Info for manual annotations of cluster DC1:

- Start number 17 was manually annotated 23 times for cluster DC1.

Info for manual annotations of cluster DC2:

- Start number 17 was manually annotated 1 time for cluster DC2.

Info for manual annotations of cluster DJ:

- Start number 13 was manually annotated 2 times for cluster DJ.

### Gene Information:

Gene: Bakery\_84 Start: 55024, Stop: 55362, Start Num: 17

Candidate Starts for Bakery\_84:

(3, 54715), (4, 54733), (10, 54826), (Start: 17 @55024 has 27 MA's), (21, 55117), (33, 55180), (34, 55183), (46, 55342),

Gene: BeatusComedenti\_12 Start: 5593, Stop: 5973, Start Num: 17

Candidate Starts for BeatusComedenti\_12:

(Start: 17 @5593 has 27 MA's), (29, 5710), (30, 5731), (41, 5875), (45, 5914), (46, 5953),

Gene: CherryCola\_80 Start: 53272, Stop: 53610, Start Num: 17

Candidate Starts for CherryCola\_80:

(3, 52963), (4, 52981), (10, 53074), (Start: 17 @53272 has 27 MA's), (21, 53365), (33, 53428), (34, 53431), (46, 53590),

Gene: Clown\_85 Start: 54601, Stop: 55038, Start Num: 17

Candidate Starts for Clown\_85:

(Start: 17 @54601 has 27 MA's), (22, 54703), (25, 54739), (31, 54823), (37, 54865), (39, 54883), (41, 54955), (44, 54982), (46, 55018),

Gene: CoveyB\_80 Start: 52764, Stop: 53102, Start Num: 17

Candidate Starts for CoveyB\_80:

(3, 52455), (4, 52473), (10, 52566), (Start: 17 @52764 has 27 MA's), (21, 52857), (33, 52920), (34, 52923), (46, 53082),

Gene: Crocheter\_1 Start: 152, Stop: 469, Start Num: 13

Candidate Starts for Crocheter\_1:

(Start: 13 @152 has 2 MA's), (14, 197), (16, 212), (37, 395), (38, 410),

Gene: Danyall\_80 Start: 52458, Stop: 52796, Start Num: 17

Candidate Starts for Danyall\_80:

(4, 52167), (10, 52260), (Start: 17 @52458 has 27 MA's), (21, 52551), (33, 52614), (34, 52617), (46, 52776),

Gene: Egi03\_79 Start: 52324, Stop: 52662, Start Num: 17

Candidate Starts for Egi03\_79:

(2, 51808), (3, 52015), (4, 52033), (10, 52126), (Start: 17 @52324 has 27 MA's), (21, 52417), (33, 52480), (34, 52483), (46, 52642),

Gene: Evamon\_79 Start: 52689, Stop: 53027, Start Num: 17

Candidate Starts for Evamon\_79:

(1, 52059), (3, 52380), (4, 52398), (10, 52491), (Start: 17 @52689 has 27 MA's), (21, 52782), (33, 52845), (34, 52848), (46, 53007),

Gene: Gezellig\_79 Start: 52517, Stop: 52855, Start Num: 17

Candidate Starts for Gezellig\_79:

(3, 52208), (4, 52226), (10, 52319), (Start: 17 @52517 has 27 MA's), (21, 52610), (33, 52673), (34, 52676), (46, 52835),

Gene: Halo3\_77 Start: 53102, Stop: 53440, Start Num: 17

Candidate Starts for Halo3\_77:

(3, 52793), (4, 52811), (10, 52904), (Start: 17 @53102 has 27 MA's), (21, 53195), (33, 53258), (34, 53261), (46, 53420),

Gene: Jambalaya\_76 Start: 51745, Stop: 52182, Start Num: 17  
Candidate Starts for Jambalaya\_76:  
(Start: 17 @51745 has 27 MA's), (22, 51847), (23, 51859), (25, 51874), (32, 51967), (35, 51991), (36, 51997), (46, 52162),

Gene: KellEzio\_12 Start: 5595, Stop: 5975, Start Num: 17  
Candidate Starts for KellEzio\_12:  
(Start: 17 @5595 has 27 MA's), (29, 5712), (30, 5733), (41, 5877), (43, 5904), (45, 5916), (46, 5955),

Gene: KimmyK\_79 Start: 52964, Stop: 53302, Start Num: 17  
Candidate Starts for KimmyK\_79:  
(3, 52655), (4, 52673), (10, 52766), (Start: 17 @52964 has 27 MA's), (21, 53057), (33, 53120), (34, 53123), (46, 53282),

Gene: Kitkat\_13 Start: 5719, Stop: 6099, Start Num: 17  
Candidate Starts for Kitkat\_13:  
(Start: 17 @5719 has 27 MA's), (29, 5836), (30, 5857), (41, 6001), (45, 6040), (46, 6079),

Gene: Kromp\_24 Start: 21907, Stop: 22215, Start Num: 20  
Candidate Starts for Kromp\_24:  
(8, 21604), (12, 21637), (15, 21817), (Start: 20 @21907 has 1 MA's), (24, 21934), (27, 21961), (40, 22093), (42, 22159),

Gene: Mutzi\_77 Start: 53222, Stop: 53563, Start Num: 17  
Candidate Starts for Mutzi\_77:  
(3, 52913), (4, 52931), (10, 53024), (Start: 17 @53222 has 27 MA's), (21, 53315), (33, 53378), (34, 53381), (46, 53543),

Gene: Nubi\_81 Start: 52625, Stop: 53056, Start Num: 17  
Candidate Starts for Nubi\_81:  
(Start: 17 @52625 has 27 MA's), (18, 52652), (19, 52655), (22, 52727), (25, 52763), (26, 52784), (28, 52796), (31, 52847), (33, 52859), (37, 52889), (46, 53036),

Gene: Phlop\_77 Start: 52567, Stop: 52905, Start Num: 17  
Candidate Starts for Phlop\_77:  
(3, 52258), (4, 52276), (10, 52369), (Start: 17 @52567 has 27 MA's), (21, 52660), (33, 52723), (34, 52726), (46, 52885),

Gene: PinkCoffee\_81 Start: 52499, Stop: 52939, Start Num: 17  
Candidate Starts for PinkCoffee\_81:  
(4, 52208), (Start: 17 @52499 has 27 MA's), (25, 52637), (28, 52670), (31, 52721), (33, 52733), (37, 52763), (46, 52919),

Gene: Portcullis\_80 Start: 52573, Stop: 52911, Start Num: 17  
Candidate Starts for Portcullis\_80:  
(3, 52324), (4, 52342), (5, 52363), (6, 52384), (9, 52417), (10, 52432), (Start: 17 @52573 has 27 MA's), (21, 52666), (33, 52729), (34, 52732), (46, 52891),

Gene: PullumCavea\_78 Start: 52744, Stop: 53082, Start Num: 17  
Candidate Starts for PullumCavea\_78:  
(3, 52435), (4, 52453), (10, 52546), (Start: 17 @52744 has 27 MA's), (21, 52837), (33, 52900), (34, 52903), (46, 53062),

Gene: RogerDodger\_83 Start: 53332, Stop: 53670, Start Num: 17  
Candidate Starts for RogerDodger\_83:  
(3, 53023), (4, 53041), (10, 53134), (Start: 17 @53332 has 27 MA's), (21, 53425), (33, 53488), (34, 53491), (46, 53650),

Gene: Salvador\_79 Start: 52687, Stop: 53025, Start Num: 17  
Candidate Starts for Salvador\_79:  
(1, 52057), (3, 52378), (4, 52396), (10, 52489), (Start: 17 @52687 has 27 MA's), (21, 52780), (33, 52843), (34, 52846), (46, 53005),

Gene: Savbucketdawg\_75 Start: 52079, Stop: 52519, Start Num: 17  
Candidate Starts for Savbucketdawg\_75:  
(3, 51770), (4, 51788), (10, 51881), (Start: 17 @52079 has 27 MA's), (25, 52217), (28, 52250), (31, 52301), (33, 52313), (37, 52343), (46, 52499),

Gene: Shinji\_79 Start: 52690, Stop: 53028, Start Num: 17  
Candidate Starts for Shinji\_79:  
(7, 52456), (10, 52483), (11, 52486), (Start: 17 @52690 has 27 MA's), (21, 52783), (33, 52846), (34, 52849), (46, 53008),

Gene: SmokingBunny\_80 Start: 53683, Stop: 54021, Start Num: 17  
Candidate Starts for SmokingBunny\_80:  
(1, 53053), (3, 53374), (4, 53392), (10, 53485), (Start: 17 @53683 has 27 MA's), (21, 53776), (33, 53839), (34, 53842), (46, 54001),

Gene: TillyBobJoe\_77 Start: 52709, Stop: 53059, Start Num: 17  
Candidate Starts for TillyBobJoe\_77:  
(3, 52400), (4, 52418), (10, 52511), (Start: 17 @52709 has 27 MA's), (33, 52865), (34, 52868), (46, 53039),

Gene: Togo\_79 Start: 53683, Stop: 54021, Start Num: 17  
Candidate Starts for Togo\_79:  
(1, 53053), (3, 53374), (4, 53392), (10, 53485), (Start: 17 @53683 has 27 MA's), (21, 53776), (33, 53839), (34, 53842), (46, 54001),

Gene: Twister6\_80 Start: 52032, Stop: 52370, Start Num: 17  
Candidate Starts for Twister6\_80:  
(1, 51402), (3, 51723), (4, 51741), (10, 51834), (Start: 17 @52032 has 27 MA's), (21, 52125), (33, 52188), (34, 52191), (46, 52350),

Gene: Untouchable\_1 Start: 152, Stop: 469, Start Num: 13  
Candidate Starts for Untouchable\_1:  
(Start: 13 @152 has 2 MA's), (14, 197), (16, 212), (37, 395), (38, 410),

Gene: Valary\_80 Start: 53339, Stop: 53767, Start Num: 17  
Candidate Starts for Valary\_80:  
(3, 53030), (4, 53048), (10, 53141), (Start: 17 @53339 has 27 MA's), (25, 53477), (26, 53498), (31, 53561), (33, 53573), (37, 53603), (46, 53747),

Gene: VanDeWege\_82 Start: 53340, Stop: 53690, Start Num: 17  
Candidate Starts for VanDeWege\_82:  
(7, 53106), (10, 53133), (11, 53136), (Start: 17 @53340 has 27 MA's), (33, 53496), (34, 53499), (46, 53670),

Gene: Wizard\_76 Start: 52517, Stop: 52855, Start Num: 17

Candidate Starts for Wizard\_76:

(3, 52208), (4, 52226), (10, 52319), (Start: 17 @52517 has 27 MA's), (21, 52610), (33, 52673), (34, 52676), (46, 52835),

Gene: YungMoney\_78 Start: 54062, Stop: 54403, Start Num: 17

Candidate Starts for YungMoney\_78:

(3, 53753), (4, 53771), (10, 53864), (Start: 17 @54062 has 27 MA's), (21, 54155), (33, 54218), (34, 54221), (46, 54383),