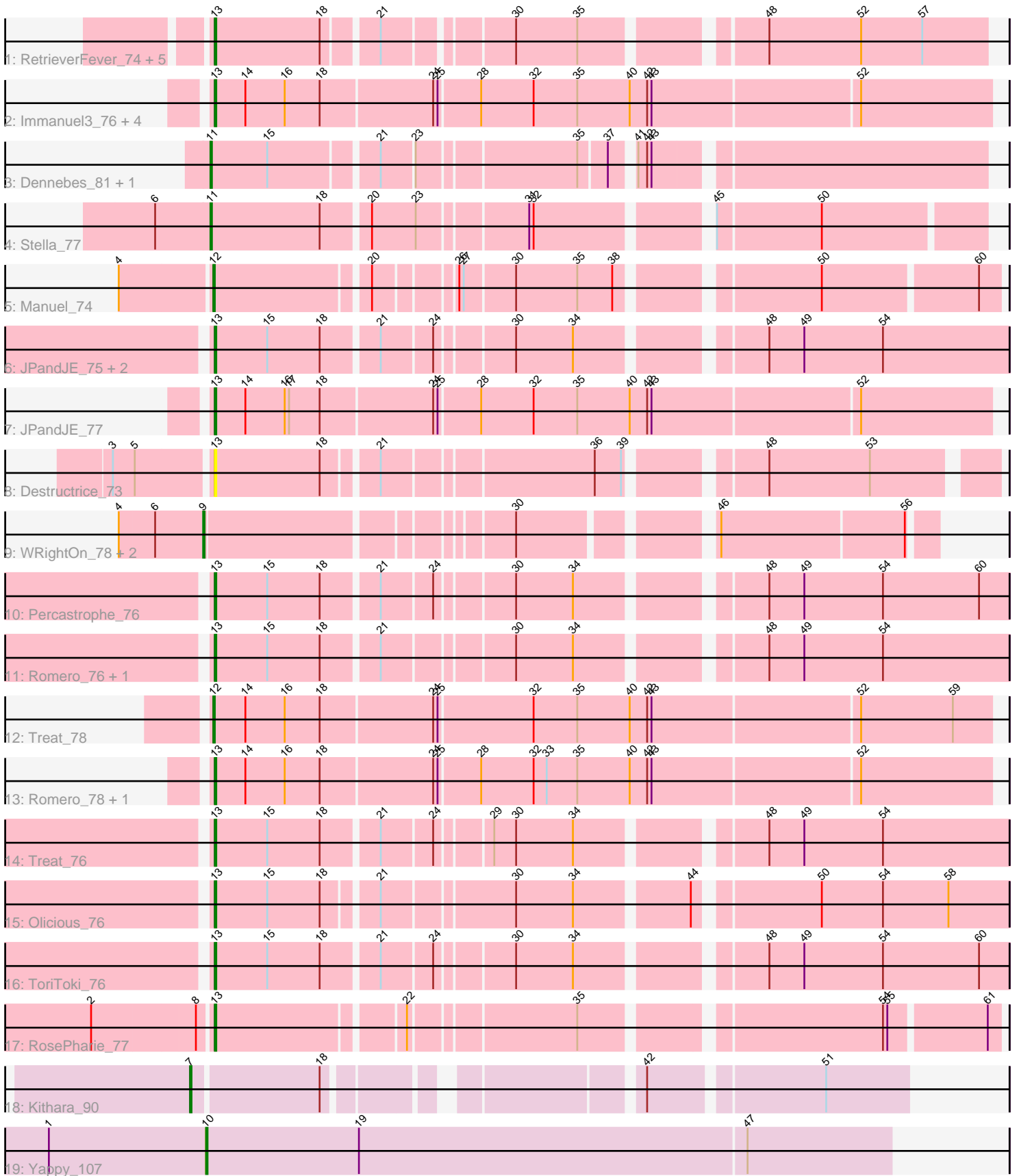


Pham 216376



Note: Tracks are now grouped by subcluster and scaled. Switching in subcluster is indicated by changes in track color. Track scale is now set by default to display the region 30 bp upstream of start 1 to 30 bp downstream of the last possible start. If this default region is judged to be packed too tightly with annotated starts, the track will be further scaled to only show that region of the ORF with annotated starts. This action will be indicated by adding "Zoomed" to the title. For starts, yellow indicates the location of called starts comprised solely of Glimmer/GeneMark auto-annotations, green indicates the location of called starts with at least 1 manual gene annotation.

Pham 216376 Report

This analysis was run 02/22/25 on database version 588.

Pham number 216376 has 35 members, 3 are drafts.

Phages represented in each track:

- Track 1 : RetrieverFever_74, Gremlin23_74, FlowerPower_74, Fabian_73, Geostin_69, Vorvolakos_75
- Track 2 : Immanuel3_76, Percastrophe_78, ZooBear_78, ToriToki_78, HaugeAnator_78
- Track 3 : Dennebes_81, Rideau_80
- Track 4 : Stella_77
- Track 5 : Manuel_74
- Track 6 : JPandJE_75, HaugeAnator_76, ZooBear_76
- Track 7 : JPandJE_77
- Track 8 : Destructrice_73
- Track 9 : WRightOn_78, Kumquat_74, Zeigle_74
- Track 10 : Percastrophe_76
- Track 11 : Romero_76, Immanuel3_74
- Track 12 : Treat_78
- Track 13 : Romero_78, Olicious_78
- Track 14 : Treat_76
- Track 15 : Olicious_76
- Track 16 : ToriToki_76
- Track 17 : RosePharie_77
- Track 18 : Kithara_90
- Track 19 : Yappy_107

Summary of Final Annotations (See graph section above for start numbers):

The start number called the most often in the published annotations is 13, it was called in 23 of the 32 non-draft genes in the pham.

Genes that call this "Most Annotated" start:

- Destructrice_73, Fabian_73, FlowerPower_74, Geostin_69, Gremlin23_74, HaugeAnator_76, HaugeAnator_78, Immanuel3_74, Immanuel3_76, JPandJE_75, JPandJE_77, Olicious_76, Olicious_78, Percastrophe_76, Percastrophe_78, RetrieverFever_74, Romero_76, Romero_78, RosePharie_77, ToriToki_76, ToriToki_78, Treat_76, Vorvolakos_75, ZooBear_76, ZooBear_78,

Genes that have the "Most Annotated" start but do not call it:

-

Genes that do not have the "Most Annotated" start:

- Dennebes_81, Kithara_90, Kumquat_74, Manuel_74, Rideau_80, Stella_77, Treat_78, WRightOn_78, Yappy_107, Zeigle_74,

Summary by start number:

Start 7:

- Found in 1 of 35 (2.9%) of genes in pham
- Manual Annotations of this start: 1 of 32
- Called 100.0% of time when present
- Phage (with cluster) where this start called: Kithara_90 (singleton),

Start 9:

- Found in 3 of 35 (8.6%) of genes in pham
- Manual Annotations of this start: 3 of 32
- Called 100.0% of time when present
- Phage (with cluster) where this start called: Kumquat_74 (BF), WRightOn_78 (BF), Zeigle_74 (BF),

Start 10:

- Found in 1 of 35 (2.9%) of genes in pham
- Manual Annotations of this start: 1 of 32
- Called 100.0% of time when present
- Phage (with cluster) where this start called: Yappy_107 (singleton),

Start 11:

- Found in 3 of 35 (8.6%) of genes in pham
- Manual Annotations of this start: 2 of 32
- Called 100.0% of time when present
- Phage (with cluster) where this start called: Dennebes_81 (BF), Rideau_80 (BF), Stella_77 (BF),

Start 12:

- Found in 2 of 35 (5.7%) of genes in pham
- Manual Annotations of this start: 2 of 32
- Called 100.0% of time when present
- Phage (with cluster) where this start called: Manuel_74 (BF), Treat_78 (BF),

Start 13:

- Found in 25 of 35 (71.4%) of genes in pham
- Manual Annotations of this start: 23 of 32
- Called 100.0% of time when present
- Phage (with cluster) where this start called: Destructrice_73 (BF), Fabian_73 (BF), FlowerPower_74 (BF), Geostin_69 (BF), Gremlin23_74 (BF), HaugeAnator_76 (BF), HaugeAnator_78 (BF), Immanuel3_74 (BF), Immanuel3_76 (BF), JPandJE_75 (BF), JPandJE_77 (BF), Olacious_76 (BF), Olacious_78 (BF), Percastrophe_76 (BF), Percastrophe_78 (BF), RetrieverFever_74 (BF), Romero_76 (BF), Romero_78 (BF), RosePharie_77 (BF), ToriToki_76 (BF), ToriToki_78 (BF), Treat_76 (BF), Vorvolakos_75 (BF), ZooBear_76 (BF), ZooBear_78 (BF),

Summary by clusters:

There are 2 clusters represented in this pham: BF, singleton,

Info for manual annotations of cluster BF:

- Start number 9 was manually annotated 3 times for cluster BF.
- Start number 11 was manually annotated 2 times for cluster BF.
- Start number 12 was manually annotated 2 times for cluster BF.
- Start number 13 was manually annotated 23 times for cluster BF.

Gene Information:

Gene: Dennebes_81 Start: 39474, Stop: 38989, Start Num: 11

Candidate Starts for Dennebes_81:

(Start: 11 @39474 has 2 MA's), (15, 39435), (21, 39366), (23, 39345), (35, 39243), (37, 39225), (41, 39213), (42, 39207), (43, 39204),

Gene: Destructrice_73 Start: 38837, Stop: 38355, Start Num: 13

Candidate Starts for Destructrice_73:

(3, 38900), (5, 38885), (Start: 13 @38837 has 23 MA's), (18, 38765), (21, 38732), (36, 38597), (39, 38579), (48, 38501), (53, 38432),

Gene: Fabian_73 Start: 38951, Stop: 38469, Start Num: 13

Candidate Starts for Fabian_73:

(Start: 13 @38951 has 23 MA's), (18, 38879), (21, 38846), (30, 38768), (35, 38726), (48, 38618), (52, 38555), (57, 38513),

Gene: FlowerPower_74 Start: 38621, Stop: 38139, Start Num: 13

Candidate Starts for FlowerPower_74:

(Start: 13 @38621 has 23 MA's), (18, 38549), (21, 38516), (30, 38438), (35, 38396), (48, 38288), (52, 38225), (57, 38183),

Gene: Geostin_69 Start: 38621, Stop: 38139, Start Num: 13

Candidate Starts for Geostin_69:

(Start: 13 @38621 has 23 MA's), (18, 38549), (21, 38516), (30, 38438), (35, 38396), (48, 38288), (52, 38225), (57, 38183),

Gene: Gremlin23_74 Start: 38621, Stop: 38139, Start Num: 13

Candidate Starts for Gremlin23_74:

(Start: 13 @38621 has 23 MA's), (18, 38549), (21, 38516), (30, 38438), (35, 38396), (48, 38288), (52, 38225), (57, 38183),

Gene: HaugeAnator_76 Start: 38999, Stop: 38496, Start Num: 13

Candidate Starts for HaugeAnator_76:

(Start: 13 @38999 has 23 MA's), (15, 38963), (18, 38927), (21, 38891), (24, 38858), (30, 38810), (34, 38771), (48, 38660), (49, 38636), (54, 38582),

Gene: HaugeAnator_78 Start: 40177, Stop: 39656, Start Num: 13

Candidate Starts for HaugeAnator_78:

(Start: 13 @40177 has 23 MA's), (14, 40156), (16, 40129), (18, 40105), (24, 40030), (25, 40027), (28, 40000), (32, 39964), (35, 39934), (40, 39898), (42, 39886), (43, 39883), (52, 39745),

Gene: Immanuel3_76 Start: 40182, Stop: 39661, Start Num: 13

Candidate Starts for Immanuel3_76:

(Start: 13 @40182 has 23 MA's), (14, 40161), (16, 40134), (18, 40110), (24, 40035), (25, 40032), (28, 40005), (32, 39969), (35, 39939), (40, 39903), (42, 39891), (43, 39888), (52, 39750),

Gene: Immanuel3_74 Start: 39005, Stop: 38502, Start Num: 13

Candidate Starts for Immanuel3_74:

(Start: 13 @39005 has 23 MA's), (15, 38969), (18, 38933), (21, 38897), (30, 38816), (34, 38777), (48, 38666), (49, 38642), (54, 38588),

Gene: JPandJE_75 Start: 39350, Stop: 38847, Start Num: 13

Candidate Starts for JPandJE_75:

(Start: 13 @39350 has 23 MA's), (15, 39314), (18, 39278), (21, 39242), (24, 39209), (30, 39161), (34, 39122), (48, 39011), (49, 38987), (54, 38933),

Gene: JPandJE_77 Start: 40528, Stop: 40007, Start Num: 13

Candidate Starts for JPandJE_77:

(Start: 13 @40528 has 23 MA's), (14, 40507), (16, 40480), (17, 40477), (18, 40456), (24, 40381), (25, 40378), (28, 40351), (32, 40315), (35, 40285), (40, 40249), (42, 40237), (43, 40234), (52, 40096),

Gene: Kithara_90 Start: 59830, Stop: 59399, Start Num: 7

Candidate Starts for Kithara_90:

(Start: 7 @59830 has 1 MA's), (18, 59746), (42, 59566), (51, 59455),

Gene: Kumquat_74 Start: 38229, Stop: 37786, Start Num: 9

Candidate Starts for Kumquat_74:

(4, 38286), (6, 38262), (Start: 9 @38229 has 3 MA's), (30, 38040), (46, 37926), (56, 37803),

Gene: Manuel_74 Start: 38664, Stop: 38179, Start Num: 12

Candidate Starts for Manuel_74:

(4, 38724), (Start: 12 @38664 has 2 MA's), (20, 38565), (26, 38517), (27, 38514), (30, 38481), (35, 38439), (38, 38415), (50, 38295), (60, 38193),

Gene: Olicious_78 Start: 40180, Stop: 39659, Start Num: 13

Candidate Starts for Olicious_78:

(Start: 13 @40180 has 23 MA's), (14, 40159), (16, 40132), (18, 40108), (24, 40033), (25, 40030), (28, 40003), (32, 39967), (33, 39958), (35, 39937), (40, 39901), (42, 39889), (43, 39886), (52, 39748),

Gene: Olicious_76 Start: 39002, Stop: 38499, Start Num: 13

Candidate Starts for Olicious_76:

(Start: 13 @39002 has 23 MA's), (15, 38966), (18, 38930), (21, 38897), (30, 38813), (34, 38774), (44, 38702), (50, 38627), (54, 38585), (58, 38540),

Gene: Percastrophe_78 Start: 40112, Stop: 39591, Start Num: 13

Candidate Starts for Percastrophe_78:

(Start: 13 @40112 has 23 MA's), (14, 40091), (16, 40064), (18, 40040), (24, 39965), (25, 39962), (28, 39935), (32, 39899), (35, 39869), (40, 39833), (42, 39821), (43, 39818), (52, 39680),

Gene: Percastrophe_76 Start: 38934, Stop: 38431, Start Num: 13

Candidate Starts for Percastrophe_76:

(Start: 13 @38934 has 23 MA's), (15, 38898), (18, 38862), (21, 38826), (24, 38793), (30, 38745), (34, 38706), (48, 38595), (49, 38571), (54, 38517), (60, 38451),

Gene: RetrieverFever_74 Start: 38621, Stop: 38139, Start Num: 13

Candidate Starts for RetrieverFever_74:

(Start: 13 @38621 has 23 MA's), (18, 38549), (21, 38516), (30, 38438), (35, 38396), (48, 38288), (52, 38225), (57, 38183),

Gene: Rideau_80 Start: 39365, Stop: 38880, Start Num: 11

Candidate Starts for Rideau_80:

(Start: 11 @39365 has 2 MA's), (15, 39326), (21, 39257), (23, 39236), (35, 39134), (37, 39116), (41, 39104), (42, 39098), (43, 39095),

Gene: Romero_76 Start: 38995, Stop: 38492, Start Num: 13

Candidate Starts for Romero_76:

(Start: 13 @38995 has 23 MA's), (15, 38959), (18, 38923), (21, 38887), (30, 38806), (34, 38767), (48, 38656), (49, 38632), (54, 38578),

Gene: Romero_78 Start: 40173, Stop: 39652, Start Num: 13

Candidate Starts for Romero_78:

(Start: 13 @40173 has 23 MA's), (14, 40152), (16, 40125), (18, 40101), (24, 40026), (25, 40023), (28, 39996), (32, 39960), (33, 39951), (35, 39930), (40, 39894), (42, 39882), (43, 39879), (52, 39741),

Gene: RosePharie_77 Start: 39114, Stop: 38629, Start Num: 13

Candidate Starts for RosePharie_77:

(2, 39192), (8, 39123), (Start: 13 @39114 has 23 MA's), (22, 38994), (35, 38889), (54, 38703), (55, 38700), (61, 38637),

Gene: Stella_77 Start: 39604, Stop: 39116, Start Num: 11

Candidate Starts for Stella_77:

(6, 39637), (Start: 11 @39604 has 2 MA's), (18, 39529), (20, 39499), (23, 39469), (31, 39400), (32, 39397), (45, 39292), (50, 39223),

Gene: ToriToki_76 Start: 38998, Stop: 38495, Start Num: 13

Candidate Starts for ToriToki_76:

(Start: 13 @38998 has 23 MA's), (15, 38962), (18, 38926), (21, 38890), (24, 38857), (30, 38809), (34, 38770), (48, 38659), (49, 38635), (54, 38581), (60, 38515),

Gene: ToriToki_78 Start: 40176, Stop: 39655, Start Num: 13

Candidate Starts for ToriToki_78:

(Start: 13 @40176 has 23 MA's), (14, 40155), (16, 40128), (18, 40104), (24, 40029), (25, 40026), (28, 39999), (32, 39963), (35, 39933), (40, 39897), (42, 39885), (43, 39882), (52, 39744),

Gene: Treat_78 Start: 40051, Stop: 39530, Start Num: 12

Candidate Starts for Treat_78:

(Start: 12 @40051 has 2 MA's), (14, 40030), (16, 40003), (18, 39979), (24, 39904), (25, 39901), (32, 39838), (35, 39808), (40, 39772), (42, 39760), (43, 39757), (52, 39619), (59, 39556),

Gene: Treat_76 Start: 38873, Stop: 38370, Start Num: 13

Candidate Starts for Treat_76:

(Start: 13 @38873 has 23 MA's), (15, 38837), (18, 38801), (21, 38765), (24, 38732), (29, 38699), (30, 38684), (34, 38645), (48, 38534), (49, 38510), (54, 38456),

Gene: Vorvolakos_75 Start: 38620, Stop: 38138, Start Num: 13

Candidate Starts for Vorvolakos_75:

(Start: 13 @38620 has 23 MA's), (18, 38548), (21, 38515), (30, 38437), (35, 38395), (48, 38287), (52, 38224), (57, 38182),

Gene: WRightOn_78 Start: 38385, Stop: 37942, Start Num: 9

Candidate Starts for WRightOn_78:

(4, 38442), (6, 38418), (Start: 9 @38385 has 3 MA's), (30, 38196), (46, 38082), (56, 37959),

Gene: Yappy_107 Start: 55269, Stop: 54802, Start Num: 10

Candidate Starts for Yappy_107:

(1, 55377), (Start: 10 @55269 has 1 MA's), (19, 55164), (47, 54900),

Gene: Zeigle_74 Start: 38229, Stop: 37786, Start Num: 9

Candidate Starts for Zeigle_74:

(4, 38286), (6, 38262), (Start: 9 @38229 has 3 MA's), (30, 38040), (46, 37926), (56, 37803),

Gene: ZooBear_78 Start: 40177, Stop: 39656, Start Num: 13

Candidate Starts for ZooBear_78:

(Start: 13 @40177 has 23 MA's), (14, 40156), (16, 40129), (18, 40105), (24, 40030), (25, 40027), (28, 40000), (32, 39964), (35, 39934), (40, 39898), (42, 39886), (43, 39883), (52, 39745),

Gene: ZooBear_76 Start: 38999, Stop: 38496, Start Num: 13

Candidate Starts for ZooBear_76:

(Start: 13 @38999 has 23 MA's), (15, 38963), (18, 38927), (21, 38891), (24, 38858), (30, 38810), (34, 38771), (48, 38660), (49, 38636), (54, 38582),