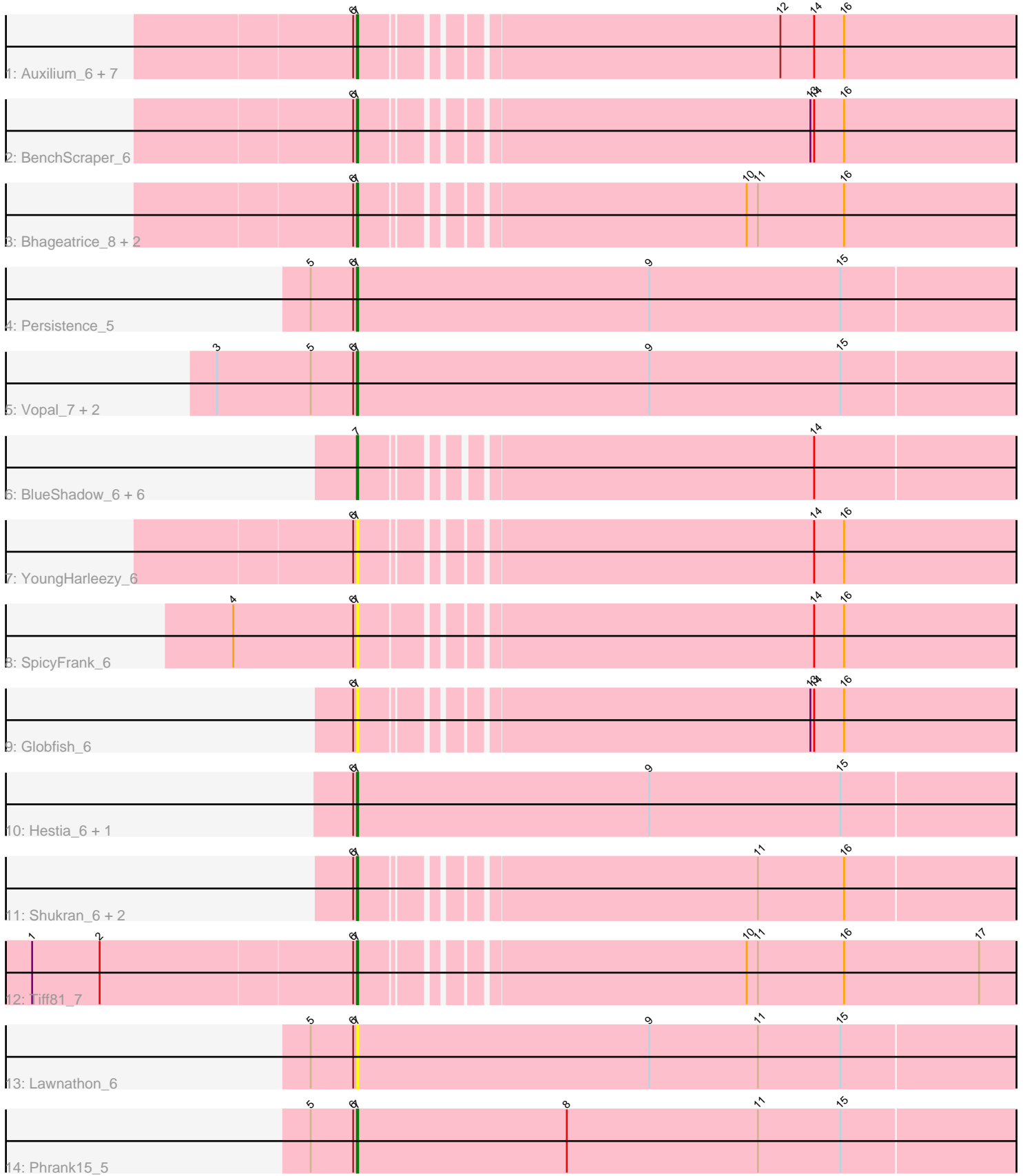


Pham 216383



Note: Tracks are now grouped by subcluster and scaled. Switching in subcluster is indicated by changes in track color. Track scale is now set by default to display the region 30 bp upstream of start 1 to 30 bp downstream of the last possible start. If this default region is judged to be packed too tightly with annotated starts, the track will be further scaled to only show that region of the ORF with annotated starts. This action will be indicated by adding "Zoomed" to the title. For starts, yellow indicates the location of called starts comprised solely of Glimmer/GeneMark auto-annotations, green indicates the location of called starts with at least 1 manual gene annotation.

Pham 216383 Report

This analysis was run 02/22/25 on database version 588.

Pham number 216383 has 34 members, 18 are drafts.

Phages represented in each track:

- Track 1 : Auxilium_6, MUWow_5, Richie_6, JellyBread_6, AdaS_6, BillyTP_6, Raphaella_6, CookieBear_6
- Track 2 : BenchScraper_6
- Track 3 : Bhageatrice_8, Gorpy_6, Sakai_6
- Track 4 : Persistence_5
- Track 5 : Vopal_7, Isolde_7, Windest_7
- Track 6 : BlueShadow_6, Faja_6, MidnightRain_6, RadFad_6, Aikyam_6, MaterMagnus_6, Hillester_6
- Track 7 : YoungHarleezy_6
- Track 8 : SpicyFrank_6
- Track 9 : Globfish_6
- Track 10 : Hestia_6, ThayneTheZag_6
- Track 11 : Shukran_6, EvePickles_6, Sashimi_7
- Track 12 : Tiff81_7
- Track 13 : Lawnathon_6
- Track 14 : Phrank15_5

Summary of Final Annotations (See graph section above for start numbers):

The start number called the most often in the published annotations is 7, it was called in 16 of the 16 non-draft genes in the pham.

Genes that call this "Most Annotated" start:

- AdaS_6, Aikyam_6, Auxilium_6, BenchScraper_6, Bhageatrice_8, BillyTP_6, BlueShadow_6, CookieBear_6, EvePickles_6, Faja_6, Globfish_6, Gorpy_6, Hestia_6, Hillester_6, Isolde_7, JellyBread_6, Lawnathon_6, MUWow_5, MaterMagnus_6, MidnightRain_6, Persistence_5, Phrank15_5, RadFad_6, Raphaella_6, Richie_6, Sakai_6, Sashimi_7, Shukran_6, SpicyFrank_6, ThayneTheZag_6, Tiff81_7, Vopal_7, Windest_7, YoungHarleezy_6,

Genes that have the "Most Annotated" start but do not call it:

-

Genes that do not have the "Most Annotated" start:

•

Summary by start number:

Start 7:

- Found in 34 of 34 (100.0%) of genes in pham
- Manual Annotations of this start: 16 of 16
- Called 100.0% of time when present
- Phage (with cluster) where this start called: AdaS_6 (AY), Aikyam_6 (AY), Auxilium_6 (AY), BenchScraper_6 (AY), Bhageatrice_8 (AY), BillyTP_6 (AY), BlueShadow_6 (AY), CookieBear_6 (AY), EvePickles_6 (AY), Faja_6 (AY), Globfish_6 (AY), Gorpy_6 (AY), Hestia_6 (AY), Hillester_6 (AY), Isolde_7 (AY), JellyBread_6 (AY), Lawnathon_6 (AY), MUWow_5 (AY), MaterMagnus_6 (AY), MidnightRain_6 (AY), Persistence_5 (AY), Phrank15_5 (AY), RadFad_6 (AY), Raphaella_6 (AY), Richie_6 (AY), Sakai_6 (AY), Sashimi_7 (AY), Shukran_6 (AY), SpicyFrank_6 (AY), ThayneTheZag_6 (AY), Tiff81_7 (AY), Vopal_7 (AY), Windest_7 (AY), YoungHarleezy_6 (AY),

Summary by clusters:

There is one cluster represented in this pham: AY

Info for manual annotations of cluster AY:

- Start number 7 was manually annotated 16 times for cluster AY.

Gene Information:

Gene: AdaS_6 Start: 4952, Stop: 5458, Start Num: 7

Candidate Starts for AdaS_6:

(6, 4949), (Start: 7 @4952 has 16 MA's), (12, 5261), (14, 5288), (16, 5312),

Gene: Aikyam_6 Start: 4944, Stop: 5444, Start Num: 7

Candidate Starts for Aikyam_6:

(Start: 7 @4944 has 16 MA's), (14, 5277),

Gene: Auxilium_6 Start: 4952, Stop: 5458, Start Num: 7

Candidate Starts for Auxilium_6:

(6, 4949), (Start: 7 @4952 has 16 MA's), (12, 5261), (14, 5288), (16, 5312),

Gene: BenchScraper_6 Start: 4952, Stop: 5458, Start Num: 7

Candidate Starts for BenchScraper_6:

(6, 4949), (Start: 7 @4952 has 16 MA's), (13, 5285), (14, 5288), (16, 5312),

Gene: Bhageatrice_8 Start: 6147, Stop: 6653, Start Num: 7

Candidate Starts for Bhageatrice_8:

(6, 6144), (Start: 7 @6147 has 16 MA's), (10, 6429), (11, 6438), (16, 6507),

Gene: BillyTP_6 Start: 4946, Stop: 5452, Start Num: 7

Candidate Starts for BillyTP_6:

(6, 4943), (Start: 7 @4946 has 16 MA's), (12, 5255), (14, 5282), (16, 5306),

Gene: BlueShadow_6 Start: 4944, Stop: 5447, Start Num: 7
Candidate Starts for BlueShadow_6:
(Start: 7 @4944 has 16 MA's), (14, 5277),

Gene: CookieBear_6 Start: 4952, Stop: 5458, Start Num: 7
Candidate Starts for CookieBear_6:
(6, 4949), (Start: 7 @4952 has 16 MA's), (12, 5261), (14, 5288), (16, 5312),

Gene: EvePickles_6 Start: 4997, Stop: 5500, Start Num: 7
Candidate Starts for EvePickles_6:
(6, 4994), (Start: 7 @4997 has 16 MA's), (11, 5288), (16, 5357),

Gene: Faja_6 Start: 4944, Stop: 5444, Start Num: 7
Candidate Starts for Faja_6:
(Start: 7 @4944 has 16 MA's), (14, 5277),

Gene: Globfish_6 Start: 4997, Stop: 5503, Start Num: 7
Candidate Starts for Globfish_6:
(6, 4994), (Start: 7 @4997 has 16 MA's), (13, 5330), (14, 5333), (16, 5357),

Gene: Gorpy_6 Start: 4946, Stop: 5452, Start Num: 7
Candidate Starts for Gorpy_6:
(6, 4943), (Start: 7 @4946 has 16 MA's), (10, 5228), (11, 5237), (16, 5306),

Gene: Hestia_6 Start: 5060, Stop: 5593, Start Num: 7
Candidate Starts for Hestia_6:
(6, 5057), (Start: 7 @5060 has 16 MA's), (9, 5294), (15, 5447),

Gene: Hillester_6 Start: 4944, Stop: 5447, Start Num: 7
Candidate Starts for Hillester_6:
(Start: 7 @4944 has 16 MA's), (14, 5277),

Gene: Isolde_7 Start: 4984, Stop: 5517, Start Num: 7
Candidate Starts for Isolde_7:
(3, 4873), (5, 4948), (6, 4981), (Start: 7 @4984 has 16 MA's), (9, 5218), (15, 5371),

Gene: JellyBread_6 Start: 4945, Stop: 5451, Start Num: 7
Candidate Starts for JellyBread_6:
(6, 4942), (Start: 7 @4945 has 16 MA's), (12, 5254), (14, 5281), (16, 5305),

Gene: Lawnathon_6 Start: 4996, Stop: 5529, Start Num: 7
Candidate Starts for Lawnathon_6:
(5, 4960), (6, 4993), (Start: 7 @4996 has 16 MA's), (9, 5230), (11, 5317), (15, 5383),

Gene: MUWow_5 Start: 5024, Stop: 5530, Start Num: 7
Candidate Starts for MUWow_5:
(6, 5021), (Start: 7 @5024 has 16 MA's), (12, 5333), (14, 5360), (16, 5384),

Gene: MaterMagnus_6 Start: 4944, Stop: 5444, Start Num: 7
Candidate Starts for MaterMagnus_6:
(Start: 7 @4944 has 16 MA's), (14, 5277),

Gene: MidnightRain_6 Start: 4944, Stop: 5447, Start Num: 7

Candidate Starts for MidnightRain_6:
(Start: 7 @4944 has 16 MA's), (14, 5277),

Gene: Persistence_5 Start: 5021, Stop: 5554, Start Num: 7
Candidate Starts for Persistence_5:
(5, 4985), (6, 5018), (Start: 7 @5021 has 16 MA's), (9, 5255), (15, 5408),

Gene: Phrank15_5 Start: 5067, Stop: 5600, Start Num: 7
Candidate Starts for Phrank15_5:
(5, 5031), (6, 5064), (Start: 7 @5067 has 16 MA's), (8, 5235), (11, 5388), (15, 5454),

Gene: RadFad_6 Start: 4944, Stop: 5447, Start Num: 7
Candidate Starts for RadFad_6:
(Start: 7 @4944 has 16 MA's), (14, 5277),

Gene: Raphaella_6 Start: 4952, Stop: 5458, Start Num: 7
Candidate Starts for Raphaella_6:
(6, 4949), (Start: 7 @4952 has 16 MA's), (12, 5261), (14, 5288), (16, 5312),

Gene: Richie_6 Start: 4952, Stop: 5458, Start Num: 7
Candidate Starts for Richie_6:
(6, 4949), (Start: 7 @4952 has 16 MA's), (12, 5261), (14, 5288), (16, 5312),

Gene: Sakai_6 Start: 4946, Stop: 5452, Start Num: 7
Candidate Starts for Sakai_6:
(6, 4943), (Start: 7 @4946 has 16 MA's), (10, 5228), (11, 5237), (16, 5306),

Gene: Sashimi_7 Start: 5113, Stop: 5619, Start Num: 7
Candidate Starts for Sashimi_7:
(6, 5110), (Start: 7 @5113 has 16 MA's), (11, 5404), (16, 5473),

Gene: Shukran_6 Start: 4951, Stop: 5457, Start Num: 7
Candidate Starts for Shukran_6:
(6, 4948), (Start: 7 @4951 has 16 MA's), (11, 5242), (16, 5311),

Gene: SpicyFrank_6 Start: 4997, Stop: 5506, Start Num: 7
Candidate Starts for SpicyFrank_6:
(4, 4898), (6, 4994), (Start: 7 @4997 has 16 MA's), (14, 5336), (16, 5360),

Gene: ThayneTheZag_6 Start: 4948, Stop: 5481, Start Num: 7
Candidate Starts for ThayneTheZag_6:
(6, 4945), (Start: 7 @4948 has 16 MA's), (9, 5182), (15, 5335),

Gene: Tiff81_7 Start: 5109, Stop: 5615, Start Num: 7
Candidate Starts for Tiff81_7:
(1, 4854), (2, 4908), (6, 5106), (Start: 7 @5109 has 16 MA's), (10, 5391), (11, 5400), (16, 5469), (17, 5577),

Gene: Vopal_7 Start: 4984, Stop: 5517, Start Num: 7
Candidate Starts for Vopal_7:
(3, 4873), (5, 4948), (6, 4981), (Start: 7 @4984 has 16 MA's), (9, 5218), (15, 5371),

Gene: Windest_7 Start: 4984, Stop: 5517, Start Num: 7

Candidate Starts for Windest_7:

(3, 4873), (5, 4948), (6, 4981), (Start: 7 @4984 has 16 MA's), (9, 5218), (15, 5371),

Gene: YoungHarleezy_6 Start: 4950, Stop: 5456, Start Num: 7

Candidate Starts for YoungHarleezy_6:

(6, 4947), (Start: 7 @4950 has 16 MA's), (14, 5286), (16, 5310),