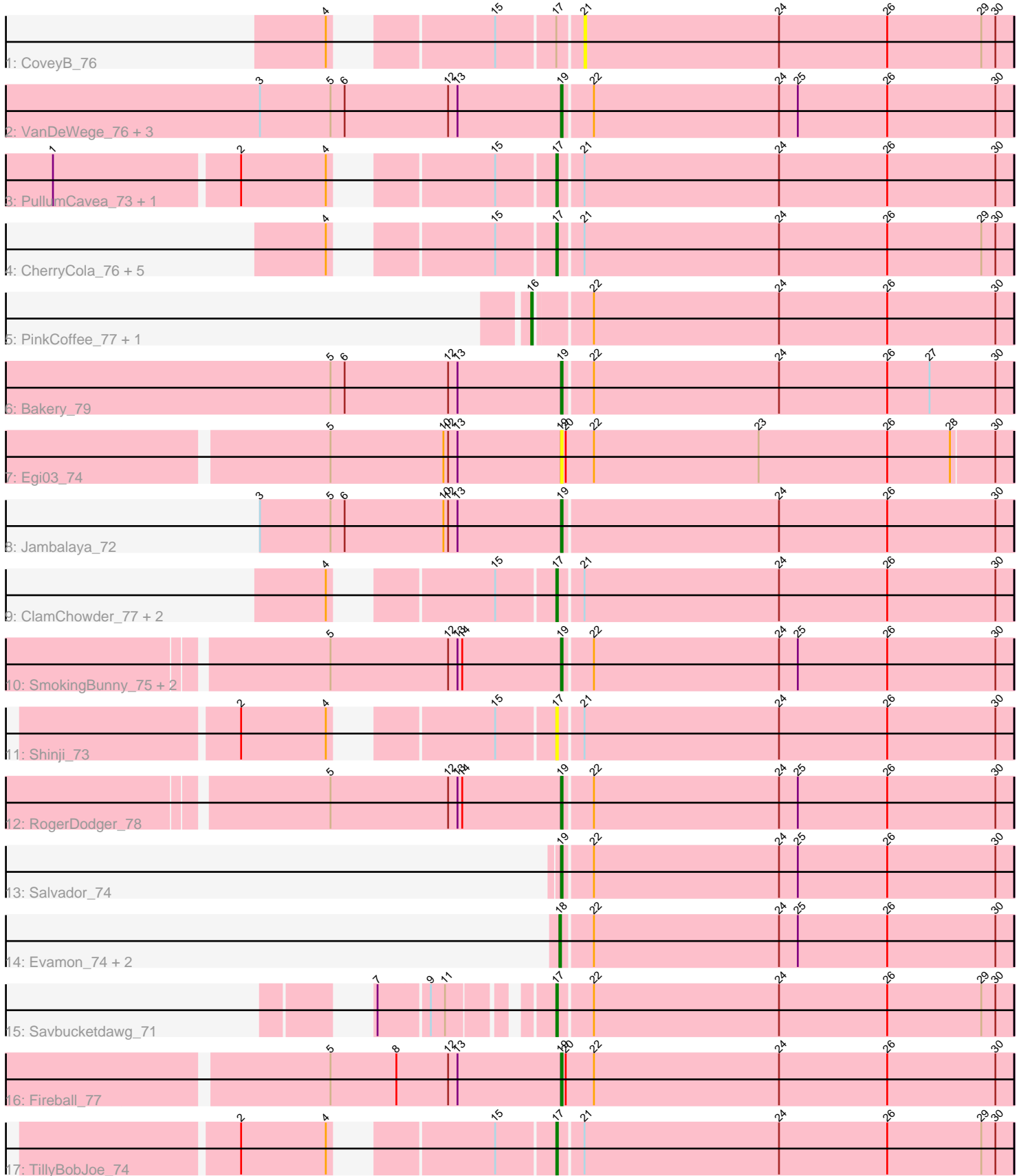


Pham 216396



Note: Tracks are now grouped by subcluster and scaled. Switching in subcluster is indicated by changes in track color. Track scale is now set by default to display the region 30 bp upstream of start 1 to 30 bp downstream of the last possible start. If this default region is judged to be packed too tightly with annotated starts, the track will be further scaled to only show that region of the ORF with annotated starts. This action will be indicated by adding "Zoomed" to the title. For starts, yellow indicates the location of called starts comprised solely of Glimmer/GeneMark auto-annotations, green indicates the location of called starts with at least 1 manual gene annotation.

Pham 216396 Report

This analysis was run 02/22/25 on database version 588.

Pham number 216396 has 33 members, 5 are drafts.

Phages represented in each track:

- Track 1 : CoveyB_76
- Track 2 : VanDeWege_76, Nubi_74, Portcullis_75, Arri_75
- Track 3 : PullumCavea_73, Phlop_72
- Track 4 : CherryCola_76, Valary_76, Gezellig_75, KimmyK_75, Halo3_73, Wizard_72
- Track 5 : PinkCoffee_77, Danyall_76
- Track 6 : Bakery_79
- Track 7 : Egi03_74
- Track 8 : Jambalaya_72
- Track 9 : ClamChowder_77, Fugax_78, Barb_77
- Track 10 : SmokingBunny_75, Togo_74, Twister6_75
- Track 11 : Shinji_73
- Track 12 : RogerDodger_78
- Track 13 : Salvador_74
- Track 14 : Evamon_74, Mutzi_73, YungMoney_74
- Track 15 : Savbucketdawg_71
- Track 16 : Fireball_77
- Track 17 : TillyBobJoe_74

Summary of Final Annotations (See graph section above for start numbers):

The start number called the most often in the published annotations is 19, it was called in 12 of the 28 non-draft genes in the pham.

Genes that call this "Most Annotated" start:

- Arri_75, Bakery_79, Egi03_74, Fireball_77, Jambalaya_72, Nubi_74, Portcullis_75, RogerDodger_78, Salvador_74, SmokingBunny_75, Togo_74, Twister6_75, VanDeWege_76,

Genes that have the "Most Annotated" start but do not call it:

-

Genes that do not have the "Most Annotated" start:

- Barb_77, CherryCola_76, ClamChowder_77, CoveyB_76, Danyall_76, Evamon_74, Fugax_78, Gezellig_75, Halo3_73, KimmyK_75, Mutzi_73, Phlop_72, PinkCoffee_77, PullumCavea_73, Savbucketdawg_71, Shinji_73, TillyBobJoe_74, Valary_76, Wizard_72, YungMoney_74,

Summary by start number:

Start 16:

- Found in 2 of 33 (6.1%) of genes in pham
- Manual Annotations of this start: 2 of 28
- Called 100.0% of time when present
- Phage (with cluster) where this start called: Danyall_76 (DC1), PinkCoffee_77 (DC1),

Start 17:

- Found in 15 of 33 (45.5%) of genes in pham
- Manual Annotations of this start: 11 of 28
- Called 93.3% of time when present
- Phage (with cluster) where this start called: Barb_77 (DC1), CherryCola_76 (DC1), ClamChowder_77 (DC1), Fugax_78 (DC1), Gezellig_75 (DC1), Halo3_73 (DC1), KimmyK_75 (DC1), Phlop_72 (DC1), PullumCavea_73 (DC1), Savbucketdawg_71 (DC1), Shinji_73 (DC1), TillyBobJoe_74 (DC1), Valary_76 (DC1), Wizard_72 (DC1),

Start 18:

- Found in 3 of 33 (9.1%) of genes in pham
- Manual Annotations of this start: 3 of 28
- Called 100.0% of time when present
- Phage (with cluster) where this start called: Evamon_74 (DC1), Mutzi_73 (DC1), YungMoney_74 (DC1),

Start 19:

- Found in 13 of 33 (39.4%) of genes in pham
- Manual Annotations of this start: 12 of 28
- Called 100.0% of time when present
- Phage (with cluster) where this start called: Arri_75 (DC1), Bakery_79 (DC1), Egi03_74 (DC1), Fireball_77 (DC1), Jambalaya_72 (DC1), Nubi_74 (DC1), Portcullis_75 (DC1), RogerDodger_78 (DC1), Salvador_74 (DC1), SmokingBunny_75 (DC1), Togo_74 (DC1), Twister6_75 (DC1), VanDeWege_76 (DC1),

Start 21:

- Found in 14 of 33 (42.4%) of genes in pham
- No Manual Annotations of this start.
- Called 7.1% of time when present
- Phage (with cluster) where this start called: CoveyB_76 (DC1),

Summary by clusters:

There is one cluster represented in this pham: DC1

Info for manual annotations of cluster DC1:

- Start number 16 was manually annotated 2 times for cluster DC1.
- Start number 17 was manually annotated 11 times for cluster DC1.
- Start number 18 was manually annotated 3 times for cluster DC1.

- Start number 19 was manually annotated 12 times for cluster DC1.

Gene Information:

Gene: Arri_75 Start: 50960, Stop: 51244, Start Num: 19

Candidate Starts for Arri_75:

(3, 50768), (5, 50813), (6, 50822), (12, 50888), (13, 50894), (Start: 19 @50960 has 12 MA's), (22, 50978), (24, 51095), (25, 51107), (26, 51164), (30, 51233),

Gene: Bakery_79 Start: 53229, Stop: 53513, Start Num: 19

Candidate Starts for Bakery_79:

(5, 53082), (6, 53091), (12, 53157), (13, 53163), (Start: 19 @53229 has 12 MA's), (22, 53247), (24, 53364), (26, 53433), (27, 53460), (30, 53502),

Gene: Barb_77 Start: 51072, Stop: 51359, Start Num: 17

Candidate Starts for Barb_77:

(4, 50958), (15, 51036), (Start: 17 @51072 has 11 MA's), (21, 51087), (24, 51210), (26, 51279), (30, 51348),

Gene: CherryCola_76 Start: 51462, Stop: 51749, Start Num: 17

Candidate Starts for CherryCola_76:

(4, 51348), (15, 51426), (Start: 17 @51462 has 11 MA's), (21, 51477), (24, 51600), (26, 51669), (29, 51729), (30, 51738),

Gene: ClamChowder_77 Start: 51072, Stop: 51359, Start Num: 17

Candidate Starts for ClamChowder_77:

(4, 50958), (15, 51036), (Start: 17 @51072 has 11 MA's), (21, 51087), (24, 51210), (26, 51279), (30, 51348),

Gene: CoveyB_76 Start: 50970, Stop: 51242, Start Num: 21

Candidate Starts for CoveyB_76:

(4, 50841), (15, 50919), (Start: 17 @50955 has 11 MA's), (21, 50970), (24, 51093), (26, 51162), (29, 51222), (30, 51231),

Gene: Danyall_76 Start: 51149, Stop: 51448, Start Num: 16

Candidate Starts for Danyall_76:

(Start: 16 @51149 has 2 MA's), (22, 51182), (24, 51299), (26, 51368), (30, 51437),

Gene: Egi03_74 Start: 50316, Stop: 50600, Start Num: 19

Candidate Starts for Egi03_74:

(5, 50169), (10, 50241), (12, 50244), (13, 50250), (Start: 19 @50316 has 12 MA's), (20, 50319), (22, 50337), (23, 50442), (26, 50523), (28, 50562), (30, 50589),

Gene: Evamon_74 Start: 50696, Stop: 50980, Start Num: 18

Candidate Starts for Evamon_74:

(Start: 18 @50696 has 3 MA's), (22, 50714), (24, 50831), (25, 50843), (26, 50900), (30, 50969),

Gene: Fireball_77 Start: 51365, Stop: 51652, Start Num: 19

Candidate Starts for Fireball_77:

(5, 51218), (8, 51260), (12, 51293), (13, 51299), (Start: 19 @51365 has 12 MA's), (20, 51368), (22, 51386), (24, 51503), (26, 51572), (30, 51641),

Gene: Fugax_78 Start: 51064, Stop: 51351, Start Num: 17

Candidate Starts for Fugax_78:

(4, 50950), (15, 51028), (Start: 17 @51064 has 11 MA's), (21, 51079), (24, 51202), (26, 51271), (30, 51340),

Gene: Gezellig_75 Start: 50708, Stop: 50995, Start Num: 17

Candidate Starts for Gezellig_75:

(4, 50594), (15, 50672), (Start: 17 @50708 has 11 MA's), (21, 50723), (24, 50846), (26, 50915), (29, 50975), (30, 50984),

Gene: Halo3_73 Start: 51293, Stop: 51580, Start Num: 17

Candidate Starts for Halo3_73:

(4, 51179), (15, 51257), (Start: 17 @51293 has 11 MA's), (21, 51308), (24, 51431), (26, 51500), (29, 51560), (30, 51569),

Gene: Jambalaya_72 Start: 50263, Stop: 50547, Start Num: 19

Candidate Starts for Jambalaya_72:

(3, 50071), (5, 50116), (6, 50125), (10, 50188), (12, 50191), (13, 50197), (Start: 19 @50263 has 12 MA's), (24, 50398), (26, 50467), (30, 50536),

Gene: KimmyK_75 Start: 51155, Stop: 51442, Start Num: 17

Candidate Starts for KimmyK_75:

(4, 51041), (15, 51119), (Start: 17 @51155 has 11 MA's), (21, 51170), (24, 51293), (26, 51362), (29, 51422), (30, 51431),

Gene: Mutzi_73 Start: 51788, Stop: 52072, Start Num: 18

Candidate Starts for Mutzi_73:

(Start: 18 @51788 has 3 MA's), (22, 51806), (24, 51923), (25, 51935), (26, 51992), (30, 52061),

Gene: Nubi_74 Start: 50588, Stop: 50872, Start Num: 19

Candidate Starts for Nubi_74:

(3, 50396), (5, 50441), (6, 50450), (12, 50516), (13, 50522), (Start: 19 @50588 has 12 MA's), (22, 50606), (24, 50723), (25, 50735), (26, 50792), (30, 50861),

Gene: Phlop_72 Start: 50577, Stop: 50864, Start Num: 17

Candidate Starts for Phlop_72:

(1, 50295), (2, 50409), (4, 50463), (15, 50541), (Start: 17 @50577 has 11 MA's), (21, 50592), (24, 50715), (26, 50784), (30, 50853),

Gene: PinkCoffee_77 Start: 51190, Stop: 51489, Start Num: 16

Candidate Starts for PinkCoffee_77:

(Start: 16 @51190 has 2 MA's), (22, 51223), (24, 51340), (26, 51409), (30, 51478),

Gene: Portcullis_75 Start: 50666, Stop: 50950, Start Num: 19

Candidate Starts for Portcullis_75:

(3, 50474), (5, 50519), (6, 50528), (12, 50594), (13, 50600), (Start: 19 @50666 has 12 MA's), (22, 50684), (24, 50801), (25, 50813), (26, 50870), (30, 50939),

Gene: PullumCavea_73 Start: 50754, Stop: 51041, Start Num: 17

Candidate Starts for PullumCavea_73:

(1, 50472), (2, 50586), (4, 50640), (15, 50718), (Start: 17 @50754 has 11 MA's), (21, 50769), (24, 50892), (26, 50961), (30, 51030),

Gene: RogerDodger_78 Start: 51852, Stop: 52136, Start Num: 19

Candidate Starts for RogerDodger_78:

(5, 51705), (12, 51780), (13, 51786), (14, 51789), (Start: 19 @51852 has 12 MA's), (22, 51870), (24, 51987), (25, 51999), (26, 52056), (30, 52125),

Gene: Salvador_74 Start: 50694, Stop: 50978, Start Num: 19

Candidate Starts for Salvador_74:

(Start: 19 @50694 has 12 MA's), (22, 50712), (24, 50829), (25, 50841), (26, 50898), (30, 50967),

Gene: Savbucketdawg_71 Start: 50270, Stop: 50557, Start Num: 17

Candidate Starts for Savbucketdawg_71:

(7, 50180), (9, 50210), (11, 50219), (Start: 17 @50270 has 11 MA's), (22, 50291), (24, 50408), (26, 50477), (29, 50537), (30, 50546),

Gene: Shinji_73 Start: 50358, Stop: 50645, Start Num: 17

Candidate Starts for Shinji_73:

(2, 50190), (4, 50244), (15, 50322), (Start: 17 @50358 has 11 MA's), (21, 50373), (24, 50496), (26, 50565), (30, 50634),

Gene: SmokingBunny_75 Start: 51690, Stop: 51974, Start Num: 19

Candidate Starts for SmokingBunny_75:

(5, 51543), (12, 51618), (13, 51624), (14, 51627), (Start: 19 @51690 has 12 MA's), (22, 51708), (24, 51825), (25, 51837), (26, 51894), (30, 51963),

Gene: TillyBobJoe_74 Start: 50884, Stop: 51171, Start Num: 17

Candidate Starts for TillyBobJoe_74:

(2, 50716), (4, 50770), (15, 50848), (Start: 17 @50884 has 11 MA's), (21, 50899), (24, 51022), (26, 51091), (29, 51151), (30, 51160),

Gene: Togo_74 Start: 51690, Stop: 51974, Start Num: 19

Candidate Starts for Togo_74:

(5, 51543), (12, 51618), (13, 51624), (14, 51627), (Start: 19 @51690 has 12 MA's), (22, 51708), (24, 51825), (25, 51837), (26, 51894), (30, 51963),

Gene: Twister6_75 Start: 50039, Stop: 50323, Start Num: 19

Candidate Starts for Twister6_75:

(5, 49892), (12, 49967), (13, 49973), (14, 49976), (Start: 19 @50039 has 12 MA's), (22, 50057), (24, 50174), (25, 50186), (26, 50243), (30, 50312),

Gene: Valary_76 Start: 51530, Stop: 51817, Start Num: 17

Candidate Starts for Valary_76:

(4, 51416), (15, 51494), (Start: 17 @51530 has 11 MA's), (21, 51545), (24, 51668), (26, 51737), (29, 51797), (30, 51806),

Gene: VanDeWege_76 Start: 51023, Stop: 51307, Start Num: 19

Candidate Starts for VanDeWege_76:

(3, 50831), (5, 50876), (6, 50885), (12, 50951), (13, 50957), (Start: 19 @51023 has 12 MA's), (22, 51041), (24, 51158), (25, 51170), (26, 51227), (30, 51296),

Gene: Wizard_72 Start: 50708, Stop: 50995, Start Num: 17

Candidate Starts for Wizard_72:

(4, 50594), (15, 50672), (Start: 17 @50708 has 11 MA's), (21, 50723), (24, 50846), (26, 50915), (29, 50975), (30, 50984),

Gene: YungMoney_74 Start: 52628, Stop: 52912, Start Num: 18

Candidate Starts for YungMoney_74:

(Start: 18 @52628 has 3 MA's), (22, 52646), (24, 52763), (25, 52775), (26, 52832), (30, 52901),