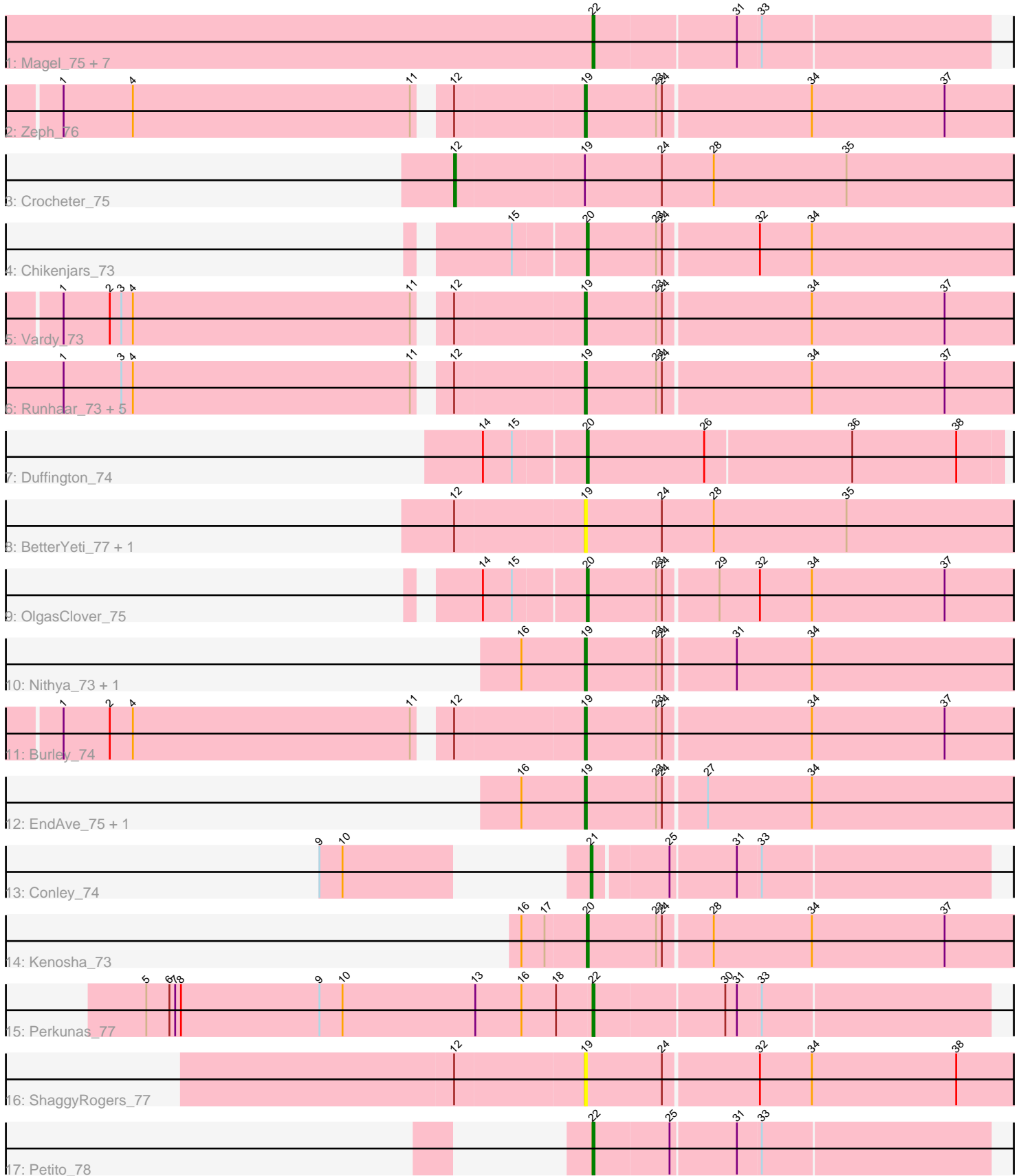


Pham 216401



Note: Tracks are now grouped by subcluster and scaled. Switching in subcluster is indicated by changes in track color. Track scale is now set by default to display the region 30 bp upstream of start 1 to 30 bp downstream of the last possible start. If this default region is judged to be packed too tightly with annotated starts, the track will be further scaled to only show that region of the ORF with annotated starts. This action will be indicated by adding "Zoomed" to the title. For starts, yellow indicates the location of called starts comprised solely of Glimmer/GeneMark auto-annotations, green indicates the location of called starts with at least 1 manual gene annotation.

Pham 216401 Report

This analysis was run 02/22/25 on database version 588.

Pham number 216401 has 32 members, 6 are drafts.

Phages represented in each track:

- Track 1 : Magel_75, Roney_74, Kerry_73, Tanis_74, Odesza_73, Capybara_74, Gravy_73, Gill_74
- Track 2 : Zeph_76
- Track 3 : Crocheter_75
- Track 4 : Chikenjars_73
- Track 5 : Vardy_73
- Track 6 : Runhaar_73, Demure_71, Madvan_74, Phepper_75, Untouchable_76, Arataki_71
- Track 7 : Duffington_74
- Track 8 : BetterYeti_77, Gusicorn_78
- Track 9 : OlgasClover_75
- Track 10 : Nithya_73, AlainaMarie_73
- Track 11 : Burley_74
- Track 12 : EndAve_75, Citrus_73
- Track 13 : Conley_74
- Track 14 : Kenosha_73
- Track 15 : Perkunas_77
- Track 16 : ShaggyRogers_77
- Track 17 : Petite_78

Summary of Final Annotations (See graph section above for start numbers):

The start number called the most often in the published annotations is 19, it was called in 10 of the 26 non-draft genes in the pham.

Genes that call this "Most Annotated" start:

- AlainaMarie_73, Arataki_71, BetterYeti_77, Burley_74, Citrus_73, Demure_71, EndAve_75, Gusicorn_78, Madvan_74, Nithya_73, Phepper_75, Runhaar_73, ShaggyRogers_77, Untouchable_76, Vardy_73, Zeph_76,

Genes that have the "Most Annotated" start but do not call it:

- Crocheter_75,

Genes that do not have the "Most Annotated" start:

- Capybara_74, Chikenjars_73, Conley_74, Duffington_74, Gill_74, Gravy_73, Kenosha_73, Kerry_73, Magel_75, Odesza_73, OlgasClover_75, Perkunas_77, Petite_78, Roney_74, Tanis_74,

Summary by start number:

Start 12:

- Found in 13 of 32 (40.6%) of genes in pham
- Manual Annotations of this start: 1 of 26
- Called 7.7% of time when present
- Phage (with cluster) where this start called: Crocheter_75 (DJ),

Start 19:

- Found in 17 of 32 (53.1%) of genes in pham
- Manual Annotations of this start: 10 of 26
- Called 94.1% of time when present
- Phage (with cluster) where this start called: AlainaMarie_73 (DJ), Arataki_71 (DJ), BetterYeti_77 (DJ), Burley_74 (DJ), Citrus_73 (DJ), Demure_71 (DJ), EndAve_75 (DJ), Gusicorn_78 (DJ), Madvan_74 (DJ), Nithya_73 (DJ), Phepper_75 (DJ), Runhaar_73 (DJ), ShaggyRogers_77 (DJ), Untouchable_76 (DJ), Vardy_73 (DJ), Zeph_76 (DJ),

Start 20:

- Found in 4 of 32 (12.5%) of genes in pham
- Manual Annotations of this start: 4 of 26
- Called 100.0% of time when present
- Phage (with cluster) where this start called: Chikenjars_73 (DJ), Duffington_74 (DJ), Kenosha_73 (DJ), OlgasClover_75 (DJ),

Start 21:

- Found in 1 of 32 (3.1%) of genes in pham
- Manual Annotations of this start: 1 of 26
- Called 100.0% of time when present
- Phage (with cluster) where this start called: Conley_74 (DJ),

Start 22:

- Found in 10 of 32 (31.2%) of genes in pham
- Manual Annotations of this start: 10 of 26
- Called 100.0% of time when present
- Phage (with cluster) where this start called: Capybara_74 (DJ), Gill_74 (DJ), Gravy_73 (DJ), Kerry_73 (DJ), Magel_75 (DJ), Odesza_73 (DJ), Perkunas_77 (DJ), Petite_78 (DJ), Roney_74 (DJ), Tanis_74 (DJ),

Summary by clusters:

There is one cluster represented in this pham: DJ

Info for manual annotations of cluster DJ:

- Start number 12 was manually annotated 1 time for cluster DJ.
- Start number 19 was manually annotated 10 times for cluster DJ.
- Start number 20 was manually annotated 4 times for cluster DJ.
- Start number 21 was manually annotated 1 time for cluster DJ.
- Start number 22 was manually annotated 10 times for cluster DJ.

Gene Information:

Gene: AlainaMarie_73 Start: 50890, Stop: 51117, Start Num: 19

Candidate Starts for AlainaMarie_73:

(16, 50857), (Start: 19 @50890 has 10 MA's), (23, 50926), (24, 50929), (31, 50965), (34, 51004),

Gene: Arataki_71 Start: 50324, Stop: 50554, Start Num: 19

Candidate Starts for Arataki_71:

(1, 50066), (3, 50096), (4, 50102), (11, 50246), (Start: 12 @50258 has 1 MA's), (Start: 19 @50324 has 10 MA's), (23, 50360), (24, 50363), (34, 50438), (37, 50507),

Gene: BetterYeti_77 Start: 50704, Stop: 50937, Start Num: 19

Candidate Starts for BetterYeti_77:

(Start: 12 @50638 has 1 MA's), (Start: 19 @50704 has 10 MA's), (24, 50743), (28, 50770), (35, 50839),

Gene: Burley_74 Start: 50340, Stop: 50570, Start Num: 19

Candidate Starts for Burley_74:

(1, 50082), (2, 50106), (4, 50118), (11, 50262), (Start: 12 @50274 has 1 MA's), (Start: 19 @50340 has 10 MA's), (23, 50376), (24, 50379), (34, 50454), (37, 50523),

Gene: Capybara_74 Start: 50251, Stop: 50451, Start Num: 22

Candidate Starts for Capybara_74:

(Start: 22 @50251 has 10 MA's), (31, 50323), (33, 50335),

Gene: Chikenjars_73 Start: 51135, Stop: 51365, Start Num: 20

Candidate Starts for Chikenjars_73:

(15, 51099), (Start: 20 @51135 has 4 MA's), (23, 51171), (24, 51174), (32, 51222), (34, 51249),

Gene: Citrus_73 Start: 51186, Stop: 51413, Start Num: 19

Candidate Starts for Citrus_73:

(16, 51153), (Start: 19 @51186 has 10 MA's), (23, 51222), (24, 51225), (27, 51246), (34, 51300),

Gene: Conley_74 Start: 50831, Stop: 51028, Start Num: 21

Candidate Starts for Conley_74:

(9, 50750), (10, 50762), (Start: 21 @50831 has 1 MA's), (25, 50867), (31, 50900), (33, 50912),

Gene: Crocheter_75 Start: 50732, Stop: 51031, Start Num: 12

Candidate Starts for Crocheter_75:

(Start: 12 @50732 has 1 MA's), (Start: 19 @50798 has 10 MA's), (24, 50837), (28, 50864), (35, 50933),

Gene: Demure_71 Start: 50324, Stop: 50554, Start Num: 19

Candidate Starts for Demure_71:

(1, 50066), (3, 50096), (4, 50102), (11, 50246), (Start: 12 @50258 has 1 MA's), (Start: 19 @50324 has 10 MA's), (23, 50360), (24, 50363), (34, 50438), (37, 50507),

Gene: Duffington_74 Start: 51067, Stop: 51279, Start Num: 20

Candidate Starts for Duffington_74:

(14, 51016), (15, 51031), (Start: 20 @51067 has 4 MA's), (26, 51127), (36, 51202), (38, 51256),

Gene: EndAve_75 Start: 51080, Stop: 51307, Start Num: 19

Candidate Starts for EndAve_75:
(16, 51047), (Start: 19 @51080 has 10 MA's), (23, 51116), (24, 51119), (27, 51140), (34, 51194),

Gene: Gill_74 Start: 50263, Stop: 50463, Start Num: 22
Candidate Starts for Gill_74:
(Start: 22 @50263 has 10 MA's), (31, 50335), (33, 50347),

Gene: Gravy_73 Start: 49941, Stop: 50141, Start Num: 22
Candidate Starts for Gravy_73:
(Start: 22 @49941 has 10 MA's), (31, 50013), (33, 50025),

Gene: Gusicorn_78 Start: 50705, Stop: 50938, Start Num: 19
Candidate Starts for Gusicorn_78:
(Start: 12 @50639 has 1 MA's), (Start: 19 @50705 has 10 MA's), (24, 50744), (28, 50771), (35, 50840),

Gene: Kenosha_73 Start: 50932, Stop: 51162, Start Num: 20
Candidate Starts for Kenosha_73:
(16, 50899), (17, 50911), (Start: 20 @50932 has 4 MA's), (23, 50968), (24, 50971), (28, 50995), (34, 51046), (37, 51115),

Gene: Kerry_73 Start: 50004, Stop: 50204, Start Num: 22
Candidate Starts for Kerry_73:
(Start: 22 @50004 has 10 MA's), (31, 50076), (33, 50088),

Gene: Madvan_74 Start: 50396, Stop: 50626, Start Num: 19
Candidate Starts for Madvan_74:
(1, 50138), (3, 50168), (4, 50174), (11, 50318), (Start: 12 @50330 has 1 MA's), (Start: 19 @50396 has 10 MA's), (23, 50432), (24, 50435), (34, 50510), (37, 50579),

Gene: Magel_75 Start: 50178, Stop: 50378, Start Num: 22
Candidate Starts for Magel_75:
(Start: 22 @50178 has 10 MA's), (31, 50250), (33, 50262),

Gene: Nithya_73 Start: 50778, Stop: 51005, Start Num: 19
Candidate Starts for Nithya_73:
(16, 50745), (Start: 19 @50778 has 10 MA's), (23, 50814), (24, 50817), (31, 50853), (34, 50892),

Gene: Odesza_73 Start: 50122, Stop: 50322, Start Num: 22
Candidate Starts for Odesza_73:
(Start: 22 @50122 has 10 MA's), (31, 50194), (33, 50206),

Gene: OlgasClover_75 Start: 51639, Stop: 51869, Start Num: 20
Candidate Starts for OlgasClover_75:
(14, 51588), (15, 51603), (Start: 20 @51639 has 4 MA's), (23, 51675), (24, 51678), (29, 51705), (32, 51726), (34, 51753), (37, 51822),

Gene: Perkunas_77 Start: 50320, Stop: 50520, Start Num: 22
Candidate Starts for Perkunas_77:
(5, 50089), (6, 50101), (7, 50104), (8, 50107), (9, 50179), (10, 50191), (13, 50260), (16, 50284), (18, 50302), (Start: 22 @50320 has 10 MA's), (30, 50386), (31, 50392), (33, 50404),

Gene: Petite_78 Start: 51778, Stop: 51978, Start Num: 22
Candidate Starts for Petite_78:

(Start: 22 @51778 has 10 MA's), (25, 51817), (31, 51850), (33, 51862),

Gene: Phepper_75 Start: 50638, Stop: 50868, Start Num: 19

Candidate Starts for Phepper_75:

(1, 50380), (3, 50410), (4, 50416), (11, 50560), (Start: 12 @50572 has 1 MA's), (Start: 19 @50638 has 10 MA's), (23, 50674), (24, 50677), (34, 50752), (37, 50821),

Gene: Roney_74 Start: 50288, Stop: 50488, Start Num: 22

Candidate Starts for Roney_74:

(Start: 22 @50288 has 10 MA's), (31, 50360), (33, 50372),

Gene: Runhaar_73 Start: 50447, Stop: 50677, Start Num: 19

Candidate Starts for Runhaar_73:

(1, 50189), (3, 50219), (4, 50225), (11, 50369), (Start: 12 @50381 has 1 MA's), (Start: 19 @50447 has 10 MA's), (23, 50483), (24, 50486), (34, 50561), (37, 50630),

Gene: ShaggyRogers_77 Start: 50438, Stop: 50668, Start Num: 19

Candidate Starts for ShaggyRogers_77:

(Start: 12 @50372 has 1 MA's), (Start: 19 @50438 has 10 MA's), (24, 50477), (32, 50525), (34, 50552), (38, 50627),

Gene: Tanis_74 Start: 50108, Stop: 50308, Start Num: 22

Candidate Starts for Tanis_74:

(Start: 22 @50108 has 10 MA's), (31, 50180), (33, 50192),

Gene: Untouchable_76 Start: 51635, Stop: 51865, Start Num: 19

Candidate Starts for Untouchable_76:

(1, 51377), (3, 51407), (4, 51413), (11, 51557), (Start: 12 @51569 has 1 MA's), (Start: 19 @51635 has 10 MA's), (23, 51671), (24, 51674), (34, 51749), (37, 51818),

Gene: Vardy_73 Start: 50334, Stop: 50564, Start Num: 19

Candidate Starts for Vardy_73:

(1, 50076), (2, 50100), (3, 50106), (4, 50112), (11, 50256), (Start: 12 @50268 has 1 MA's), (Start: 19 @50334 has 10 MA's), (23, 50370), (24, 50373), (34, 50448), (37, 50517),

Gene: Zeph_76 Start: 51472, Stop: 51702, Start Num: 19

Candidate Starts for Zeph_76:

(1, 51214), (4, 51250), (11, 51394), (Start: 12 @51406 has 1 MA's), (Start: 19 @51472 has 10 MA's), (23, 51508), (24, 51511), (34, 51586), (37, 51655),