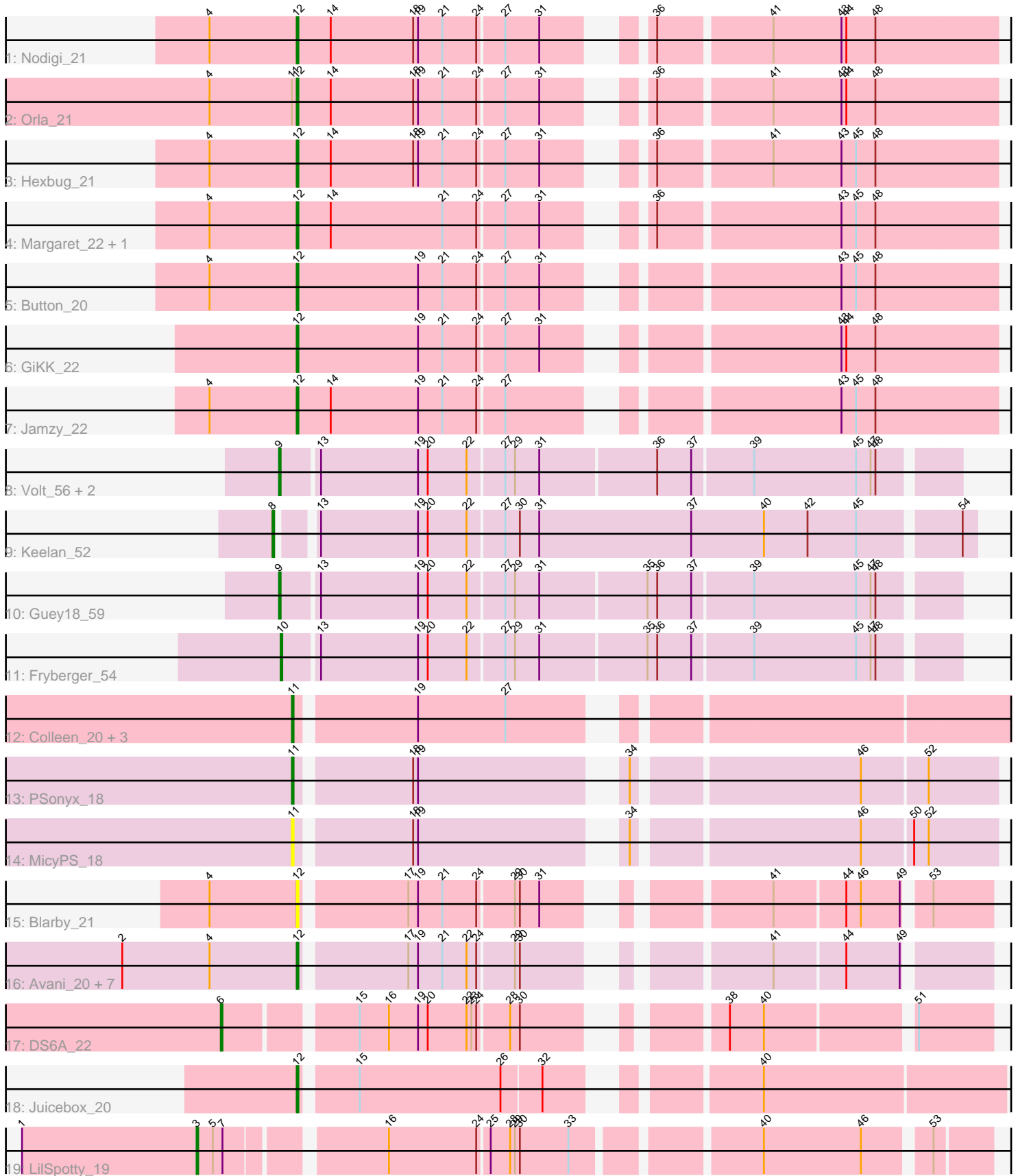


Pham 216417



Note: Tracks are now grouped by subcluster and scaled. Switching in subcluster is indicated by changes in track color. Track scale is now set by default to display the region 30 bp upstream of start 1 to 30 bp downstream of the last possible start. If this default region is judged to be packed too tightly with annotated starts, the track will be further scaled to only show that region of the ORF with annotated starts. This action will be indicated by adding "Zoomed" to the title. For starts, yellow indicates the location of called starts comprised solely of Glimmer/GeneMark auto-annotations, green indicates the location of called starts with at least 1 manual gene annotation.

Pham 216417 Report

This analysis was run 02/22/25 on database version 588.

Pham number 216417 has 32 members, 3 are drafts.

Phages represented in each track:

- Track 1 : Nodigi_21
- Track 2 : Orla_21
- Track 3 : Hexbug_21
- Track 4 : Margaret_22, RanchParmCat_22
- Track 5 : Button_20
- Track 6 : GiKK_22
- Track 7 : Jamzy_22
- Track 8 : Volt_56, Ronaldo_57, Ziko_57
- Track 9 : Keelan_52
- Track 10 : Guey18_59
- Track 11 : Fryberger_54
- Track 12 : Colleen_20, Poushou_20, Arianna_20, TouchMeNot_20
- Track 13 : PSonyx_18
- Track 14 : MicyPS_18
- Track 15 : Blarby_21
- Track 16 : Avani_20, Che9d_20, Jabbawokkie_22, Demsculpinboyz_20, Soul22_20, SilverChicken_20, Yoshi_20, Zapner_21
- Track 17 : DS6A_22
- Track 18 : Juicebox_20
- Track 19 : LilSpotty_19

Summary of Final Annotations (See graph section above for start numbers):

The start number called the most often in the published annotations is 12, it was called in 16 of the 29 non-draft genes in the pham.

Genes that call this "Most Annotated" start:

- Avani_20, Blarby_21, Button_20, Che9d_20, Demsculpinboyz_20, GiKK_22, Hexbug_21, Jabbawokkie_22, Jamzy_22, Juicebox_20, Margaret_22, Nodigi_21, Orla_21, RanchParmCat_22, SilverChicken_20, Soul22_20, Yoshi_20, Zapner_21,

Genes that have the "Most Annotated" start but do not call it:

-

Genes that do not have the "Most Annotated" start:

- Arianna_20, Colleen_20, DS6A_22, Fryberger_54, Guey18_59, Keelan_52, LilSpotty_19, MicyPS_18, PSonyx_18, Poushou_20, Ronaldo_57, TouchMeNot_20, Volt_56, Ziko_57,

Summary by start number:

Start 3:

- Found in 1 of 32 (3.1%) of genes in pham
- Manual Annotations of this start: 1 of 29
- Called 100.0% of time when present
- Phage (with cluster) where this start called: LilSpotty_19 (singleton),

Start 6:

- Found in 1 of 32 (3.1%) of genes in pham
- Manual Annotations of this start: 1 of 29
- Called 100.0% of time when present
- Phage (with cluster) where this start called: DS6A_22 (singleton),

Start 8:

- Found in 1 of 32 (3.1%) of genes in pham
- Manual Annotations of this start: 1 of 29
- Called 100.0% of time when present
- Phage (with cluster) where this start called: Keelan_52 (DP),

Start 9:

- Found in 4 of 32 (12.5%) of genes in pham
- Manual Annotations of this start: 4 of 29
- Called 100.0% of time when present
- Phage (with cluster) where this start called: Guey18_59 (DP), Ronaldo_57 (DP), Volt_56 (DP), Ziko_57 (DP),

Start 10:

- Found in 1 of 32 (3.1%) of genes in pham
- Manual Annotations of this start: 1 of 29
- Called 100.0% of time when present
- Phage (with cluster) where this start called: Fryberger_54 (DP),

Start 11:

- Found in 7 of 32 (21.9%) of genes in pham
- Manual Annotations of this start: 5 of 29
- Called 85.7% of time when present
- Phage (with cluster) where this start called: Arianna_20 (EO), Colleen_20 (EO), MicyPS_18 (EQ), PSonyx_18 (EQ), Poushou_20 (EO), TouchMeNot_20 (EO),

Start 12:

- Found in 18 of 32 (56.2%) of genes in pham
- Manual Annotations of this start: 16 of 29
- Called 100.0% of time when present
- Phage (with cluster) where this start called: Avani_20 (F2), Blarby_21 (F), Button_20 (CT), Che9d_20 (F2), Demsculpinboyz_20 (F2), GiKK_22 (CT), Hexbug_21 (CT), Jabbawokkie_22 (F2), Jamzy_22 (CT), Juicebox_20 (singleton), Margaret_22 (CT), Nodigi_21 (CT), Orla_21 (CT), RanchParmCat_22 (CT), SilverChicken_20 (F2),

Soul22_20 (F2), Yoshi_20 (F2), Zapner_21 (F2),

Summary by clusters:

There are 7 clusters represented in this pham: singleton, F, F2, EO, EQ, DP, CT,

Info for manual annotations of cluster CT:

- Start number 12 was manually annotated 8 times for cluster CT.

Info for manual annotations of cluster DP:

- Start number 8 was manually annotated 1 time for cluster DP.
- Start number 9 was manually annotated 4 times for cluster DP.
- Start number 10 was manually annotated 1 time for cluster DP.

Info for manual annotations of cluster EO:

- Start number 11 was manually annotated 4 times for cluster EO.

Info for manual annotations of cluster EQ:

- Start number 11 was manually annotated 1 time for cluster EQ.

Info for manual annotations of cluster F2:

- Start number 12 was manually annotated 7 times for cluster F2.

Gene Information:

Gene: Arianna_20 Start: 19090, Stop: 19509, Start Num: 11

Candidate Starts for Arianna_20:

(Start: 11 @19090 has 5 MA's), (19, 19159), (27, 19213),

Gene: Avani_20 Start: 15408, Stop: 15773, Start Num: 12

Candidate Starts for Avani_20:

(2, 15300), (4, 15354), (Start: 12 @15408 has 16 MA's), (17, 15468), (19, 15474), (21, 15489), (22, 15504), (24, 15510), (29, 15531), (30, 15534), (41, 15651), (44, 15693), (49, 15726),

Gene: Blarby_21 Start: 15928, Stop: 16293, Start Num: 12

Candidate Starts for Blarby_21:

(4, 15874), (Start: 12 @15928 has 16 MA's), (17, 15988), (19, 15994), (21, 16009), (24, 16030), (29, 16051), (30, 16054), (31, 16066), (41, 16171), (44, 16213), (46, 16222), (49, 16246), (53, 16258),

Gene: Button_20 Start: 16475, Stop: 16867, Start Num: 12

Candidate Starts for Button_20:

(4, 16421), (Start: 12 @16475 has 16 MA's), (19, 16550), (21, 16565), (24, 16586), (27, 16601), (31, 16622), (43, 16772), (45, 16781), (48, 16793),

Gene: Che9d_20 Start: 15416, Stop: 15781, Start Num: 12

Candidate Starts for Che9d_20:

(2, 15308), (4, 15362), (Start: 12 @15416 has 16 MA's), (17, 15476), (19, 15482), (21, 15497), (22, 15512), (24, 15518), (29, 15539), (30, 15542), (41, 15659), (44, 15701), (49, 15734),

Gene: Colleen_20 Start: 19090, Stop: 19509, Start Num: 11

Candidate Starts for Colleen_20:

(Start: 11 @19090 has 5 MA's), (19, 19159), (27, 19213),

Gene: DS6A_22 Start: 18715, Stop: 19122, Start Num: 6

Candidate Starts for DS6A_22:

(Start: 6 @18715 has 1 MA's), (15, 18787), (16, 18805), (19, 18823), (20, 18829), (22, 18853), (23, 18856), (24, 18859), (28, 18877), (30, 18883), (38, 18973), (40, 18994), (51, 19078),

Gene: Demsculpinboyz_20 Start: 15401, Stop: 15766, Start Num: 12

Candidate Starts for Demsculpinboyz_20:

(2, 15293), (4, 15347), (Start: 12 @15401 has 16 MA's), (17, 15461), (19, 15467), (21, 15482), (22, 15497), (24, 15503), (29, 15524), (30, 15527), (41, 15644), (44, 15686), (49, 15719),

Gene: Fryberger_54 Start: 29656, Stop: 30054, Start Num: 10

Candidate Starts for Fryberger_54:

(Start: 10 @29656 has 1 MA's), (13, 29677), (19, 29737), (20, 29743), (22, 29767), (27, 29788), (29, 29794), (31, 29809), (35, 29872), (36, 29878), (37, 29899), (39, 29935), (45, 29998), (47, 30007), (48, 30010),

Gene: GiKK_22 Start: 16778, Stop: 17170, Start Num: 12

Candidate Starts for GiKK_22:

(Start: 12 @16778 has 16 MA's), (19, 16853), (21, 16868), (24, 16889), (27, 16904), (31, 16925), (43, 17075), (44, 17078), (48, 17096),

Gene: Guey18_59 Start: 30848, Stop: 31246, Start Num: 9

Candidate Starts for Guey18_59:

(Start: 9 @30848 has 4 MA's), (13, 30869), (19, 30929), (20, 30935), (22, 30959), (27, 30980), (29, 30986), (31, 31001), (35, 31064), (36, 31070), (37, 31091), (39, 31127), (45, 31190), (47, 31199), (48, 31202),

Gene: Hexbug_21 Start: 17464, Stop: 17856, Start Num: 12

Candidate Starts for Hexbug_21:

(4, 17410), (Start: 12 @17464 has 16 MA's), (14, 17485), (18, 17536), (19, 17539), (21, 17554), (24, 17575), (27, 17590), (31, 17611), (36, 17653), (41, 17719), (43, 17761), (45, 17770), (48, 17782),

Gene: Jabbawokkie_22 Start: 15931, Stop: 16296, Start Num: 12

Candidate Starts for Jabbawokkie_22:

(2, 15823), (4, 15877), (Start: 12 @15931 has 16 MA's), (17, 15991), (19, 15997), (21, 16012), (22, 16027), (24, 16033), (29, 16054), (30, 16057), (41, 16174), (44, 16216), (49, 16249),

Gene: Jamzy_22 Start: 16788, Stop: 17180, Start Num: 12

Candidate Starts for Jamzy_22:

(4, 16734), (Start: 12 @16788 has 16 MA's), (14, 16809), (19, 16863), (21, 16878), (24, 16899), (27, 16914), (43, 17085), (45, 17094), (48, 17106),

Gene: Juicebox_20 Start: 19400, Stop: 19786, Start Num: 12

Candidate Starts for Juicebox_20:

(Start: 12 @19400 has 16 MA's), (15, 19430), (26, 19517), (32, 19541), (40, 19640),

Gene: Keelan_52 Start: 29645, Stop: 30055, Start Num: 8

Candidate Starts for Keelan_52:

(Start: 8 @29645 has 1 MA's), (13, 29663), (19, 29723), (20, 29729), (22, 29753), (27, 29774), (30, 29783), (31, 29795), (37, 29888), (40, 29933), (42, 29960), (45, 29990), (54, 30047),

Gene: LilSpotty_19 Start: 16427, Stop: 16867, Start Num: 3

Candidate Starts for LilSpotty_19:

(1, 16319), (Start: 3 @16427 has 1 MA's), (5, 16436), (7, 16442), (16, 16529), (24, 16583), (25, 16589), (28, 16601), (29, 16604), (30, 16607), (33, 16637), (40, 16739), (46, 16799), (53, 16835),

Gene: Margaret_22 Start: 17157, Stop: 17549, Start Num: 12

Candidate Starts for Margaret_22:

(4, 17103), (Start: 12 @17157 has 16 MA's), (14, 17178), (21, 17247), (24, 17268), (27, 17283), (31, 17304), (36, 17346), (43, 17454), (45, 17463), (48, 17475),

Gene: MicyPS_18 Start: 19058, Stop: 19444, Start Num: 11

Candidate Starts for MicyPS_18:

(Start: 11 @19058 has 5 MA's), (18, 19124), (19, 19127), (34, 19235), (46, 19364), (50, 19394), (52, 19403),

Gene: Nodigi_21 Start: 17443, Stop: 17835, Start Num: 12

Candidate Starts for Nodigi_21:

(4, 17389), (Start: 12 @17443 has 16 MA's), (14, 17464), (18, 17515), (19, 17518), (21, 17533), (24, 17554), (27, 17569), (31, 17590), (36, 17632), (41, 17698), (43, 17740), (44, 17743), (48, 17761),

Gene: Orla_21 Start: 17447, Stop: 17839, Start Num: 12

Candidate Starts for Orla_21:

(4, 17393), (Start: 11 @17444 has 5 MA's), (Start: 12 @17447 has 16 MA's), (14, 17468), (18, 17519), (19, 17522), (21, 17537), (24, 17558), (27, 17573), (31, 17594), (36, 17636), (41, 17702), (43, 17744), (44, 17747), (48, 17765),

Gene: PSonyx_18 Start: 19173, Stop: 19559, Start Num: 11

Candidate Starts for PSonyx_18:

(Start: 11 @19173 has 5 MA's), (18, 19239), (19, 19242), (34, 19350), (46, 19479), (52, 19518),

Gene: Poushou_20 Start: 19090, Stop: 19509, Start Num: 11

Candidate Starts for Poushou_20:

(Start: 11 @19090 has 5 MA's), (19, 19159), (27, 19213),

Gene: RanchParmCat_22 Start: 17157, Stop: 17549, Start Num: 12

Candidate Starts for RanchParmCat_22:

(4, 17103), (Start: 12 @17157 has 16 MA's), (14, 17178), (21, 17247), (24, 17268), (27, 17283), (31, 17304), (36, 17346), (43, 17454), (45, 17463), (48, 17475),

Gene: Ronaldo_57 Start: 30613, Stop: 31011, Start Num: 9

Candidate Starts for Ronaldo_57:

(Start: 9 @30613 has 4 MA's), (13, 30634), (19, 30694), (20, 30700), (22, 30724), (27, 30745), (29, 30751), (31, 30766), (36, 30835), (37, 30856), (39, 30892), (45, 30955), (47, 30964), (48, 30967),

Gene: SilverChicken_20 Start: 15408, Stop: 15773, Start Num: 12

Candidate Starts for SilverChicken_20:

(2, 15300), (4, 15354), (Start: 12 @15408 has 16 MA's), (17, 15468), (19, 15474), (21, 15489), (22, 15504), (24, 15510), (29, 15531), (30, 15534), (41, 15651), (44, 15693), (49, 15726),

Gene: Soul22_20 Start: 15406, Stop: 15771, Start Num: 12

Candidate Starts for Soul22_20:

(2, 15298), (4, 15352), (Start: 12 @15406 has 16 MA's), (17, 15466), (19, 15472), (21, 15487), (22, 15502), (24, 15508), (29, 15529), (30, 15532), (41, 15649), (44, 15691), (49, 15724),

Gene: TouchMeNot_20 Start: 19090, Stop: 19509, Start Num: 11

Candidate Starts for TouchMeNot_20:

(Start: 11 @19090 has 5 MA's), (19, 19159), (27, 19213),

Gene: Volt_56 Start: 30613, Stop: 31011, Start Num: 9

Candidate Starts for Volt_56:

(Start: 9 @30613 has 4 MA's), (13, 30634), (19, 30694), (20, 30700), (22, 30724), (27, 30745), (29, 30751), (31, 30766), (36, 30835), (37, 30856), (39, 30892), (45, 30955), (47, 30964), (48, 30967),

Gene: Yoshi_20 Start: 15407, Stop: 15772, Start Num: 12

Candidate Starts for Yoshi_20:

(2, 15299), (4, 15353), (Start: 12 @15407 has 16 MA's), (17, 15467), (19, 15473), (21, 15488), (22, 15503), (24, 15509), (29, 15530), (30, 15533), (41, 15650), (44, 15692), (49, 15725),

Gene: Zapner_21 Start: 15932, Stop: 16297, Start Num: 12

Candidate Starts for Zapner_21:

(2, 15824), (4, 15878), (Start: 12 @15932 has 16 MA's), (17, 15992), (19, 15998), (21, 16013), (22, 16028), (24, 16034), (29, 16055), (30, 16058), (41, 16175), (44, 16217), (49, 16250),

Gene: Ziko_57 Start: 30553, Stop: 30951, Start Num: 9

Candidate Starts for Ziko_57:

(Start: 9 @30553 has 4 MA's), (13, 30574), (19, 30634), (20, 30640), (22, 30664), (27, 30685), (29, 30691), (31, 30706), (36, 30775), (37, 30796), (39, 30832), (45, 30895), (47, 30904), (48, 30907),