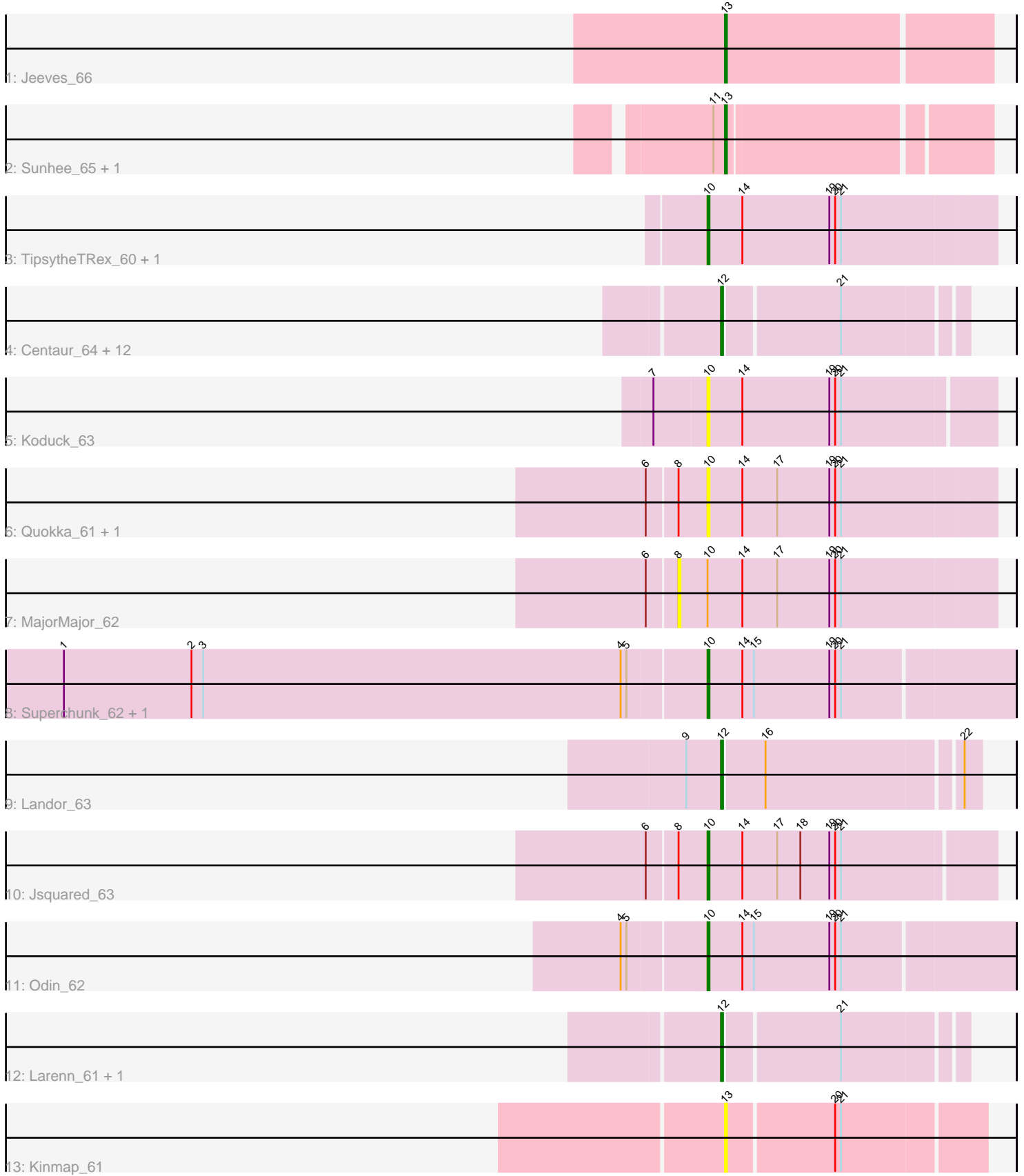


Pham 216431



Note: Tracks are now grouped by subcluster and scaled. Switching in subcluster is indicated by changes in track color. Track scale is now set by default to display the region 30 bp upstream of start 1 to 30 bp downstream of the last possible start. If this default region is judged to be packed too tightly with annotated starts, the track will be further scaled to only show that region of the ORF with annotated starts. This action will be indicated by adding "Zoomed" to the title. For starts, yellow indicates the location of called starts comprised solely of Glimmer/GeneMark auto-annotations, green indicates the location of called starts with at least 1 manual gene annotation.

Pham 216431 Report

This analysis was run 02/22/25 on database version 588.

Pham number 216431 has 30 members, 10 are drafts.

Phages represented in each track:

- Track 1 : Jeeves_66
- Track 2 : Sunhee_65, Gail_64
- Track 3 : TipsytheTRex_60, Serenity_63
- Track 4 : Centaur_64, Terrific_64, MiculUcigas_63, WideWale_64, Piro94_63, Baehexic_62, Equemioh13_63, NaSiaTalie_63, Sknot_63, Gratitude_61, Updawg_64, Flare16_63, HarryHoudini_64
- Track 5 : Koduck_63
- Track 6 : Quokka_61, Bradman_62
- Track 7 : MajorMajor_62
- Track 8 : Superchunk_62, Caraxes_63
- Track 9 : Landor_63
- Track 10 : Jsquared_63
- Track 11 : Odin_62
- Track 12 : Larenn_61, Malec_62
- Track 13 : Kinmap_61

Summary of Final Annotations (See graph section above for start numbers):

The start number called the most often in the published annotations is 12, it was called in 13 of the 20 non-draft genes in the pham.

Genes that call this "Most Annotated" start:

- Baehexic_62, Centaur_64, Equemioh13_63, Flare16_63, Gratitude_61, HarryHoudini_64, Landor_63, Larenn_61, Malec_62, MiculUcigas_63, NaSiaTalie_63, Piro94_63, Sknot_63, Terrific_64, Updawg_64, WideWale_64,

Genes that have the "Most Annotated" start but do not call it:

-

Genes that do not have the "Most Annotated" start:

- Bradman_62, Caraxes_63, Gail_64, Jeeves_66, Jsquared_63, Kinmap_61, Koduck_63, MajorMajor_62, Odin_62, Quokka_61, Serenity_63, Sunhee_65, Superchunk_62, TipsytheTRex_60,

Summary by start number:

Start 8:

- Found in 4 of 30 (13.3%) of genes in pham
- No Manual Annotations of this start.
- Called 25.0% of time when present
- Phage (with cluster) where this start called: MajorMajor_62 (A2),

Start 10:

- Found in 10 of 30 (33.3%) of genes in pham
- Manual Annotations of this start: 5 of 20
- Called 90.0% of time when present
- Phage (with cluster) where this start called: Bradman_62 (A2), Caraxes_63 (A2), Jsquared_63 (A2), Koduck_63 (A2), Odin_62 (A2), Quokka_61 (A2), Serenity_63 (A2), Superchunk_62 (A2), TipsytheTRex_60 (A2),

Start 12:

- Found in 16 of 30 (53.3%) of genes in pham
- Manual Annotations of this start: 13 of 20
- Called 100.0% of time when present
- Phage (with cluster) where this start called: Baehexic_62 (A2), Centaur_64 (A2), Equemioh13_63 (A2), Flare16_63 (A2), Gratitude_61 (A2), HarryHoudini_64 (A2), Landor_63 (A2), Larenn_61 (A2), Malec_62 (A2), MiculUcigas_63 (A2), NaSiaTalie_63 (A2), Piro94_63 (A2), Sknot_63 (A2), Terrific_64 (A2), Updawg_64 (A2), WideWale_64 (A2),

Start 13:

- Found in 4 of 30 (13.3%) of genes in pham
- Manual Annotations of this start: 2 of 20
- Called 100.0% of time when present
- Phage (with cluster) where this start called: Gail_64 (A14), Jeeves_66 (A14), Kinmap_61 (A21), Sunhee_65 (A14),

Summary by clusters:

There are 3 clusters represented in this pham: A14, A2, A21,

Info for manual annotations of cluster A14:

- Start number 13 was manually annotated 2 times for cluster A14.

Info for manual annotations of cluster A2:

- Start number 10 was manually annotated 5 times for cluster A2.
- Start number 12 was manually annotated 13 times for cluster A2.

Gene Information:

Gene: Baehexic_62 Start: 39801, Stop: 39685, Start Num: 12

Candidate Starts for Baehexic_62:

(Start: 12 @39801 has 13 MA's), (21, 39744),

Gene: Bradman_62 Start: 39200, Stop: 39054, Start Num: 10

Candidate Starts for Bradman_62:

(6, 39230), (8, 39215), (Start: 10 @39200 has 5 MA's), (14, 39182), (17, 39164), (19, 39137), (20, 39134), (21, 39131),

Gene: Caraxes_63 Start: 38676, Stop: 38521, Start Num: 10

Candidate Starts for Caraxes_63:

(1, 39000), (2, 38934), (3, 38928), (4, 38712), (5, 38709), (Start: 10 @38676 has 5 MA's), (14, 38658), (15, 38652), (19, 38613), (20, 38610), (21, 38607),

Gene: Centaur_64 Start: 40015, Stop: 39899, Start Num: 12

Candidate Starts for Centaur_64:

(Start: 12 @40015 has 13 MA's), (21, 39958),

Gene: Equemioh13_63 Start: 39920, Stop: 39804, Start Num: 12

Candidate Starts for Equemioh13_63:

(Start: 12 @39920 has 13 MA's), (21, 39863),

Gene: Flare16_63 Start: 39676, Stop: 39560, Start Num: 12

Candidate Starts for Flare16_63:

(Start: 12 @39676 has 13 MA's), (21, 39619),

Gene: Gail_64 Start: 40781, Stop: 40653, Start Num: 13

Candidate Starts for Gail_64:

(11, 40787), (Start: 13 @40781 has 2 MA's),

Gene: Gratitude_61 Start: 39920, Stop: 39804, Start Num: 12

Candidate Starts for Gratitude_61:

(Start: 12 @39920 has 13 MA's), (21, 39863),

Gene: HarryHoudini_64 Start: 40119, Stop: 40003, Start Num: 12

Candidate Starts for HarryHoudini_64:

(Start: 12 @40119 has 13 MA's), (21, 40062),

Gene: Jeeves_66 Start: 39766, Stop: 39632, Start Num: 13

Candidate Starts for Jeeves_66:

(Start: 13 @39766 has 2 MA's),

Gene: Jsquared_63 Start: 39358, Stop: 39215, Start Num: 10

Candidate Starts for Jsquared_63:

(6, 39388), (8, 39373), (Start: 10 @39358 has 5 MA's), (14, 39340), (17, 39322), (18, 39310), (19, 39295), (20, 39292), (21, 39289),

Gene: Kinmap_61 Start: 38456, Stop: 38328, Start Num: 13

Candidate Starts for Kinmap_61:

(Start: 13 @38456 has 2 MA's), (20, 38402), (21, 38399),

Gene: Koduck_63 Start: 39295, Stop: 39152, Start Num: 10

Candidate Starts for Koduck_63:

(7, 39316), (Start: 10 @39295 has 5 MA's), (14, 39277), (19, 39232), (20, 39229), (21, 39226),

Gene: Landor_63 Start: 40890, Stop: 40765, Start Num: 12

Candidate Starts for Landor_63:

(9, 40908), (Start: 12 @40890 has 13 MA's), (16, 40869), (22, 40773),

Gene: Larenn_61 Start: 39953, Stop: 39837, Start Num: 12

Candidate Starts for Larenn_61:

(Start: 12 @39953 has 13 MA's), (21, 39896),

Gene: MajorMajor_62 Start: 39215, Stop: 39054, Start Num: 8

Candidate Starts for MajorMajor_62:

(6, 39230), (8, 39215), (Start: 10 @39200 has 5 MA's), (14, 39182), (17, 39164), (19, 39137), (20, 39134), (21, 39131),

Gene: Malec_62 Start: 40520, Stop: 40404, Start Num: 12

Candidate Starts for Malec_62:

(Start: 12 @40520 has 13 MA's), (21, 40463),

Gene: MiculUcigas_63 Start: 39579, Stop: 39463, Start Num: 12

Candidate Starts for MiculUcigas_63:

(Start: 12 @39579 has 13 MA's), (21, 39522),

Gene: NaSiaTalie_63 Start: 39673, Stop: 39557, Start Num: 12

Candidate Starts for NaSiaTalie_63:

(Start: 12 @39673 has 13 MA's), (21, 39616),

Gene: Odin_62 Start: 39060, Stop: 38905, Start Num: 10

Candidate Starts for Odin_62:

(4, 39096), (5, 39093), (Start: 10 @39060 has 5 MA's), (14, 39042), (15, 39036), (19, 38997), (20, 38994), (21, 38991),

Gene: Piro94_63 Start: 40026, Stop: 39910, Start Num: 12

Candidate Starts for Piro94_63:

(Start: 12 @40026 has 13 MA's), (21, 39969),

Gene: Quokka_61 Start: 39200, Stop: 39054, Start Num: 10

Candidate Starts for Quokka_61:

(6, 39230), (8, 39215), (Start: 10 @39200 has 5 MA's), (14, 39182), (17, 39164), (19, 39137), (20, 39134), (21, 39131),

Gene: Serenity_63 Start: 39413, Stop: 39267, Start Num: 10

Candidate Starts for Serenity_63:

(Start: 10 @39413 has 5 MA's), (14, 39395), (19, 39350), (20, 39347), (21, 39344),

Gene: Sknot_63 Start: 39676, Stop: 39560, Start Num: 12

Candidate Starts for Sknot_63:

(Start: 12 @39676 has 13 MA's), (21, 39619),

Gene: Sunhee_65 Start: 39237, Stop: 39109, Start Num: 13

Candidate Starts for Sunhee_65:

(11, 39243), (Start: 13 @39237 has 2 MA's),

Gene: Superchunk_62 Start: 38676, Stop: 38521, Start Num: 10

Candidate Starts for Superchunk_62:

(1, 39000), (2, 38934), (3, 38928), (4, 38712), (5, 38709), (Start: 10 @38676 has 5 MA's), (14, 38658), (15, 38652), (19, 38613), (20, 38610), (21, 38607),

Gene: Terrific_64 Start: 40030, Stop: 39914, Start Num: 12

Candidate Starts for Terrific_64:

(Start: 12 @40030 has 13 MA's), (21, 39973),

Gene: TipsytheTRex_60 Start: 39483, Stop: 39337, Start Num: 10

Candidate Starts for TipsytheTRex_60:

(Start: 10 @39483 has 5 MA's), (14, 39465), (19, 39420), (20, 39417), (21, 39414),

Gene: Updawg_64 Start: 39920, Stop: 39804, Start Num: 12

Candidate Starts for Updawg_64:

(Start: 12 @39920 has 13 MA's), (21, 39863),

Gene: WideWale_64 Start: 39920, Stop: 39804, Start Num: 12

Candidate Starts for WideWale_64:

(Start: 12 @39920 has 13 MA's), (21, 39863),