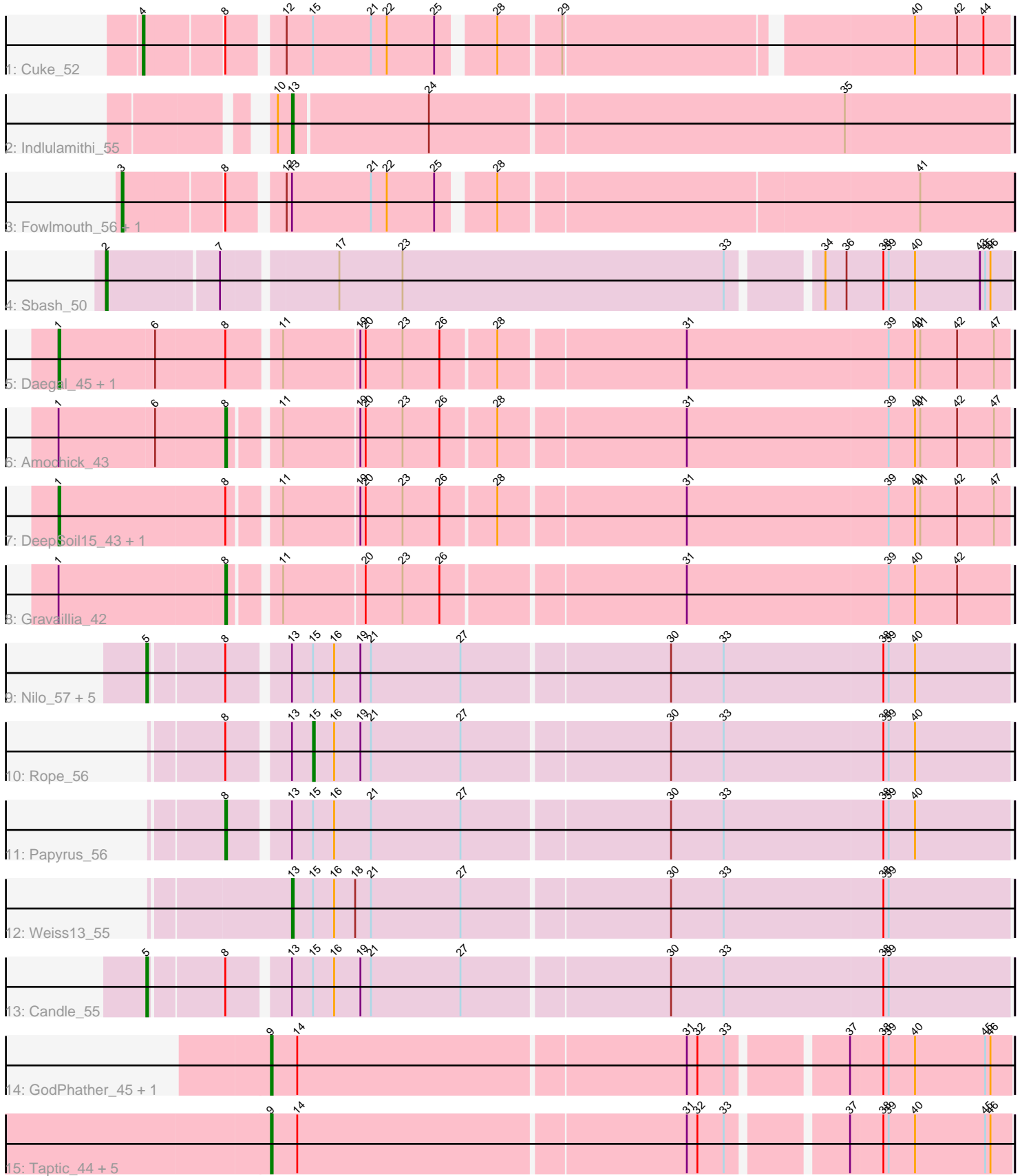


Pham 216434



Note: Tracks are now grouped by subcluster and scaled. Switching in subcluster is indicated by changes in track color. Track scale is now set by default to display the region 30 bp upstream of start 1 to 30 bp downstream of the last possible start. If this default region is judged to be packed too tightly with annotated starts, the track will be further scaled to only show that region of the ORF with annotated starts. This action will be indicated by adding "Zoomed" to the title. For starts, yellow indicates the location of called starts comprised solely of Glimmer/GeneMark auto-annotations, green indicates the location of called starts with at least 1 manual gene annotation.

Pham 216434 Report

This analysis was run 02/22/25 on database version 588.

Pham number 216434 has 29 members, 1 are drafts.

Phages represented in each track:

- Track 1 : Cuke_52
- Track 2 : Indlulamithi_55
- Track 3 : Fowlmouth_56, MrMiyagi_55
- Track 4 : Sbash_50
- Track 5 : Daegal_45, Gancho_42
- Track 6 : Amochick_43
- Track 7 : DeepSoil15_43, Wishmaker_41
- Track 8 : Gravaillia_42
- Track 9 : Nilo_57, Yelo_55, Zenon_56, Send513_56, MontyDev_56, Riparian_57
- Track 10 : Rope_56
- Track 11 : Papyrus_56
- Track 12 : Weiss13_55
- Track 13 : Candle_55
- Track 14 : GodPhather_45, Jeon_44
- Track 15 : Taptic_44, Argie_45, Cepens_44, D12_43, PR_44, Megabear_44

Summary of Final Annotations (See graph section above for start numbers):

The start number called the most often in the published annotations is 9, it was called in 8 of the 28 non-draft genes in the pham.

Genes that call this "Most Annotated" start:

- Argie_45, Cepens_44, D12_43, GodPhather_45, Jeon_44, Megabear_44, PR_44, Taptic_44,

Genes that have the "Most Annotated" start but do not call it:

-

Genes that do not have the "Most Annotated" start:

- Amochick_43, Candle_55, Cuke_52, Daegal_45, DeepSoil15_43, Fowlmouth_56, Gancho_42, Gravaillia_42, Indlulamithi_55, MontyDev_56, MrMiyagi_55, Nilo_57, Papyrus_56, Riparian_57, Rope_56, Sbash_50, Send513_56, Weiss13_55, Wishmaker_41, Yelo_55, Zenon_56,

Summary by start number:

Start 1:

- Found in 6 of 29 (20.7%) of genes in pham
- Manual Annotations of this start: 4 of 28
- Called 66.7% of time when present
- Phage (with cluster) where this start called: Daegal_45 (Q), DeepSoil15_43 (Q), Gancho_42 (Q), Wishmaker_41 (Q),

Start 2:

- Found in 1 of 29 (3.4%) of genes in pham
- Manual Annotations of this start: 1 of 28
- Called 100.0% of time when present
- Phage (with cluster) where this start called: Sbash_50 (I2),

Start 3:

- Found in 2 of 29 (6.9%) of genes in pham
- Manual Annotations of this start: 2 of 28
- Called 100.0% of time when present
- Phage (with cluster) where this start called: Fowlmouth_56 (AC), MrMiyagi_55 (AC),

Start 4:

- Found in 1 of 29 (3.4%) of genes in pham
- Manual Annotations of this start: 1 of 28
- Called 100.0% of time when present
- Phage (with cluster) where this start called: Cuke_52 (AC),

Start 5:

- Found in 7 of 29 (24.1%) of genes in pham
- Manual Annotations of this start: 6 of 28
- Called 100.0% of time when present
- Phage (with cluster) where this start called: Candle_55 (R), MontyDev_56 (R), Nilo_57 (R), Riparian_57 (R), Send513_56 (R), Yelo_55 (R), Zenon_56 (R),

Start 8:

- Found in 18 of 29 (62.1%) of genes in pham
- Manual Annotations of this start: 3 of 28
- Called 16.7% of time when present
- Phage (with cluster) where this start called: Amochick_43 (Q), Gravallia_42 (Q), Papyrus_56 (R),

Start 9:

- Found in 8 of 29 (27.6%) of genes in pham
- Manual Annotations of this start: 8 of 28
- Called 100.0% of time when present
- Phage (with cluster) where this start called: Argie_45 (W), Cepens_44 (W), D12_43 (W), GodPhather_45 (W), Jeon_44 (W), Megabear_44 (W), PR_44 (W), Taptic_44 (W),

Start 13:

- Found in 13 of 29 (44.8%) of genes in pham
- Manual Annotations of this start: 2 of 28
- Called 15.4% of time when present

- Phage (with cluster) where this start called: Indlulamithi_55 (AC), Weiss13_55 (R),

Start 15:

- Found in 11 of 29 (37.9%) of genes in pham
- Manual Annotations of this start: 1 of 28
- Called 9.1% of time when present
- Phage (with cluster) where this start called: Rope_56 (R),

Summary by clusters:

There are 5 clusters represented in this pham: Q, AC, R, I2, W,

Info for manual annotations of cluster AC:

- Start number 3 was manually annotated 2 times for cluster AC.
- Start number 4 was manually annotated 1 time for cluster AC.
- Start number 13 was manually annotated 1 time for cluster AC.

Info for manual annotations of cluster I2:

- Start number 2 was manually annotated 1 time for cluster I2.

Info for manual annotations of cluster Q:

- Start number 1 was manually annotated 4 times for cluster Q.
- Start number 8 was manually annotated 2 times for cluster Q.

Info for manual annotations of cluster R:

- Start number 5 was manually annotated 6 times for cluster R.
- Start number 8 was manually annotated 1 time for cluster R.
- Start number 13 was manually annotated 1 time for cluster R.
- Start number 15 was manually annotated 1 time for cluster R.

Info for manual annotations of cluster W:

- Start number 9 was manually annotated 8 times for cluster W.

Gene Information:

Gene: Amochick_43 Start: 33322, Stop: 32897, Start Num: 8

Candidate Starts for Amochick_43:

(Start: 1 @33415 has 4 MA's), (6, 33361), (Start: 8 @33322 has 3 MA's), (11, 33298), (19, 33256), (20, 33253), (23, 33232), (26, 33211), (28, 33181), (31, 33079), (39, 32965), (40, 32950), (41, 32947), (42, 32926), (47, 32905),

Gene: Argie_45 Start: 40492, Stop: 40893, Start Num: 9

Candidate Starts for Argie_45:

(Start: 9 @40492 has 8 MA's), (14, 40507), (31, 40723), (32, 40729), (33, 40744), (37, 40804), (38, 40822), (39, 40825), (40, 40840), (45, 40879), (46, 40882),

Gene: Candle_55 Start: 42652, Stop: 43122, Start Num: 5

Candidate Starts for Candle_55:

(Start: 5 @42652 has 6 MA's), (Start: 8 @42691 has 3 MA's), (Start: 13 @42721 has 2 MA's), (Start: 15 @42733 has 1 MA's), (16, 42745), (19, 42760), (21, 42766), (27, 42817), (30, 42931), (33, 42961), (38, 43051), (39, 43054),

Gene: Cepens_44 Start: 40207, Stop: 40608, Start Num: 9

Candidate Starts for Cepens_44:

(Start: 9 @40207 has 8 MA's), (14, 40222), (31, 40438), (32, 40444), (33, 40459), (37, 40519), (38, 40537), (39, 40540), (40, 40555), (45, 40594), (46, 40597),

Gene: Cuke_52 Start: 36064, Stop: 36516, Start Num: 4

Candidate Starts for Cuke_52:

(Start: 4 @36064 has 1 MA's), (Start: 8 @36106 has 3 MA's), (12, 36133), (Start: 15 @36148 has 1 MA's), (21, 36181), (22, 36190), (25, 36217), (28, 36244), (29, 36277), (40, 36463), (42, 36487), (44, 36502),

Gene: D12_43 Start: 40755, Stop: 41156, Start Num: 9

Candidate Starts for D12_43:

(Start: 9 @40755 has 8 MA's), (14, 40770), (31, 40986), (32, 40992), (33, 41007), (37, 41067), (38, 41085), (39, 41088), (40, 41103), (45, 41142), (46, 41145),

Gene: Daegal_45 Start: 33993, Stop: 33472, Start Num: 1

Candidate Starts for Daegal_45:

(Start: 1 @33993 has 4 MA's), (6, 33939), (Start: 8 @33900 has 3 MA's), (11, 33873), (19, 33831), (20, 33828), (23, 33807), (26, 33786), (28, 33756), (31, 33654), (39, 33540), (40, 33525), (41, 33522), (42, 33501), (47, 33480),

Gene: DeepSoil15_43 Start: 33409, Stop: 32891, Start Num: 1

Candidate Starts for DeepSoil15_43:

(Start: 1 @33409 has 4 MA's), (Start: 8 @33316 has 3 MA's), (11, 33292), (19, 33250), (20, 33247), (23, 33226), (26, 33205), (28, 33175), (31, 33073), (39, 32959), (40, 32944), (41, 32941), (42, 32920), (47, 32899),

Gene: Fowlmouth_56 Start: 39448, Stop: 39924, Start Num: 3

Candidate Starts for Fowlmouth_56:

(Start: 3 @39448 has 2 MA's), (Start: 8 @39502 has 3 MA's), (12, 39529), (Start: 13 @39532 has 2 MA's), (21, 39577), (22, 39586), (25, 39613), (28, 39640), (41, 39871),

Gene: Gancho_42 Start: 33132, Stop: 32614, Start Num: 1

Candidate Starts for Gancho_42:

(Start: 1 @33132 has 4 MA's), (6, 33078), (Start: 8 @33039 has 3 MA's), (11, 33015), (19, 32973), (20, 32970), (23, 32949), (26, 32928), (28, 32898), (31, 32796), (39, 32682), (40, 32667), (41, 32664), (42, 32643), (47, 32622),

Gene: GodPhather_45 Start: 40971, Stop: 41372, Start Num: 9

Candidate Starts for GodPhather_45:

(Start: 9 @40971 has 8 MA's), (14, 40986), (31, 41202), (32, 41208), (33, 41223), (37, 41283), (38, 41301), (39, 41304), (40, 41319), (45, 41358), (46, 41361),

Gene: Gravaillia_42 Start: 33359, Stop: 32934, Start Num: 8

Candidate Starts for Gravaillia_42:

(Start: 1 @33452 has 4 MA's), (Start: 8 @33359 has 3 MA's), (11, 33335), (20, 33290), (23, 33269), (26, 33248), (31, 33116), (39, 33002), (40, 32987), (42, 32963),

Gene: Indlulamithi_55 Start: 41815, Stop: 42213, Start Num: 13

Candidate Starts for Indlulamithi_55:

(10, 41809), (Start: 13 @41815 has 2 MA's), (24, 41890), (35, 42121),

Gene: Jeon_44 Start: 40713, Stop: 41114, Start Num: 9

Candidate Starts for Jeon_44:

(Start: 9 @40713 has 8 MA's), (14, 40728), (31, 40944), (32, 40950), (33, 40965), (37, 41025), (38, 41043), (39, 41046), (40, 41061), (45, 41100), (46, 41103),

Gene: Megabear_44 Start: 40128, Stop: 40529, Start Num: 9

Candidate Starts for Megabear_44:

(Start: 9 @40128 has 8 MA's), (14, 40143), (31, 40359), (32, 40365), (33, 40380), (37, 40440), (38, 40458), (39, 40461), (40, 40476), (45, 40515), (46, 40518),

Gene: MontyDev_56 Start: 42299, Stop: 42769, Start Num: 5

Candidate Starts for MontyDev_56:

(Start: 5 @42299 has 6 MA's), (Start: 8 @42338 has 3 MA's), (Start: 13 @42368 has 2 MA's), (Start: 15 @42380 has 1 MA's), (16, 42392), (19, 42407), (21, 42413), (27, 42464), (30, 42578), (33, 42608), (38, 42698), (39, 42701), (40, 42716),

Gene: MrMiyagi_55 Start: 39832, Stop: 40308, Start Num: 3

Candidate Starts for MrMiyagi_55:

(Start: 3 @39832 has 2 MA's), (Start: 8 @39886 has 3 MA's), (12, 39913), (Start: 13 @39916 has 2 MA's), (21, 39961), (22, 39970), (25, 39997), (28, 40024), (41, 40255),

Gene: Nilo_57 Start: 42651, Stop: 43121, Start Num: 5

Candidate Starts for Nilo_57:

(Start: 5 @42651 has 6 MA's), (Start: 8 @42690 has 3 MA's), (Start: 13 @42720 has 2 MA's), (Start: 15 @42732 has 1 MA's), (16, 42744), (19, 42759), (21, 42765), (27, 42816), (30, 42930), (33, 42960), (38, 43050), (39, 43053), (40, 43068),

Gene: PR_44 Start: 40732, Stop: 41133, Start Num: 9

Candidate Starts for PR_44:

(Start: 9 @40732 has 8 MA's), (14, 40747), (31, 40963), (32, 40969), (33, 40984), (37, 41044), (38, 41062), (39, 41065), (40, 41080), (45, 41119), (46, 41122),

Gene: Papyrus_56 Start: 42546, Stop: 42977, Start Num: 8

Candidate Starts for Papyrus_56:

(Start: 8 @42546 has 3 MA's), (Start: 13 @42576 has 2 MA's), (Start: 15 @42588 has 1 MA's), (16, 42600), (21, 42621), (27, 42672), (30, 42786), (33, 42816), (38, 42906), (39, 42909), (40, 42924),

Gene: Riparian_57 Start: 42099, Stop: 42569, Start Num: 5

Candidate Starts for Riparian_57:

(Start: 5 @42099 has 6 MA's), (Start: 8 @42138 has 3 MA's), (Start: 13 @42168 has 2 MA's), (Start: 15 @42180 has 1 MA's), (16, 42192), (19, 42207), (21, 42213), (27, 42264), (30, 42378), (33, 42408), (38, 42498), (39, 42501), (40, 42516),

Gene: Rope_56 Start: 42577, Stop: 42966, Start Num: 15

Candidate Starts for Rope_56:

(Start: 8 @42535 has 3 MA's), (Start: 13 @42565 has 2 MA's), (Start: 15 @42577 has 1 MA's), (16, 42589), (19, 42604), (21, 42610), (27, 42661), (30, 42775), (33, 42805), (38, 42895), (39, 42898), (40, 42913),

Gene: Sbash_50 Start: 38735, Stop: 39223, Start Num: 2

Candidate Starts for Sbash_50:

(Start: 2 @38735 has 1 MA's), (7, 38795), (17, 38855), (23, 38891), (33, 39074), (34, 39119), (36, 39131), (38, 39152), (39, 39155), (40, 39170), (43, 39206), (45, 39209), (46, 39212),

Gene: Send513_56 Start: 42632, Stop: 43102, Start Num: 5

Candidate Starts for Send513_56:

(Start: 5 @42632 has 6 MA's), (Start: 8 @42671 has 3 MA's), (Start: 13 @42701 has 2 MA's), (Start: 15 @42713 has 1 MA's), (16, 42725), (19, 42740), (21, 42746), (27, 42797), (30, 42911), (33, 42941), (38, 43031), (39, 43034), (40, 43049),

Gene: Taptic_44 Start: 40128, Stop: 40529, Start Num: 9

Candidate Starts for Taptic_44:

(Start: 9 @40128 has 8 MA's), (14, 40143), (31, 40359), (32, 40365), (33, 40380), (37, 40440), (38, 40458), (39, 40461), (40, 40476), (45, 40515), (46, 40518),

Gene: Weiss13_55 Start: 42405, Stop: 42806, Start Num: 13

Candidate Starts for Weiss13_55:

(Start: 13 @42405 has 2 MA's), (Start: 15 @42417 has 1 MA's), (16, 42429), (18, 42441), (21, 42450), (27, 42501), (30, 42615), (33, 42645), (38, 42735), (39, 42738),

Gene: Wishmaker_41 Start: 33409, Stop: 32891, Start Num: 1

Candidate Starts for Wishmaker_41:

(Start: 1 @33409 has 4 MA's), (Start: 8 @33316 has 3 MA's), (11, 33292), (19, 33250), (20, 33247), (23, 33226), (26, 33205), (28, 33175), (31, 33073), (39, 32959), (40, 32944), (41, 32941), (42, 32920), (47, 32899),

Gene: Yelo_55 Start: 42715, Stop: 43185, Start Num: 5

Candidate Starts for Yelo_55:

(Start: 5 @42715 has 6 MA's), (Start: 8 @42754 has 3 MA's), (Start: 13 @42784 has 2 MA's), (Start: 15 @42796 has 1 MA's), (16, 42808), (19, 42823), (21, 42829), (27, 42880), (30, 42994), (33, 43024), (38, 43114), (39, 43117), (40, 43132),

Gene: Zenon_56 Start: 42661, Stop: 43131, Start Num: 5

Candidate Starts for Zenon_56:

(Start: 5 @42661 has 6 MA's), (Start: 8 @42700 has 3 MA's), (Start: 13 @42730 has 2 MA's), (Start: 15 @42742 has 1 MA's), (16, 42754), (19, 42769), (21, 42775), (27, 42826), (30, 42940), (33, 42970), (38, 43060), (39, 43063), (40, 43078),