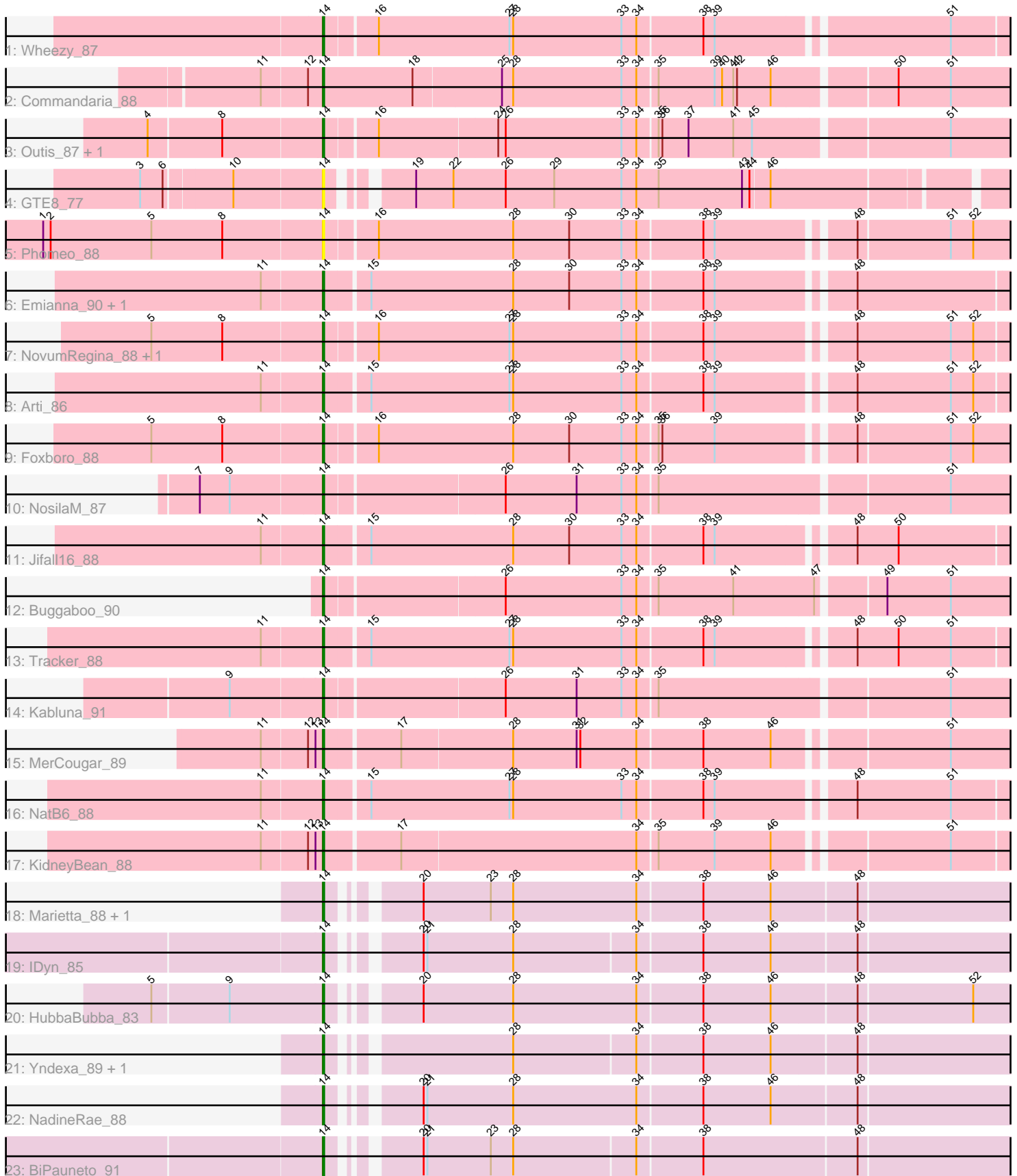


Pham 216444



Note: Tracks are now grouped by subcluster and scaled. Switching in subcluster is indicated by changes in track color. Track scale is now set by default to display the region 30 bp upstream of start 1 to 30 bp downstream of the last possible start. If this default region is judged to be packed too tightly with annotated starts, the track will be further scaled to only show that region of the ORF with annotated starts. This action will be indicated by adding "Zoomed" to the title. For starts, yellow indicates the location of called starts comprised solely of Glimmer/GeneMark auto-annotations, green indicates the location of called starts with at least 1 manual gene annotation.

Pham 216444 Report

This analysis was run 02/22/25 on database version 588.

Pham number 216444 has 28 members, 2 are drafts.

Phages represented in each track:

- Track 1 : Wheezy_87
- Track 2 : Commandaria_88
- Track 3 : Outis_87, StarStruck_87
- Track 4 : GTE8_77
- Track 5 : Phomeo_88
- Track 6 : Emianna_90, Kurt_90
- Track 7 : NovumRegina_88, GrootJr_90
- Track 8 : Arti_86
- Track 9 : Foxboro_88
- Track 10 : NosilaM_87
- Track 11 : Jifall16_88
- Track 12 : Buggaboo_90
- Track 13 : Tracker_88
- Track 14 : Kabluna_91
- Track 15 : MerCougar_89
- Track 16 : NatB6_88
- Track 17 : KidneyBean_88
- Track 18 : Marietta_88, WhoseManz_88
- Track 19 : IDyn_85
- Track 20 : HubbaBubba_83
- Track 21 : Yndexa_89, Sukkupi_89
- Track 22 : NadineRae_88
- Track 23 : BiPauneto_91

Summary of Final Annotations (See graph section above for start numbers):

The start number called the most often in the published annotations is 14, it was called in 26 of the 26 non-draft genes in the pham.

Genes that call this "Most Annotated" start:

- Arti_86, BiPauneto_91, Buggaboo_90, Commandaria_88, Emianna_90, Foxboro_88, GTE8_77, GrootJr_90, HubbaBubba_83, IDyn_85, Jifall16_88, Kabluna_91, KidneyBean_88, Kurt_90, Marietta_88, MerCougar_89, NadineRae_88, NatB6_88, NosilaM_87, NovumRegina_88, Outis_87, Phomeo_88, StarStruck_87,

Sukkupi_89, Tracker_88, Wheezy_87, WhoseManz_88, Yndexa_89,

Genes that have the "Most Annotated" start but do not call it:

-

Genes that do not have the "Most Annotated" start:

-

Summary by start number:

Start 14:

- Found in 28 of 28 (100.0%) of genes in pham
- Manual Annotations of this start: 26 of 26
- Called 100.0% of time when present
- Phage (with cluster) where this start called: Arti_86 (CR2), BiPauneto_91 (CR4), Buggaboo_90 (CR2), Commandaria_88 (CR2), Emianna_90 (CR2), Foxboro_88 (CR2), GTE8_77 (CR2), GrootJr_90 (CR2), HubbaBubba_83 (CR4), IDyn_85 (CR4), Jifall16_88 (CR2), Kabluna_91 (CR2), KidneyBean_88 (CR2), Kurt_90 (CR2), Marietta_88 (CR4), MerCougar_89 (CR2), NadineRae_88 (CR4), NatB6_88 (CR2), NosilaM_87 (CR2), NovumRegina_88 (CR2), Outis_87 (CR2), Phomeo_88 (CR2), StarStruck_87 (CR2), Sukkupi_89 (CR4), Tracker_88 (CR2), Wheezy_87 (CR2), WhoseManz_88 (CR4), Yndexa_89 (CR4),

Summary by clusters:

There are 2 clusters represented in this pham: CR2, CR4,

Info for manual annotations of cluster CR2:

- Start number 14 was manually annotated 18 times for cluster CR2.

Info for manual annotations of cluster CR4:

- Start number 14 was manually annotated 8 times for cluster CR4.

Gene Information:

Gene: Arti_86 Start: 63875, Stop: 64402, Start Num: 14

Candidate Starts for Arti_86:

(11, 63827), (Start: 14 @63875 has 26 MA's), (15, 63908), (27, 64019), (28, 64022), (33, 64109), (34, 64121), (38, 64172), (39, 64181), (48, 64280), (51, 64355), (52, 64373),

Gene: BiPauneto_91 Start: 63698, Stop: 64219, Start Num: 14

Candidate Starts for BiPauneto_91:

(Start: 14 @63698 has 26 MA's), (20, 63752), (21, 63755), (23, 63806), (28, 63824), (34, 63920), (38, 63971), (48, 64091),

Gene: Buggaboo_90 Start: 65654, Stop: 66184, Start Num: 14

Candidate Starts for Buggaboo_90:

(Start: 14 @65654 has 26 MA's), (26, 65792), (33, 65885), (34, 65897), (35, 65912), (41, 65972), (47, 66035), (49, 66083), (51, 66134),

Gene: Commandaria_88 Start: 64839, Stop: 65375, Start Num: 14

Candidate Starts for Commandaria_88:

(11, 64791), (12, 64827), (Start: 14 @64839 has 26 MA's), (18, 64911), (25, 64980), (28, 64989), (33, 65076), (34, 65088), (35, 65103), (39, 65148), (40, 65154), (41, 65163), (42, 65166), (46, 65193), (50, 65283), (51, 65325),

Gene: Emianna_90 Start: 65575, Stop: 66105, Start Num: 14

Candidate Starts for Emianna_90:

(11, 65527), (Start: 14 @65575 has 26 MA's), (15, 65608), (28, 65722), (30, 65767), (33, 65809), (34, 65821), (38, 65872), (39, 65881), (48, 65980),

Gene: Foxboro_88 Start: 65188, Stop: 65715, Start Num: 14

Candidate Starts for Foxboro_88:

(5, 65053), (8, 65110), (Start: 14 @65188 has 26 MA's), (16, 65227), (28, 65335), (30, 65380), (33, 65422), (34, 65434), (35, 65449), (36, 65452), (39, 65494), (48, 65593), (51, 65665), (52, 65683),

Gene: GTE8_77 Start: 57782, Stop: 58288, Start Num: 14

Candidate Starts for GTE8_77:

(3, 57647), (6, 57665), (10, 57716), (Start: 14 @57782 has 26 MA's), (19, 57830), (22, 57860), (26, 57902), (29, 57941), (33, 57995), (34, 58007), (35, 58025), (43, 58091), (44, 58097), (46, 58112),

Gene: GrootJr_90 Start: 64582, Stop: 65109, Start Num: 14

Candidate Starts for GrootJr_90:

(5, 64447), (8, 64504), (Start: 14 @64582 has 26 MA's), (16, 64621), (27, 64726), (28, 64729), (33, 64816), (34, 64828), (38, 64879), (39, 64888), (48, 64987), (51, 65062), (52, 65080),

Gene: HubbaBubba_83 Start: 60704, Stop: 61228, Start Num: 14

Candidate Starts for HubbaBubba_83:

(5, 60575), (9, 60635), (Start: 14 @60704 has 26 MA's), (20, 60758), (28, 60830), (34, 60929), (38, 60980), (46, 61034), (48, 61100), (52, 61190),

Gene: IDyn_85 Start: 61348, Stop: 61869, Start Num: 14

Candidate Starts for IDyn_85:

(Start: 14 @61348 has 26 MA's), (20, 61402), (21, 61405), (28, 61474), (34, 61570), (38, 61621), (46, 61675), (48, 61741),

Gene: Jifall16_88 Start: 64831, Stop: 65361, Start Num: 14

Candidate Starts for Jifall16_88:

(11, 64783), (Start: 14 @64831 has 26 MA's), (15, 64864), (28, 64978), (30, 65023), (33, 65065), (34, 65077), (38, 65128), (39, 65137), (48, 65236), (50, 65269),

Gene: Kabluna_91 Start: 62835, Stop: 63365, Start Num: 14

Candidate Starts for Kabluna_91:

(9, 62769), (Start: 14 @62835 has 26 MA's), (26, 62973), (31, 63030), (33, 63066), (34, 63078), (35, 63093), (51, 63315),

Gene: KidneyBean_88 Start: 65168, Stop: 65689, Start Num: 14

Candidate Starts for KidneyBean_88:

(11, 65120), (12, 65156), (13, 65162), (Start: 14 @65168 has 26 MA's), (17, 65225), (34, 65411), (35, 65426), (39, 65471), (46, 65516), (51, 65642),

Gene: Kurt_90 Start: 65590, Stop: 66120, Start Num: 14

Candidate Starts for Kurt_90:

(11, 65542), (Start: 14 @65590 has 26 MA's), (15, 65623), (28, 65737), (30, 65782), (33, 65824), (34, 65836), (38, 65887), (39, 65896), (48, 65995),

Gene: Marietta_88 Start: 61393, Stop: 61917, Start Num: 14

Candidate Starts for Marietta_88:

(Start: 14 @61393 has 26 MA's), (20, 61447), (23, 61501), (28, 61519), (34, 61618), (38, 61669), (46, 61723), (48, 61789),

Gene: MerCougar_89 Start: 65392, Stop: 65916, Start Num: 14

Candidate Starts for MerCougar_89:

(11, 65344), (12, 65380), (13, 65386), (Start: 14 @65392 has 26 MA's), (17, 65449), (28, 65536), (31, 65587), (32, 65590), (34, 65635), (38, 65686), (46, 65740), (51, 65866),

Gene: NadineRae_88 Start: 61324, Stop: 61848, Start Num: 14

Candidate Starts for NadineRae_88:

(Start: 14 @61324 has 26 MA's), (20, 61378), (21, 61381), (28, 61450), (34, 61549), (38, 61600), (46, 61654), (48, 61720),

Gene: NatB6_88 Start: 64224, Stop: 64754, Start Num: 14

Candidate Starts for NatB6_88:

(11, 64176), (Start: 14 @64224 has 26 MA's), (15, 64257), (27, 64368), (28, 64371), (33, 64458), (34, 64470), (38, 64521), (39, 64530), (48, 64629), (51, 64704),

Gene: NosilaM_87 Start: 64242, Stop: 64772, Start Num: 14

Candidate Starts for NosilaM_87:

(7, 64152), (9, 64176), (Start: 14 @64242 has 26 MA's), (26, 64380), (31, 64437), (33, 64473), (34, 64485), (35, 64500), (51, 64722),

Gene: NovumRegina_88 Start: 64581, Stop: 65108, Start Num: 14

Candidate Starts for NovumRegina_88:

(5, 64446), (8, 64503), (Start: 14 @64581 has 26 MA's), (16, 64620), (27, 64725), (28, 64728), (33, 64815), (34, 64827), (38, 64878), (39, 64887), (48, 64986), (51, 65061), (52, 65079),

Gene: Outis_87 Start: 64661, Stop: 65191, Start Num: 14

Candidate Starts for Outis_87:

(4, 64529), (8, 64586), (Start: 14 @64661 has 26 MA's), (16, 64700), (24, 64793), (26, 64799), (33, 64892), (34, 64904), (35, 64919), (36, 64922), (37, 64943), (41, 64979), (45, 64994), (51, 65141),

Gene: Phomeo_88 Start: 64835, Stop: 65362, Start Num: 14

Candidate Starts for Phomeo_88:

(1, 64613), (2, 64619), (5, 64700), (8, 64757), (Start: 14 @64835 has 26 MA's), (16, 64874), (28, 64982), (30, 65027), (33, 65069), (34, 65081), (38, 65132), (39, 65141), (48, 65240), (51, 65312), (52, 65330),

Gene: StarStruck_87 Start: 64661, Stop: 65191, Start Num: 14

Candidate Starts for StarStruck_87:

(4, 64529), (8, 64586), (Start: 14 @64661 has 26 MA's), (16, 64700), (24, 64793), (26, 64799), (33, 64892), (34, 64904), (35, 64919), (36, 64922), (37, 64943), (41, 64979), (45, 64994), (51, 65141),

Gene: Sukkupi_89 Start: 63513, Stop: 64034, Start Num: 14

Candidate Starts for Sukkupi_89:

(Start: 14 @63513 has 26 MA's), (28, 63639), (34, 63735), (38, 63786), (46, 63840), (48, 63906),

Gene: Tracker_88 Start: 64007, Stop: 64537, Start Num: 14

Candidate Starts for Tracker_88:

(11, 63959), (Start: 14 @64007 has 26 MA's), (15, 64040), (27, 64151), (28, 64154), (33, 64241), (34, 64253), (38, 64304), (39, 64313), (48, 64412), (50, 64445), (51, 64487),

Gene: Wheezy_87 Start: 64406, Stop: 64936, Start Num: 14

Candidate Starts for Wheezy_87:

(Start: 14 @64406 has 26 MA's), (16, 64445), (27, 64550), (28, 64553), (33, 64640), (34, 64652), (38, 64703), (39, 64712), (51, 64886),

Gene: WhoseManz_88 Start: 61056, Stop: 61580, Start Num: 14

Candidate Starts for WhoseManz_88:

(Start: 14 @61056 has 26 MA's), (20, 61110), (23, 61164), (28, 61182), (34, 61281), (38, 61332), (46, 61386), (48, 61452),

Gene: Yndexa_89 Start: 63513, Stop: 64034, Start Num: 14

Candidate Starts for Yndexa_89:

(Start: 14 @63513 has 26 MA's), (28, 63639), (34, 63735), (38, 63786), (46, 63840), (48, 63906),