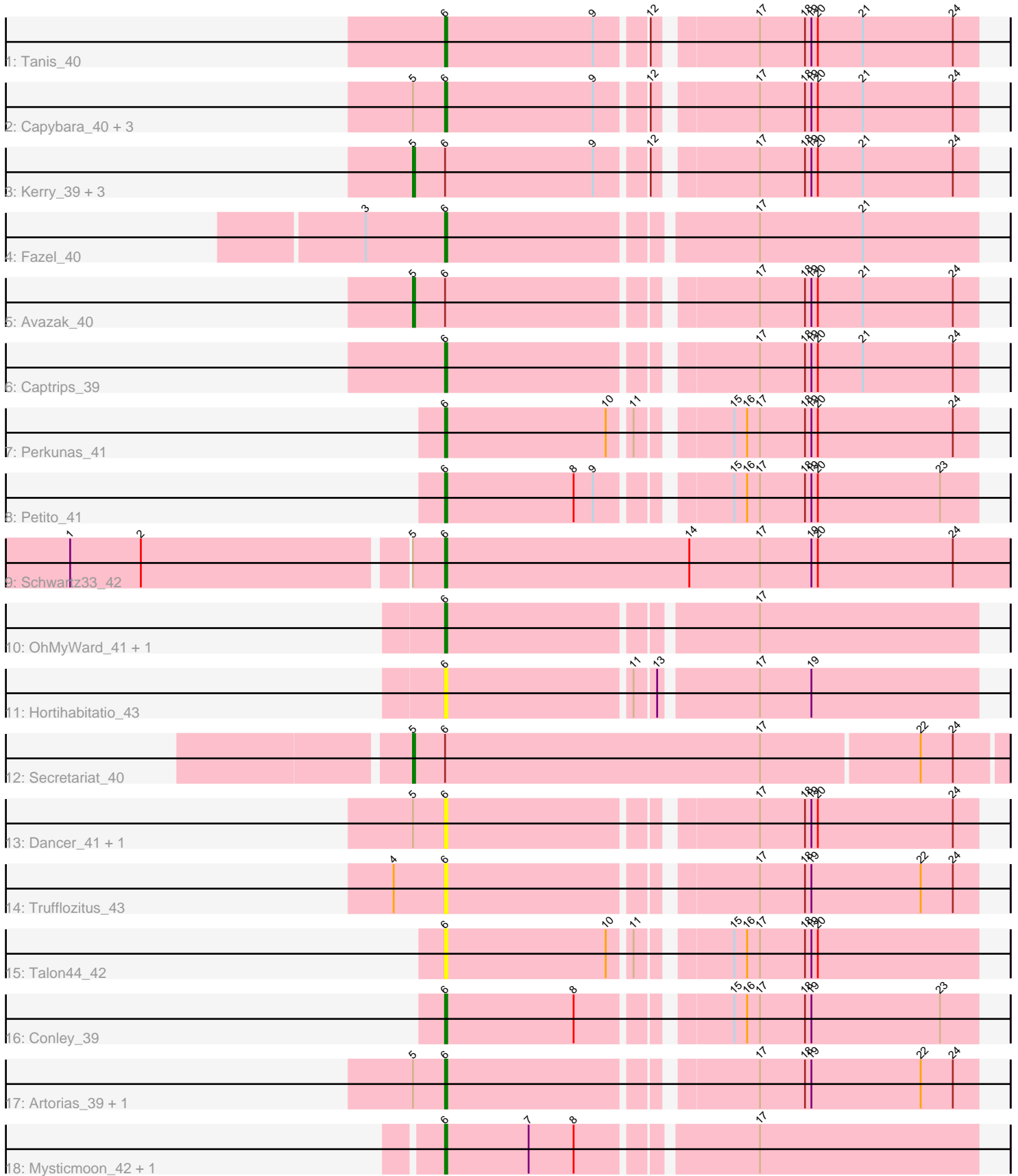


Pham 216452



Note: Tracks are now grouped by subcluster and scaled. Switching in subcluster is indicated by changes in track color. Track scale is now set by default to display the region 30 bp upstream of start 1 to 30 bp downstream of the last possible start. If this default region is judged to be packed too tightly with annotated starts, the track will be further scaled to only show that region of the ORF with annotated starts. This action will be indicated by adding "Zoomed" to the title. For starts, yellow indicates the location of called starts comprised solely of Glimmer/GeneMark auto-annotations, green indicates the location of called starts with at least 1 manual gene annotation.

Pham 216452 Report

This analysis was run 02/22/25 on database version 588.

Pham number 216452 has 28 members, 7 are drafts.

Phages represented in each track:

- Track 1 : Tanis_40
- Track 2 : Capybara_40, Gill_40, Roney_40, NoPickles_39
- Track 3 : Kerry_39, Magel_41, Gravy_39, Odesza_39
- Track 4 : Fazel_40
- Track 5 : Avazak_40
- Track 6 : Captrips_39
- Track 7 : Perkunas_41
- Track 8 : Petite_41
- Track 9 : Schwartz33_42
- Track 10 : OhMyWard_41, Mossy_43
- Track 11 : Hortihabitatio_43
- Track 12 : Secretariat_40
- Track 13 : Dancer_41, JulesRay_41
- Track 14 : Trufflozitus_43
- Track 15 : Talon44_42
- Track 16 : Conley_39
- Track 17 : Artorias_39, FortCran_39
- Track 18 : Mysticmoon_42, Pherobrine_42

Summary of Final Annotations (See graph section above for start numbers):

The start number called the most often in the published annotations is 6, it was called in 15 of the 21 non-draft genes in the pham.

Genes that call this "Most Annotated" start:

- Artorias_39, Captrips_39, Capybara_40, Conley_39, Dancer_41, Fazel_40, FortCran_39, Gill_40, Hortihabitatio_43, JulesRay_41, Mossy_43, Mysticmoon_42, NoPickles_39, OhMyWard_41, Perkunas_41, Petite_41, Pherobrine_42, Roney_40, Schwartz33_42, Talon44_42, Tanis_40, Trufflozitus_43,

Genes that have the "Most Annotated" start but do not call it:

- Avazak_40, Gravy_39, Kerry_39, Magel_41, Odesza_39, Secretariat_40,

Genes that do not have the "Most Annotated" start:

•

Summary by start number:

Start 5:

- Found in 15 of 28 (53.6%) of genes in pham
- Manual Annotations of this start: 6 of 21
- Called 40.0% of time when present
- Phage (with cluster) where this start called: Avazak_40 (DJ), Gravy_39 (DJ), Kerry_39 (DJ), Magel_41 (DJ), Odesza_39 (DJ), Secretariat_40 (DJ),

Start 6:

- Found in 28 of 28 (100.0%) of genes in pham
- Manual Annotations of this start: 15 of 21
- Called 78.6% of time when present
- Phage (with cluster) where this start called: Artorias_39 (DJ), Captrips_39 (DJ), Capybara_40 (DJ), Conley_39 (DJ), Dancer_41 (DJ), Fazel_40 (DJ), FortCran_39 (DJ), Gill_40 (DJ), Hortihabitatio_43 (DJ), JulesRay_41 (DJ), Mossy_43 (DJ), Mysticmoon_42 (DJ), NoPickles_39 (DJ), OhMyWard_41 (DJ), Perkunas_41 (DJ), Petite_41 (DJ), Pherobrine_42 (DJ), Roney_40 (DJ), Schwartz33_42 (DJ), Talon44_42 (DJ), Tanis_40 (DJ), Trufflozitus_43 (DJ),

Summary by clusters:

There is one cluster represented in this pham: DJ

Info for manual annotations of cluster DJ:

- Start number 5 was manually annotated 6 times for cluster DJ.
- Start number 6 was manually annotated 15 times for cluster DJ.

Gene Information:

Gene: Artorias_39 Start: 30605, Stop: 30838, Start Num: 6

Candidate Starts for Artorias_39:

(Start: 5 @30590 has 6 MA's), (Start: 6 @30605 has 15 MA's), (17, 30737), (18, 30758), (19, 30761), (22, 30812), (24, 30827),

Gene: Avazak_40 Start: 30958, Stop: 31206, Start Num: 5

Candidate Starts for Avazak_40:

(Start: 5 @30958 has 6 MA's), (Start: 6 @30973 has 15 MA's), (17, 31105), (18, 31126), (19, 31129), (20, 31132), (21, 31153), (24, 31195),

Gene: Captrips_39 Start: 30645, Stop: 30878, Start Num: 6

Candidate Starts for Captrips_39:

(Start: 6 @30645 has 15 MA's), (17, 30777), (18, 30798), (19, 30801), (20, 30804), (21, 30825), (24, 30867),

Gene: Capybara_40 Start: 31035, Stop: 31268, Start Num: 6

Candidate Starts for Capybara_40:

(Start: 5 @31020 has 6 MA's), (Start: 6 @31035 has 15 MA's), (9, 31104), (12, 31125), (17, 31167), (18, 31188), (19, 31191), (20, 31194), (21, 31215), (24, 31257),

Gene: Conley_39 Start: 31573, Stop: 31806, Start Num: 6

Candidate Starts for Conley_39:

(Start: 6 @31573 has 15 MA's), (8, 31633), (15, 31693), (16, 31699), (17, 31705), (18, 31726), (19, 31729), (23, 31789),

Gene: Dancer_41 Start: 30345, Stop: 30578, Start Num: 6

Candidate Starts for Dancer_41:

(Start: 5 @30330 has 6 MA's), (Start: 6 @30345 has 15 MA's), (17, 30477), (18, 30498), (19, 30501), (20, 30504), (24, 30567),

Gene: Fazel_40 Start: 32562, Stop: 32798, Start Num: 6

Candidate Starts for Fazel_40:

(3, 32526), (Start: 6 @32562 has 15 MA's), (17, 32697), (21, 32745),

Gene: FortCran_39 Start: 30605, Stop: 30838, Start Num: 6

Candidate Starts for FortCran_39:

(Start: 5 @30590 has 6 MA's), (Start: 6 @30605 has 15 MA's), (17, 30737), (18, 30758), (19, 30761), (22, 30812), (24, 30827),

Gene: Gill_40 Start: 31052, Stop: 31285, Start Num: 6

Candidate Starts for Gill_40:

(Start: 5 @31037 has 6 MA's), (Start: 6 @31052 has 15 MA's), (9, 31121), (12, 31142), (17, 31184), (18, 31205), (19, 31208), (20, 31211), (21, 31232), (24, 31274),

Gene: Gravy_39 Start: 30710, Stop: 30958, Start Num: 5

Candidate Starts for Gravy_39:

(Start: 5 @30710 has 6 MA's), (Start: 6 @30725 has 15 MA's), (9, 30794), (12, 30815), (17, 30857), (18, 30878), (19, 30881), (20, 30884), (21, 30905), (24, 30947),

Gene: Hortihabitatio_43 Start: 33009, Stop: 33245, Start Num: 6

Candidate Starts for Hortihabitatio_43:

(Start: 6 @33009 has 15 MA's), (11, 33093), (13, 33102), (17, 33144), (19, 33168),

Gene: JulesRay_41 Start: 30639, Stop: 30872, Start Num: 6

Candidate Starts for JulesRay_41:

(Start: 5 @30624 has 6 MA's), (Start: 6 @30639 has 15 MA's), (17, 30771), (18, 30792), (19, 30795), (20, 30798), (24, 30861),

Gene: Kerry_39 Start: 30710, Stop: 30958, Start Num: 5

Candidate Starts for Kerry_39:

(Start: 5 @30710 has 6 MA's), (Start: 6 @30725 has 15 MA's), (9, 30794), (12, 30815), (17, 30857), (18, 30878), (19, 30881), (20, 30884), (21, 30905), (24, 30947),

Gene: Magel_41 Start: 30941, Stop: 31189, Start Num: 5

Candidate Starts for Magel_41:

(Start: 5 @30941 has 6 MA's), (Start: 6 @30956 has 15 MA's), (9, 31025), (12, 31046), (17, 31088), (18, 31109), (19, 31112), (20, 31115), (21, 31136), (24, 31178),

Gene: Mossy_43 Start: 34779, Stop: 35015, Start Num: 6

Candidate Starts for Mossy_43:

(Start: 6 @34779 has 15 MA's), (17, 34914),

Gene: Mysticmoon_42 Start: 33303, Stop: 33539, Start Num: 6
Candidate Starts for Mysticmoon_42:
(Start: 6 @33303 has 15 MA's), (7, 33342), (8, 33363), (17, 33438),

Gene: NoPickles_39 Start: 30357, Stop: 30590, Start Num: 6
Candidate Starts for NoPickles_39:
(Start: 5 @30342 has 6 MA's), (Start: 6 @30357 has 15 MA's), (9, 30426), (12, 30447), (17, 30489),
(18, 30510), (19, 30513), (20, 30516), (21, 30537), (24, 30579),

Gene: Odesza_39 Start: 30711, Stop: 30959, Start Num: 5
Candidate Starts for Odesza_39:
(Start: 5 @30711 has 6 MA's), (Start: 6 @30726 has 15 MA's), (9, 30795), (12, 30816), (17, 30858),
(18, 30879), (19, 30882), (20, 30885), (21, 30906), (24, 30948),

Gene: OhMyWard_41 Start: 34121, Stop: 34357, Start Num: 6
Candidate Starts for OhMyWard_41:
(Start: 6 @34121 has 15 MA's), (17, 34256),

Gene: Perkunas_41 Start: 31004, Stop: 31237, Start Num: 6
Candidate Starts for Perkunas_41:
(Start: 6 @31004 has 15 MA's), (10, 31079), (11, 31088), (15, 31124), (16, 31130), (17, 31136), (18,
31157), (19, 31160), (20, 31163), (24, 31226),

Gene: Petito_41 Start: 32107, Stop: 32340, Start Num: 6
Candidate Starts for Petito_41:
(Start: 6 @32107 has 15 MA's), (8, 32167), (9, 32176), (15, 32227), (16, 32233), (17, 32239), (18,
32260), (19, 32263), (20, 32266), (23, 32323),

Gene: Pherobrine_42 Start: 33604, Stop: 33840, Start Num: 6
Candidate Starts for Pherobrine_42:
(Start: 6 @33604 has 15 MA's), (7, 33643), (8, 33664), (17, 33739),

Gene: Roney_40 Start: 31047, Stop: 31280, Start Num: 6
Candidate Starts for Roney_40:
(Start: 5 @31032 has 6 MA's), (Start: 6 @31047 has 15 MA's), (9, 31116), (12, 31137), (17, 31179),
(18, 31200), (19, 31203), (20, 31206), (21, 31227), (24, 31269),

Gene: Schwartz33_42 Start: 33399, Stop: 33662, Start Num: 6
Candidate Starts for Schwartz33_42:
(1, 33231), (2, 33264), (Start: 5 @33384 has 6 MA's), (Start: 6 @33399 has 15 MA's), (14, 33513), (17,
33546), (19, 33570), (20, 33573), (24, 33636),

Gene: Secretariat_40 Start: 32327, Stop: 32599, Start Num: 5
Candidate Starts for Secretariat_40:
(Start: 5 @32327 has 6 MA's), (Start: 6 @32342 has 15 MA's), (17, 32489), (22, 32561), (24, 32576),

Gene: Talon44_42 Start: 31019, Stop: 31252, Start Num: 6
Candidate Starts for Talon44_42:
(Start: 6 @31019 has 15 MA's), (10, 31094), (11, 31103), (15, 31139), (16, 31145), (17, 31151), (18,
31172), (19, 31175), (20, 31178),

Gene: Tanis_40 Start: 30898, Stop: 31131, Start Num: 6
Candidate Starts for Tanis_40:

(Start: 6 @30898 has 15 MA's), (9, 30967), (12, 30988), (17, 31030), (18, 31051), (19, 31054), (20, 31057), (21, 31078), (24, 31120),

Gene: Trufflozitus_43 Start: 30996, Stop: 31229, Start Num: 6

Candidate Starts for Trufflozitus_43:

(4, 30972), (Start: 6 @30996 has 15 MA's), (17, 31128), (18, 31149), (19, 31152), (22, 31203), (24, 31218),