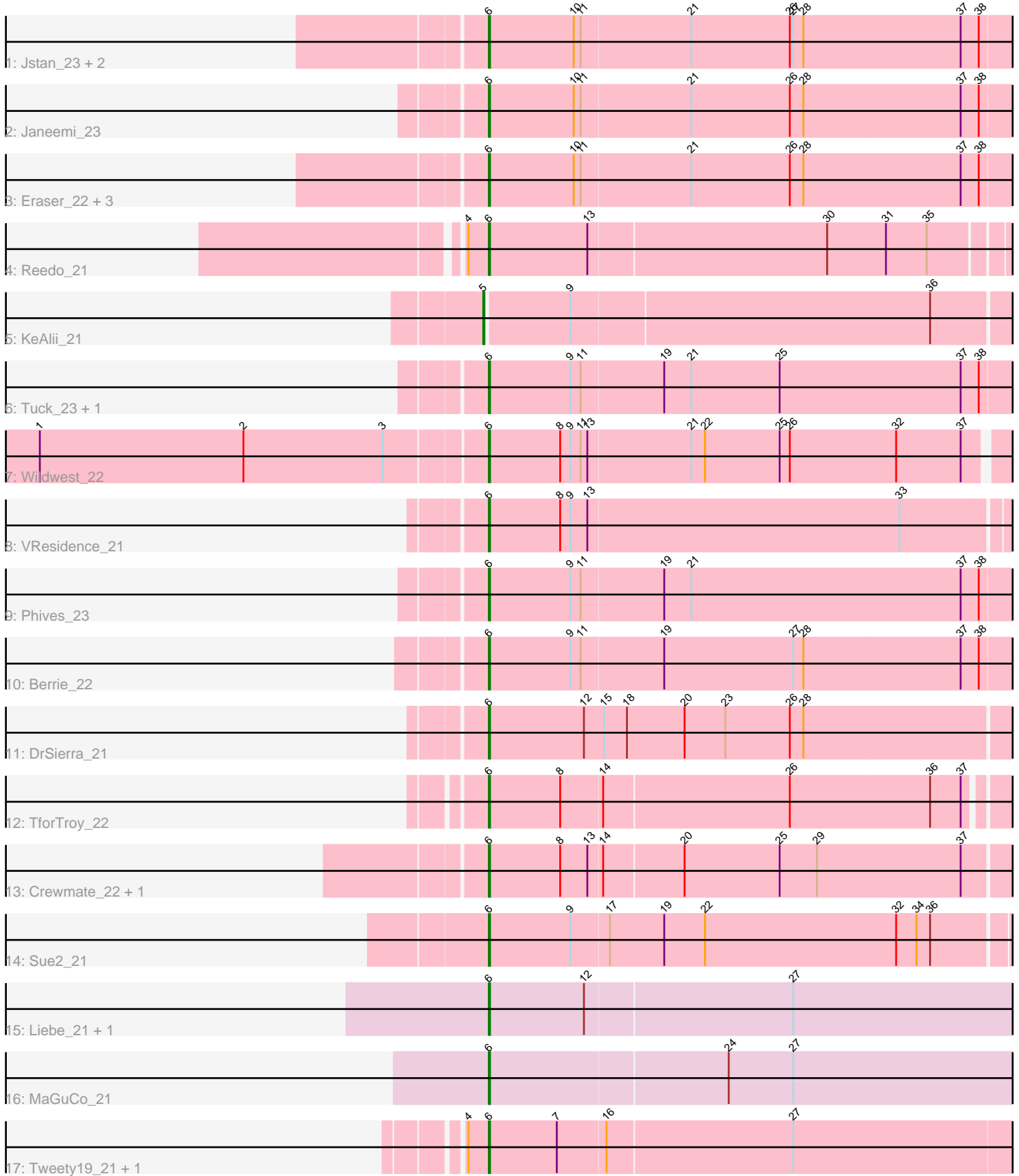


Pham 216475



Note: Tracks are now grouped by subcluster and scaled. Switching in subcluster is indicated by changes in track color. Track scale is now set by default to display the region 30 bp upstream of start 1 to 30 bp downstream of the last possible start. If this default region is judged to be packed too tightly with annotated starts, the track will be further scaled to only show that region of the ORF with annotated starts. This action will be indicated by adding "Zoomed" to the title. For starts, yellow indicates the location of called starts comprised solely of Glimmer/GeneMark auto-annotations, green indicates the location of called starts with at least 1 manual gene annotation.

Pham 216475 Report

This analysis was run 02/22/25 on database version 588.

Pham number 216475 has 26 members, 3 are drafts.

Phages represented in each track:

- Track 1 : Jstan_23, Asa16_22, Niobe_22
- Track 2 : Janeemi_23
- Track 3 : Eraser_22, Elezi_22, London_22, Subaru_23
- Track 4 : Reedo_21
- Track 5 : KeAlii_21
- Track 6 : Tuck_23, Community_22
- Track 7 : Wildwest_22
- Track 8 : VResidence_21
- Track 9 : Phives_23
- Track 10 : Berrie_22
- Track 11 : DrSierra_21
- Track 12 : TforTroy_22
- Track 13 : Crewmate_22, ObiToo_21
- Track 14 : Sue2_21
- Track 15 : Liebe_21, Maureen_21
- Track 16 : MaGuCo_21
- Track 17 : Tweety19_21, Snek_21

Summary of Final Annotations (See graph section above for start numbers):

The start number called the most often in the published annotations is 6, it was called in 22 of the 23 non-draft genes in the pham.

Genes that call this "Most Annotated" start:

- Asa16_22, Berrie_22, Community_22, Crewmate_22, DrSierra_21, Elezi_22, Eraser_22, Janeemi_23, Jstan_23, Liebe_21, London_22, MaGuCo_21, Maureen_21, Niobe_22, ObiToo_21, Phives_23, Reedo_21, Snek_21, Subaru_23, Sue2_21, TforTroy_22, Tuck_23, Tweety19_21, VResidence_21, Wildwest_22,

Genes that have the "Most Annotated" start but do not call it:

-

Genes that do not have the "Most Annotated" start:

- KeAlii_21,

Summary by start number:

Start 5:

- Found in 1 of 26 (3.8%) of genes in pham
- Manual Annotations of this start: 1 of 23
- Called 100.0% of time when present
- Phage (with cluster) where this start called: KeAlii_21 (AZ1),

Start 6:

- Found in 25 of 26 (96.2%) of genes in pham
- Manual Annotations of this start: 22 of 23
- Called 100.0% of time when present
- Phage (with cluster) where this start called: Asa16_22 (AZ1), Berrie_22 (AZ1), Community_22 (AZ1), Crewmate_22 (AZ1), DrSierra_21 (AZ1), Elezi_22 (AZ1), Eraser_22 (AZ1), Janeemi_23 (AZ1), Jstan_23 (AZ1), Liebe_21 (AZ2), London_22 (AZ1), MaGuCo_21 (AZ2), Maureen_21 (AZ2), Niobe_22 (AZ1), ObiToo_21 (AZ1), Phives_23 (AZ1), Reedo_21 (AZ1), Sneek_21 (AZ3), Subaru_23 (AZ), Sue2_21 (AZ1), TforTroy_22 (AZ1), Tuck_23 (AZ1), Tweety19_21 (AZ3), VResidence_21 (AZ1), Wildwest_22 (AZ1),

Summary by clusters:

There are 4 clusters represented in this pham: AZ1, AZ2, AZ3, AZ,

Info for manual annotations of cluster AZ1:

- Start number 5 was manually annotated 1 time for cluster AZ1.
- Start number 6 was manually annotated 17 times for cluster AZ1.

Info for manual annotations of cluster AZ2:

- Start number 6 was manually annotated 3 times for cluster AZ2.

Info for manual annotations of cluster AZ3:

- Start number 6 was manually annotated 2 times for cluster AZ3.

Gene Information:

Gene: Asa16_22 Start: 19280, Stop: 19747, Start Num: 6

Candidate Starts for Asa16_22:

(Start: 6 @19280 has 22 MA's), (10, 19355), (11, 19361), (21, 19457), (26, 19544), (27, 19547), (28, 19556), (37, 19694), (38, 19709),

Gene: Berrie_22 Start: 19835, Stop: 20302, Start Num: 6

Candidate Starts for Berrie_22:

(Start: 6 @19835 has 22 MA's), (9, 19907), (11, 19916), (19, 19988), (27, 20102), (28, 20111), (37, 20249), (38, 20264),

Gene: Community_22 Start: 20920, Stop: 21387, Start Num: 6

Candidate Starts for Community_22:

(Start: 6 @20920 has 22 MA's), (9, 20992), (11, 21001), (19, 21073), (21, 21097), (25, 21175), (37, 21334), (38, 21349),

Gene: Crewmate_22 Start: 17739, Stop: 18200, Start Num: 6

Candidate Starts for Crewmate_22:

(Start: 6 @17739 has 22 MA's), (8, 17802), (13, 17826), (14, 17838), (20, 17907), (25, 17991), (29, 18024), (37, 18150),

Gene: DrSierra_21 Start: 17797, Stop: 18261, Start Num: 6

Candidate Starts for DrSierra_21:

(Start: 6 @17797 has 22 MA's), (12, 17881), (15, 17899), (18, 17917), (20, 17968), (23, 18004), (26, 18061), (28, 18073),

Gene: Elezi_22 Start: 19281, Stop: 19748, Start Num: 6

Candidate Starts for Elezi_22:

(Start: 6 @19281 has 22 MA's), (10, 19356), (11, 19362), (21, 19458), (26, 19545), (28, 19557), (37, 19695), (38, 19710),

Gene: Eraser_22 Start: 19281, Stop: 19748, Start Num: 6

Candidate Starts for Eraser_22:

(Start: 6 @19281 has 22 MA's), (10, 19356), (11, 19362), (21, 19458), (26, 19545), (28, 19557), (37, 19695), (38, 19710),

Gene: Janeemi_23 Start: 20928, Stop: 21395, Start Num: 6

Candidate Starts for Janeemi_23:

(Start: 6 @20928 has 22 MA's), (10, 21003), (11, 21009), (21, 21105), (26, 21192), (28, 21204), (37, 21342), (38, 21357),

Gene: Jstan_23 Start: 19281, Stop: 19748, Start Num: 6

Candidate Starts for Jstan_23:

(Start: 6 @19281 has 22 MA's), (10, 19356), (11, 19362), (21, 19458), (26, 19545), (27, 19548), (28, 19557), (37, 19695), (38, 19710),

Gene: KeAlii_21 Start: 17311, Stop: 17772, Start Num: 5

Candidate Starts for KeAlii_21:

(Start: 5 @17311 has 1 MA's), (9, 17383), (36, 17695),

Gene: Liebe_21 Start: 18736, Stop: 19206, Start Num: 6

Candidate Starts for Liebe_21:

(Start: 6 @18736 has 22 MA's), (12, 18820), (27, 19000),

Gene: London_22 Start: 19281, Stop: 19748, Start Num: 6

Candidate Starts for London_22:

(Start: 6 @19281 has 22 MA's), (10, 19356), (11, 19362), (21, 19458), (26, 19545), (28, 19557), (37, 19695), (38, 19710),

Gene: MaGuCo_21 Start: 18669, Stop: 19139, Start Num: 6

Candidate Starts for MaGuCo_21:

(Start: 6 @18669 has 22 MA's), (24, 18876), (27, 18933),

Gene: Maureen_21 Start: 18736, Stop: 19206, Start Num: 6

Candidate Starts for Maureen_21:

(Start: 6 @18736 has 22 MA's), (12, 18820), (27, 19000),

Gene: Niobe_22 Start: 19281, Stop: 19748, Start Num: 6
Candidate Starts for Niobe_22:
(Start: 6 @19281 has 22 MA's), (10, 19356), (11, 19362), (21, 19458), (26, 19545), (27, 19548), (28, 19557), (37, 19695), (38, 19710),

Gene: ObiToo_21 Start: 17476, Stop: 17937, Start Num: 6
Candidate Starts for ObiToo_21:
(Start: 6 @17476 has 22 MA's), (8, 17539), (13, 17563), (14, 17575), (20, 17644), (25, 17728), (29, 17761), (37, 17887),

Gene: Phives_23 Start: 20757, Stop: 21224, Start Num: 6
Candidate Starts for Phives_23:
(Start: 6 @20757 has 22 MA's), (9, 20829), (11, 20838), (19, 20910), (21, 20934), (37, 21171), (38, 21186),

Gene: Reedo_21 Start: 17318, Stop: 17776, Start Num: 6
Candidate Starts for Reedo_21:
(4, 17300), (Start: 6 @17318 has 22 MA's), (13, 17405), (30, 17612), (31, 17663), (35, 17699),

Gene: Snek_21 Start: 16347, Stop: 16814, Start Num: 6
Candidate Starts for Snek_21:
(4, 16329), (Start: 6 @16347 has 22 MA's), (7, 16407), (16, 16449), (27, 16611),

Gene: Subaru_23 Start: 19281, Stop: 19748, Start Num: 6
Candidate Starts for Subaru_23:
(Start: 6 @19281 has 22 MA's), (10, 19356), (11, 19362), (21, 19458), (26, 19545), (28, 19557), (37, 19695), (38, 19710),

Gene: Sue2_21 Start: 17971, Stop: 18432, Start Num: 6
Candidate Starts for Sue2_21:
(Start: 6 @17971 has 22 MA's), (9, 18043), (17, 18076), (19, 18124), (22, 18160), (32, 18328), (34, 18346), (36, 18358),

Gene: TforTroy_22 Start: 19431, Stop: 19886, Start Num: 6
Candidate Starts for TforTroy_22:
(Start: 6 @19431 has 22 MA's), (8, 19494), (14, 19530), (26, 19692), (36, 19815), (37, 19842),

Gene: Tuck_23 Start: 20900, Stop: 21367, Start Num: 6
Candidate Starts for Tuck_23:
(Start: 6 @20900 has 22 MA's), (9, 20972), (11, 20981), (19, 21053), (21, 21077), (25, 21155), (37, 21314), (38, 21329),

Gene: Tweety19_21 Start: 16346, Stop: 16813, Start Num: 6
Candidate Starts for Tweety19_21:
(4, 16328), (Start: 6 @16346 has 22 MA's), (7, 16406), (16, 16448), (27, 16610),

Gene: VResidence_21 Start: 17376, Stop: 17837, Start Num: 6
Candidate Starts for VResidence_21:
(Start: 6 @17376 has 22 MA's), (8, 17439), (9, 17448), (13, 17463), (33, 17736),

Gene: Wildwest_22 Start: 18728, Stop: 19186, Start Num: 6
Candidate Starts for Wildwest_22:

(1, 18344), (2, 18524), (3, 18647), (Start: 6 @18728 has 22 MA's), (8, 18791), (9, 18800), (11, 18809),
(13, 18815), (21, 18905), (22, 18917), (25, 18983), (26, 18992), (32, 19085), (37, 19142),