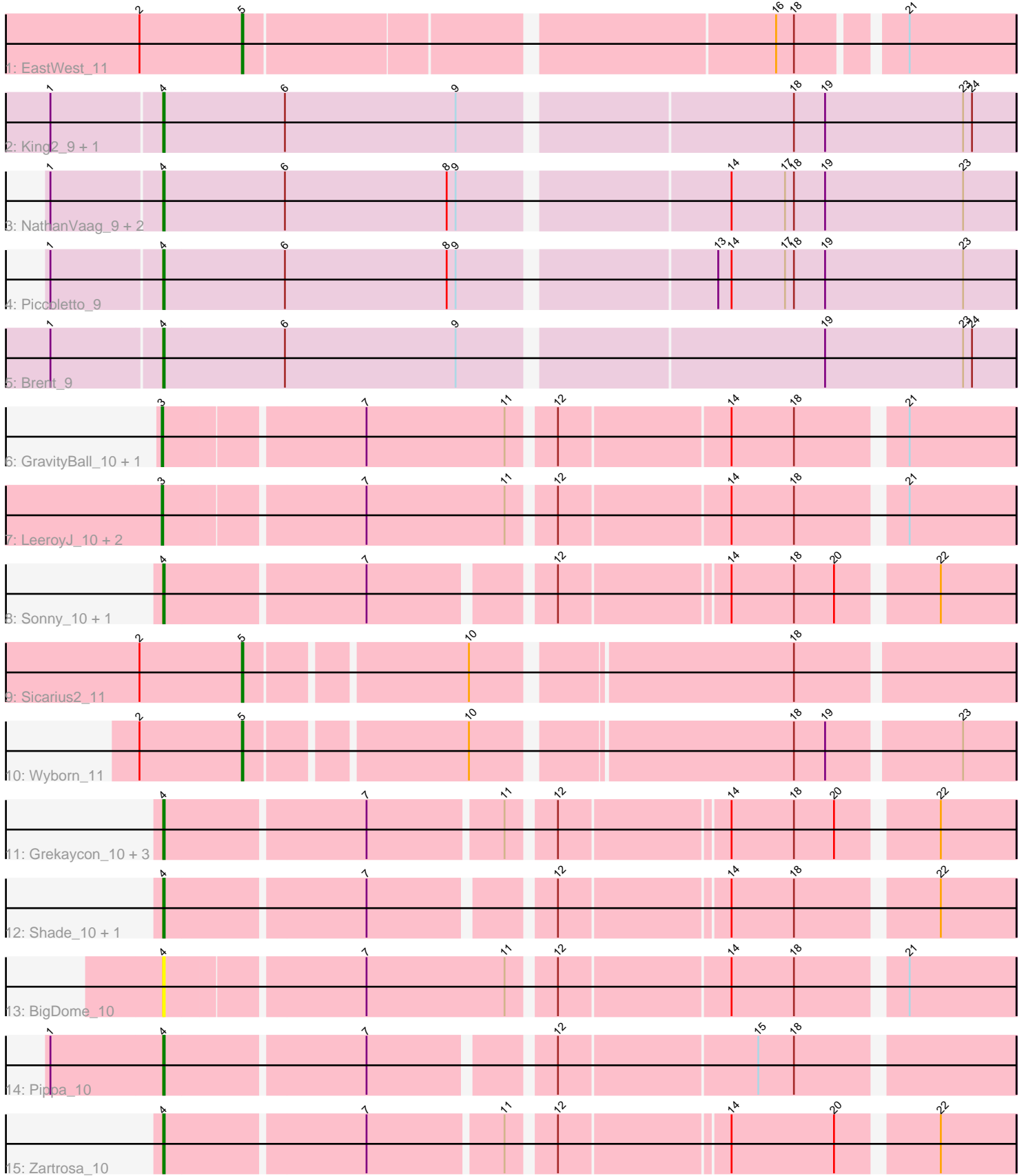


Pham 216477



Note: Tracks are now grouped by subcluster and scaled. Switching in subcluster is indicated by changes in track color. Track scale is now set by default to display the region 30 bp upstream of start 1 to 30 bp downstream of the last possible start. If this default region is judged to be packed too tightly with annotated starts, the track will be further scaled to only show that region of the ORF with annotated starts. This action will be indicated by adding "Zoomed" to the title. For starts, yellow indicates the location of called starts comprised solely of Glimmer/GeneMark auto-annotations, green indicates the location of called starts with at least 1 manual gene annotation.

Pham 216477 Report

This analysis was run 02/22/25 on database version 588.

Pham number 216477 has 26 members, 1 are drafts.

Phages represented in each track:

- Track 1 : EastWest_11
- Track 2 : King2_9, Franzy_9
- Track 3 : NathanVaag_9, Beans_9, Jawnski_9
- Track 4 : Piccoletto_9
- Track 5 : Brent_9
- Track 6 : GravityBall_10, StevieBAY_10
- Track 7 : LeeroyJ_10, Timinator_10, BarretLemon_10
- Track 8 : Sonny_10, Jordan_10
- Track 9 : Sicarius2_11
- Track 10 : Wyborn_11
- Track 11 : Grekaycon_10, BossLady_10, Martha_10, TaeYoung_10
- Track 12 : Shade_10, JKerns_10
- Track 13 : BigDome_10
- Track 14 : Pippa_10
- Track 15 : Zartrosa_10

Summary of Final Annotations (See graph section above for start numbers):

The start number called the most often in the published annotations is 4, it was called in 17 of the 25 non-draft genes in the pham.

Genes that call this "Most Annotated" start:

- Beans_9, BigDome_10, BossLady_10, Brent_9, Franzy_9, Grekaycon_10, JKerns_10, Jawnski_9, Jordan_10, King2_9, Martha_10, NathanVaag_9, Piccoletto_9, Pippa_10, Shade_10, Sonny_10, TaeYoung_10, Zartrosa_10,

Genes that have the "Most Annotated" start but do not call it:

-

Genes that do not have the "Most Annotated" start:

- BarretLemon_10, EastWest_11, GravityBall_10, LeeroyJ_10, Sicarius2_11, StevieBAY_10, Timinator_10, Wyborn_11,

Summary by start number:

Start 3:

- Found in 5 of 26 (19.2%) of genes in pham
- Manual Annotations of this start: 5 of 25
- Called 100.0% of time when present
- Phage (with cluster) where this start called: BarretLemon_10 (AO2), GravityBall_10 (AO2), LeeroyJ_10 (AO2), StevieBAY_10 (AO2), Timinator_10 (AO2),

Start 4:

- Found in 18 of 26 (69.2%) of genes in pham
- Manual Annotations of this start: 17 of 25
- Called 100.0% of time when present
- Phage (with cluster) where this start called: Beans_9 (AO1), BigDome_10 (AO2), BossLady_10 (AO2), Brent_9 (AO1), Franzy_9 (AO1), Grekaycon_10 (AO2), JKerns_10 (AO2), Jawnski_9 (AO1), Jordan_10 (AO2), King2_9 (AO1), Martha_10 (AO2), NathanVaag_9 (AO1), Piccoletto_9 (AO1), Pippa_10 (AO2), Shade_10 (AO2), Sonny_10 (AO2), TaeYoung_10 (AO2), Zartrosa_10 (AO2),

Start 5:

- Found in 3 of 26 (11.5%) of genes in pham
- Manual Annotations of this start: 3 of 25
- Called 100.0% of time when present
- Phage (with cluster) where this start called: EastWest_11 (AO), Sicarius2_11 (AO2), Wyborn_11 (AO2),

Summary by clusters:

There are 3 clusters represented in this pham: AO, AO2, AO1,

Info for manual annotations of cluster AO:

- Start number 5 was manually annotated 1 time for cluster AO.

Info for manual annotations of cluster AO1:

- Start number 4 was manually annotated 7 times for cluster AO1.

Info for manual annotations of cluster AO2:

- Start number 3 was manually annotated 5 times for cluster AO2.
- Start number 4 was manually annotated 10 times for cluster AO2.
- Start number 5 was manually annotated 2 times for cluster AO2.

Gene Information:

Gene: BarretLemon_10 Start: 8454, Stop: 8990, Start Num: 3

Candidate Starts for BarretLemon_10:

(Start: 3 @8454 has 5 MA's), (7, 8580), (11, 8673), (12, 8700), (14, 8811), (18, 8853), (21, 8919),

Gene: Beans_9 Start: 8116, Stop: 8685, Start Num: 4

Candidate Starts for Beans_9:

(1, 8044), (Start: 4 @8116 has 17 MA's), (6, 8197), (8, 8305), (9, 8311), (14, 8494), (17, 8530), (18, 8536), (19, 8557), (23, 8650),

Gene: BigDome_10 Start: 8442, Stop: 8978, Start Num: 4
Candidate Starts for BigDome_10:
(Start: 4 @8442 has 17 MA's), (7, 8568), (11, 8661), (12, 8688), (14, 8799), (18, 8841), (21, 8907),

Gene: BossLady_10 Start: 8462, Stop: 8992, Start Num: 4
Candidate Starts for BossLady_10:
(Start: 4 @8462 has 17 MA's), (7, 8591), (11, 8678), (12, 8705), (14, 8813), (18, 8855), (20, 8882), (22, 8942),

Gene: Brent_9 Start: 8114, Stop: 8671, Start Num: 4
Candidate Starts for Brent_9:
(1, 8042), (Start: 4 @8114 has 17 MA's), (6, 8195), (9, 8309), (19, 8543), (23, 8636), (24, 8642),

Gene: EastWest_11 Start: 8534, Stop: 9016, Start Num: 5
Candidate Starts for EastWest_11:
(2, 8465), (Start: 5 @8534 has 3 MA's), (16, 8870), (18, 8882), (21, 8945),

Gene: Franzy_9 Start: 8114, Stop: 8671, Start Num: 4
Candidate Starts for Franzy_9:
(1, 8042), (Start: 4 @8114 has 17 MA's), (6, 8195), (9, 8309), (18, 8522), (19, 8543), (23, 8636), (24, 8642),

Gene: GravityBall_10 Start: 8453, Stop: 8989, Start Num: 3
Candidate Starts for GravityBall_10:
(Start: 3 @8453 has 5 MA's), (7, 8579), (11, 8672), (12, 8699), (14, 8810), (18, 8852), (21, 8918),

Gene: Grekaycon_10 Start: 8471, Stop: 9001, Start Num: 4
Candidate Starts for Grekaycon_10:
(Start: 4 @8471 has 17 MA's), (7, 8600), (11, 8687), (12, 8714), (14, 8822), (18, 8864), (20, 8891), (22, 8951),

Gene: JKerns_10 Start: 8501, Stop: 9028, Start Num: 4
Candidate Starts for JKerns_10:
(Start: 4 @8501 has 17 MA's), (7, 8630), (12, 8741), (14, 8849), (18, 8891), (22, 8978),

Gene: Jawnski_9 Start: 8111, Stop: 8680, Start Num: 4
Candidate Starts for Jawnski_9:
(1, 8039), (Start: 4 @8111 has 17 MA's), (6, 8192), (8, 8300), (9, 8306), (14, 8489), (17, 8525), (18, 8531), (19, 8552), (23, 8645),

Gene: Jordan_10 Start: 8471, Stop: 8998, Start Num: 4
Candidate Starts for Jordan_10:
(Start: 4 @8471 has 17 MA's), (7, 8600), (12, 8711), (14, 8819), (18, 8861), (20, 8888), (22, 8948),

Gene: King2_9 Start: 8116, Stop: 8673, Start Num: 4
Candidate Starts for King2_9:
(1, 8044), (Start: 4 @8116 has 17 MA's), (6, 8197), (9, 8311), (18, 8524), (19, 8545), (23, 8638), (24, 8644),

Gene: LeeroyJ_10 Start: 8453, Stop: 8989, Start Num: 3
Candidate Starts for LeeroyJ_10:
(Start: 3 @8453 has 5 MA's), (7, 8579), (11, 8672), (12, 8699), (14, 8810), (18, 8852), (21, 8918),

Gene: Martha_10 Start: 8409, Stop: 8939, Start Num: 4

Candidate Starts for Martha_10:

(Start: 4 @8409 has 17 MA's), (7, 8538), (11, 8625), (12, 8652), (14, 8760), (18, 8802), (20, 8829), (22, 8889),

Gene: NathanVaag_9 Start: 8116, Stop: 8673, Start Num: 4

Candidate Starts for NathanVaag_9:

(1, 8044), (Start: 4 @8116 has 17 MA's), (6, 8197), (8, 8305), (9, 8311), (14, 8482), (17, 8518), (18, 8524), (19, 8545), (23, 8638),

Gene: Piccoletto_9 Start: 8117, Stop: 8674, Start Num: 4

Candidate Starts for Piccoletto_9:

(1, 8045), (Start: 4 @8117 has 17 MA's), (6, 8198), (8, 8306), (9, 8312), (13, 8474), (14, 8483), (17, 8519), (18, 8525), (19, 8546), (23, 8639),

Gene: Pippa_10 Start: 8506, Stop: 9036, Start Num: 4

Candidate Starts for Pippa_10:

(1, 8431), (Start: 4 @8506 has 17 MA's), (7, 8635), (12, 8746), (15, 8875), (18, 8899),

Gene: Shade_10 Start: 8450, Stop: 8977, Start Num: 4

Candidate Starts for Shade_10:

(Start: 4 @8450 has 17 MA's), (7, 8579), (12, 8690), (14, 8798), (18, 8840), (22, 8927),

Gene: Sicarius2_11 Start: 8997, Stop: 9476, Start Num: 5

Candidate Starts for Sicarius2_11:

(2, 8928), (Start: 5 @8997 has 3 MA's), (10, 9135), (18, 9336),

Gene: Sonny_10 Start: 8471, Stop: 8998, Start Num: 4

Candidate Starts for Sonny_10:

(Start: 4 @8471 has 17 MA's), (7, 8600), (12, 8711), (14, 8819), (18, 8861), (20, 8888), (22, 8948),

Gene: StevieBAY_10 Start: 8453, Stop: 8989, Start Num: 3

Candidate Starts for StevieBAY_10:

(Start: 3 @8453 has 5 MA's), (7, 8579), (11, 8672), (12, 8699), (14, 8810), (18, 8852), (21, 8918),

Gene: TaeYoung_10 Start: 8472, Stop: 9002, Start Num: 4

Candidate Starts for TaeYoung_10:

(Start: 4 @8472 has 17 MA's), (7, 8601), (11, 8688), (12, 8715), (14, 8823), (18, 8865), (20, 8892), (22, 8952),

Gene: Timinator_10 Start: 8453, Stop: 8989, Start Num: 3

Candidate Starts for Timinator_10:

(Start: 3 @8453 has 5 MA's), (7, 8579), (11, 8672), (12, 8699), (14, 8810), (18, 8852), (21, 8918),

Gene: Wyborn_11 Start: 8858, Stop: 9337, Start Num: 5

Candidate Starts for Wyborn_11:

(2, 8789), (Start: 5 @8858 has 3 MA's), (10, 8996), (18, 9197), (19, 9218), (23, 9302),

Gene: Zartrosa_10 Start: 8471, Stop: 9001, Start Num: 4

Candidate Starts for Zartrosa_10:

(Start: 4 @8471 has 17 MA's), (7, 8600), (11, 8687), (12, 8714), (14, 8822), (20, 8891), (22, 8951),