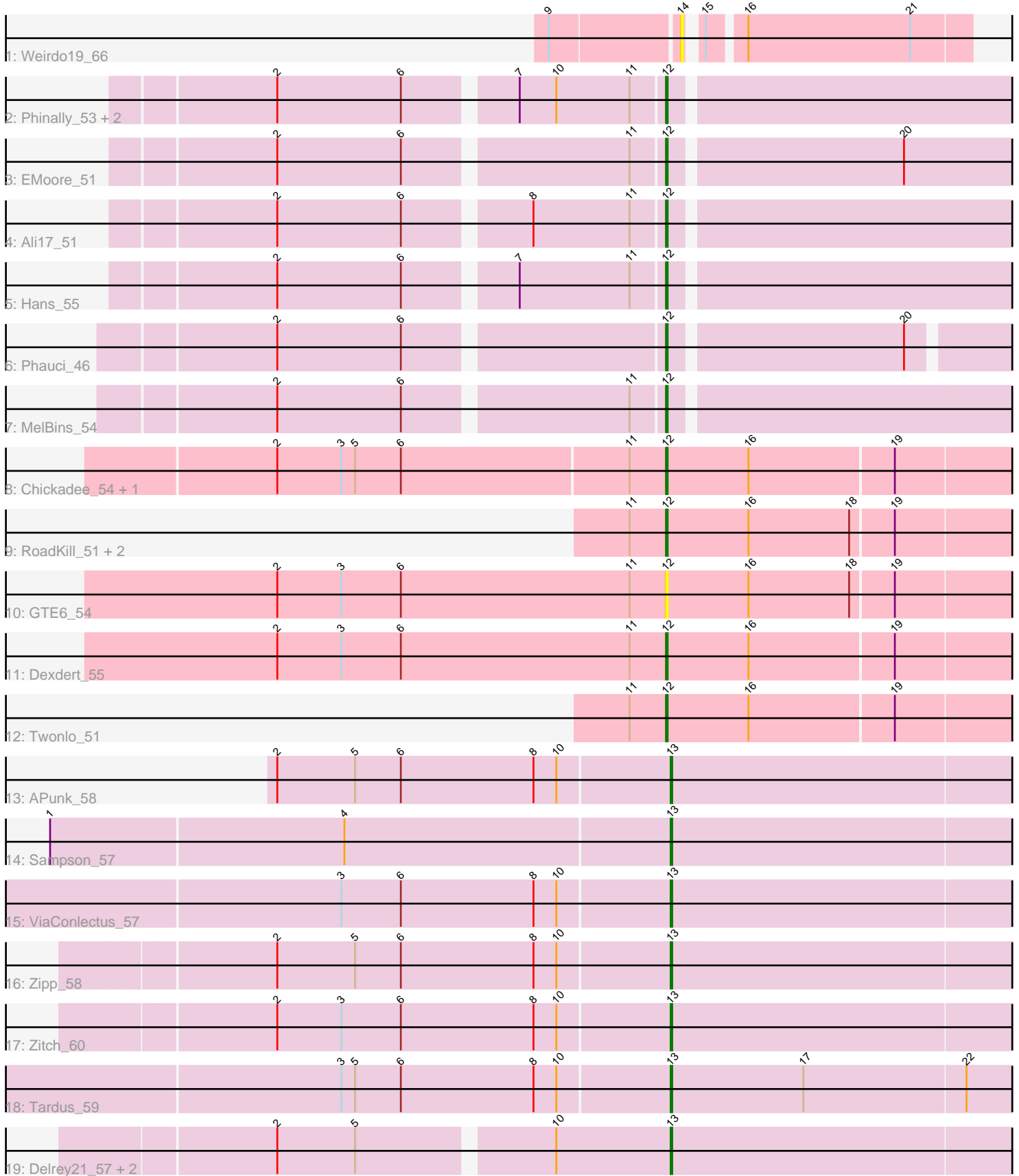


Pham 216478



Note: Tracks are now grouped by subcluster and scaled. Switching in subcluster is indicated by changes in track color. Track scale is now set by default to display the region 30 bp upstream of start 1 to 30 bp downstream of the last possible start. If this default region is judged to be packed too tightly with annotated starts, the track will be further scaled to only show that region of the ORF with annotated starts. This action will be indicated by adding "Zoomed" to the title. For starts, yellow indicates the location of called starts comprised solely of Glimmer/GeneMark auto-annotations, green indicates the location of called starts with at least 1 manual gene annotation.

Pham 216478 Report

This analysis was run 02/22/25 on database version 588.

Pham number 216478 has 26 members, 2 are drafts.

Phages represented in each track:

- Track 1 : Weirido19_66
- Track 2 : Phinally_53, Leonard_53, Inspectinfecti_54
- Track 3 : EMOore_51
- Track 4 : Ali17_51
- Track 5 : Hans_55
- Track 6 : Phauci_46
- Track 7 : MelBins_54
- Track 8 : Chickadee_54, Kwekel_54
- Track 9 : RoadKill_51, EdmundFerry_52, Tiamoceli_54
- Track 10 : GTE6_54
- Track 11 : Dextert_55
- Track 12 : Twonlo_51
- Track 13 : APunk_58
- Track 14 : Sampson_57
- Track 15 : ViaConlectus_57
- Track 16 : Zipp_58
- Track 17 : Zitch_60
- Track 18 : Tardus_59
- Track 19 : Delrey21_57, DoctorFroggo_57, Verity_57

Summary of Final Annotations (See graph section above for start numbers):

The start number called the most often in the published annotations is 12, it was called in 15 of the 24 non-draft genes in the pham.

Genes that call this "Most Annotated" start:

- Ali17_51, Chickadee_54, Dextert_55, EMOore_51, EdmundFerry_52, GTE6_54, Hans_55, Inspectinfecti_54, Kwekel_54, Leonard_53, MelBins_54, Phauci_46, Phinally_53, RoadKill_51, Tiamoceli_54, Twonlo_51,

Genes that have the "Most Annotated" start but do not call it:

-

Genes that do not have the "Most Annotated" start:

- APunk_58, Delrey21_57, DoctorFroggo_57, Sampson_57, Tardus_59, Verity_57, ViaConlectus_57, Weirido19_66, Zipp_58, Zitch_60,

Summary by start number:

Start 12:

- Found in 16 of 26 (61.5%) of genes in pham
- Manual Annotations of this start: 15 of 24
- Called 100.0% of time when present
- Phage (with cluster) where this start called: Ali17_51 (DE2), Chickadee_54 (DE3), Dextert_55 (DE3), EMoore_51 (DE2), EdmundFerry_52 (DE3), GTE6_54 (DE3), Hans_55 (DE2), Inspectinfecti_54 (DE2), Kwekel_54 (DE3), Leonard_53 (DE2), MelBins_54 (DE2), Phauci_46 (DE2), Phinally_53 (DE2), RoadKill_51 (DE3), Tiamoceli_54 (DE3), Twonlo_51 (DE3),

Start 13:

- Found in 9 of 26 (34.6%) of genes in pham
- Manual Annotations of this start: 9 of 24
- Called 100.0% of time when present
- Phage (with cluster) where this start called: APunk_58 (DE4), Delrey21_57 (DE4), DoctorFroggo_57 (DE4), Sampson_57 (DE4), Tardus_59 (DE4), Verity_57 (DE4), ViaConlectus_57 (DE4), Zipp_58 (DE4), Zitch_60 (DE4),

Start 14:

- Found in 1 of 26 (3.8%) of genes in pham
- No Manual Annotations of this start.
- Called 100.0% of time when present
- Phage (with cluster) where this start called: Weirido19_66 (AH),

Summary by clusters:

There are 4 clusters represented in this pham: AH, DE2, DE3, DE4,

Info for manual annotations of cluster DE2:

- Start number 12 was manually annotated 8 times for cluster DE2.

Info for manual annotations of cluster DE3:

- Start number 12 was manually annotated 7 times for cluster DE3.

Info for manual annotations of cluster DE4:

- Start number 13 was manually annotated 9 times for cluster DE4.

Gene Information:

Gene: APunk_58 Start: 46202, Stop: 46435, Start Num: 13

Candidate Starts for APunk_58:

(2, 45950), (5, 46001), (6, 46031), (8, 46118), (10, 46133), (Start: 13 @46202 has 9 MA's),

Gene: Ali17_51 Start: 44072, Stop: 44317, Start Num: 12

Candidate Starts for Ali17_51:

(2, 43832), (6, 43913), (8, 43988), (11, 44051), (Start: 12 @44072 has 15 MA's),

Gene: Chickadee_54 Start: 42618, Stop: 42839, Start Num: 12

Candidate Starts for Chickadee_54:

(2, 42366), (3, 42408), (5, 42417), (6, 42447), (11, 42594), (Start: 12 @42618 has 15 MA's), (16, 42672), (19, 42765),

Gene: Delrey21_57 Start: 47419, Stop: 47652, Start Num: 13

Candidate Starts for Delrey21_57:

(2, 47176), (5, 47227), (10, 47347), (Start: 13 @47419 has 9 MA's),

Gene: Dextert_55 Start: 42922, Stop: 43143, Start Num: 12

Candidate Starts for Dextert_55:

(2, 42667), (3, 42709), (6, 42748), (11, 42898), (Start: 12 @42922 has 15 MA's), (16, 42976), (19, 43069),

Gene: DoctorFroggo_57 Start: 47419, Stop: 47652, Start Num: 13

Candidate Starts for DoctorFroggo_57:

(2, 47176), (5, 47227), (10, 47347), (Start: 13 @47419 has 9 MA's),

Gene: EMoore_51 Start: 45247, Stop: 45498, Start Num: 12

Candidate Starts for EMoore_51:

(2, 45007), (6, 45088), (11, 45226), (Start: 12 @45247 has 15 MA's), (20, 45394),

Gene: EdmundFerry_52 Start: 42582, Stop: 42803, Start Num: 12

Candidate Starts for EdmundFerry_52:

(11, 42558), (Start: 12 @42582 has 15 MA's), (16, 42636), (18, 42702), (19, 42729),

Gene: GTE6_54 Start: 43173, Stop: 43394, Start Num: 12

Candidate Starts for GTE6_54:

(2, 42918), (3, 42960), (6, 42999), (11, 43149), (Start: 12 @43173 has 15 MA's), (16, 43227), (18, 43293), (19, 43320),

Gene: Hans_55 Start: 44712, Stop: 44963, Start Num: 12

Candidate Starts for Hans_55:

(2, 44472), (6, 44553), (7, 44619), (11, 44691), (Start: 12 @44712 has 15 MA's),

Gene: Inspectinfecti_54 Start: 45158, Stop: 45403, Start Num: 12

Candidate Starts for Inspectinfecti_54:

(2, 44918), (6, 44999), (7, 45065), (10, 45089), (11, 45137), (Start: 12 @45158 has 15 MA's),

Gene: Kwekel_54 Start: 42531, Stop: 42752, Start Num: 12

Candidate Starts for Kwekel_54:

(2, 42279), (3, 42321), (5, 42330), (6, 42360), (11, 42507), (Start: 12 @42531 has 15 MA's), (16, 42585), (19, 42678),

Gene: Leonard_53 Start: 44797, Stop: 45048, Start Num: 12

Candidate Starts for Leonard_53:

(2, 44557), (6, 44638), (7, 44704), (10, 44728), (11, 44776), (Start: 12 @44797 has 15 MA's),

Gene: MelBins_54 Start: 45052, Stop: 45297, Start Num: 12

Candidate Starts for MelBins_54:

(2, 44812), (6, 44893), (11, 45031), (Start: 12 @45052 has 15 MA's),

Gene: Phauci_46 Start: 41715, Stop: 41951, Start Num: 12
Candidate Starts for Phauci_46:
(2, 41475), (6, 41556), (Start: 12 @41715 has 15 MA's), (20, 41862),

Gene: Phinally_53 Start: 44794, Stop: 45045, Start Num: 12
Candidate Starts for Phinally_53:
(2, 44554), (6, 44635), (7, 44701), (10, 44725), (11, 44773), (Start: 12 @44794 has 15 MA's),

Gene: RoadKill_51 Start: 42080, Stop: 42301, Start Num: 12
Candidate Starts for RoadKill_51:
(11, 42056), (Start: 12 @42080 has 15 MA's), (16, 42134), (18, 42200), (19, 42227),

Gene: Sampson_57 Start: 46635, Stop: 46868, Start Num: 13
Candidate Starts for Sampson_57:
(1, 46236), (4, 46425), (Start: 13 @46635 has 9 MA's),

Gene: Tardus_59 Start: 46390, Stop: 46623, Start Num: 13
Candidate Starts for Tardus_59:
(3, 46180), (5, 46189), (6, 46219), (8, 46306), (10, 46321), (Start: 13 @46390 has 9 MA's), (17, 46474),
(22, 46579),

Gene: Tiamoceli_54 Start: 43371, Stop: 43592, Start Num: 12
Candidate Starts for Tiamoceli_54:
(11, 43347), (Start: 12 @43371 has 15 MA's), (16, 43425), (18, 43491), (19, 43518),

Gene: Twonlo_51 Start: 42001, Stop: 42222, Start Num: 12
Candidate Starts for Twonlo_51:
(11, 41977), (Start: 12 @42001 has 15 MA's), (16, 42055), (19, 42148),

Gene: Verity_57 Start: 47419, Stop: 47652, Start Num: 13
Candidate Starts for Verity_57:
(2, 47176), (5, 47227), (10, 47347), (Start: 13 @47419 has 9 MA's),

Gene: ViaConlectus_57 Start: 45345, Stop: 45578, Start Num: 13
Candidate Starts for ViaConlectus_57:
(3, 45132), (6, 45171), (8, 45258), (10, 45273), (Start: 13 @45345 has 9 MA's),

Gene: Weirido19_66 Start: 43443, Stop: 43613, Start Num: 14
Candidate Starts for Weirido19_66:
(9, 43362), (14, 43443), (15, 43449), (16, 43470), (21, 43575),

Gene: Zipp_58 Start: 47343, Stop: 47576, Start Num: 13
Candidate Starts for Zipp_58:
(2, 47091), (5, 47142), (6, 47172), (8, 47259), (10, 47274), (Start: 13 @47343 has 9 MA's),

Gene: Zitch_60 Start: 45466, Stop: 45699, Start Num: 13
Candidate Starts for Zitch_60:
(2, 45214), (3, 45256), (6, 45295), (8, 45382), (10, 45397), (Start: 13 @45466 has 9 MA's),