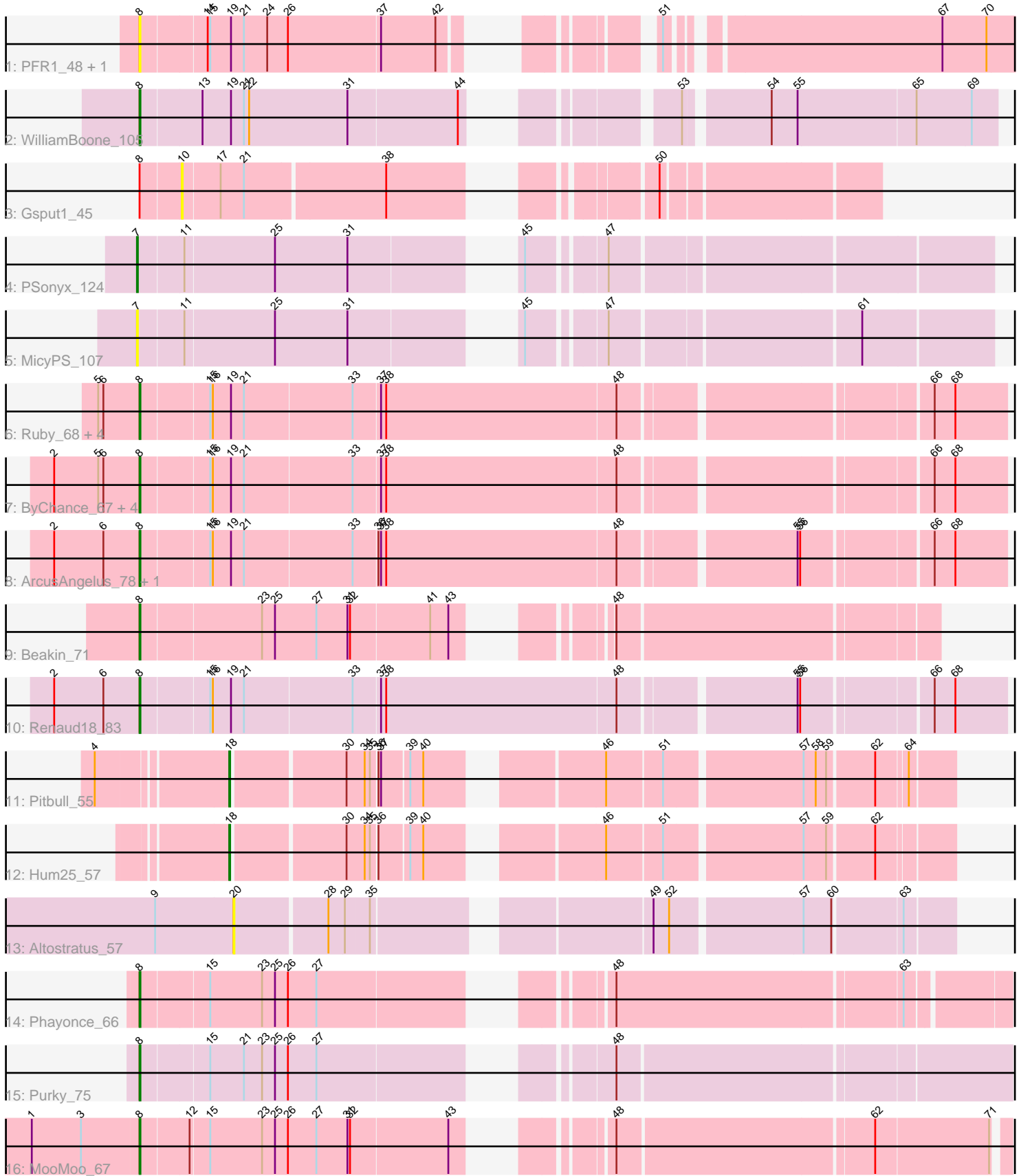


Pham 216480



Note: Tracks are now grouped by subcluster and scaled. Switching in subcluster is indicated by changes in track color. Track scale is now set by default to display the region 30 bp upstream of start 1 to 30 bp downstream of the last possible start. If this default region is judged to be packed too tightly with annotated starts, the track will be further scaled to only show that region of the ORF with annotated starts. This action will be indicated by adding "Zoomed" to the title. For starts, yellow indicates the location of called starts comprised solely of Glimmer/GeneMark auto-annotations, green indicates the location of called starts with at least 1 manual gene annotation.

Pham 216480 Report

This analysis was run 02/22/25 on database version 588.

Pham number 216480 has 26 members, 5 are drafts.

Phages represented in each track:

- Track 1 : PFR1_48, PFR2_50
- Track 2 : WilliamBoone_105
- Track 3 : Gsput1_45
- Track 4 : PSonyx_124
- Track 5 : MicyPS_107
- Track 6 : Ruby_68, MisterCuddles_70, Girr_70, Stap_68, Krakatau_68
- Track 7 : ByChance_67, Mova_73, ShowerHandel_77, Alexphander_75, Madiba_77
- Track 8 : ArcusAngelus_78, Chevrolet_80
- Track 9 : Beakin_71
- Track 10 : Renaud18_83
- Track 11 : Pitbull_55
- Track 12 : Hum25_57
- Track 13 : Altostratus_57
- Track 14 : Phayonce_66
- Track 15 : Purky_75
- Track 16 : MooMoo_67

Summary of Final Annotations (See graph section above for start numbers):

The start number called the most often in the published annotations is 8, it was called in 18 of the 21 non-draft genes in the pham.

Genes that call this "Most Annotated" start:

- Alexphander_75, ArcusAngelus_78, Beakin_71, ByChance_67, Chevrolet_80, Girr_70, Krakatau_68, Madiba_77, MisterCuddles_70, MooMoo_67, Mova_73, PFR1_48, PFR2_50, Phayonce_66, Purky_75, Renaud18_83, Ruby_68, ShowerHandel_77, Stap_68, WilliamBoone_105,

Genes that have the "Most Annotated" start but do not call it:

- Gsput1_45,

Genes that do not have the "Most Annotated" start:

- Altostratus_57, Hum25_57, MicyPS_107, PSonyx_124, Pitbull_55,

Summary by start number:

Start 7:

- Found in 2 of 26 (7.7%) of genes in pham
- Manual Annotations of this start: 1 of 21
- Called 100.0% of time when present
- Phage (with cluster) where this start called: MicyPS_107 (EQ), PSonyx_124 (EQ),

Start 8:

- Found in 21 of 26 (80.8%) of genes in pham
- Manual Annotations of this start: 18 of 21
- Called 95.2% of time when present
- Phage (with cluster) where this start called: Alexphander_75 (F1), ArcusAngelus_78 (F1), Beakin_71 (F1), ByChance_67 (F1), Chevrolet_80 (F1), Girr_70 (F1), Krakatau_68 (F1), Madiba_77 (F1), MisterCuddles_70 (F1), MooMoo_67 (singleton), Mova_73 (F1), PFR1_48 (BX), PFR2_50 (BX), Phayonce_66 (P5), Purky_75 (P6), Renaud18_83 (F4), Ruby_68 (F1), ShowerHandel_77 (F1), Stap_68 (F1), WilliamBoone_105 (CQ1),

Start 10:

- Found in 1 of 26 (3.8%) of genes in pham
- No Manual Annotations of this start.
- Called 100.0% of time when present
- Phage (with cluster) where this start called: Gspu1_45 (CU2),

Start 18:

- Found in 2 of 26 (7.7%) of genes in pham
- Manual Annotations of this start: 2 of 21
- Called 100.0% of time when present
- Phage (with cluster) where this start called: Hum25_57 (FQ), Pitbull_55 (FQ),

Start 20:

- Found in 1 of 26 (3.8%) of genes in pham
- No Manual Annotations of this start.
- Called 100.0% of time when present
- Phage (with cluster) where this start called: Altostratus_57 (FS),

Summary by clusters:

There are 11 clusters represented in this pham: F1, singleton, FS, F4, CU2, FQ, BX, P5, P6, CQ1, EQ,

Info for manual annotations of cluster CQ1:

- Start number 8 was manually annotated 1 time for cluster CQ1.

Info for manual annotations of cluster EQ:

- Start number 7 was manually annotated 1 time for cluster EQ.

Info for manual annotations of cluster F1:

- Start number 8 was manually annotated 13 times for cluster F1.

Info for manual annotations of cluster F4:

- Start number 8 was manually annotated 1 time for cluster F4.

Info for manual annotations of cluster FQ:

- Start number 18 was manually annotated 2 times for cluster FQ.

Info for manual annotations of cluster P5:

- Start number 8 was manually annotated 1 time for cluster P5.

Info for manual annotations of cluster P6:

- Start number 8 was manually annotated 1 time for cluster P6.

Gene Information:

Gene: Alexphander_75 Start: 46658, Stop: 47605, Start Num: 8

Candidate Starts for Alexphander_75:

(2, 46559), (5, 46610), (6, 46616), (Start: 8 @46658 has 18 MA's), (15, 46733), (16, 46736), (19, 46757), (21, 46772), (33, 46895), (37, 46925), (38, 46931), (48, 47195), (66, 47522), (68, 47546),

Gene: Altostratus_57 Start: 33551, Stop: 34300, Start Num: 20

Candidate Starts for Altostratus_57:

(9, 33461), (20, 33551), (28, 33653), (29, 33671), (35, 33698), (49, 33977), (52, 33995), (57, 34139), (60, 34169), (63, 34244),

Gene: ArcusAngelus_78 Start: 47565, Stop: 48512, Start Num: 8

Candidate Starts for ArcusAngelus_78:

(2, 47466), (6, 47523), (Start: 8 @47565 has 18 MA's), (15, 47640), (16, 47643), (19, 47664), (21, 47679), (33, 47802), (36, 47829), (37, 47832), (38, 47838), (48, 48102), (55, 48291), (56, 48294), (66, 48429), (68, 48453),

Gene: Beakin_71 Start: 42319, Stop: 43122, Start Num: 8

Candidate Starts for Beakin_71:

(Start: 8 @42319 has 18 MA's), (23, 42454), (25, 42469), (27, 42517), (31, 42553), (32, 42556), (41, 42646), (43, 42667), (48, 42772),

Gene: ByChance_67 Start: 42797, Stop: 43744, Start Num: 8

Candidate Starts for ByChance_67:

(2, 42698), (5, 42749), (6, 42755), (Start: 8 @42797 has 18 MA's), (15, 42872), (16, 42875), (19, 42896), (21, 42911), (33, 43034), (37, 43064), (38, 43070), (48, 43334), (66, 43661), (68, 43685),

Gene: Chevrolet_80 Start: 47566, Stop: 48513, Start Num: 8

Candidate Starts for Chevrolet_80:

(2, 47467), (6, 47524), (Start: 8 @47566 has 18 MA's), (15, 47641), (16, 47644), (19, 47665), (21, 47680), (33, 47803), (36, 47830), (37, 47833), (38, 47839), (48, 48103), (55, 48292), (56, 48295), (66, 48430), (68, 48454),

Gene: Girr_70 Start: 46136, Stop: 47083, Start Num: 8

Candidate Starts for Girr_70:

(5, 46088), (6, 46094), (Start: 8 @46136 has 18 MA's), (15, 46211), (16, 46214), (19, 46235), (21, 46250), (33, 46373), (37, 46403), (38, 46409), (48, 46673), (66, 47000), (68, 47024),

Gene: Gspu1_45 Start: 32516, Stop: 33187, Start Num: 10

Candidate Starts for Gspu1_45:

(Start: 8 @32471 has 18 MA's), (10, 32516), (17, 32558), (21, 32585), (38, 32741), (50, 32957),

Gene: Hum25_57 Start: 32602, Stop: 33336, Start Num: 18

Candidate Starts for Hum25_57:

(Start: 18 @32602 has 2 MA's), (30, 32725), (34, 32746), (35, 32752), (36, 32758), (39, 32791), (40, 32806), (46, 32968), (51, 33028), (57, 33178), (59, 33202), (62, 33253),

Gene: Krakatau_68 Start: 42516, Stop: 43463, Start Num: 8

Candidate Starts for Krakatau_68:

(5, 42468), (6, 42474), (Start: 8 @42516 has 18 MA's), (15, 42591), (16, 42594), (19, 42615), (21, 42630), (33, 42753), (37, 42783), (38, 42789), (48, 43053), (66, 43380), (68, 43404),

Gene: Madiba_77 Start: 47713, Stop: 48660, Start Num: 8

Candidate Starts for Madiba_77:

(2, 47614), (5, 47665), (6, 47671), (Start: 8 @47713 has 18 MA's), (15, 47788), (16, 47791), (19, 47812), (21, 47827), (33, 47950), (37, 47980), (38, 47986), (48, 48250), (66, 48577), (68, 48601),

Gene: MicyPS_107 Start: 61596, Stop: 62462, Start Num: 7

Candidate Starts for MicyPS_107:

(Start: 7 @61596 has 1 MA's), (11, 61647), (25, 61749), (31, 61833), (45, 61971), (47, 62049), (61, 62316),

Gene: MisterCuddles_70 Start: 46136, Stop: 47083, Start Num: 8

Candidate Starts for MisterCuddles_70:

(5, 46088), (6, 46094), (Start: 8 @46136 has 18 MA's), (15, 46211), (16, 46214), (19, 46235), (21, 46250), (33, 46373), (37, 46403), (38, 46409), (48, 46673), (66, 47000), (68, 47024),

Gene: MooMoo_67 Start: 43945, Stop: 44826, Start Num: 8

Candidate Starts for MooMoo_67:

(1, 43822), (3, 43879), (Start: 8 @43945 has 18 MA's), (12, 43999), (15, 44020), (23, 44080), (25, 44095), (26, 44110), (27, 44143), (31, 44179), (32, 44182), (43, 44293), (48, 44401), (62, 44683), (71, 44812),

Gene: Mova_73 Start: 45137, Stop: 46084, Start Num: 8

Candidate Starts for Mova_73:

(2, 45038), (5, 45089), (6, 45095), (Start: 8 @45137 has 18 MA's), (15, 45212), (16, 45215), (19, 45236), (21, 45251), (33, 45374), (37, 45404), (38, 45410), (48, 45674), (66, 46001), (68, 46025),

Gene: PFR1_48 Start: 33401, Stop: 34246, Start Num: 8

Candidate Starts for PFR1_48:

(Start: 8 @33401 has 18 MA's), (14, 33473), (15, 33476), (19, 33500), (21, 33515), (24, 33542), (26, 33566), (37, 33671), (42, 33734), (51, 33878), (67, 34160), (70, 34211),

Gene: PFR2_50 Start: 34970, Stop: 35815, Start Num: 8

Candidate Starts for PFR2_50:

(Start: 8 @34970 has 18 MA's), (14, 35042), (15, 35045), (19, 35069), (21, 35084), (24, 35111), (26, 35135), (37, 35240), (42, 35303), (51, 35447), (67, 35729), (70, 35780),

Gene: PSonyx_124 Start: 65104, Stop: 65970, Start Num: 7

Candidate Starts for PSonyx_124:

(Start: 7 @65104 has 1 MA's), (11, 65155), (25, 65257), (31, 65341), (45, 65479), (47, 65557),

Gene: Phayonce_66 Start: 43928, Stop: 44809, Start Num: 8

Candidate Starts for Phayonce_66:

(Start: 8 @43928 has 18 MA's), (15, 44003), (23, 44063), (25, 44078), (26, 44093), (27, 44126), (48, 44384), (63, 44702),

Gene: Pitbull_55 Start: 31198, Stop: 31932, Start Num: 18

Candidate Starts for Pitbull_55:

(4, 31060), (Start: 18 @31198 has 2 MA's), (30, 31321), (34, 31342), (35, 31348), (36, 31354), (37, 31357), (39, 31387), (40, 31402), (46, 31564), (51, 31624), (57, 31774), (58, 31786), (59, 31798), (62, 31849), (64, 31882),

Gene: Purky_75 Start: 45874, Stop: 46767, Start Num: 8

Candidate Starts for Purky_75:

(Start: 8 @45874 has 18 MA's), (15, 45949), (21, 45988), (23, 46009), (25, 46024), (26, 46039), (27, 46072), (48, 46336),

Gene: Renaud18_83 Start: 47137, Stop: 48084, Start Num: 8

Candidate Starts for Renaud18_83:

(2, 47038), (6, 47095), (Start: 8 @47137 has 18 MA's), (15, 47212), (16, 47215), (19, 47236), (21, 47251), (33, 47374), (37, 47404), (38, 47410), (48, 47674), (55, 47863), (56, 47866), (66, 48001), (68, 48025),

Gene: Ruby_68 Start: 46137, Stop: 47084, Start Num: 8

Candidate Starts for Ruby_68:

(5, 46089), (6, 46095), (Start: 8 @46137 has 18 MA's), (15, 46212), (16, 46215), (19, 46236), (21, 46251), (33, 46374), (37, 46404), (38, 46410), (48, 46674), (66, 47001), (68, 47025),

Gene: ShowerHandel_77 Start: 46737, Stop: 47684, Start Num: 8

Candidate Starts for ShowerHandel_77:

(2, 46638), (5, 46689), (6, 46695), (Start: 8 @46737 has 18 MA's), (15, 46812), (16, 46815), (19, 46836), (21, 46851), (33, 46974), (37, 47004), (38, 47010), (48, 47274), (66, 47601), (68, 47625),

Gene: Stap_68 Start: 43382, Stop: 44329, Start Num: 8

Candidate Starts for Stap_68:

(5, 43334), (6, 43340), (Start: 8 @43382 has 18 MA's), (15, 43457), (16, 43460), (19, 43481), (21, 43496), (33, 43619), (37, 43649), (38, 43655), (48, 43919), (66, 44246), (68, 44270),

Gene: WilliamBoone_105 Start: 60775, Stop: 61641, Start Num: 8

Candidate Starts for WilliamBoone_105:

(Start: 8 @60775 has 18 MA's), (13, 60844), (19, 60877), (21, 60892), (22, 60898), (31, 61012), (44, 61135), (53, 61300), (54, 61387), (55, 61417), (65, 61549), (69, 61612),