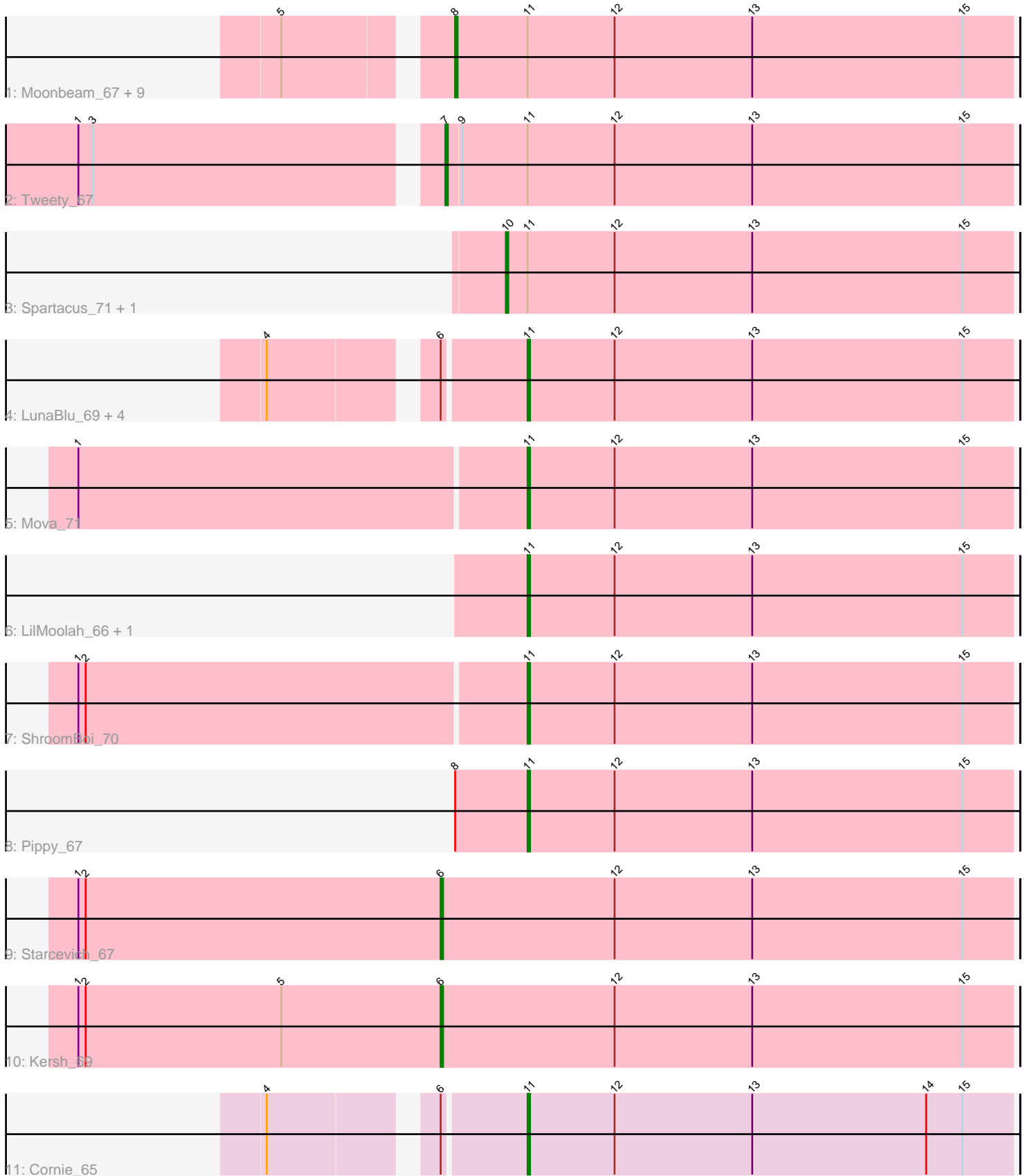


Pham 216481



Note: Tracks are now grouped by subcluster and scaled. Switching in subcluster is indicated by changes in track color. Track scale is now set by default to display the region 30 bp upstream of start 1 to 30 bp downstream of the last possible start. If this default region is judged to be packed too tightly with annotated starts, the track will be further scaled to only show that region of the ORF with annotated starts. This action will be indicated by adding "Zoomed" to the title. For starts, yellow indicates the location of called starts comprised solely of Glimmer/GeneMark auto-annotations, green indicates the location of called starts with at least 1 manual gene annotation.

Pham 216481 Report

This analysis was run 02/22/25 on database version 588.

Pham number 216481 has 26 members, 1 are drafts.

Phages represented in each track:

- Track 1 : Moonbeam_67, Emma_70, ByChance_61, Crumble_63, Fancypants_71, ShowerHandel_71, Zizzle_72, BobaPhett_72, Burwell21_66, Whouxphf_65
- Track 2 : Tweety_67
- Track 3 : Spartacus_71, Violac_69
- Track 4 : LunaBlu_69, Galactic_66, Zerg_67, Eish_70, XFactor_65
- Track 5 : Mova_71
- Track 6 : LilMoolah_66, Nivrat_64
- Track 7 : ShroomBoi_70
- Track 8 : Pippy_67
- Track 9 : Starcevich_67
- Track 10 : Kersh_69
- Track 11 : Cornie_65

Summary of Final Annotations (See graph section above for start numbers):

The start number called the most often in the published annotations is 11, it was called in 11 of the 25 non-draft genes in the pham.

Genes that call this "Most Annotated" start:

- Cornie_65, Eish_70, Galactic_66, LilMoolah_66, LunaBlu_69, Mova_71, Nivrat_64, Pippy_67, ShroomBoi_70, XFactor_65, Zerg_67,

Genes that have the "Most Annotated" start but do not call it:

- BobaPhett_72, Burwell21_66, ByChance_61, Crumble_63, Emma_70, Fancypants_71, Moonbeam_67, ShowerHandel_71, Spartacus_71, Tweety_67, Violac_69, Whouxphf_65, Zizzle_72,

Genes that do not have the "Most Annotated" start:

- Kersh_69, Starcevich_67,

Summary by start number:

Start 6:

- Found in 8 of 26 (30.8%) of genes in pham

- Manual Annotations of this start: 2 of 25
- Called 25.0% of time when present
- Phage (with cluster) where this start called: Kersh_69 (F1), Starcevich_67 (F1),

Start 7:

- Found in 1 of 26 (3.8%) of genes in pham
- Manual Annotations of this start: 1 of 25
- Called 100.0% of time when present
- Phage (with cluster) where this start called: Tweety_67 (F1),

Start 8:

- Found in 11 of 26 (42.3%) of genes in pham
- Manual Annotations of this start: 10 of 25
- Called 90.9% of time when present
- Phage (with cluster) where this start called: BobaPhett_72 (F1), Burwell21_66 (F1), ByChance_61 (F1), Crumble_63 (F1), Emma_70 (F1), Fancypants_71 (F1), Moonbeam_67 (F1), ShowerHandel_71 (F1), Whouxphf_65 (F1), Zizzle_72 (F1),

Start 10:

- Found in 2 of 26 (7.7%) of genes in pham
- Manual Annotations of this start: 1 of 25
- Called 100.0% of time when present
- Phage (with cluster) where this start called: Spartacus_71 (F1), Violac_69 (F1),

Start 11:

- Found in 24 of 26 (92.3%) of genes in pham
- Manual Annotations of this start: 11 of 25
- Called 45.8% of time when present
- Phage (with cluster) where this start called: Cornie_65 (F5), Eish_70 (F1), Galactic_66 (F1), LilMoolah_66 (F1), LunaBlu_69 (F1), Mova_71 (F1), Nivrat_64 (F1), Pippy_67 (F1), ShroomBoi_70 (F1), XFactor_65 (F1), Zerg_67 (F1),

Summary by clusters:

There are 2 clusters represented in this pham: F1, F5,

Info for manual annotations of cluster F1:

- Start number 6 was manually annotated 2 times for cluster F1.
- Start number 7 was manually annotated 1 time for cluster F1.
- Start number 8 was manually annotated 10 times for cluster F1.
- Start number 10 was manually annotated 1 time for cluster F1.
- Start number 11 was manually annotated 10 times for cluster F1.

Info for manual annotations of cluster F5:

- Start number 11 was manually annotated 1 time for cluster F5.

Gene Information:

Gene: BobaPhett_72 Start: 47714, Stop: 47944, Start Num: 8

Candidate Starts for BobaPhett_72:

(5, 47654), (Start: 8 @47714 has 10 MA's), (Start: 11 @47744 has 11 MA's), (12, 47780), (13, 47837), (15, 47924),

Gene: Burwell21_66 Start: 45036, Stop: 45266, Start Num: 8

Candidate Starts for Burwell21_66:

(5, 44976), (Start: 8 @45036 has 10 MA's), (Start: 11 @45066 has 11 MA's), (12, 45102), (13, 45159), (15, 45246),

Gene: ByChance_61 Start: 41056, Stop: 41289, Start Num: 8

Candidate Starts for ByChance_61:

(5, 40996), (Start: 8 @41056 has 10 MA's), (Start: 11 @41086 has 11 MA's), (12, 41122), (13, 41179), (15, 41266),

Gene: Cornie_65 Start: 43837, Stop: 44037, Start Num: 11

Candidate Starts for Cornie_65:

(4, 43744), (Start: 6 @43804 has 2 MA's), (Start: 11 @43837 has 11 MA's), (12, 43873), (13, 43930), (14, 44002), (15, 44017),

Gene: Crumble_63 Start: 41011, Stop: 41244, Start Num: 8

Candidate Starts for Crumble_63:

(5, 40951), (Start: 8 @41011 has 10 MA's), (Start: 11 @41041 has 11 MA's), (12, 41077), (13, 41134), (15, 41221),

Gene: Eish_70 Start: 45432, Stop: 45632, Start Num: 11

Candidate Starts for Eish_70:

(4, 45339), (Start: 6 @45399 has 2 MA's), (Start: 11 @45432 has 11 MA's), (12, 45468), (13, 45525), (15, 45612),

Gene: Emma_70 Start: 44637, Stop: 44867, Start Num: 8

Candidate Starts for Emma_70:

(5, 44577), (Start: 8 @44637 has 10 MA's), (Start: 11 @44667 has 11 MA's), (12, 44703), (13, 44760), (15, 44847),

Gene: Fancypants_71 Start: 45649, Stop: 45879, Start Num: 8

Candidate Starts for Fancypants_71:

(5, 45589), (Start: 8 @45649 has 10 MA's), (Start: 11 @45679 has 11 MA's), (12, 45715), (13, 45772), (15, 45859),

Gene: Galactic_66 Start: 44728, Stop: 44928, Start Num: 11

Candidate Starts for Galactic_66:

(4, 44635), (Start: 6 @44695 has 2 MA's), (Start: 11 @44728 has 11 MA's), (12, 44764), (13, 44821), (15, 44908),

Gene: Kersh_69 Start: 47054, Stop: 47290, Start Num: 6

Candidate Starts for Kersh_69:

(1, 46904), (2, 46907), (5, 46988), (Start: 6 @47054 has 2 MA's), (12, 47126), (13, 47183), (15, 47270),

Gene: LilMoolah_66 Start: 45244, Stop: 45444, Start Num: 11

Candidate Starts for LilMoolah_66:

(Start: 11 @45244 has 11 MA's), (12, 45280), (13, 45337), (15, 45424),

Gene: LunaBlu_69 Start: 45387, Stop: 45587, Start Num: 11

Candidate Starts for LunaBlu_69:

(4, 45294), (Start: 6 @45354 has 2 MA's), (Start: 11 @45387 has 11 MA's), (12, 45423), (13, 45480), (15, 45567),

Gene: Moonbeam_67 Start: 44566, Stop: 44796, Start Num: 8

Candidate Starts for Moonbeam_67:

(5, 44506), (Start: 8 @44566 has 10 MA's), (Start: 11 @44596 has 11 MA's), (12, 44632), (13, 44689), (15, 44776),

Gene: Mova_71 Start: 44506, Stop: 44706, Start Num: 11

Candidate Starts for Mova_71:

(1, 44323), (Start: 11 @44506 has 11 MA's), (12, 44542), (13, 44599), (15, 44686),

Gene: Nivrat_64 Start: 45117, Stop: 45317, Start Num: 11

Candidate Starts for Nivrat_64:

(Start: 11 @45117 has 11 MA's), (12, 45153), (13, 45210), (15, 45297),

Gene: Pippy_67 Start: 44354, Stop: 44554, Start Num: 11

Candidate Starts for Pippy_67:

(Start: 8 @44324 has 10 MA's), (Start: 11 @44354 has 11 MA's), (12, 44390), (13, 44447), (15, 44534),

Gene: ShowerHandel_71 Start: 44996, Stop: 45229, Start Num: 8

Candidate Starts for ShowerHandel_71:

(5, 44936), (Start: 8 @44996 has 10 MA's), (Start: 11 @45026 has 11 MA's), (12, 45062), (13, 45119), (15, 45206),

Gene: ShroomBoi_70 Start: 45075, Stop: 45275, Start Num: 11

Candidate Starts for ShroomBoi_70:

(1, 44892), (2, 44895), (Start: 11 @45075 has 11 MA's), (12, 45111), (13, 45168), (15, 45255),

Gene: Spartacus_71 Start: 46163, Stop: 46372, Start Num: 10

Candidate Starts for Spartacus_71:

(Start: 10 @46163 has 1 MA's), (Start: 11 @46172 has 11 MA's), (12, 46208), (13, 46265), (15, 46352),

Gene: Starcevich_67 Start: 45325, Stop: 45561, Start Num: 6

Candidate Starts for Starcevich_67:

(1, 45175), (2, 45178), (Start: 6 @45325 has 2 MA's), (12, 45397), (13, 45454), (15, 45541),

Gene: Tweety_67 Start: 44108, Stop: 44341, Start Num: 7

Candidate Starts for Tweety_67:

(1, 43967), (3, 43973), (Start: 7 @44108 has 1 MA's), (9, 44114), (Start: 11 @44141 has 11 MA's), (12, 44177), (13, 44234), (15, 44321),

Gene: Violac_69 Start: 45814, Stop: 46023, Start Num: 10

Candidate Starts for Violac_69:

(Start: 10 @45814 has 1 MA's), (Start: 11 @45823 has 11 MA's), (12, 45859), (13, 45916), (15, 46003),

Gene: Whouxphf_65 Start: 44903, Stop: 45133, Start Num: 8

Candidate Starts for Whouxphf_65:

(5, 44843), (Start: 8 @44903 has 10 MA's), (Start: 11 @44933 has 11 MA's), (12, 44969), (13, 45026), (15, 45113),

Gene: XFactor_65 Start: 43727, Stop: 43927, Start Num: 11

Candidate Starts for XFactor_65:

(4, 43634), (Start: 6 @43694 has 2 MA's), (Start: 11 @43727 has 11 MA's), (12, 43763), (13, 43820), (15, 43907),

Gene: Zerg_67 Start: 44571, Stop: 44771, Start Num: 11

Candidate Starts for Zerg_67:

(4, 44478), (Start: 6 @44538 has 2 MA's), (Start: 11 @44571 has 11 MA's), (12, 44607), (13, 44664), (15, 44751),

Gene: Zizzle_72 Start: 46629, Stop: 46862, Start Num: 8

Candidate Starts for Zizzle_72:

(5, 46569), (Start: 8 @46629 has 10 MA's), (Start: 11 @46659 has 11 MA's), (12, 46695), (13, 46752), (15, 46839),