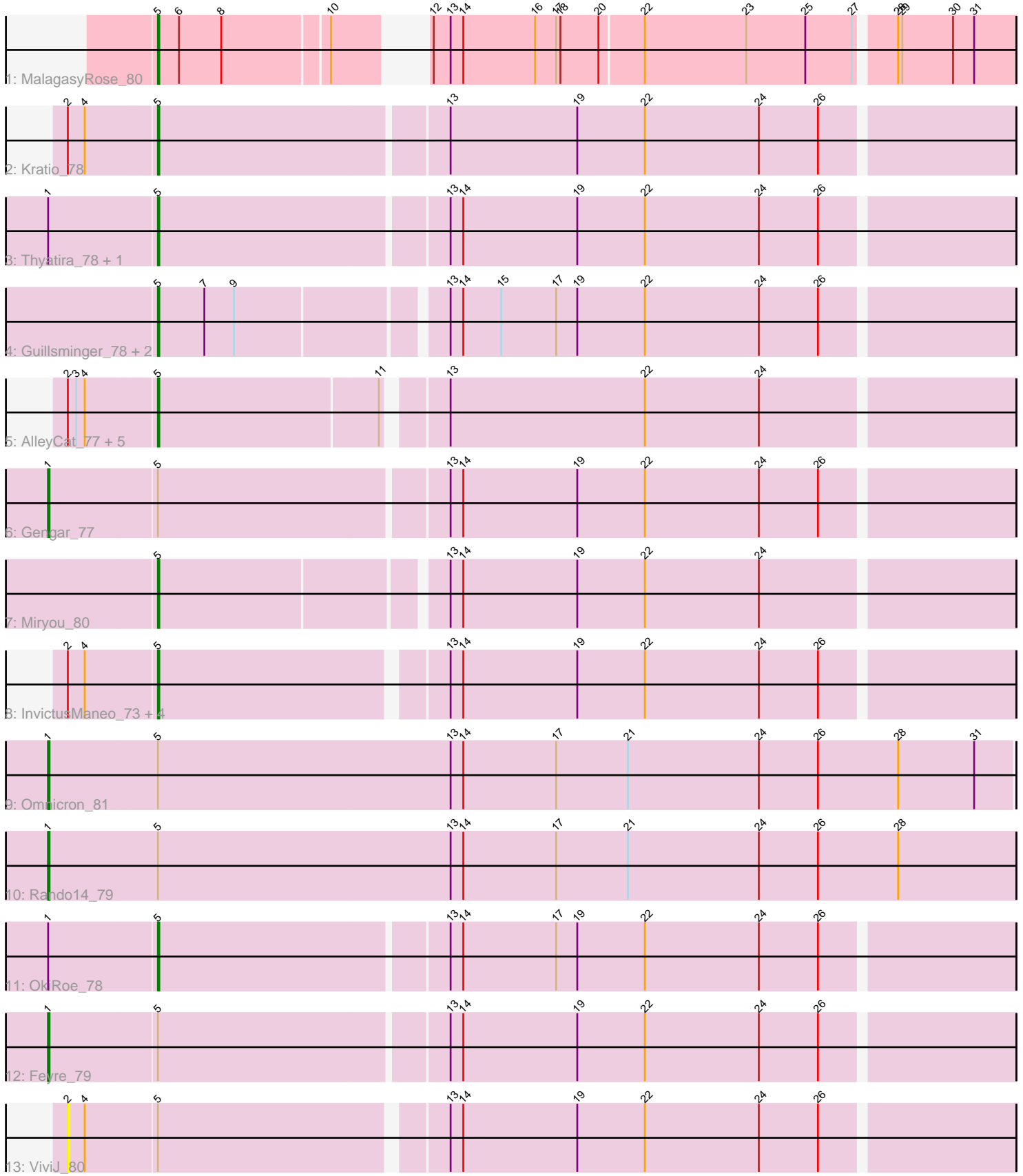


# Pham 216495



Note: Tracks are now grouped by subcluster and scaled. Switching in subcluster is indicated by changes in track color. Track scale is now set by default to display the region 30 bp upstream of start 1 to 30 bp downstream of the last possible start. If this default region is judged to be packed too tightly with annotated starts, the track will be further scaled to only show that region of the ORF with annotated starts. This action will be indicated by adding "Zoomed" to the title. For starts, yellow indicates the location of called starts comprised solely of Glimmer/GeneMark auto-annotations, green indicates the location of called starts with at least 1 manual gene annotation.

## Pham 216495 Report

This analysis was run 02/22/25 on database version 588.

Pham number 216495 has 25 members, 2 are drafts.

Phages represented in each track:

- Track 1 : MalagasyRose\_80
- Track 2 : Kratio\_78
- Track 3 : Thyatira\_78, Waterfoul\_77
- Track 4 : Guillsminger\_78, Leston\_77, Paola\_77
- Track 5 : AlleyCat\_77, Larva\_76, Edugator\_73, Dadosky\_77, Psycho\_75, Neighly\_77
- Track 6 : Gengar\_77
- Track 7 : Miryou\_80
- Track 8 : InvictusManeo\_73, SoSeph\_76, Heftyboy\_76, Collard\_73, Agent47\_75
- Track 9 : Omnicron\_81
- Track 10 : Rando14\_79
- Track 11 : OkiRoe\_78
- Track 12 : Feyre\_79
- Track 13 : ViviJ\_80

### ***Summary of Final Annotations (See graph section above for start numbers):***

The start number called the most often in the published annotations is 5, it was called in 19 of the 23 non-draft genes in the pham.

Genes that call this "Most Annotated" start:

- Agent47\_75, AlleyCat\_77, Collard\_73, Dadosky\_77, Edugator\_73, Guillsminger\_78, Heftyboy\_76, InvictusManeo\_73, Kratio\_78, Larva\_76, Leston\_77, MalagasyRose\_80, Miryou\_80, Neighly\_77, OkiRoe\_78, Paola\_77, Psycho\_75, SoSeph\_76, Thyatira\_78, Waterfoul\_77,

Genes that have the "Most Annotated" start but do not call it:

- Feyre\_79, Gengar\_77, Omnicron\_81, Rando14\_79, ViviJ\_80,

Genes that do not have the "Most Annotated" start:

- 

### **Summary by start number:**

#### Start 1:

- Found in 7 of 25 ( 28.0% ) of genes in pham
- Manual Annotations of this start: 4 of 23
- Called 57.1% of time when present
- Phage (with cluster) where this start called: Feyre\_79 (K5), Gengar\_77 (K5), Omnicron\_81 (K5), Rando14\_79 (K5),

#### Start 2:

- Found in 13 of 25 ( 52.0% ) of genes in pham
- No Manual Annotations of this start.
- Called 7.7% of time when present
- Phage (with cluster) where this start called: ViviJ\_80 (K5),

#### Start 5:

- Found in 25 of 25 ( 100.0% ) of genes in pham
- Manual Annotations of this start: 19 of 23
- Called 80.0% of time when present
- Phage (with cluster) where this start called: Agent47\_75 (K5), AlleyCat\_77 (K5), Collard\_73 (K5), Dadosky\_77 (K5), Edugator\_73 (K5), Guillsminger\_78 (K5), Heftyboy\_76 (K5), InvictusManeo\_73 (K5), Kratio\_78 (K5), Larva\_76 (K5), Leston\_77 (K5), MalagasyRose\_80 (AG), Miryou\_80 (K5), Neighly\_77 (K3), OkiRoe\_78 (K5), Paola\_77 (K5), Psycho\_75 (K5), SoSeph\_76 (K5), Thyatira\_78 (K5), Waterfoul\_77 (K5),

### **Summary by clusters:**

There are 3 clusters represented in this pham: K3, AG, K5,

Info for manual annotations of cluster AG:

- Start number 5 was manually annotated 1 time for cluster AG.

Info for manual annotations of cluster K5:

- Start number 1 was manually annotated 4 times for cluster K5.
- Start number 5 was manually annotated 18 times for cluster K5.

### **Gene Information:**

Gene: Agent47\_75 Start: 49835, Stop: 50419, Start Num: 5

Candidate Starts for Agent47\_75:

(2, 49775), (4, 49787), (Start: 5 @49835 has 19 MA's), (13, 50027), (14, 50036), (19, 50117), (22, 50165), (24, 50246), (26, 50288),

Gene: AlleyCat\_77 Start: 50302, Stop: 50883, Start Num: 5

Candidate Starts for AlleyCat\_77:

(2, 50242), (3, 50248), (4, 50254), (Start: 5 @50302 has 19 MA's), (11, 50455), (13, 50491), (22, 50629), (24, 50710),

Gene: Collard\_73 Start: 49796, Stop: 50380, Start Num: 5

Candidate Starts for Collard\_73:

(2, 49736), (4, 49748), (Start: 5 @49796 has 19 MA's), (13, 49988), (14, 49997), (19, 50078), (22, 50126), (24, 50207), (26, 50249),

Gene: Dadosky\_77 Start: 50303, Stop: 50884, Start Num: 5

Candidate Starts for Dadosky\_77:

(2, 50243), (3, 50249), (4, 50255), (Start: 5 @50303 has 19 MA's), (11, 50456), (13, 50492), (22, 50630), (24, 50711),

Gene: Edugator\_73 Start: 51474, Stop: 52055, Start Num: 5

Candidate Starts for Edugator\_73:

(2, 51414), (3, 51420), (4, 51426), (Start: 5 @51474 has 19 MA's), (11, 51627), (13, 51663), (22, 51801), (24, 51882),

Gene: Feyre\_79 Start: 54003, Stop: 54668, Start Num: 1

Candidate Starts for Feyre\_79:

(Start: 1 @54003 has 4 MA's), (Start: 5 @54078 has 19 MA's), (13, 54276), (14, 54285), (19, 54366), (22, 54414), (24, 54495), (26, 54537),

Gene: Gengar\_77 Start: 52228, Stop: 52893, Start Num: 1

Candidate Starts for Gengar\_77:

(Start: 1 @52228 has 4 MA's), (Start: 5 @52303 has 19 MA's), (13, 52501), (14, 52510), (19, 52591), (22, 52639), (24, 52720), (26, 52762),

Gene: Guillsminger\_78 Start: 52157, Stop: 52741, Start Num: 5

Candidate Starts for Guillsminger\_78:

(Start: 5 @52157 has 19 MA's), (7, 52190), (9, 52211), (13, 52349), (14, 52358), (15, 52385), (17, 52424), (19, 52439), (22, 52487), (24, 52568), (26, 52610),

Gene: Heftyboy\_76 Start: 52115, Stop: 52699, Start Num: 5

Candidate Starts for Heftyboy\_76:

(2, 52055), (4, 52067), (Start: 5 @52115 has 19 MA's), (13, 52307), (14, 52316), (19, 52397), (22, 52445), (24, 52526), (26, 52568),

Gene: InvictusManeo\_73 Start: 49839, Stop: 50423, Start Num: 5

Candidate Starts for InvictusManeo\_73:

(2, 49779), (4, 49791), (Start: 5 @49839 has 19 MA's), (13, 50031), (14, 50040), (19, 50121), (22, 50169), (24, 50250), (26, 50292),

Gene: Kratio\_78 Start: 51397, Stop: 51987, Start Num: 5

Candidate Starts for Kratio\_78:

(2, 51337), (4, 51349), (Start: 5 @51397 has 19 MA's), (13, 51595), (19, 51685), (22, 51733), (24, 51814), (26, 51856),

Gene: Larva\_76 Start: 51175, Stop: 51756, Start Num: 5

Candidate Starts for Larva\_76:

(2, 51115), (3, 51121), (4, 51127), (Start: 5 @51175 has 19 MA's), (11, 51328), (13, 51364), (22, 51502), (24, 51583),

Gene: Leston\_77 Start: 52274, Stop: 52858, Start Num: 5

Candidate Starts for Leston\_77:

(Start: 5 @52274 has 19 MA's), (7, 52307), (9, 52328), (13, 52466), (14, 52475), (15, 52502), (17, 52541), (19, 52556), (22, 52604), (24, 52685), (26, 52727),

Gene: MalagasyRose\_80 Start: 51405, Stop: 51959, Start Num: 5

Candidate Starts for MalagasyRose\_80:

(Start: 5 @51405 has 19 MA's), (6, 51420), (8, 51450), (10, 51522), (12, 51558), (13, 51570), (14, 51579), (16, 51630), (17, 51645), (18, 51648), (20, 51675), (22, 51705), (23, 51777), (25, 51819), (27, 51852), (28, 51876), (29, 51879), (30, 51915), (31, 51930),

Gene: Miryou\_80 Start: 54723, Stop: 55307, Start Num: 5

Candidate Starts for Miryou\_80:

(Start: 5 @54723 has 19 MA's), (13, 54915), (14, 54924), (19, 55005), (22, 55053), (24, 55134),

Gene: Neighly\_77 Start: 51174, Stop: 51755, Start Num: 5

Candidate Starts for Neighly\_77:

(2, 51114), (3, 51120), (4, 51126), (Start: 5 @51174 has 19 MA's), (11, 51327), (13, 51363), (22, 51501), (24, 51582),

Gene: OkiRoe\_78 Start: 52645, Stop: 53235, Start Num: 5

Candidate Starts for OkiRoe\_78:

(Start: 1 @52570 has 4 MA's), (Start: 5 @52645 has 19 MA's), (13, 52843), (14, 52852), (17, 52918), (19, 52933), (22, 52981), (24, 53062), (26, 53104),

Gene: Omnicron\_81 Start: 53663, Stop: 54343, Start Num: 1

Candidate Starts for Omnicron\_81:

(Start: 1 @53663 has 4 MA's), (Start: 5 @53738 has 19 MA's), (13, 53945), (14, 53954), (17, 54020), (21, 54071), (24, 54164), (26, 54206), (28, 54263), (31, 54317),

Gene: Paola\_77 Start: 52157, Stop: 52741, Start Num: 5

Candidate Starts for Paola\_77:

(Start: 5 @52157 has 19 MA's), (7, 52190), (9, 52211), (13, 52349), (14, 52358), (15, 52385), (17, 52424), (19, 52439), (22, 52487), (24, 52568), (26, 52610),

Gene: Psycho\_75 Start: 50300, Stop: 50881, Start Num: 5

Candidate Starts for Psycho\_75:

(2, 50240), (3, 50246), (4, 50252), (Start: 5 @50300 has 19 MA's), (11, 50453), (13, 50489), (22, 50627), (24, 50708),

Gene: Rando14\_79 Start: 52078, Stop: 52761, Start Num: 1

Candidate Starts for Rando14\_79:

(Start: 1 @52078 has 4 MA's), (Start: 5 @52153 has 19 MA's), (13, 52360), (14, 52369), (17, 52435), (21, 52486), (24, 52579), (26, 52621), (28, 52678),

Gene: SoSeph\_76 Start: 52115, Stop: 52699, Start Num: 5

Candidate Starts for SoSeph\_76:

(2, 52055), (4, 52067), (Start: 5 @52115 has 19 MA's), (13, 52307), (14, 52316), (19, 52397), (22, 52445), (24, 52526), (26, 52568),

Gene: Thyatira\_78 Start: 53863, Stop: 54453, Start Num: 5

Candidate Starts for Thyatira\_78:

(Start: 1 @53788 has 4 MA's), (Start: 5 @53863 has 19 MA's), (13, 54061), (14, 54070), (19, 54151), (22, 54199), (24, 54280), (26, 54322),

Gene: ViviJ\_80 Start: 51824, Stop: 52468, Start Num: 2

Candidate Starts for ViviJ\_80:

(2, 51824), (4, 51836), (Start: 5 @51884 has 19 MA's), (13, 52076), (14, 52085), (19, 52166), (22, 52214), (24, 52295), (26, 52337),

Gene: Waterfoul\_77 Start: 51933, Stop: 52523, Start Num: 5

Candidate Starts for Waterfoul\_77:

(Start: 1 @51858 has 4 MA's), (Start: 5 @51933 has 19 MA's), (13, 52131), (14, 52140), (19, 52221), (22, 52269), (24, 52350), (26, 52392),