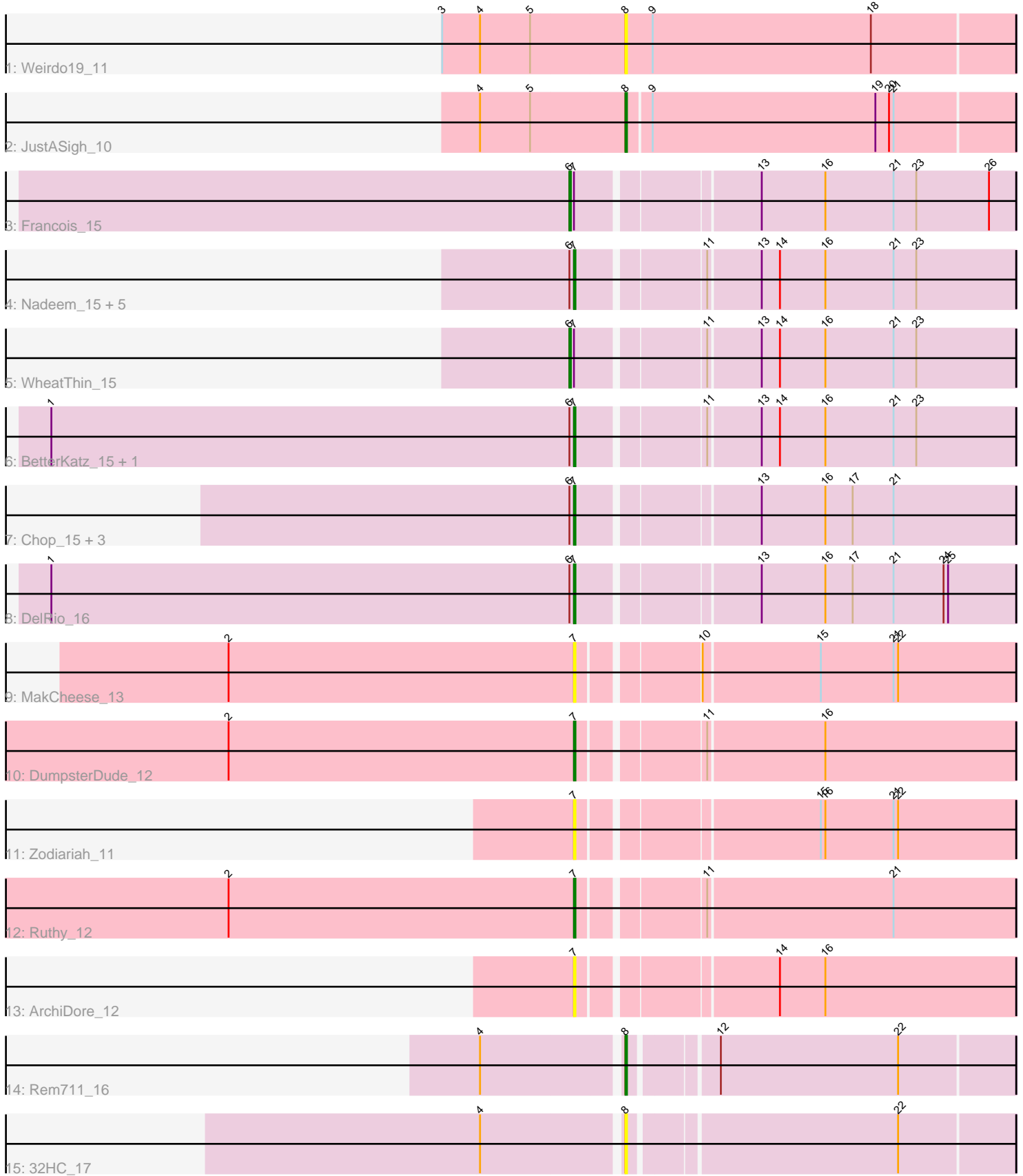


Pham 216500



Note: Tracks are now grouped by subcluster and scaled. Switching in subcluster is indicated by changes in track color. Track scale is now set by default to display the region 30 bp upstream of start 1 to 30 bp downstream of the last possible start. If this default region is judged to be packed too tightly with annotated starts, the track will be further scaled to only show that region of the ORF with annotated starts. This action will be indicated by adding "Zoomed" to the title. For starts, yellow indicates the location of called starts comprised solely of Glimmer/GeneMark auto-annotations, green indicates the location of called starts with at least 1 manual gene annotation.

Pham 216500 Report

This analysis was run 02/22/25 on database version 588.

Pham number 216500 has 24 members, 5 are drafts.

Phages represented in each track:

- Track 1 : Weirdo19_11
- Track 2 : JustASigh_10
- Track 3 : Francois_15
- Track 4 : Nadeem_15, Bock_15, Brylie_15, Parada_15, Mulch_15, NancyRae_15
- Track 5 : WheatThin_15
- Track 6 : BetterKatz_15, Pimento_16
- Track 7 : Chop_15, Hamood_15, Ayotoya_15, GrandSlam_15
- Track 8 : DelRio_16
- Track 9 : MakCheese_13
- Track 10 : DumpsterDude_12
- Track 11 : Zodiariah_11
- Track 12 : Ruthy_12
- Track 13 : ArchiDore_12
- Track 14 : Rem711_16
- Track 15 : 32HC_17

Summary of Final Annotations (See graph section above for start numbers):

The start number called the most often in the published annotations is 7, it was called in 15 of the 19 non-draft genes in the pham.

Genes that call this "Most Annotated" start:

- ArchiDore_12, Ayotoya_15, BetterKatz_15, Bock_15, Brylie_15, Chop_15, DelRio_16, DumpsterDude_12, GrandSlam_15, Hamood_15, MakCheese_13, Mulch_15, Nadeem_15, NancyRae_15, Parada_15, Pimento_16, Ruthy_12, Zodiariah_11,

Genes that have the "Most Annotated" start but do not call it:

- Francois_15, WheatThin_15,

Genes that do not have the "Most Annotated" start:

- 32HC_17, JustASigh_10, Rem711_16, Weirdo19_11,

Summary by start number:

Start 6:

- Found in 15 of 24 (62.5%) of genes in pham
- Manual Annotations of this start: 2 of 19
- Called 13.3% of time when present
- Phage (with cluster) where this start called: Francois_15 (DI), WheatThin_15 (DI),

Start 7:

- Found in 20 of 24 (83.3%) of genes in pham
- Manual Annotations of this start: 15 of 19
- Called 90.0% of time when present
- Phage (with cluster) where this start called: ArchiDore_12 (DW), Ayotoya_15 (DI), BetterKatz_15 (DI), Bock_15 (DI), Brylie_15 (DI), Chop_15 (DI), DelRio_16 (DI), DumpsterDude_12 (DW), GrandSlam_15 (DI), Hamood_15 (DI), MakCheese_13 (DW), Mulch_15 (DI), Nadeem_15 (DI), NancyRae_15 (DI), Parada_15 (DI), Pimento_16 (DI), Ruthy_12 (DW), Zodiariah_11 (DW),

Start 8:

- Found in 4 of 24 (16.7%) of genes in pham
- Manual Annotations of this start: 2 of 19
- Called 100.0% of time when present
- Phage (with cluster) where this start called: 32HC_17 (Z), JustASigh_10 (AH), Rem711_16 (Z), Weirdo19_11 (AH),

Summary by clusters:

There are 4 clusters represented in this pham: DW, AH, Z, DI,

Info for manual annotations of cluster AH:

- Start number 8 was manually annotated 1 time for cluster AH.

Info for manual annotations of cluster DI:

- Start number 6 was manually annotated 2 times for cluster DI.
- Start number 7 was manually annotated 13 times for cluster DI.

Info for manual annotations of cluster DW:

- Start number 7 was manually annotated 2 times for cluster DW.

Info for manual annotations of cluster Z:

- Start number 8 was manually annotated 1 time for cluster Z.

Gene Information:

Gene: 32HC_17 Start: 10805, Stop: 11047, Start Num: 8

Candidate Starts for 32HC_17:

(4, 10718), (Start: 8 @10805 has 2 MA's), (22, 10973),

Gene: ArchiDore_12 Start: 8060, Stop: 8335, Start Num: 7

Candidate Starts for ArchiDore_12:

(Start: 7 @8060 has 15 MA's), (14, 8180), (16, 8210),

Gene: Ayotoya_15 Start: 9620, Stop: 9898, Start Num: 7
Candidate Starts for Ayotoya_15:
(Start: 6 @9617 has 2 MA's), (Start: 7 @9620 has 15 MA's), (13, 9731), (16, 9773), (17, 9791), (21, 9818),

Gene: BetterKatz_15 Start: 9588, Stop: 9866, Start Num: 7
Candidate Starts for BetterKatz_15:
(1, 9243), (Start: 6 @9585 has 2 MA's), (Start: 7 @9588 has 15 MA's), (11, 9666), (13, 9699), (14, 9711), (16, 9741), (21, 9786), (23, 9801),

Gene: Bock_15 Start: 9338, Stop: 9616, Start Num: 7
Candidate Starts for Bock_15:
(Start: 6 @9335 has 2 MA's), (Start: 7 @9338 has 15 MA's), (11, 9416), (13, 9449), (14, 9461), (16, 9491), (21, 9536), (23, 9551),

Gene: Brylie_15 Start: 9335, Stop: 9613, Start Num: 7
Candidate Starts for Brylie_15:
(Start: 6 @9332 has 2 MA's), (Start: 7 @9335 has 15 MA's), (11, 9413), (13, 9446), (14, 9458), (16, 9488), (21, 9533), (23, 9548),

Gene: Chop_15 Start: 9368, Stop: 9646, Start Num: 7
Candidate Starts for Chop_15:
(Start: 6 @9365 has 2 MA's), (Start: 7 @9368 has 15 MA's), (13, 9479), (16, 9521), (17, 9539), (21, 9566),

Gene: DelRio_16 Start: 9845, Stop: 10123, Start Num: 7
Candidate Starts for DelRio_16:
(1, 9500), (Start: 6 @9842 has 2 MA's), (Start: 7 @9845 has 15 MA's), (13, 9956), (16, 9998), (17, 10016), (21, 10043), (24, 10076), (25, 10079),

Gene: DumpsterDude_12 Start: 8073, Stop: 8348, Start Num: 7
Candidate Starts for DumpsterDude_12:
(2, 7845), (Start: 7 @8073 has 15 MA's), (11, 8148), (16, 8223),

Gene: Francois_15 Start: 9346, Stop: 9627, Start Num: 6
Candidate Starts for Francois_15:
(Start: 6 @9346 has 2 MA's), (Start: 7 @9349 has 15 MA's), (13, 9460), (16, 9502), (21, 9547), (23, 9562), (26, 9610),

Gene: GrandSlam_15 Start: 9368, Stop: 9646, Start Num: 7
Candidate Starts for GrandSlam_15:
(Start: 6 @9365 has 2 MA's), (Start: 7 @9368 has 15 MA's), (13, 9479), (16, 9521), (17, 9539), (21, 9566),

Gene: Hamood_15 Start: 9368, Stop: 9646, Start Num: 7
Candidate Starts for Hamood_15:
(Start: 6 @9365 has 2 MA's), (Start: 7 @9368 has 15 MA's), (13, 9479), (16, 9521), (17, 9539), (21, 9566),

Gene: JustASigh_10 Start: 8248, Stop: 8499, Start Num: 8
Candidate Starts for JustASigh_10:
(4, 8155), (5, 8188), (Start: 8 @8248 has 2 MA's), (9, 8263), (19, 8410), (20, 8419), (21, 8422),

Gene: MakCheese_13 Start: 7880, Stop: 8155, Start Num: 7
Candidate Starts for MakCheese_13:
(2, 7652), (Start: 7 @7880 has 15 MA's), (10, 7952), (15, 8027), (21, 8075), (22, 8078),

Gene: Mulch_15 Start: 9335, Stop: 9613, Start Num: 7
Candidate Starts for Mulch_15:
(Start: 6 @9332 has 2 MA's), (Start: 7 @9335 has 15 MA's), (11, 9413), (13, 9446), (14, 9458), (16, 9488), (21, 9533), (23, 9548),

Gene: Nadeem_15 Start: 9335, Stop: 9613, Start Num: 7
Candidate Starts for Nadeem_15:
(Start: 6 @9332 has 2 MA's), (Start: 7 @9335 has 15 MA's), (11, 9413), (13, 9446), (14, 9458), (16, 9488), (21, 9533), (23, 9548),

Gene: NancyRae_15 Start: 9335, Stop: 9613, Start Num: 7
Candidate Starts for NancyRae_15:
(Start: 6 @9332 has 2 MA's), (Start: 7 @9335 has 15 MA's), (11, 9413), (13, 9446), (14, 9458), (16, 9488), (21, 9533), (23, 9548),

Gene: Parada_15 Start: 9335, Stop: 9613, Start Num: 7
Candidate Starts for Parada_15:
(Start: 6 @9332 has 2 MA's), (Start: 7 @9335 has 15 MA's), (11, 9413), (13, 9446), (14, 9458), (16, 9488), (21, 9533), (23, 9548),

Gene: Pimento_16 Start: 9539, Stop: 9817, Start Num: 7
Candidate Starts for Pimento_16:
(1, 9194), (Start: 6 @9536 has 2 MA's), (Start: 7 @9539 has 15 MA's), (11, 9617), (13, 9650), (14, 9662), (16, 9692), (21, 9737), (23, 9752),

Gene: Rem711_16 Start: 10853, Stop: 11095, Start Num: 8
Candidate Starts for Rem711_16:
(4, 10766), (Start: 8 @10853 has 2 MA's), (12, 10904), (22, 11021),

Gene: Ruthy_12 Start: 8144, Stop: 8419, Start Num: 7
Candidate Starts for Ruthy_12:
(2, 7916), (Start: 7 @8144 has 15 MA's), (11, 8219), (21, 8339),

Gene: Weirdo19_11 Start: 8017, Stop: 8271, Start Num: 8
Candidate Starts for Weirdo19_11:
(3, 7900), (4, 7924), (5, 7957), (Start: 8 @8017 has 2 MA's), (9, 8035), (18, 8179),

Gene: WheatThin_15 Start: 9332, Stop: 9613, Start Num: 6
Candidate Starts for WheatThin_15:
(Start: 6 @9332 has 2 MA's), (Start: 7 @9335 has 15 MA's), (11, 9413), (13, 9446), (14, 9458), (16, 9488), (21, 9533), (23, 9548),

Gene: Zodiariah_11 Start: 7870, Stop: 8145, Start Num: 7
Candidate Starts for Zodiariah_11:
(Start: 7 @7870 has 15 MA's), (15, 8017), (16, 8020), (21, 8065), (22, 8068),