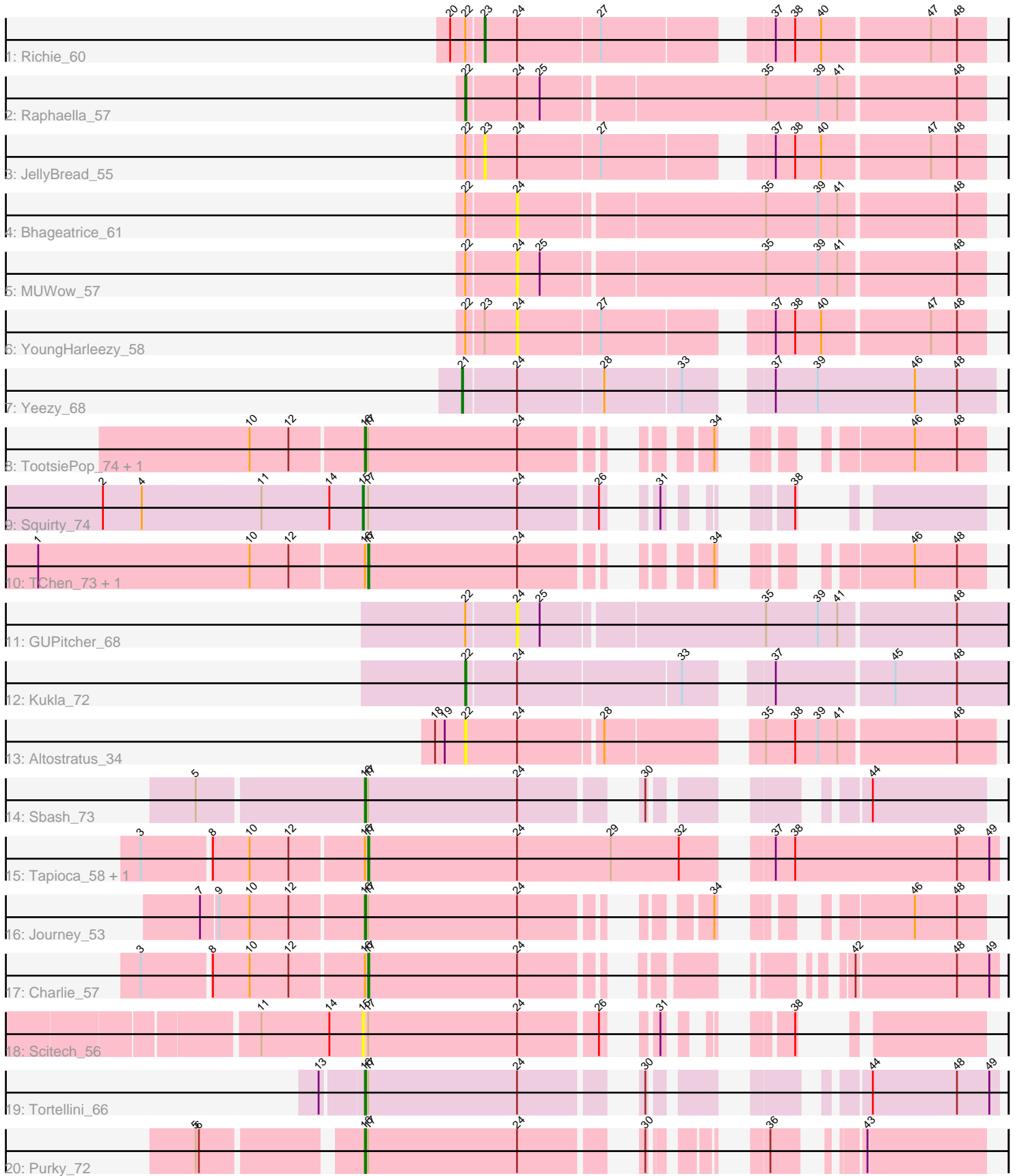


Pham 216520



Note: Tracks are now grouped by subcluster and scaled. Switching in subcluster is indicated by changes in track color. Track scale is now set by default to display the region 30 bp upstream of start 1 to 30 bp downstream of the last possible start. If this default region is judged to be packed too tightly with annotated starts, the track will be further scaled to only show that region of the ORF with annotated starts. This action will be indicated by adding "Zoomed" to the title. For starts, yellow indicates the location of called starts comprised solely of Glimmer/GeneMark auto-annotations, green indicates the location of called starts with at least 1 manual gene annotation.

Pham 216520 Report

This analysis was run 02/22/25 on database version 588.

Pham number 216520 has 23 members, 7 are drafts.

Phages represented in each track:

- Track 1 : Richie_60
- Track 2 : Raphaella_57
- Track 3 : JellyBread_55
- Track 4 : Bhageatrice_61
- Track 5 : MUWow_57
- Track 6 : YoungHarleezy_58
- Track 7 : Yeezy_68
- Track 8 : TootsiePop_74, Misha28_74
- Track 9 : Squirty_74
- Track 10 : TChen_73, LunaStella_71
- Track 11 : GUPitcher_68
- Track 12 : Kukla_72
- Track 13 : Altostratus_34
- Track 14 : Sbash_73
- Track 15 : Tapioca_58, Andies_54
- Track 16 : Journey_53
- Track 17 : Charlie_57
- Track 18 : Scitech_56
- Track 19 : Tortellini_66
- Track 20 : Purky_72

Summary of Final Annotations (See graph section above for start numbers):

The start number called the most often in the published annotations is 16, it was called in 6 of the 16 non-draft genes in the pham.

Genes that call this "Most Annotated" start:

- Journey_53, Misha28_74, Purky_72, Sbash_73, TootsiePop_74, Tortellini_66,

Genes that have the "Most Annotated" start but do not call it:

- Andies_54, Charlie_57, LunaStella_71, TChen_73, Tapioca_58,

Genes that do not have the "Most Annotated" start:

- Altostratus_34, Bhageatrice_61, GUPitcher_68, JellyBread_55, Kukla_72, MUWow_57, Raphaella_57, Richie_60, Scitech_56, Squirty_74, Yeezy_68, YoungHarleezy_58,

Summary by start number:

Start 15:

- Found in 2 of 23 (8.7%) of genes in pham
- Manual Annotations of this start: 1 of 16
- Called 100.0% of time when present
- Phage (with cluster) where this start called: Scitech_56 (N), Squirty_74 (F3),

Start 16:

- Found in 11 of 23 (47.8%) of genes in pham
- Manual Annotations of this start: 6 of 16
- Called 54.5% of time when present
- Phage (with cluster) where this start called: Journey_53 (N), Misha28_74 (F1), Purky_72 (P6), Sbash_73 (I2), TootsiePop_74 (F1), Tortellini_66 (P2),

Start 17:

- Found in 13 of 23 (56.5%) of genes in pham
- Manual Annotations of this start: 5 of 16
- Called 38.5% of time when present
- Phage (with cluster) where this start called: Andies_54 (N), Charlie_57 (N), LunaStella_71 (F4), TChen_73 (F4), Tapioca_58 (N),

Start 21:

- Found in 1 of 23 (4.3%) of genes in pham
- Manual Annotations of this start: 1 of 16
- Called 100.0% of time when present
- Phage (with cluster) where this start called: Yeezy_68 (CZ3),

Start 22:

- Found in 9 of 23 (39.1%) of genes in pham
- Manual Annotations of this start: 2 of 16
- Called 33.3% of time when present
- Phage (with cluster) where this start called: Altostratus_34 (FS), Kukla_72 (FJ), Raphaella_57 (AY),

Start 23:

- Found in 3 of 23 (13.0%) of genes in pham
- Manual Annotations of this start: 1 of 16
- Called 66.7% of time when present
- Phage (with cluster) where this start called: JellyBread_55 (AY), Richie_60 (AY),

Start 24:

- Found in 23 of 23 (100.0%) of genes in pham
- No Manual Annotations of this start.
- Called 17.4% of time when present
- Phage (with cluster) where this start called: Bhageatrice_61 (AY), GUPitcher_68 (FJ), MUWow_57 (AY), YoungHarleezy_58 (AY),

Summary by clusters:

There are 11 clusters represented in this pham: P2, F1, FS, P6, CZ3, I2, N, F3, AY, F4, FJ,

Info for manual annotations of cluster AY:

- Start number 22 was manually annotated 1 time for cluster AY.
- Start number 23 was manually annotated 1 time for cluster AY.

Info for manual annotations of cluster CZ3:

- Start number 21 was manually annotated 1 time for cluster CZ3.

Info for manual annotations of cluster F1:

- Start number 16 was manually annotated 2 times for cluster F1.

Info for manual annotations of cluster F3:

- Start number 15 was manually annotated 1 time for cluster F3.

Info for manual annotations of cluster F4:

- Start number 17 was manually annotated 2 times for cluster F4.

Info for manual annotations of cluster FJ:

- Start number 22 was manually annotated 1 time for cluster FJ.

Info for manual annotations of cluster I2:

- Start number 16 was manually annotated 1 time for cluster I2.

Info for manual annotations of cluster N:

- Start number 16 was manually annotated 1 time for cluster N.
- Start number 17 was manually annotated 3 times for cluster N.

Info for manual annotations of cluster P2:

- Start number 16 was manually annotated 1 time for cluster P2.

Info for manual annotations of cluster P6:

- Start number 16 was manually annotated 1 time for cluster P6.

Gene Information:

Gene: Altostratus_34 Start: 24819, Stop: 24376, Start Num: 22

Candidate Starts for Altostratus_34:

(18, 24846), (19, 24837), (Start: 22 @24819 has 2 MA's), (24, 24771), (28, 24699), (35, 24582), (38, 24555), (39, 24534), (41, 24516), (48, 24411),

Gene: Andies_54 Start: 38349, Stop: 38900, Start Num: 17

Candidate Starts for Andies_54:

(3, 38151), (8, 38211), (10, 38244), (12, 38280), (Start: 16 @38346 has 6 MA's), (Start: 17 @38349 has 5 MA's), (24, 38487), (29, 38574), (32, 38637), (37, 38694), (38, 38712), (48, 38862), (49, 38892),

Gene: Bhageatrice_61 Start: 35668, Stop: 36084, Start Num: 24

Candidate Starts for Bhageatrice_61:

(Start: 22 @35623 has 2 MA's), (24, 35668), (35, 35887), (39, 35935), (41, 35953), (48, 36058),

Gene: Charlie_57 Start: 37679, Stop: 38128, Start Num: 17

Candidate Starts for Charlie_57:

(3, 37481), (8, 37541), (10, 37574), (12, 37610), (Start: 16 @37676 has 6 MA's), (Start: 17 @37679 has 5 MA's), (24, 37817), (42, 38000), (48, 38090), (49, 38120),

Gene: GUPitcher_68 Start: 41078, Stop: 41515, Start Num: 24

Candidate Starts for GUPitcher_68:

(Start: 22 @41033 has 2 MA's), (24, 41078), (25, 41099), (35, 41297), (39, 41345), (41, 41363), (48, 41468),

Gene: JellyBread_55 Start: 32410, Stop: 32832, Start Num: 23

Candidate Starts for JellyBread_55:

(Start: 22 @32395 has 2 MA's), (Start: 23 @32410 has 1 MA's), (24, 32440), (27, 32515), (37, 32644), (38, 32662), (40, 32686), (47, 32782), (48, 32806),

Gene: Journey_53 Start: 35411, Stop: 35842, Start Num: 16

Candidate Starts for Journey_53:

(7, 35267), (9, 35282), (10, 35309), (12, 35345), (Start: 16 @35411 has 6 MA's), (Start: 17 @35414 has 5 MA's), (24, 35552), (34, 35669), (46, 35777), (48, 35816),

Gene: Kukla_72 Start: 41885, Stop: 42343, Start Num: 22

Candidate Starts for Kukla_72:

(Start: 22 @41885 has 2 MA's), (24, 41930), (33, 42077), (37, 42134), (45, 42239), (48, 42296),

Gene: LunaStella_71 Start: 45366, Stop: 45794, Start Num: 17

Candidate Starts for LunaStella_71:

(1, 45066), (10, 45261), (12, 45297), (Start: 16 @45363 has 6 MA's), (Start: 17 @45366 has 5 MA's), (24, 45504), (34, 45621), (46, 45729), (48, 45768),

Gene: MUWow_57 Start: 33731, Stop: 34147, Start Num: 24

Candidate Starts for MUWow_57:

(Start: 22 @33686 has 2 MA's), (24, 33731), (25, 33752), (35, 33950), (39, 33998), (41, 34016), (48, 34121),

Gene: Misha28_74 Start: 45990, Stop: 46421, Start Num: 16

Candidate Starts for Misha28_74:

(10, 45888), (12, 45924), (Start: 16 @45990 has 6 MA's), (Start: 17 @45993 has 5 MA's), (24, 46131), (34, 46248), (46, 46356), (48, 46395),

Gene: Purky_72 Start: 44925, Stop: 45359, Start Num: 16

Candidate Starts for Purky_72:

(5, 44793), (6, 44796), (Start: 16 @44925 has 6 MA's), (Start: 17 @44928 has 5 MA's), (24, 45066), (30, 45147), (36, 45201), (43, 45252),

Gene: Raphaella_57 Start: 33209, Stop: 33670, Start Num: 22

Candidate Starts for Raphaella_57:

(Start: 22 @33209 has 2 MA's), (24, 33254), (25, 33275), (35, 33473), (39, 33521), (41, 33539), (48, 33644),

Gene: Richie_60 Start: 34284, Stop: 34706, Start Num: 23

Candidate Starts for Richie_60:

(20, 34257), (Start: 22 @34269 has 2 MA's), (Start: 23 @34284 has 1 MA's), (24, 34314), (27, 34389), (37, 34518), (38, 34536), (40, 34560), (47, 34656), (48, 34680),

Gene: Sbash_73 Start: 47394, Stop: 47846, Start Num: 16

Candidate Starts for Sbash_73:

(5, 47247), (Start: 16 @47394 has 6 MA's), (Start: 17 @47397 has 5 MA's), (24, 47535), (30, 47616), (44, 47742),

Gene: Scitech_56 Start: 38238, Stop: 38633, Start Num: 15

Candidate Starts for Scitech_56:

(11, 38148), (14, 38208), (Start: 15 @38238 has 1 MA's), (Start: 17 @38241 has 5 MA's), (24, 38379), (26, 38448), (31, 38466), (38, 38520),

Gene: Squirty_74 Start: 49246, Stop: 49641, Start Num: 15

Candidate Starts for Squirty_74:

(2, 49012), (4, 49048), (11, 49156), (14, 49216), (Start: 15 @49246 has 1 MA's), (Start: 17 @49249 has 5 MA's), (24, 49387), (26, 49456), (31, 49474), (38, 49528),

Gene: TChen_73 Start: 47317, Stop: 47745, Start Num: 17

Candidate Starts for TChen_73:

(1, 47017), (10, 47212), (12, 47248), (Start: 16 @47314 has 6 MA's), (Start: 17 @47317 has 5 MA's), (24, 47455), (34, 47572), (46, 47680), (48, 47719),

Gene: Tapioca_58 Start: 38788, Stop: 39339, Start Num: 17

Candidate Starts for Tapioca_58:

(3, 38590), (8, 38650), (10, 38683), (12, 38719), (Start: 16 @38785 has 6 MA's), (Start: 17 @38788 has 5 MA's), (24, 38926), (29, 39013), (32, 39076), (37, 39133), (38, 39151), (48, 39301), (49, 39331),

Gene: TootsiePop_74 Start: 45990, Stop: 46421, Start Num: 16

Candidate Starts for TootsiePop_74:

(10, 45888), (12, 45924), (Start: 16 @45990 has 6 MA's), (Start: 17 @45993 has 5 MA's), (24, 46131), (34, 46248), (46, 46356), (48, 46395),

Gene: Tortellini_66 Start: 44536, Stop: 45000, Start Num: 16

Candidate Starts for Tortellini_66:

(13, 44500), (Start: 16 @44536 has 6 MA's), (Start: 17 @44539 has 5 MA's), (24, 44677), (30, 44758), (44, 44884), (48, 44962), (49, 44992),

Gene: Yeezy_68 Start: 43930, Stop: 44385, Start Num: 21

Candidate Starts for Yeezy_68:

(Start: 21 @43930 has 1 MA's), (24, 43978), (28, 44056), (33, 44125), (37, 44182), (39, 44221), (46, 44311), (48, 44350),

Gene: YoungHarleezy_58 Start: 33817, Stop: 34209, Start Num: 24

Candidate Starts for YoungHarleezy_58:

(Start: 22 @33772 has 2 MA's), (Start: 23 @33787 has 1 MA's), (24, 33817), (27, 33892), (37, 34021), (38, 34039), (40, 34063), (47, 34159), (48, 34183),