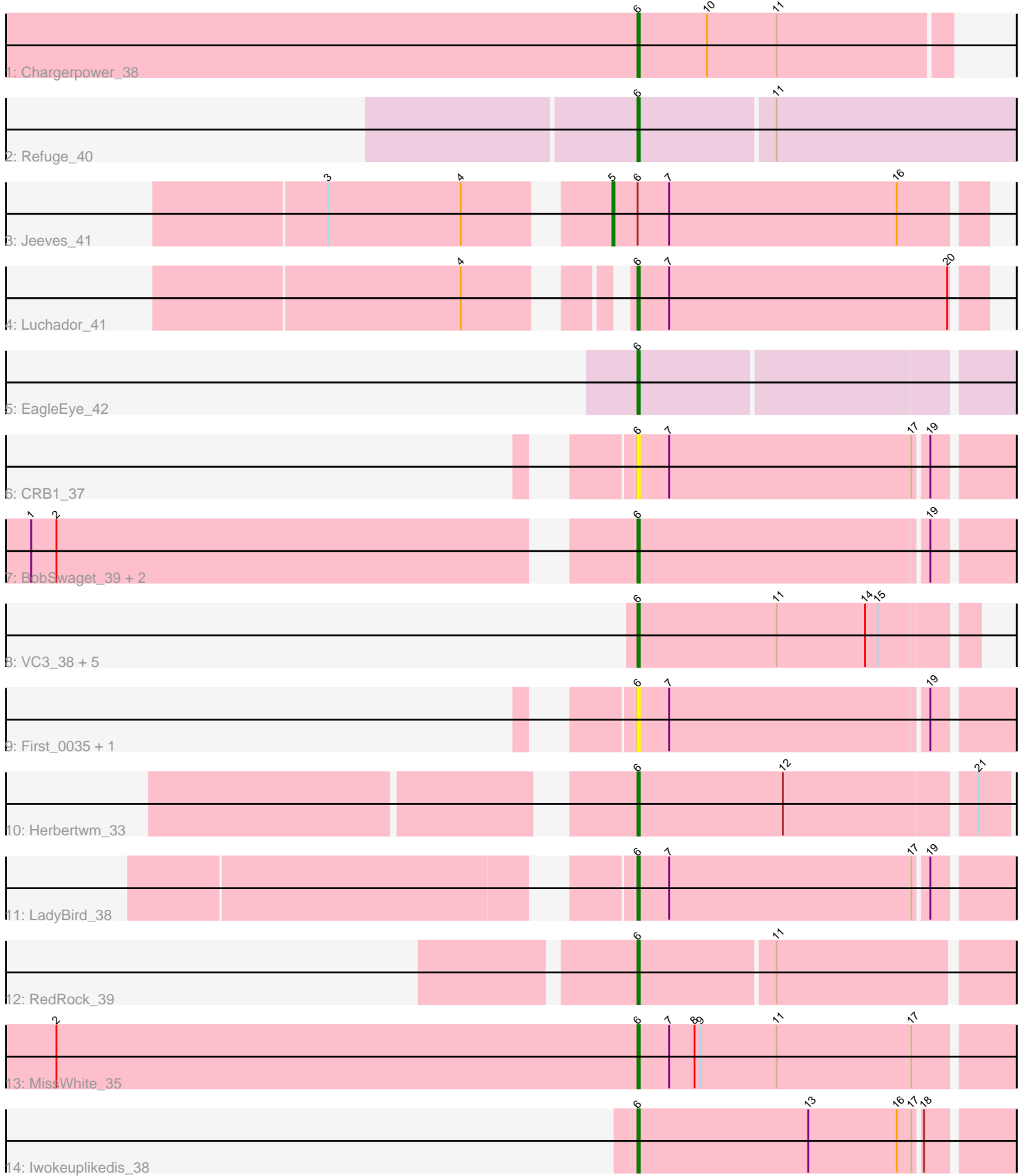


Pham 216541



Note: Tracks are now grouped by subcluster and scaled. Switching in subcluster is indicated by changes in track color. Track scale is now set by default to display the region 30 bp upstream of start 1 to 30 bp downstream of the last possible start. If this default region is judged to be packed too tightly with annotated starts, the track will be further scaled to only show that region of the ORF with annotated starts. This action will be indicated by adding "Zoomed" to the title. For starts, yellow indicates the location of called starts comprised solely of Glimmer/GeneMark auto-annotations, green indicates the location of called starts with at least 1 manual gene annotation.

Pham 216541 Report

This analysis was run 02/22/25 on database version 588.

Pham number 216541 has 22 members, 3 are drafts.

Phages represented in each track:

- Track 1 : Chargerpower_38
- Track 2 : Refuge_40
- Track 3 : Jeeves_41
- Track 4 : Luchador_41
- Track 5 : EagleEye_42
- Track 6 : CRB1_37
- Track 7 : BobSwaget_39, Lokk_40, Rachaly_40
- Track 8 : VC3_38, C3_33, AN9_38, AN3_35, VA6_35, ANI8_38
- Track 9 : First_0035, 20ES_36
- Track 10 : Herbertwm_33
- Track 11 : LadyBird_38
- Track 12 : RedRock_39
- Track 13 : MissWhite_35
- Track 14 : Iwokeuplikedis_38

Summary of Final Annotations (See graph section above for start numbers):

The start number called the most often in the published annotations is 6, it was called in 18 of the 19 non-draft genes in the pham.

Genes that call this "Most Annotated" start:

- 20ES_36, AN3_35, AN9_38, ANI8_38, BobSwaget_39, C3_33, CRB1_37, Chargerpower_38, EagleEye_42, First_0035, Herbertwm_33, Iwokeuplikedis_38, LadyBird_38, Lokk_40, Luchador_41, MissWhite_35, Rachaly_40, RedRock_39, Refuge_40, VA6_35, VC3_38,

Genes that have the "Most Annotated" start but do not call it:

- Jeeves_41,

Genes that do not have the "Most Annotated" start:

-

Summary by start number:

Start 5:

- Found in 1 of 22 (4.5%) of genes in pham
- Manual Annotations of this start: 1 of 19
- Called 100.0% of time when present
- Phage (with cluster) where this start called: Jeeves_41 (A14),

Start 6:

- Found in 22 of 22 (100.0%) of genes in pham
- Manual Annotations of this start: 18 of 19
- Called 95.5% of time when present
- Phage (with cluster) where this start called: 20ES_36 (A2), AN3_35 (A2), AN9_38 (A2), AN18_38 (A2), BobSwaget_39 (A2), C3_33 (A2), CRB1_37 (A2), Chargerpower_38 (A), EagleEye_42 (A16), First_0035 (A2), Herbertwm_33 (A2), Iwokeuplikedis_38 (A2), LadyBird_38 (A2), Lokk_40 (A2), Luchador_41 (A14), MissWhite_35 (A2), Rachaly_40 (A2), RedRock_39 (A2), Refuge_40 (A12), VA6_35 (A2), VC3_38 (A2),

Summary by clusters:

There are 5 clusters represented in this pham: A, A14, A2, A16, A12,

Info for manual annotations of cluster A:

- Start number 6 was manually annotated 1 time for cluster A.

Info for manual annotations of cluster A12:

- Start number 6 was manually annotated 1 time for cluster A12.

Info for manual annotations of cluster A14:

- Start number 5 was manually annotated 1 time for cluster A14.
- Start number 6 was manually annotated 1 time for cluster A14.

Info for manual annotations of cluster A16:

- Start number 6 was manually annotated 1 time for cluster A16.

Info for manual annotations of cluster A2:

- Start number 6 was manually annotated 14 times for cluster A2.

Gene Information:

Gene: 20ES_36 Start: 27465, Stop: 27295, Start Num: 6

Candidate Starts for 20ES_36:

(Start: 6 @27465 has 18 MA's), (7, 27450), (19, 27330),

Gene: AN3_35 Start: 27506, Stop: 27351, Start Num: 6

Candidate Starts for AN3_35:

(Start: 6 @27506 has 18 MA's), (11, 27440), (14, 27398), (15, 27392),

Gene: AN9_38 Start: 27491, Stop: 27336, Start Num: 6

Candidate Starts for AN9_38:

(Start: 6 @27491 has 18 MA's), (11, 27425), (14, 27383), (15, 27377),

Gene: ANI8_38 Start: 27491, Stop: 27336, Start Num: 6
Candidate Starts for ANI8_38:
(Start: 6 @27491 has 18 MA's), (11, 27425), (14, 27383), (15, 27377),

Gene: BobSwaget_39 Start: 28627, Stop: 28457, Start Num: 6
Candidate Starts for BobSwaget_39:
(1, 28894), (2, 28882), (Start: 6 @28627 has 18 MA's), (19, 28492),

Gene: C3_33 Start: 27491, Stop: 27336, Start Num: 6
Candidate Starts for C3_33:
(Start: 6 @27491 has 18 MA's), (11, 27425), (14, 27383), (15, 27377),

Gene: CRB1_37 Start: 27951, Stop: 27781, Start Num: 6
Candidate Starts for CRB1_37:
(Start: 6 @27951 has 18 MA's), (7, 27936), (17, 27822), (19, 27816),

Gene: Chargerpower_38 Start: 27456, Stop: 27310, Start Num: 6
Candidate Starts for Chargerpower_38:
(Start: 6 @27456 has 18 MA's), (10, 27423), (11, 27390),

Gene: EagleEye_42 Start: 28092, Stop: 27922, Start Num: 6
Candidate Starts for EagleEye_42:
(Start: 6 @28092 has 18 MA's),

Gene: First_0035 Start: 27341, Stop: 27171, Start Num: 6
Candidate Starts for First_0035:
(Start: 6 @27341 has 18 MA's), (7, 27326), (19, 27206),

Gene: Herbertwm_33 Start: 26340, Stop: 26170, Start Num: 6
Candidate Starts for Herbertwm_33:
(Start: 6 @26340 has 18 MA's), (12, 26271), (21, 26184),

Gene: Iwokeuplikedis_38 Start: 27721, Stop: 27551, Start Num: 6
Candidate Starts for Iwokeuplikedis_38:
(Start: 6 @27721 has 18 MA's), (13, 27640), (16, 27598), (17, 27592), (18, 27589),

Gene: Jeeves_41 Start: 28311, Stop: 28138, Start Num: 5
Candidate Starts for Jeeves_41:
(3, 28431), (4, 28368), (Start: 5 @28311 has 1 MA's), (Start: 6 @28299 has 18 MA's), (7, 28284), (16, 28176),

Gene: LadyBird_38 Start: 27910, Stop: 27740, Start Num: 6
Candidate Starts for LadyBird_38:
(Start: 6 @27910 has 18 MA's), (7, 27895), (17, 27781), (19, 27775),

Gene: Lokk_40 Start: 29149, Stop: 28979, Start Num: 6
Candidate Starts for Lokk_40:
(1, 29416), (2, 29404), (Start: 6 @29149 has 18 MA's), (19, 29014),

Gene: Luchador_41 Start: 30058, Stop: 29897, Start Num: 6
Candidate Starts for Luchador_41:
(4, 30115), (Start: 6 @30058 has 18 MA's), (7, 30043), (20, 29911),

Gene: MissWhite_35 Start: 26407, Stop: 26234, Start Num: 6

Candidate Starts for MissWhite_35:

(2, 26683), (Start: 6 @26407 has 18 MA's), (7, 26392), (8, 26380), (9, 26377), (11, 26341), (17, 26278),

Gene: Rachaly_40 Start: 29223, Stop: 29053, Start Num: 6

Candidate Starts for Rachaly_40:

(1, 29490), (2, 29478), (Start: 6 @29223 has 18 MA's), (19, 29088),

Gene: RedRock_39 Start: 29082, Stop: 28912, Start Num: 6

Candidate Starts for RedRock_39:

(Start: 6 @29082 has 18 MA's), (11, 29019),

Gene: Refuge_40 Start: 30004, Stop: 29828, Start Num: 6

Candidate Starts for Refuge_40:

(Start: 6 @30004 has 18 MA's), (11, 29941),

Gene: VA6_35 Start: 27503, Stop: 27348, Start Num: 6

Candidate Starts for VA6_35:

(Start: 6 @27503 has 18 MA's), (11, 27437), (14, 27395), (15, 27389),

Gene: VC3_38 Start: 27491, Stop: 27336, Start Num: 6

Candidate Starts for VC3_38:

(Start: 6 @27491 has 18 MA's), (11, 27425), (14, 27383), (15, 27377),