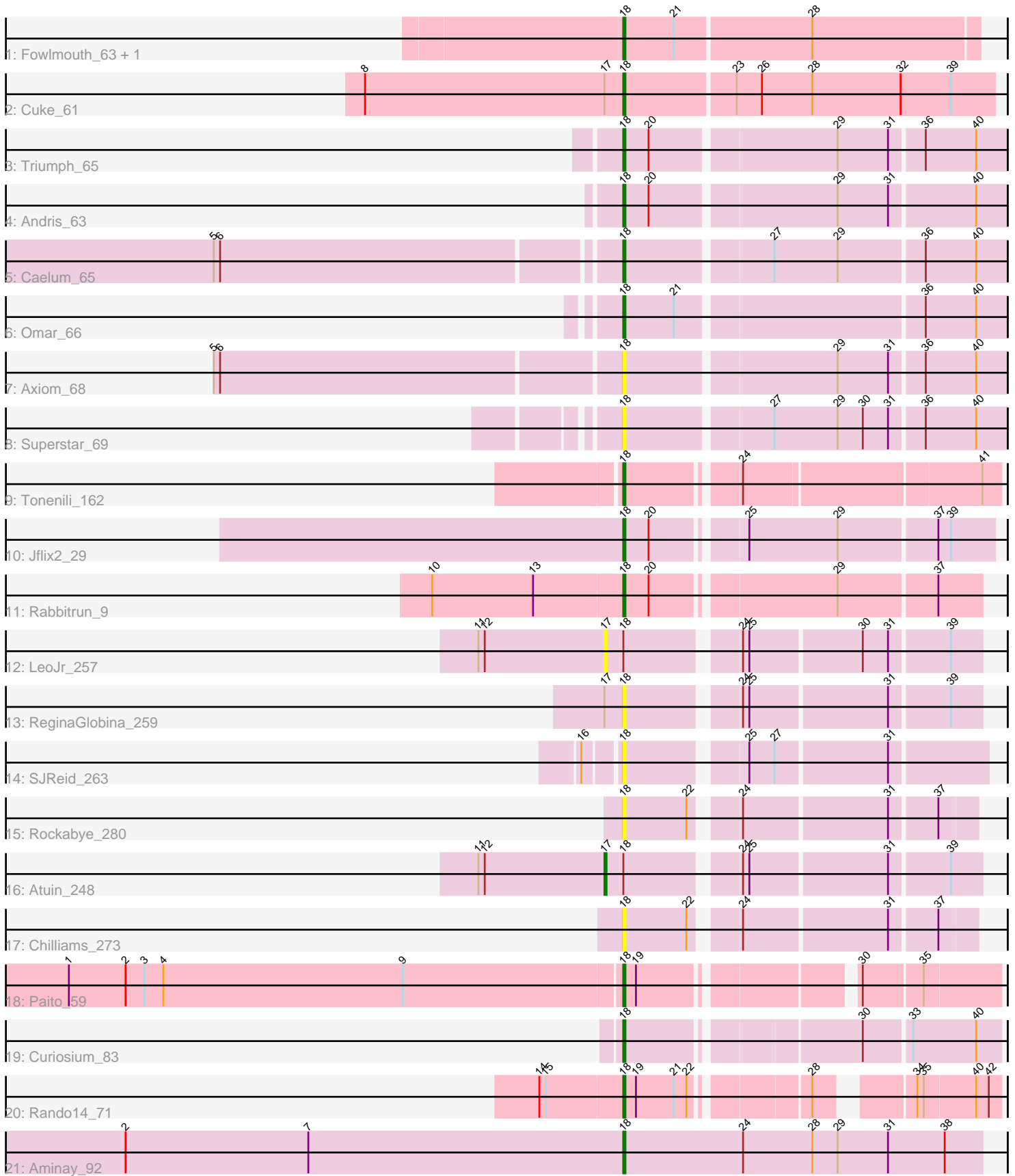


Pham 216546



Note: Tracks are now grouped by subcluster and scaled. Switching in subcluster is indicated by changes in track color. Track scale is now set by default to display the region 30 bp upstream of start 1 to 30 bp downstream of the last possible start. If this default region is judged to be packed too tightly with annotated starts, the track will be further scaled to only show that region of the ORF with annotated starts. This action will be indicated by adding "Zoomed" to the title. For starts, yellow indicates the location of called starts comprised solely of Glimmer/GeneMark auto-annotations, green indicates the location of called starts with at least 1 manual gene annotation.

Pham 216546 Report

This analysis was run 02/22/25 on database version 588.

Pham number 216546 has 22 members, 7 are drafts.

Phages represented in each track:

- Track 1 : Fowlmouth_63, MrMiyagi_62
- Track 2 : Cuke_61
- Track 3 : Triumph_65
- Track 4 : Andris_63
- Track 5 : Caelum_65
- Track 6 : Omar_66
- Track 7 : Axiom_68
- Track 8 : Superstar_69
- Track 9 : Tonenili_162
- Track 10 : Jflix2_29
- Track 11 : Rabbitrun_9
- Track 12 : LeoJr_257
- Track 13 : ReginaGlobina_259
- Track 14 : SJReid_263
- Track 15 : Rockabye_280
- Track 16 : Atuin_248
- Track 17 : Chilliams_273
- Track 18 : Paito_59
- Track 19 : Curiosium_83
- Track 20 : Rando14_71
- Track 21 : Aminay_92

Summary of Final Annotations (See graph section above for start numbers):

The start number called the most often in the published annotations is 18, it was called in 14 of the 15 non-draft genes in the pham.

Genes that call this "Most Annotated" start:

- Aminay_92, Andris_63, Axiom_68, Caelum_65, Chilliams_273, Cuke_61, Curiosium_83, Fowlmouth_63, Jflix2_29, MrMiyagi_62, Omar_66, Paito_59, Rabbitrun_9, Rando14_71, ReginaGlobina_259, Rockabye_280, SJReid_263, Superstar_69, Tonenili_162, Triumph_65,

Genes that have the "Most Annotated" start but do not call it:

- Atuin_248, LeoJr_257,

Genes that do not have the "Most Annotated" start:

-

Summary by start number:

Start 17:

- Found in 4 of 22 (18.2%) of genes in pham
- Manual Annotations of this start: 1 of 15
- Called 50.0% of time when present
- Phage (with cluster) where this start called: Atuin_248 (FC), LeoJr_257 (FC),

Start 18:

- Found in 22 of 22 (100.0%) of genes in pham
- Manual Annotations of this start: 14 of 15
- Called 90.9% of time when present
- Phage (with cluster) where this start called: Aminay_92 (K7), Andris_63 (BD2), Axiom_68 (BD2), Caelum_65 (BD2), Chilliams_273 (FC), Cuke_61 (AC), Curiosium_83 (K1), Fowlmouth_63 (AC), Jflix2_29 (CF), MrMiyagi_62 (AC), Omar_66 (BD2), Paito_59 (G1), Rabbitrun_9 (DU2), Rando14_71 (K5), ReginaGlobina_259 (FC), Rockabye_280 (FC), SJReid_263 (FC), Superstar_69 (BD2), Tonenili_162 (C1), Triumph_65 (BD2),

Summary by clusters:

There are 10 clusters represented in this pham: AC, G1, CF, K1, FC, K7, K5, BD2, C1, DU2,

Info for manual annotations of cluster AC:

- Start number 18 was manually annotated 3 times for cluster AC.

Info for manual annotations of cluster BD2:

- Start number 18 was manually annotated 4 times for cluster BD2.

Info for manual annotations of cluster C1:

- Start number 18 was manually annotated 1 time for cluster C1.

Info for manual annotations of cluster CF:

- Start number 18 was manually annotated 1 time for cluster CF.

Info for manual annotations of cluster DU2:

- Start number 18 was manually annotated 1 time for cluster DU2.

Info for manual annotations of cluster FC:

- Start number 17 was manually annotated 1 time for cluster FC.

Info for manual annotations of cluster G1:

- Start number 18 was manually annotated 1 time for cluster G1.

Info for manual annotations of cluster K1:

- Start number 18 was manually annotated 1 time for cluster K1.

Info for manual annotations of cluster K5:

- Start number 18 was manually annotated 1 time for cluster K5.

Info for manual annotations of cluster K7:

- Start number 18 was manually annotated 1 time for cluster K7.

Gene Information:

Gene: Aminay_92 Start: 55581, Stop: 55751, Start Num: 18

Candidate Starts for Aminay_92:

(2, 55344), (7, 55431), (Start: 18 @55581 has 14 MA's), (24, 55638), (28, 55671), (29, 55683), (31, 55707), (38, 55734),

Gene: Andris_63 Start: 42730, Stop: 42557, Start Num: 18

Candidate Starts for Andris_63:

(Start: 18 @42730 has 14 MA's), (20, 42718), (29, 42634), (31, 42610), (40, 42571),

Gene: Atuin_248 Start: 159446, Stop: 159610, Start Num: 17

Candidate Starts for Atuin_248:

(11, 159386), (12, 159389), (Start: 17 @159446 has 1 MA's), (Start: 18 @159455 has 14 MA's), (24, 159503), (25, 159506), (31, 159569), (39, 159596),

Gene: Axiom_68 Start: 43088, Stop: 42915, Start Num: 18

Candidate Starts for Axiom_68:

(5, 43277), (6, 43274), (Start: 18 @43088 has 14 MA's), (29, 42992), (31, 42968), (36, 42953), (40, 42929),

Gene: Caelum_65 Start: 42370, Stop: 42197, Start Num: 18

Candidate Starts for Caelum_65:

(5, 42556), (6, 42553), (Start: 18 @42370 has 14 MA's), (27, 42304), (29, 42274), (36, 42235), (40, 42211),

Gene: Chilliams_273 Start: 164811, Stop: 164963, Start Num: 18

Candidate Starts for Chilliams_273:

(Start: 18 @164811 has 14 MA's), (22, 164841), (24, 164859), (31, 164925), (37, 164946),

Gene: Cuke_61 Start: 38970, Stop: 39143, Start Num: 18

Candidate Starts for Cuke_61:

(8, 38847), (Start: 17 @38961 has 1 MA's), (Start: 18 @38970 has 14 MA's), (23, 39021), (26, 39033), (28, 39057), (32, 39099), (39, 39123),

Gene: Curiosium_83 Start: 50804, Stop: 50968, Start Num: 18

Candidate Starts for Curiosium_83:

(Start: 18 @50804 has 14 MA's), (30, 50906), (33, 50927), (40, 50957),

Gene: Fowlmouth_63 Start: 41807, Stop: 41971, Start Num: 18

Candidate Starts for Fowlmouth_63:

(Start: 18 @41807 has 14 MA's), (21, 41831), (28, 41894),

Gene: Jflix2_29 Start: 27850, Stop: 27686, Start Num: 18

Candidate Starts for Jflix2_29:

(Start: 18 @27850 has 14 MA's), (20, 27838), (25, 27799), (29, 27757), (37, 27712), (39, 27706),

Gene: LeoJr_257 Start: 158619, Stop: 158783, Start Num: 17

Candidate Starts for LeoJr_257:

(11, 158559), (12, 158562), (Start: 17 @158619 has 1 MA's), (Start: 18 @158628 has 14 MA's), (24, 158676), (25, 158679), (30, 158730), (31, 158742), (39, 158769),

Gene: MrMiyagi_62 Start: 42191, Stop: 42355, Start Num: 18

Candidate Starts for MrMiyagi_62:

(Start: 18 @42191 has 14 MA's), (21, 42215), (28, 42278),

Gene: Omar_66 Start: 41357, Stop: 41184, Start Num: 18

Candidate Starts for Omar_66:

(Start: 18 @41357 has 14 MA's), (21, 41333), (36, 41222), (40, 41198),

Gene: Paito_59 Start: 39620, Stop: 39778, Start Num: 18

Candidate Starts for Paito_59:

(1, 39359), (2, 39386), (3, 39395), (4, 39404), (9, 39518), (Start: 18 @39620 has 14 MA's), (19, 39626), (30, 39716), (35, 39743),

Gene: Rabbitrun_9 Start: 2782, Stop: 2624, Start Num: 18

Candidate Starts for Rabbitrun_9:

(10, 2872), (13, 2824), (Start: 18 @2782 has 14 MA's), (20, 2770), (29, 2689), (37, 2644),

Gene: Rando14_71 Start: 48397, Stop: 48549, Start Num: 18

Candidate Starts for Rando14_71:

(14, 48358), (15, 48361), (Start: 18 @48397 has 14 MA's), (19, 48403), (21, 48421), (22, 48427), (28, 48475), (34, 48511), (35, 48514), (40, 48538), (42, 48544),

Gene: ReginaGlobina_259 Start: 159833, Stop: 159988, Start Num: 18

Candidate Starts for ReginaGlobina_259:

(Start: 17 @159824 has 1 MA's), (Start: 18 @159833 has 14 MA's), (24, 159881), (25, 159884), (31, 159947), (39, 159974),

Gene: Rockabye_280 Start: 165117, Stop: 165269, Start Num: 18

Candidate Starts for Rockabye_280:

(Start: 18 @165117 has 14 MA's), (22, 165147), (24, 165165), (31, 165231), (37, 165252),

Gene: SJReid_263 Start: 154498, Stop: 154656, Start Num: 18

Candidate Starts for SJReid_263:

(16, 154483), (Start: 18 @154498 has 14 MA's), (25, 154549), (27, 154561), (31, 154612),

Gene: Superstar_69 Start: 43188, Stop: 43015, Start Num: 18

Candidate Starts for Superstar_69:

(Start: 18 @43188 has 14 MA's), (27, 43122), (29, 43092), (30, 43080), (31, 43068), (36, 43053), (40, 43029),

Gene: Tonenili_162 Start: 93057, Stop: 93221, Start Num: 18

Candidate Starts for Tonenili_162:

(Start: 18 @93057 has 14 MA's), (24, 93105), (41, 93213),

Gene: Triumph_65 Start: 43164, Stop: 42991, Start Num: 18

Candidate Starts for Triumph_65:

(Start: 18 @43164 has 14 MA's), (20, 43152), (29, 43068), (31, 43044), (36, 43029), (40, 43005),